



elighthouse.eu

elighthouse – Towards Energy Efficient Communities

Image by City of Oulu

e-Lighthouse – Energy Saving Lighthouse Cities in the NPA Region



THE PRINCIPLE AIM OF THE ELIGHTHOUSE PROJECT IS TO INCREASE ENERGY EFFICIENCY AND THE USE OF RENEWABLE ENERGY BASED SOLUTIONS IN THE NORTHERN PERIPHERY AND ARCTIC AREA.

The elighthouse partnership will encourage local and regional organizations to improve their energy efficiency. This will be achieved through best practice transfer and the sharing of existing tools and models. The elighthouse project will guide communities to further develop their environmental sustainability while also creating new ideas and procedures. The project's main goal is to increase energy efficiency and the use of renewable energy based solutions through the work of Cities, Counties, and other public authorities.

The actions of the project will focus on:

- Municipal buildings (usage, utilities, construction, retrofitting)
- Residential buildings
- Waste management (circular economy)

Communities participating in the project are part of the Covenant of Mayors and have created or are in the process of creating Sustainable Energy Action Plans (SEAP).

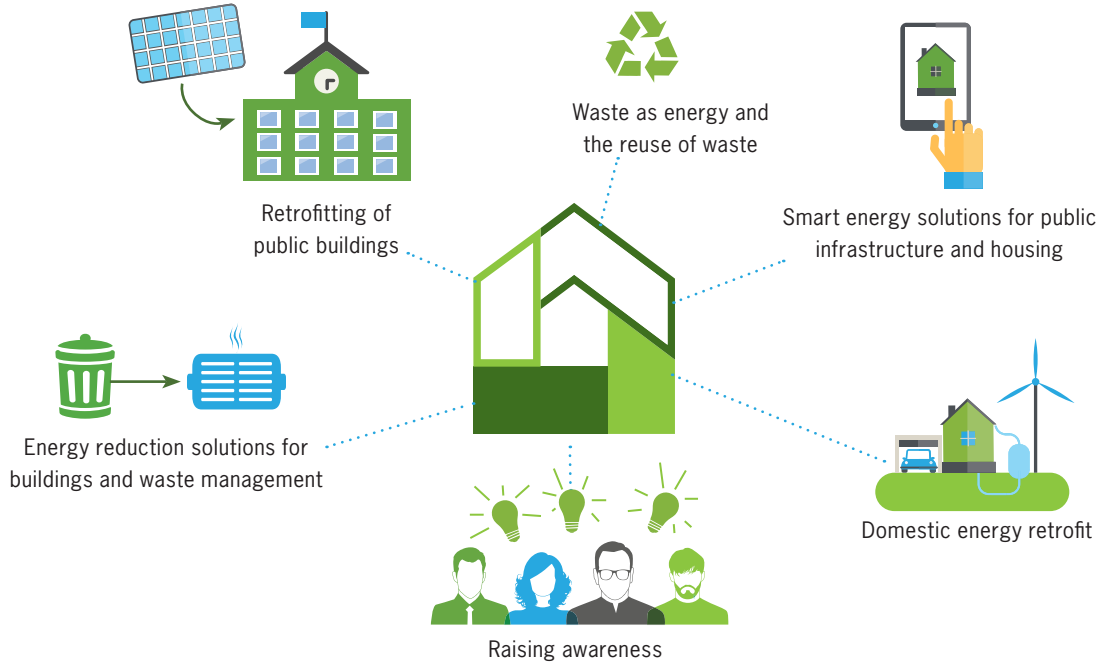
EXPECTED OUTCOME

Procedures to increase energy efficiency in municipal buildings

Monitoring procedures to track the effectiveness of actions

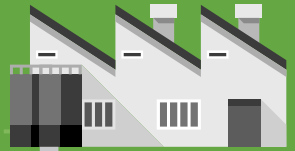
Procedures for increasing energy efficiency in the construction of new buildings and the retrofitting of the old ones

Key Components of the Project



Energy in Community

Municipal buildings



Industries

Residential buildings



Renewable Energy



People



Public lighting

Knowledge sharing

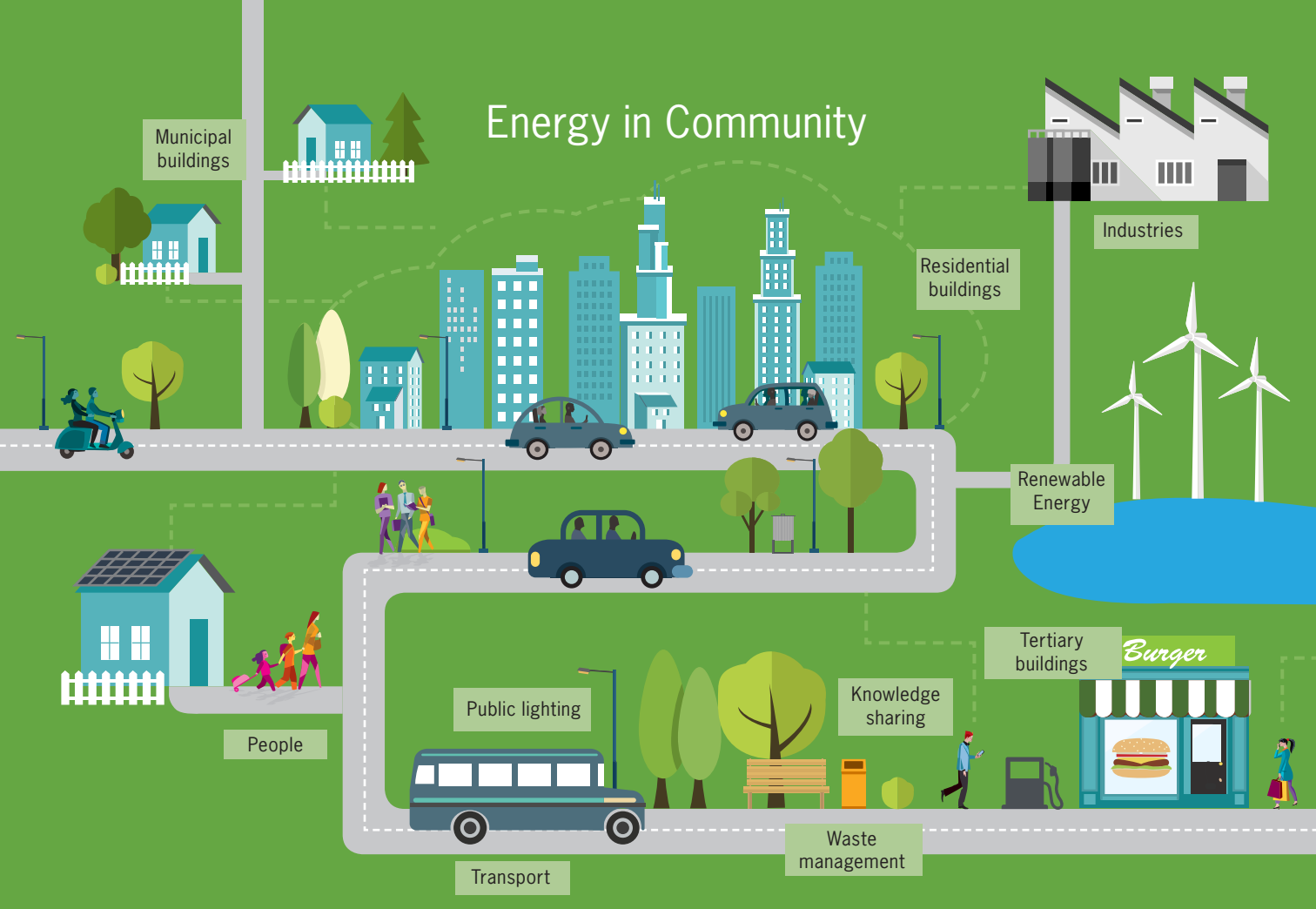
Tertiary buildings

Burger



Transport

Waste management



Contacts

LEAD PARTNER

Oulu University of Applied Sciences, FINLAND

Antti Haapalahti,
antti.haapalahti@oamk.fi
www.oamk.fi

City of Oulu, FINLAND

Helmi Riihimäki
helmi.riihimaki@ouka.fi
www.ouka.fi

Arctic Technology Center, GREENLAND

Martin Kotal
mrko@byg.dtu.dk
www.artek.byg.dtu.dk

Cork County Council, IRELAND

Brian Ahern
Brian.ahern@corkcoco.ie
www.corkcoco.ie

NCE Insulation, IRELAND

José Ospina
jose@joseospina.com
www.nceinsulation.ie

Municipality of Bodø, NORWAY

Karoline Nilssen
karoline.nilssen@bodo.kommune.no
www.bodo.kommune.no

Nordland Research Institute, NORWAY

Bjarne Lindeløv
bjarne.lindelov@nforsk.no
www.nordlandsforskning.no

The Highland Council, SCOTLAND

Eddie Boyd
elighthouse@highland.gov.uk
www.highland.gov.uk

Municipality of Umeå, SWEDEN

Erik Eklund
erik eklund@umea.se
www.umea.se/kommun

Umeå University, SWEDEN

Gireesh Nair
gireesh.nair@umu.se
www.tfe.umu.se

For further details please visit:

www.elighthouse.eu



OAMK

OULU UNIVERSITY OF
APPLIED SCIENCES

OULU

Oulu Capital
of Northern
Scandinavia 

Center for
ARKTISK TEKNOLOGI




Cork
County Council
Comhairle Contae Chorcaí



**NCE
Insulation**
IDENTIFYING & DELIVERING ENERGY REDUCTION MEASURES



bodø
KOMMUNE



NORDLANDSFORSKNING
NORDLAND RESEARCH INSTITUTE



The Highland
Council
Comhairle na
Gàidhealtachd

**UMEÅ
KOMMUN**



Northern Periphery and
Arctic Programme

2014–2020



EUROPEAN UNION

Investing in your future
European Regional Development Fund