

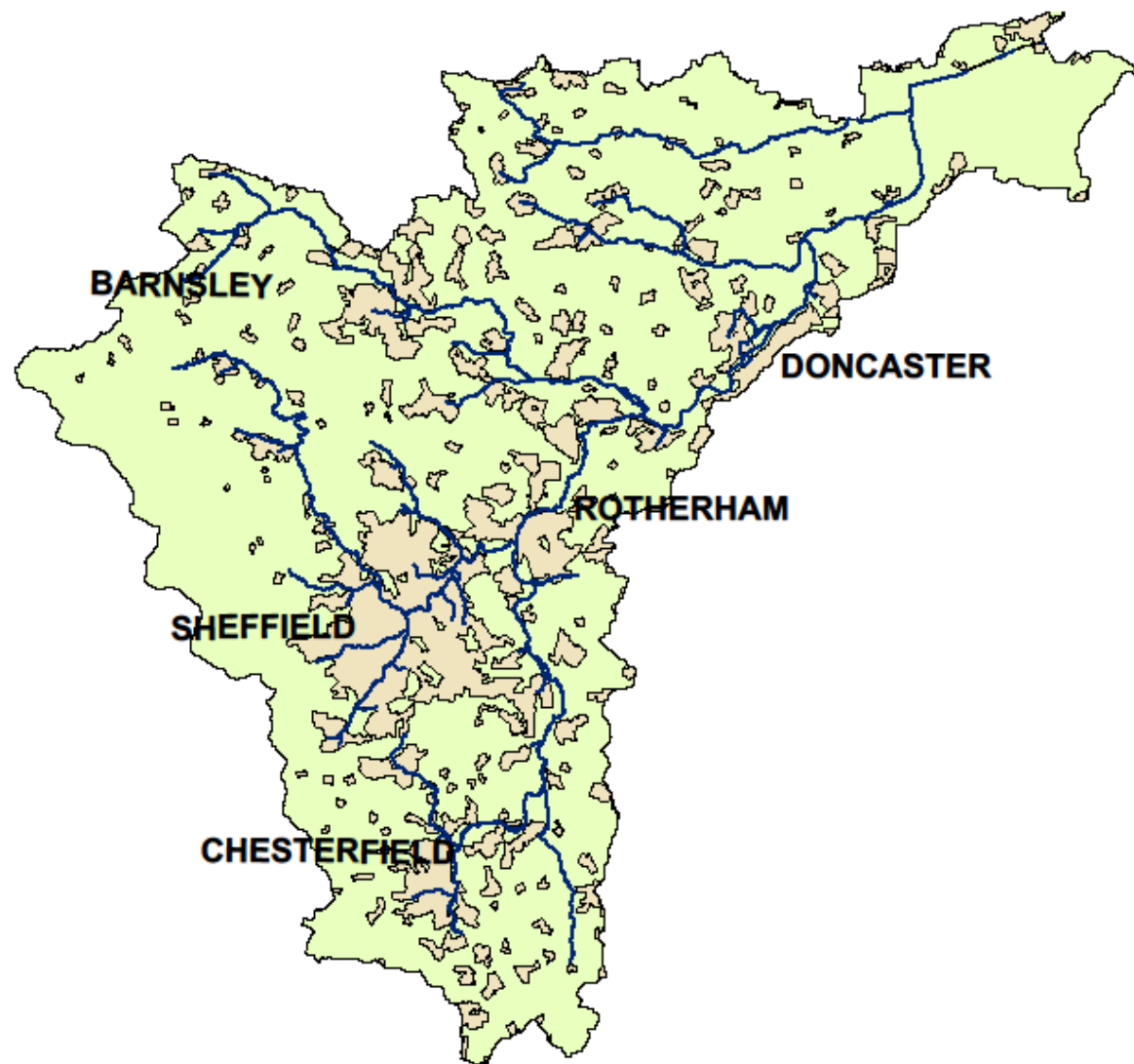


DON  
CATCHMENT  

---

RIVERS TRUST





Contains Ordnance Survey data © Crown copyright and database right 2012 & Environment Agency 2012



The living heritage of the  
**RIVER DON**



Supported by

**The National Lottery**<sup>®</sup>

through the Heritage Lottery Fund



**ABP** | KEEPING  
BRITAIN TRADING



YorkshireWater

**G GRIPPLE**

supported by  
**Environment  
Agency**



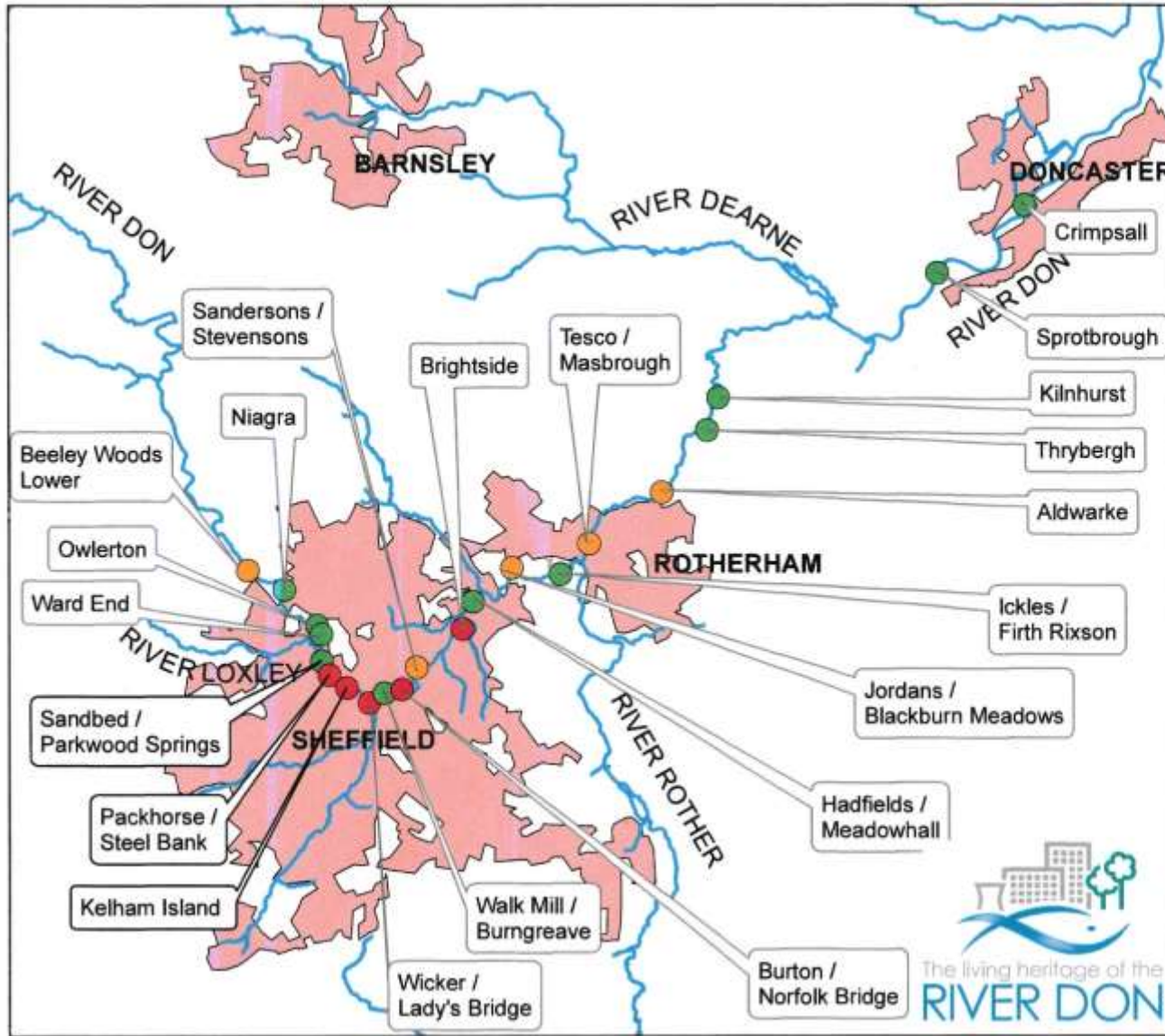
**LOTTERY FUNDED**

**greenporthull**

**Biffa Award**

Building communities. Transforming lives.

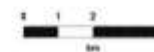
**northern**  
a serco and abellio™ joint venture



Living Heritage of the River Don

Map 2

- Passable to Salmonids
- Passage planned by others
- HLF Project Weirs



Contains Ordnance Survey data ©  
Crown copyright and database right 2016  
& Environment Agency 2016





# Our Ambition

- Our ambition is to reconnect people, communities and decision makers back to the River Don and its rich natural, cultural, built and industrial heritage.
- We want to change their beliefs and attitudes so that the River Don and its heritage will be better valued as a major asset to South Yorkshire and better protected into the future.







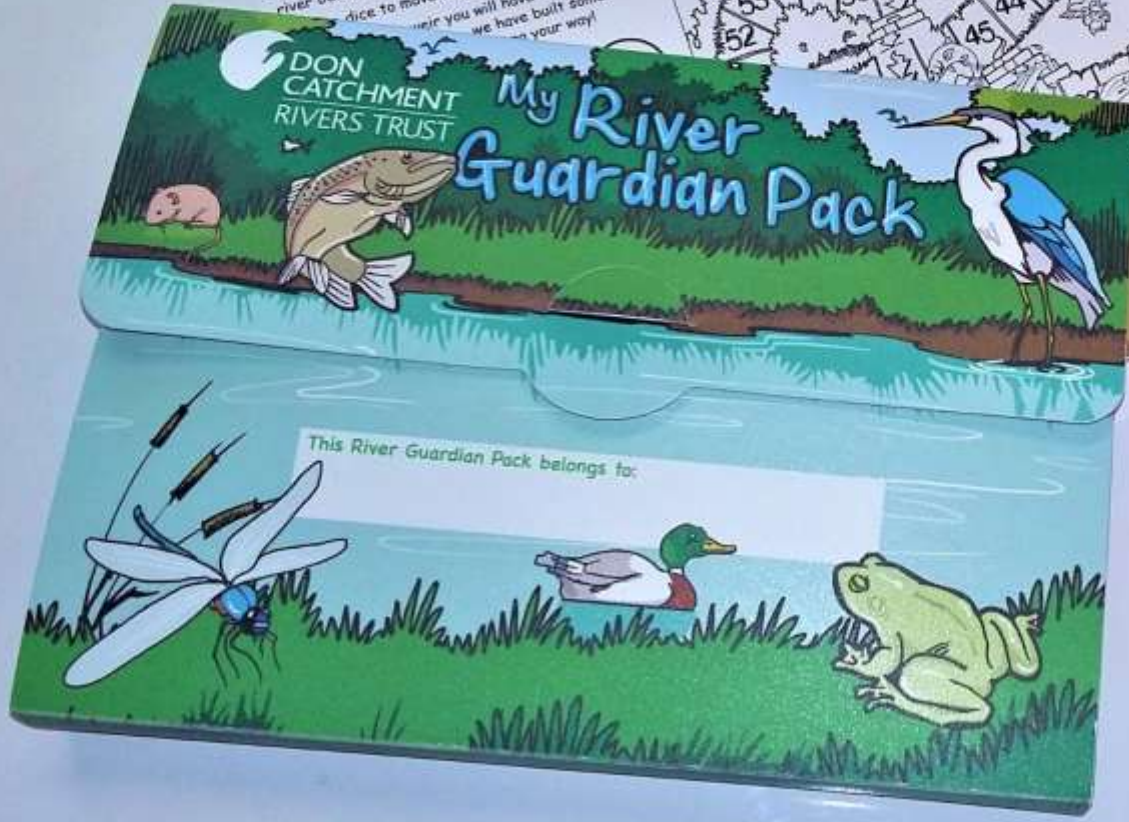
# To inspire and mobilise the community



**DON CATCHMENT RIVERS TRUST**

Our fish are having trouble swimming along the river because they cannot jump up the weirs. It is your job to help them. Roll the dice to move along the river. If you land on a number that is the same as the number on a weir, you will have to drop back to the start. We have built some bridges to help you get on your way!

Colour me in, cut me out and play our game.





# To develop skills for heritage & capacity



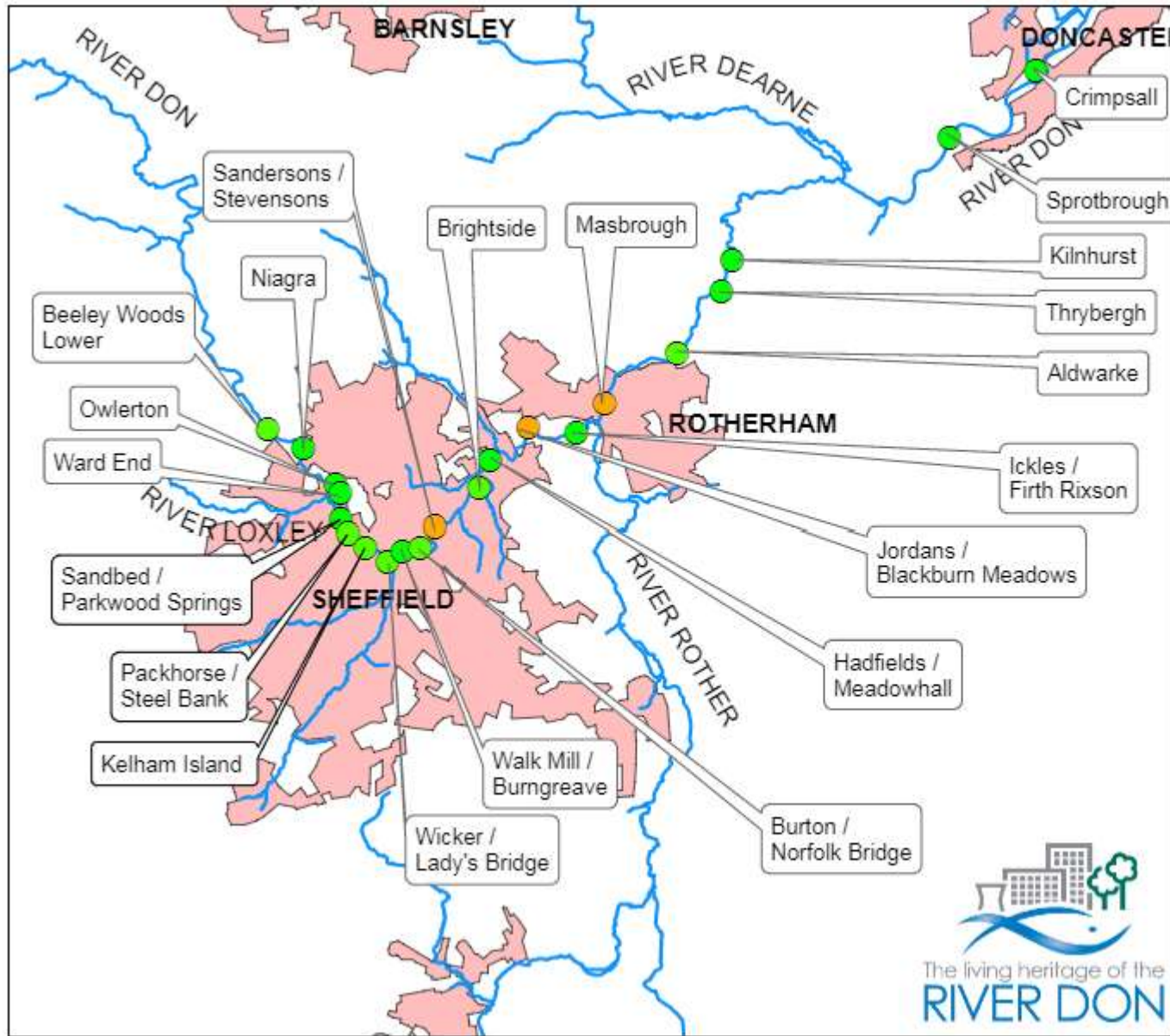
# To foster understanding of heritage & change perceptions





# Don Valley Way





Living Heritage of the River Don

Map 2

- Passable to Salmonids
- Passage planned by others



The living heritage of the RIVER DON



Contains Ordnance Survey data © Crown copyright and database right 2016 & Environment Agency 2016

# Get in touch!

Rachel Walker  
(Project Manager)

[www.dcrct.org.uk](http://www.dcrct.org.uk)  
[info@dcrct.org.uk](mailto:info@dcrct.org.uk)  
01302 796173

Facebook: Don Catchment Rivers Trust  
Twitter: @DonCatchmentRT

