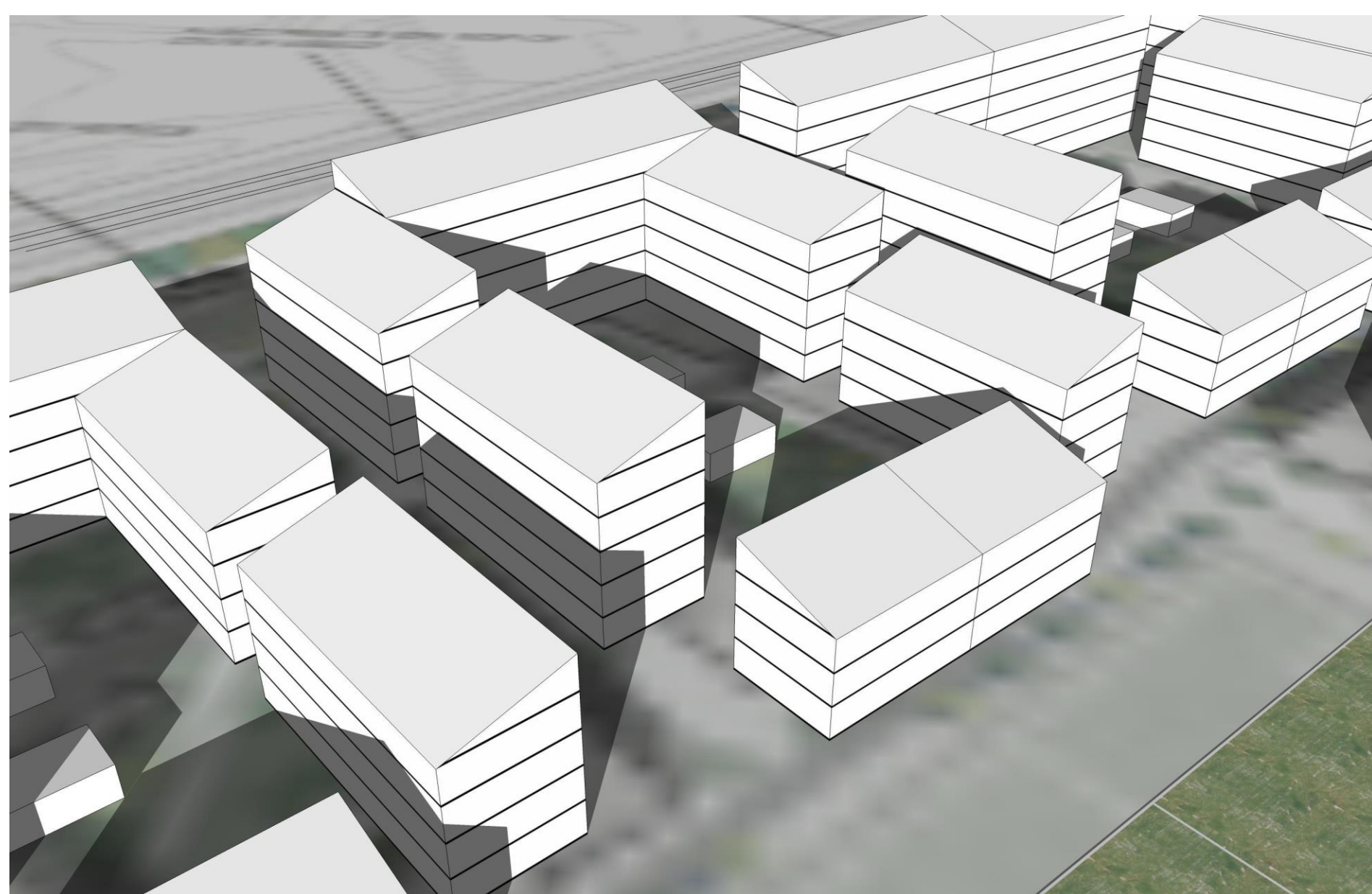


Urban planning for solar energy in Lund

The city of Lund with 115 000 inhabitants is planning for the development of a new urban district, Sydvästra Lund (Southwest Lund), which also includes a new train station. The train station is planned to be ready 2023. Ensuring a high share of renewable energy supply is an important aspect in planning for this new district. The city of Lund is especially considering possibilities for solar energy installations. This pilot project within the BEA-APP project will look into how Skåne Energy Agency, Skåne Association of Local Authorities can support City of Lund in giving the best prerequisites in the planning process for solar energy installations.



3D model of new urban area optimised for solar energy installations on roof tops

Stakeholder involvement

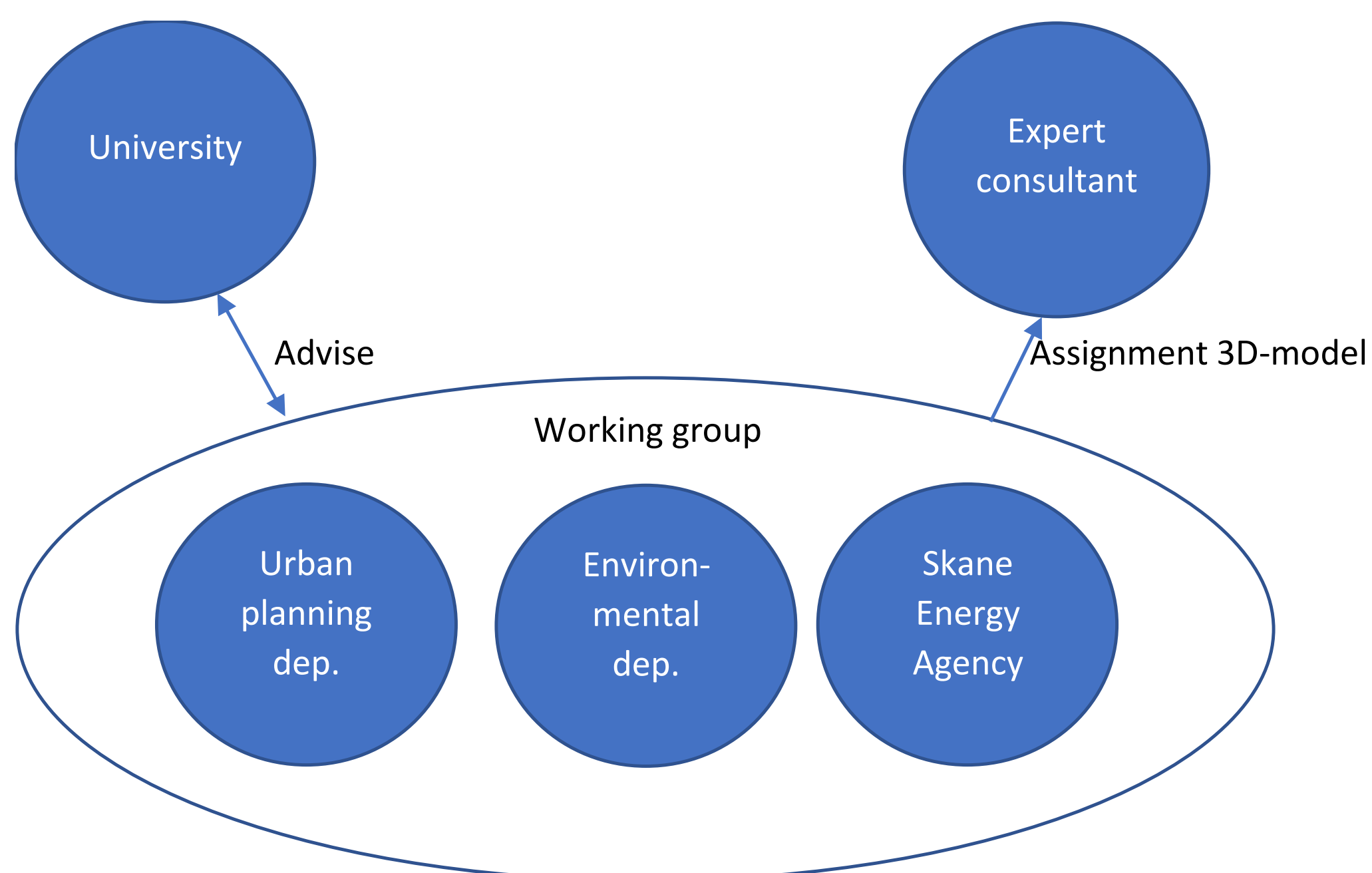
Skåne Energy Agency had an initial meeting with Environment Strategy Department, University of Lund and Kraftringen to define the process. A series of meeting followed with the planning group which included City Architect for Sydvästra Lund, Officer at planning department, Environmental Strategy Officer defining what the expert planning consultant should do. An expert consultant was contracted and joined the meeting with the planning group. The expert consultant developed a 3D model for how the area could look like when optimised for solar energy installations.



Stakeholder meeting for urban planning in City of Lund

Co-operation links with stakeholders

City Architect for Sydvästra Lund, City of Lund
 Officer at planning department, City of Lund
 Environmental Strategy Officer, City of Lund
 Senior lecturer, dep. Energy and Building Design, University of Lund
 Business developer, Kraftringen (local energy company)
 Expert planning consultant



The pilot study has been working with preparing for solar energy installations in a new urban area early in the planning process. There has not been much conflicts about solar energy installations at this stage or between stakeholders in the planning group. The conflicts are likely to occur at a later stage of the process when the solar energy installations actually will be installed. Conflicts can occur from an architectural point of view or a technical point of view or a customer oriented point of view.

What we have learnt is that staff at the planning department of a city is very busy. It would have been fruitful to have them involved even to a larger extent.

Contacts

Per-Johan Wik
 Skåne Association of Local Authorities /Skåne Energy Agency
 Tel. +46 728 - 85 49 31
 E-mail: per-johan.wik@kfsk.se
kfsk.se/energikontoretstane