

Memo

To
MorphAn users

Date
2017-10-17

Reference
1.0.0

Number of pages
6

From
Marien Boers

Direct line
+31 (0)88 335 8473

E-mail
MorphAn@deltares.nl

Subject
MorphAn 1.5 installation manual

Copy to

1 Introduction

This memo describes the setup procedure for MorphAn 1.5. MorphAn setup always requires the installation file “MorphAn (1.5.*) .msi”. There are also minimum requirements for the operating system (see section 2 for details). After MorphAn is installed (section 3), you can start the program from the Windows Start menu “MorphAn (1.5.*)”, or double-click the MorphAn icon (figure 1) on the Windows desktop.



Figure 1: MorphAn icon

2 System Requirements

For MorphAn to run without problems, it is preferable (or in some cases essential) to install the program on a computer that meets the following minimum requirements:

- Microsoft Windows 7 or higher
- Microsoft .NET Framework version 4.0 or later
- Intel Pentium III / 800 MHz processor (or equivalent)
- 4 GB of RAM (8 GB of RAM recommended)
- Display resolution of 1024x768 pixels or better

3 MorphAn installation and start-up

To start the setup program, double click the MorphAn installation file “MorphAn (1.5.*) .msi”. In many cases, a security warning will appear; this is normal. When this happens, click e.g. *Yes* or *Install* (Figure 2) to confirm that you wish to continue the setup.

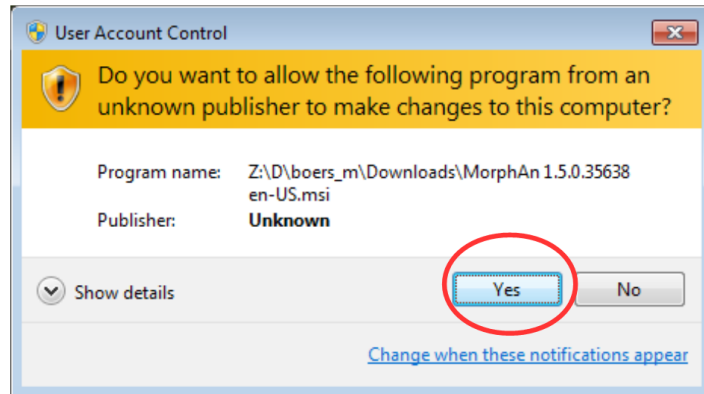


Figure 2: Typical security warnings

The setup wizard then appears (Figure 3).

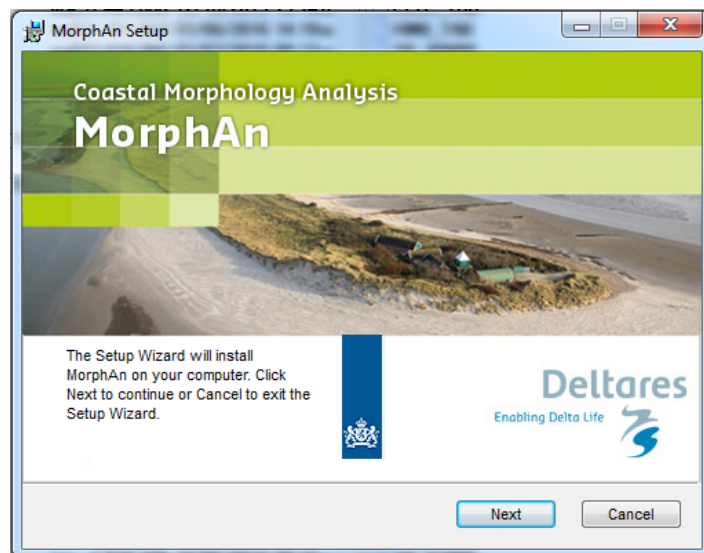


Figure 3: Setup program Welcome screen

Click *Next* to continue.

In the next screen (Figure 4) check the box beside “I accept the terms in the License Agreement” to accept the conditions of use for the software.

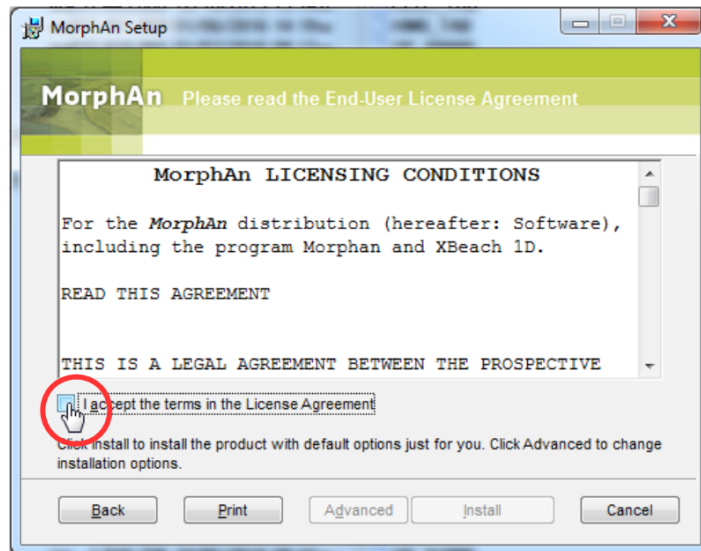


Figure 4: MorphAn End User License Agreement screen

The buttons *Advanced* and *Install* will then be activated.

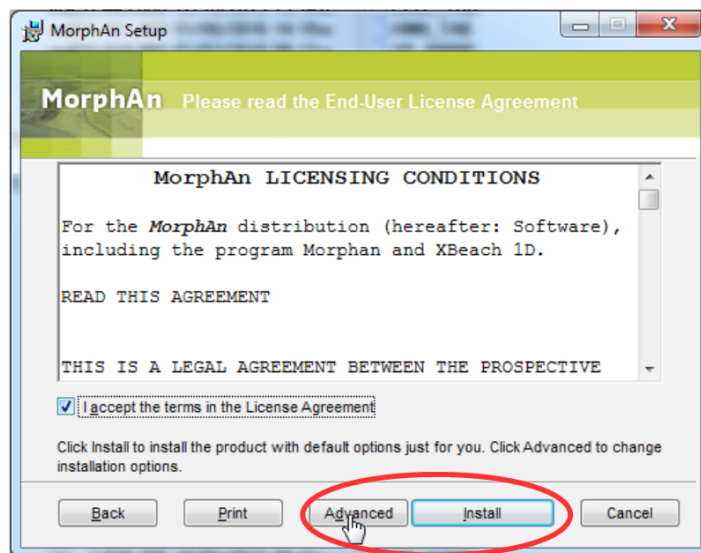


Figure 5: License Agreement screen with standard or advanced installation buttons activated

Click *Install* to continue with the standard setup; or click *Advanced* if you wish to change the installation folder or select additional components for your setup. Available plug-ins are “XBeach 1D”, “Scripting” or “Bank Analysis”.

After clicking *Advanced*, a screen similar to Figure 6 will appear. This screen allows you to choose the installation scope (range of users who may access the software).

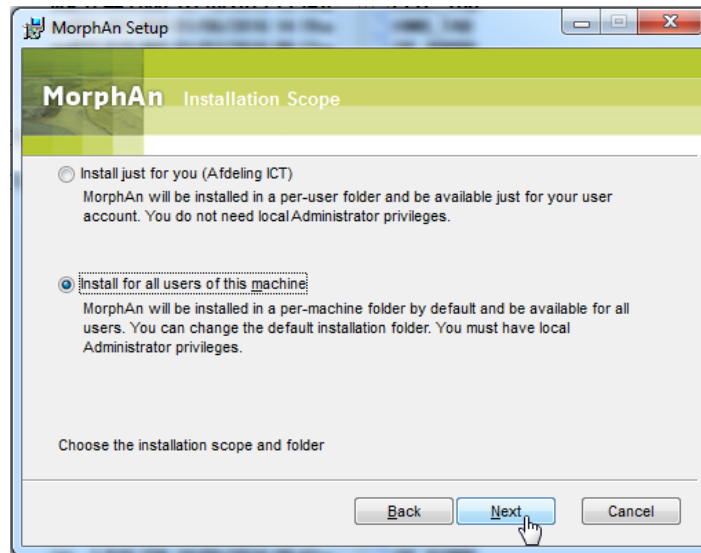


Figure 6: Installation Scope selection screen

When you click *Next*, a window appears in which you can accept or change the destination folder for the software (Figure 7).

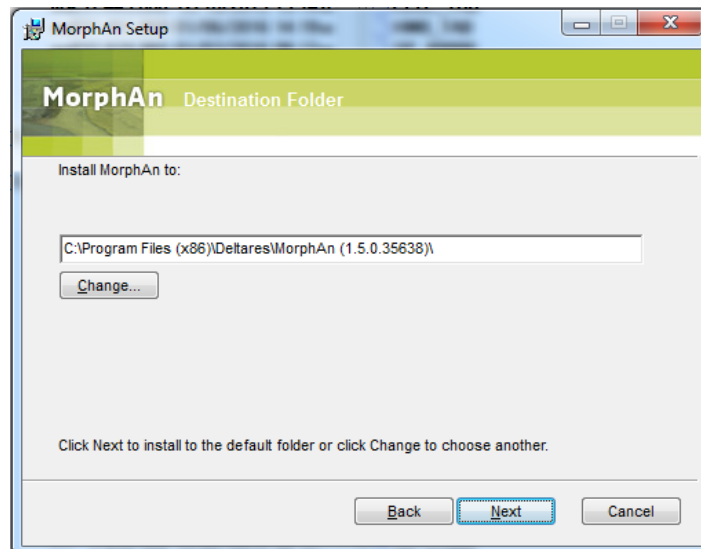


Figure 7: Destination Folder selection screen

Click *Next* to continue.

At this point you can select the product features (optional components) to be installed. Available plug-ins are “XBeach 1D”, “Scripting” and “Bank Analysis”.

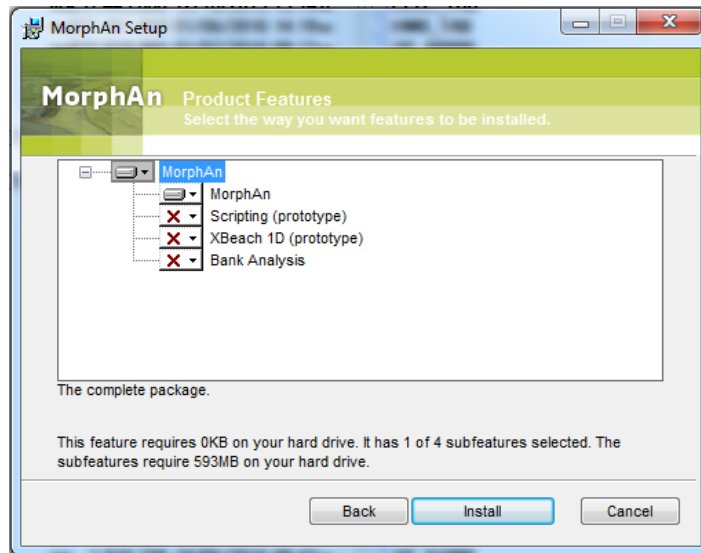


Figure 8: Product Features selection screen

Click *Install* to finalize the MorphAn setup. The screen shown in Figure 9 will appear when the setup is complete. Click *Finish* to exit the setup program.

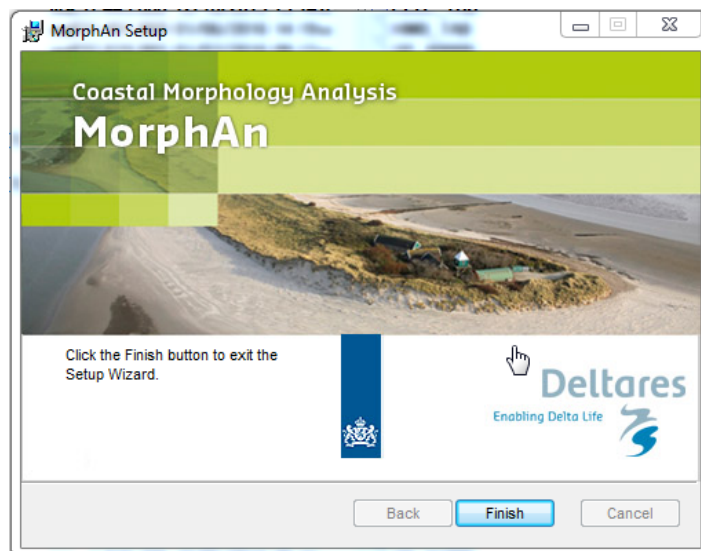


Figure 9: Setup completion screen

A MorphAn shortcut is automatically added to your Windows desktop; another link is added to the Start menu under *Programs* → *Deltares*. To start MorphAn, simply double-click the desktop shortcut (see Figure 1), or click the link in your Start menu.

The translation of this manual from Dutch to English was commissioned by Rijkswaterstaat Water, Traffic and the Environment (WVL), as part of the Interreg VB NSR project “Building with Nature”.

