



Cycle Highway Academy

Monitoring

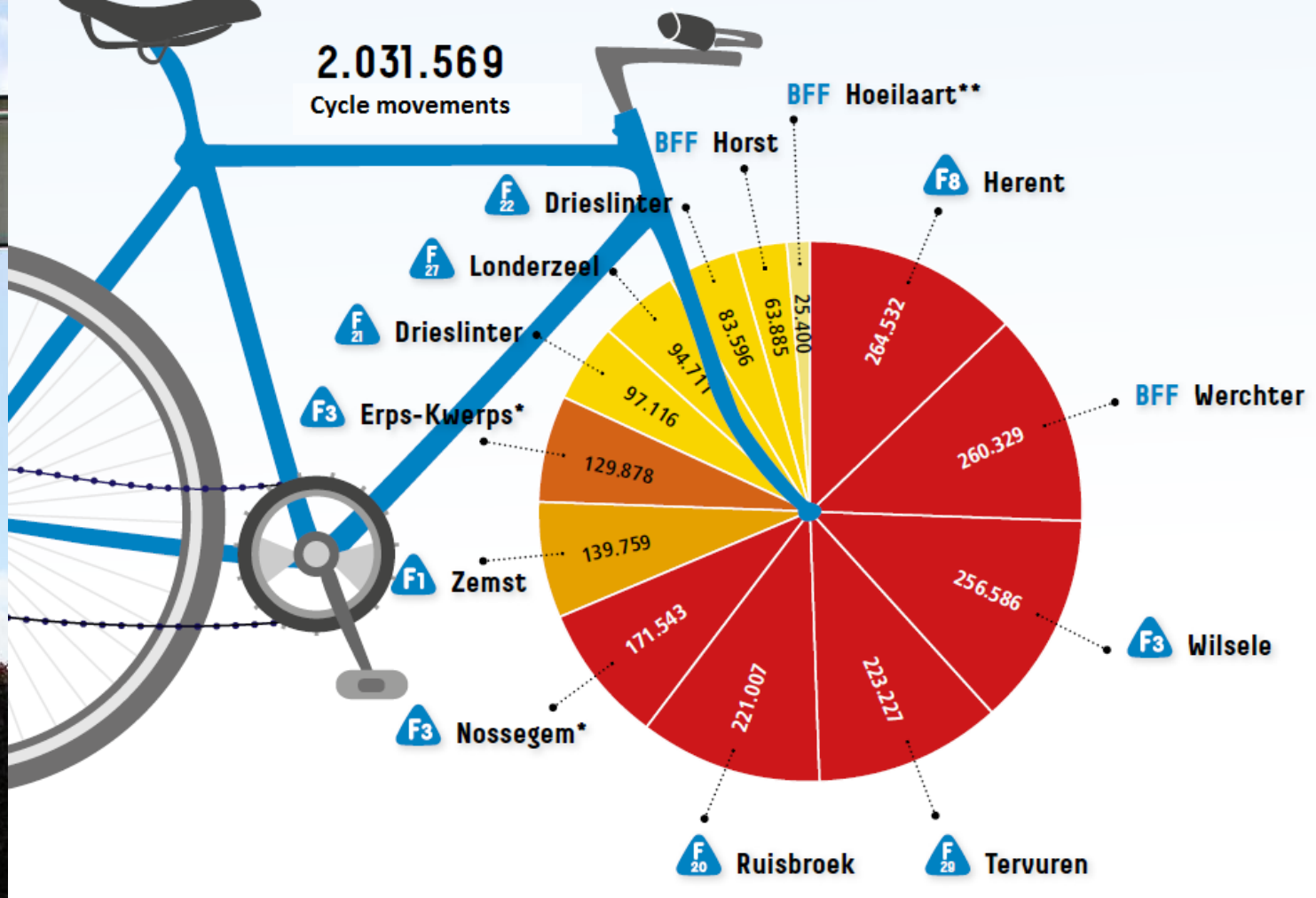


**VLAAMS-
BRABANT**

kruispunt van vele werelden



Continuous counting



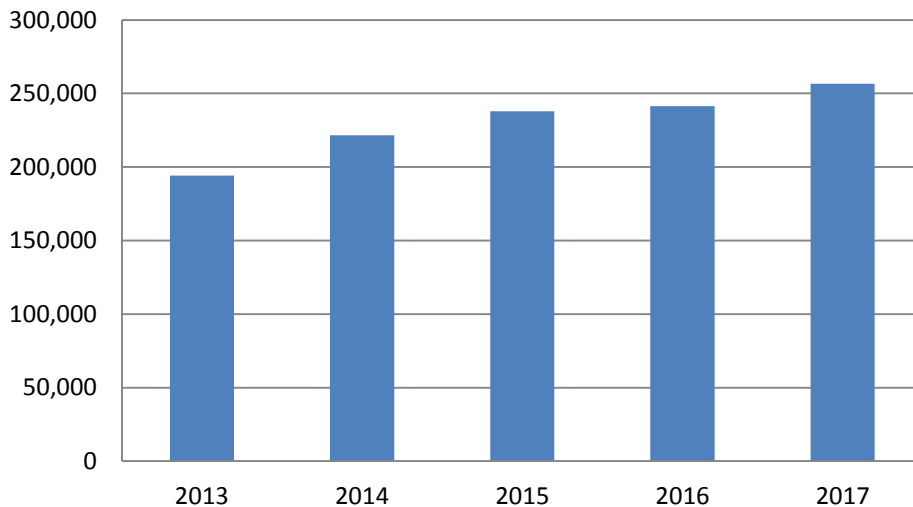
Average number of
cyclists per day - 2017

- 600 - 750
- 450 - 600
- 300 - 450
- 150 - 300
- < 150

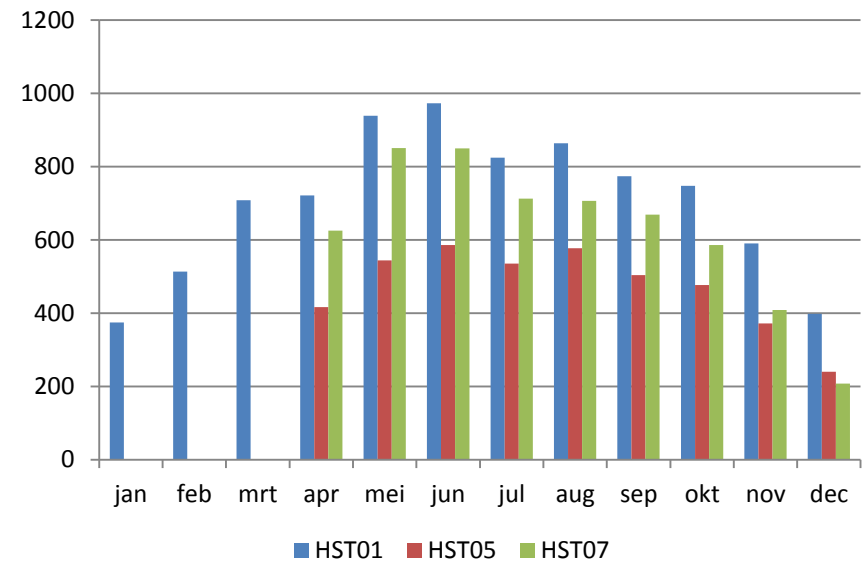
**VLAAMS-
BRABANT**

* F3 usage 2013 - 2017

Bicycle counts (T1) + 32%



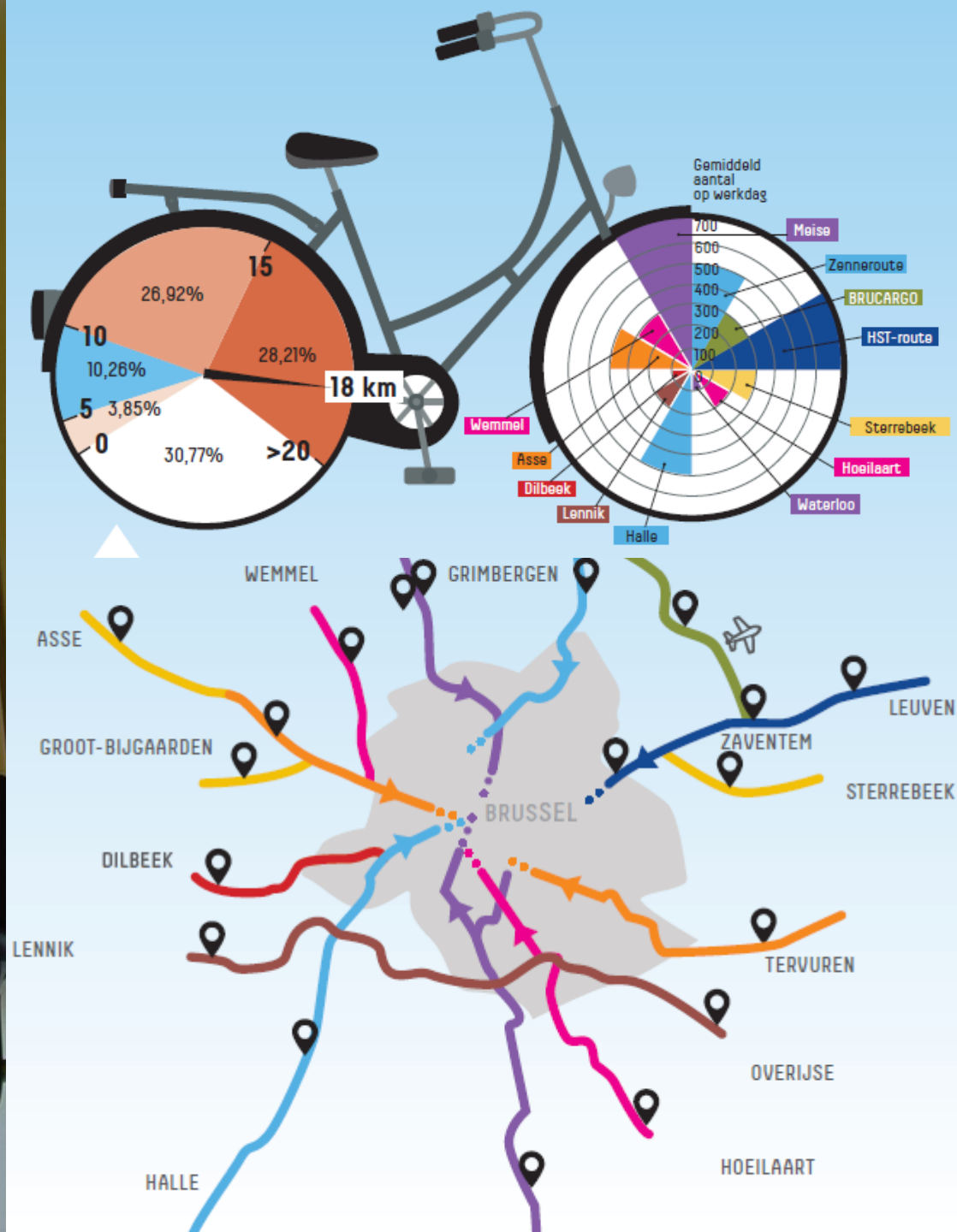
Daily average (2017)



**VLAAMS-
BRABANT**



Recurring counting



* Surveys

- **Characteristics cyclists**

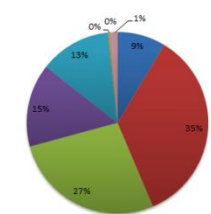
- **Distances traveled**



Cycle highway user profile

Gender > 75% male
Age 25 – 54 yrs

Bicycle type



■ F3 bike ■ F10u bike ■ Borne ■ Trek bike

Distance

Average

F3 18,71 km (Std 10,75)

F20 19,93 km (Std 11,75)



Foto: Nico Lauryssen



GPS logging

* GPS tracks – 50 e-bikes

 cycleprint

 leuven

 Dutch

 dataset / instellingen

Tools

Intensiteit

Intensiteit

Kortste Routes

Aantrekkelijkheid

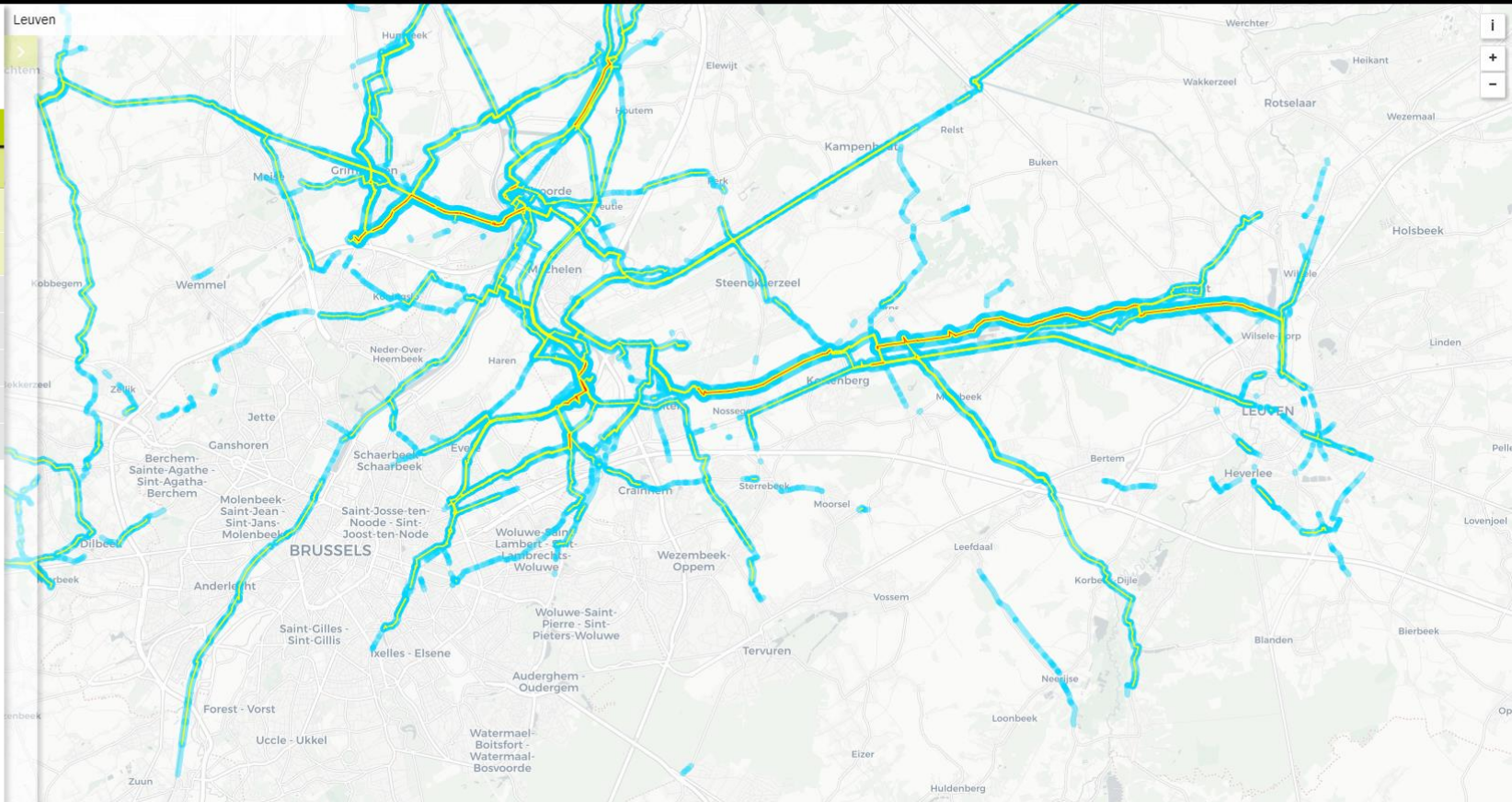
Snelheid

Routes

Gebieden en Relaties

Bereikbaarheid

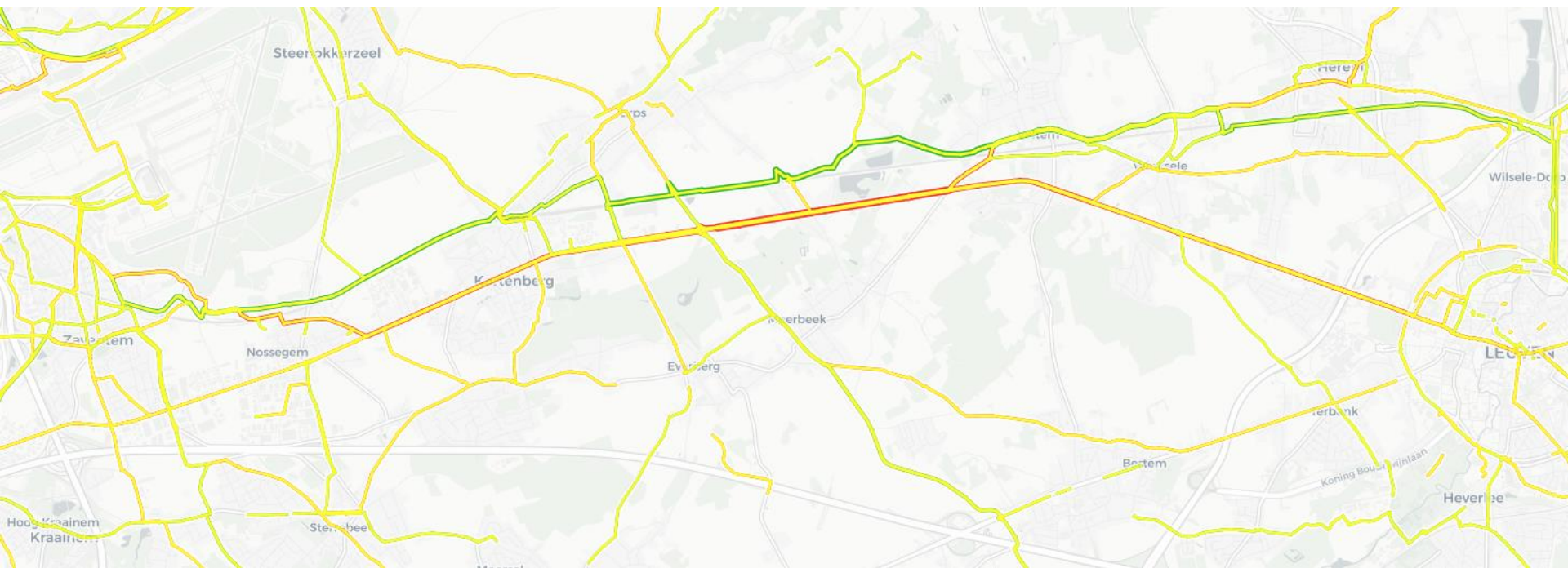
Export



4.759 trips
32.798 km

VLAAMS-
BRABANT

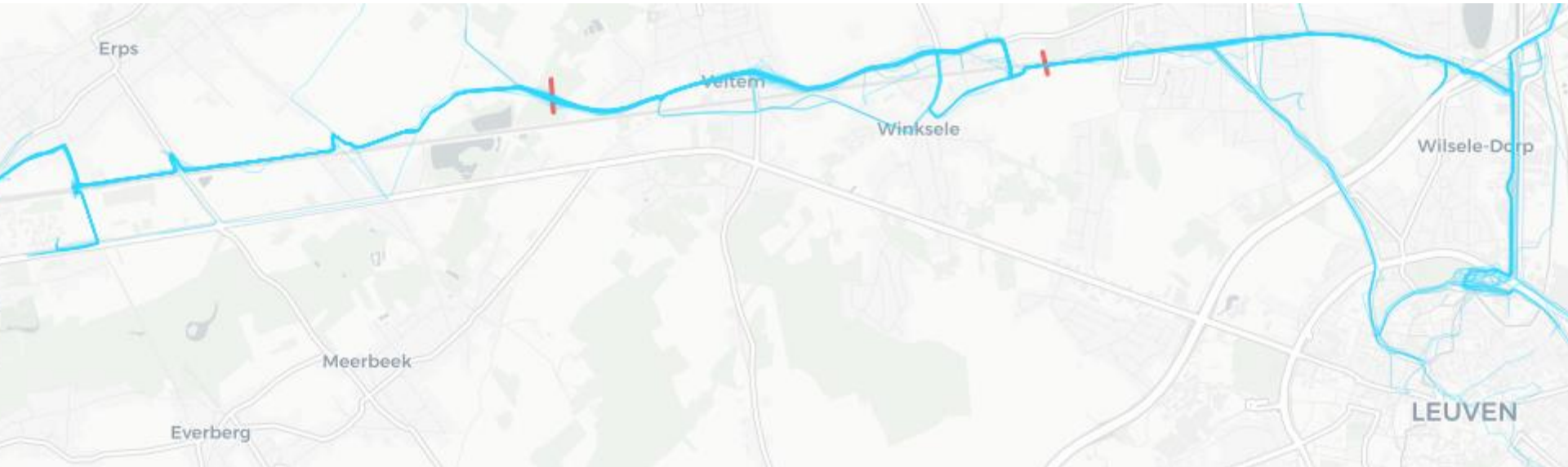
Attractivity



* Attractivity of the cycle highway by workplace



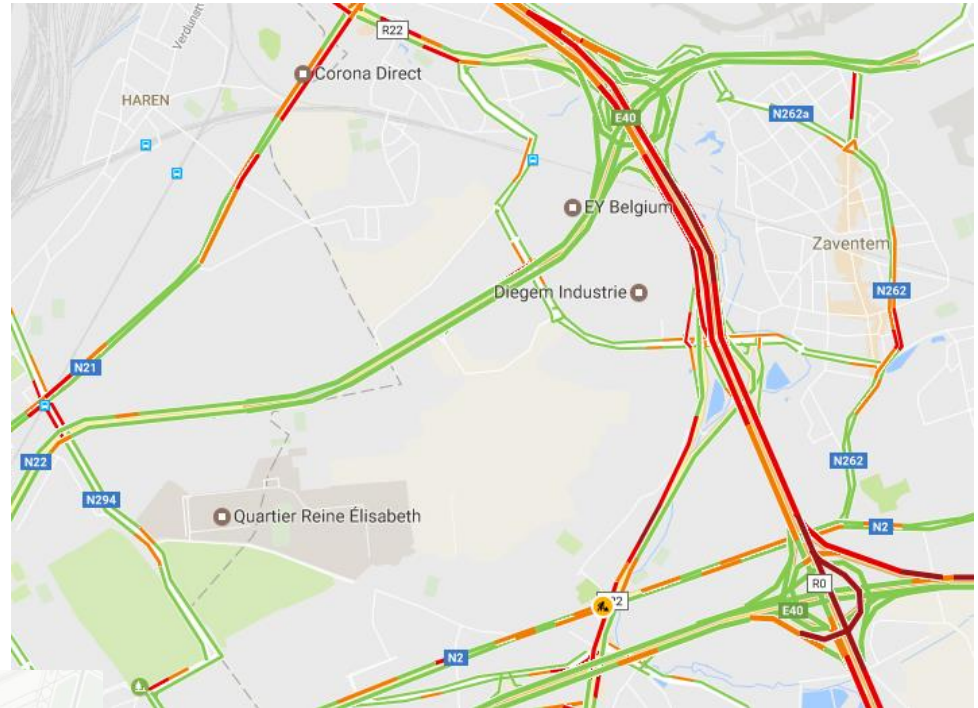
* Identify wayfinding problems





Changing the mental map Bike vs Car

‘De Fietstest’ absolute speed



Google maps traffic

