



EUROPEAN
REGIONAL
DEVELOPMENT
FUND

EUROPEAN UNION

BFCC

Baltic Fracture Competence Centre



BFCC

Baltic Fracture Competence Centre

Imke Schneemann, Life Science Nord
Bone Innovation Summit

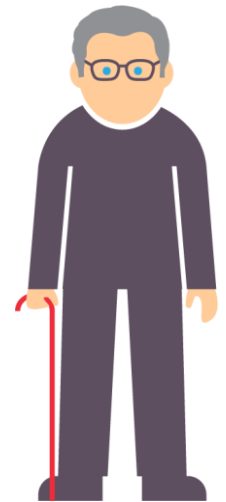
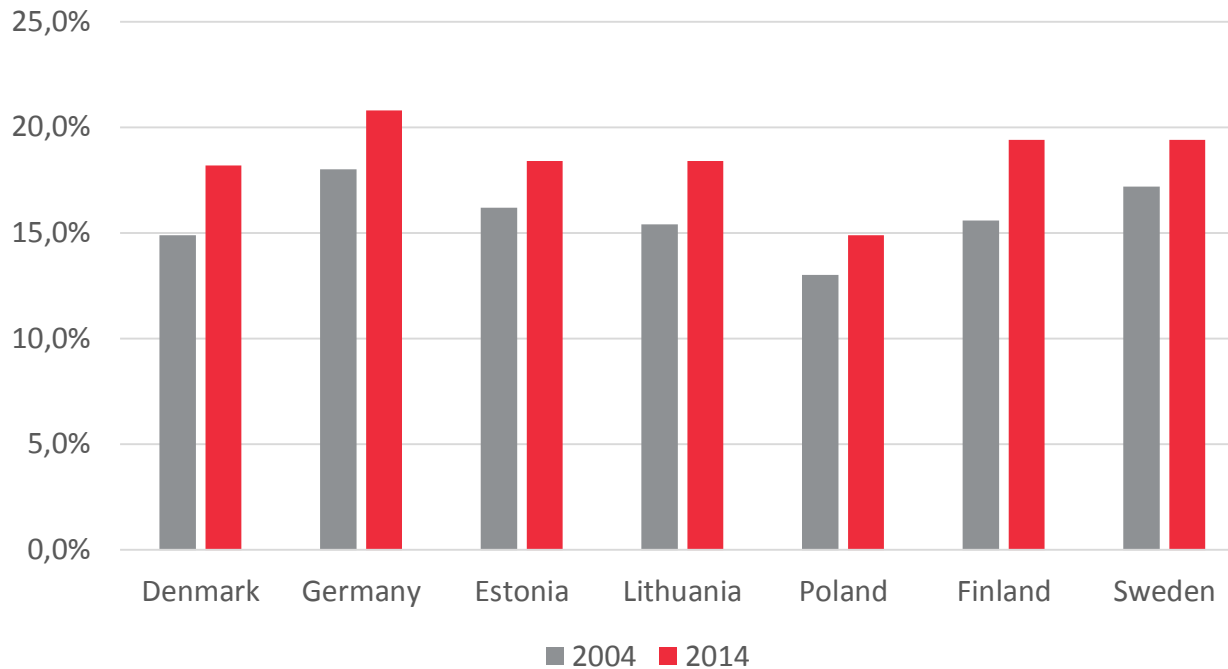
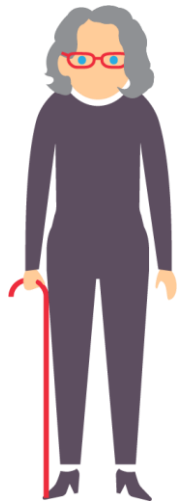
13/02/2019



#BONIS2019

Fractures will increase

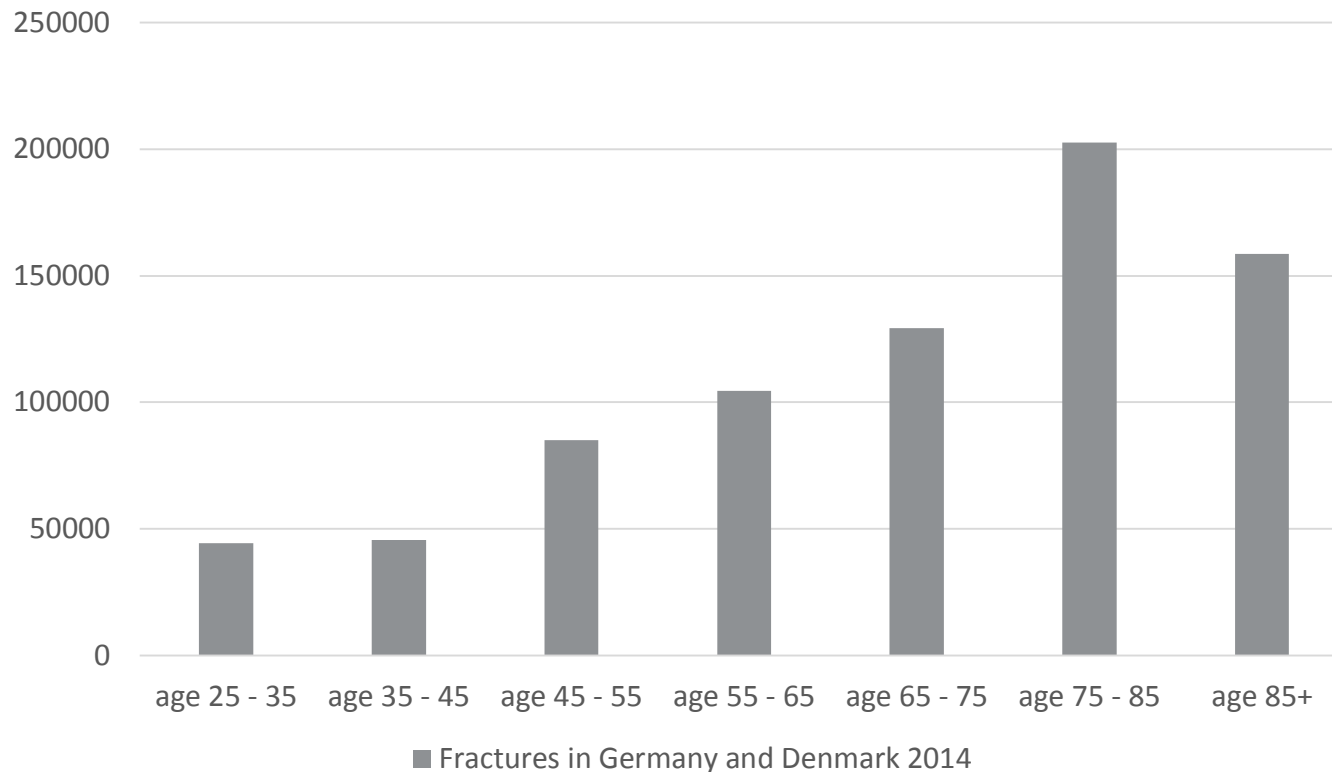
Percentage of total population of 65 years and older in the BSR



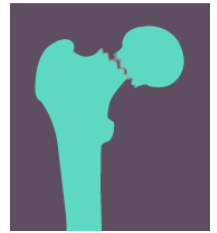
Source: [http://ec.europa.eu/eurostat/statistics-explained/index.php/File:Population_age_structure_by_major_age_groups,_2004_and_2014_\(%25_of_the_total_population\)_YB15.png](http://ec.europa.eu/eurostat/statistics-explained/index.php/File:Population_age_structure_by_major_age_groups,_2004_and_2014_(%25_of_the_total_population)_YB15.png)

Fractures will increase

Fractures in Germany and Denmark 2014



Sources: Krankenhausstatistik Diagnosedaten der Patienten und Patientinnen in Krankenhäusern, Statistisches Bundesamt and <http://www.statbank.dk/INDP01>





Source: private

Fostering innovation for better fracture management

Project partners

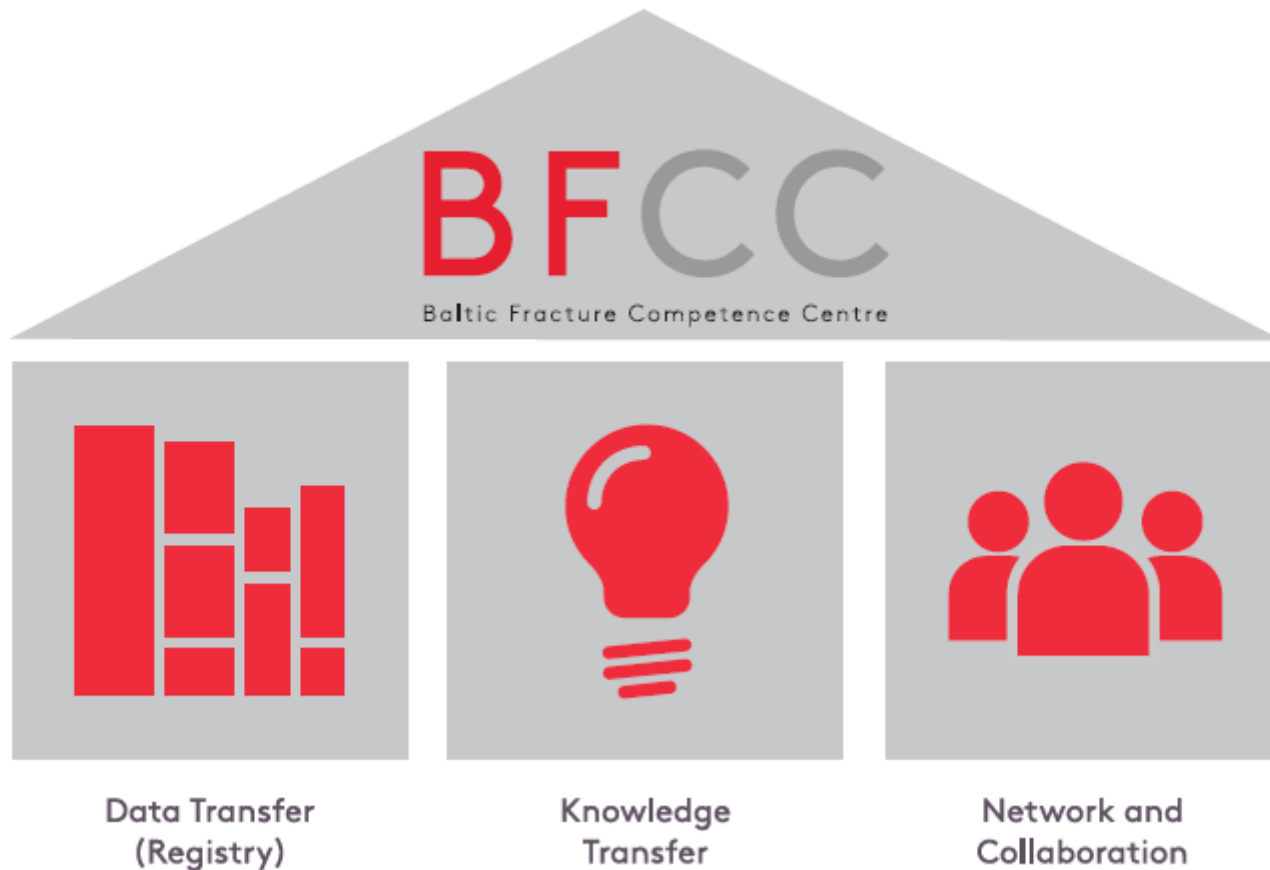
- Hospital // Existing fracture registry**
Sahlgrenska University Hospital, SE
- Hospital // Novel fracture registry**
Lithuania University of Health Science, LT
University Hospital Krakow, PL
University Medical Center Schleswig-Holstein, DE
University of Tartu, EE
- Industry**
Bone Index Finland Ltd., FI
BONESUPPORT AB, SE
Stryker Trauma GmbH, DE
- Research institution**
University Medicine Greifswald, DE
- Cluster**
LifeScience Klaster Krakow, PL
Life Science Nord Management GmbH, DE
ScanBalt, DK
Tartu Biotechnology Park, EE



Project in a nutshell

- 13 organisations from seven countries around the Baltic Sea
- Duration: 36 months (03/2016 – 02/2019)
- Total budget: EUR 3.6 million (EUR 2.8 million ERDF)
- Interreg Baltic Sea Region Programme 2014-2020
- Flagship project of the EU strategy of the BSR
- Lead Partner: Life Science Nord Management GmbH

Baltic Fracture Competence Centre

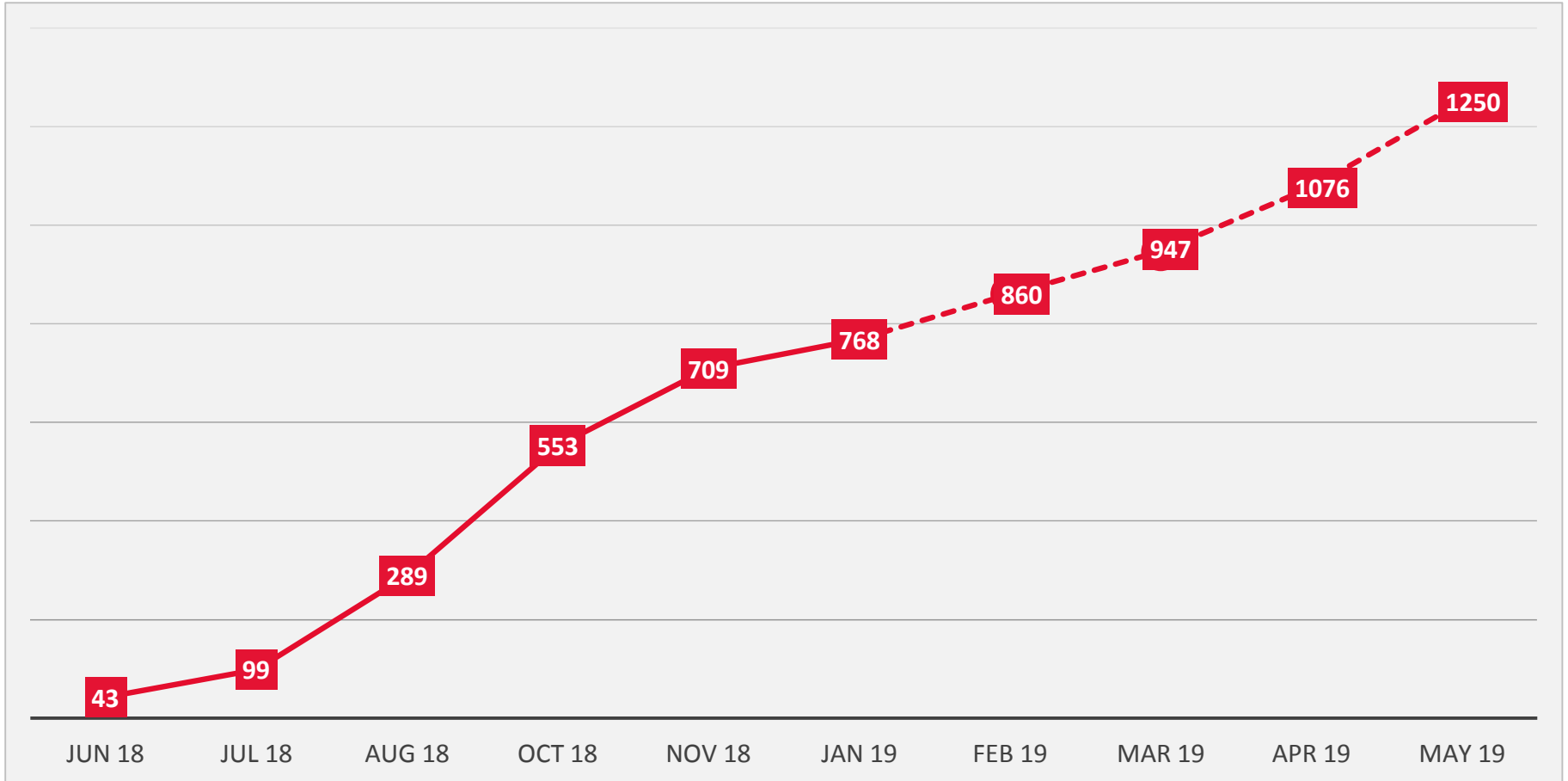


Transnational fracture registry

- **Hospital / Existing fracture registry**
Sahlgrenska University Hospital, SE
- **Hospital / Novel fracture registry**
Lithuania University of Health Science, LT
University Medical Center Schleswig-Holstein, DE
University Hospital Krakow, PL
University of Tartu, EE
- **Research institution / IT infrastructure**
University Medicine Greifswald, DE



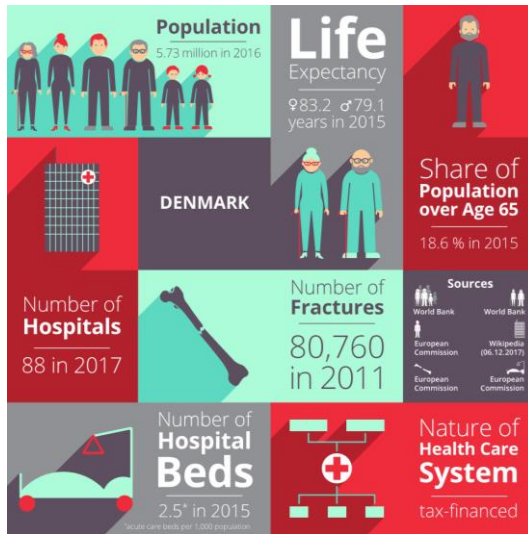
Amount of common minimal data set entries



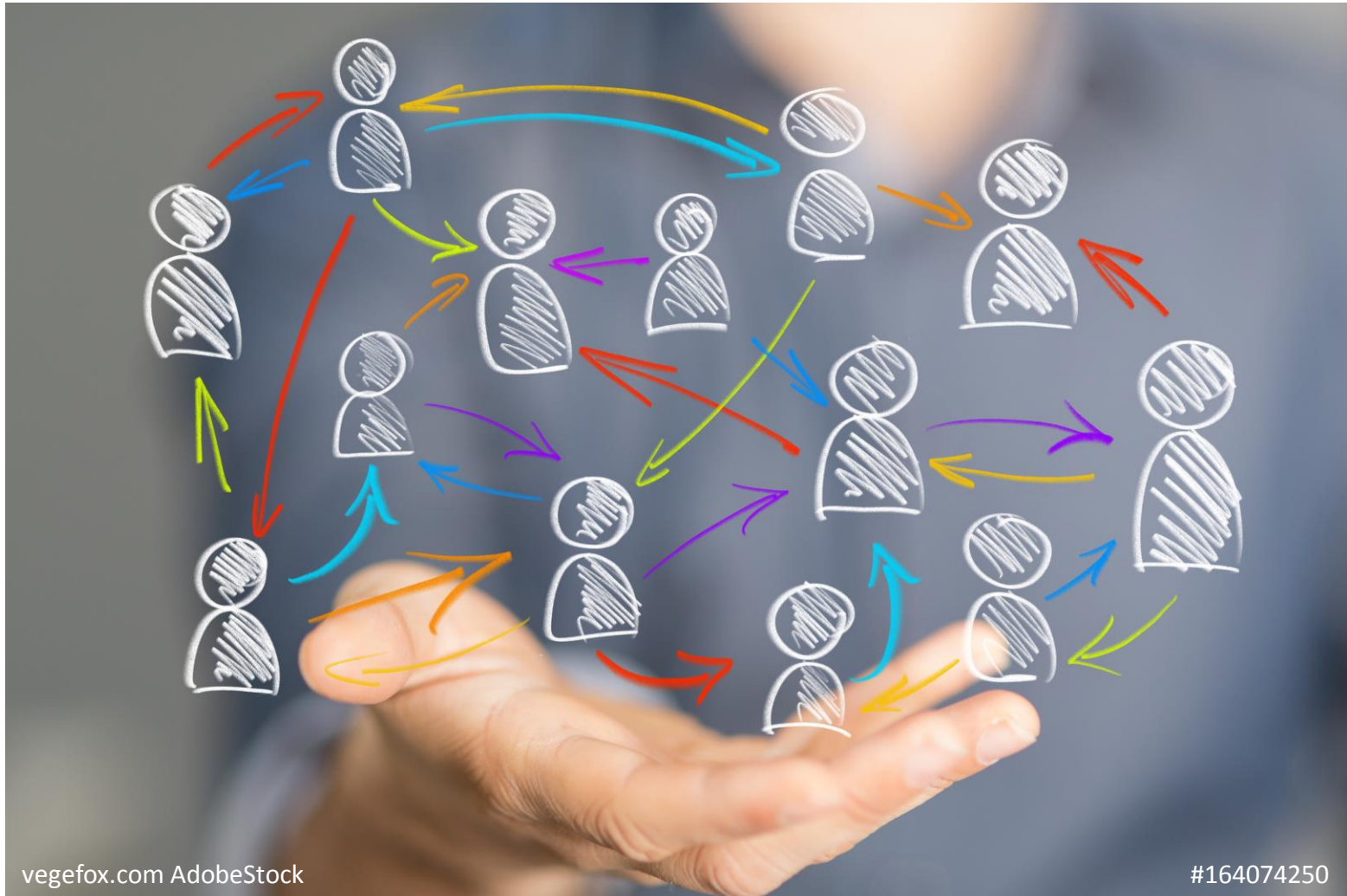
Knowledge Platform



Knowledge Platform



Stakeholder Dialog



vegefox.com AdobeStock

#164074250

Knowledge Exchange

Webinars

Knee Fractures in the Elderly Patient



BFCC Webinar

Primary Total Knee Arthroplasty for Fracture Treatment in the Elderly Patient

Department of Orthopaedics and Trauma
Universitätsklinikum Schleswig-Holstein, Campus Lübeck

"Fast Track" Protocol for Femoral Fractures



BFCC Webinar

"Fast Track" Protocol For Femoral Fractures
- where are we heading?

Lithuanian University of Health Sciences,
Prof. Senutis Tarasevicius

Scapular Fractures



BFCC Webinar

Scapula Fractures

Sahlgrenska University Hospital, Göteborg, Sweden
Carl Ekholm MD, PhD, assoc. prof.

Orthogeriatrics - Fragility Fractures



BFCC Webinar

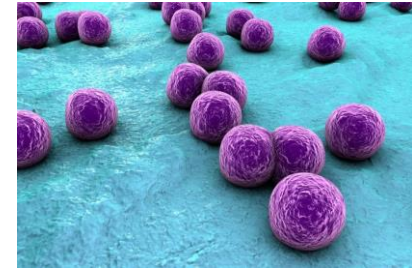
Orthogeriatrics – Management of Elderly Patients with Fragility Fracture

University of Tartu, Estonia
Indri Koka, MD, PhD
Geriatrician

Demonstration Pilots

1. Infections

to develop an implant-related infection control solution concept



2. Diagnostics

to evaluate the clinical use of the Bindex[®] device in patients with an acute hip fracture



3. Complications

to develop a novel classification system specifically for complications of orthopaedic fracture treatment based on current existing systems



© Kateryna Kon, eranicle, Puwadol Jaturawutthichai - all shutterstock

MDR sub-study

to provide information on how to ensure constant monitoring of complications and irregularities

Innovation Library



BFCC_{HUB}



Development of a **framework for the use of the registry** and improvement of the economic usability of the data



Development of a **web platform for collaboration** to: foster innovation and improvement of collaboration between health science and industry



Intensify the **collaboration network activities** (e.g. network meetings, symposiums, advisory board meetings)

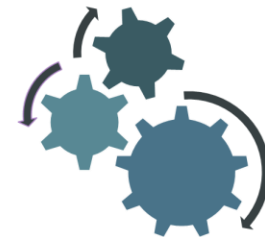


Facilitate **data transfer from data entry to data output via an automated data transfer** between industry and hospitals and thus further optimize the IT-infrastructure for data exchange



Improved usability with **new services and an increased commercial use** with better **data analysis**.

Inn4Health



adam121 AdobeStock

#174619573



 **Interreg**
Baltic Sea Region



EUROPEAN UNION
EUROPEAN
REGIONAL
DEVELOPMENT
FUND

BFCC
Baltic Fracture Competence Centre

www.bfcc-project.eu



Contact

Dr Imke Schneemann
Life Science Nord Management GmbH
Legienstraße 40
24103 Kiel, Germany
+49 (431) 90 98 68 58
schneemann@lifesciencenord.de
www.lifesciencenord.de



EUROPEAN UNION

EUROPEAN
REGIONAL
DEVELOPMENT
FUND



Project Management
Ralf Duckert,
DSN - Connecting Knowledge

www.bfcc-project.eu