

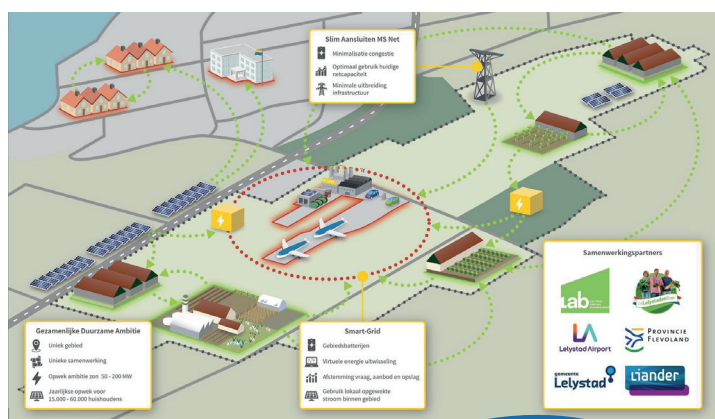
Sustainable Mobility and Energy Plan, Flevoland, the Netherlands



**PROVINCIE
FLEVOLAND**

In brief:

- Policy learnings and good practices from the urban development of the Stockholm Royal Seaport are being applied to the sustainable area development of Lelystad Airport, Lelystad Airport Businesspark and its rural environment
- This will combine renewable energy and electric mobility to optimise the area's energy system while reducing carbon emissions



Background & learnings

In Flevoland we are facing a major area development of the Lelystad Airport/ Lelystad Airport Business Park. The area has a large potential for solar energy (roofs of logistics centers, solar canopies on the car parks, surrounding farmers developing solar projects). And obviously, the area has a growing need for energy as well. Also in terms of mobility there are large developments: passengers coming to the airport with cars, commuters, taxi's, rental cars, first initiatives of car sharing, EV charging infrastructure and trucks from the logistics centers.

It is still partly a greenfield area, but there are multiple plans, and several projects already running (like PowerParking). The Royal Seaport Project in Stockholm made us aware of the need to develop an overarching plan for the area, including an energy simulation and the design of a smart grid.

Stockholm

Lelystad

good practice exchange

For more information, please contact:

Karin Maatje – Department of Area Development and Europe, Province of Flevoland
Karin.Maatje@flevoland.nl