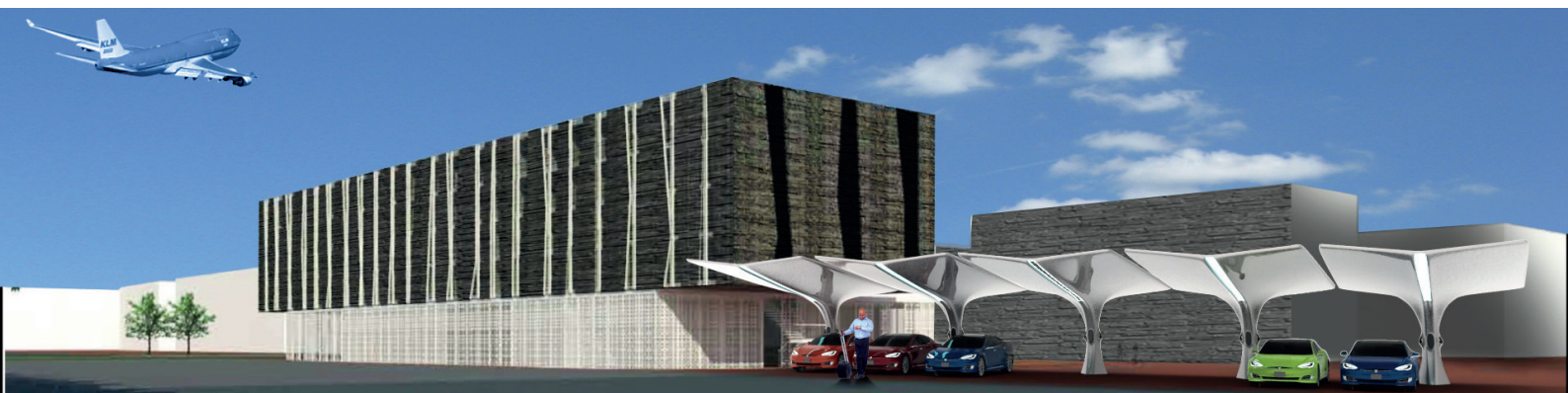


## PowerParking, Flevoland, The Netherlands

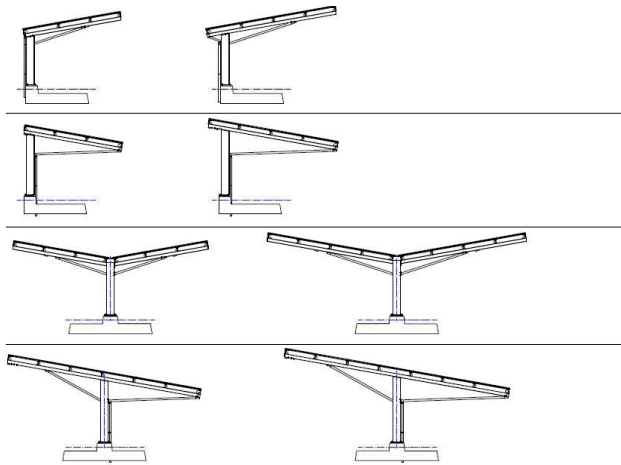
### In brief:

PowerParking is an innovative project, co-financed by the ERDF, in which part of the car parks at Lelystad Airport and Lelystad Airport Business Park will be developed into integrated local energy plants. The car parks will have a canopy of solar panels. The solar energy is used locally to charge electric vehicles and for the needs of the business environment. The excess of energy is stored in a stationary battery and - on an experimental scale - in the batteries of parked cars (vehicle to grid). By means of a smart management system, the energy will be used in the most efficient way, which reduces the unbalance on the grid and the need for grid extension.

The private partners in PowerParking are developing a viable business case for roll-out to other large car parks.



### Possible solar carport types



### The advantages of PowerParking

- Creates non-competitive space for production of renewable energy, because of double use of the car park
- The smart system reduces the need for grid investments and helps to balance the grid
- Creates new business opportunities
- Stimulates the use of electric transport by creating charging facilities
- Contributes to reduction of fossil fuels and CO<sub>2</sub> emissions

### Project Partners



### For more information, please contact:

Karin Maatje – Department of Area Development and Europe, Province of Flevoland  
Karin.Maatje@flevoland.nl