



European Union  
European Regional  
Development Fund

## Action Plan: Progress & Results

**Will Pratt**

Principal Transport Planning Officer

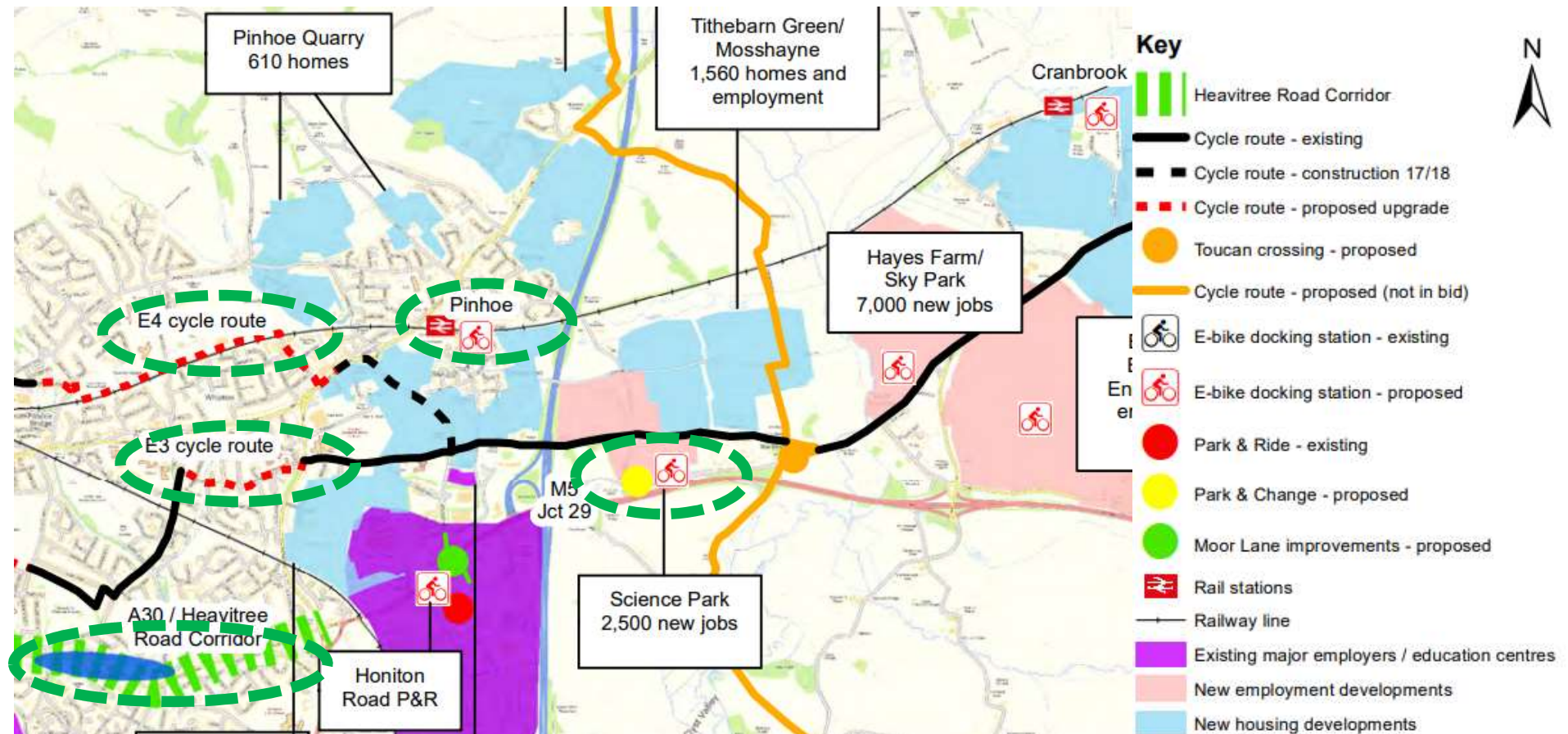


07 April 2021 | Final Conference

# Overview - 5 Actions

	Action	Cost	Developer £
1	Park and Change at Exeter Science Park	£2.6m	£1.35m
2	E4 Strategic Cycle Route	£3.4m	£1.5m
3	E3 Strategic Cycle Route	£750,000	£200,000
4	Pinhoe Station Interchange	£449,400	£125,000
5	Heavitree Road Corridor Enhancement Scheme - Optioneering	£140,000	

# Align Land Use & Transport Planning

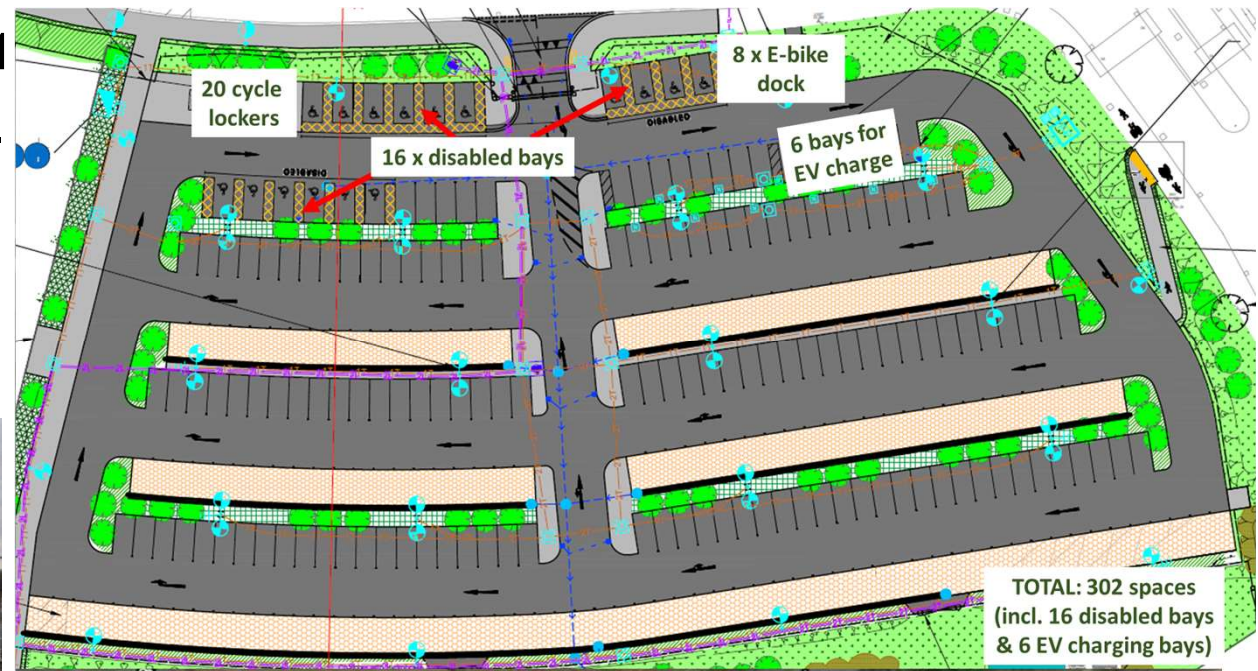


## Align Land Use & Transport Planning to Pricing and Financing of Projects

# Action 1 - Park and Change at Exeter Science Park

300-space Park and Change facility onto local bus services, including electric bike hire docking station. Sits adjacent to the E4 strategic cycle network - with scope for Park and Cycle.

- Cabinet Approval Dec 201
- Construction March 2020.
- **Completed Oct 2020**
- *Opening on hold due to COVID-19.*

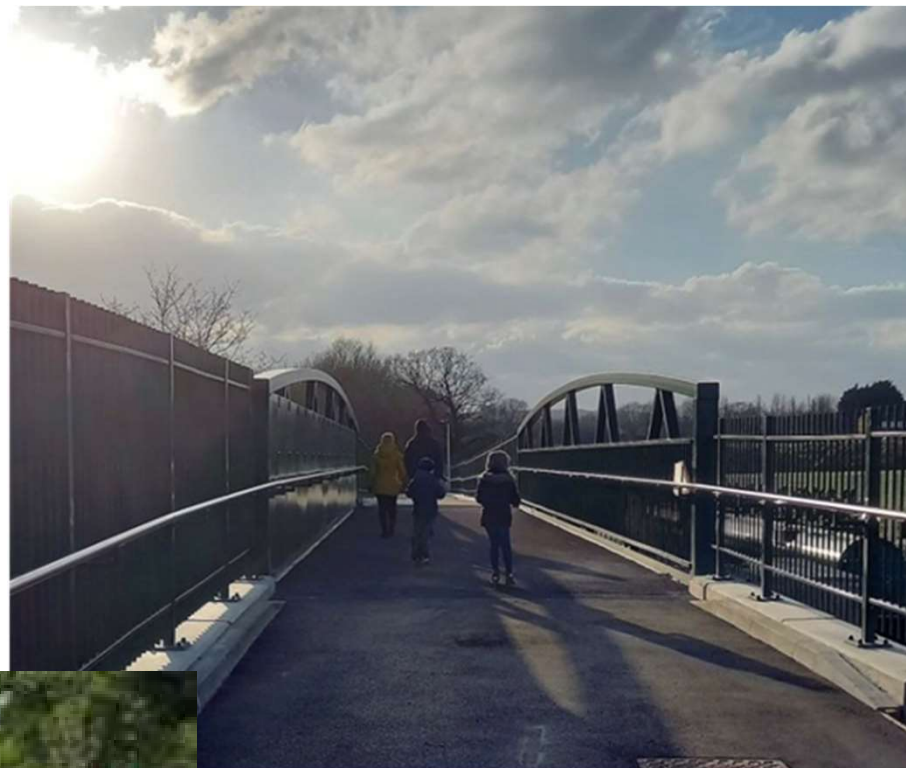




# Action 2 – E4 Strategic Cycle Route



**Phase 2a – Exhibition Fields**



**Phase 3 – Summer Lane Bridge**



**Phase 2b – Exhibition Way**

# Action 3 – E3 Strategic Cycle route

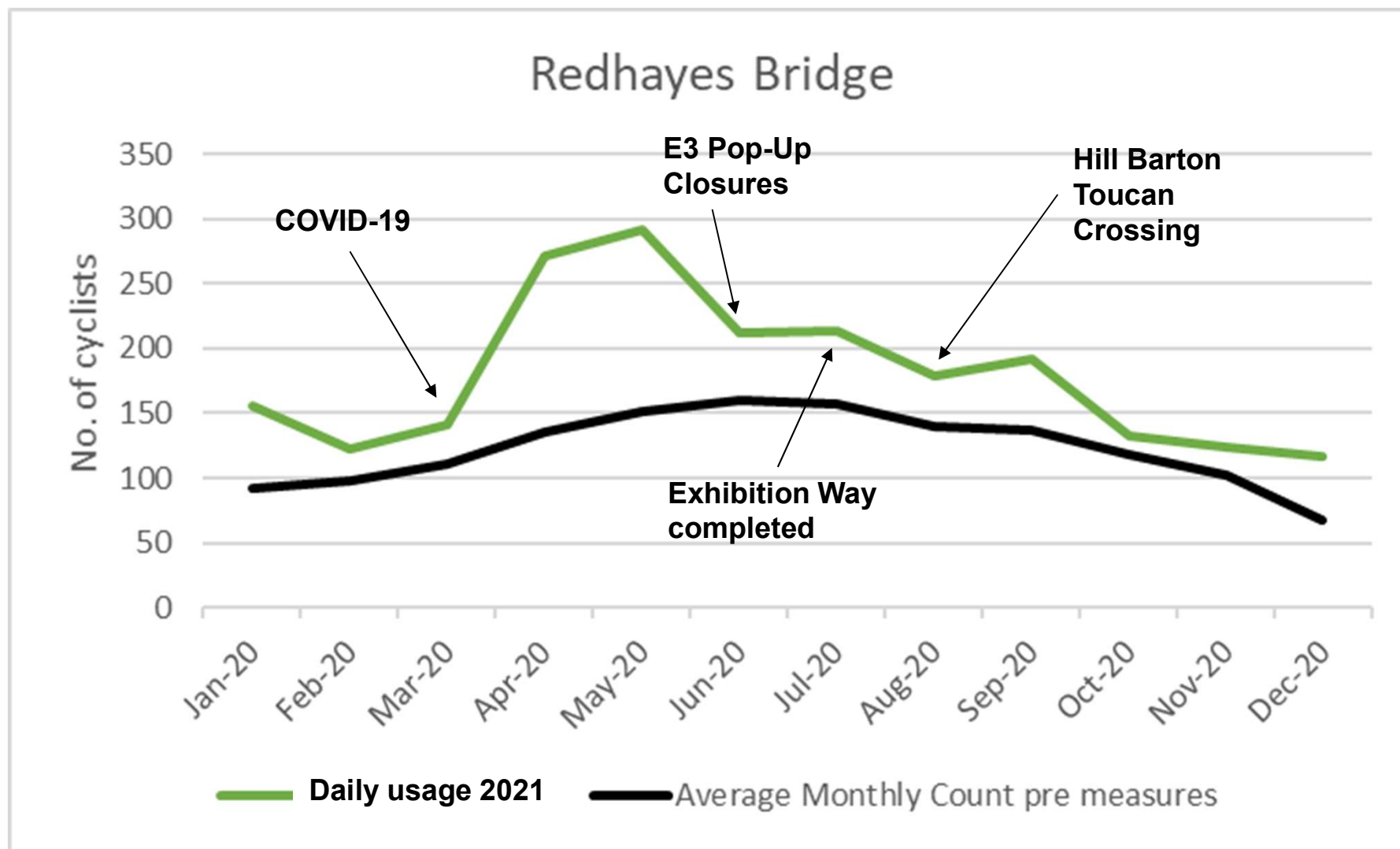


**Hill Barton Toucan Crossing**



**School Traffic Calming**

# Monitoring – E4/E3 Cycle routes

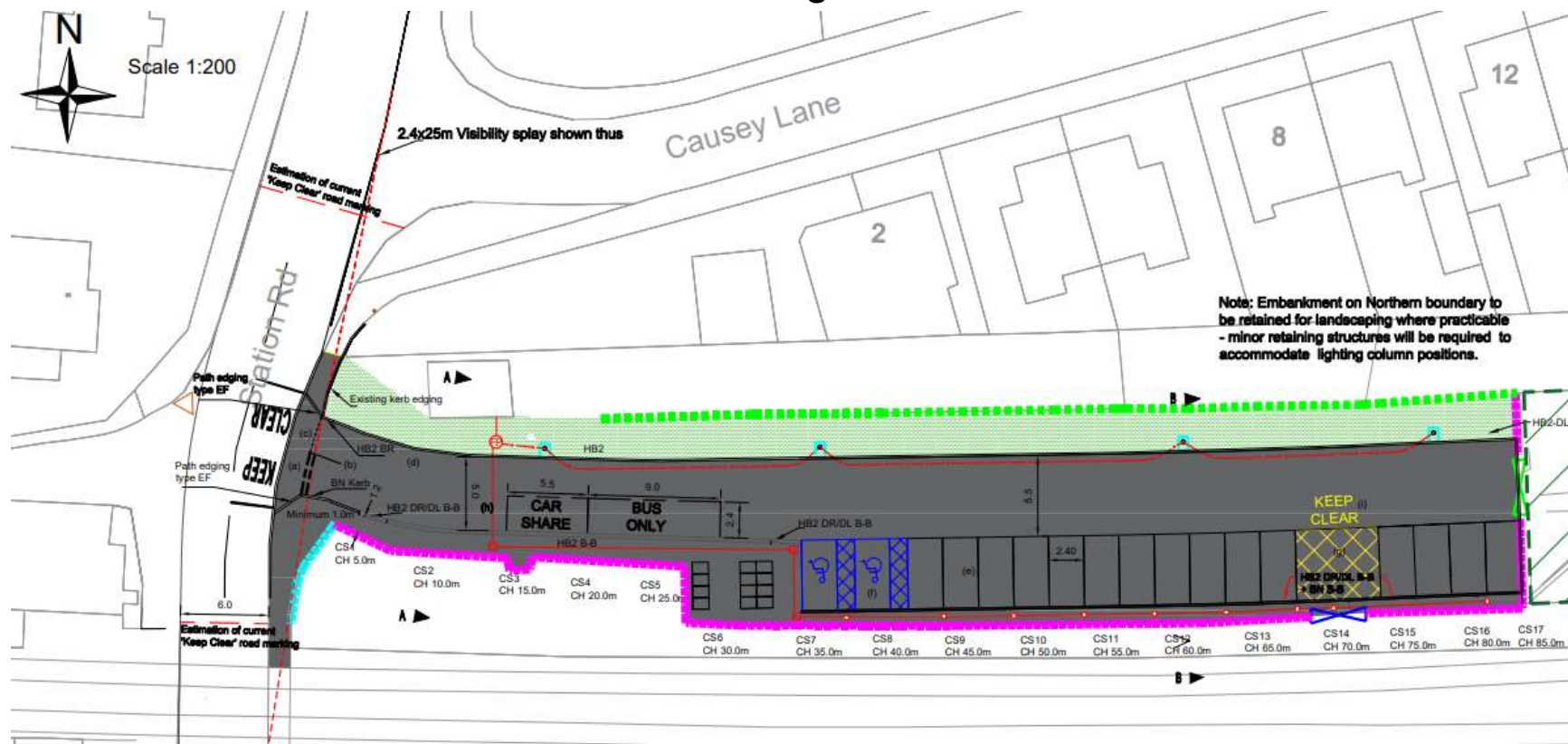




# Action 4 –Pinhoe Station Interchange

Upgrade of interchange facilities at mainline station in growth area

- Approval to construct March 2021.
- Construction beginning Spring 2021.
- The planning application was originally to be put in Spring 2020, but delayed due to uncertainties on consultation during COVID-19 Pandemic

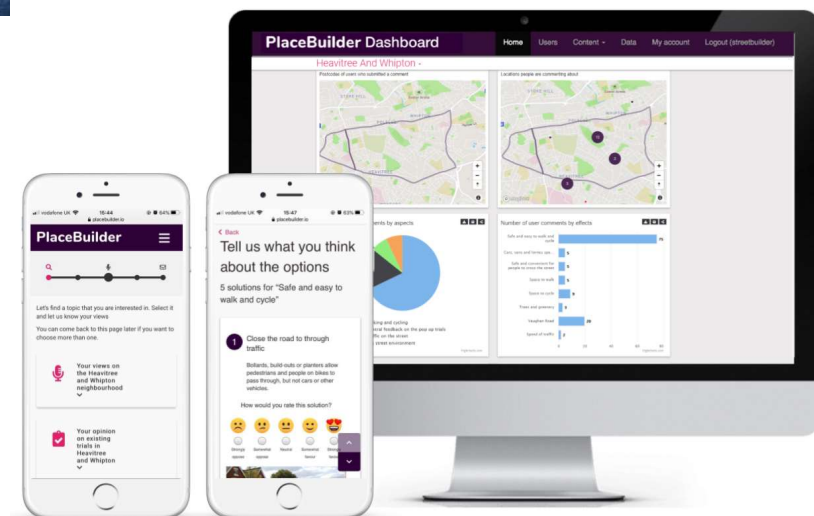




# Action 5 – Heavitree Road



- Data collection complete
- Area Wide Consultation Nov/Dec 2020
- Optioneering Summer 2021.
- Delayed by COVID-19 Pandemic.



# Supported by Behaviour Change Programs



Access To Education Team

Marketing and  
Engagement



To have your say, visit: [www.placebuilder.io/exeterstreets](http://www.placebuilder.io/exeterstreets)



[www.commute-Exeter.com](http://www.commute-Exeter.com)



Engaged Smart  
Transport Project

# Summary

Action	Progress
1- Park & Change at Exeter Science Park	
2- E4 Strategic Cycle Route	
3- E3 Strategic Cycle Route	
4- Pinhoe Station Interchange	
5- Heavitree Corridor Enhancement	





# InnovaSUMP

Interreg Europe



European Union  
European Regional  
Development Fund

## Thank you!



Questions welcome



*Projects media*

---