



European Union
European Regional
Development Fund

Travel behavior as a determining factor for sustainable transport measures

Polykarpos Karkavitsas

Transport consultant of the Municipality of Kordelio-Evosmos



ΔΗΜΟΣ
ΚΟΡΔΕΛΙΟΥ
ΕΥΟΣΜΟΥ

Georgios Makridis / Mechanical Engineer & **Elpi Voutsas** / Economist MBA

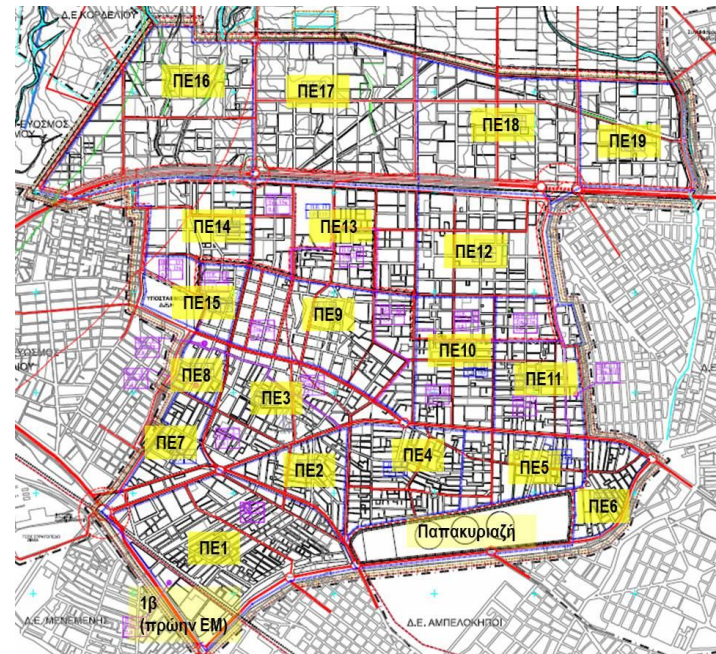
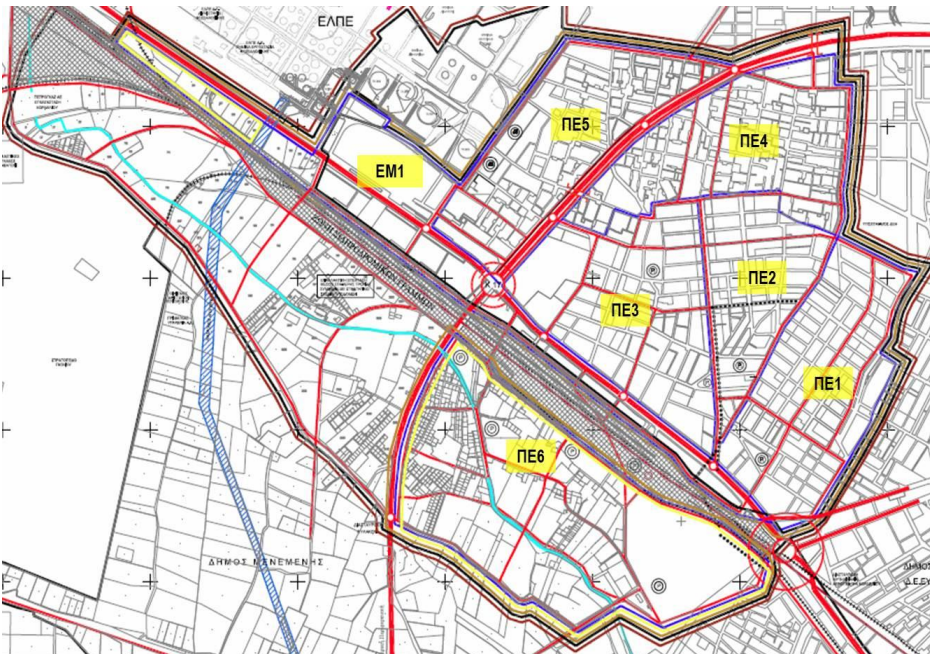
Municipality of Kordelio Evosmos

7th -8th June, 2017 | Interregional Workshop A, Prague

Kordelio-Evosmos Overview

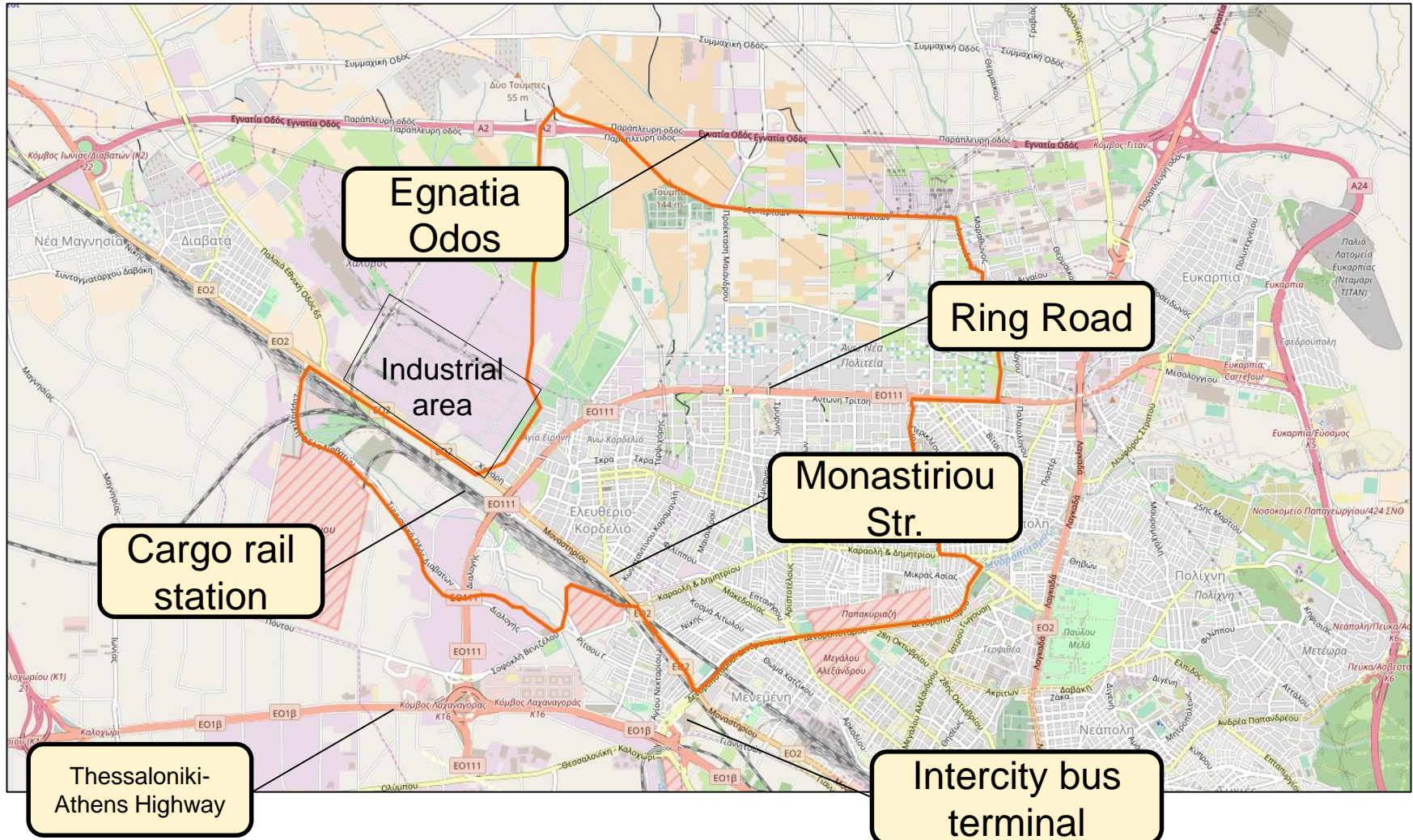
General Facts

- Merge of 2 separate municipalities in 2010
- Population: 100.000 citizens
- Combination of industrial and residential areas



Kordelio-Evosmos Overview

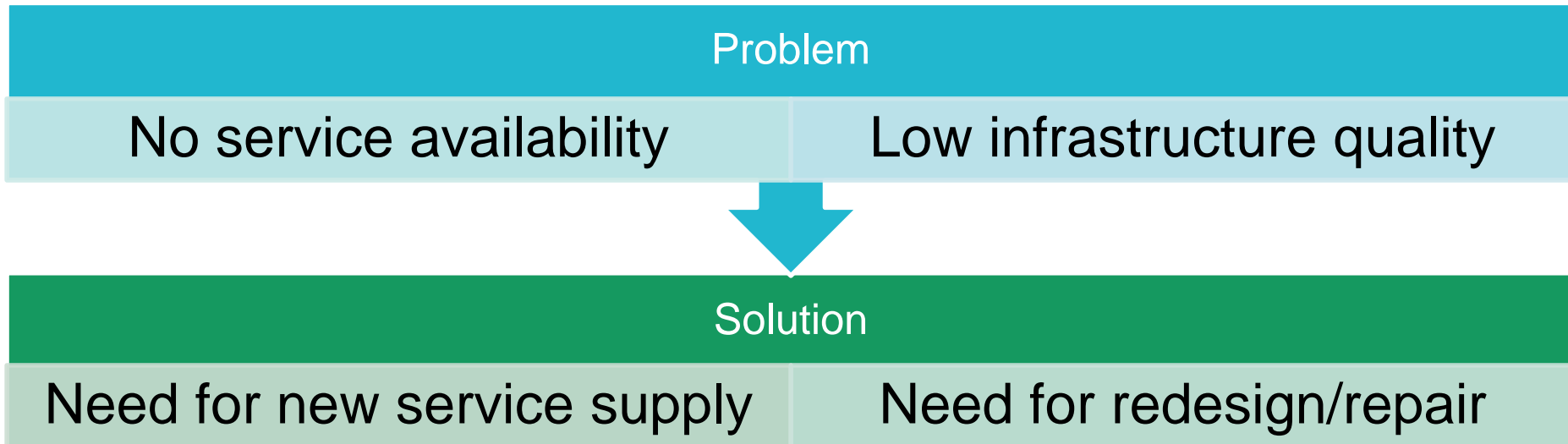
Transport network overview



IMPLEMENTED MOBILITY MEASURES

Mobility measures

Current measure planning approach



Attraction of new users

Mobility measures

Actions towards sustainable mobility

Walking

- Development of green space (parks, green parklets, etc.)
- Upgrade of sidewalk infrastructure

Cycling

- Development of cycling infrastructure
- Introduction of bike sharing system infrastructure

Vulnerable users

- Redesign and reconstruction of sidewalk infrastructure

Motor-vehicle measures

- Construction of off-street parking infrastructure
- Road repair/resurfacing

Mobility measures

Cycling promotion



Sidewalk reconstruction, vulnerable user infrastructure



Mobility measures

Off-street parking infrastructure



Road repair-resurfacing



USER PARTICIPATION TO TRANSPORT DESIGN

Travel behaviour determination

How to determine travel behavior?



Consultation processes

Travellers express their problems, needs, ideas on certain issues regarding mobility



Public Surveys

Determination of travel habits (customer satisfaction, stated preference surveys, origin-destination surveys) → Preference on trip modes and routes, number of daily trips, Kms travelled etc.)

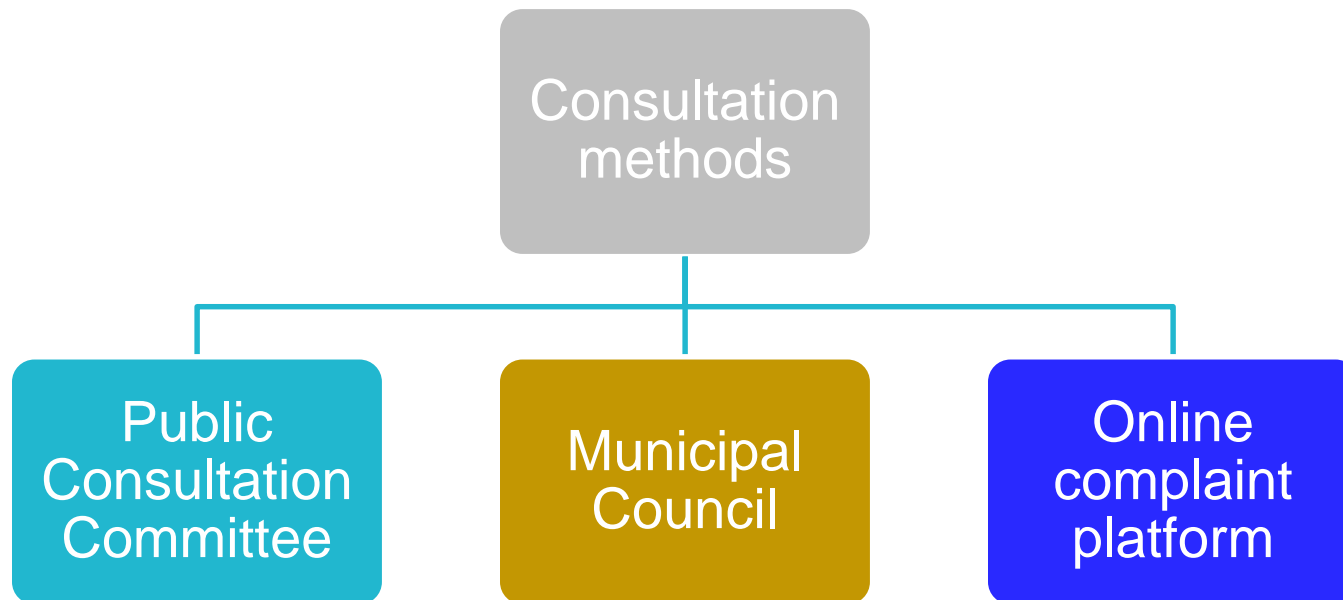


IT applications

- Travel Patterns
- Service demand
- Traffic characteristics-parameters (traffic delay, queue length, etc.)

Public consultation

The Municipality of Kordelio-Evosmos has a series of methods-tools for the collection of travellers' preferences and public opinion



The 3 tools cover a wide variety of topics, ranging from policy-making to everyday issues.

Public Consultation Committee

Composition	Is consisted of local stakeholders
	25-50 participants
	1/3 of the participants are elected citizens
Jurisdiction	Provides opinion on the municipality's Development and Action plan
	Provides opinion on local issues of general interest
	Analysis of local problems and development potential
	Consultive and not decisive role

Public consultation

Public Consultation Committee



Public consultation

Municipal Council

Characteristics

- It assembles at least once a month or in important circumstances
- Open procedure for all citizens
- Its agenda covers all municipal issues

Citizen benefits

- Active participation to decision-making
- Communication of every-day problems directly to the municipal council
- Briefing on current and future issues
- Representation of social (including vulnerable) groups



Public consultation

Online complaint platform

What is it?

- Online complaint form
- Available for individuals and enterprises

How does it help?

- Direct complaint communication
- Reduction of needs for making trips
- Support of vulnerable users

Ηλεκτρονικά Αιτήματα
Δήμος Κορδελιού-Ευόσμου

Γενικά Εγγραφή Διαδικασία Συχνές Ερωτήσεις

ΚΑΤΑΓΓΕΛΙΑ ΓΙΑ ΑΜΕΣΑ ΘΙΓΟΜΕΝΟ ΠΟΛΙΤΗ

Συμπληρώνετε τα προσωπικά σας στοιχεία που απαιτούνται στην παρακάτω φόρμα

Κατηγορίες Αιτημάτων
Επιλέξτε μία κατηγορία από το παρακάτω μενού για να μάθετε περισσότερα

- Δημοτολόγιο
- Μητρώο Αρρένων
- Ληξιαρχείο
- Κοινωνικές Δράσεις
- Περιβάλλον-Ανακύκλωση
- Συμπαραστάτης του Δημότη και της Επιχείρησης**
- Καταγγελία για Άμεσα Θιγόμενο Πολίτη
- Καταγγελία για Άμεσα Θιγόμενη Επιχείρηση

Παρακαλώ συμπληρώστε τα ατομικά σας στοιχεία

Επώνυμο * Όνομα *

Τύπος Ταυτότητας * Αριθμός Ταυτότητας *

Δελτίο Αστυνομικής Ταυτότητας ▼

Παρακαλώ συμπληρώστε τα στοιχεία επικοινωνίας

Διεύθυνση * ΤΚ *

Περιοχή * Πόλη

Τηλέφωνο οικίας ή εργασίας Τηλέφωνο κινητό

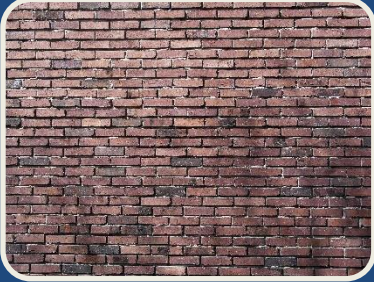
Fax Email

Επιθυμητός τρόπος επικοινωνίας * Συμπληρώστε τη διεύθυνση σε μορφή "xxx@xxx.xx"

Τηλέφωνο οικίας ή εργασίας ▼

Copyright © 2009 Δήμος Κορδελιού Ευόσμου. All Rights Reserved
Προστασία Προσωπικών Δεδομένων | Όροι Χρήσης

BARRIERS TO INCLUSION OF USER RESPONSE TO MEASURE IMPLEMENTATION



Barriers

- Lack of consultation culture
- Red tape issues

Consultation Culture

- Consultation processes are new to Greek public authorities
- There is limited experience in the organisation of consultation workshops
- The public are not fully aware of their capabilities in the design process
- Induced in national legislation since 2010

Consultation barriers

Red tape issues



Dissociation of jurisdiction between authorities (municipal, regional)



Occasionally the citizens' needs cannot be met



The public feel they are not heard



They abstain from consultation meetings

TRAVEL BEHAVIOUR DETERMINATION PRACTICES APPLIED IN THESSALONIKI'S LARGER URBAN ZONE

Travel behaviour determination in Thessaloniki

Travel behaviour determination

Consultation
procedures

Public
Surveys

IT
applications

Thessaloniki's
SUMP

Thessaloniki's
Metro system

Western
suburban
railway

A.U.Th

Thessaloniki's
public
transport
authority

Hellenic
Institute of
Transport

Municipality of
Thessaloniki

Travel behaviour determination in Thessaloniki

Thessaloniki's SUMP



Completed in 2014

1st SUMP in Greece

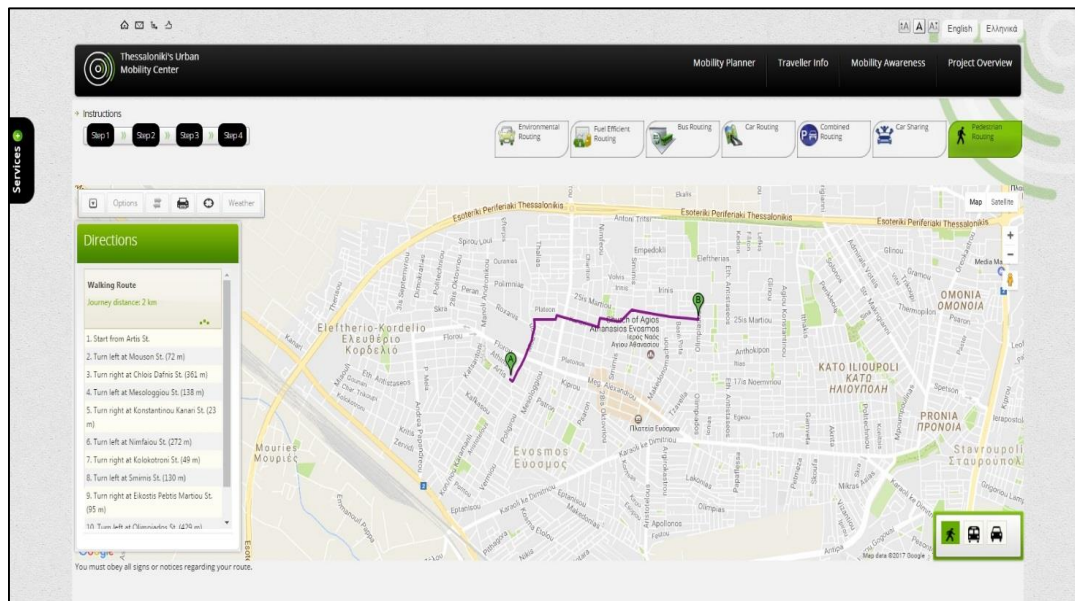
4 consultation stages



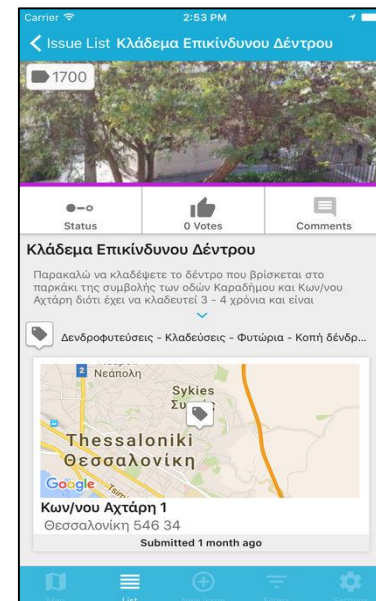
Travel behavior determination in Thessaloniki

IT solutions

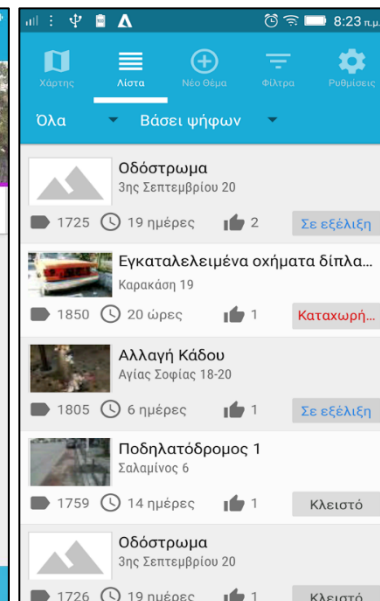
- Collection of vehicle travel time through innovative IT systems
- Route planning application, live congestion levels
- Prioritization of routes with public-recognized problems and re-routing



Thessaloniki's urban mobility center (mobithess.gr)



IMCity Thess application



InnovaSUMP

Interreg Europe



European Union
European Regional
Development Fund

Thank you!



ΔΗΜΟΣ
ΚΟΡΦΑΛΙΟΥ
ΕΥΟΣΜΟΥ

Questions welcome



Projects media