

International Policy in Overijssel

GO4EXPORT & MORE

Inside Out EU 
Interreg Europe

provincie  Overijssel

Competencies of the Province

- Sustainable spatial development, including water management.
- Environment, energy and climate
- Vital countryside
- Regional accessibility and regional public transport
- Regional economy
- Cultural infrastructure and preservation
- Quality of public administration

Inside Out EU
Interreg Europe

provincie  Overijssel

Competencies of the Province

- Sustainable spatial development, including water management.
- Environment, energy and climate
- Vital countryside
- Regional accessibility and regional public transport
- **Regional economy**
- Cultural infrastructure and preservation
- Quality of public administration



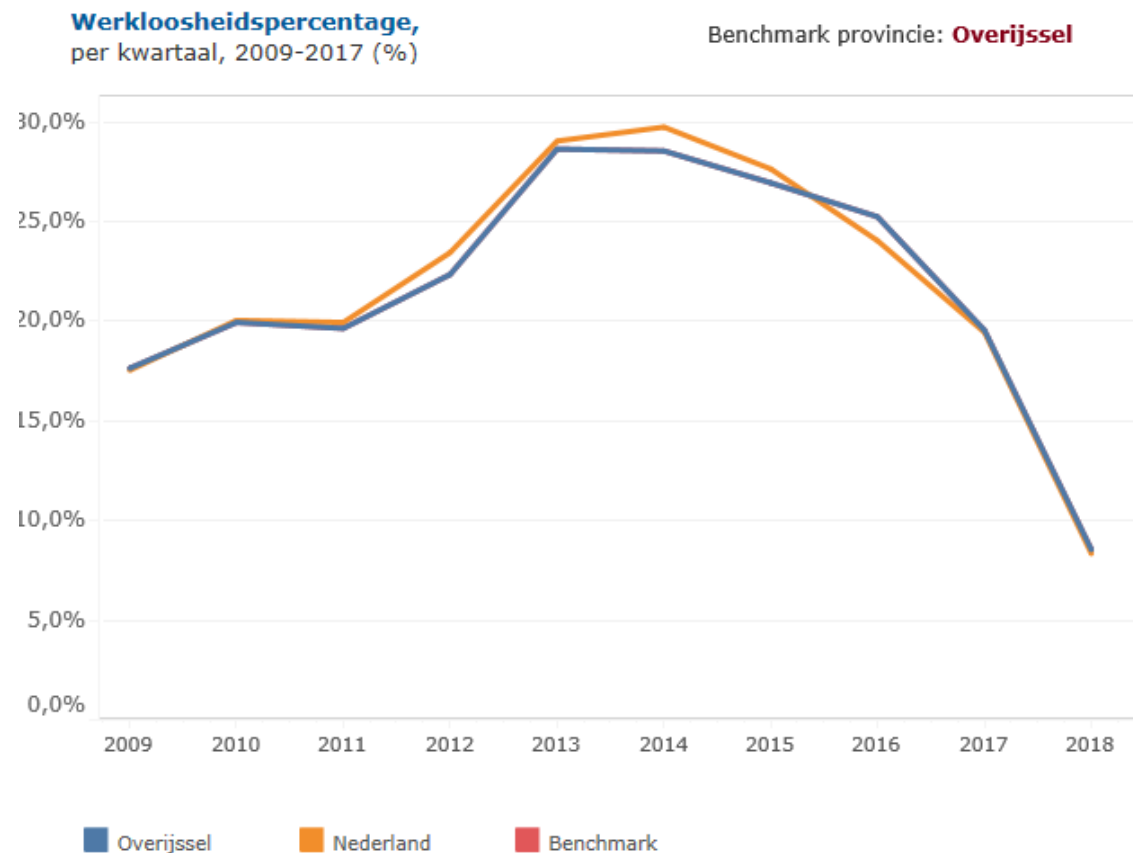
Overijssel in numbers

- Main economic sectors:
 - Manufacturing, Lifesciences & Health, Agro-Food, Trade
- GDP of 40 billion euros
 - 5,5 percent of Dutch economy
- Economic growth 3,4%
 - 3,2% nationally



Overijssel in numbers

- Unemployment



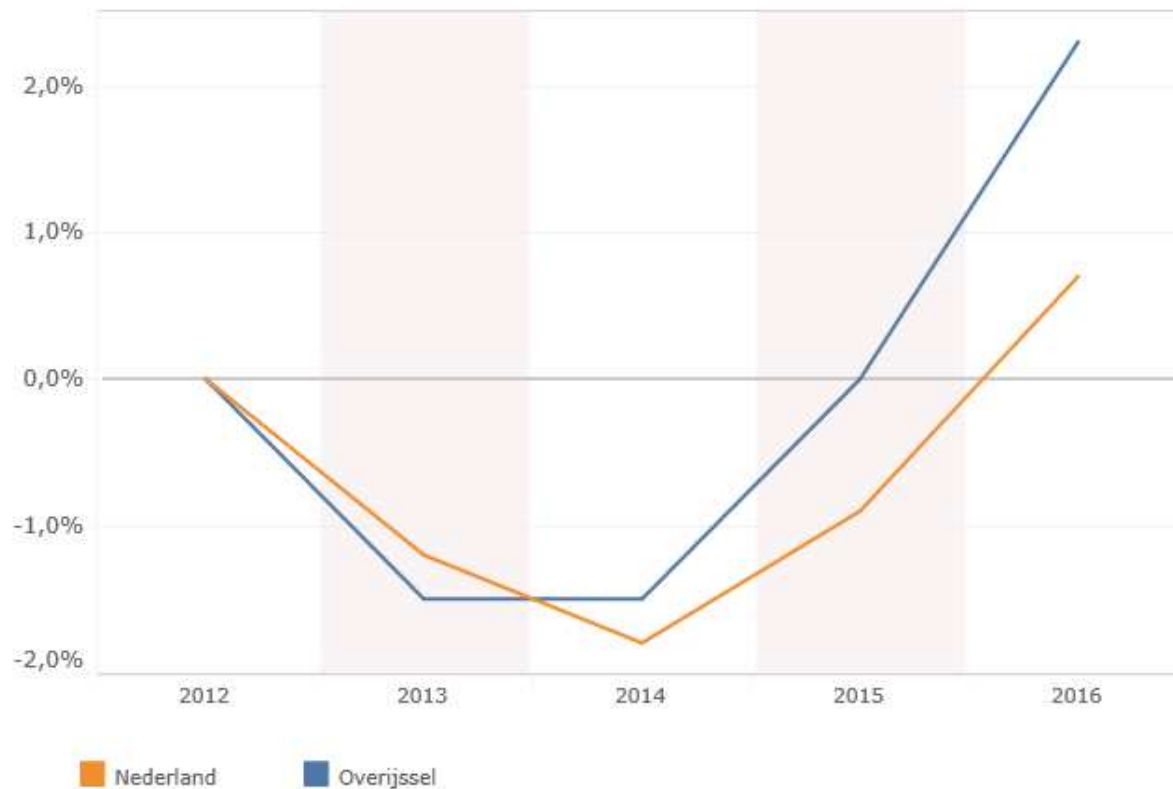
Inside Out EU
Interreg Europe

provincie  Overijssel

Overijssel in numbers

- Employment SME's

Ontwikkeling aantal werkzame personen in het MKB,
2012-2016 (% , ten opzichte van 2012)

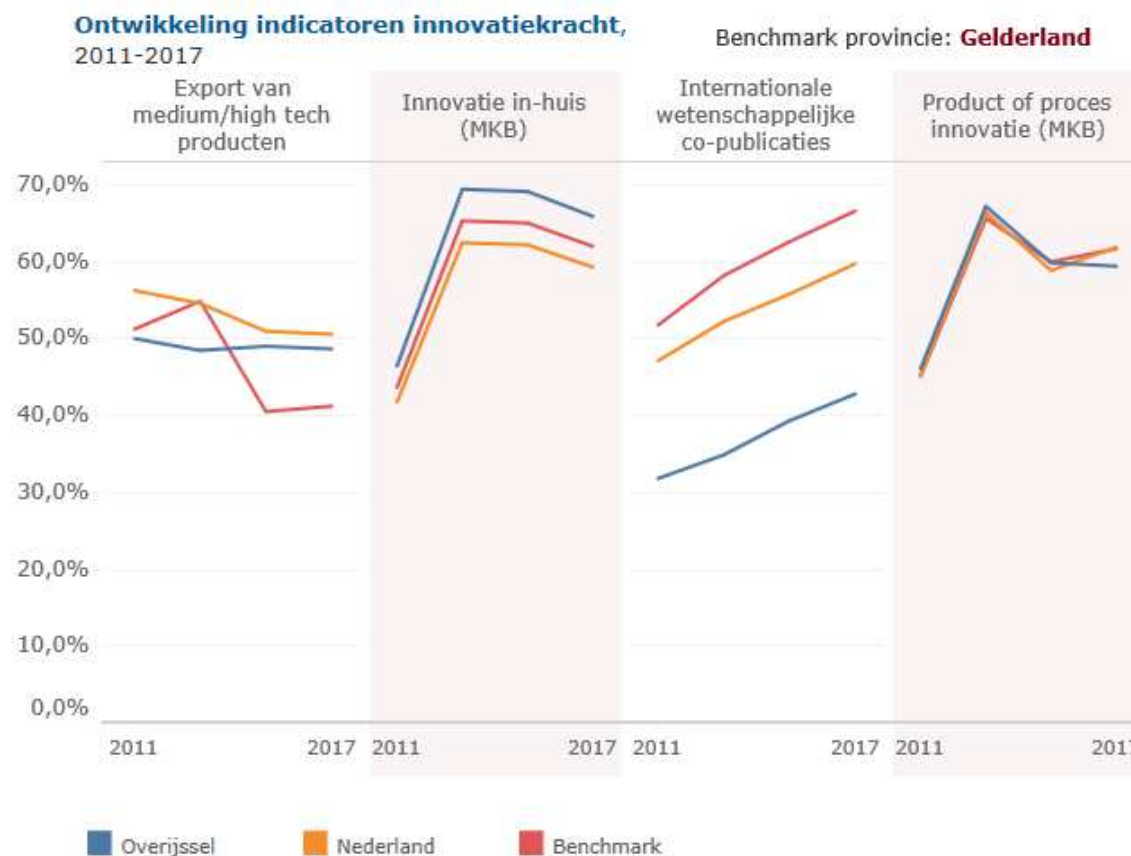


Inside Out EU
Interreg Europe

provincie Overijssel

Overijssel in numbers

- Innovation among SME's

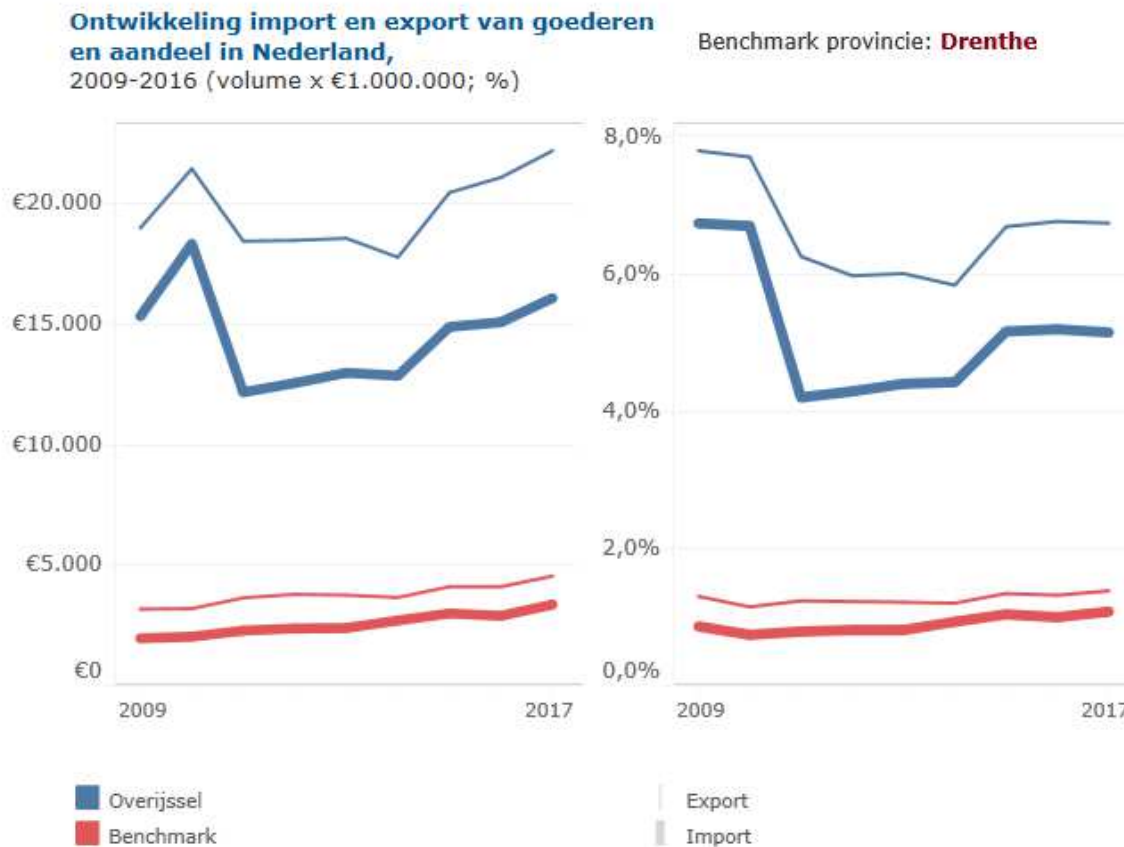


Inside Out EU
Interreg Europe

provincie Overijssel

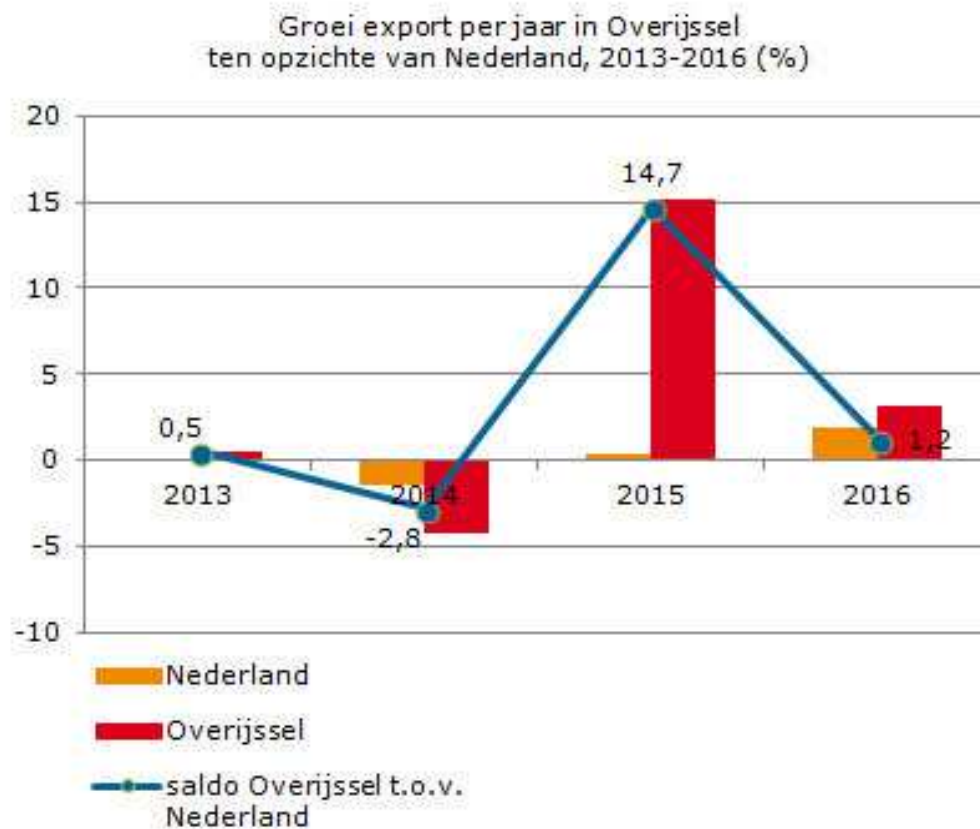
Overijssel in numbers

- Export Volume



Overijssel in numbers

- Export Growth



Bron: CBS/bewerking team Beleidsinformatie

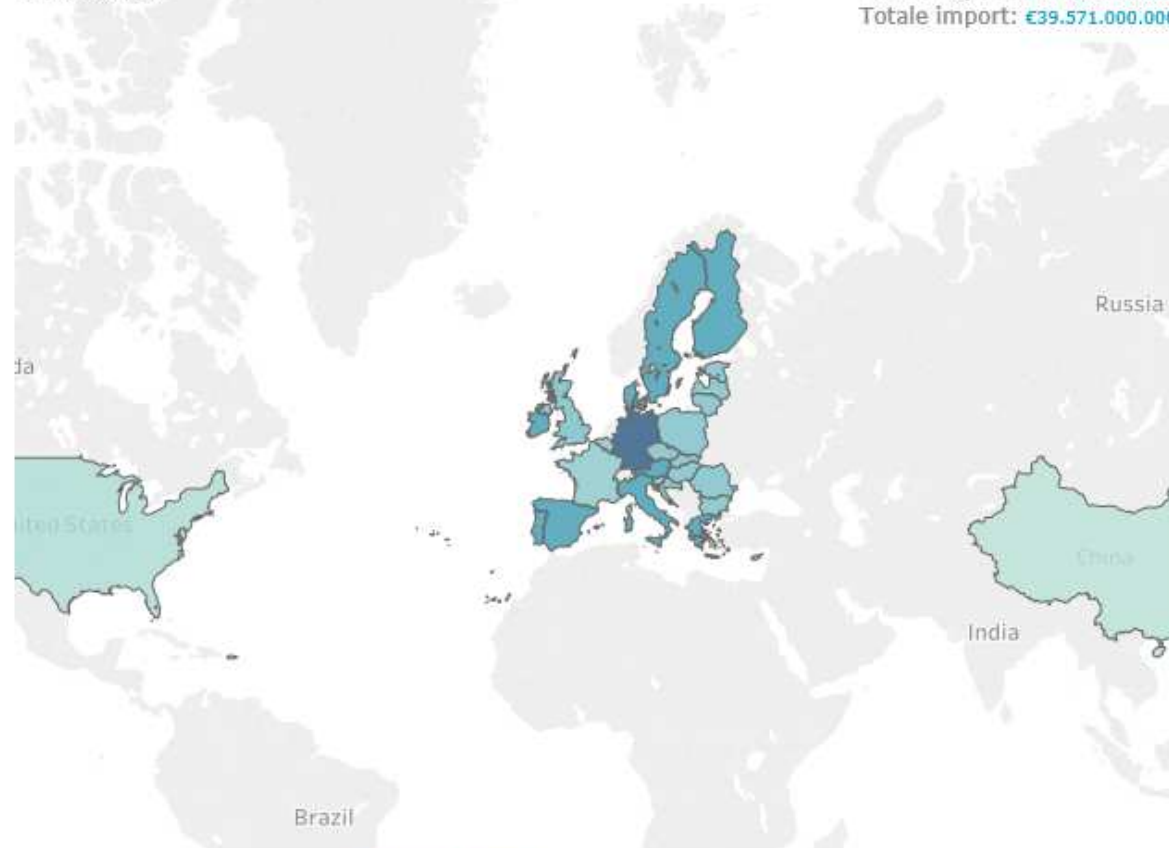
Inside Out EU
Interreg Europe

provincie Overijssel

Overijssel in numbers

Import en export van goederen naar handelsland
2009-2017

Handel van **Overijssel**
Totale export: €71.925.000.000
Totale import: €39.571.000.000



Rest van de wereld Export: €5.417.000.000 (24% van totaal)
Import: €3.302.000.000 (21% van totaal)

Onbekend Export: €222.000.000 (1% van totaal)
Import: €1.888.000.000 (12% van totaal)

Aandeel Export
2%  25%

Inside Out EU 
Interreg Europe

provincie  Overijssel

Overijssel in numbers

- European funding -> 250m invested



Inside Out EU
Interreg Europe

provincie  Overijssel

Challenges

- Human capital
 - Lack of technical workers
 - Tension on labor market
 - Lack of qualified personnel impedes economic growth
- Innovation rate behind regions like Brainport Eindhoven
- Transition to renewable energy
- Transition to circular economy

Regional Economy

- Coalition period 2016-2019
- Additional €108 million invested in regional economy
- Focus on:
 - Innovation
 - Entrepreneurship
 - Human Capital
 - Business climate
 - Internationalisation
 - New Energy & Circular economy

Innovation and Internationalisation

- GO4EXPORT part of innovation program
 - Why?
- Innovative companies are more resilient, productive and are more successfully internationally



Inside Out EU
Interreg Europe

provincie  Overijssel

International Talent

- Alumni
- Partnership with University Twente and Saxion University of Applied Sciences
- Attracting and keeping talent in Overijssel



Expats

- Expat services
 - Housing, schools, language, visa, permits etc
 - Supporting businesses
- In 2019 full coverage of Overijssel, additional services

Inside Out EU
Interreg Europe

provincie  Overijssel

International School

- Boarding School Eerde
- Bring international accredited education to 'regular' schools
- Dual language programs

Inside Out EU
Interreg Europe

provincie  Overijssel

Brexit

- Threat and opportunity
- Oost NL officer stationed in Londen
- Acquisition for East Netherlands

- Combined with trade promotion
 - Awareness and preparation

Focus on Germany

- Most valuable trade partner
 - More than 25% of export and import
- Two brokers in Germany (GO4EXPORT)
 - Smart Industry (HTSM)
 - Agro-Food
- Relationship with German counterparts, creating opportunities for Dutch businesses

Future policies?

- Election year
- Trade promotion program with Gelderland and Drenthe
- Incorporating societal challenges in policy
- Lessons learned from Inside Out
- SME oriented, incorporating societal challenges
 - Circular economy, labor market, finance etc