



**CISMOB**  
Interreg Europe



# CISMOB Policy Framework

Mobility challenges in CENTRO Region

Bucharest October 9 2017  
Jorge Bandeira, University of Aveiro



# Outline

- **INTERREG EUROPE**
- **CISMOB objectives and main vision**
- **Policy Instruments**
- **Centro Region**
  - **Background**
  - **Suggested measures to stakeholders**
  - **Topics for further discussion**

# What is Interreg Europe?

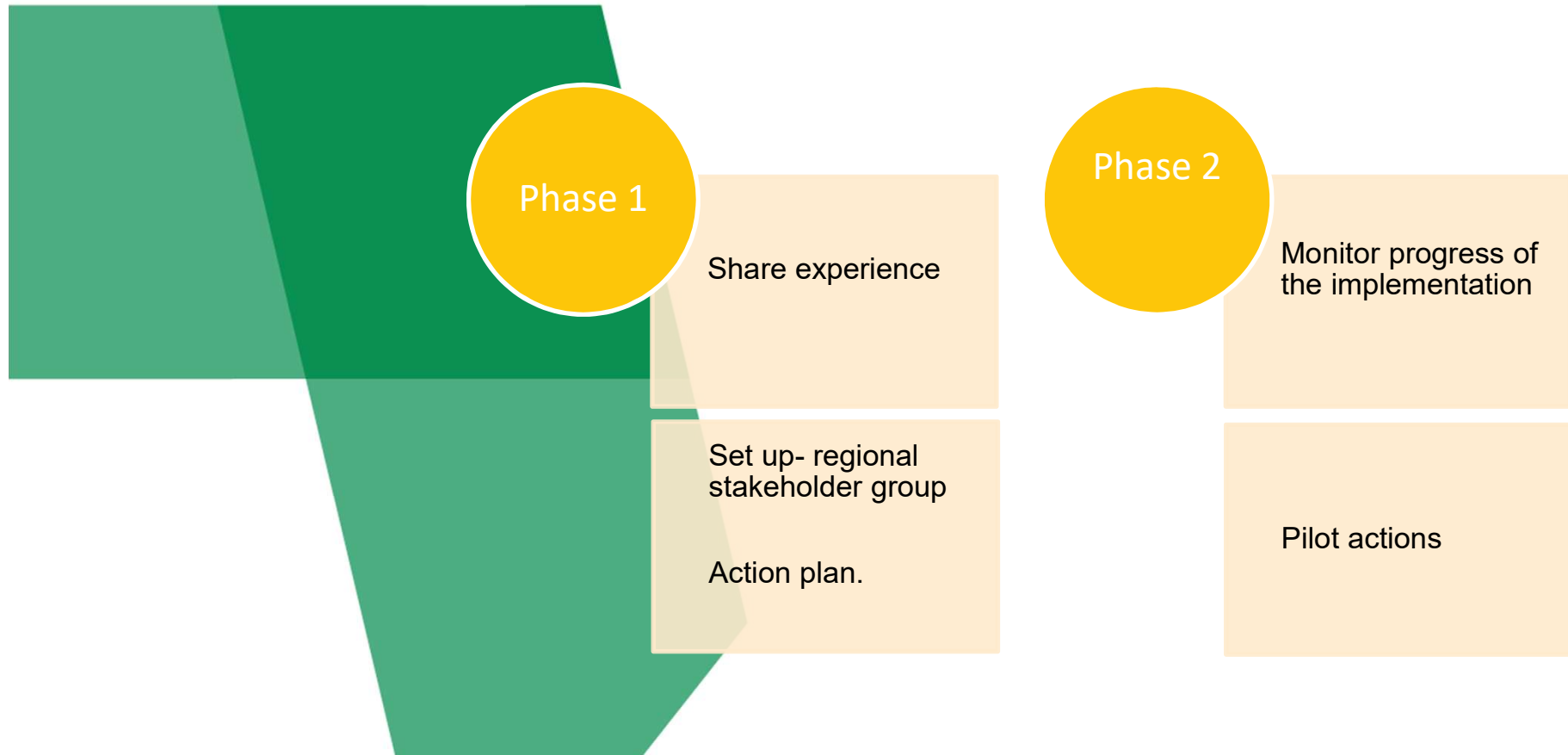
---

European program to help regional and local governments to develop and deliver better policy.

To ensure that government investment, and implementation efforts => integrated and sustainable impact for people and place.



# Inter-regional co-operation



€1,044,774.00

from 1 Apr 2016 to 31 Mar 2020

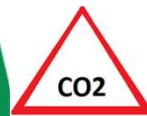
TOPIC  
Low-carbon economy

Phase 1: April 2016 – March 2018  
Phase 2: April 2018 – March 2020

# General statement of the problem

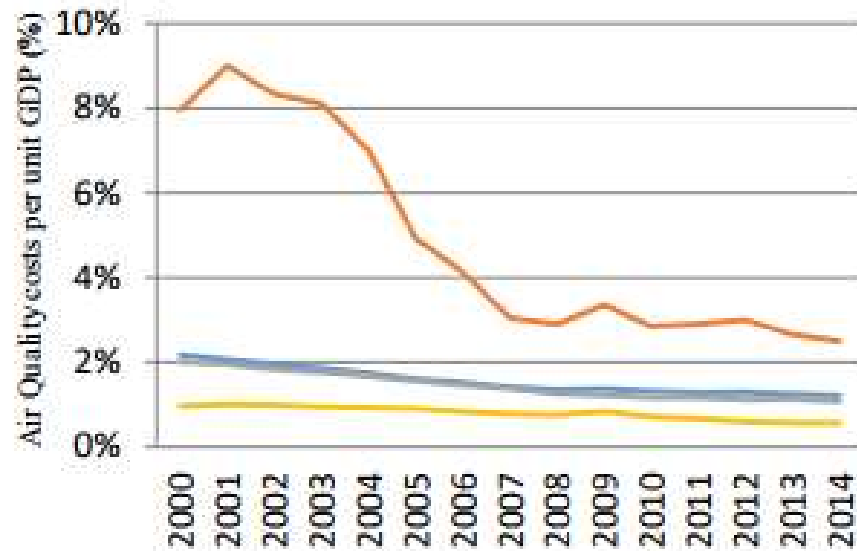


Congestion costs Europe about 1% of GDP;

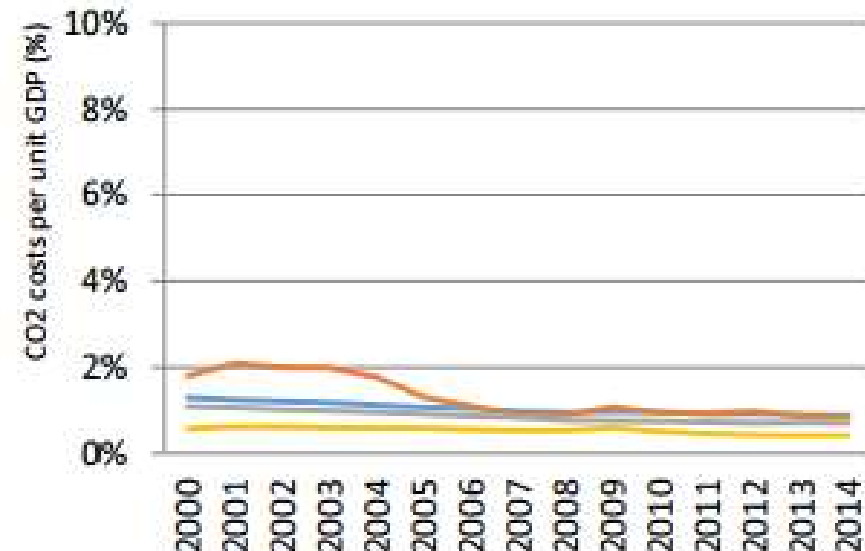


More than 2/3 of transport-related GHG are from road transport;

a Total air pollution costs



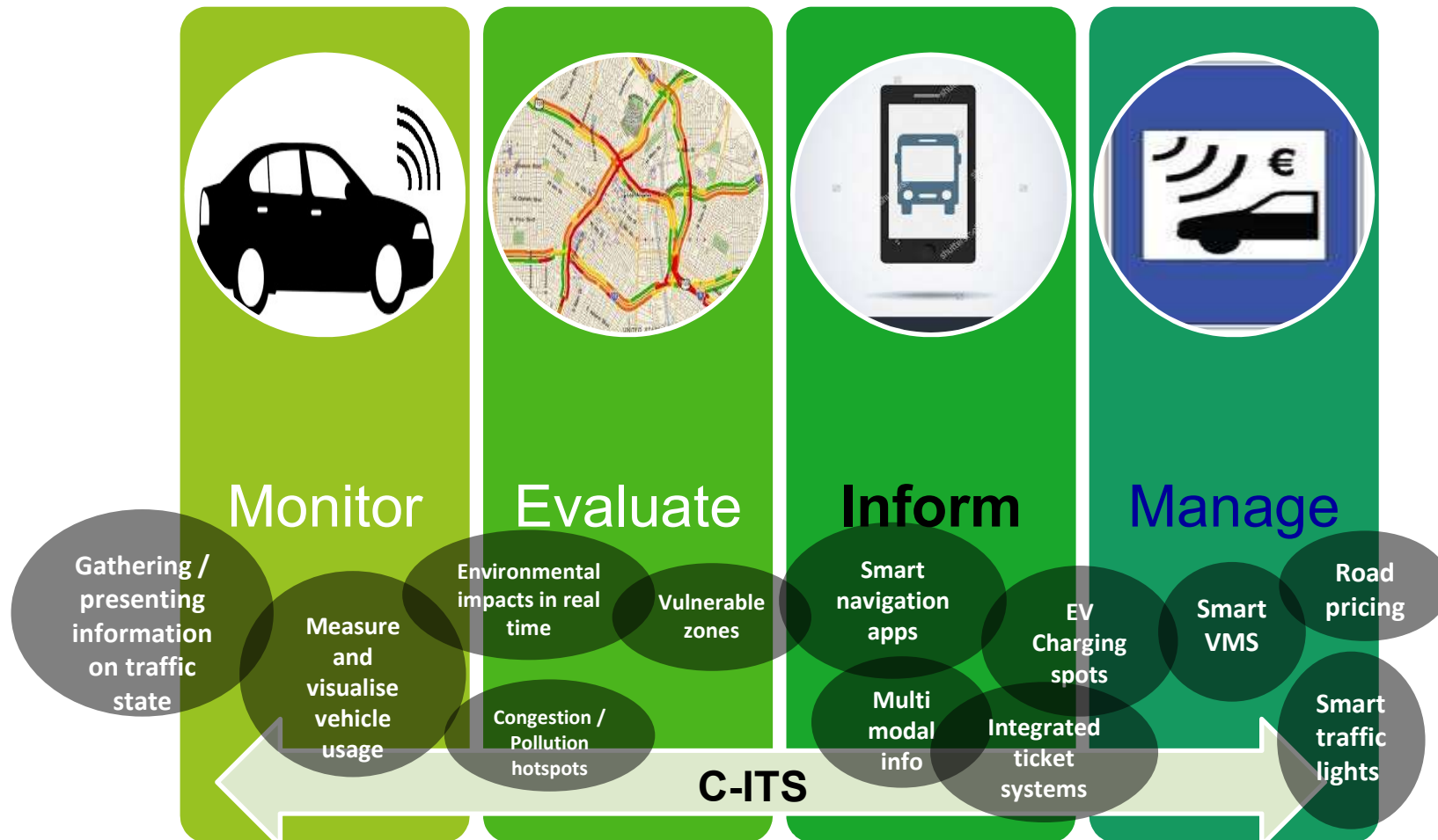
b CO2 emission costs



Portugal  
Spain

Romania  
Sweden

# Opportunity: ICT applications



# Main vision

To increase the sustainability by improving the efficiency in the use of urban transport infrastructure through ICT.



# Consortium

LP



universidade  
de aveiro

P2



Stockholm  
University

P3



ÁGUEDA  
CÂMARA MUNICIPAL

P4



Romania

P5

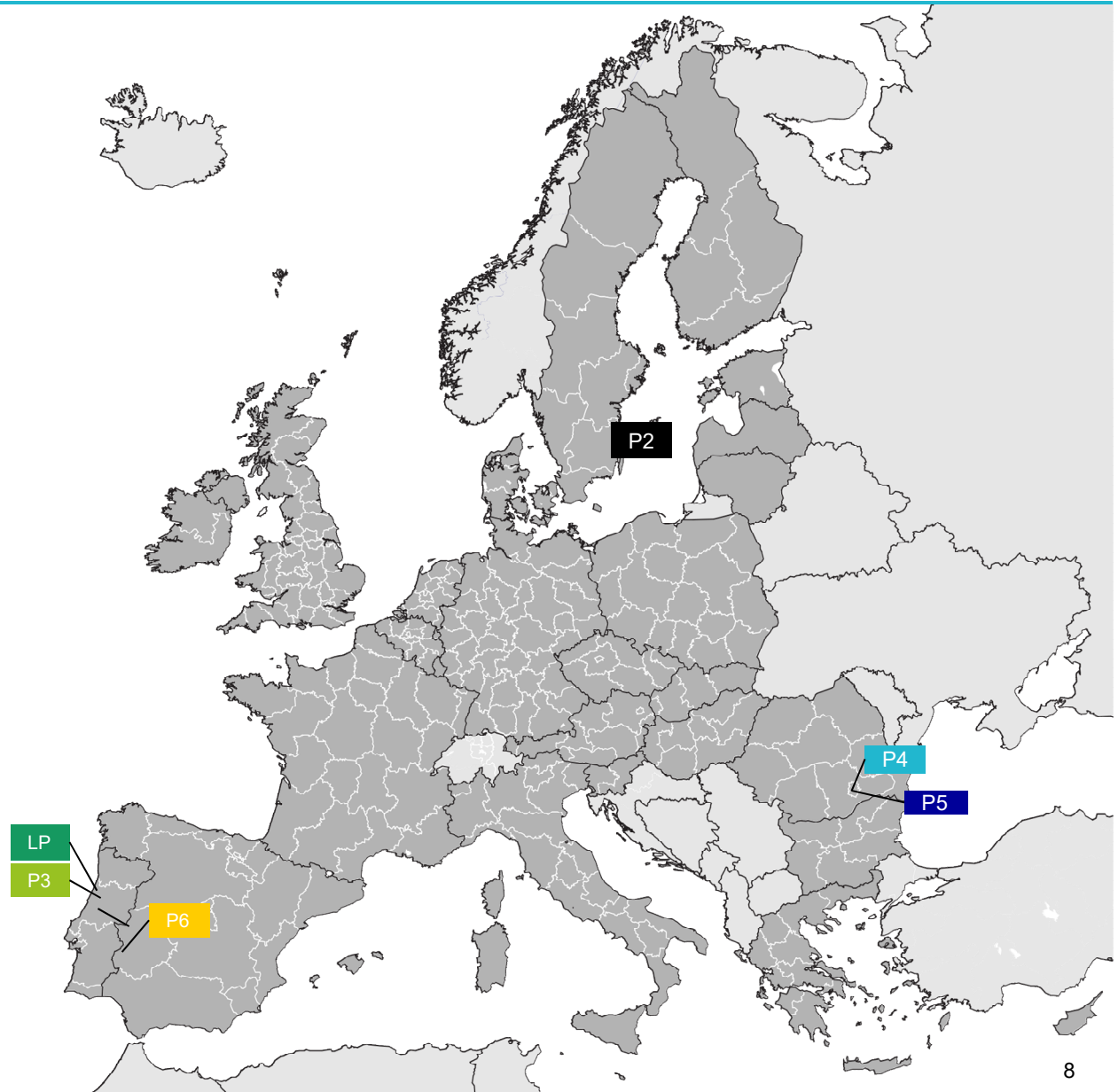


AMTB

P6



agencia extremeña de la energia





# Achieving policy change



- 3 Thematic seminars
- 3 Building capacity workshops
- 12 Staff Exchange program
- 12 Regional Stakeholder meetings



- Baseline Assessment Report
- 12 Technical papers
- AGENDA "ICT towards low carbon and sustainable mobility a multiscale perspective"
- Best practice database
- **5 Action plans**

Policy  
Change

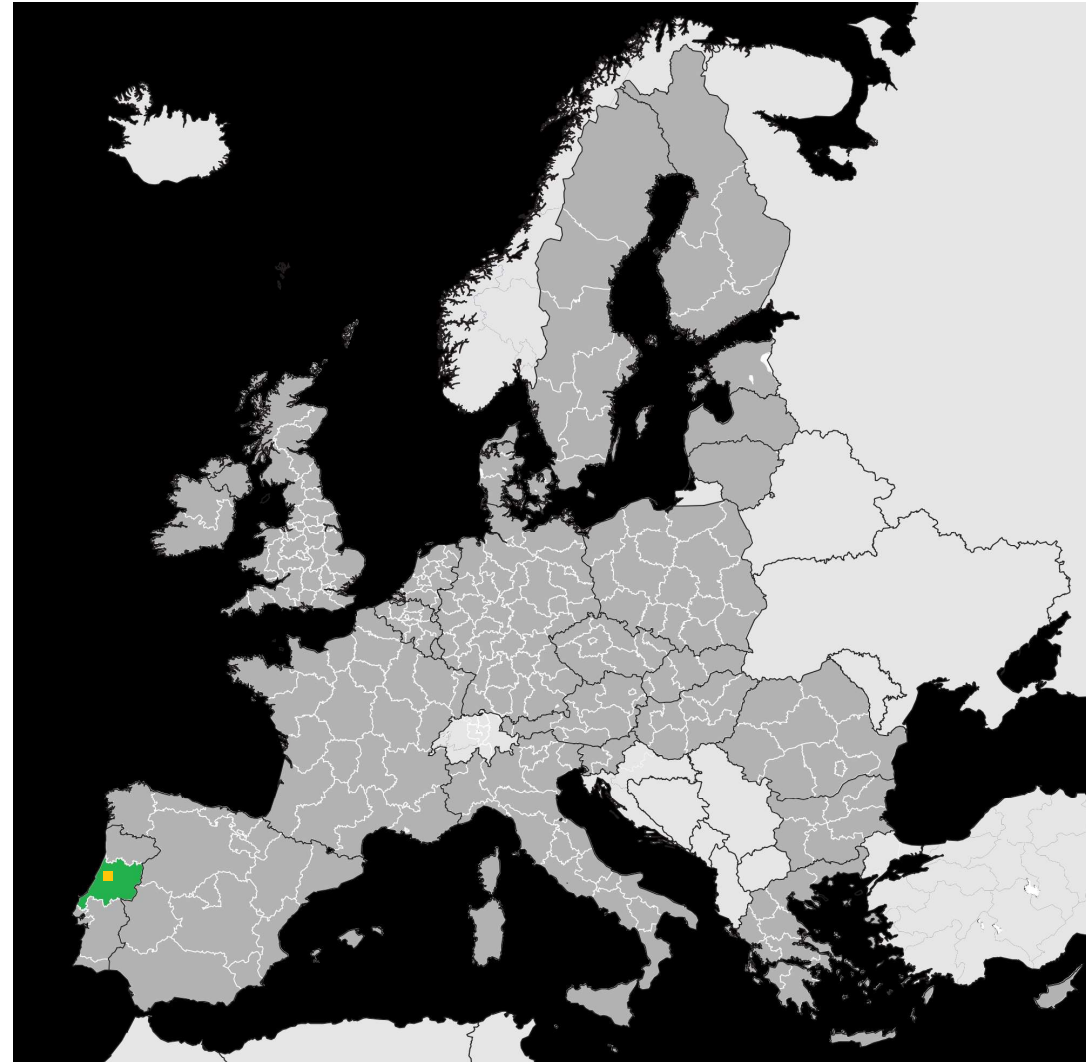
# Policy Instruments (PI PI2)



**PI1: Operational Programme for the  
Centro Region – Centro 2020**



**PI2: Sustainable Mobility Strategy  
for the Municipality of Águeda**

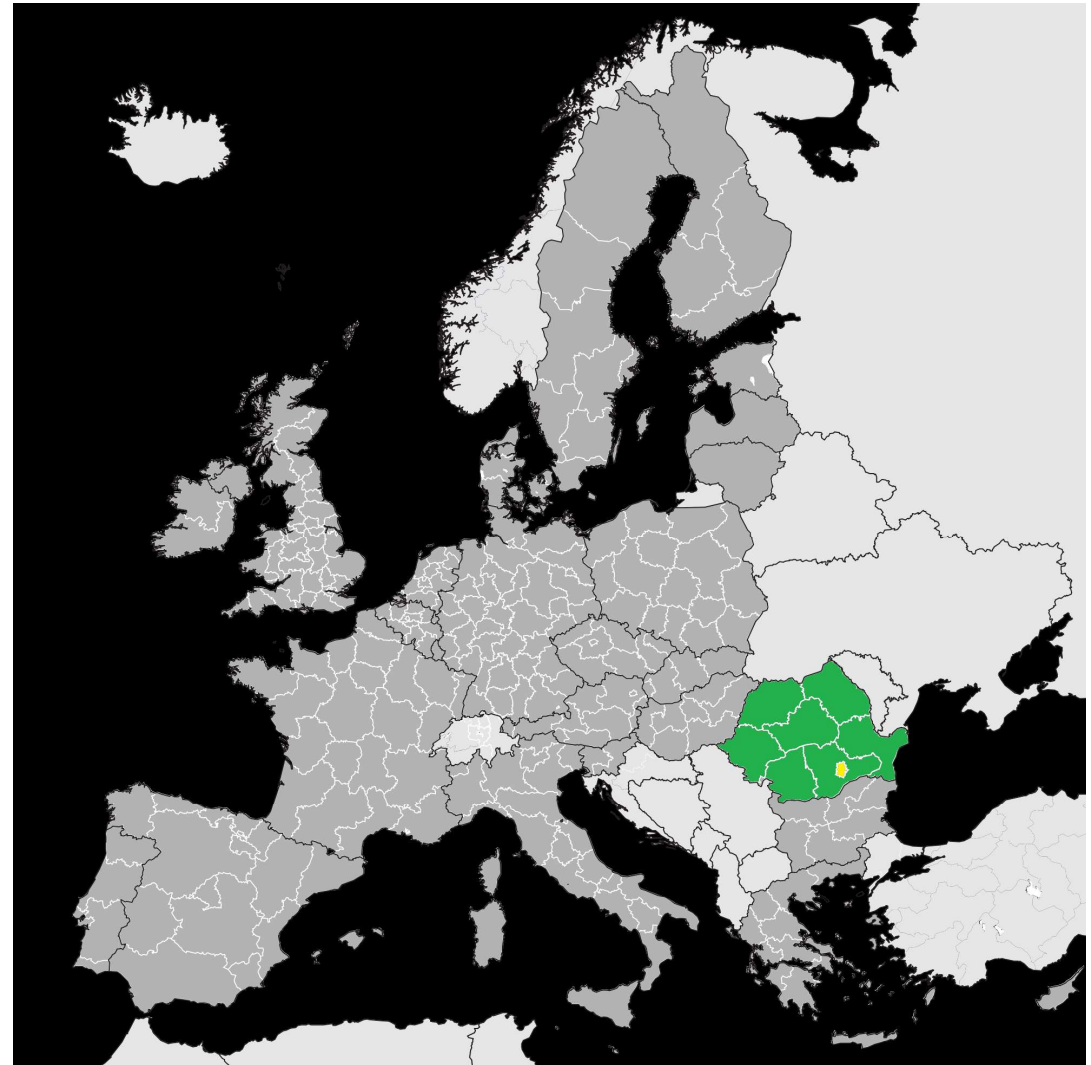


# Policy Instruments (P3 P4)



PI3: BMTA policy and strategic aims

PI4: Regional Operational Programme 2014 - 2020

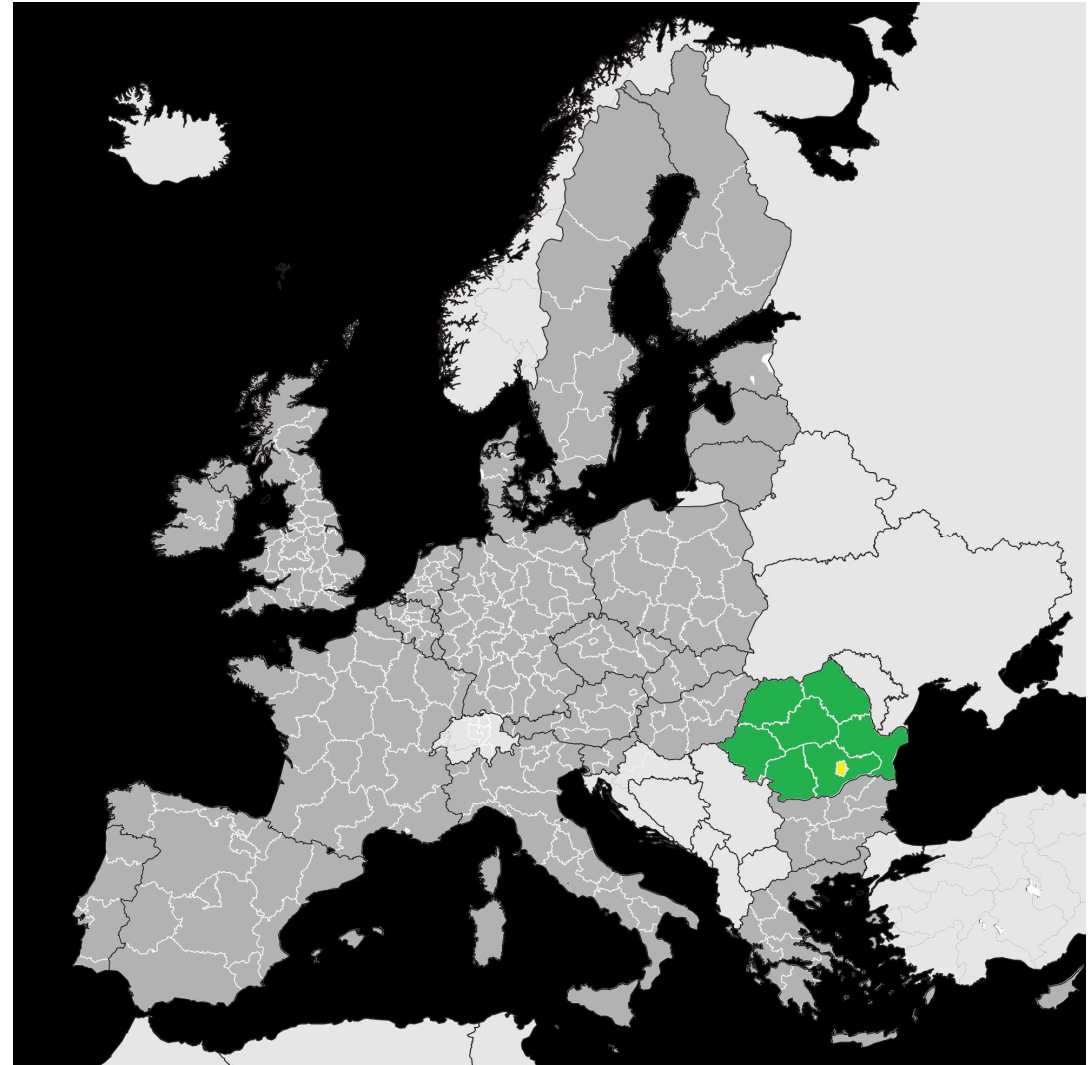


# Policy Instruments



PI3: BMTA policy and strategic aims

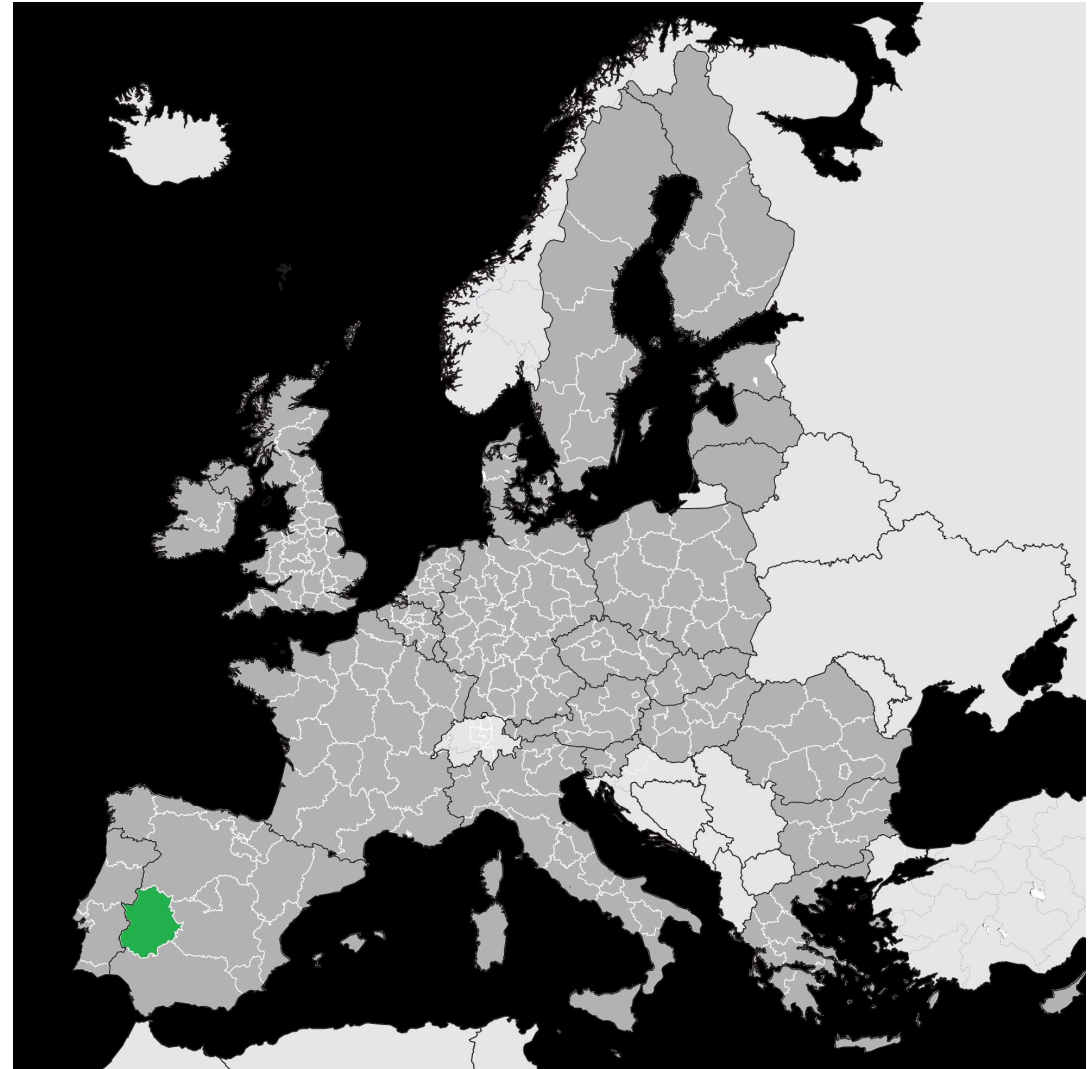
PI4: Regional Operational Programme 2014 - 2020



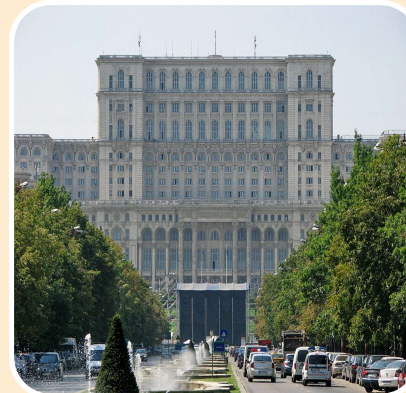
# Policy Instruments (PI5)



**PI5: Extremadura Operational  
Programme 2014 - 2020**



# CISMOB international events



**Smart cities:  
How Intelligent  
is transport?**

**Stockholm  
SEP 2016**

**Explore targeted  
policy strategies  
to support the  
use of ICT and  
e-mobility**

**Cáceres  
MAR 2017**

**Intelligent  
transport  
systems  
towards a low  
carbon mobility**

**Bucharest  
OCT 2017**

**ITS  
From science to  
policy and from  
policy to real  
world**

**Aveiro-Águeda  
MAR 2018**

## CENTRO REGION

MOBILITY CHANGES AND  
POTENTIAL SUPPORTING  
MEASURES

- **Background**
- **Suggested measures to stakeholders**
- **Group discussion**



# Background

**Population:** 2,3 M

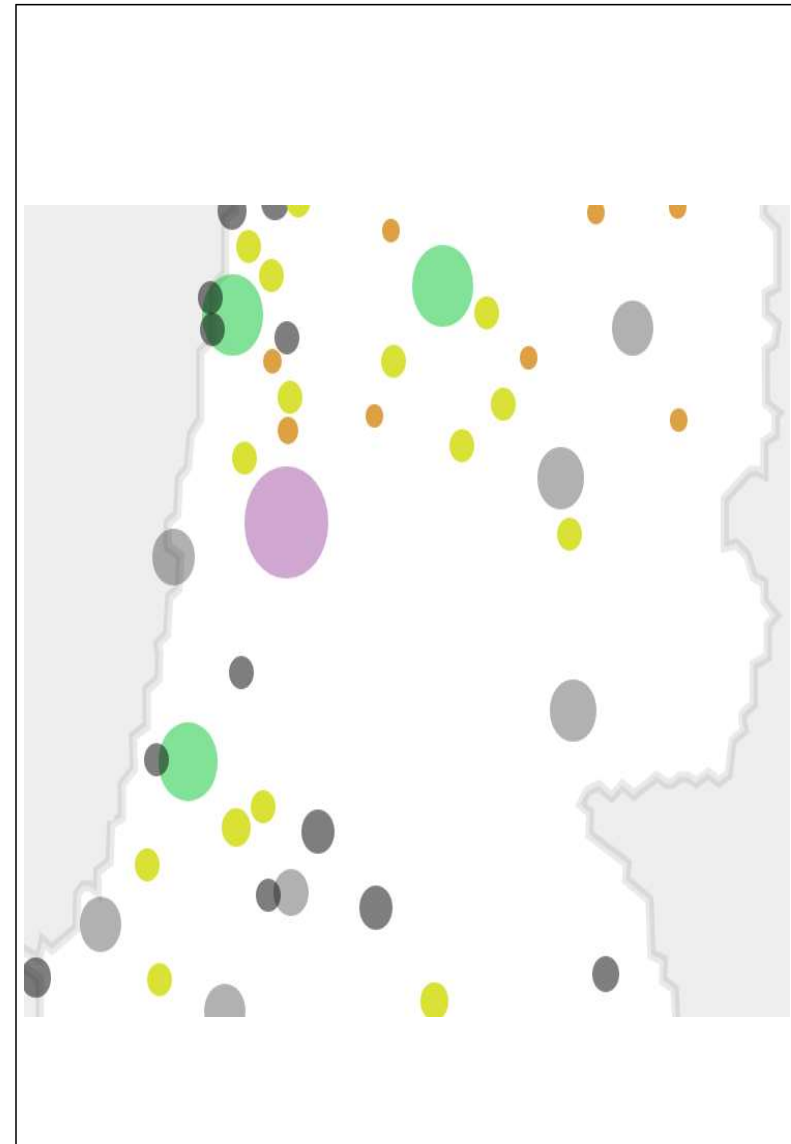
**Area:** 28 405 km<sup>2</sup> – 31% PT

**Density:** 75 inhab/km<sup>2</sup>

**SUMP NUT III**

**Polycentric urban structure**

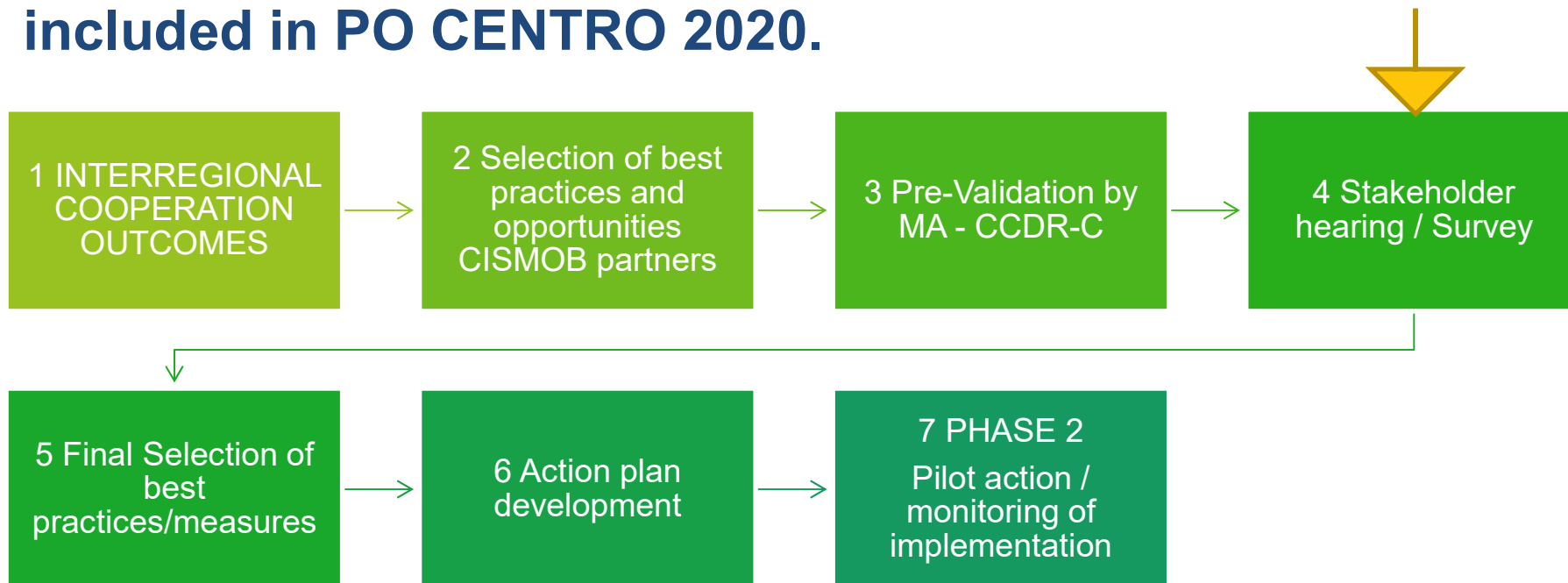
**Private car used in 70% of  
commuting trips – 62% PT**





# New potencial measures for CENTRO region action plan

**CISMOB regional process for selection new areas to be included in PO CENTRO 2020.**



# Areas for potential intervention in CENTRO REGION

## 1 – Smart and Connected Mobility

a) **Early prototypes** – integration 5G radio, transport networks, and cloud infrastructures.

b) **Crowdsourcing** – urban activity patterns, traffic demand monitoring/short-term forecast

c) **(eco) C-ITS – CAVs** – infrastructure adaptation

## 2 – Corridor management

a) **Smart Road pricing**

b) **Intelligent regional Public transport**

c) **Automatic incident detection**

## 3 – ICT - Electric / shared Mobility

## 4 – Real-Time Transit Information Systems

## 5 – Assistive Technology

# Areas for potential intervention in CENTRO REGION

## 1 – Smart and Connected Mobility

a) **Early prototypes** – integration 5G radio, transport networks, and cloud infrastructures.

b) **Crowdsourcing** – urban activity patterns, traffic demand monitoring/short-term forecast

c) (eco) **C-ITS – CAVs** – infrastructure adaptation

## 2 – Corridor management

a) Smart Road pricing

b) **Intelligent regional Public transport**

c) Automatic incident detection

## 3 – ICT - Electric / shared Mobility

## 4 – **Real-Time Transit Information Systems**

## 5 – Assistive Technology

# 2 Corridor management

## 2b Intelligent regional Public transport

Supporting the creation of intelligent and integrated **intermodal travel planning and smart/integrated ticket systems. New synergies between regional/national and local operators (win-2-win)** for both users and operators.



### Sveriges största biljettsamarbete

Resplus är ett biljett- och resesamarbete som binder ihop Sveriges kollektivtrafik med över 4 000 orter. Detta är möjligt tack vare en unik samverkan mellan så gott som alla Sveriges trafikföretag, som jobbar tillsammans för att göra resan så smidig och enkel som möjligt för resenären.

Samtrafiken laddar trafikdata och lägger upp hållplatser och linjer i databasen som är kopplad till nationell försäljning. De sträckor som därmed blir sökbara kan kombineras med varandra till resekedjor som innehåller olika trafikslag och flera operatörer. Resekedjorna blir försålda via ett nationellt bokningssystem och distribuerade av ett flertal webbsajter, av ombud och resebyråer.



# Real-Time Transit Information Systems (RTTISs)

4a New exclusive investment priority / new objectives in concession agreements focused on RTTIS.



BP (RTC) in Quebec City



# Your expertise Your ideas

How ICT can improve low carbon mobility?

## **SMART AND CONNECTED MOBILITY**

1.2 Data exists: How can we make it public, open, secure and take advantage of it for traffic management ?

1.3 How to put green mobility in top concerns of CAVs and C-ITS players agenda.

## **CORRIDORS**

2.1/2 How can we engage all players and regional operators to share data, and trust in integrated ticket systems? And innovative road pricing systems?

## **PUBLIC ROAD TRANSPORT**

4.1 Are there effective indicators of success RTTIS?





**An interregional cooperation project for improving low-carbon economy policies**

*Project Partners*

- Extremadura Energy Agency (ES)
- Municipality of Aveiro (PT)
- University of Aveiro (PT)
- Bucharest Metropolitan Transport Authority (RO)
- Intelligent Transport Systems Romania - ITS Romania (RO)
- Stockholm University (SE)



# Thank you

# jorgebandeira @ua.pt

<http://www.interregeurope.eu/cismob/>

