



CHRISTA
Interreg Europe



European Union
European Regional
Development Fund

Industrial Heritage in Thessaloniki

NIKOLAOU MILTIADIS

HEAD OF TOURISM PROMOTION DEPARTMENT

REGION OF CENTRAL MACEDONIA



14-16 March, 2017 | 2nd Inter-regional Steering Group Meeting, Boras, Sweden

CHRONOLOGY OF THE INDUSTRIAL ACTIVITY IN THESSALONIKI

1888 – 1890 The railway lines and gas facilities

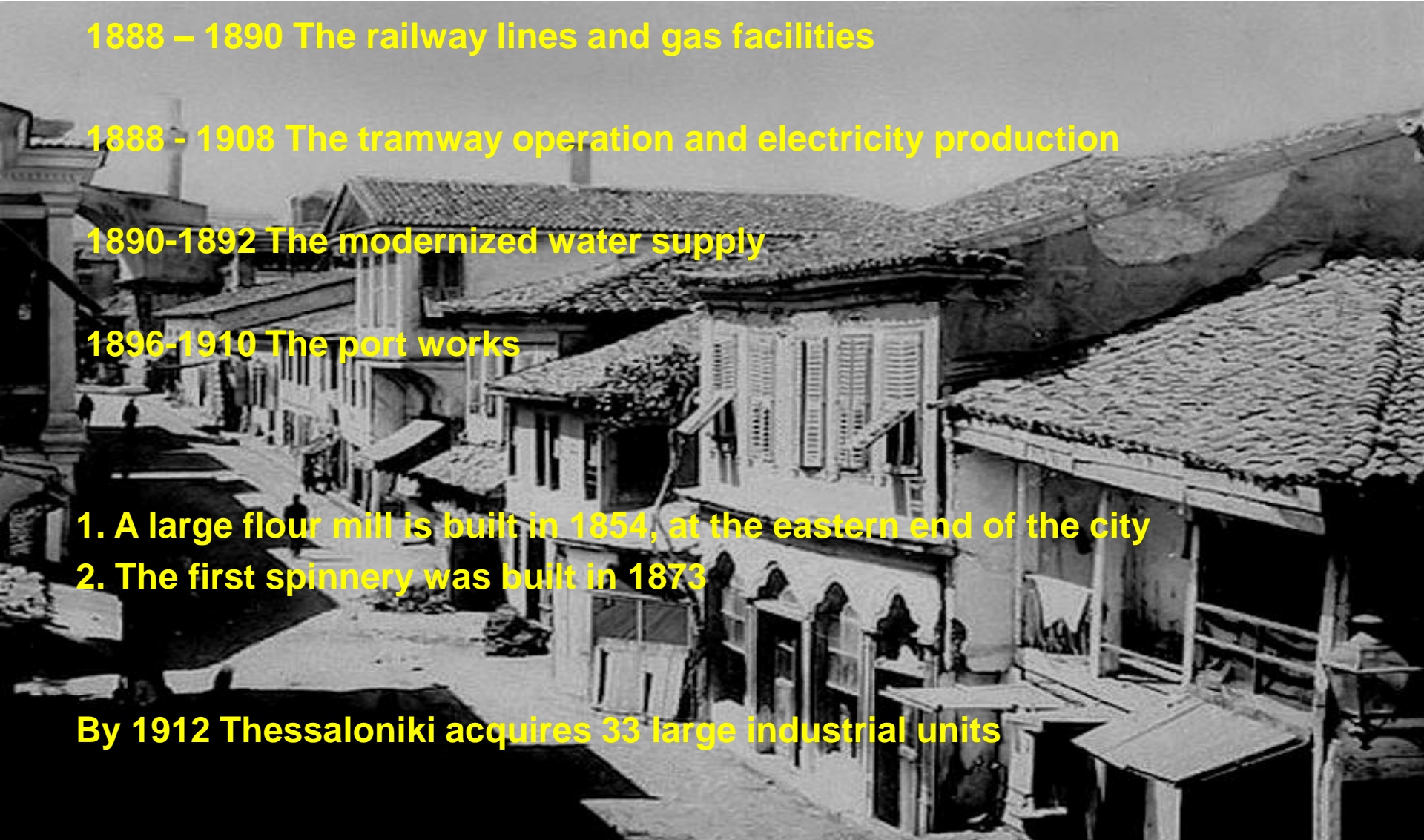
1888 - 1908 The tramway operation and electricity production

1890-1892 The modernized water supply

1896-1910 The port works

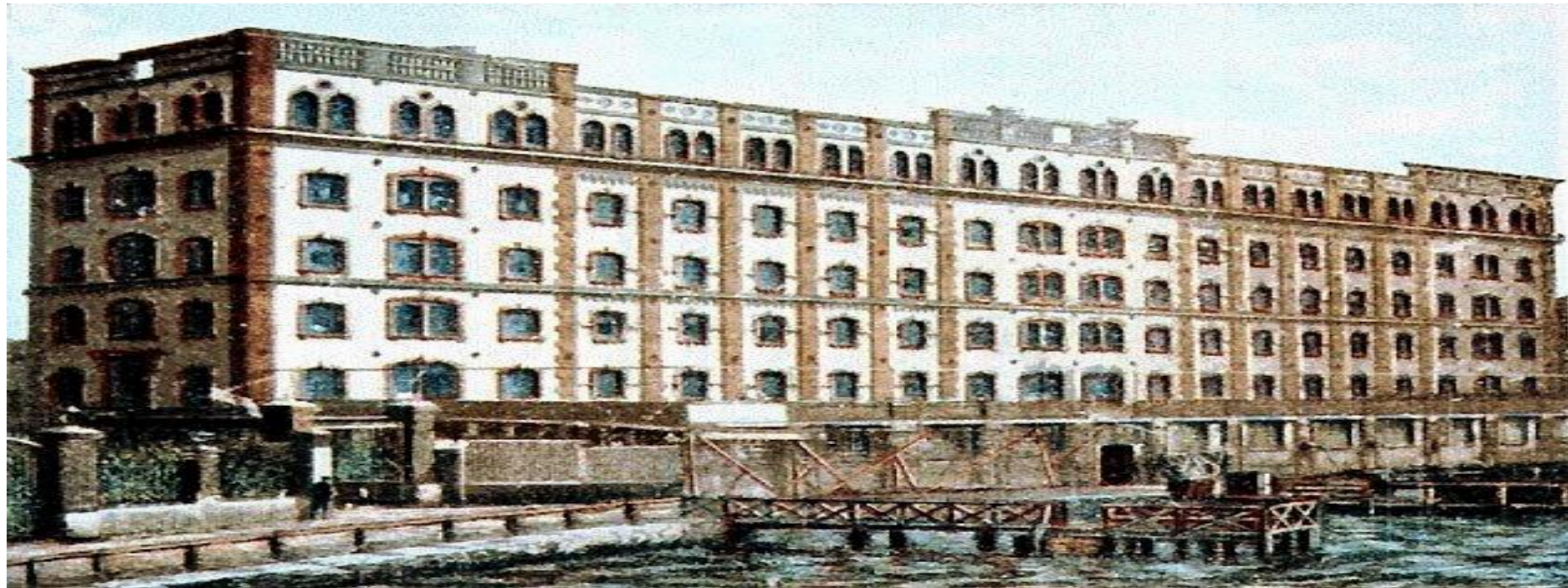
1. A large flour mill is built in 1854, at the eastern end of the city
2. The first spinnery was built in 1873

By 1912 Thessaloniki acquires 33 large industrial units



INSTITUTIONS IN THE DEVELOPMENT OF INDUSTRY OF THESSALONIKI

1. Macedonian Federation of Industry
2. Thessaloniki Chamber of Commerce and Industry
3. Chamber of Tradesman and Small & Medium Industries
4. Establishment of the free zone at the port and international trade fair
5. Creation of the Industrial Area of Thessaloniki in Sindos



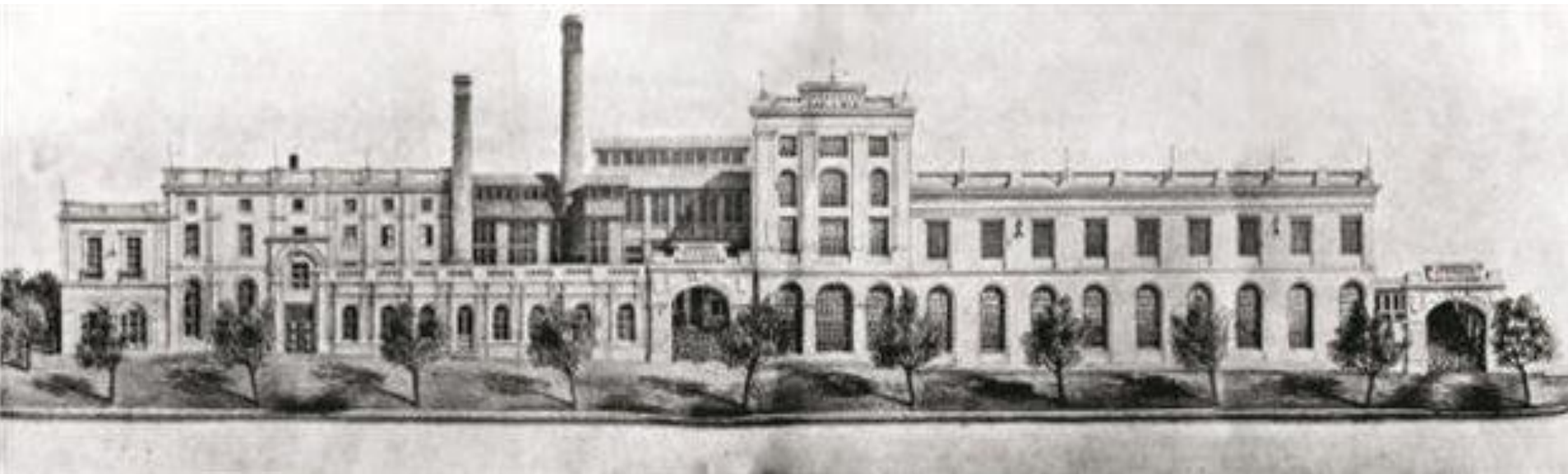
INFRASTRUCTURE NETWORKS

1. Railways
2. Gas Facilities (1888 – 1890)
3. Tramways and electricity production (1888-1908)
4. Water (1890-1892)
5. Port of Thessaloniki (1896-1910)
6. Telecommunications



INDUSTRIAL SECTORS AND MAIN INDUSTRIAL UNITS

1. First industrial zone
2. Mill companies
3. Brewery / ice factories
4. Ottoman tobacco company
5. Pasta factories
6. Tanneries
7. Textile companies



INDUSTRIAL SECTORS AND MAIN INDUSTRIAL UNITS

In 1912, 35 industrial units classified in 8 main branches:
Food (8), textile (9), building materials (2), machinery (6), leather (2),
paper and printing (2) and chemical (3), tobacco units (5).

In 1922 the number of factories exceeds 100
Before Second World War the original number has increased
Substantially and Thessaloniki has 428 units.

Textile industry

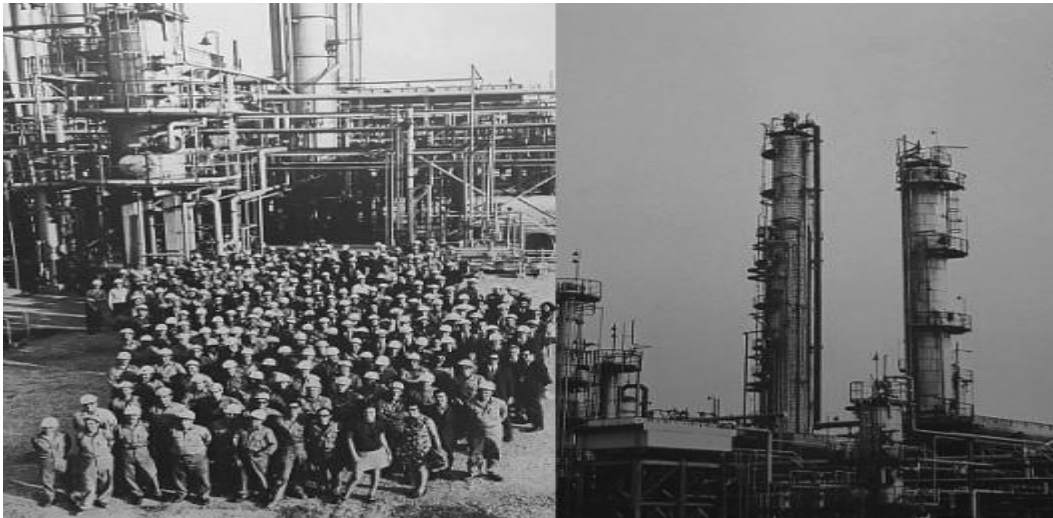
In the 30's the textile industry was
the most important industry sector
50 units employed up to 2000 workers



INDUSTRIAL SECTORS AND MAIN INDUSTRIAL UNITS

Period 1960-1990

- Construction of a number of private and state industrial units



EQUIPMENT

The first steam factory in the city was the Allatini mill.

In the 20s - dominance of diesel engines

In 1930, 15 industries use steam, 35 oil and 28 gasoline engines



REUSE OF INDUSTRIAL BUILDINGS

1. Ottoman Bank - State Conservatory of Thessaloniki
2. Thessaloniki Telecommunications – Bristol Hotel
3. Railway – Old Train Station
4. Central Pumping Center of Thessaloniki – Water Museum
5. Fix Brewing – Leisure time
6. Mill – MYLOS Leisure Multiplex
7. Vilka Weaving – Vilka Leisure Multiplex





European Union
European Regional
Development Fund

Thank you!



Questions welcome



CHRISTA Project