

# RIS3 of Lubelskie Voivodeship

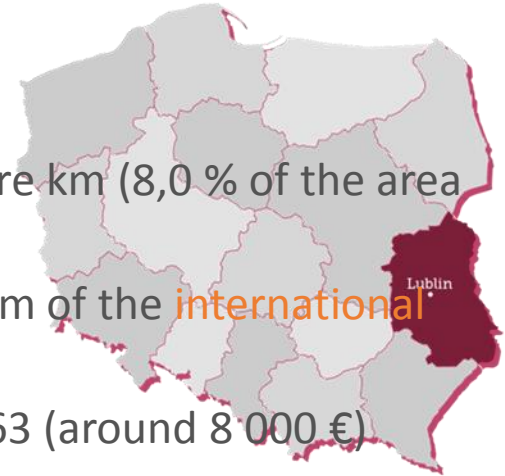
## REGIONAL INNOVATION STRATEGY FOR THE LUBELSKIE VOIVODESHIP 2020

Work Package 4

Lublin, 14 November 2017

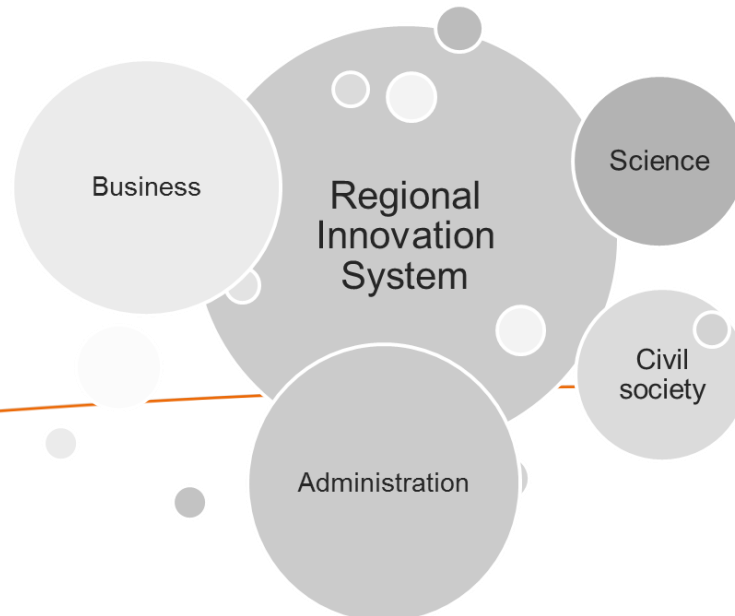
## Lubelskie - facts & figures:

- the **third largest region** in Poland - 25 122 square km (8,0 % of the area of Poland)
- neighbouring with **Belarus** and **Ukraine** - 445 km of the **international borders**
- Estimated **GNP** per inhabitant equals PLN 32 063 (around 8 000 €)
- **Average gross salary** in private sector PLN 3 815 (around 950 €)
- **Unemployment rate** equals 9%
- **Number** of private enterprises: nearly 167 000
- **19 institutions of higher education** with over 75 000 students (6% students in Poland)
- **97 R&D** entities



# Short description of RIS3 process

- **2012-2014** - Selecting smart specialization areas was a 2-stage process:
  - 1) identification of endogenous development potentials,
  - 2) identification of the areas of smart specialisation of the region,based on the *entrepreneurial discovery process* (approx. 220 stakeholders involved)
- **May 2013** - S3 Peer-review in Vasa (FI)
- **31 October 2014** – RIS LV adopted by the Regional Parliament



# Building the evidence base for RIS3

## Strengths:

- concentration of economic potential of the region and scientific, technological and educational potential in the following sectors: **bioeconomy, medicine&health, IT& automation and low-emission energy industry**
- recently expanded **R&D infrastructure** supporting technology transfer and better laboratory equipment in research institutions
- **strong research groups** working in several centres, highly rated on the national level and in the European Union in the areas of industrial biotechnology
- growing **awareness and openness of public administration bodies** to provide new solutions and innovation policy instruments

## Opportunities

- **inflow of structural funds** allocated for targeted development goals
- good prospects for further **increase of the voivodeship transport availability** as a result of the termination of investments made in the 2007-2013 financial perspective and taking new ones in the years 2014-2020
- **incorporating the region into the network of scientific cooperation**

## Weaknesses:

- low level of innovation of enterprises, low propensity to innovation and low and decreasing spending on innovative activities
- relatively low propensity to cooperation between entrepreneurs and between business and research institutions in the voivodeship as well as nation- and worldwide

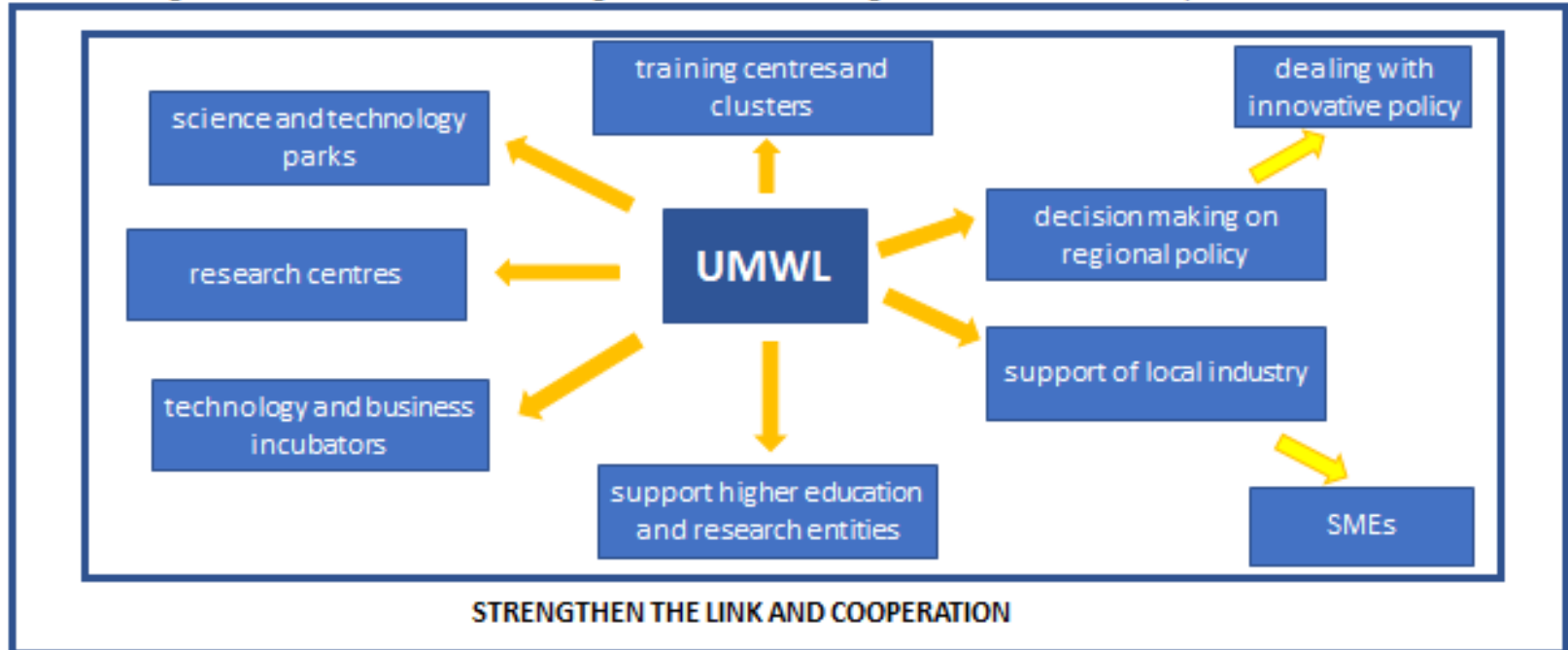
## Threats

- unfavourable demographic trends and worsening migration processes, especially among young and educated people
- continuing image of the voivodeship as a peripheral region, deepening the development gap and deteriorating investment attractiveness of the region causing difficulty in the inflow of new capital and technologies
- inconsistent and unstable legal system, including financing the science sector and cooperation between science and economy
- excessive fiscal policy
- unnecessary concentration of state policy on short-term economic calculation discouraging local authorities from high spending on innovative activities with long-term return on investment
- globalization as an element limiting competitiveness of the region's economy, particularly in the area of agriculture and agri-food processing

# Building the evidence base for RIS3



UMWL is a public administration body – key institution in the regional innovation system, strategic planning processes and financial administering. The overall mission of UMWL is acting for the benefit of the region and its economic development.



# Main objectives of RIS3

- developing **territorial capital**, especially in the areas of smart specialisation,
- strengthening the regional research and **innovation system** to be based on the **quadruple helix** that joins together all stakeholders interested in the cooperation,
- incorporating the region into the national as well as **international chain of innovation and cooperation network**,
- developing **effective instruments to support innovation** and competitiveness of the voivodeship economy,
- stimulating **dynamic advantages** of the location, especially in the form of: (1) strengthening business environment institutions, (2) developing market services for business and (3) developing financial markets significant to the increase in demand for innovation from all companies, both these located in regional and supra-regional smart specialisation areas and these operating outside of these areas.

# Smart specialisations of RIS3

## BIOECONOMY

**key specialisation**

Examples of technologies supporting the areas of innovation development:  
The main value chains:  
Key sectors of the economy:

Agricultural and industrial biotechnology, nanotechnology, biophysics

**Sustainable primary production ▶ Bio-resources processing ▶ Food production**

Pharmaceutical ▶ Energy ▶ Eco-business ▶ Agro-food processing ▶ Chemical ▶ Paper ▶ Wood and furniture  
Information services ▶ Research and development related to particular specialisation

## MEDICINE AND HEALTH

**complementary specialisation**

Examples of technologies supporting the areas of innovation development:  
The main value chains:  
Key sectors of the economy:

Biotechnology and medical nanotechnology, personalized pharmacotherapy, advanced materials

**Diagnostics ▶ Therapy ▶ Rehabilitation ▶ Preventive care**

Nutrition and dietetics ▶ Medical and health-oriented services ▶ Research and development related to particular specialisation

## LOW CARBON EMISSION ENERGY

**emerging specialisation**

Examples of technologies supporting the areas of innovation development:  
The main value chains:  
Key sectors of the economy:

Bio-energy, photonics, clean fossil technologies, prosumer energy, smart energy systems, renewable energy sources

**Acquisition of energy resources ▶ Energy production and storage ▶ Energy distribution and sale**

Mining ▶ Mining support services ▶ Production and supply of energy ▶ Research and development related to particular specialisation

## IT AND AUTOMATION

**supporting specialisation**

Examples of technologies supporting the areas of innovation development:  
The main value chains:  
Key sectors of the economy:

Mechatronics, smart buildings, control systems, industrial automation, mobile applications

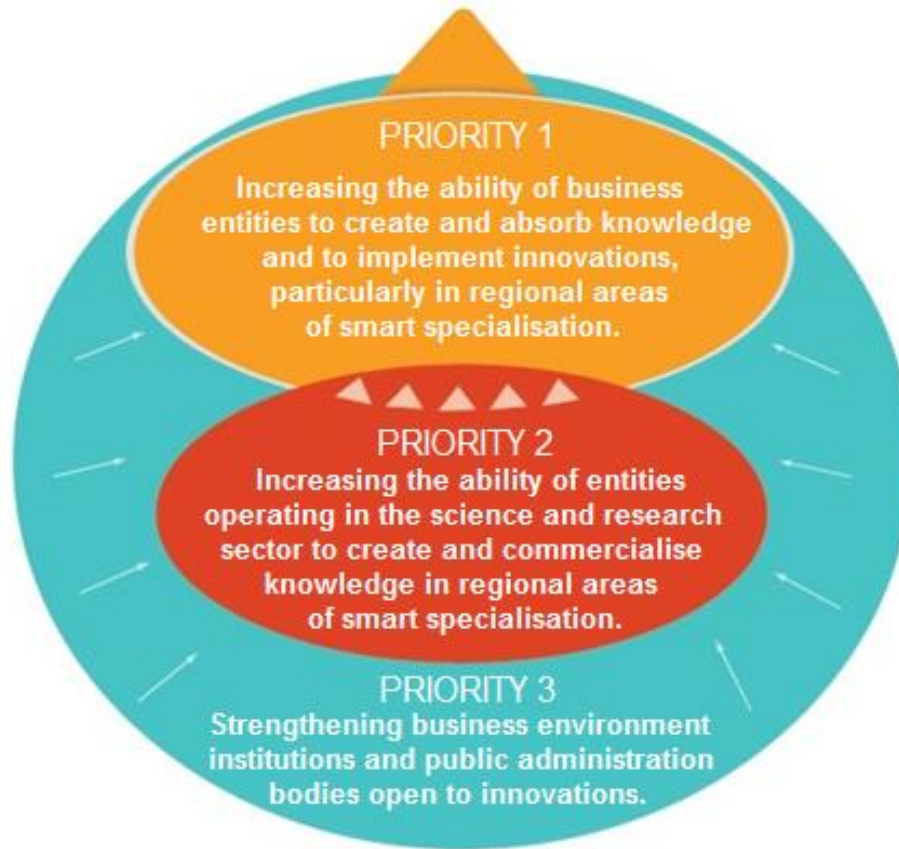
**Manufacturing ▶ Advanced products and production systems ▶ Systems engineering**

Software and IT consultancy ▶ Research and development related to particular specialisation ▶ Information services  
Manufacture of electrical equipment, machines, devices, computers, electronic and optical products

CUSTOMERS

# Priorities

REGIONAL INNOVATION SYSTEM



**Measure 1.1:** stimulation of entrepreneurship development, especially technology entrepreneurship.

**Measure 1.2:** increase in the level of innovation of already operating companies.

**Measure 1.3:** knowledge and skill development of industrial personnel (employees and managers).

**Measure 1.4:** stimulation and development of network cooperation between business entities.

**Measure 1.5:** development of financial engineering for innovation.

**Measure 2.1:** increase in the ability of R&D personnel to create and transfer knowledge for the development of smart specialisation of the region.

**Measure 2.2:** increase in effectiveness of the use of R&D infrastructure to conduct and commercialise research in the fields connected with intelligent specialisation of the region.

**Measure 2.3:** growing importance of Lublin science sector in the areas of smart specialisation at the national and international level.

**Measure 3.1:** transformation of business environment institutions into regional growth centres.

**Measure 3.2:** development of efficient and open to innovation public administration bodies.

**Measure 3.3:** promotion of entrepreneurship and innovation.

# Implementation and budget

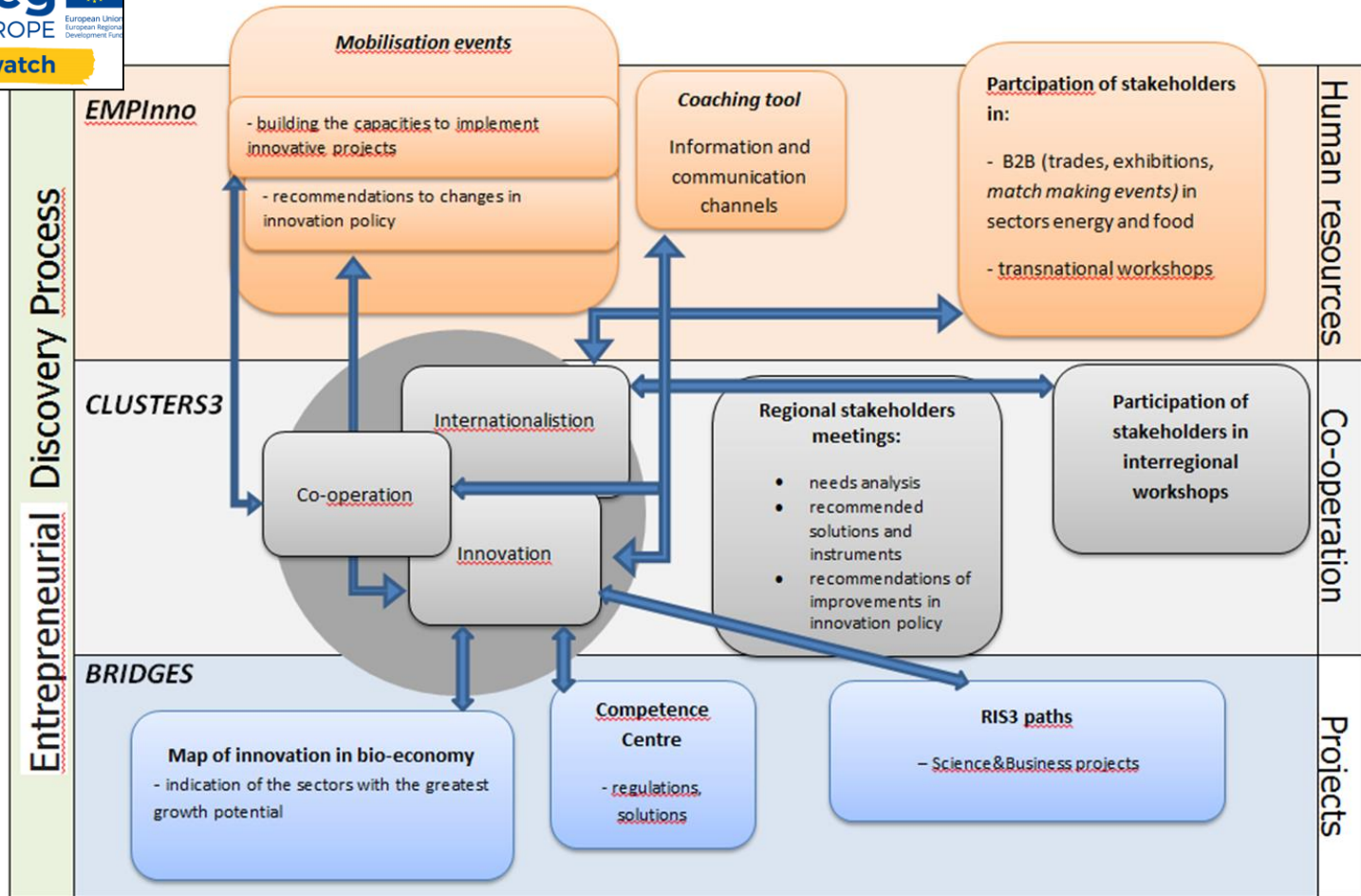
## Institutional system:

- the Board of the Region
- the Council for Innovation - representatives of economic and scientific circles, public administration and civil society as well as financial markets
- the RIS LV 2020 Managing Authority – Department of Economy and Foreign Co-operation in the Marshal Office of Lubelskie Voivodeship

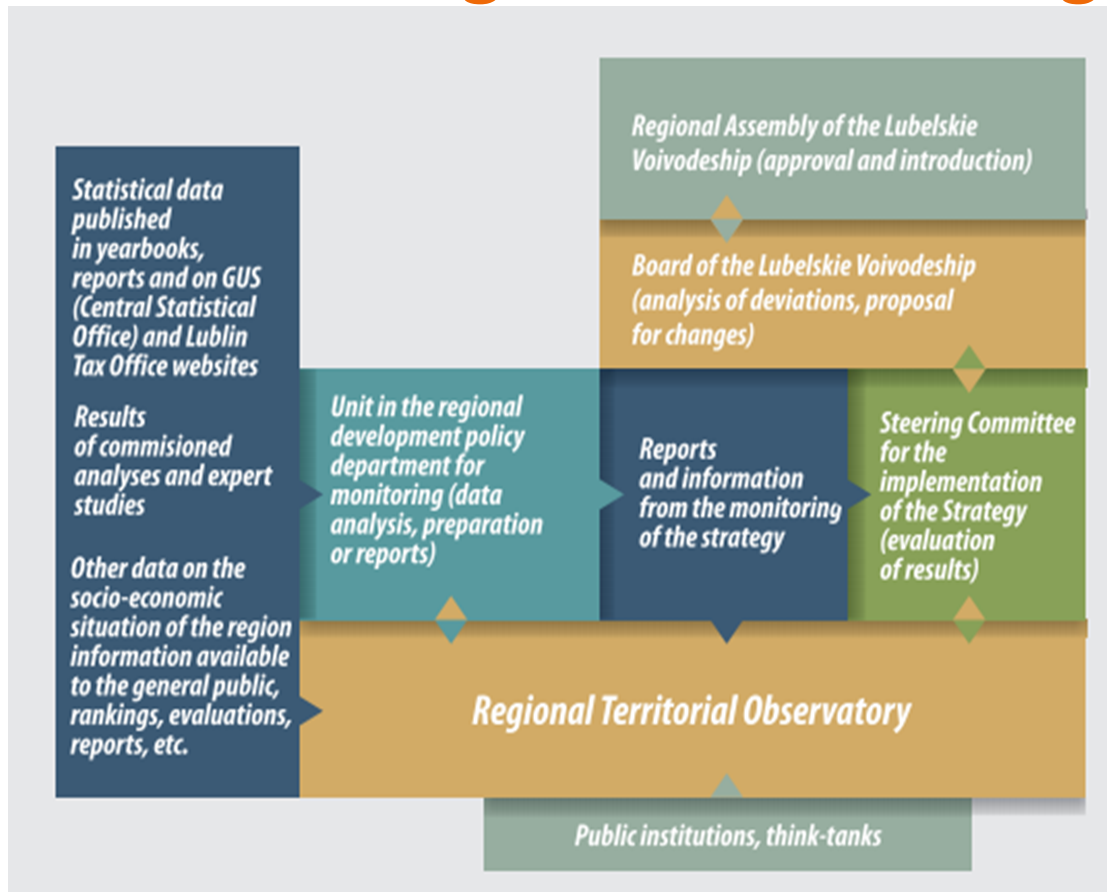
## Financial system:

- the *Regional Operational Programme of the Lubelskie Voivodeship for the years 2014 - 2020 (the ROP LV 2020:*
  - **Priority Axis 1: Research&Innovation – 100 mln € of ERDF**
  - **Priority Axis 3: Competitiveness of enterprises – 291 mln € of ERDF**
- Operational Programmes (OPs): *Operational Programme Development of Eastern Poland, Operational Programme Intelligent Development, Operational Programme Knowledge, Education, Development, Operational Programme Infrastructure and Environment, Operational Programme Digital Poland, Operational Programme Fishing and Sea,*
- *Rural Development Programme 2014-2020*

# International co-operation for RIS3 implementation



# Measuring and monitoring progress



## Regional Territorial Observatory (ROT) -

is a research and analytical base providing information for policy development in the region.

### Competence:

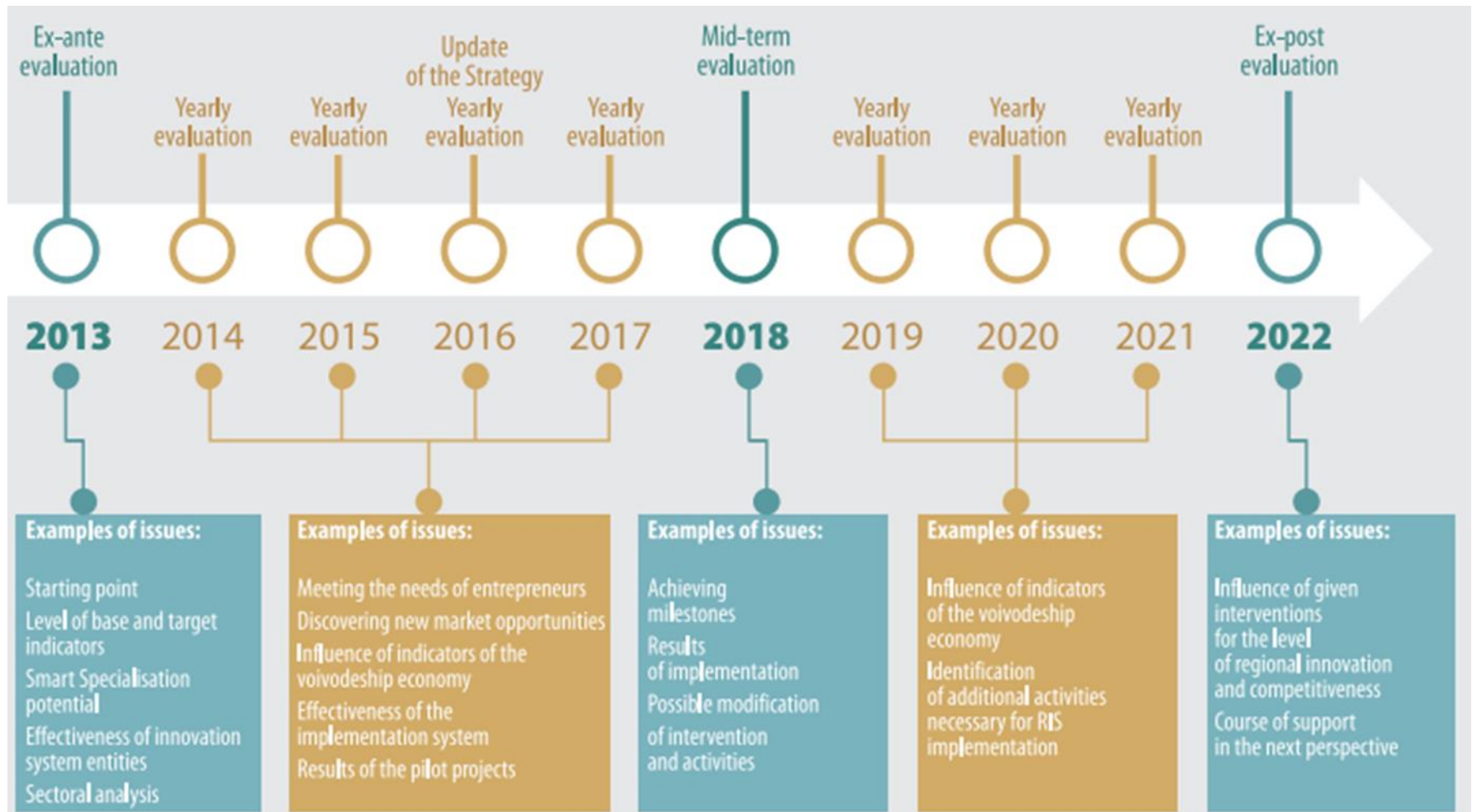
- monitoring the effects of the implementation of the voivodeship development strategy
- collecting research results and analyses conducted by other entities
- organizing and sharing knowledge about the region
- conducting research and own analyses in accordance with the needs of the voivodeship self-government

One of the objectives of ROT is to develop and deepen cooperation with a wide range of stakeholders including:

- public institutions
- institutions of public statistics
- research institutions
- higher education institutions
- private companies dealing with social research, economic issues, public policy evaluation or business advice.

ROT operates in the structures of the Marshal Office of the Lubelskie Voivodeship in the Department of Regional Policy.

# Measuring and monitoring progress



# Summary and next steps

- **Implementation:** different activities helping business and academia to strengthen cooperation
  - working groups
  - thematic calls for proposals within ROP LV (photonics)
  - cluster policy
  - networking events
  
- **Monitoring:** further development of the RIS3 LV monitoring system
  - evaluation of list of indicators
  - building regional branch observatories network
  - improvement of a set of monitoring and benchmarking tools, available to all RIS3 stakeholders and intelligent markets' actors.

Results of EMPinno and Smart\_watch projects will coincide with mid-term evaluation of RIS3.



Lubelskie



EUROPEAN UNION

EUROPEAN  
REGIONAL  
DEVELOPMENT  
FUND

EmplInno

Dorota Skwarek  
Deputy Director

Department of Economy and Foreign Cooperation  
Marshal Office of Lubelskie Voivodeship  
+48 81537 16 51  
[dorota.skwarek@lubelskie.pl](mailto:dorota.skwarek@lubelskie.pl)