





Stateforestry agency The Netherlands



Contents side-channel Hurwenen

- Policy assignments along the river Waal
- What does this mean?
- Floodplain Hurwenen
- Process approach Hurwenen
- How did we integrate tasks?
- Concrete results Hurwenen
- Advantages of integrated area-oriented approach
- Lessons learned



Policy assignments along the river Waal

- Nadere Uitwerking Rivieren Gebied (NURG)
- Natura 2000/Gelders Natuur Netwerk (GNN)
- Ruimte voor de rivier
- Kader Richtlijn water (KRW)
- Waalweelde



What does this mean?

- Policy assignments demand a coherent approach
- Integral planning and implementation
- Translation of policy assignments to integral projects



Floodplain Hurwenen: localisation



2 Floodplain Hurwenen:
NURG – KRW- Waalweelde



Floodplain Hurwenen: localisation sub-areas



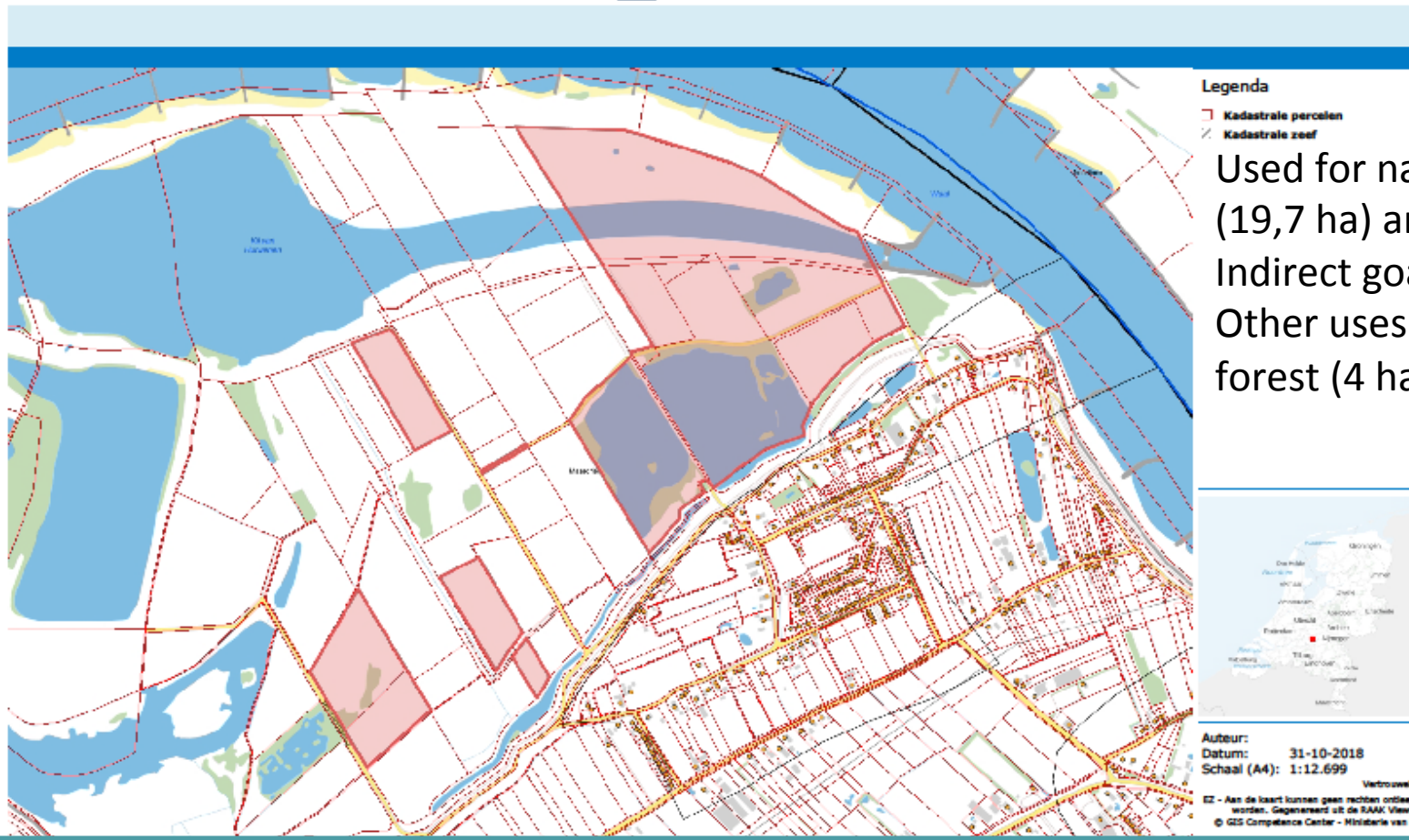
Floodplain Hurwenen: assignment and planning (1)

NURG assignment: development of 440 ha rivernature

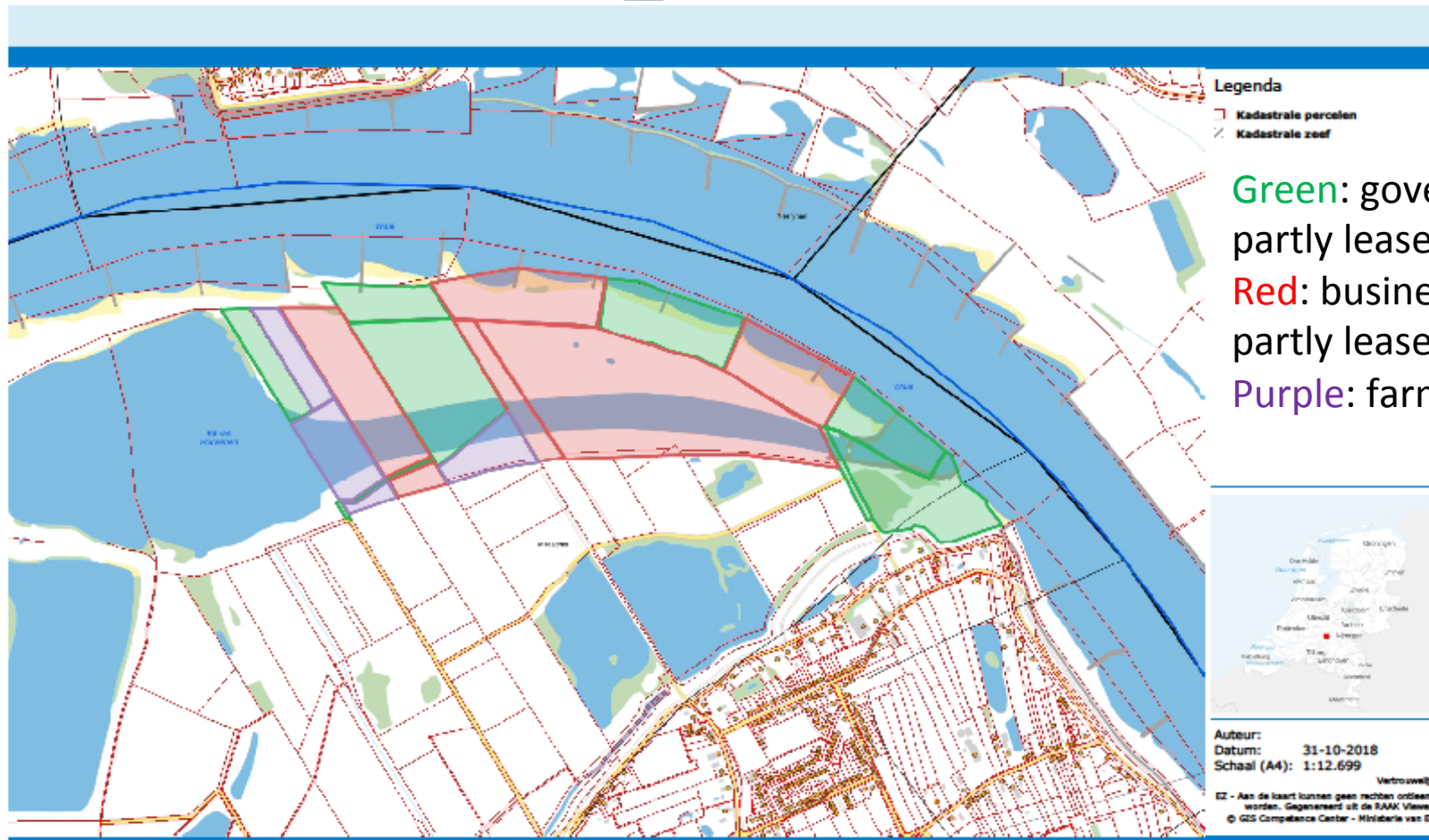
- 2000: start process
- 2002/2003: planningprocess supported by Interreg
- 2006: preferred variant with side-channel from a nature's perspective (and not from a normative highwater perspective like 'room for the river')
- Early 2008: no budget for implementation
- Late 2008: chances for cofinancement KRW
- 2009/2010: possibility for a major buy-out (69 ha) which was a prerequisite for the further lot exchange since there was no possibility of expropriation in this nature development project (as opposed to f.e. room for the river projects)



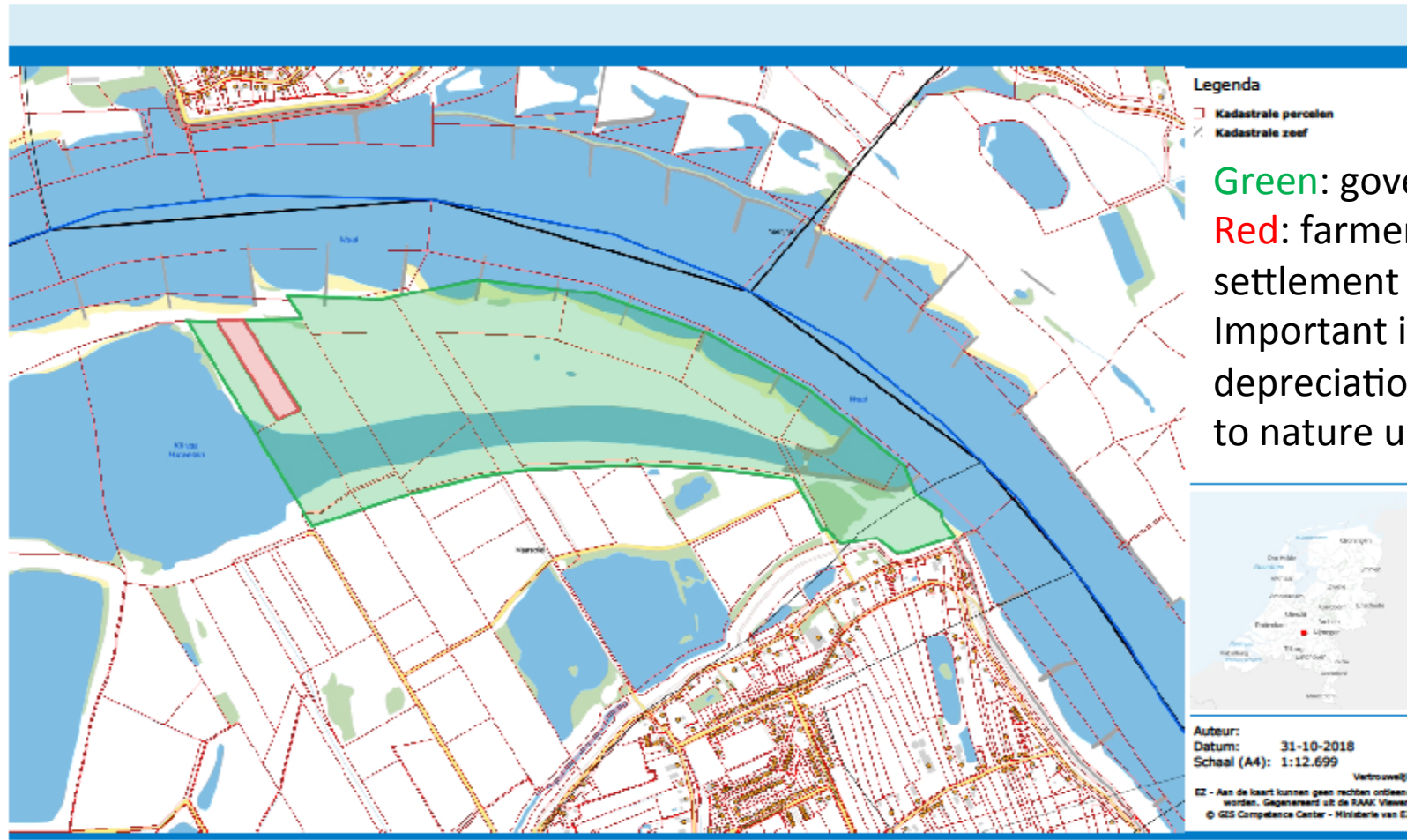
Possibility of a major buy-out (69 ha)



Ownership situation 2011



Ownership situation 2016



Floodplain Hurwenen: planning (2)

- 2010: start plan development
- 2011: resistance against side-channel mainly caused by the lack of normative highwater perspective.
- 2012: integral approach channel and rest of the area. Conditions of the deal: a) only side-channel if the watermanagement in the whole area is tackled, meaning a watershed between area 2 (nature) and area 3 (agriculture) b) land-use of area 3 remains agriculture c) municipality sells the property located in the designed side-channel
- 2012: start implementation
- 2015: delivery of results



How did we integrate tasks?

- Visibility in the project area
- Look up parties involved → interests on the table!
- Inventory of chances for links of interests
- Appreciate all interests, rolls and tasks
- Confirm all appointments
- Monitor progress
- Celebrate milestones!!!



Confirm all appointments



All parties sign the agreement together



Celabrate milestones

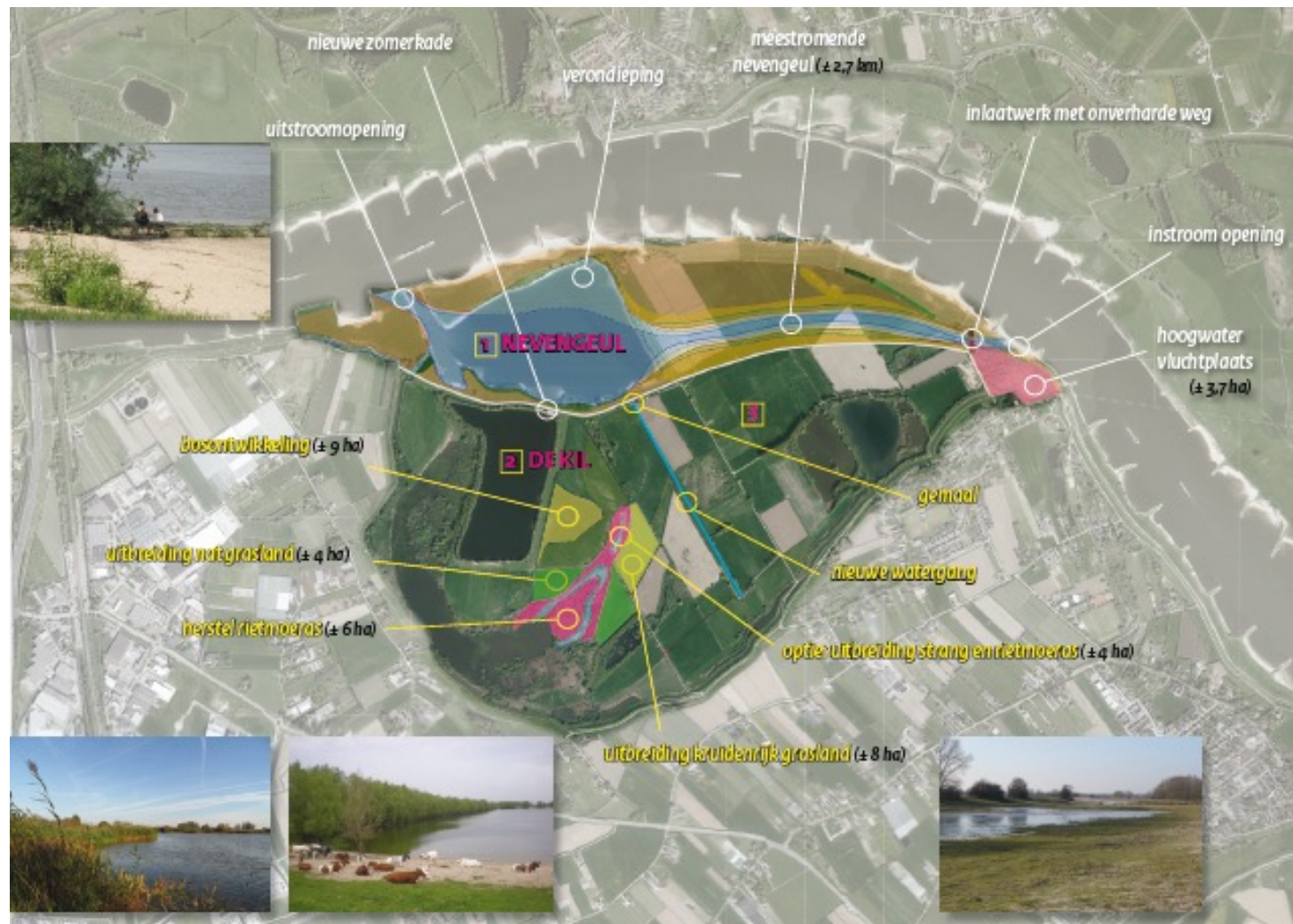
Starting implementation together with partners



and together with the surroundings



Concrete results Hurwenen



Concrete results Hurwenen

- NURG: 150 ha of rivernature
- KRW: 2,7 km side-channel and improved ecological waterquality
- WaalWeelde: improved spatial quality and quality of nature
- POP: Waterlevel balance fit for future use (agriculture/nature)
- Natura 2000: quality of existing nature improved



Construction of side-channel Hurwenen in progress



Advantages of integrated area-approach

- Possibility to link different policy assignment and budgets
- More social value for less money
- Communication with one integrated plan
- Implementation good at once!
- Costs- and riskmanagement in one hand
- Realisation within time and budget
- Everybody satisfied !!??



Lessons learned

- Make sure all interests and ambitions are known
- Cooperation does not happen automatically
- Use each other's strengths, knowledge and expertise
- One lead with driven staff to stimulate the process
- Key-players who stick to their commitments
- Consequences of total deal means 'give' (area 3 stays agricultural) and 'take' (side-channel and improvement of nature quality in area 2)
- Good communication with the surrounding environment is essential
- A bit of luck is sometimes needed (e.g. land acquisition)
- Leading to ...more job satisfaction which is also needed



Before implementation



During implementation



After implementation



And finally: be ready for complications: modelling and practice may differ



First repair attempt September 2017



Second repair attempt October 2017



Difference in waterlevel in 2018



A close-up photograph of a red squirrel standing on a mossy surface, looking down at its reflection in a small pool of water. The squirrel's fur is a vibrant reddish-brown, and its eyes are dark and focused. The background is a soft-focus forest floor with green moss and fallen leaves.

Thank you for your attention

Any questions?

