

“SWARE project helps to move towards a better balance between protection and sustainable use of natural resources and cultural heritage. As rapid economic development of inland waterway regions continue, the need to maintain that balance increases. We believe, that the key is in a combination of both economic development and heritage protection. Experiences from several, yet in many ways similar regions across Europe, helps to reach that ideal combination.”

Manita Koop, Project Manager,
Association Regio Water

Project Manager Manita Koop
e-mail: dir@randstadwaterbaan.nl,
phone: +31158200200

Website: www.interregeurope.eu/sware

Follow SWARE news in our website
and social media accounts!

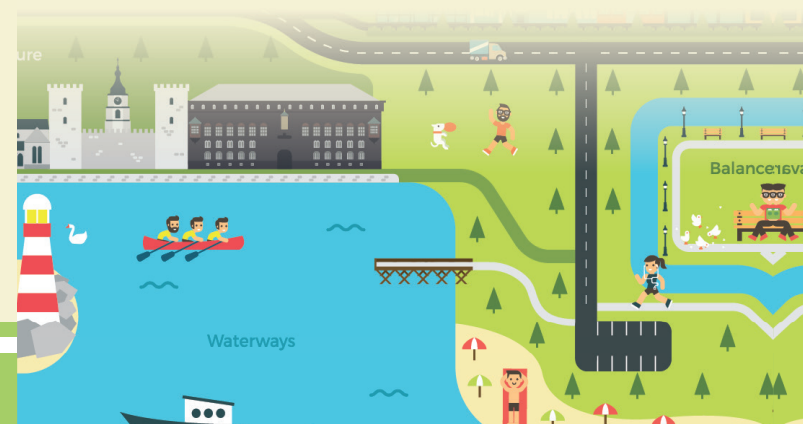


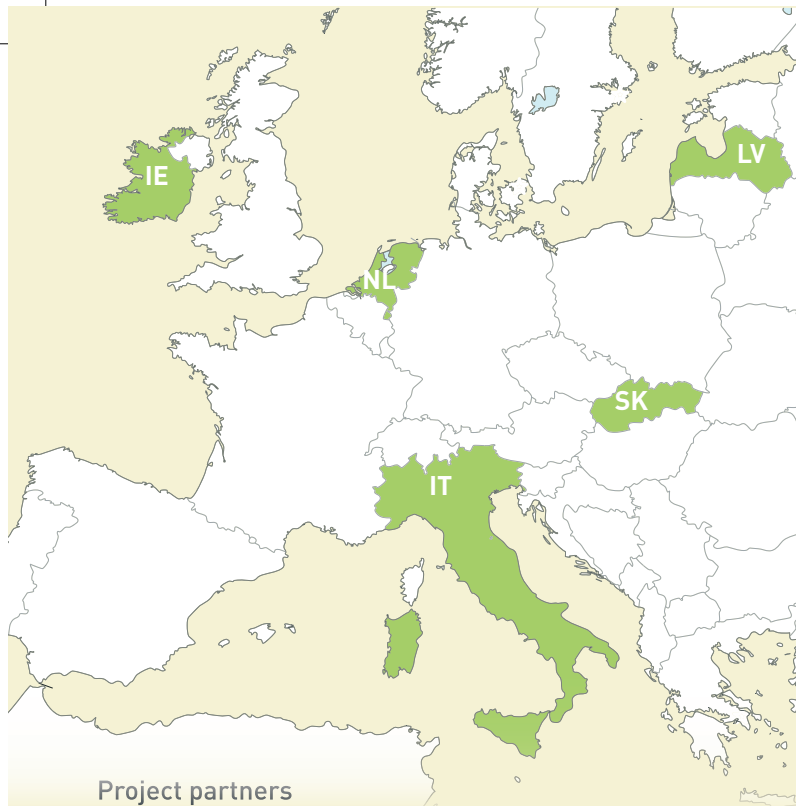
European Union
European Regional
Development Fund

SUSTAINABLE HERITAGE MANAGEMENT OF WATERWAY REGIONS



European Union
European Regional
Development Fund





Project partners



Association Regio Water
(Lead Partner, NL)



Comhairle Contae Thiobraid Árann
Tipperary County Council

Tipperary County Council (IE)



Città
metropolitana
di Milano

Metropolitan City of Milan (IT)



pons danubii

Pons Danubii European Grouping
of Territorial Cooperation (SK)



Vidzeme Planning Region (LV)



provincie
ZUID
HOLLAND

Province of Zuid-Holland (NL)



What is SWARE?

A project in the Interreg Europe 2014-2020 programme, which improves synergy between culture and nature heritage protection and sustainable development in inland waterway regions.

The growing number of visitors to inland waterway regions causes tensions with heritage conservation.

The main objective of the SWARE project is to foster integrated management of natural and cultural heritage within inland waterway regions by improving the partner regions' related policy instruments in order to create a better balance between the protection and sustainable exploitation of the natural resources and the built heritage sites.

What will we do?

SWARE activities

- Analysis of situation in each partner region
- Good practice and knowledge transfer
- Development of Action plans to improve respective policy instruments

2016

2018

2020

What will we achieve?

SWARE results

- Better balance between the protection and sustainable exploitation of the natural resources and the built heritage sites
- More effective, integrated regional heritage management
- Stimulated stakeholder commitment related to sustainable heritage valorisation
- Increased engagement of inhabitants towards protecting and promoting the environmental/cultural values of their localities

- Implementation and monitoring of Action plans