

FLEXIBLE TRANSPORT SYSTEMS TECHNICAL STATE OF THE ART Košice region, Slovakia

Regional state-of-the-art analysis

The Košice region is situated in the South-eastern part of Slovakia. It is the fourth largest region within Slovakia as for its area (6.754 km²) and the second by the density of the inhabitants (117 inhabitants/km²). The Košice region has 440 municipalities from which 17 have the status of cities.

In relation to regional sustainable transport situation:

- The companies' eurobus, a.s. and ARRIVA Michalovce, a.s. provide bus public service within regular bus services. Through these transport companies the transport services of the entire region is ensured by suburban regular bus services.
- The crucial railway track is the double-track electrified line Košice – Bratislava.
- There is a network of marked cyclotouristic routes in total length of around 1.555 km. The existing cycling trails, however, do not fulfil the requirements of the efficient and safe traffic in the territory.



Picture: Transport network in Košice region

Flexible transport systems in Košice region

There are only following categories of flexible modes of transport in the territory of the Košice region and Slovak Paradise / Slovenský raj as a touristic „hotspot“:

- 1) Shuttle seasonal/temporary (operates only seasonally or at specific occasions) with fixed route and stops, mostly small distances:
 - seasonal – seasonal summer and winter buses
 - events – event trains.
- 2) Sharing
 - bikerental.
- 1) Both types of seasonal buses (summer and winter buses) are designed for the tourists and visitors of the Spiš region and the adjacent destination Slovenský raj. The initiator for introduction of these buses was the Regional Organization of Tourism Slovenský raj & Spiš and the offer was prepared in close cooperation with the bus

Region	KOŠICE REGION, SLOVAKIA
Area (km ²)	6.754
Inhabitants	797.759
Regional transport network	<ul style="list-style-type: none"> • European road routes: E50, E71 and E58. The length of the road network across region is 2.382 km • Košice is the second largest railway node in Slovakia • Airport Košice a.s is the second largest airport in Slovakia • Košice region is affected by one TEN-T corridor: Corridor # 9 (Rhine - Danube)
Sustainable transport network	<ul style="list-style-type: none"> • Entire region is ensured by suburban regular bus service • The crucial railway track is the double-track electrified line Košice – Bratislava • Cycle touristic tracks network of 1.555 km
Flexible transport systems	<ul style="list-style-type: none"> • Seasonal summer and winter buses (operate only seasonally or at specific occasions with fixed route and stops, mostly small distances) • Event train • Sharing - bike rental

operator eurobus, a.s., Košice and the Transport Department of the Office of the Košice Self-governing Region.

The tourist destinations within the Košice region are also accessible by the event train that runs only for the previously specified events.

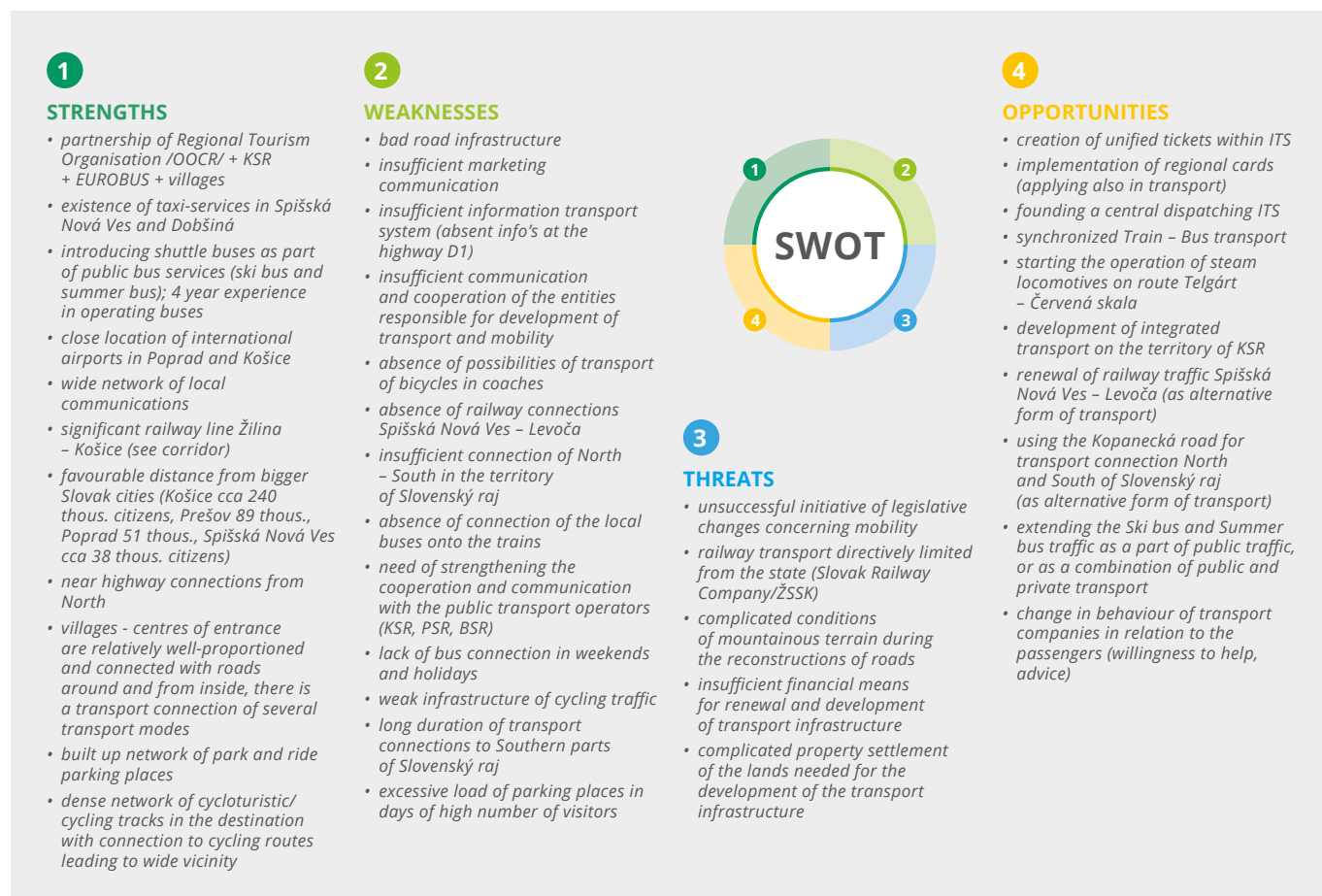
- 2) Bike rental is another type of flexible transport services that is available at the territory of Slovenský raj.

PORTRAIT SCOPE AREA:

Tourist destinations	Population	Number of arrivals (2015)	Overnight stays (2015)
Slovenský raj / Slovak Paradise	57.778	24.244	52.997

SWOT – Analysis

As a conclusion of the state-of-the-art analysis in the touristic „hotspot“ Slovenský raj / Slovak Paradise, the region has developed a SWOT analysis to identify success factors as well as difficulties in the practice of flexible transport systems. Here we present the results:



THE PROJECT PARTNERS



ALL ABOUT LAST MILE AT:

www.interregeurope.eu/lastmile

THE FULL ANALYSIS IS FREELY AVAILABLE AT THE PROJECT WEBSITE.

CONTACT:

Task leader

Mobility and Transport Direction
Ministry of Territory and Sustainability
Government of Catalonia
Lara Medina
T +34 671524216
E lara.medina@gencat.cat

Lead Partner

Environment Agency Austria
Agnes Kurzweil, DI
T +43-(0)1- 313 04-5554
E agnes.kurzweil@umweltbundesamt.at