

Territorial analysis and identification of *Tulcea County Council (RO)*

Table of contents

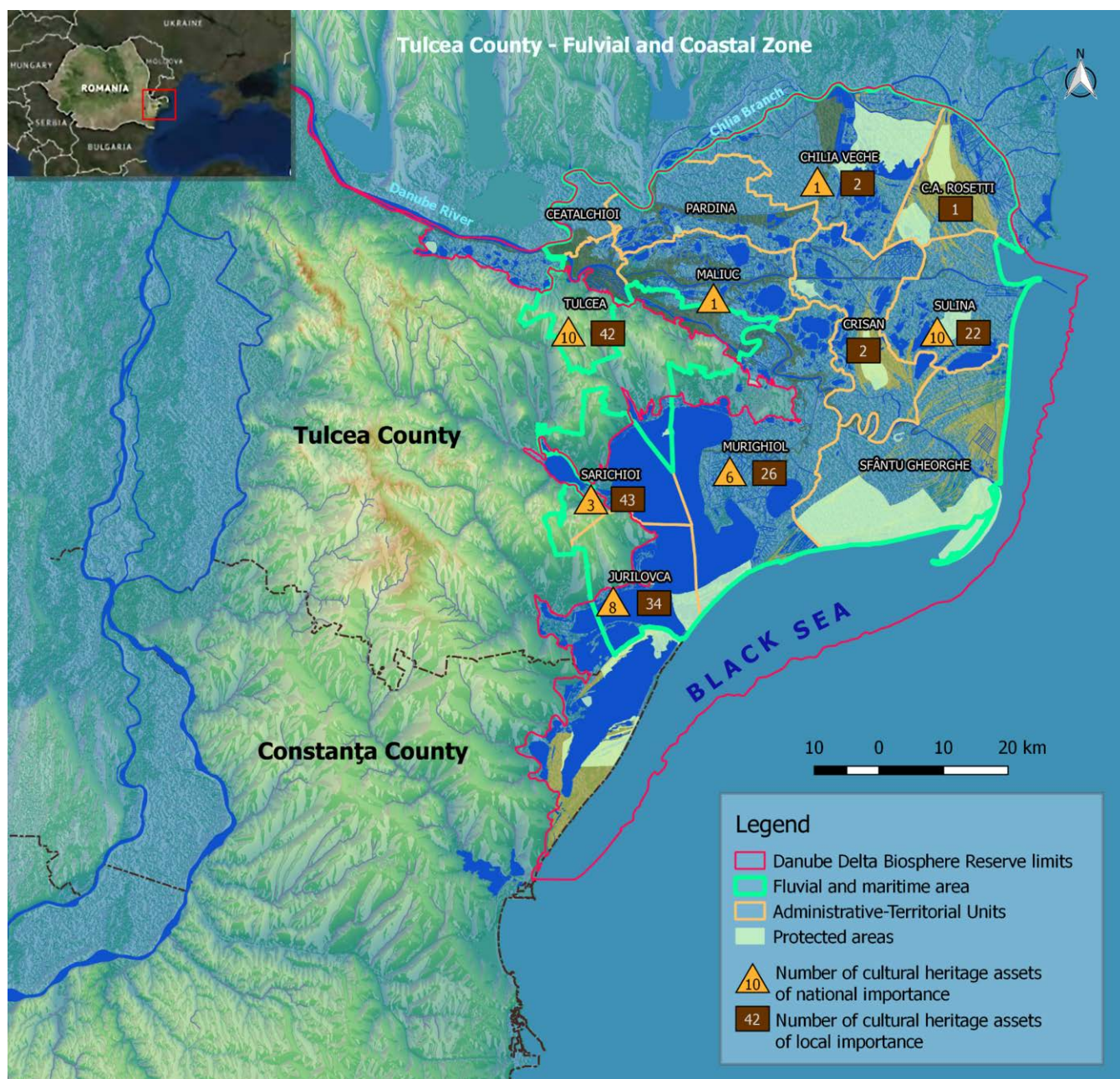
Table of contents.....	1
1. Landscape and heritage characterisation	2
2. Existing knowledge, material and approaches.....	9
3 .Existing policies on landscape and heritage1Feil! Bokmerke er ikke definert.	
4. Ongoing policy development processes.....	22
5. Looking forward to 2018 Cultural Heritage Year	25
REFERENCES	

1. Landscape and heritage characterisation

a) *Description of the landscape and the heritage*

The fluvial and maritime zone of Tulcea County, located in the SE part of the Romania, belongs to the Danube Delta Biosphere Reserve (DDBR) and encompasses the Danube Delta, Razim lagoon complex and marine coast area. Territorial-Administrative Units which compose this area are: Ceatalchioi, Pardina, Chilia Veche, C.A. Rosetti, Sulina, Crişan, Tulcea, Maliuc, Sf. Gheorghe, Murighiol, Sarichioi, Jurilovca, has about 4,267.00 km² area and about 118,000 inhabitants (reflected in an ethnic diversity of Romanians, Russian Lipovans, Ukranians, Greeks, Turks and other nationality). The territory is characterized by an aging population, whose occupations are mainly subsistence agriculture, fishing and livestock. DDBR represents a unique ecological site of major international importance (as UNESCO World Heritage Site that includes 5,425 species, of which 1,839 species of flora and 3,586 species of fauna) as well as having a strong identity within the Black Sea Region and in Europe. Coastal zone (105 km), the result of interaction between the Danube River and the Black Sea, it is subject to major changes caused by natural processes, strongly influenced by changes in the water catchment area of the Danube River and of the major interventions made on the coast. The fluvial and marine area is characterized by a rich and diverse cultural heritage, both tangible and intangible, on the *List of Historical Monuments in Romania* being included 40 built heritage assets of outstanding national and universal value: archeological monuments (from different historical periods), arhitectural, historical, funeral and memorials monuments. Regarding the **traditional architecture**, Danube Delta is one of the distinct ethnographic areas of Romania, which have largely preserved local specifics until present days, impressing by the traditions and architecture dating back hundreds of years. **The customs** express the social life of human communities, various aspects of its order.

b. MAP OF THE FLUVIAL AND MARINE AREA OF TULCEA COUNTY



c. Pictures of the landscape and heritage



Popina Island – Lake Razim (ATU Sarichioi) (Photo Daniel Petrescu)



Orgame/Argamum archaeological site – Doloșman Cape (ATU Jurilovca)
(Photo ICEM Tulcea Archive)



Enisala Fortress (ATU Sarichioi) (Photo ICEM Tulcea Archive)



Avramide House (ATU Tulcea) (Photo ICEM Tulcea Archive)



Lighthouse of European Comision of Danube (ATU Sulina) (Photo ICEM Tulcea Archive)

d. The challenges faced by landscape and cultural heritage in the coastal and fluvial zones

The fluvial and marine zone of Tulcea County, territorially corresponding to the most important protected areas in Romania and Europe, connects the Black Sea coast to the county's continental part. Generated by the mouths of the Danube and with a historical evolution, Danube Delta has a particular importance than other areas of Romania, due to its geographical position (the EU eastern border area), its natural resources (both aquatic and landscape), its ethnic and cultural diversity (traditions, customs, architectural elements, traditional cuisine, etc.), as well as its recognized economic and tourism potential, but which, paradoxically, hasn't changed its poor area status yet. An area facing various demographic challenges and regional disparities, but has added value given the lack of industrial activities that could affect the landscape.

The multiple statuses of the Danube Delta (*Ramsar* Wetland site, *Natura 2000* site, biosphere reserve and UNESCO world natural heritage site), the particular physical and geographical conditions of the area, as well as the presence of human settlements, determine a number of restrictions and limitations in the development of the fluvial a marine area. Due to the lack of a central coordinating mechanism of fluvial and maritime area, the diversity of intervention areas is doubled by a corresponding institutional complexity (i.e. five ministries having responsibilities in this area), institutional coordination being often complicated by the lack of communication, resources or the existence of incompatible interests. The management model of the area is in accordance with the recommendations of the UNESCO "Man and Biosphere" Programme and the Convention on World Cultural and Natural Heritage Protection. To be noted that public and environmental policies dominate this area, and the European environmental policy, well supported financially, gives Romania the chance to finance important investments in Danube Delta Biosphere Reserve. The cultural component, invariably linked to the history of the Danube Delta, doesn't benefit of the same opportunities/attention, thus the number of projects on restoration, preservation and harnessing the cultural heritage is relatively low compared to other areas of the country.

Under these conditions, **the preservation and protection of cultural heritage, especially the archaeological and historical one, is the main challenge.** The lack of funds is the first obstacle in any activity related to cultural and natural heritage management.

Although the *European code of conduct for coastal zones* (1999) stipulates the protection of coastal landscapes and cultural heritage against the pressure of economic interests and also the *National strategy on cultural heritage* focuses on the protection, conservation and restoration of cultural assets, it is noted a lack of initiative on the part of local authorities, in finding solutions to preserve the cultural “capital” of the area, vulnerable to damaging. The local authorities do not fulfil their legal obligations to preserve cultural heritage, because they are facing a budget deficit in the most basic sectors and needs of society: health, education and public safety. Solving economic and social problems of the local population (e.g. poverty, unemployment, migration, lack of basic facilities) has priority to the problems related to the cultural sector. There is a lack of penalties in the legislation for local public administrations, which determines passing the responsibility for managing the cultural heritage from one level to another.

The second obstacle is the lack of qualified human resources. Reducing the number of employees in the cultural sector by 32% in 2010 had impact on the quality of heritage surveillance, documentation and recording activities, as well as on the quality of the interpretation and presentation of cultural sites. There are also situations when archaeological sites are not signposted, implying difficulty in identifying them and favouring rapid destruction, due to human factors action.

Another challenge faced by this area is the harmonization of economic activities with the preservation of the landscape, to find a new way of adjustment between resources and consumers. The balance between nature and culture in the Danube Delta can be formed only through better knowledge of the role played by people in the area. Man and nature have rarely been considered as an ecosystem, which requires the right mix between the interests for development and conservation. Thus, the core relationship to be optimized by the development plans of the area, is between the operation of the biosphere, whose natural area should retain its integrity, on one hand, and, the human activity exploiting the resources of this country, on the other hand.

A special situation has the architectural heritage of Sulina town, which, in addition to the above mentioned challenges, is furthermore subject to flooding and coastal erosion, which are expected to cause damaging to historic buildings located on the seafront and harbor structures.

Danube Delta Biosphere Reserve is a complex area both in terms of natural heritage and numerous anthropogenic influences, exerted by so many social and cultural groups, local and central administrations, through their own strategies and measures.

Given the social, economic and environmental importance of cultural heritage of coastal zone, the decision makers are required to include protection of cultural heritage as part of integrated approaches to manage of the area, and put into practice action steps provided in line with principles of the *European code of conduct for coastal zones* and the *European recommendation on integrated management of coastal areas*.

2. EXISTING KNOWLEDGE, MATERIAL AND APPROACHES

Regarding natural and cultural heritage of the region, currently we cannot say that there is an integrated, common, coherent analysis, to generate sustainable public policies for the the Danube Delta region coastal area. However, a number of official documents and development strategies established the general directions for the development of the coastal zone. In the following we shall consider them.

A. The Master Plan for Sustainable Development of the Danube Delta Biosphere Reserve

A complete and complex analysis of the entire territory was conducted in 2005, when the **Master Plan for Sustainable Development of the Danube Delta Biosphere Reserve** was elaborated. The strategic document envisages the tasks and cooperation of decision makers, the projects and general programs currently in progress and the development planning, the financial regulation and the allocation of resources. The document is very important especially in what concerns the natural heritage of the area, setting the development directions. It presented a detailed territorial analysis, in terms of natural heritage, highlighting also issues as the population of delta territory, the ethnic mosaic and demographic structure, typology models of settlements, the socio-economic profile of the population, the household income, unemployment, infrastructure, services.

B. The Regional Development Plan 2014-2020 of the South East Development Region

Other important strategic document which also analyses the natural and cultural heritage is the 2014-2020 Regional Development Plan of the South East Development Region. The document, a complex one, substantiates the regional development policies of the Region by 2020, and examines in detail the aspects of natural and cultural heritage of the coastal territory analysed by us. Thus, it presents issues related to regional tourism in European context, the protected natural heritage, the natural landscape and main tourist attractions of the area, material and intangible cultural heritage, tourist accommodation and tourist flows, etc. The document to which we refer is particularly important, given that territorial analysis conducted within it, grounded the strategic directions and public policies in the area, in terms of integrated development of the South-East Development Region, which also includes Tulcea County.

C. The National Rural Development Programme for 2014-2020

One of the most important programmatic documents, which make a concrete analysis of the studied area, is the **National Rural Development Programme for 2014-2020**. Although it doesn't analyse separately the coastal area, the program, following a thorough analysis of rural, establishes strategic reference framework regarding rural development in the coming years. Within the analysis and the assessment of the development needs of rural areas for the next period, **Preserved Local Heritage** has a special place.

The area is characterized by: a weak capacity to develop and effectively implement local sustainable development projects; poor quality of tourist infrastructure; degradation of traditional establishments of cultural value, and of historical monuments. Also, it points out that the Romanian villages, with a rich legacy, need a better organization to preserve unique cultural resources and to use them for socio-economic development.

The rural, ethno-folk, cultural, environmental, gastronomic traditions and local characteristics of the environment, especially in mountainous areas, are insufficiently exploited for tourism development, for creating jobs, to generate income and to provide a positive impact on the sense of dignity and pride of local communities.

The support provided during an integrated and balanced process of territorial development, including through local development strategies, will lead to preservation and conservation of local heritage, and the related marketing actions could generate added value for local products.

An applied and recent territorial analysis was made during 2016, in order to achieve **Local Development Strategies**. In the territory we analyze, now operates a total of three LAGs (of the total five existing in Tulcea County). The 3 entities are: "Delta Dunării" LAG, "Oamenii Deltei" LAG and "Razelm" LAG. Again, these analyses didn't take into account exclusively the issues of natural and cultural heritage of the coastal area in Tulcea County, but reached these aspects. The analysis of these LAGs was done from the bottom up, from the people in communities, by conducting a complex participatory process, identifying local needs and the problems faced by the coastal region and setting general objectives for development, to embody development politics of the area.

D. The Integrated strategy for sustainable development of the Danube Delta and its implementation through an Integrated Territorial Investment

Perhaps the most important tool for the development of the coastal region is considered the one developed by the Ministry of Regional Development and Public Administration, with external expertise from the World Bank under the project "***The Integrated strategy for sustainable development of the Danube Delta and its implementation through an Integrated Territorial Investment***". The strategy was approved by government decision in mid 2016 and for the period 2016-2020 it establishes an integrated vision for the development for this Danube Delta area, a deprived area of the Danube Delta Biosphere Reserve, unique territory with very specific characteristics: sparse and isolated population, specialization and economic vulnerability, poor access to services, etc. Neither regarding this document can we speak of an analysis devoted to the natural and cultural heritage of the area. But it is a complete and comprehensive analysis which, based on the analysis of costs territory in the Danube Delta, sets development priorities until 2020, with an extension until 2030.

E. Local development strategies of local coastal communities

Local territorial analysis for each Administrative Territorial Units in the area has been initiated since 2008-2010. Although neither of these analyses treated separately the natural and cultural heritage, they have established general directions of action under integrated analysis of each specificity of community. Probably the most important project developed in the area in this regard, "*Delta Regioplan - participatory promotion of*

sustainable regional development in Tulcea County" was conducted by the Association for Sustainable Development of Tulcea County, in partnership with Tulcea County Council and the Association of Communes in Romania.

Financed by the Operational Programme Administrative Capacity Development, the project was intended to achieve 46 territorial analyses for as many communes in Tulcea County, also setting strategic directions and the action plan for sustainable development in 2010-2014. All local development strategies were updated for the 2014-2020 programming period, and in terms of territorial analysis for each commune, there were addressed issues as: socio-cultural life, local institutional environment, economic aspects, local infrastructure, local finances, cultural heritage, including tourist potential of each administrative territorial units (where applicable).

All analyses were carried out locally and based the strategic directions of action and the action plan to achieve them in 2010-2014, respectively 2014-2020.

Identical analysis were conducted for the five cities in Tulcea County area, two of which (Sulina and Tulcea) being included in the coastal area subject to our analysis.

A special place has Tulcea Municipality Development Strategy for 2014-2020, a complex document which sets, based on a detailed analysis of the current situation, the strategic direction and development policies for the mentioned period. As we mentioned in the beginning of this chapter, currently there is no special unitary analysis dedicated to the coastal zone in terms of natural and cultural heritage. Tangential and integrated, information related to coastal area, subject to present analysis, is found in all the documents mentioned.

The analysis closest to the specific of natural and cultural heritage of the referred area, is the analysis carried out with technical and financial support of the World Bank, which aimed to achieve *"The Integrated strategy for sustainable development of the Danube Delta and its implementation through an Integrated Territorial Investment"*.

Unfortunately, the lack of a concrete analysis, specifically dedicated to coastal natural and cultural heritage of this area can be an obstacle to effective management of the heritage. On the other hand, given the special problems of analyzed area that lead to application of special public policy for local development, probably the integrated approach to all aspects of development is an auspicious one and it can generate added value to the development of the area.

3. EXISTING POLICIES ON LANDSCAPE AND HERITAGE

Given that, as stated in the previous chapter, there isn't any unitary analysis, specifically dedicated to the coastal area subject to our study, in terms of natural and cultural heritage, we can say without fear of being wrong that the same thing is valid in what concerns establishing general and specific public policies related to the coastline under review. As a result, the strategic directions of action envisaged, the short, medium or longterm goals, are usually determined by each analysis document in question. However, all aim, in general, the same issues, key words as **improvement, promotion, development, effective management** being found in all the analysed documents regarding the medium and long term vision.

In Romania, regarding the coastal zone, at least in theory, all development policies considered should be conducted at least with the knowledge of the National Committee of Coastal Zone (CNZC), public entity which was established in the base of Emergency Ordinance no. 202/2002 on the coastal zone administration (approved by Law no. 280/2003, in order to ensure integrated management of the coastal zone), along with Ministry of Environment and Sustainable Development, consisting of the following institutions:

Basin Committee Dobrogea – Litoral (Dobrogea-Seaside)	Constanta City Hall
Ministry of Environment and Sustainable Development	Tulcea City Hall
Ministry of Transport, Construction and Tourism	Mangalia City Hall
Ministry of Economy and Commerce	Năvodari Town Hall
Ministerul Culturii și Cultelor	Eforie Town Hall
Ministry of Health	Costinesti Town Hall
Ministry of Agriculture, Forests and Rural Development	Agigea Town Hall
Ministry of National Defence	23 August Town Hall
Ministry of Administration and Interior	Tuzla Town Hall
Ministry of Education and Research	Sulina Town Hall
Institution of Prefect – Constanta County	Sf. Gheorghe Town Hall
Institution of Prefect – Tulcea County	Techirghiol Town Hall
Constanta County Council	Jurilovca Town Hall
Tulcea County Council	Murighiol Town Hall
Constanta Agency for Environment Protection	Limanu Town Hall
Tulcea Agency for Environment Protection	NGO Oceanic Club
"Grigore Antipa" National Institute for Marine	NGOMare Nostrum

Research and Development Constanta	
National Administration of Romania Waters – Direction for Water Dobrogea – Litoral (DADL)	NGOLiga Navala
Romania Academy	NGO- Prietenii Deltei
Danube Delta Biosphere Reserve Administration	NGOOrnithological Society

The main responsibilities of CNZC are:

- *Approving integrated management plans for coastal areas and local and regional urban plans;*
- *Approving impact studies for activities with significant impact, that will take place in the coastal zone, and environmental audit of existing works;*
- *Approving projects to create parks and nature reserves.*

CNZC also has the role of warning the competent institutions in case of finding the existence of critical situations requiring rehabilitation action in the coastal zone and initiation of projects. CNZC permanent technical secretariat is provided by the Ministry of Environment and Water Management, through the "Grigore Antipa" National Institute for Marine Research and Development Constanța.

However, the Committee limits are evident especially from the fact that CNZC has responsibilities regarding natural heritage of coastal areas and not integrated tasks, related exclusively to cultural heritage. Public policies related to cultural heritage are the responsibility of the Ministry of Culture and National Identity and are usually implemented in the territory through the County Directorates for Culture and National Heritage (Ministry of Culture's decentralized institutions in the territory).

The work plan for culture, in the period 2015-2018, adopted by the EU Council of Culture Ministers in December 2014, outlines **four priorities of European cooperation in the field of cultural policy**: accessible and inclusive culture; cultural heritage; cultural and creative areas, creative economy and innovation; promoting cultural diversity, culture and mobility in EU. EU funding from the pre-accession period of Romania and the period after joining the Union, have significantly contributed and continue to support the dynamic of cultural sector. For cultural and creative sectors there are available structural and investment funds (e.g. *Regional Operational Programme 2014-2020*) and Community funds for cooperation and mobility at European level (e.g. *Creative Europe 2014-2020*).

Beyond the cooperation between Member States within the framework of policies and initiatives agreed at European level, the EU creates the context for the development of mechanisms of cooperation with countries in neighboring regions and beyond, as well as establishing a special relationship through strategic partnerships. By way of example, **European Neighbourhood Policy** of EU provides a framework for cooperation, including in culture area, with countries in eastern and southern neighborhood of the EU (Algeria, Armenia, Azerbaidjan, Belarus, Egypt, Georgia, Israel, Jordan, Lebanon, Libya, Moldova, Morocco, Palestine, Syria, Tunisia, Ukraine).

Also, the Joint Communication of the European Commission and the European External Action Service ***Towards an EU strategy on international cultural relations***, from June 2016, proposes a strategic framework for strengthening international cultural relations, and a new model for cultural cooperation. The document contains recommendations modules for the implementation of actions to strengthen relations with third countries, in the light of three objectives: support for cultural cooperation as a catalyst for economic and social development; promotion of culture and intercultural dialogue for peace; developing cooperation in the field of cultural heritage.

Given the exceptional dowry of the coastal area under review, in terms of cultural heritage sites of national or local importance, in conjunction with the fact that natural and cultural heritage, through a better tourism use, may be the only ones that could bring added value and development o the area, we believe that the initiation of projects of this type is more than welcome. Especially since these issues were taken into account when analyzing to realizing the **National Strategy for Culture and National Heritage 2016-2020**.

Thus, according to the Ministry of Culture, the strategic vision of this strategy is articulated around cultural, social and economic realities: the cultural rights, underpinning the state intervention in culture; the recognition of the state of insecurity among cultural practitioners; the need to focus again on the public and culture community as a public service; the globalization of cultural production and consumption and the role of cultural diplomacy in international relations; the development potential of the creative economy; youth, as target group for cultural policy priority; the recognition of discrepancies between urban and rural areas in the cultural infrastructure, the offer and cultural consumption; the discussions on measures for cultural heritage by considering the natural cultural heritage; the public-private and national-local partnership approach in the implementation of cultural policies; an integrated and transversal approach, both of cultural policies and the role of

culture in development, education, competitiveness, etc.; the role of information and communication technologies (ICT) and digitization.

The proposed strategic approach is organized around five priority axes, thematically rather than sectorial defined:

1. **THE CULTURE - FACTOR FOR SUSTAINABLE DEVELOPMENT**
2. **THE CREATIVE ECONOMY**
3. **THE ACCESS TO CULTURE AND DIVERSITY OF CULTURAL EXPRESSION**
4. **ROMANIAN CULTURE IN THE INTERNATIONAL CULTURAL CIRCUIT**
5. **THE CAPACITY OF CULTURAL AND CREATIVE SECTORS**

THE CULTURE - FACTOR FOR SUSTAINABLE DEVELOPMENT reaffirms the importance of considering the identity and local and regional specificity, which implies the need to protect cultural heritage and awareness of its value by the community. These objectives converge toward positioning culture as a fourth pillar of sustainable development, alongside economics, social and environmental issues. The proposed measures affirms the contribution of culture and cultural heritage as elements of territorial vitality, by highlighting elements of local and regional identity and better protection of cultural heritage.

THE CREATIVE ECONOMY creates new jobs, attracts investments, generates added value and stimulates social and cultural development. Harnessing the economic potential of cultural and creative sectors is dependent on the sustainability of cultural and creative ecosystem through all its functions (creation, production/ editing, sharing/ trading, preservation, cultural education, management/ regulatory). The proposed measures aim at developing entrepreneurship, activating the economic potential of cultural and creative resources specific to the Romanian area and increased external commercial activity of Romanian operators in cultural and creative sectors.

THE ACCESS TO CULTURE AND DIVERSITY OF CULTURAL EXPRESSION depends on the existence of an enabling environment for freedom of expression and must be based on the intervention for the development of material conditions for creation. Audience development, supporting contemporary cultural forms, encouraging cultural expressions of minority groups, extending cultural interventions for vulnerable groups represents four complementary objectives undertaken by the MC (Ministry of Culture) to strengthen cultural democratization. These are the pillars of a cultural policy that MC assumes as

values: the participation and access for everybody to culture, plurality and diversity – of expression, gender or cultural styles – and it becomes their institutional guarantor.

ROMANIAN CULTURE IN THE INTERNATIONAL CULTURAL CIRCUIT recognizes the growing importance that culture has in the international dialogue, in promoting tolerance, acknowledgement of other persons and diversity. Through the development of cultural diplomacy, based on promoting values and Romanian cultural resources and facilitating dialogue and international cooperation between cultural operators, Romanian culture may gain greater visibility across borders, thereby contributing to the development of intercultural skills, the creative economy and the exchange of values.

These general directions for development are currently the only guidelines concerning national public policies regarding national cultural heritage.

The multitude of documents that converge, in strategic terms, in determining priorities for action at national or local level, but also include the coastline under review, lead to the establishment of strategic action specific to each of them.

Thus, the ***Master Plan for Sustainable Development of the Danube Delta Biosphere Reserve***, reference document prepared since 2005, is analysing strategies and interventions in four general areas of development, as it follows:

- 1. Development Strategies for integrating biodiversity conservation objectives with implementation of policies on socio-ecological systems;**
- 2. Fostering the sustainable development of Danube Delta Biosphere Reserve;**
- 3. Promoting growth and social development;**
- 4. Trademark;**

Cultural development of the area based on the enhancement and preservation of cultural values in the area, along with eco-tourism as a form of sustainable tourism in the Danube Delta, was included in the 3rd development area (***Promoting economic growth and social development***). The document refers in particular to the ethno-cultural conservation of the area and putting it in value, in harmony with the environment, and does not address the strategic priorities for the development of heritage, especially the one built in the Danube Delta.

On the other hand, the Development Plan for the South East Development Region states that the overall objective is to promote sustainable development and improve the quality of life so that it becomes a competitive region in the long term, attractive to

investment, harnessing the environmental heritage, the highly qualified human resources, creating new employment opportunities and the significant increase of regional GDP by 2020, up to 90% of the national average.

As a specific development objectives related to the specifics of our study, we mention:

Specific Objective 1.1 – Increasing the attractiveness and competitiveness of urban areas in order to preserve, protect and develop historical and cultural heritage for the development of the region;

Specific Objective 4.1 – Increasing promotion and the degree of economic use of the local tourism potential (leisure tourism, scientific tourism, educational tourism hunting and fishing tourism, spa and treatment, cultural tourism, oenological and gastronomical tourism, etc.);

Specific Objective 4.2 – Improving specific tourism infrastructure in order to increase the region's attractiveness as a tourist destination;

Specific Objective 5.1 – Efficiently and sustainably harnessing natural heritage through the creation / modernization of necessary infrastructure for providing drinking water to the population and the collection and treatment of wastewater in order to increase quality of life.

Regional Development Plan aimed at 10 development priorities of which two are dedicated to the natural and cultural heritage: **Priority 4 (Improving the quality of tourism at regional level)** and **Priority 5 (Conservation and environmental protection)**.

The proof of National Program for Sustainable Development 2014-2020 considering the development of cultural heritage a priority, is the fact that within it there is a measure dedicated to protecting cultural heritage (**sub-measure 7.6 – Investments associated with protecting cultural heritage**) whose purpose is to support investments in protecting cultural heritage and in conserving heritage of local interest, the monastic establishments including the modernization of cultural establishments. Thus, more specifically, it envisages supporting investments for restoration, preservation and accessibility of intangible cultural heritage of local interest, the monastic establishments including cultural institutions, enhancement of local cultural heritage, promotion of rural tourism.

As part of the NRDP, **LEADER** is applied to the sustainable development of local communities and it sets specific public policies. It is necessary to promote local

development through **LEADER** instrument for promoting bottom-up initiatives and development activities by local communities, taking as a starting point the needs and endogenous potential identified locally. The need to develop in an integrated and innovative manner, the issues of local importance, for balancing development of local communities, is vital to accelerate the structural evolution of these communities.

Also, the need to strengthen local governance in terms of management capability must be enhanced, for stakeholders in rural areas to be better informed and encouraged about the possibility to be more closely involved in the development of their local communities. Involving local actors in the development of areas, in which they operate, will contribute to a dynamic development supported by a local development strategy locally made and implemented, and administered by representatives of the Local Action Groups (LAG).

The development objectives of the territory, identified within the local development strategy of Delta Dunării LAG, for example, are consistent with meeting the general or specific problems and needs, identified by the local community, being outlined an unitary vision on economic and social specific of the whole territory. Thus, there were identified nine general needs which, through several specific objectives, were embodied in six local development measures.

The identified needs are:

(N1) Raising the living standards of local people by reducing poverty;

(N2) Encouraging young people to take up economic activities;

(N3) Encouraging small farmers to develop their own local business;

(N4) Reducing the phenomenon of depopulation of villages;

(N5) Development or establishment of non-agricultural activities in the territory to diversify the local economy;

(N6) Development of associativity and local cooperation between small businesses by initiating joint work processes to develop products / services, especially in the tourism sector;

(N7) Supporting the development of territory social infrastructure and social services associated;

(N8) Supporting the social inclusion of disadvantaged people, especially the elderly and local minority representatives;

(N9) Development of basic infrastructure and adequate services, in the territory, including the preservation and promotion of local heritage.

To meet these needs, there were identified six measures of support, and the importance given to cultural heritage is highlighted by the fact that one of the measures supports such activities in the coastal zone: **M5/ 6B "Investment in social infrastructure and the integration of national minorities"**. The aspects are even clearer for "Oamenii Deltei" LAG which assumed seven measures of local development of communities in the Danube Delta, two of them as priorities to support cultural heritage: **M5/ 6B "Investments in rural infrastructure on a small scale, local basic services, cultural heritage and quality of life", M7/ 6B "Preserving and promoting the culture, language and identity of minorities within the LAG Oamenii Deltei"**.

Within the **"Integrated strategy for sustainable development of Danube Delta and its implementation through an Integrated Territorial Investment "**, the document most complex and approaching the most the specifics of our study, as it presents a vision of development of a vast expanded coastal area including all the territory analyzed by us in terms of development policies, the vision for the area is defined as: *An attractive area – with valuable biodiversity and a dynamic business environment, with low and medium level economic activity, both in traditional and modern areas - where people live in harmony with nature, integrating economic activity in sectors such: tourism, agriculture and fishing, with adequate support from the urban centers who provide services.*

The two strategic objectives envisaged in the strategy are:

- ***Preservation of unique natural values through an environmental management, guided by science and by strengthening local communities and their role of proactive protector of this unique world heritage;***
- ***Developing a local, green, inclusive economy, based on sustainable consumption and protection, efficient in term of resource, harnessing comparative advantages of the area and the support of improved public services.***

The lines of action to meet the needs of the area were grounded, in the strategy, on 7 operational programs, as it follows:

- ***Large Infrastructure Operational Program (POIM);***
- ***Competitiveness Operational Program (POC);***
- ***Technical Assistance Operational Program (POAT);***
- ***Regional Operational Program 2014-2020 (POR);***
- ***Operational Program for Administrative Capacity (POCA);***
- ***Human Capital Operational Program (POCU);***
- ***National Rural Development Program (PNDR);***

➤ **Fisheries and Maritime Affairs Operational Programme (POPAM);**

The problems identified during the Strategy development process, in terms of natural and cultural heritage, were mainly included in the **Regional Operational Programme 2014-2020** under **Priority Axis 5: Improving the urban environment and conservation, protection and sustainable use of cultural heritage** and **Priority Axis 7: Diversify local economies through sustainable tourism development.**

Also, local development strategies carried out by territorial administrative units in Tulcea County (including the municipality of Tulcea), summarize 8 priority areas for development till August 2020, as follows:

- *Protection of the natural elements;*
- *Improving local infrastructure and increasing access to quality public services;*
- *Increasing the use of information technology in the public and private sectors;*
- *Promoting research and development. Support for innovation;*
- *Human resource development;*
- *Eco-efficient management of resources use;*
- *Institutional capacity development;*
- *Increasing the capacity of local communities in decision making.*

A very important document in terms of development policies for coastal areas is the **EU Strategy for the Danube Region**. This document is a community instrument for macro-regional cooperation within the European Union, to which there are invited to participate the 14 EU Member States and the third states in the Danube (Germany, Austria, Slovakia, Hungary, Bulgaria, Romania, Czech Republic, Slovenia, Croatia, Serbia, Moldova, Ukraine, Bosnia-Herzegovina and Montenegro).

The strategy was developed by the European Commission in 2010, on the basis of contributions from bordering states, including Romania. Currently, the Danube Strategy is in the phase of implementation. Strategy will be implemented individually by each riparian member state. It addresses local and regional authorities and meets their development needs. Romania is co-initiator of SUERD, along with Austria, and contributes to the development and implementation of the Danube Strategy, together with all other riparian countries, on the basis of national positions defined in the special interministerial working group created in this respect. The Ministry of External Affairs provides national coordination in the field and to this end has been created the Office for the Danube Strategy. Romania manages three priority areas of the 11 existing in the Danube Strategy. Each priority area is coordinated by two states / provinces in the region.

Romania coordinates the following areas:

- ✓ Transport on inland waters - along with Austria
- ✓ Culture and Tourism - together with Bulgaria
- ✓ Management of environmental risks - along with Hungary

The projects proposed in the framework of the Danube Strategy can be financed through European funds already existing - Structural and Cohesion Funds, the EU Fund of Solidarity, the FP7 Programme, LIFE + instrument, the European Fund for Agricultural Guarantee and the Fund for Rural Development and also through funds provided by international financial institutions (European Bank Investment, European Bank for Reconstruction and Development), public-private partnerships, contributions from the national or local budgets.

The Danube Strategy is also an important step towards simplifying current funding procedures and supports efforts to absorb European funds already committed to finance investment projects. It envisions development opportunities that are given by the opportunity to be sustained by investment to generate growth through tourism potential, enhancing social cohesion and creating new jobs.

Romania has proposed major projects such as:

- Hydrographic improvement works on Argeş River for flood protection, irrigation and other uses (Danube – Bucharest Channel);
- **Establishment of an International Centre for Advanced Studies Danube - Danube Delta - Black Sea;**
- Construction of new bridges over the Danube together with Bulgarian partners (Bechet-Orehovo, Calafat-Silistra);
- **Implementing a project for risk management in the Danube Delta (floods, accidents with transboundary impacts).**

4. ONGOING POLICY DEVELOPMENT PROCESSES

Certainly, the most important priority envisaged for the Danube Delta area in terms of integrated investment is the ***Priority Investment 5.1 – "Preserving, protecting, promoting and developing natural and cultural heritage"*** which aims, as specific objective, to boost local growth through conserving, protecting and harnessing the cultural heritage and cultural identity. This investment priority could ensure carrying out specific activities for the rehabilitation and enhancement of the **historical monuments of**

national and world value (group A) and those sites **representants of local cultural heritage (group B)**. This priority investment will finance the restoration, protection, conservation and sustainable use of UNESCO heritage, national cultural heritage (regardless of their location, in urban or rural area) and local cultural heritage in urban areas. Complementary, the National Rural Development Programme, previously mentioned, will finance the local cultural heritage sites in rural area.

The specific activities of the cultural heritage include, but are not limited to:

- Restoration, consolidation, protection and preservation of historical monuments;
- Interior improvements (facilities, equipment and facilities to ensure climate conditions, fire safety, prevent burglary);
- Facilities for exhibition and protection of movable and intangible cultural heritage;
- Marketing and tourism promotion activities restored site, including its digitization within the project.

Common and specific indicators of achievieng the program, subject to this performance monitoring program and to this priority investment are: restored cultural heritage sites; increasing the number of expected visits to cultural and natural heritage sites and the supported attractions.

At the same time, project indicators subject to monitoring implementation and performance of the proposed investment, covered by project, reffer to:

- The number of restored / protected / preserved heritage sites;
- Number of visitors before or after intervention on supported heritage site.

The visitor is a person who is visiting a heritage site.

There are eligible to apply for funding, the entities which intend to implement projects in the territory of ITI (as it is stated in ISSDDD), such as:

- ✓ Administrative-territorial units;
- ✓ Authorities of the central government;
- ✓ Cult unit;
- ✓ NGOs;
- ✓ Partnerships between these entities, namely:

- Administrative-territorial unit, as leader of a partnership with other administrative-territorial unit, with a central government authority, cult unit or NGO;
- Authority of central government, acting as leader in partnership with an administrative-territorial, cult unit or NGO.

The value of projects ranges between the minimum 100,000 euro and the maximum 5,000,000 euro.

Complementary to this program, in the coastal area under review, operates within the National Rural Development Programme, the ***Sub-measure 7.6 –Investments associated with protecting cultural heritage***. The goal of supported investment under this sub-measure is to protect the cultural heritage and/ or realization of investments for preserving heritage of interest, the monastic establishments, including the modernization of cultural establishments.

The objectives are:

- ✓ Supporting the investment in restoration, preservation and accessibility of intangible cultural heritage of local interest, the monastic establishments, including cultural establishments;
- ✓ Showcasing local cultural heritage, to promote rural tourism, thereby raising living standards in rural areas;
- ✓ Sustainable local development;

Eligible recipients for funding are:

- ✓ NGOs , as defined by law;
- ✓ Cult units, according to the law;
- ✓ Authorized individuals/ companies who administrate Class B cultural heritage sites of public utility;
- ✓ Communes as defined by law;

The total value of funded projects can not exceed 500,000 euros.

The two currently open funding processes, or to be open in the area, are representative in terms of identifying opportunities for rehabilitation and enhancement of heritage sites. A rehabilitation of such sites could bring added value to the area, could lead to further increase in tourism and sustainable development of the coastal area under review.

5. LOOKING FORWARD TO 2018 CULTURAL HERITAGE YEAR

At the local authority level there is no fixed timetable of the actions dedicated to the celebration of International Heritage in 2018. Actions may be proposed as a presentation and awareness of the value of cultural heritage in the area, to the local community and tourists coming in Tulcea, are exhibitions with following topics:

- Creations of the Romanian artists of outstanding international value;
- Important archeological discoveries at the mouths of the Danube.

Also, at two archaeological bases (*Argamum/Orgame* and *Halmyris*) it could be organize *The Open Days*, in which the archaeologists their work that they do for discovery, conservation and preservation the vestiges of the past.

REFERENCES

- ANDREȘOIU, B., *Stuf – case tradiționale din Delta Dunării*, Editura Igloo, București, 2008;
- BONDAR, Ctin, DIMA, Virginia, IACOVICI LUNGU, Eugenia, *Sulina. Monografie*, București, 2010, p. 23-24,43-45,65,67;
- IONESCU, M.D., *Dobrogea în pragul veacului al XX lea*, 1904, p.250,260-262, 264, 374, 376, 402-403, 411;
- GÂȘTESCU, P., ȘTIUCĂ, R., *Delta Dunării, Rezervație a biosferei*, Editura CD Press, București, 2008, p. 399;
- MEIȚĂ, V., PETRIȘOR, A. I., GEORGESCU, E. S., *Planning, architecture, seismic, construction and energy-related criteria for sustainable spatial development in the Danube Delta Biosphere Reserve areas*, Rev. Urbanism. Arhitectură. Construcții, Vol. 5, Nr. 3, 2014; <http://uac.incd.ro/Art/v5n3a06.pdf> (accesat 22.02.2017);
- PÂRÂU, Steluța, *Multiculturalitatea în Dobrogea*, Editura Ex-Ponto, Constanța, 2007, p. 235+ 4 planșe;
- PÂRÂU, Steluța, *Values of the traditional civilization within Danube Delta Biosphere Reserve*, GEO-ECOMARINA, RCGGM, nr. 1/1996: 85-87;
- Studiu istoric și arheologic comuna Pardina, județul Tulcea*, coord. Cristian Micu, Institutul de Cercetări Eco-Muzeale Gavrilă Simion Tulcea, 2013; Arhiva ICEM Tulcea;
- Studiu istoric și arheologic comuna Crișan, județul Tulcea*, coord. Cristian Micu, Institutul de Cercetări Eco-Muzeale Gavrilă Simion Tulcea, 2015; Arhiva ICEM Tulcea;
- Studiu istoric și arheologic comuna Chilia Veche, județul Tulcea*, coord. Cristian Micu, Institutul de Cercetări Eco-Muzeale Gavrilă Simion Tulcea, 2016; Arhiva ICEM Tulcea;
- Strategia integrată de dezvoltare durabilă a Deltei Dunării*, Raport sinteză –document pentru consultare publică, M.D.R.A.P.,2015;
- Hotărâre de Guvern nr. 1516 din 19 noiembrie 2008 privind aprobarea *Regulamentului-cadru de urbanism pentru Rezervația Biosferei Delta Dunării*, Monitorul Oficial, Partea I, nr. 838/2008;
- Lista Monumentelor istorice*, 2015, Anexa la Ordinul ministrului culturii nr. 2.828/2015, pentru modificarea anexei nr. 1 la Ordinul ministrului culturii și cultelor nr. 2.314/2004, privind aprobarea Listei monumentelor istorice, actualizată, și a Listei monumentelor istorice dispărute, cu modificările ulterioare, Ministerul Culturii, M.Of.R., Partea I, nr. 113 bis/2015, vol. II, p.2508-2563, Județul Tulcea;
- Ghidul turistic al județului Tulcea, 2011.

Internet Sources:

<http://atelier.liternet.ro/articol/15442/Augustin-Ioan/Pentru-respectarea-peisajului-si-traditiilor-arhitectonice-locale-in-Delta-Dunarii.html> (accesat 01.02.2017)

<https://www.primaria-sulina.ro/primarie/pid/integratapid.pdf> – *Planul Integrat de Dezvoltare al orașului Sulina*, Aprobat prin Hotărârea Consiliului Local Sulina nr. 14 din data de 20.02.2009 (accesat 20.02.2017);

<https://www.primaria-sulina.ro/primarie>, *Sulina – Plan integrat de dezvoltare urbana*, volum sinteză, „ECO-SULINA - o comunitate solidară, păstrătoare a unei tradiții multiculturale europene, un oraș verde, poartă de intrare în istoria și cultura Delta Dunării și a Mării Negre”, 2012;

<https://icemtl.ro>;

<https://www.cjtulcea.ro> (accesat 07.02.2017);

<http://www.primariatulcea.ro/primaria-municipiului-tulcea>;

<http://djctl.blogspot.ro/2016/09/lista-monumentelor-istorice-2015.html> (accesat 04.02.2017);

<http://www.cultura.ro/sites/LMI-TL.pdf> (accesat 04.02.2017);

<http://lege5.ro/Gratuit/gq4dimbz/lista-monumentelor-istorice-2015-judetul-tulcea> (accesat 04.02.2017);

<https://archeologie-danube.hypotheses.org/category/terrain> (accesat 27.02.2017)

http://www.paginadestart.com/comon/resurse/pardina/Strategia_de_dezvoltare_comuna_Pardina_judetul_Tulcea.pdf (accesat 10.01.2017);

<http://www.primariachilia.ro/Strategia>, *Strategia Integrată de Dezvoltare Durabilă a Comunei Chilia Veche*, Jud. Tulcea Revizia 1 la varianta 2012-2016, aprobată prin HCL Nr.35/26.06.2009 (accesat 10.01.2017);

<http://www.primariasfantugheorghe.paginadestart.com/Strategia-de-Dezvoltare> (accesat 07.02.2017);

http://www.paginadestart.com/comon/resurse/crisan/strategia_de_dezvoltare_comuna_Crisan_judetul_Tulcea.pdf;

<https://www.google.ro/Asociatia+Letea> in+UNESCO;

<http://www.ghiduri-turistice.info/ghid-turistic-comuna-jurilovca-un-loc-puternic-marcate-obiceiurile-si-traditiile-lipovene>

<http://www.primariasarichioi.ro/>(accesat 11.02.2017)

http://www.mdrl.ro/_documente/dezvoltare_teritoriala/amenajarea_teritoriului/patz_delta_dunarii/CD_Predare1.1/Memoriu_final.pdf

<http://www.rmri.ro/Home/Responsibilities.CNZC.html>

<http://legeaz.net/oug-202-2002-gospodarirea-integrata-zonei-costiere/art-68-comitetul-national-al-zonei-costiere-atributii-si-raspunderi>