



# The Wadden Sea

**Mette Guldberg**

Head of Research and Communication, Fisheries and Maritime Museum

Senior researcher, Center for Maritime and Business History/

University of Southern Denmark

• 22 June, 2016 | Opening conference in Ny-Hellesund

# The Wadden Sea Dealing with Cultural Heritage in Intertidal Wetlands

Mette Guldberg, PhD

Head of Research and Communication, Fisheries and Maritime Museum  
Senior researcher, Center for Maritime and Business History/  
University of Southern Denmark

*Kulturminner i europeiske kystlandskap*

*HERICOAST*

*Ny-Hellesund, Norge, 22. juni 2016*



Fiskeri- og Søfartsmuseet  
Saltvandsakvariet. Esbjerg

## The Wadden Sea

- ❑ Largest unbroken stretch of intertidal mudflats in the world
- ❑ 12 million birds pass through each year
- ❑ Shared by three countries
- ❑ 14,700 km<sup>2</sup> Trilateral Cooperation Area

Denmark

Schleswig-Holstein

Hamburg

Lower Saxony

Germany

The Netherlands



# The Trilateral cooperation

Since 1978, the responsible ministries of the The Netherlands, Denmark and Germany have been working together on the protection and conservation of the Wadden Sea covering management, monitoring and research



# Trilateral Wadden Sea Cooperation

A satellite map of the Wadden Sea region, showing the coastal areas of the Netherlands, Germany, and Denmark. The sea is a light blue color, and the land is green. The map is oriented with the sea on the left and the land on the right.

**Guiding principle:** “to achieve, as far as possible, a natural and sustainable ecosystem in which natural processes proceed in an undisturbed way”.

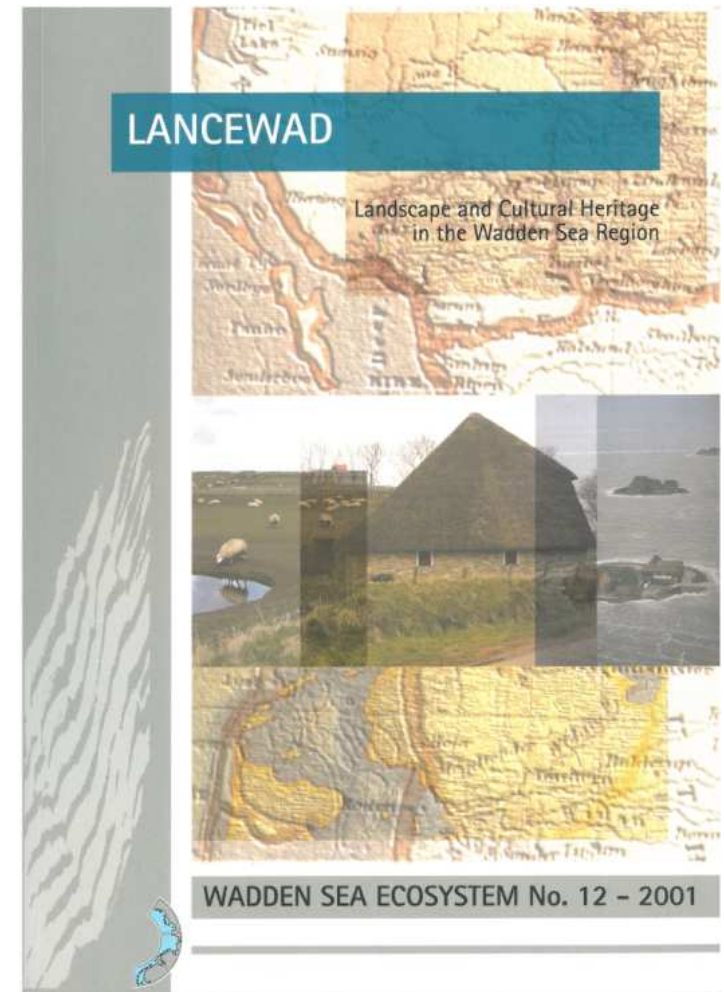
## Trilateral Governmental Conferences

**1982 Joint Declaration on the Protection of the Wadden Sea** **New 2010**

**1997 Trilateral Wadden Sea Plan** **New 2010**

# Culture in the trilateral cooperation

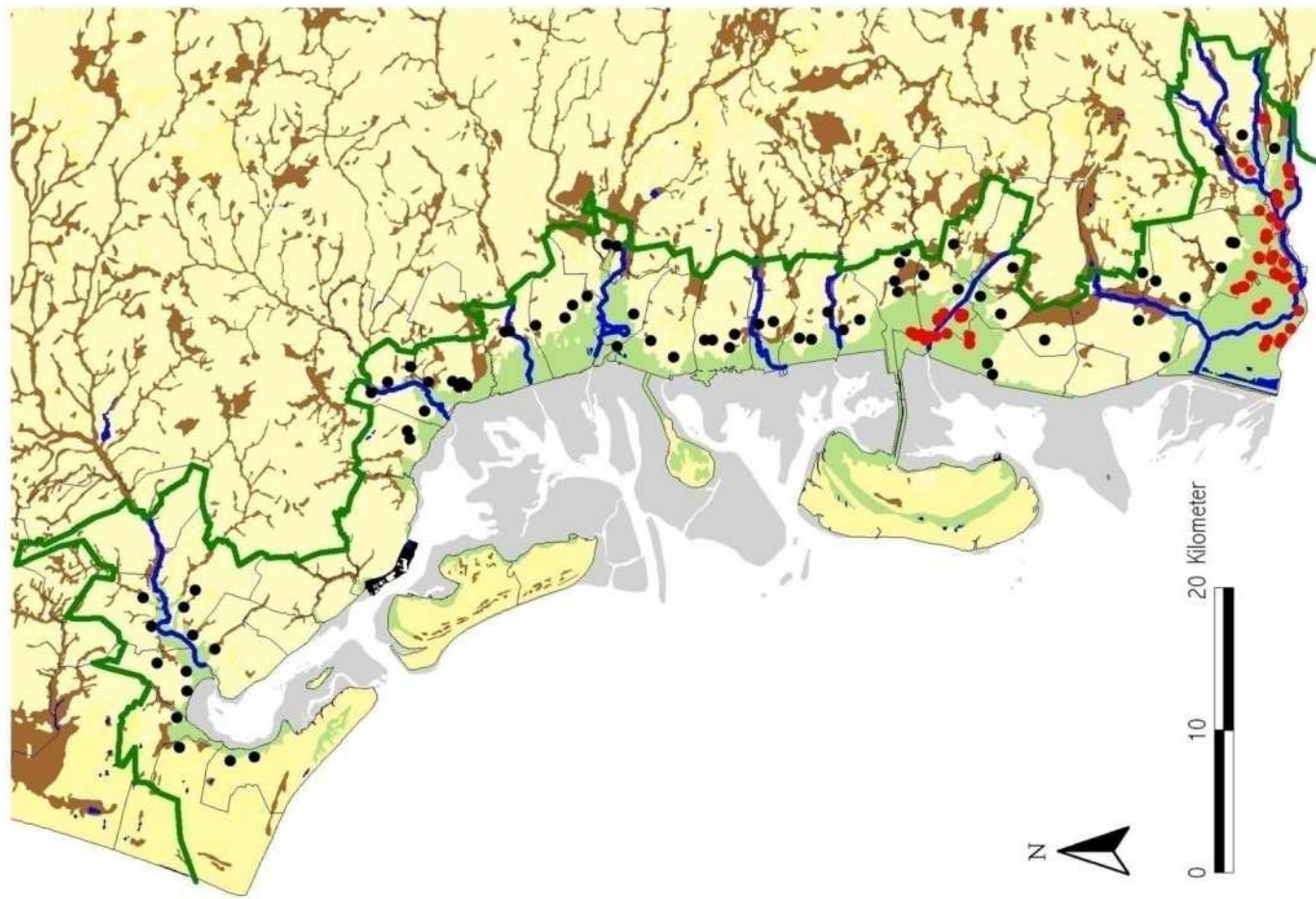
- From 1994 also cooperation on culture
- Mapping of landscape and culture elements
  - Lancewad 2000-2001
- Managing of landscape and cultural heritage
  - LancewadPlan 2004-2007













# Example of elements typical of the Wadden Sea Region



# Settlements on the geest



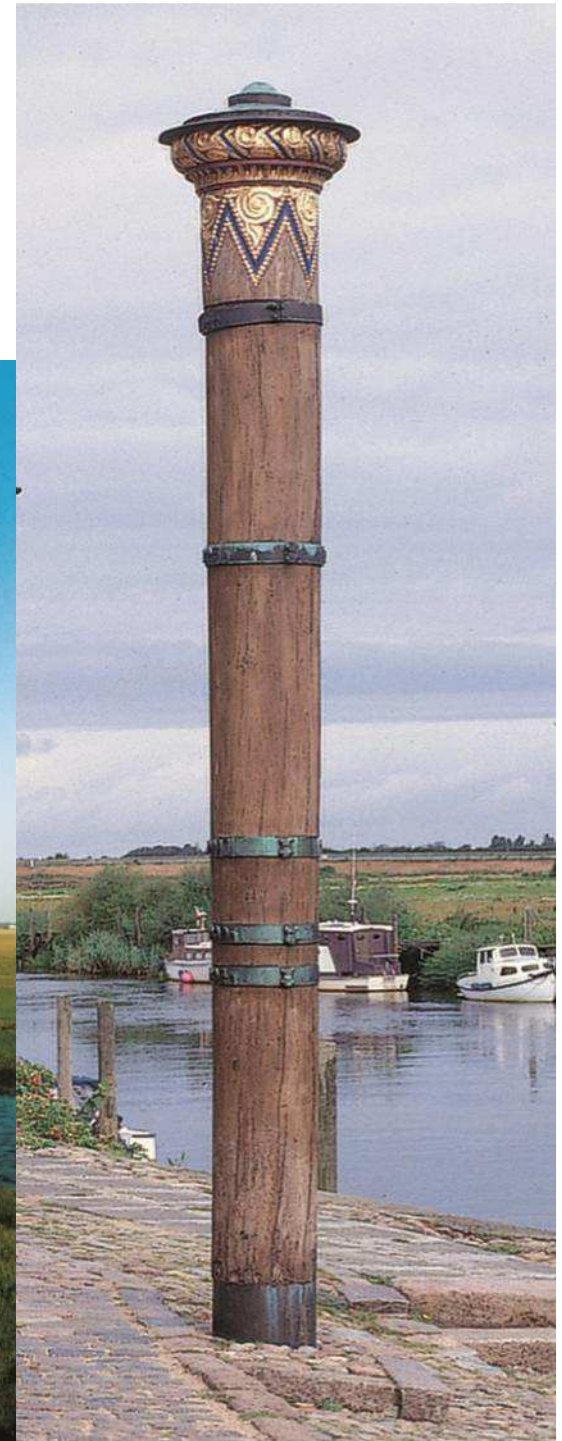


# Dwelling mounds





# Storm surges





# Dikes and Polders



# Sluices





# Pumping stations





# Land Reclamation



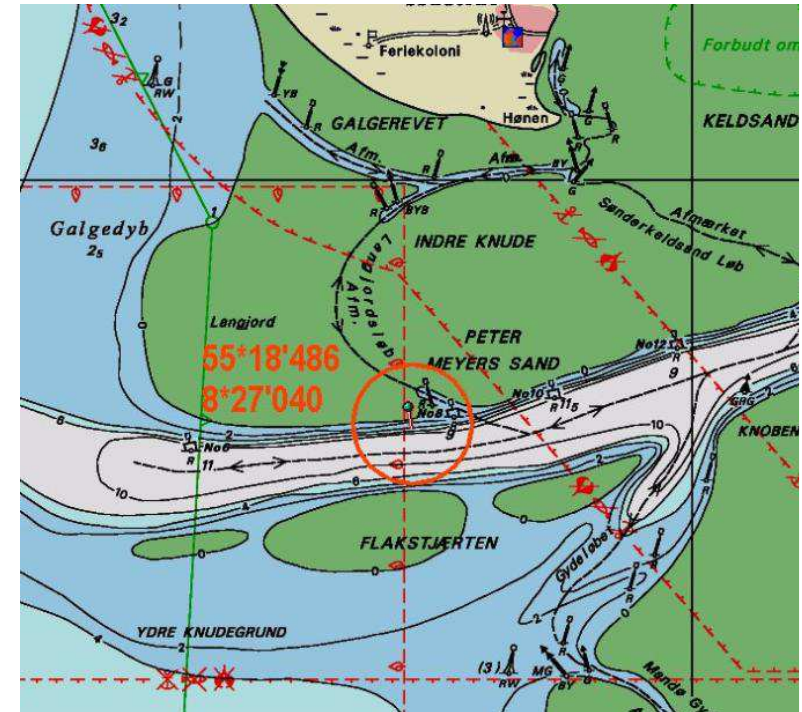


# Roads in the Sea

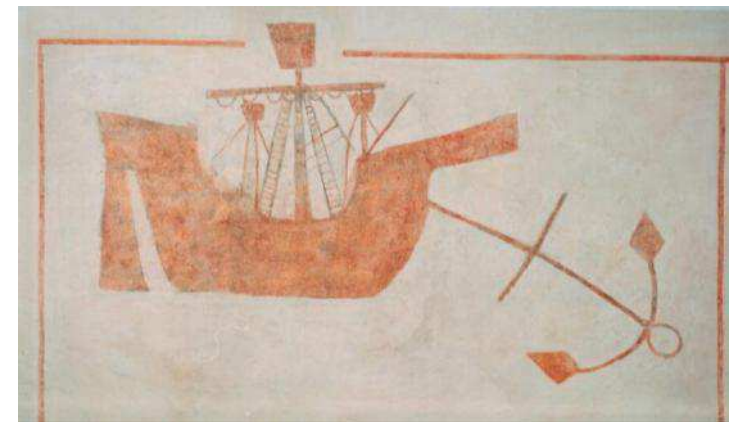




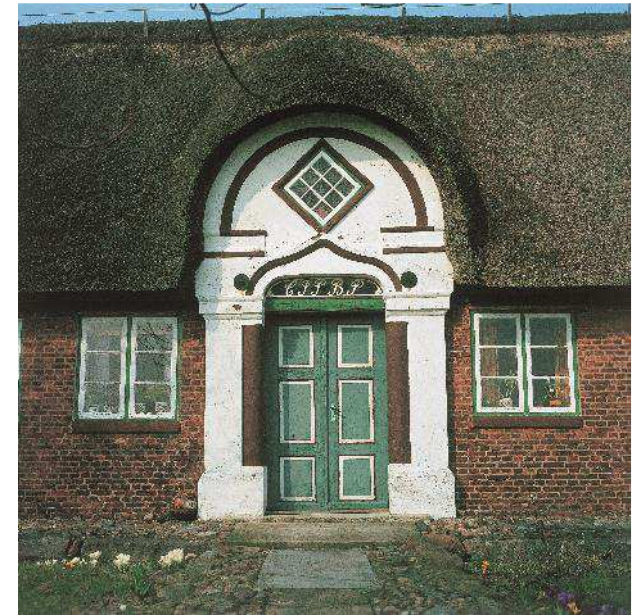
# Ship wrecks



- Tree cut down summer 1264
- found in Knudedyb by E4 "Ho Bugt" 2006







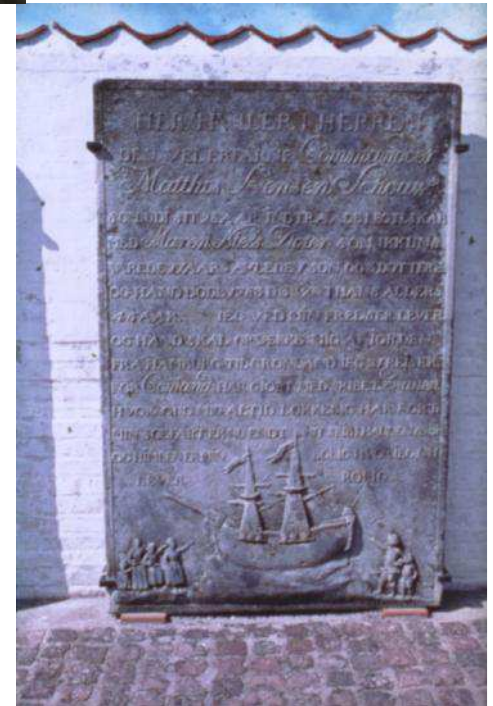
# Farmhouses







# Whaling

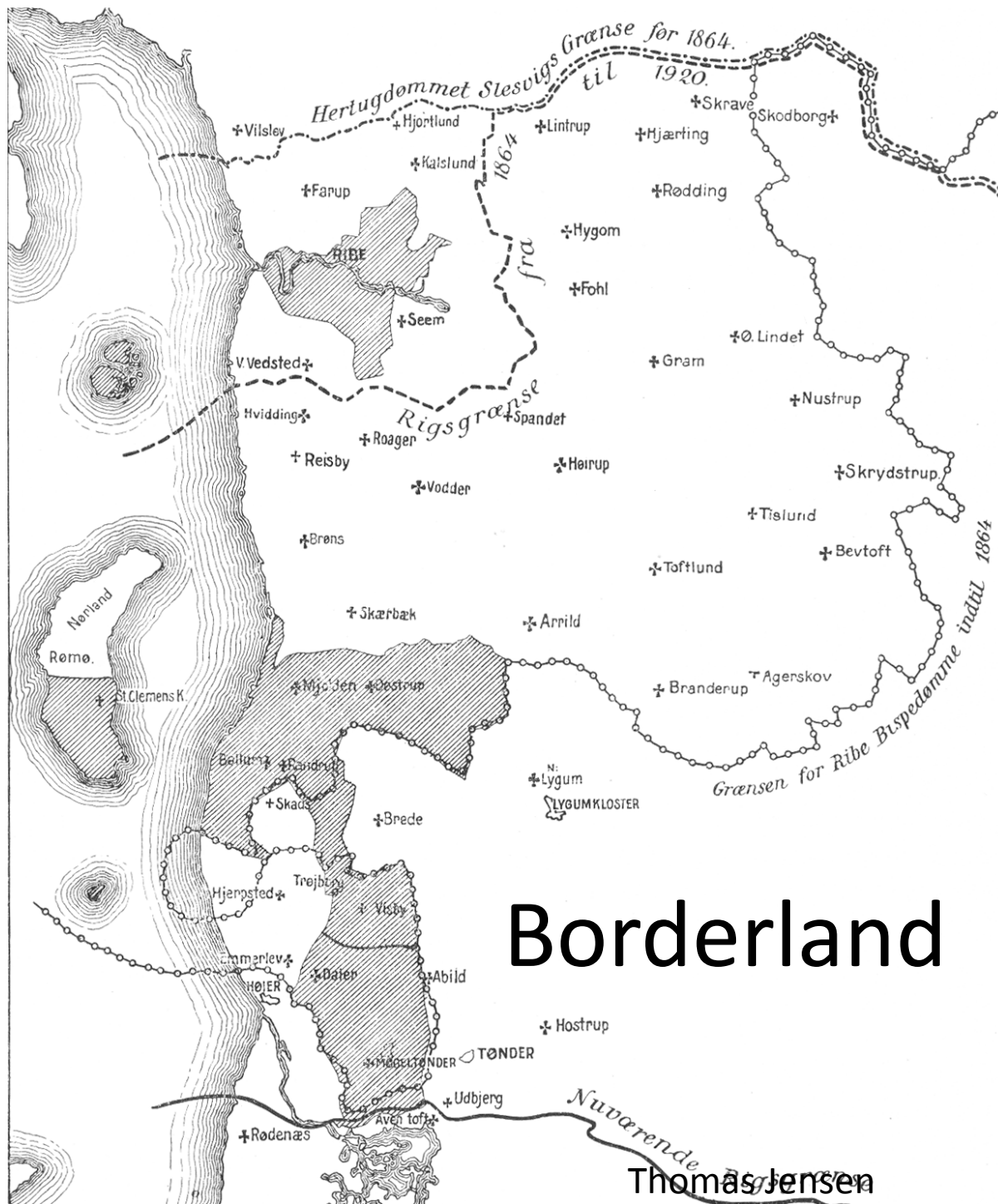




# Lighthouses and rescue stations









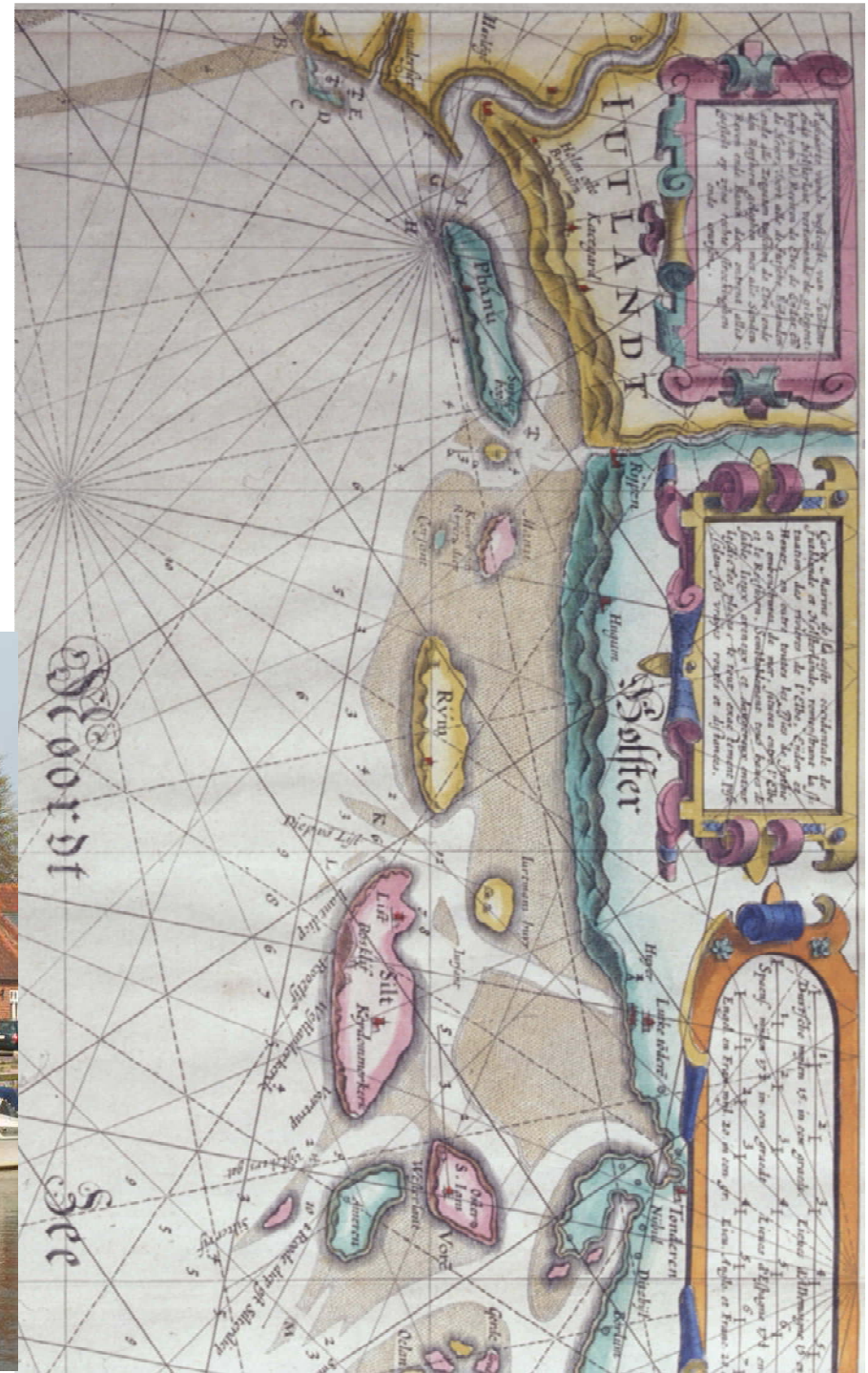
# Immaterial Culture





# Three Old Towns

*Varde*  
*Ribe*  
*Tønder*





# And their outports

- Janderup
- Ho
- Sønderside
- Skallingkrog
- Tarp
- Myrthue
- Marbæk
- Kjelst
- Sjælborg
- Hjerting
- Fanø (=Nordby)
- Strandby
- Gammelby
- Roborghus
- Tømmerby
- Sneum
- Allerup Knap
- Darum
- ... and many more



Only few traces left





# Esbjerg Havn 1868





... new trades

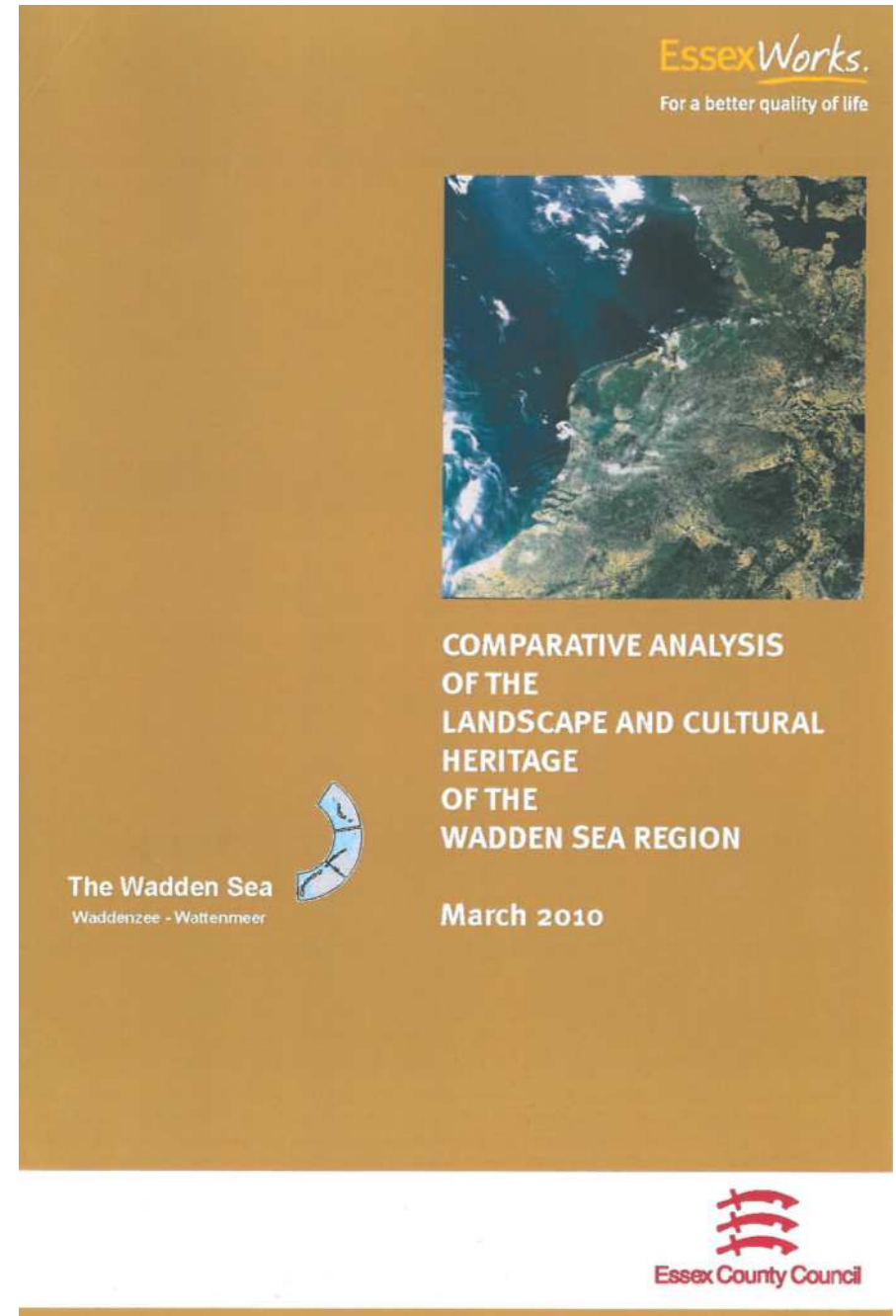




# Essex Report 2010

- Comparative Analysis of the Landscape and Cultural Heritage of the Wadden Sea Region
- Comparison with 15 wetlands worldwide:

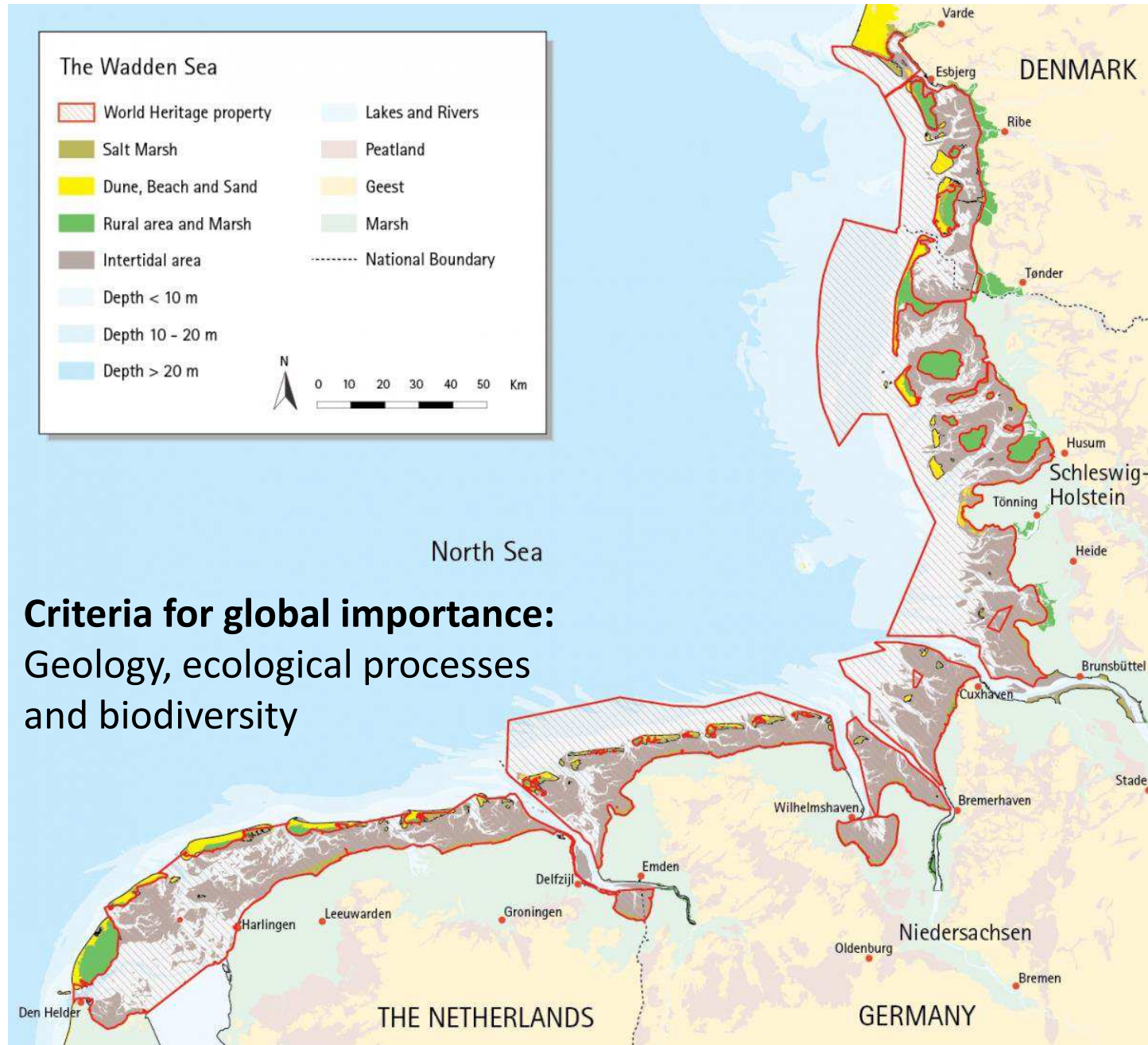
*“The landscape and the cultural heritage of the Wadden Sea is world class.”*



# World Heritage and Research Agenda



# World Heritage 2014



# Managing the World Heritage

- Wadden Sea World Heritage Strategy 2014-2020
- Sustainable Tourism in the Wadden Sea World Heritage Destination (STS 2014)





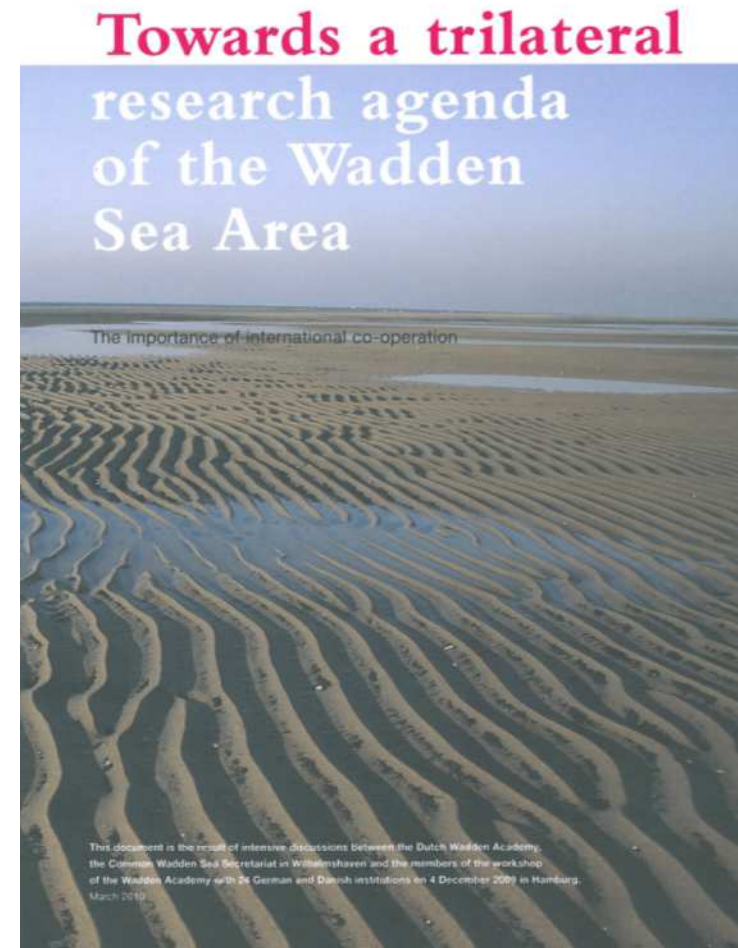
# Sylt-declaration 2010

- *”Support the establishment of a trilateral research platform directly connected with existing national networks. The platform will elaborate a trilateral agenda for policy-relevant research in consultation with the Board...”*

pkt. 41

# Trilateral Research Agenda

- Geoscience
- Ecologi
- Socio Economy
- Cultural History
- Climate and Water







# Some Results





# Awareness





# Restoring

Restoring the village of Ballum  
3 mill Euro  
2009-14

A.P. Møller Fonden



# Local Development

Developing  
the Tønder Marsh Area  
28 mill. Euro



Tønder kommune  
A.P. Møller Fonden  
Realdania 2016-2021

# Research Project

- ***Trade and social life in the seventeenth and eighteenth centuries***
  - A research and communication project based on Danish–Dutch contacts
  - Partners: Fisheries and Maritime Museum, University of Southern Denmark and Museum Sønderjylland.
  - Project period: 1/9 2015-31/8 2018
  - Supported by VELUX FONDEN by app. 530.000 Euros.

THE VELUX FOUNDATIONS

VILLUM FONDEN  VELUX FONDEN



# **”Trade and Social life”**

## **Two major, five minor projects**

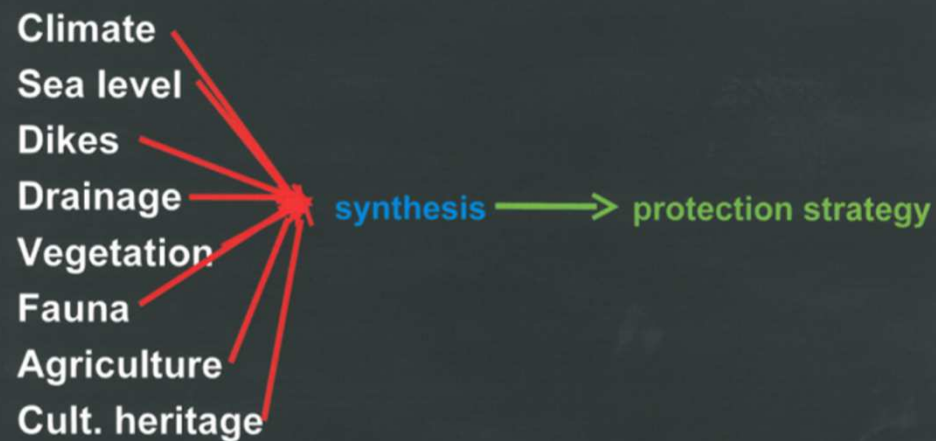
1. *Maritime-cultural exchange between Denmark and the Netherlands*
2. *The forgotten emigrants. Networks, integration and cultural identity in the Danish migrant communities in Amsterdam*
3. *Shipping and harbour structure on the northern Wadden Sea coast*
4. *Danish dress customs and Dutch influences.*
5. *Trade along the Schleswig Wadden Sea coast with particular attention to the emergence of Dutch tile.*
6. *A seaman's family's contact with Amsterdam.*
7. *Presentation of historical persons and their life-histories at museums and in the landscape.*

To sum up...

## What is important?

Climate	→	prognosis
Sea level	→	prognosis
Dikes	→	prognosis
Drainage	→	prognosis
Vegetation	→	prognosis
Fauna	→	prognosis
Agriculture	→	prognosis
Cult. heritage	→	prognosis

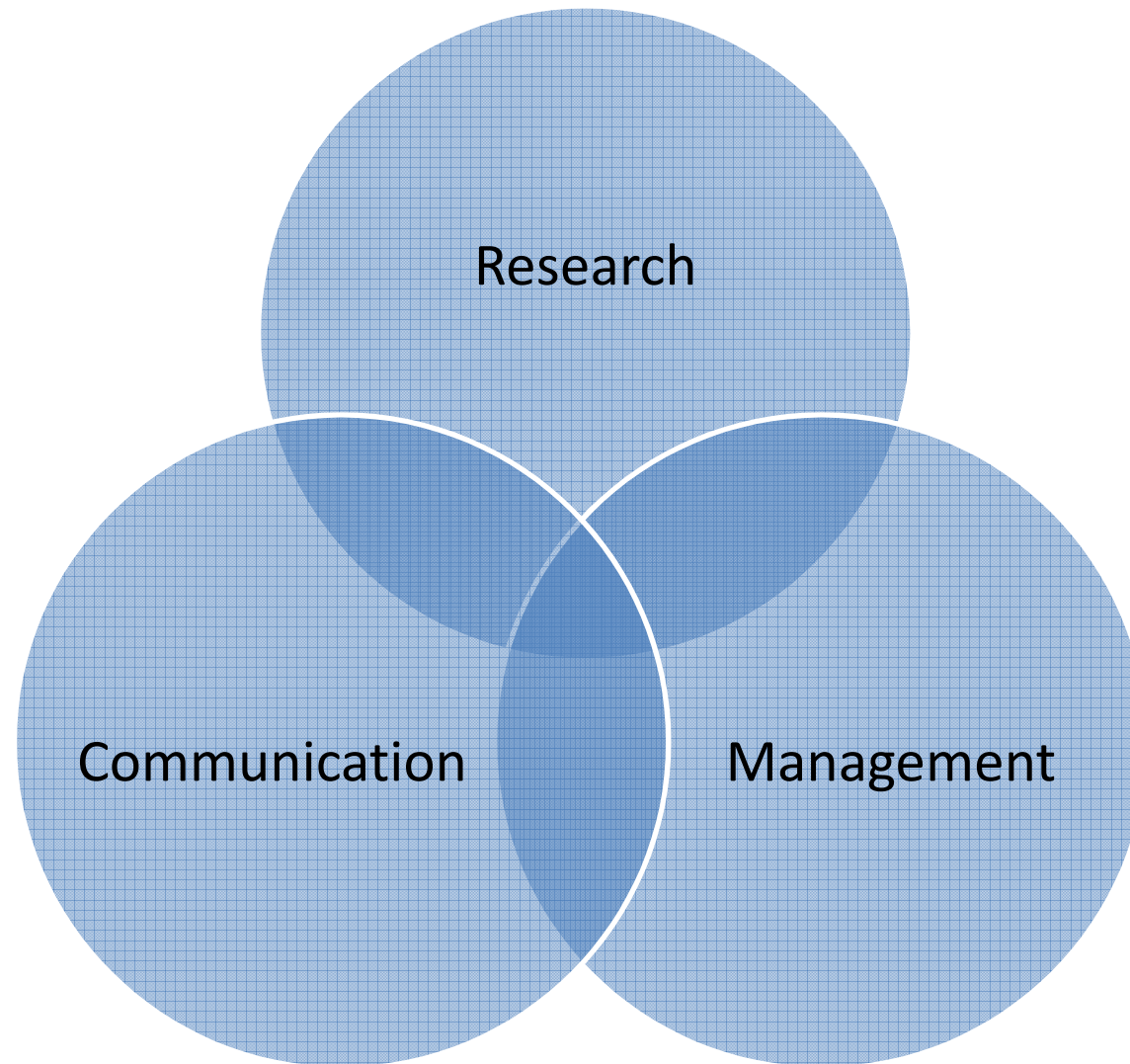
## What is important?



Inter-  
disciplinarity



# Cooperation



Not  
assimilation

# Thank you!

Mette Guldberg  
mg@fimus.dk

Denmark

Schleswig-  
Holstein

Hamburg

Lower Saxony

Germany

The Netherlands

