



Sustainable Business Park Lune Delta – an exclusive insight

BIS Bremerhavener Gesellschaft
für Investitionsförderung und Stadtentwicklung mbH
Annette Schimmel

November 2020

► Maritime City Bremerhaven



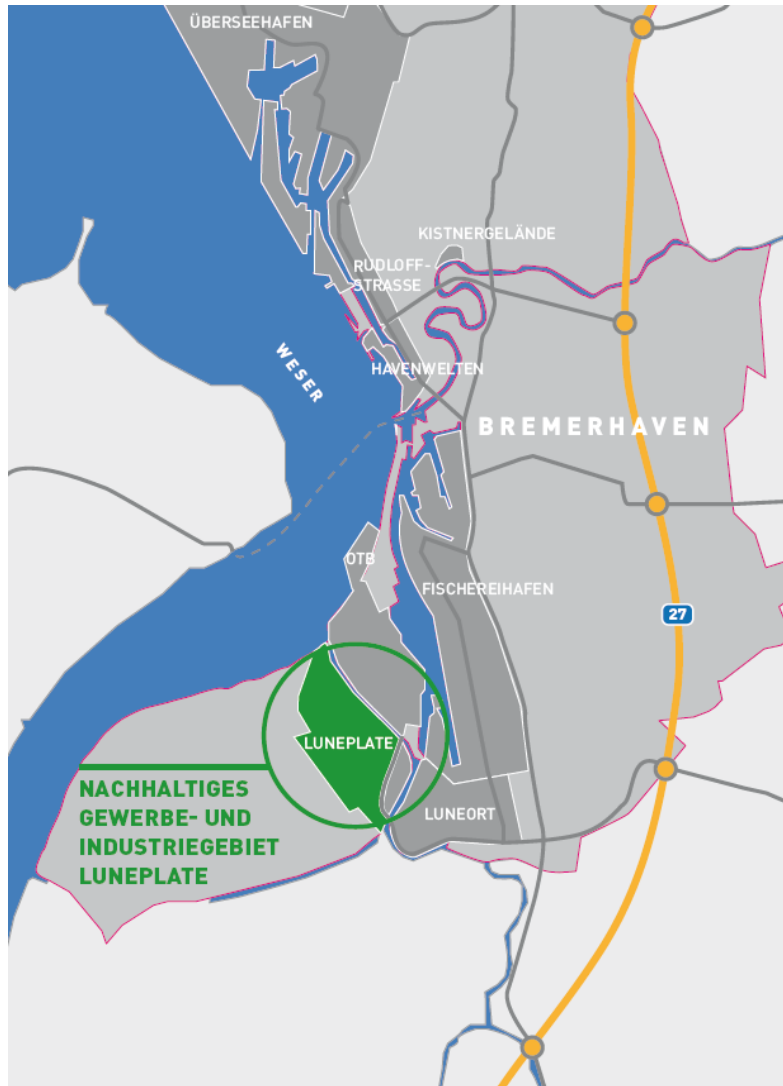
- Bremerhaven is the largest city on the German North Sea coast (population 119,000).
- Bremerhaven is situated at the Weser River and is part of the Federal State of Bremen.
- Both the past and the present of Bremerhaven as a business centre is marked by its port and maritime industry (shipbuilding, engineering, steel and plant construction). Bremerhaven is Germany's leading fish processing location.
- In the last 10 years Bremerhaven has developed into a nucleus for renewable energy sources with a focus on offshore wind.

► BIS: Pacemaker for the Green Economy



- support and funding of companies
- creation and establishment of new businesses with a focus on renewable energy
- networking
- planning of future oriented infrastructure,
- pilot projects with a focus on renewable energy
- development of the sustainable industrial estate Lune Delta

► Infrastructure: Luneplate



Industrial and
commercial site
Lune Delta – 150 ha

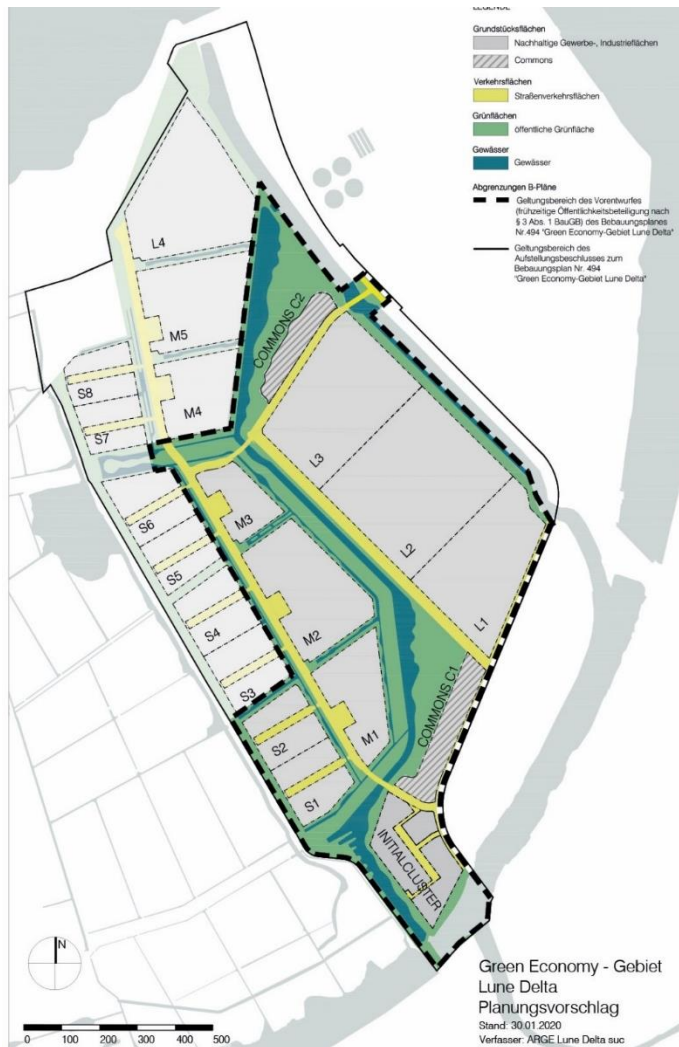
► Aerial photo Bremerhaven



Urban development concept Lune Delta



► Overview Lune Delta

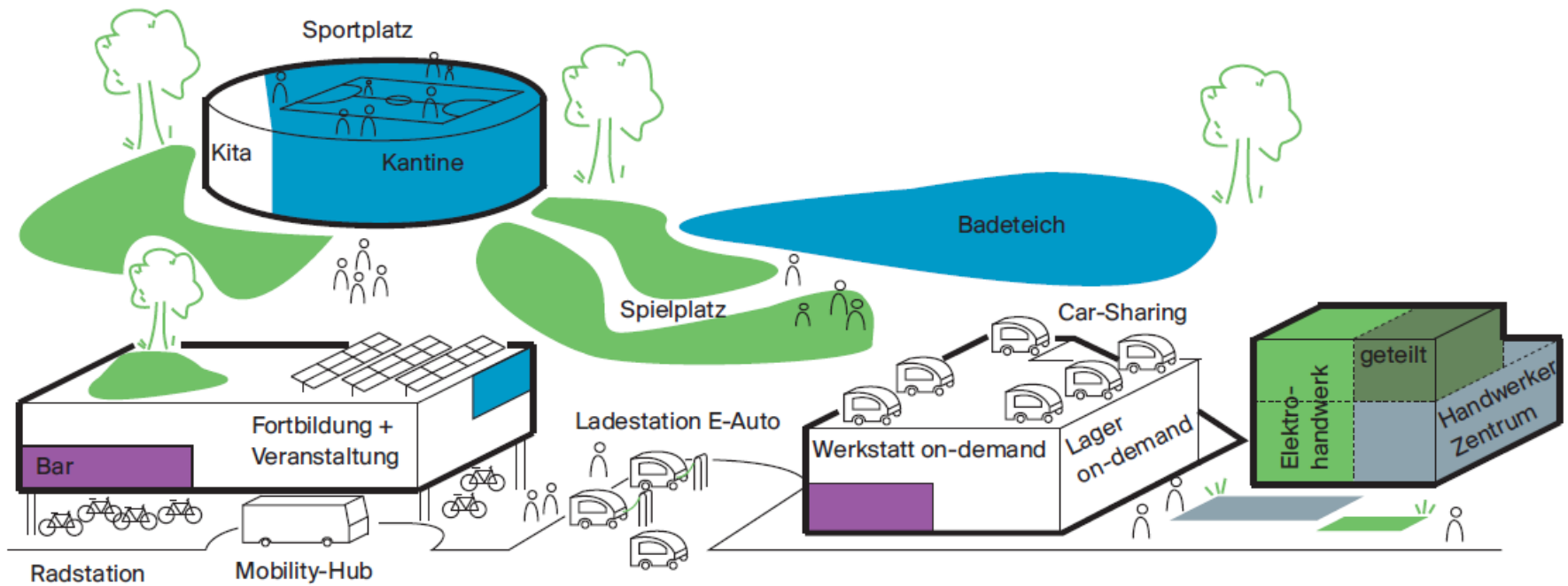


- Development from the South to the North
- Four construction phases
- Initial cluster
- Development plan that consider sustainability
- Commons (community facilities)
- Recreational facilities should contribute to an improvement of the work environment
- Structural implementation will start in 2022.

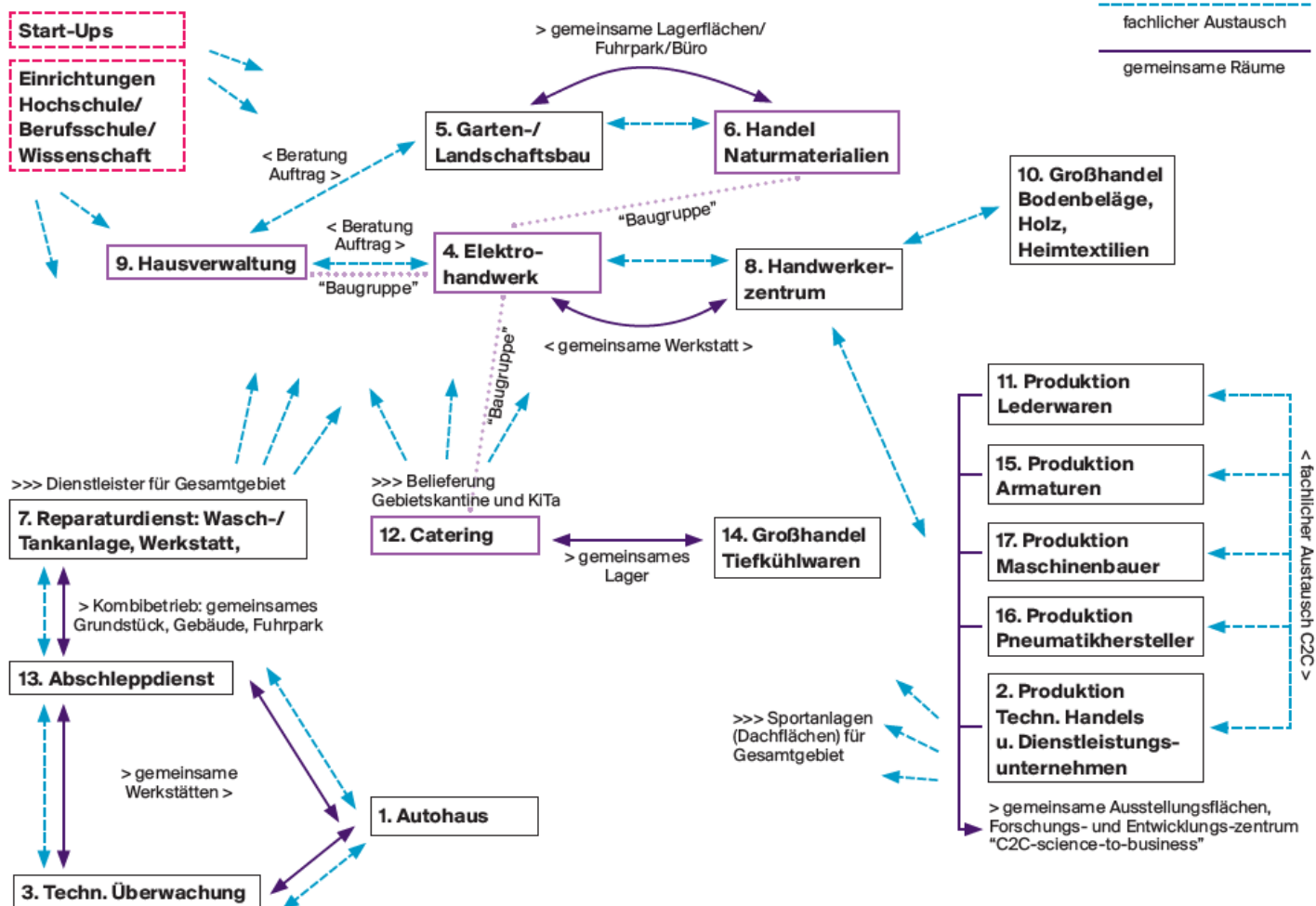
Guidelines for the development



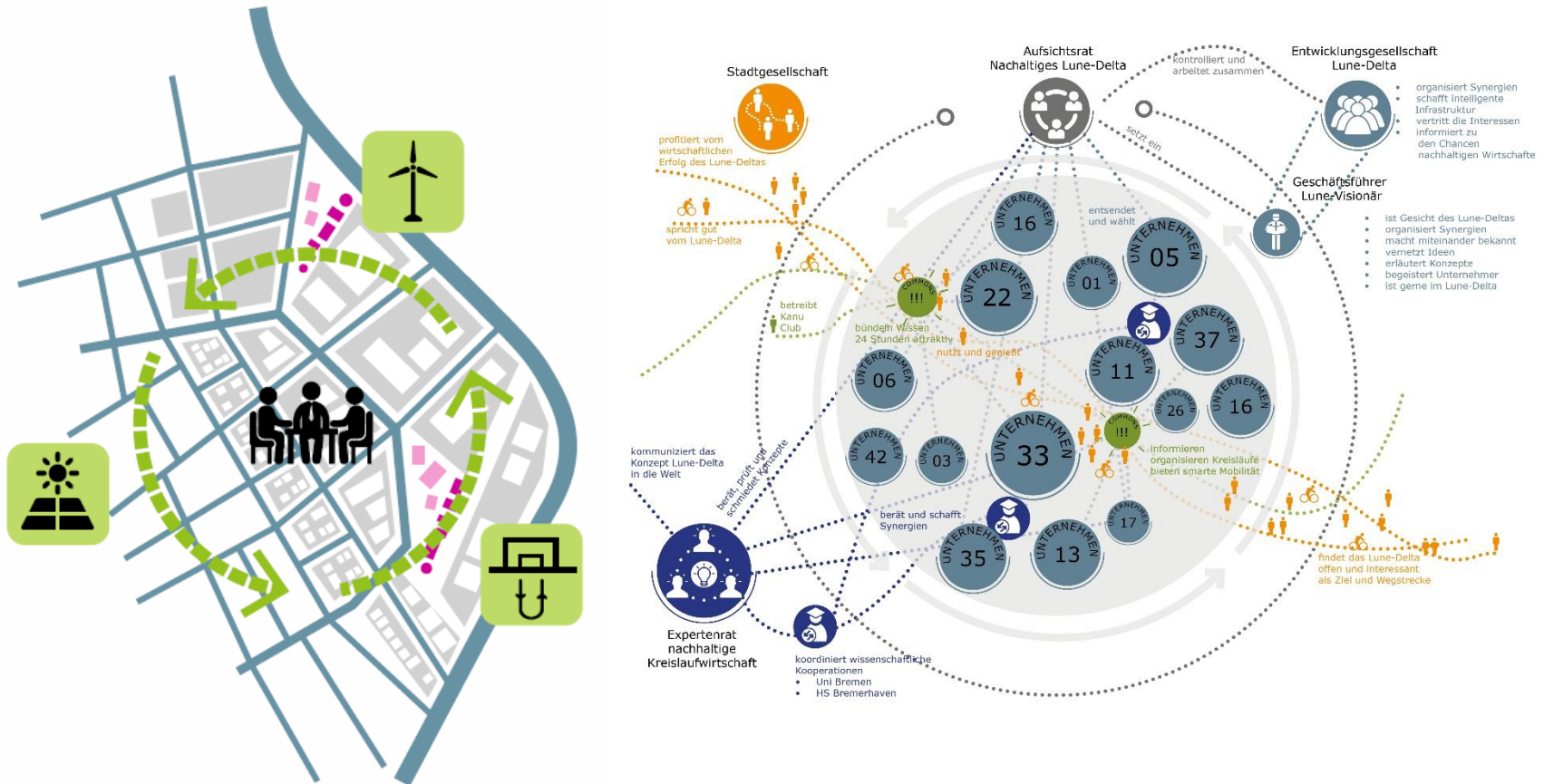
Vision: Sharing instead of owning



Vision: Synergies by cooperation



Local site management for orchestrating the requirements and needs



► DGNB certification: a systematic approach to sustainability

Sustainability is being measured by the following criterias:

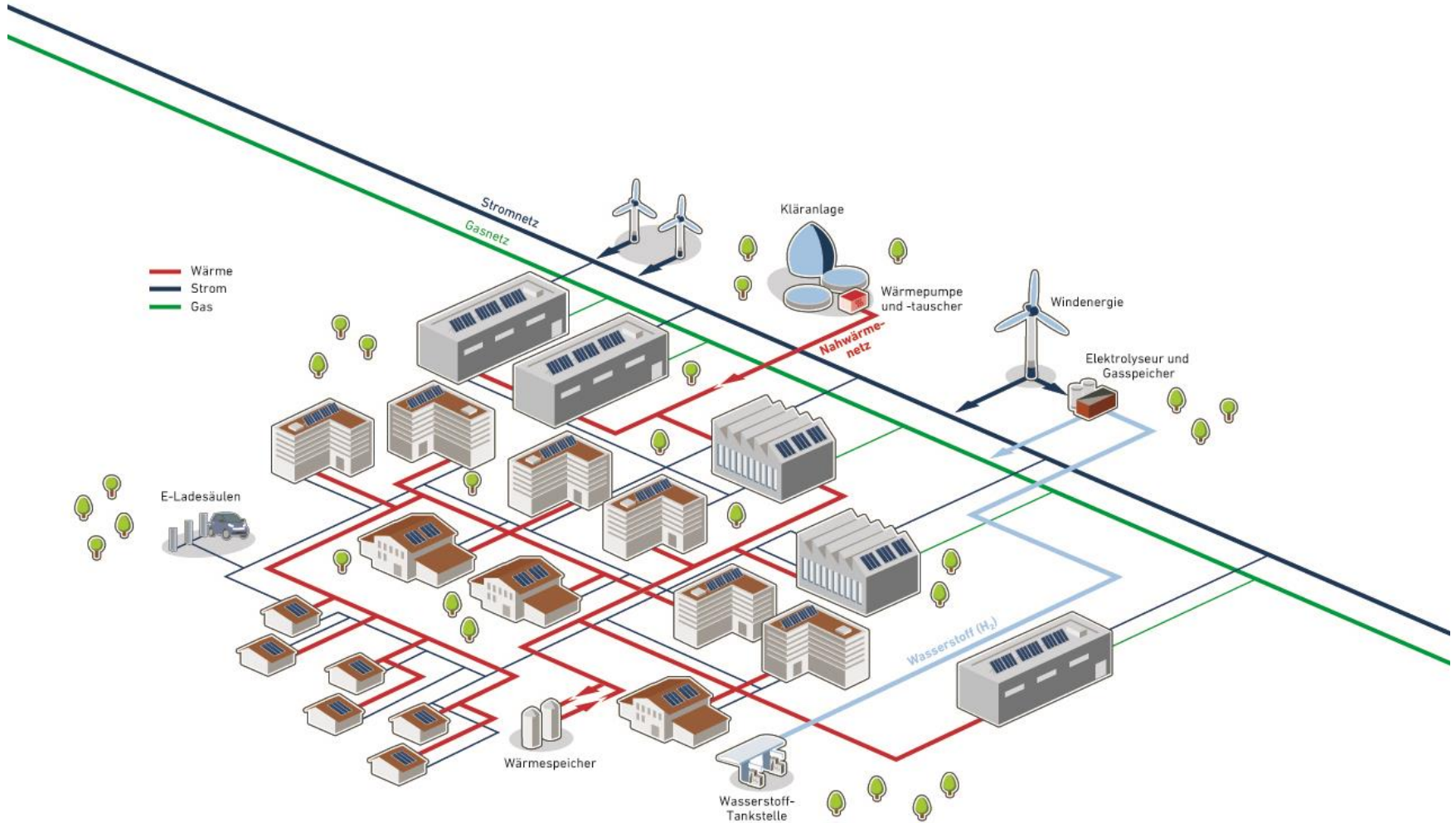
- ✓ ecological/economic quality
- ✓ Sozio-cultural/functional quality
- ✓ Technical and process quality



Sub-criteria are e.g.: biodiversity, energy, mobility, digitalization,

The DGNB Certificate is granted in Platinum, Gold or Silver. Lune Delta have been granted with the pre-certificate Platinum

Energy concept



▶ Development of pilot actions

Excellent location for development, test and production

- ▶ Excellent conditions for the renewable energy sector and for testing new mobility concepts
- ▶ Production and usage on site
- ▶ Fraunhofer IWES and University of Applied Sciences
- ▶ Support with funding by BIS



Political decision in November 2019: Building-up a competence center for hydrogen

- Investment in elektrolyseurs by Fraunhofer IWES
- Production and storage of hydrogen
- Development of applications



▶ Incubator Green Economy

- Sustainable, innovative commercial centre as an initial
- Workshops /bureaus/ common areas in different sizes, total area 3000m²
- multifunctional space for information and networking
- Cluster management will be first contact for companies



► Contact

BIS Bremerhavener Gesellschaft für
Investitionsförderung und
Stadtentwicklung mbH

Annette Schimmel

Am Alten Hafen 118

27568 Bremerhaven

Phone.: + 49 (0)471 946 46 620

Email: schimmel@bis-bremerhaven.de

www.bis-bremerhaven.de

www.green-economy-bremerhaven.de

