



BIO4ECO

Interreg Europe



European Union
European Regional
Development Fund

Actions and facts to provide the additional activities – BIO4ECO



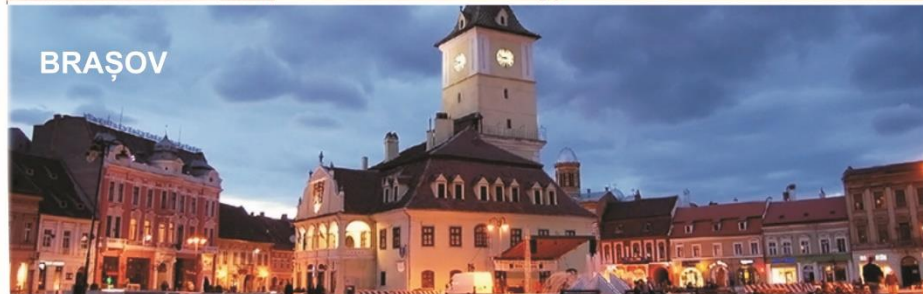
REGIONAL
DEVELOPMENT
AGENCY
CENTRU



ALBA



HARGHITA



BRAȘOV



MUREȘ



COVASNA



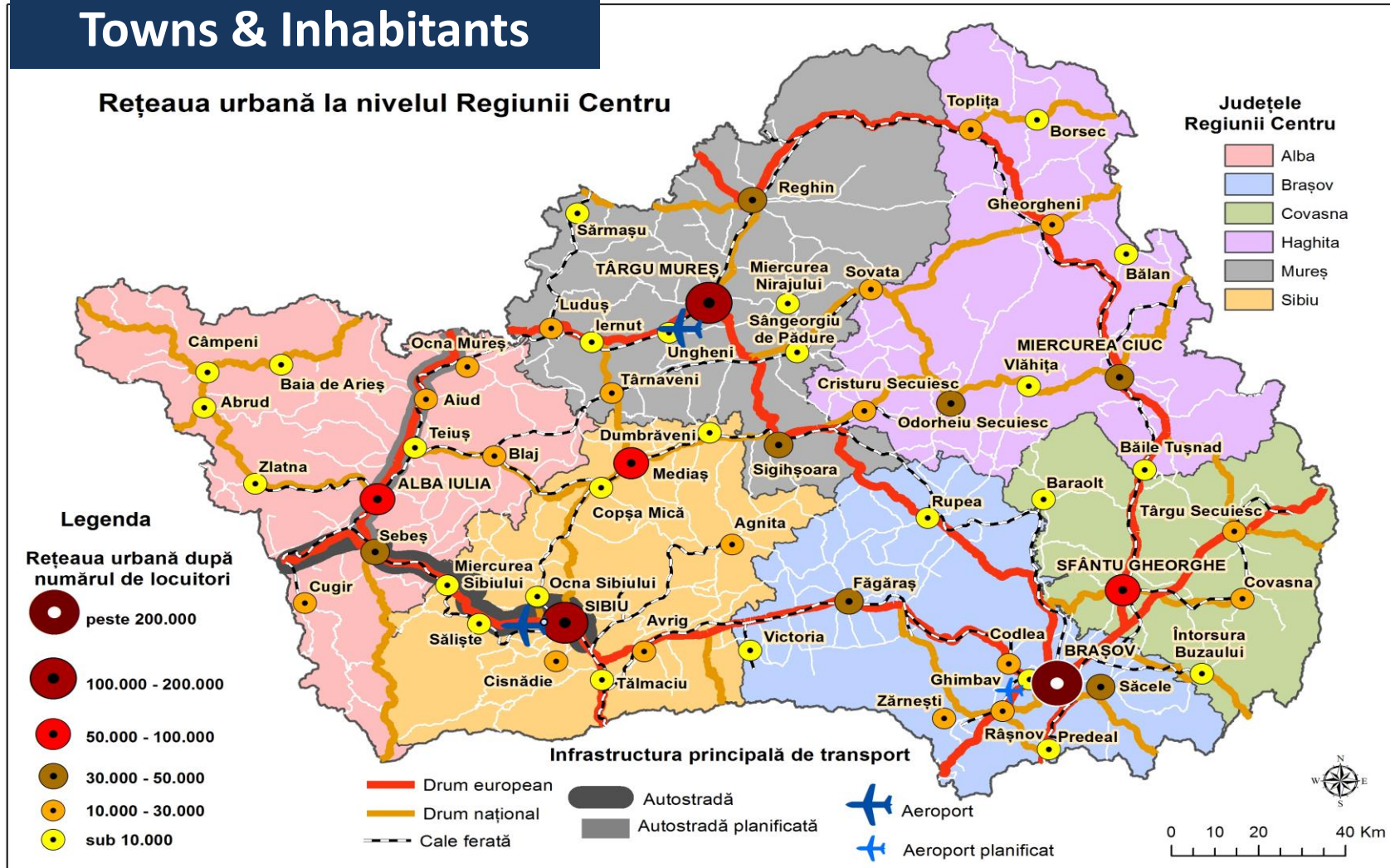
SIBIU



Centru Region: 6 counties, 34.100 kmp **Population:** 2,31 million inhabitants (2020)
Urbanization rate: 57,4% **Ethnic and linguistic diversity:** Romanians (61,2%),
Hungarians (28,6%), Roma (4,7%), Germans (0,4%)
GDP/capita: 20500 euro, in 2019; 3rd region at national level (66% EU)
Unemployment rate: 3,3% (december 2020)

Towns & Inhabitants

Rețeaua urbană la nivelul Regiunii Centru



- The list of urban settlements consists of **57 Local Administrative Units**: 20 “Municipality” and 37 are cities.
- 1 municipality exceeds 200,000 inhabitants, 2 have between 100,000 and 200,000 inhabitants, 3 have between 50,000 and 100,000 inhabitants, 7 cities have between 30,000 and 50,000 inhabitants, 18 cities have between 10,000 and 30,000 inhabitants and 26 cities have less than 10,000 inhabitants.
- 2 metropolitan areas: **Brașov** and **Țîrgu Mureș**

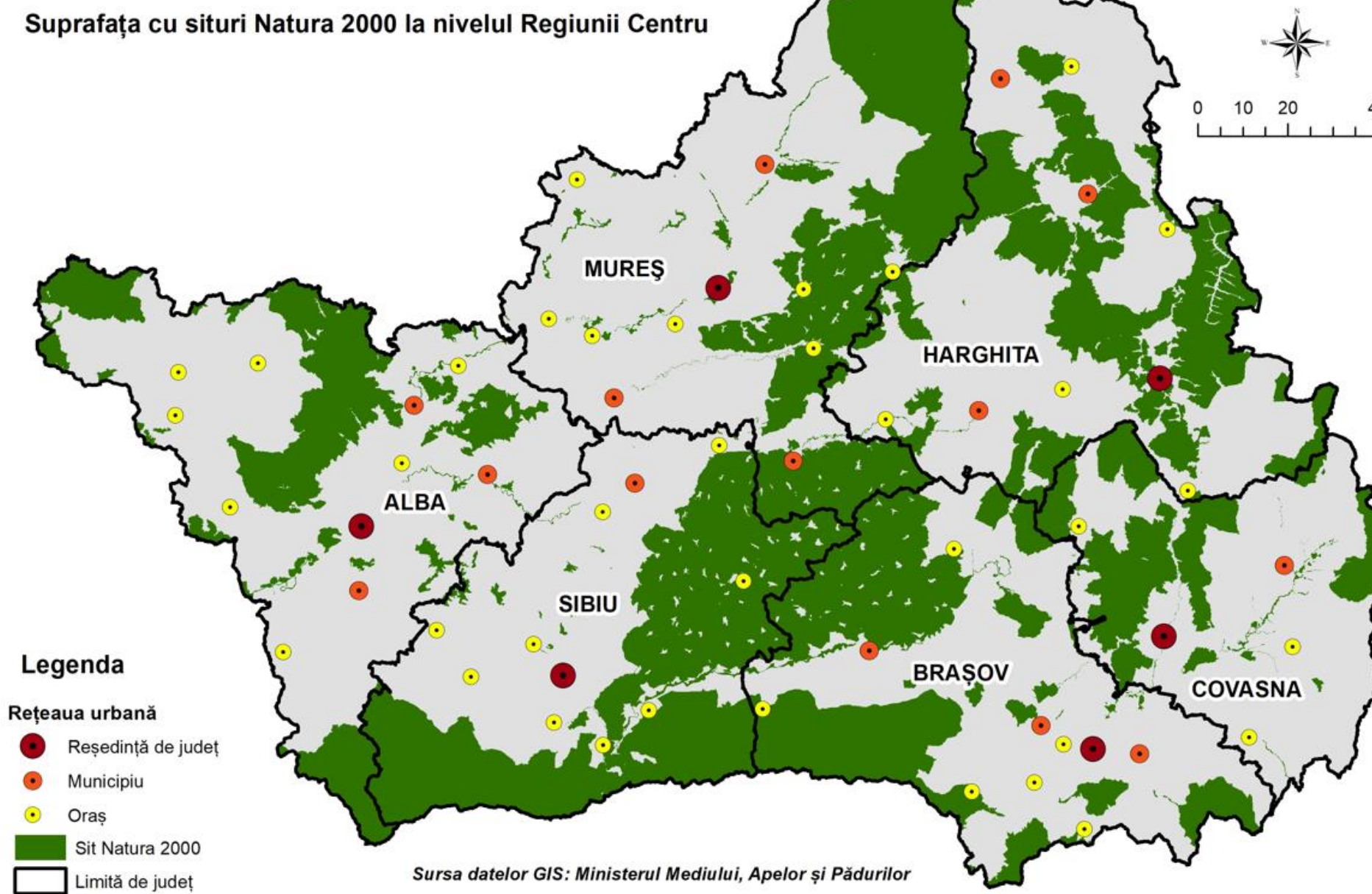
GREEN ASSETS OF CENTRU REGION

Sinca Veche (Braşov) - Ancient and Primeval Beech Forests of the Carpathians, UNESCO protected|: 350 ha

47% of the region's territory is covered by mountains
37% of the region's territory is covered by forests



Suprafața cu situri Natura 2000 la nivelul Regiunii Centru



The use of round wood in 2020 compared to 2019

	2019	2020	Differences (±) 2020 compared to 2019
unit of measure: thousand cubic meters			
The total volume of exploited Wood, out of which	17523	19792	+2269
Round wood (without bark) out of which	15922	18049	+2127
Wooden logs	8164	9192	+1028
Firewood	5626	6420	+794

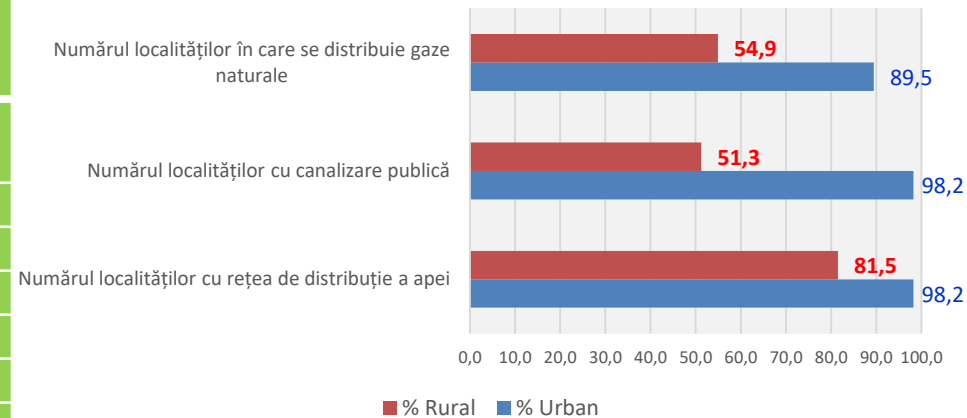
The main use of round wood was represented by wooden logs, in proportion of 50.9%, followed by firewood in proportion of 35.6%.

The amount of wood used for fire in Romania increased in 2020 compared to 2019 by almost 800.000 cubic meters.

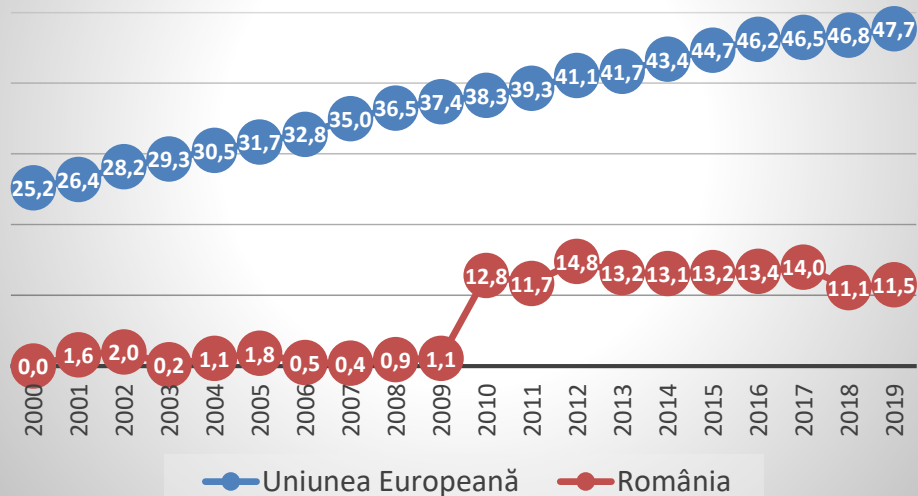
Environment infrastructure

Region/County	Share of the population connected to swage system (%) 2020	Share of the population benefitting of public water supply system (%) 2019
Regiunea CENTRU	68.3	77.6
Alba	61.0	81.1
Braşov	86.0	98.8
Covasna	61.0	57.8
Harghita	57.0	66.4
Mureş	53.8	63.9
Sibiu	81.5	82.2

Gradul de acoperire a localităților cu infrastructura tehnico - edilitară pe medii de rezidență la nivelul Regiunii Centru în 2020



Evoluția ratei de reciclare a deșeurilor municipale la nivelul României și Uniunii Europene în perioada 2000-2019 (%)



GLASS



PLASTIC



ORGANIC



METAL



PAPER



BATTERIES

10,1% of urban localities and
45,4% of the rural units are
not connected to gas supply
system

In the Centru Region there are 414 localities of which 162 are not connected to the gas supply network, 6 urban (one municipality and 5 cities) and 156 rural.

In 2020, a number of 425,337 people in the Centru Region were not connected to the gas supply network
-44153 inhabitants of urban areas (2,8%)
-381184 inhabitants of rural areas (35,82%)

In the households from the 162 localities in the Center Region that are not connected to the gas supply network, wood is mainly used as a fuel for heating and hot water.

Nord-Vest

Nord-Est

Centru

Vest

Sud-Est

Sud-Vest Oltenia

București-Ilfov

Sud-Muntenia

The need to include Strategic Domain 4 in the list of priority objectives for the period 2021-2027 is based on the analysis of the current situation on the most important indicators on environmental quality, resource efficiency, needs identified at regional level, together with structures partnerships created for the elaboration of RDP Center 2021-2027, and having as reference the obligations assumed by Romania at international, European and national level regarding: climate change, energy efficiency, use of renewable energy sources.

Specific priorities

P.4.1 Increasing the quality of the environment in urban and rural settlements in the Central Region

4.1.1 Environmental infrastructure and technical-municipal services

4.1.2 Increasing the quality of the environment in urban areas and suburbs and also in areas affected by historical pollution

P.4.2 Increasing the efficiency of energy and other material resources use

4.2.1 Energy efficiency in public and residential buildings

4.2.2 Intelligent energy systems, based on low energy consumption and increased use of RES and alternative fuels

4.2.3. Increasing the capacity of public and private actors to contribute to the transition to circular economy

P.4.3 Protecting and conserving regional biodiversity

P.4.4 Reducing the effects of climate change and preventing natural hazards

OUR VISION TOWARDS A GREENER REGION

Regional Development Plan 2021-2027, RIS Centru 2021-2027

Regional partners in planning and programming 2021/2027

Regional Planning Committee 43 member organizations (6 county working groups, 7 thematic working groups)

Elaboration of PDR Centru 2021/2027
Monitoring PDR Centru 2014/2020

Our vision for 2021/2027 is for the Centru Region to become a cleaner region, attractive to its inhabitants and tourists, with a competitive economy based on knowledge and innovation in which caring for the environment and the rational and sustainable use of resources is the goal of every citizen.



Regional Innovation Consortium - 39 member organizations: clusters, companies, universities, administration

Development, monitoring and implementation of RIS3 2014/2020
RIS3 update 2021/2027

Our vision for RIS3

The Centru Region consolidates and capitalizes on its innovation potential, adopts changes in the technological and industrial paradigm and makes intelligent and sustainable use of regional specificities.



OUR VISION TOWARDS A GREENER REGION

Elaboration in partnership of regional planning documents 2021-2027

Regional Development Plan Centru (RDP)

Strategic areas of development

1. Territorial development, sustainable urban development
2. Economic competitiveness, research and development and innovation
3. Human resources, social inclusion, employment and health
4. Environment, energy efficiency and climate change
5. Tourism and cultural heritage
6. Rural development, agriculture and forestry

Regional Smart Specialization Strategy (RIS3)

Smart specialisation Areas

- Automotive and mechatronics industry
- Aeronautical industry
- The agri-food sector
- Forestry, wood processing, furniture
- Textile, Clothing and Leather Industry
- IT and creative industries
- Health
- Sustainable built environment
- Tourism



NEW INSTRUMENTS TO FACILITATE GREEN TRANSITION FOR ROMANIAN REGIONS

Regional OP Centru Region
1,18 Billion Euro FEDR

OP Transport
8,3 Billion FEDR/CF

Operational Program Just Transition
2.1 Billion Euro JTF

Operational Program Sustainable Development
4,6 Billion Euro FERD/FC

National Plan for Recovery and Resilience
29.2 billion Euro



ROP CENTRU 2021-2027

PRIORITIES	ERDF (mil euro)
Priority 1 - A competitive region through innovation and dynamic enterprises for a smart economy	229.99
Priority 2 – A digitized region	116.38
Priority 3 - A region with environmentally friendly communities	198.71
Priority 4- A region with cities developing sustainable urban mobility	198.71
Priority 5 - An accessible region	168.03
Priority 6 – An educated region	77.83
Priority 7 – A region with sustainable tourism	21.26
Priority 8 – An attractive region	119.80
Priority - 9 - Technical Assistance	50.88

Priority 3 ROP 2021-2027

PO 2 , SO b(i) Promoting energy efficiency measures

Operations of an indicative nature:

Support to improve the energy efficiency of residential buildings (MFHs) in the Centru Region, including structural consolidation measures based on the level of exposure and vulnerability to identified risks, demonstration projects and support measures contributing to increasing the share of renewable sources in the energy consumption of these buildings;

Support to improve the energy efficiency of public buildings from Centru Region, including public buildings identified as historic monuments, structural consolidation measures based on the level of exposure and vulnerability to identified risks, demonstration projects and support measures contributing to increasing the share of renewable sources in the energy consumption of these buildings.

Support & capacity building activities/measures for public authorities (measure for supporting the public authorities in preparing/drafting "deep renovation" projects proposals, good practices guidelines, solutions etc on energy efficiency & deep renovation

Targets - 2029

Residential buildings
(RCO18): **3800**
apartments
public buildings (RCO19):
72600 sqm rehabilitated



Priority 4 ROP Centru

PO 2 , So 3.b (vii) Improving the protection of nature and biodiversity, green infrastructure in particular in urban areas and reducing pollution

Operations of an indicative nature:

conservation of urban biodiversity and promote green infrastructure in urban areas / functional urban areas in the Central Region (such as interventions aiming the *reconfiguration of the street network, green corridors, revitalisation of degraded spaces, investments aimed at revitalizing degraded spaces and capitalizing them as green spaces, areas of social or economic utility*) and / or blue infrastructure in urban areas / functional urban areas from Centru Region (such as banks/shore works in urban areas, urban corridors, etc.), including technological innovations that support green infrastructure / blue infrastructure;

Construction/ modernization / extension of green spaces in urban areas / functional urban areas in the Central Region

Reconversion and refunctionalization of degraded, vacant or unused lands and areas within the urban areas of Centru Region

Capacity building measures for the potential beneficiaries in planning the activities, elaboration of plans / strategies / territorial studies at FUA/ ZM level, based on local urban plans, mapping the needs of an area - in correlation with the Urban Integrated Development Strategies

Targets - 2029

Surface of green/blue infrastructure(RCO 36)
70 ha



Priority 4 ROP 2021-2027

PO2, So 4.b (viii) Promoting sustainable multimodal urban mobility

- *Development of clean urban infrastructure: development of sustainable urban mobility paths, cycling infrastructure, pedestrian planning, the introduction of bike-sharing systems, monitoring systems, etc., including existing publicly owned utility infrastructure.*
- *Developing and optimising public transport through investments in rolling stock and related transport infrastructure;*
- *Development of alternative fuel infrastructures;*
- *Development of urban mobility management systems such as traffic management systems, mobility applications, park & ride systems, etc.*

Targets - 2029

Capacity of environmentally friendly rolling stock for collective public transport – 15.000 (RCO 57)

150 electric buses

Km bicycle lanes – 160 km (RCO58)

20 charging stations (RCO59)

5 digitalised mobility systems (RCO 60)

PO1 A more competitive and smart Europe, through promotion of intelligent and innovative economic transformation



National Integrated Plan on Energy and Climate Change 2030

Share of energy from renewable sources TIME	2015	2016	2017	2018	2019
GEO (Labels)					
European Union - 27 countries (from 2020)	17,84	18,03	18,47	18,91	19,73
European Union - 28 countries (2013-2020)	16,73	16,98	17,48	18,01	18,88
Euro area - 19 countries (from 2015)	16,45	16,70	17,27	17,77	18,58
Romania	24,79	25,03	24,45	23,88	24,29

Actions to be done 5th call

- Evolution of the demand for forest biomass due to COVID
- Inventory of current and future measures to suport EE based on forest biomass
- Models of heathing systems addapted to different tipologies of communities
- Enhance the capacity of local communities to identify sustainable tehnologies

Planned evolution of RES share the final energy consumption in heathing and cooling sectors

Grafic 4 - Traiectoria orientativă a ponderii energiei din surse regenerabile în consumul final brut de energie în sectorul încălzire și răcire, 2021 - 2030



Sursă: Calcule Deloitte pe baza informațiilor transmise de Grupul de lucru interinstituțional PNIESC și a recomandărilor COM

The final gross energy consumption from renewable sources used in heating and cooling sectors could increase by 24% between 2021-2030, taking into account availability of biomass resources (especially wood for fire and agricultural wastes), respecting the sustainability criterias.



BIO4ECO

Interreg Europe



European Union
European Regional
Development Fund

PP10 -Regional Development Agency Centru

12 Decebal St. Alba Iulia

510093

Alba County Romania

office@adrcentru.ro

www.adrcentru.ro