

# Integrated Action Plan for Urban Resilience

## *Katowice – Załęże*

SUMMARY



## *Table of contents*

INTRODUCTION .....	3
WHAT IS URBAN RESILIENCE?.....	3
RESILIENCE IN KATOWICE .....	3
CURRENT SITUATION .....	4
KATOWICE.....	4
ZAŁĘŻE – URBAN LIVING LAB .....	5
WORKING FOR URBAN RESILIENCE IN URBAN LIVING LABS .....	7
URBACT LOCAL GROUP.....	7
EXPERTS .....	7
PROBLEMS .....	8
VISION.....	9
PATHWAYS.....	9
THE VISION OF URBAN RESILIENCE .....	10
PATHWAYS TO URBAN RESILIENCE .....	12
SOCIAL ASPECT .....	12
ECONOMIC ASPECT.....	12
SPATIAL ASPECT.....	13
INSTITUTIONAL ASPECT .....	16
SCHEDULE OF THE PROJECTS’ IMPLEMENTATION.....	17
MONITORING AND ASSESSING THE PROGRESS TOWARDS URBAN RESILIENCE .....	18
IMPLEMENTATION.....	18
RESPONSIBILITY ASSIGNMENT MATRIX.....	19
MONITORING.....	22
EXPERIMENTING FOR URBAN RESILIENCE.....	25
CONCLUSION .....	29

## INTRODUCTION

### *WHAT IS URBAN RESILIENCE?*

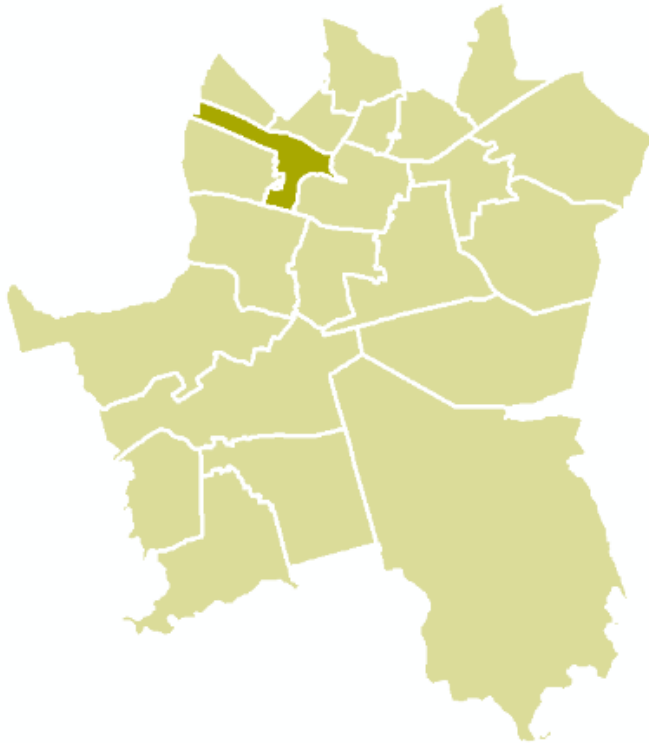
- Urban resilience is the capacity of urban systems, communities, individuals, organisations and businesses to recover, maintain their function and thrive in the aftermath of a shock or a stress, regardless of its impact, frequency or magnitude.
- “Loosely defined, resilience is the capacity of a system – be it a community, a landscape, a region, an economy – to live with change, whether incremental or abrupt, expected or surprising. Resilience is about turning ‘crisis’ into opportunity. Resilience provides flexibility and options”. (Folke 2014, p.56 - Reflections on people and the biosphere)
- The ability of a social, ecological or socio-ecological system and its component parts to anticipate, absorb, accommodate, or recover from the effects of a hazardous event in a timely and efficient manner, including through ensuring the preservation, restoration, or improvement of its essential basic structures and functions, its capacity for self-organization, and the capacity to adapt to stress and change. (IPCC, 2014)

### *RESILIENCE IN KATOWICE*

Katowice (area: 16,460 ha, population: 285,353), the capital of Silesian Voivodeship, the heart of the Upper Silesian Agglomeration of over 2 million people and the main city of the “Greater Katowice” Metropolis, is one of the most important economic, academic and cultural centres in southern Poland. Due to its qualities such as the advantageous location, well-educated human capital, cultural infrastructure and numerous events, educational and administrative infrastructure, and services of a high standard, the city is widely recognisable on the international cultural and investment maps. As every city, it also suffers from problems of a social, economic and spatial nature. The answer to this is the process of complex revitalisation. In the city of Katowice the process is based on a Local Revitalisation Programme which formulates the vision, the aims, the objectives and projects for deprived areas.

The concept of “Resilience” is rather a new one for the city of Katowice. It is treated as one step further than revitalisation. It works like “vaccination” not “antibiotics”, which means that we

have to focus on those skills and abilities which allow citizens to cope with future shocks and stresses by themselves.



**The Integrated Action Plan is formulated for ZALEŻĘ, which is one of Katowice’s districts (population: 9927 [3.43% of the city], area: 284.76 ha [1.73% of the city]). The area is located in the northern part of Katowice, neighbouring the city centre, along with Gliwicka Street.**

The basis of the Integrated Action

Plan was prepared by the Urbact Local Group. It was then further developed by two experts: a leading expert and a spatial one.

## CURRENT SITUATION

### *KATOWICE*

Katowice, being a post-industrial city now functioning as a business hub within the functional area, deals with **social, economic and infrastructural** problems.

When it comes to the **economic** aspect, the city is taking on the challenge of further innovative and technological development, instruments to foster local entrepreneurship; the **social** aspect – how to counter the decrease in population (how to persuade commuters to become citizens?), how to overcome poverty in some districts, how to overcome social inequalities, and last but not least regarding **infrastructure** – how to adapt post-industrial sites to create new functions coherent with the surroundings. During the project work we focused on the elaboration of potential activities allowing the city to adapt to the ongoing changes such as industrial transition.

The main issues for Katowice are:

- Progressing demographic slump of Katowice City.
- Social inequalities endangering sound development of the city.
- Migration of young educated people from the city (fluctuation in Poland and abroad).
- Mining and metallurgic manufacturing and its negative social and environmental consequences (in the province).
- A large number of empty commercial premises and small amount of well-developed streets which could be representative of Katowice city.
- Disappearance of small craftsmanship.
- Small amount of innovative projects.

The city development is based on the following documents:

The **Local Development Strategy** (December 2015) is aimed at sustainable development in the following areas: life quality, metropolitanism, entrepreneurship and transportation. The strategic assumption is to become an innovative, intelligent, integrated and international city by the year 2030, by completing various priorities, aims and projects.

Another important document is Katowice's **Local Revitalization Programme**. This programme formulates the vision and the aims which are set to "revive" the area, selected on the basis of a holistic diagnosis.

### ***ZAŁĘŻE – URBAN LIVING LAB***

The Katowice Urban Living Lab is Załęże – one of the 22 districts of the city. The district is included in the Katowice Local Revitalization Programme. Załęże has a population of 9927 [3.43% of the city] and it covers an area of 284.76 ha [1.73% of the city]. The area is located in the northern part of Katowice, neighbouring the city centre, along with Gliwicka Street. The whole district may be divided into two functional "zones" (housing – the northern zone and industrial – the southern one). Some of the buildings within the area are under the restorer's protection. The area was indicated as a deprived one on the basis of a quantitative socio-economic diagnosis extended by a qualitative expert assessment referring to the environmental and infrastructural aspects.

The results of the diagnosis indicated that the area suffers from several stresses:

- Depopulation
- The concentration of unemployment (including people under the age of 25 and long-term unemployment) (firstly - due to the collapse of the local economic base (mainly the Kleofas coal mine and Baildon Steelworks, secondly – as a result of the fact that the citizens living in the district, due to its strong industrial heritage, don't have the adequate skills and qualifications to fulfil today's labour market needs,
- Concentration of poverty
- Ageing society
- Crime
- Domestic violence
- Robberies
- Low-standard housing
- Post-industrial areas
- Air pollution
- Water pollution

## WORKING FOR URBAN RESILIENCE IN URBAN LIVING LABS



The **main objective** of the integrated action plan is to extend the revitalisation process into the resilience process and to find solutions on how to engage local citizens to work together for their district.

An **important goal** was also to create such solutions that are feasible and may be incorporated into current or future activities and projects implemented in the city, by local authorities and other partners.

### ***URBACT LOCAL GROUP***

To achieve the aims at the beginning of the project, City Hall organized an initial meeting about Urbact and the Resilient Europe project. Representatives of the organization and inhabitants of Załęże were invited to the meeting. During the meeting the representative of National Urbact Point explained how the Urbact project works and explained the main features of the Integrated Action Plan, Urban Living Lab and Urbact Local Group. Then the Resilient Europe project was presented (objectives, financing, partners). During the meeting, Participants had an opportunity to ask questions about the project and also (what was very important) to propose other potential members of the ULG.

The Urbact Local Group was officially established on **12.09.2016** – which was also the first Urbact Local Group Session. The Katowice ULG involves the work of **19 members**. They are representatives of: Education, Local Government, Social, NGO's, Police, District Council, County Job Centre, Citizens, and City Hall. During the third session, ULG members chose a representative to be leader of the group. **All ULG sessions were held at the Urban Living Lab** (besides the first and last meeting), each time in a different location.

What is worth mentioning is the fact that at every meeting the presence of the members did not decrease. What's more, as a result of the ULG meetings, most of the local organisations have integrated and coordinated their tasks and aims.

### ***EXPERTS***

As mentioned above, for Katowice the resilience concept is quite new. To keep the work on the right track, we asked some specialists to assist us in the whole process.

For this reason the following were involved:

- Aldo-Vargas Tetmajer – Urbact National Contact Point – facilitator - (from the beginning of the project)
- Prof. Adam Drobniak – University of Economics – ‘resilience’ expert (from November 2016)
- Prof. Michał Stangel – Silesian University of Technologies – spatial expert (from March 2017)

During the whole project, the experts helped the ULG to understand the concept of resilience (social, spatial, institutional attributes) and the required elements of working on an URBACT project.



## PROBLEMS

The main topic of the first three meetings was to define the problems of the district. To cope with this during the first meeting, a “Problem Tree” method was used. The ULG working together decided that:

- **The most important social-economic problems were:** residents’ mentality, low self-esteem, unwillingness to search for work, lack of appropriate qualifications resulting in: unemployment, low income, poverty, poor living conditions, addiction, and the concentration of families with many problems.
- **The most important functional and spatial problems were:** lack of free places for active recreation and sport, lack of a central square in Załęże, lack of understanding for environmental problems, too intense traffic, and a diverse ownership structure causing problems with renovation of residential buildings.



During the second meeting, ULG was still working on problems and the identification of resources and needs in three aspects: material, communication and personal. The ULG also decided that representatives of local business should be included in the work.

At the last meeting about problems, ULG summarized all the effects of analysis of social, economic and spatial problems.

**Most of the problems in Załęże are of a social nature. The critical indicated problem was social anomie.**



*Anomie is a social condition in which there is a disintegration or disappearance of the norms and values that were previously common to the society.*

## **VISION**

During one of the meetings, Prof. Drobniak gave a short lecture about the resilience concept and economic, social, spatial, and institutional attributes of resilience.

During the workshop, to develop the vision, the lead expert asked the ULG members the following questions: which social, economic, spatial and institutional factors deepen the vulnerability of Załęże? and which social, economic, spatial and institutional factors can build Załęże's resilience?. Every participant voted for the three most important, in their opinion, vulnerability factors and the three most important potentials. What's more, ULG members indicated on the map of the district vulnerable areas and those which have significant resilience potential.

ULG members decided that the vision will consist of four aspects:

- social
- economical
- spatial
- institutional

## **PATHWAYS**

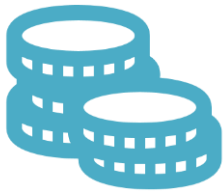
The next step within the project (to make Załęże more resilient) involved working on possible ways to achieve the vision. In order to prepare more coherent pathways, representatives of local business were invited. To develop the pathways, the lead expert asked the ULG members

questions, such as: What actions or projects should achieve the objectives? The answers were written on small pieces of paper, displayed later on. The next step was to read all the answers and then decide together which objectives will be achieved by that project. By using the method of visual moderation, a wide variety of projects was created.

## THE VISION OF URBAN RESILIENCE



Załęże district residents will have an active and diverse attitude towards change which will lead to socio-cultural integration. Their professional qualifications and skills will be required by employers, while their self-learning orientation and flexibility to labour market changes will make it easy to obtain a satisfactory income.



The entrepreneurship of Załęże inhabitants is the condition for diversifying the economic specialization of the district, and it will serve as an example of a successful economic change in the area.



Załęże will offer convenient living conditions, along with well-maintained and friendly public spaces. The district's attractiveness will be strengthened by a suitable and fast transportation infrastructure with the city centre, by the availability of various means of transport and road connections.



The involvement of the community and various institutions of the District will be reflected by numerous projects and events attracting all of Katowice's inhabitants. This commitment will also be an asset to raise resources and will build the desired rank of Załęże district in the city.

SOCIAL ASPECT	
Vision	Załęże district residents will have an active and diverse attitude towards change which will lead to socio-cultural integration. Their professional qualifications and skills will be required by employers, while their self-learning orientation and flexibility to labour market changes will make it easy to obtain a satisfactory income.
Objective 1 (CL1)	Strengthening social capital for initiatives that change Załęże's image and promote active attitudes towards change
Objective 2 (CL2)	Increasing the interest of Załęże residents in the acquisition of professional competences in lifelong learning
ECONOMIC ASPECT	
Vision	The entrepreneurship of Załęże inhabitants is the condition for diversifying the economic specialization of the district, and it will serve as an example of a successful economic change in the area.
Objective 1 (CG1)	Stimulating creative and enterprising attitudes among children and adolescents in Załęże
Objective 2 (CG2)	Providing a place to test business and ideas
SPATIAL ASPECT	
Vision	Załęże will offer convenient living conditions, along with well-maintained and friendly public spaces. The district's attractiveness will be strengthened by a suitable and fast transportation infrastructure with the city centre, by the availability of various means of transport and road connections.
Objective 1 (CM1)	Cooperation with owners and property managers to improve housing conditions
Objective 2 (CM2)	Creation of representative places based on a system of public spaces and green spaces
Objective 3 (CM3)	Making Załęże a distinctive district of Katowice in terms of active urban mobility: tram - bus - bicycle - roller - walking
INSTITUTIONAL ASPECT	
Vision	The involvement of the community and various institutions of the District will be reflected by numerous projects and events attracting all of Katowice's inhabitants. This commitment will also be an asset to raise resources and will build the desired rank of Załęże district in the city.
Objective 1 (CI1)	Institutionalization of the cooperation of residents and stakeholders interested in building the resilience of Załęże
Objective 2 (CI2)	Creation of a positive "climate change for Załęże" in Katowice

## PATHWAYS TO URBAN RESILIENCE

### SOCIAL ASPECT

objective	CL1. Strengthening social capital for initiatives that change Załęże's image and promote active attitudes towards change
projects	<b>PL1.1. Załęże social club</b> - supporting and promoting Silesian traditions and organizing meetings for the local community about the history and traditions of Załęże
	<b>PL1.2. Meetings and workshops for residents:</b> <ul style="list-style-type: none"> <li>- training how to stimulate activity</li> <li>- promoting the talents of inhabitants</li> <li>- with people who have achieved success</li> <li>- thematic by interest: sport, entertainment, education</li> <li>- for parents on how to be a good example for their children</li> </ul>
	<b>PL1.3. Foreign language classes for children</b>
	<b>PL1.4. Modern teaching aids for the development of passion</b>

objective	CL2. Increasing the interest of Załęże residents in the acquisition of professional competences in lifelong learning
projects	<b>PL2.1. Internships in companies</b>
	<b>PL2.2. Professional profiles relevant to the needs of the local labour market (Załęże / Katowice)</b>
	<b>PL2.3. Advisory and Vocational Education Centre – in cooperation with local companies</b>
	<b>PL2.4. Tours to companies and institutions for children and youth</b>

### ECONOMIC ASPECT

objective	CG1. Stimulating creative and enterprising attitudes among children and adolescents in Załęże
projects	<b>PG1.1. Workshops/classes in teaching entrepreneurship and creativity:</b> <ul style="list-style-type: none"> <li>- support for science in industry "Tech experience for the young"</li> <li>- after-school computer programming, graphic [new technologies] classes</li> <li>- programs for talented young people in cooperation with entrepreneurs</li> <li>- Entrepreneurship education - "Entrepreneurship Path" - additional business classes about writing business plans, self-presentation and career path</li> <li>- Seniors and new technologies</li> </ul>
	<b>PG1.2. Work activation workshops:</b>

objective	CG1. Stimulating creative and enterprising attitudes among children and adolescents in Załęże
	<ul style="list-style-type: none"> <li>- with local leaders, celebrities, entrepreneurs - successful people: promoting good examples for young people</li> <li>- "My first business" workshops for young people aged 16-19 - creating ideas</li> <li>- "workshops / events" for young people in companies - e.g. run in English, German</li> <li>- a competition for children's ideas for creative leisure activities, awarded with prizes by specific entrepreneurs</li> </ul>

objective	CG2. Providing a place to test business and ideas
projects	<b>PG2.1. "Załęże LAB"</b> – a place of education, integration and stimulation of creativity for children, adolescents, adults and seniors, with the business incubator and developed cooperation with entrepreneurs, schools and universities

### *SPATIAL ASPECT*

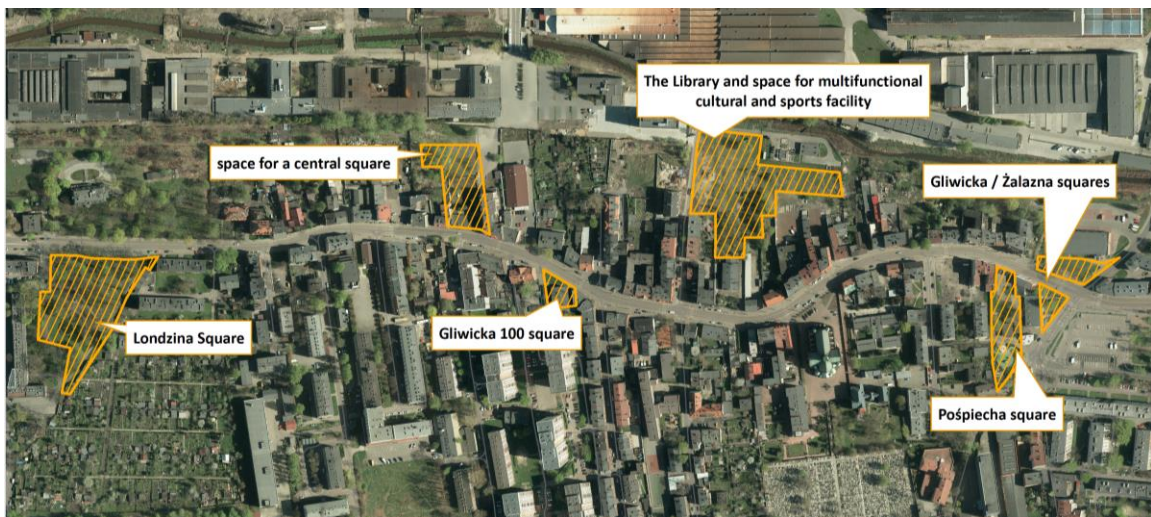
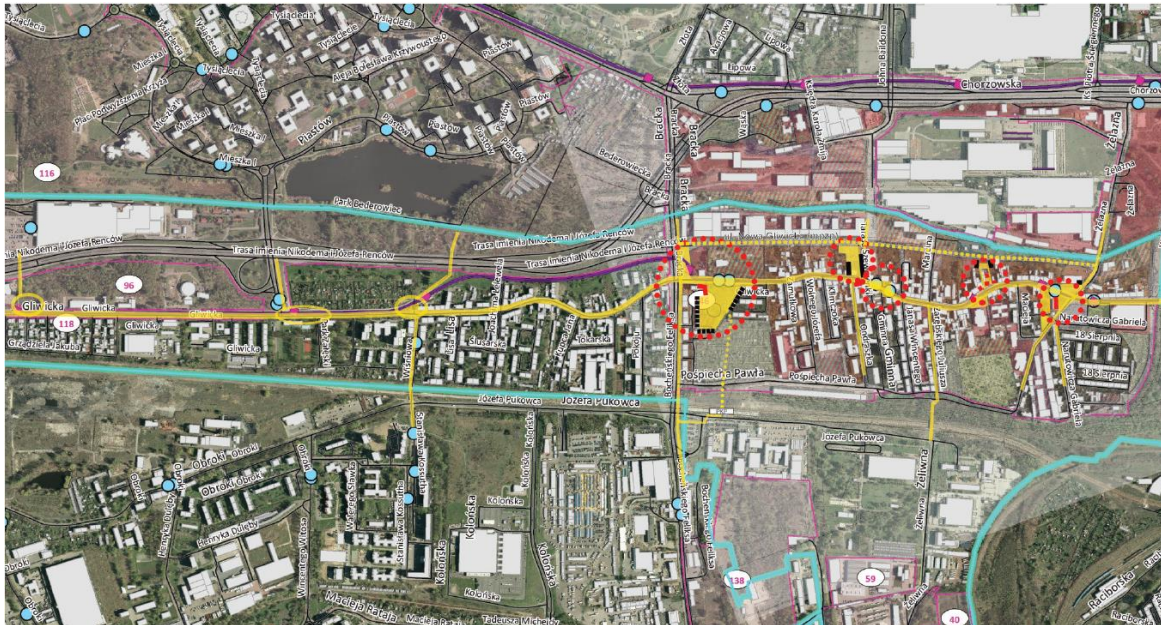
objective	CM1. Cooperation with owners and property managers to improve housing conditions
projects	<p><b>PM1.1. Take care of your surroundings</b> - competition for neighbourhood initiatives - involvement of residents to refresh staircases, care for lawns, flowers, places in front of buildings, common playground construction, esthetics of property (e.g. Gliwice 91). Supported by property managers, housing associations, cities, NGOs and companies in the delivery of paints, plants, tools.</p> <p><b>PM1.2. Task force for cooperation at Katowice City Hall – property managers from Załęże.</b></p> <p><b>Task:</b></p> <ul style="list-style-type: none"> <li>- use of undeveloped areas for parking, markets, garages</li> <li>- support local property managers' initiatives</li> <li>- ensure stability and rationality in making administrative decisions for property managers</li> <li>- Cooperation for Załęże development, including: planning renovations of public spaces, roads, replacement of infrastructure networks, planning new investments, a heating system area (the fight against smog) and modernization of buildings (elimination of coal)</li> <li>- service cost optimization (reduction of maintenance fees)</li> <li>- Working out debt by doing work for property managers</li> </ul>

<b>objective</b>	<b>CM2. Creation of representative places based on a system of public spaces and green spaces</b>
<b>projects</b>	<b>PM2.1. Londzina Square - Pear Square - a place of recreation</b>
	<b>PM2.2. Central Square – Szewczeni Street, venue for concerts, picnics</b>
	<b>PM2.3. The Old Town</b> - restoration and promotion of the quarter: Wiśniowa - Lisa - Wyplera, and restoration of destroyed buildings, e.g. Pokoju Street (multi-family houses built for the miners and their families). Renovation of historic buildings by all owners and property managers - highlighting their historical value - creating a district similar to Nikiszowiec
	<b>PM2.4. Public space and green space system</b>
	<b>PM2.5. Indoor swimming pool in the Załęski Park</b>
	<b>PM2.6. Załęże representative places: “Interesting places in Załęże”</b>

<b>objective</b>	<b>CM3. Making Załęże a distinctive district of Katowice in terms of active urban mobility: tram - bus - bicycle - roller - walking</b>
<b>projects</b>	<b>PM3.1. A network of bicycle routes from Bocheńskiego Street to the city centre; creating safe bicycle paths that don't collide with traffic, including:</b> <ul style="list-style-type: none"> <li>- creating a bicycle path or allowing bikes to travel along the sidewalk along Gliwicka Street</li> <li>- a bicycle path along the tram line (undeveloped areas) and Nowogliwicka Street</li> <li>- Providing the desired surface of bicycle paths, including improved surface of streets and sidewalks - including side streets from Gliwicka Street</li> </ul>
	<b>PM3.2. Technical facilities promoting cycling:</b> <ul style="list-style-type: none"> <li>- bicycle racks and shelters at enterprises, companies, institutions</li> <li>- city bike rental network</li> </ul>

## ***Spaces of resilience potential***

During the Resilient Europe workshops the LGU lead by the spatial expert chose 5 places of importance in case of creation people friendly public spaces. There were specified short and long term measures to be undertaken not only by the city but also other parties. The process of choosing the projects was preceded by the survey while the citizens were asked about their opinion and preferences.



## INSTITUTIONAL ASPECT

objective	CI1. Institutionalization of the cooperation of residents and stakeholders interested in building the resilience of Załęże
projects	<p><b>PI1.1. Association for the Development of Załęże.</b> Cooperation platform: Residents – District Council - City of Katowice - NGO – Business. Inter-sectoral cooperation agreement for Załęże development. "Local Leader" responsible for initiating changes in Załęże.</p> <p>Tasks:</p> <ul style="list-style-type: none"> <li>- Developing a system of shared benefits from cooperation</li> <li>- Initiating and consulting important changes in the district between institutions</li> <li>- Initiating meetings for residents: with representatives of institutions operating in the area of Załęże, representatives of the City in order to develop good practice of cooperation, exchange of experiences, directions of development for the district</li> <li>- Consulting tasks financed from the City budget</li> <li>- informing each other about events, projects</li> <li>- maintaining a database of offers: job / employment / internship / practice / apprenticeship / socially useful work in companies and institutions operating in Załęże</li> <li>- Information about changes in Załęże in local media</li> </ul> <p><b>PI1.2. Załęże social club</b> - an institution which allows the development of the interests of Załęże inhabitants. It has facilities for educational, socio-cultural meetings. Also addressed to seniors and mothers / children with children - cf. project: "Załęże - my little homeland" - "Załęże Club" (CL1)</p>

objective	CI2. Creation of a positive "climate change for Załęże" in Katowice
projects	<p><b>PI2.1. Cyclical events in the district</b>, including "Załęże Days" - a cyclical "flagship" social and cultural event. It is based on joint organization with the participation of institutions, business entities, citizens' initiatives. – cf. project CL1. Organization of regular district events</p> <p><b>PI2.2. Załęże Promotional campaign</b> - creating a joint promotional line for events / initiatives / changes in Załęże with the participation of residents, NGOs, the District Council, the City of Katowice, the business sector. Presenting Załęże as a good neighbourhood to live in, where interesting changes take place. Also:</p> <ul style="list-style-type: none"> <li>- Promoting Załęże among other districts of Katowice</li> <li>- creating a website promoting new initiatives, accomplished tasks, new ideas</li> <li>- Integrated Action Plan promotion</li> <li>- Posters in institutions and companies informing about events and projects in Załęże</li> </ul> <p><b>PI2.3. Councillor of Załęże</b> - Załęże constituency creation</p> <p><b>PI2.4. Cultural, artistic, social and educational projects</b> – ex. Neighbour Day, Earth Day - with the support of municipal institutions, artistic communities, NGOs, business – cf. CL1. Organization of regular district events</p>



## SCHEDULE OF THE PROJECTS' IMPLEMENTATION

Projects	Year	2018	2019	2020	2021	2022	after 2022
	PL1.1. Załęże social club						
PL1.2. Meetings and workshops for residents							
PL1.3. Foreign language classes for children							
PL1.4. Modern teaching aids for the development of passion							
PL2.1. Internships in companies							
PL2.2. Professional profiles relevant to the needs of the local labour market (Załęże / Katowice)							
PL2.3. Advisory and Vocational Education Centre – in cooperation with local companies							
PL2.4. Tours to companies and institutions for children and youth							
PG1.1. Workshops/classes in teaching entrepreneurship and creativity							
PG1.2. Work activation workshops:							
PG2.1. "Załęże LAB"							
PM1.1. Take care of your surroundings							
PM1.2. Task force for cooperation at Katowice City Hall – property managers from Załęże.							
PM2.1. Londzina Square - Pear Square - a place of recreation							
PM2.2. Central Square – Szewczenki Street, venue for concerts, picnics							
PM2.3. The Old Town							
PM2.4. Public space and green space system							
PM2.5. Indoor swimming pool in the Załęski Park							
PM2.6. Załęże representative places: "Interesting places in Załęże"							
PM3.1. A network of bicycle routes from Bocheńskiego Street to the city centre; creating safe bicycle paths that don't collide with traffic, including							
PM3.2. Technical facilities promoting cycling:							
PI1.1. Association for the Development of Załęże							
PI2.1. Cyclical events in the district, including "Załęże Days"							
PI2.2. Załęże Promotional campaign							
PI2.3. Councilor of Załęże							
PI2.4. Cultural, artistic, social and educational projects							

## MONITORING AND ASSESSING THE PROGRESS TOWARDS URBAN RESILIENCE

### *IMPLEMENTATION*

The Multidimensional processes of building resilience in Załęże district is also included in the Multi-stakeholder analysis. It is aimed at identification of the crucial roles in implementation of the Local Action Plan.

To each stakeholder a particular function was assigned:

- **Implementation (I)** - providing organizational, technical, financial and information resources along with decision making and control over an action/project
- **Participation (P)** - providing organizational, technical, financial and information resources towards implementation of an action/project
- **Consultation (C)** - substantive consultation, consultancy of the thematic and implementation scope of individual actions.

## RESPONSIBILITY ASSIGNMENT MATRIX

Institutions	Załęże Citizens	Załęże District Council	Association for the Development of Załęże and the Załęże social club <sup>1</sup>	Advisory and Vocational Education Centre <sup>2</sup>	City of Katowice	Municipal organizational units	Public institutions	Schools	NGO	Parish	Business
<b>Projects</b>											
<b>PL1.1. Załęże social club</b>	I	P		C	P	P	C	C	P	C	C
<b>PL1.2. Meetings and workshops for residents</b>	P	P	I	C	P	P	C	P	P	C	C
<b>PL1.3. Foreign language classes for children</b>	P	P	C	C	I	C	C	P	C	C	C
<b>PL1.4. Modern teaching aids for the development of passion</b>	P	P	C	C	I	C	C	P	C	C	C
<b>PL2.1. Internships in companies</b>	P	C	C	I	C	P	C	P	C	C	P
<b>PL2.2. Professional profiles relevant to the needs of the local labour market (Załęże / Katowice)</b>	C	C	C	P	I	P	C	P	C	C	P
<b>PL2.3. Advisory and Vocational Education Centre – in cooperation with local companies</b>	C	C	C		I	P	C	C	C	C	P
<b>PL2.4. Tours to companies and institutions for children and youth</b>	C	C	C	I	C	C	C	P	C	C	P
<b>PG1.1. Workshops/classes</b>	C	C	C	P	I	P	C	P	P	C	P

<sup>1</sup> The Association expected to be created as a result of Resilience projects

<sup>2</sup> The Centre expected to be created as a result of Resilience projects

Institutions	Załęże Citizens	Załęże District Council	Association for the Development of Załęże and the Załęże social club <sup>1</sup>	Advisory and Vocational Education Centre <sup>2</sup>	City of Katowice	Municipal organizational units	Public institutions	Schools	NGO	Parish	Business
Projects											
in teaching entrepreneurship and creativity											
PG1.2. Work activation workshops:	C	C	C	P	C	I	C	P	P	C	P
PG2.1. "Załężański LAB"	P	P	P	P	I	P	P	P	P	C	P
PM1.1. Take care of your surroundings	I	C	C	C	P	P	C	C	P	C	P
PM1.2. Task force for cooperation Katowice City Hall – property managers from Załęże.	P	P	P	C	I	P	P	C	P	C	C
PM2.1. Londzina Square - Pear Square - a place of recreation	C	C	C	C	I	P	C	C	C	C	C
PM2.2. Central Square – Szewczenki Street, venue for concerts, picnics	P	C	P	C	I	P	C	P	P	C	P
PM2.3. The Old Town	P	C	P	C	I	P	C	P	P	C	P
PM2.4. Public space and green spaces system	P	C	P	C	I	P	C	P	P	C	P
PM2.5. Indoor swimming pool in the Załęski Park	C	C	C	C	I	C	C	C	C	C	C
PM2.6. Załęże representative places: "Interesting places in Załęże"	P	P	I	C	P	C	C	P	P	C	P

Institutions	Załęże Citizens	Załęże District Council	Association for the Development of Załęże and the Załęże social club <sup>1</sup>	Advisory and Vocational Education Centre <sup>2</sup>	City of Katowice	Municipal organizational units	Public institutions	Schools	NGO	Parish	Business
<b>Projects</b>											
<b>PM3.1. A network of bicycle routes from Bocheńskiego Street to the city center; creating safe bicycle paths that don't collide with traffic, included</b>	P	C	P	C	I	P	C	P	P	C	P
<b>PM3.2. Technical facilities promoting cycling:</b>	P	C	P	C	I	P	C	P	P	C	P
<b>PI1.1. Stowarzyszenie na Rzecz Rozwoju Załęża</b>	I	P	X	P	P	P	P	P	P	P	P
<b>PI2.1. Cyclical events in the district, including "Załęże Days"</b>	P	P	I	P	P	P	P	P	P	P	P
<b>PI2.2. Załęże Promoting campaign</b>	C	C	P	C	I	C	C	P	P	C	P
<b>PI2.3. Councilor of Załęże</b>	P	I	P	C	C	C	C	C	C	C	C
<b>PI2.4. Cultural, artistic, social and educational projects</b>	P	P	I	C	C	C	C	P	P	P	P

## MONITORING

The process of monitoring projects strengthening the resilience of Załęże will follow the proposed scheme:

- **Quantitative and qualitative information:** quantitative data refer to indicators describing the socio-economic situation of the district, while qualitative data include a list of actions and resilience projects of the district;
- **Frequency of collected information:** for the qualitative information – yearly; for the quantitative data – regarding the scope of required data – it is planned to be collected in 2019 and 2020;
- **Reporting** – there are planned – annual reports in the form of Monitoring Reports of the Integrated Action Plan for Załęże, for which the City Development Department will be responsible in cooperation with entities implementing actions and projects strengthening the resilience of Załęże. Monitoring reports can also be the source material for promotional actions and information about Załęże.

The scope of quantitative information for cross-sectorial monitoring of activities for strengthening the resilience of the Załęże area (2019 and 2022)

Dimensions of monitoring	Indicators	Data source
Depopulation	<ul style="list-style-type: none"> <li>- Population of Katowice and Załęże - situation as of 31.12 (2019 and 2022)</li> <li>- Number of people in productive age – in Katowice and Załęże - situation as of 31.12 (2019 and 2022)</li> </ul>	Department of Citizens' Affairs
Poverty and social exclusion	<ul style="list-style-type: none"> <li>- Number of families on social benefit – in Katowice and Załęże - (2019 and 2022)</li> <li>- Number of families living in poverty – in Katowice and Załęże (2019 and 2022)</li> <li>- Number of families suffering from dysfunction in the educational-care model – in Katowice and Załęże (2019 and 2022)</li> </ul>	City Social Welfare Centre in Katowice
Labour market	<ul style="list-style-type: none"> <li>- Number of unemployed registered in the County Labour Office – in Katowice and Załęże (2019 and 2022)</li> <li>- Number of unemployed women – in Katowice and Załęże (2019 and 2022)</li> <li>- Number of unemployed under the age of 25 - in Katowice and Załęże (2019 and 2022)</li> <li>- Number of long-term unemployed – in Katowice and Załęże (2019 and 2022)</li> <li>- Number of unemployed with no qualifications and experience – in Katowice and Załęże (2019, 2022)</li> <li>- Number of unemployed on social benefit (2019, 2022)</li> </ul>	County Labour Office  City Social Welfare Centre in Katowice

Dimensions of monitoring	Indicators	Data source
Ageing population	<ul style="list-style-type: none"> <li>- Number of people under the age of 14 – in Katowice and Załęże (2019, 2022)</li> <li>- Number of people over the age of 65 – in Katowice and Załęże (2019, 2022)</li> </ul>	Department of Citizens' Affairs
Crime	<ul style="list-style-type: none"> <li>- Number of crimes – in Katowice and Załęże (2019, 2022)</li> <li>- Number of robberies – in Katowice and Załęże (2019, 2022)</li> <li>- Number of acts of hooliganism – in Katowice and Załęże (2019, 2022)</li> <li>- Number of occurrences of domestic violence – in Katowice and Załęże (2019, 2022)</li> </ul>	Department of Crisis Management
Entrepreneurship	<ul style="list-style-type: none"> <li>- Number of businesses – in Katowice and Załęże (2019, 2022)</li> <li>- Number of persons conducting an economic activity – in Katowice and Załęże (2019, 2022)</li> </ul>	The REGON register

In order to assess the effectiveness of undertaken activities, an evaluation process of the Integrated Action Plan should be carried out. It should be based on the same indicators as were used in the *Socio-economical diagnosis* which allowed us to designate the deprived areas within the city of Katowice. The collected information dated 2019 and 2022 in relation to the data from 2013 will enable comprehensive evaluation of complex changes. It will give an answer as to whether the aims have been achieved or are being achieved.

Objectives	Indicators to assess the effectiveness of achieving objectives	Value in 2013
<b>PEOPLE</b>		
CL1. Strengthening social capital for initiatives that change Załęże's image and promote active attitudes towards change	Number of unemployed in Załęże, concentration ratio	1.75
	Number of families living in poverty in Załęże, concentration ratio	2.64
	Number of families suffering from dysfunction in the educational-care model in Załęże, concentration ratio	2.51
	Number of occurrences of domestic violence in Załęże, concentration ratio	1.96
	Number of unemployed on social benefit in Załęże, concentration ratio	2.98
CL2. Increasing the interest of Załęże residents in the acquisition of professional competences in lifelong learning	Number of unemployed women in Załęże, concentration ratio	1.81
	Number of unemployed with no qualifications and experience in Załęże, concentration ratio	2.19
	Number of long-term unemployed in Załęże, concentration ratio	2.03
<b>ECONOMY</b>		
CG1. Stimulating creative and enterprising attitudes among	Number of unemployed under the age of 25 in Załęże, concentration ratio	1.77
	Number of businesses in Załęże, concentration ratio	0.88

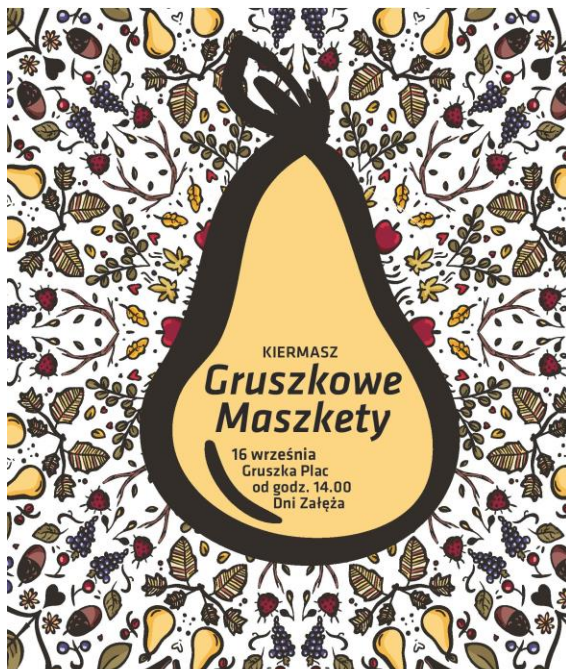
Objectives	Indicators to assess the effectiveness of achieving objectives	Value in 2013
children and adolescents in Załęże		
CG2. Providing a place to test business and ideas	Number of persons conducting an economic activity in Załęże, concentration ratio	0.87
<b>PLACES</b>		
CM1. Cooperation with owners and property managers to improve housing conditions	Depopulation in Załęże, concentration ratio	1.67
CM2. Creation of representative places based on a system of public spaces and green spaces	Number of renewed, created representative places in Załęże	n.d.
	Number of crimes in Załęże, concentration ratio	1.11
	Number of acts of hooliganism in Załęże, concentration ratio	1.33
CM3. Making Załęże a distinctive district of Katowice in terms of active urban mobility: tram - bus - bicycle - roller - walking	Number of robberies in Załęże, concentration ratio	1.47
	Depopulation in Załęże, concentration ratio	1.67
	Ageing in Załęże, concentration ratio	143
<b>INSTITUTIONS</b>		
CI1. Institutionalization of the cooperation of residents and stakeholders interested in building resilience of Załęże	Number of families on social benefits in Załęże, concentration ratio	2.18
CI2. Creation of a positive "climate change for Załęże" in Katowice	Number of people in productive age in Załęże, concentration ratio	1.01

It is assumed that two Evaluation Reports will be prepared– **mid-term in 2019 and post-project in 2023**. The reports will present 3 aspects:

1. Descriptive – a synthesis of the actions undertaken
2. Evaluative – the assessment of the plan’s effectiveness on the basis of the above mentioned matrix
3. Recommending – the recommendation of potential changes in the Local Action Plan and its updates



## EXPERIMENTING FOR URBAN RESILIENCE



The main problem identified in Załęże is **social anomie**. To give an impulse for building new interpersonal relationships the city of Katowice and ULG has decided that the aim of an experiment should be an increase in citizens' engagement in local affairs. It was also decided that the experiment should be one of the events within the local festival called "Załęże Days". This year, for the first time, all the institutions from Załęże decided to organise one big district event (**Załęże Days – organized on the Londzin Square<sup>3</sup>, commonly called Pear Square**) instead of organizing a few smaller ones (*this is one of Resilient Europe's achievements, as the institutions started to meet regularly at ULG meetings*). The

Experiment "**Gruszkowe Maskkety**" – "**The Pear Festival**" was aimed at preparation of pear-sweets (e.g. cakes, jams) and other homemade products and then selling them during the festival. Those who decided to buy the products were supposed to fill in a short survey. This involved the choice of the local purpose (social or spatial) for which the money should be spent. The aims were the following: the purchase of teaching materials for educational institutions, the purchase of Christmas decorations – holiday lights, placing a bench near at the oak tree - planted on the occasion of the 650<sup>th</sup> anniversary of the district and others. The whole process of event promotion and the engagement of residents was the ULG's task. The responsibility of the city hall was to assist in the process and to prepare promotional materials and prizes. It was decided to give 3 special gifts for those who had bought the products. Small gifts were prepared also for those who cooked sweets, such as: city promotional gadgets. What's more, to fulfil the

---

<sup>3</sup> The Londzin Square ("Pear Square"), which is the main public area in the district, will be revitalized in 2018. The project includes: landscaping, placing some park furniture, the construction of a playground and recreational infrastructure. It is intended to be a place for numerous local events. The concept of the revitalization project was consulted with the Urbact Local Group.

CL2 the city prepared invitations for entrepreneurship workshops to be held in September or October.

**Connection between experiment and objectives.**

The festival - 'Załęże Days' was held on 8.10.2017. The Pear Festival Experiment showed that in Załęże, there is a group of residents who are willing to join in work for the district and they are able to devote their time to organize an event for all residents. It is also worth mentioning that children from the local primary school were involved in the Pear Festival Experiment. They sold hand-made decorative articles.

Approximately 15 people were engaged in the action, including one person from ULG who was the coordinator. It is assumed that 100 people bought products offered during The Pear Festival. Funds collected during the Pear Festival (~ 50 euro), were spent for the purpose indicated by the local community. The fact that the organizers of 'Załęże Days' plan to repeat the Pear Festival in the following years adds additional value to the event.





#### Key indicators for success:

- Including the experiment into the bigger local festival
- Timing with other local events
- Choosing the experiment coordinator
- Connecting the experiment with the local identity (*The Pear Festival held on the Pear Square*)
- Joint preparation of an experiment (Katowice city hall with LGU)
- The level of LGU and citizens' engagement
- Promotion of the event
- "attractors" i.e. the awards for participants
- weather conditions

#### Lessons learned:

- changing the model of social relationships is certainly difficult but in small steps possible, though it won't be possible without the citizens' good will
- having a "clear impulse", Załęże residents are eager to present an active attitude

- finance, though very important, is not the main effective way of intervention
- the information campaign should be organized widely and in advance
- the coordination with different local events is highly important (if there were too many we would lose interest)
- the local coordinator of an event is its key driver
- although the Załęże community is already integrated it still needs the city's interest (in various fields of activity)

## CONCLUSION

Due to the multidimensionality of the defined processes of strengthening the resilience of Załęże, the Integrated Action Plan has a horizontal function in relation to the selected planning and strategies of Katowice City, i.e.:

- City Development Strategy Katowice 2030
- Local Revitalization Programme
- Housing strategy of the City of Katowice
- Housing resource management programme of the City of Katowice
- Environment Protection Programme for the City of Katowice
- Culture development strategy of the City of Katowice
- Promotion strategy of the City of Katowice

The Local Action Program for Załęże also has a detailed function in relation to the above-mentioned documents, in the context of identified objectives and projects that build the resilience of the analysed area.

This means that the provisions of the Integrated Action Plan for Załęże define a separate and coherent set of its own activities and projects aimed at building the district's resilience in the following areas: social, economic, spatial and institutional.

The Potential financial sources are as follows:

- The city budget
- EU funds
- EBI loans
- The budgets of local institutions
- Private companies
- Fund raising (collection)