



AN ADVENTURE BETWEEN PAST AND FUTURE

*SANATORIUM MARITIME
DE ZUYDCOOTE*

—
WORKSHOP PROJECT

CHAGNON Manon
ESCURIER Emma

SETOLA Naya
DEBRUL Kirsten

SCHMITZ Mélanie
GILLET Aude

Context and History



INDUSTRIALISATION

MARITIME HOSPITAL -> WORKING CHILDREN

PARENTS CAME TO VISIT THEIR CHILDREN OVER THE WEEKEND BY TRAIN

Situation



- CLOSE TO THE SEA -> FRESH AIR
- NEAR FERME NORD -> DAIRY AND MEAT
- NEAR FERME SUD -> GRAIN

Situation



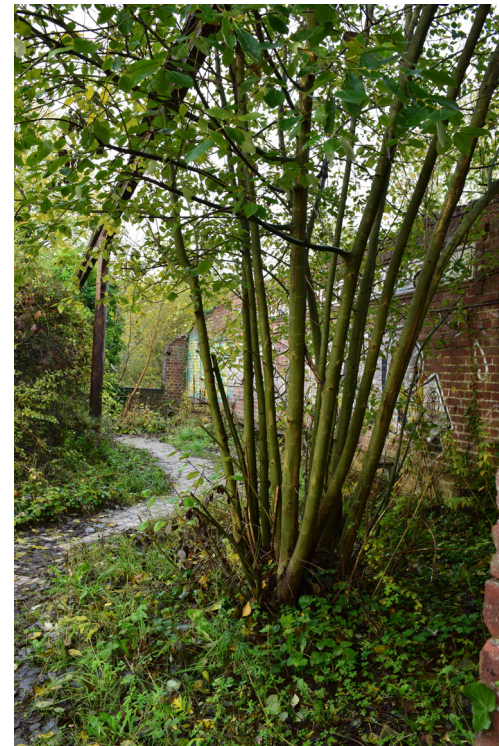
Situation – Front of the Wall



Situation – Back of the Wall



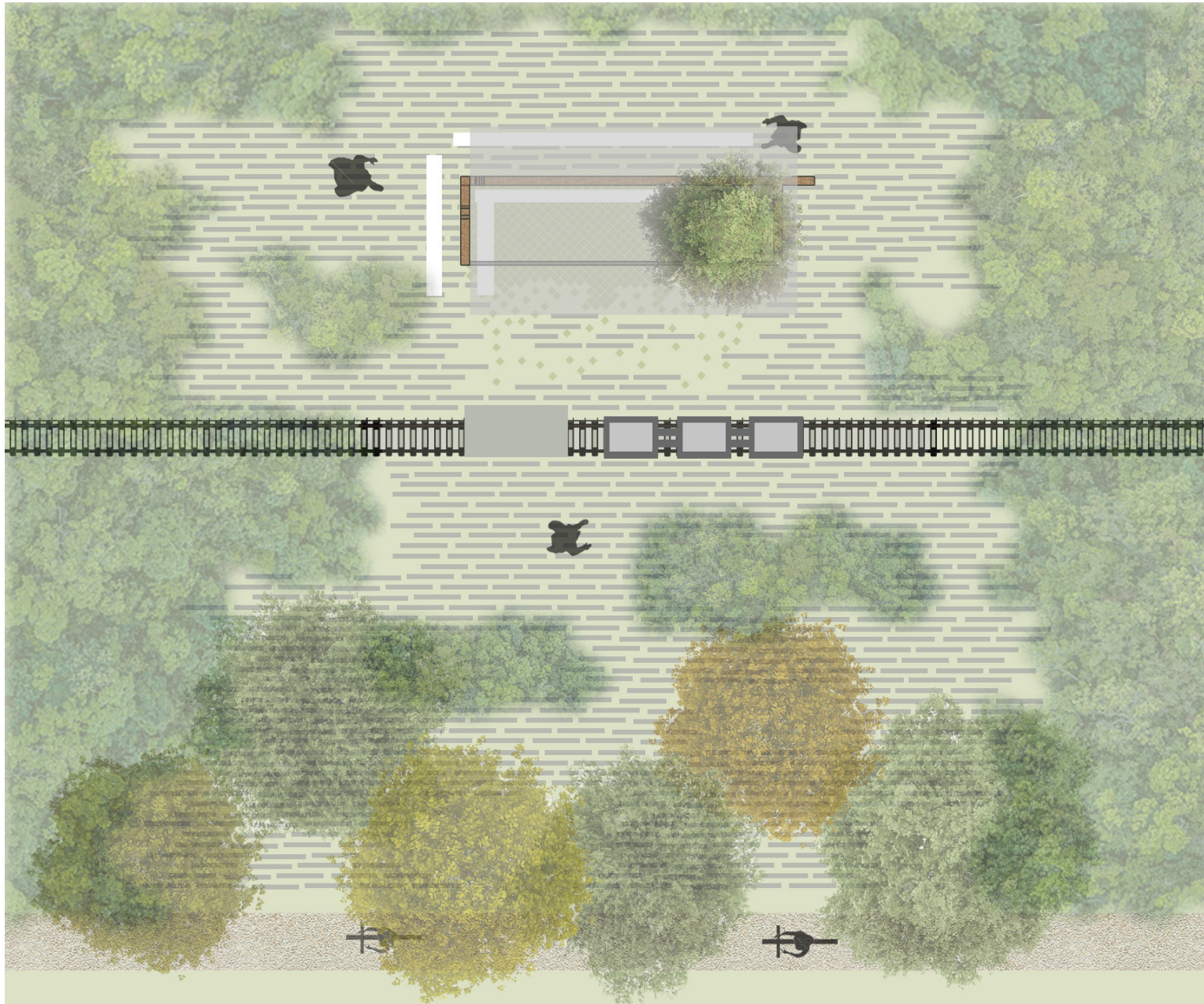
Situation – Re-use of Materials



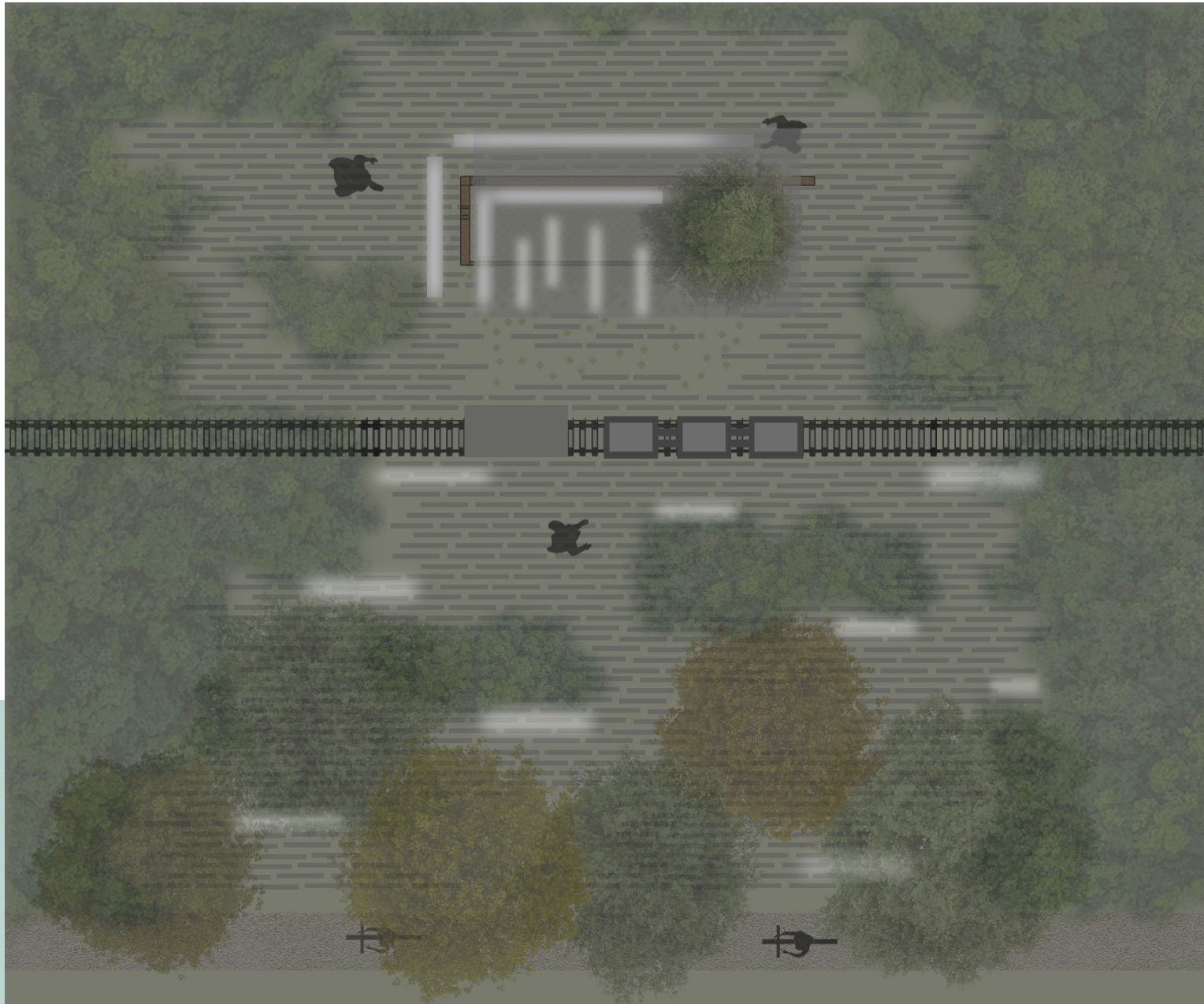
Global idea

- FOCUS ON THE HISTORY OF THE STATION
- CREATING A CONTRAST BETWEEN OLD AND NEW ELEMENTS
- PROVIDING A PLACE TO REST
- OVERVIEW OF THE VELOROUTE
- INVOLVING KIDS AND ADULTS IN THE EXPLORATION OF THE SITE

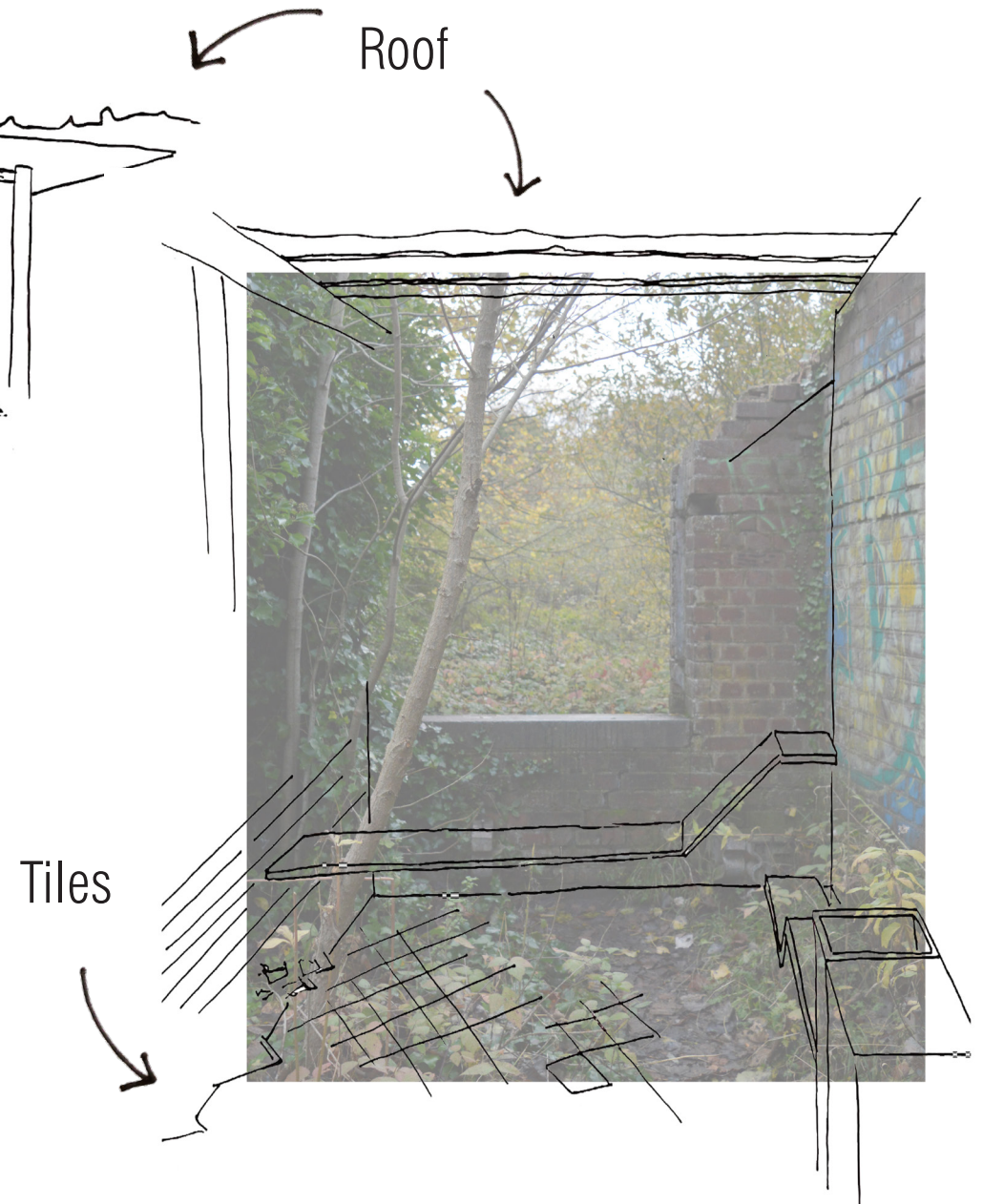
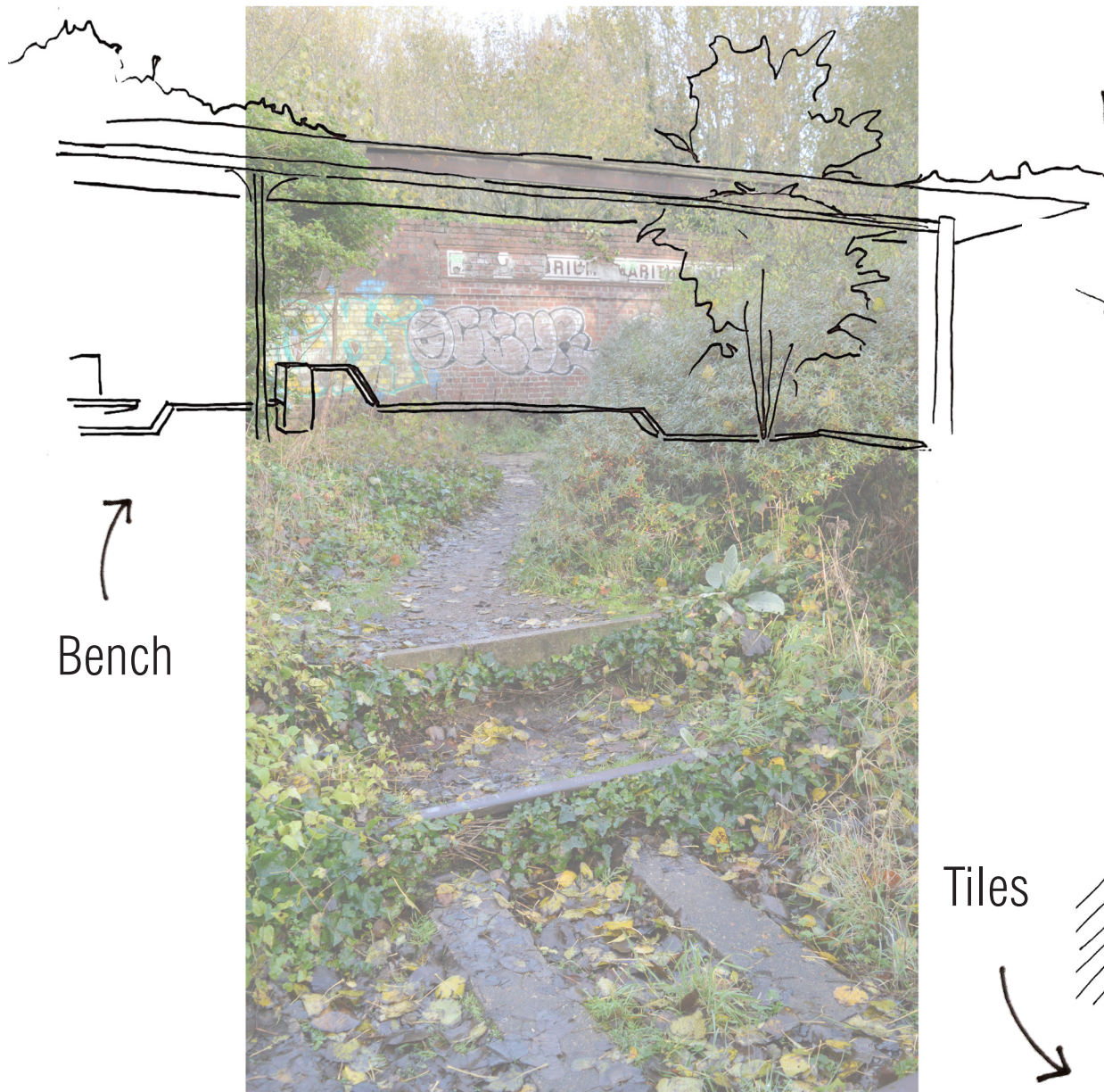
Proposal – Map, of the day



Proposal – Map, by night with lights



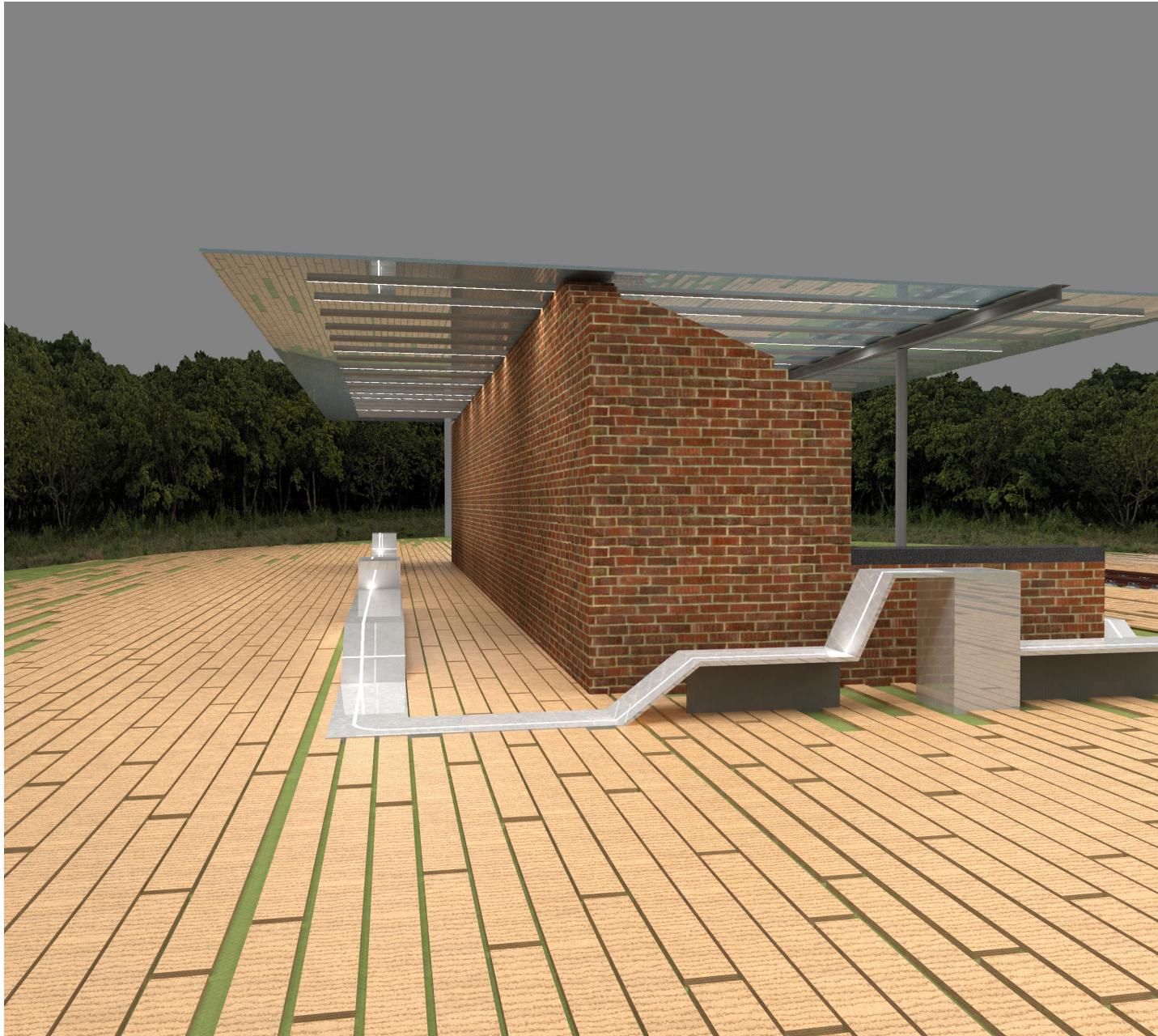
Proposal – Sketches



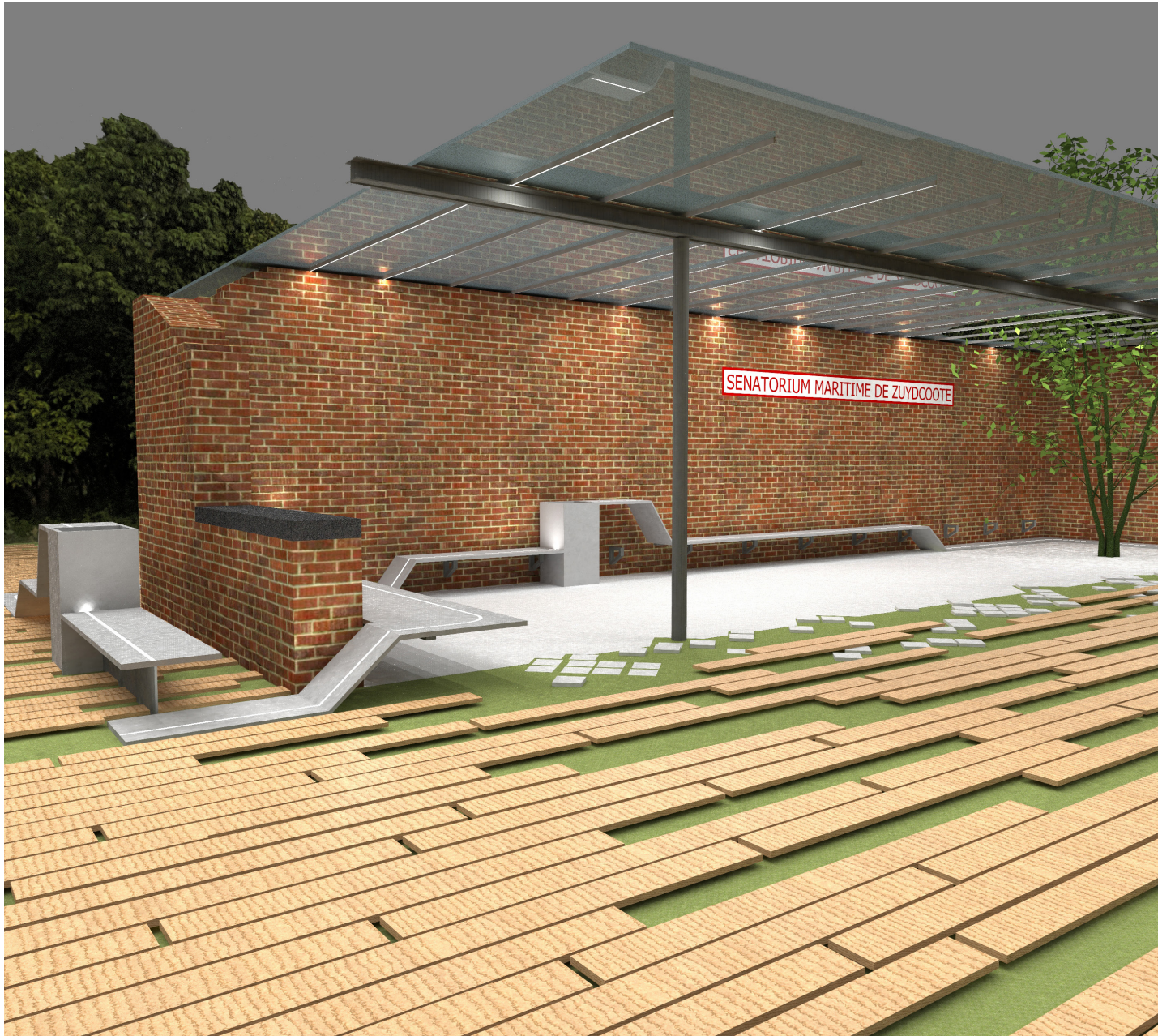
Proposal – Renders



Proposal – Renders



Proposal – Renders



Proposal – Ground

ACTION PLAN

CUTTING VEGETATION IN THESE AREAS

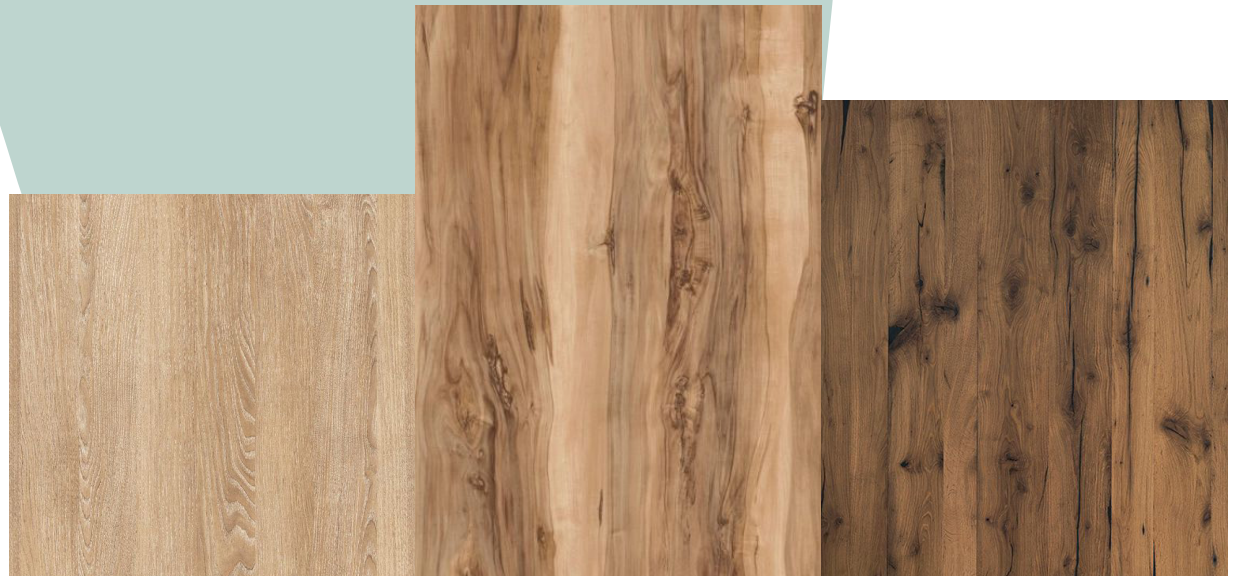
CREATE A **NEW CIRCULATION** BY APPLYING WOODEN SLAT

ADDING A **PLATFORM** AROUND THE STATION TO CREATE AN EVEN LEVEL

RESTORE THE TILES AND REPOSITION THEM TO EVEN THE GROUNDLEVEL

CREATING A WHEELCHAIR ACCESSIBLE PATH TO THE STATION BY **ADDING A BRIDGE OVER THE TRAINRAILS**

CREATING A PARKING FACILITY FOR BIKES NEAR THE VELOURUTE



Proposal – Back of the wall

● ACTION PLAN

REMOVING OLD GRAFFITI FROM THE WALL

PAINTING AN **INFORMATIVE MAP** IN GRAFFITI ON THE BACK OF THE WALL
TO SHOW **TOURISTIC HOTSPOTS** IN THE NEIGHBOURHOOD

TO **PROPOSE A CONTEST** BETWEEN LOCAL ARTIST FOR THE
CREATION OF A NEW NEW MURAL GRAFFITI

CONTEMPLATIVE SPACE



Proposal – Benches

● ACTION PLAN

DIFFERENT FUNCTIONS THANKS VARIETY OF BENCH LEVELS
(SIT, LAY DOWN, EAT, ...)

TRASH CANS **INSERTS** IN THE BENCH STRUCTURE

HIGHLIGHT A TEMPORARY CONTRAST WITH :

- **NO CONTACT** BETWEEN NEW ELEMENTS AND EXISTING WALL
- USE **MODERN BENCH COVER** - WHITE MINERAL RESIN MATERIAL (I.E. CORIAN, HI MACS)

ADVANTAGES : HIGH RESISTANCE, LONG LASTING, EASY MAINTENANCE
(EVEN GRAFITI CLEANING), NO JOINS

- THE ALL NEW ELEMENTS ADDED
WILL BE WHITE TO MARK THE
DESIRED CONTRAST BETWEEN
THE PAST AND THE FUTURE



Proposal – Lights

● ACTION PLAN

ADDING LIGHTS TO THE ROOF AND BENCH TO **HIGHLIGHT THE NEW ELEMENTS**
AND TO THE PATH TO MAKE THE WAY **MORE CLEAR**

INSERT A LIGHT LED STRIP INTO THE DIFFERENT STRUCTURES OF THE SITE

THE LIGHTS **LEAD USERS** AND INVITE THEM TO GO BEHIND THE WALL

USE OF A **PHOTOVOLTAIC PANEL SYSTEM** TO PROVIDE THE ELECTRICITY FOR THE LIGHTS

Proposal – Roof

● ACTION PLAN

ADDING A **TRANSPARANT** ROOF TO THE EXISTING STRUCTURE

CUTTING A **HOLE** IN THE ROOF TO ALLOW THE TREE TO STAY THERE

NEW WHITE METALLIC STRUCTURE COVERED BY GLASS, WHICH **FLOAT** LIKE THE BENCH ON THE TOP OF THE OLD WALL

LEDS STRIPS INSERT IN THE METALLIC STRUCTURE

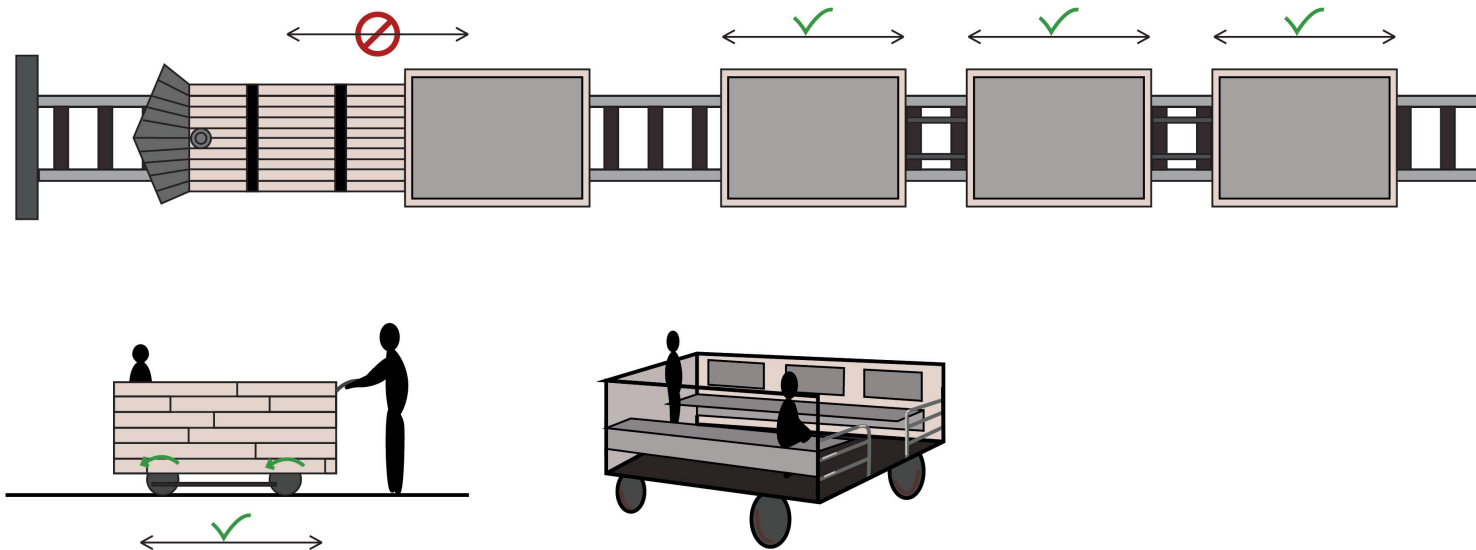


Proposal – Train

ACTION PLAN

INTERACTIVE TRAIN ON THE RAILS WITH BELOW FUNCTIONS :

- LEARNING TROUGH EDUCATIVE INFORMATION FROM TOURISTIC AGENCY
- PLAYING



Conclusion

- **INTEGRATE A URBAN DESIGN IN AN HISTORICAL PLACE**

MAKE A **BALANCE** BETWEEN AN INCREASED **VISIBILITY AND ACCESSIBILITY**,
AND A **MYSTERIOUS AND HIDDEN ATMOSPHERE**

ATTRACT BROAD AUDIENCE FROM KIDS TO ADULTS AND DISABLED PEOPLE

PROMOTE LOCAL STREET ART WITH GRAFFITI AT THE BACK OF THE WALL

RECONNECT THE REGIONAL TOURISTIC SITES TO THE VELOROUTE