



5th Conference on Sustainable Urban Mobility Virtual CSUM2020

17-19 June 2020

A Regional Competence Centre (CC) for SUMP in Central Macedonia, responding to the identified local needs

Presenter(s): Maria Chatziathanasiou, HIT-CERTH

Author(s): Maria Chatziathanasiou, Maria Morfoulaki (HIT-CERTH), Konstantia Mpressa (RCM), Lambrini Tsoli (RDFCM)

Sponsors

Gold



Silver



Bronze



Smart technology • Better world



Media



With the support of



ΠΕΡΙΦΕΡΕΙΑ ΘΕΣΣΑΛΙΑΣ
ΠΕΡΙΦΕΡΕΙΑΚΕΣ ΕΝΟΤΗΤΕΣ
ΜΑΓΝΗΣΙΑΣ & ΣΙΦΟΡΑΣ



ΔΗΜΟΣ ΣΚΙΑΘΟΥ
MUNICIPALITY OF SKIATHOS




Contents

1. Europe's perspective for SUMP
2. Regional/ metropolitan role in SUMP
3. SUMP status in RCM
4. Framework for the SUMP - CC creation
5. The SUMP Competence Center of RCM
6. Results
7. The way forward



Europe's perspective for SUMP

- High in Commission's agenda throughout the last decade
- SUMP concept clearly formulated through the Urban Mobility package (2013) and the Eltis Guidelines (2013, 2019)
- SUMP have proven their potentialities, BUT...

 328 cities participating in 2017 SUMP assessment survey (SUMP – UP project)

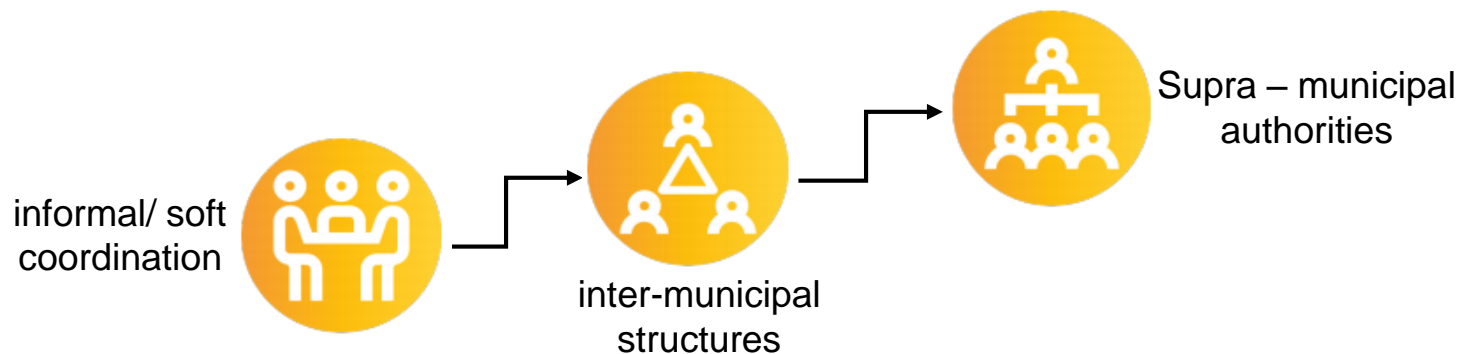
 37% with a SUMP

...challenges in adoption are still evident



Regional/ metropolitan role in SUMP

Regional/ metropolitan structures in Europe, reflecting on SUMP governance*:



*source: ELTIS topic guide “Sustainable Urban Mobility Planning in Metropolitan Regions”

Regions and metropolises can:

- frame the wider mobility strategy - large scale territorial planning**
- manage funds of important SUMP pillars (i.e. PT)**
- ensure coordinated actions / local SUMP integration**



SUMP status in RCM

SUMPs are developed in a city level but RCM has not a mandate to coordinate or supervise them



informal/ soft coordination

38

municipalities

24

cities received fund for SUMP in 2017

10

cities currently implementing SUMP

5

cities currently planning SUMP

2

cities with approved SUMP



Framework for the SUMP-CC creation

Collaboration and co-creation within the REFORM project

REFORM Partners



REFORM
Interreg Europe
European Union
European Regional
Development Fund

EU good practices on sustainable mobility planning and SUMP

www.interreguurope.eu/reform

Manual on "Transferability of good practices, policies and experiences from the REFORM Project to other European Regions"

www.interreguurope.eu/reform

REFORM
Interreg Europe
European Union
European Regional
Development Fund

REFORM Policy Paper
STRENGTHENING THE ROLE OF REGIONS IN SUMP DEVELOPMENT

INTRODUCTION

Sustainable urban mobility planning is a planning concept that encourages to work towards more sustainable transport modes and supports an integrated development of all modes. By ensuring a sustainable urban mobility plan (SUMP) more European cities aim to bring the sustainable and high-quality mobility that the mobility needs of all users while also reducing local and regional environmental, social and economic, objectives, and ultimately making the city more livable.

One of the main objectives of sustainable urban mobility planning is to plan for mobility at the scale of the functional area which goes beyond the geographical boundaries of the city and corresponds to the existing pattern of urban mobility and road transportation. Therefore, metropolitan areas and regions have a key role to play in supporting the development and implementation of SUMP at this scale, providing a legal and institutional framework which enables metropolitan and regional administrations to support municipalities in their planning activities in carrying forward.

This policy paper intends to give a set of recommendations to strengthen the role of regions and metropolitan areas in the sustainable urban mobility planning process.

SUSTAINABLE URBAN MOBILITY PLANNING & REGIONS

The Urban Mobility Package released in 2013 recognizes that it is primarily the responsibility of the local actors to develop and adopt strategic planning for sustainable urban mobility, action plans and monitoring frameworks.

The Urban Mobility Package highlights the important role of Member States in providing the right conditions for local actors and for ensuring that the action at the different levels of government and mutually reinforcing, however, the role of regional or metropolitan areas is not forgotten.

The lack of coordination between several entities of the same region or metropolitan area can lead to unbalanced and fragmented actions across the different, even overlapping, municipalities of the same urban area.

Being regions a scale of support for local authorities planning is to plan for mobility at the scale of the functional area which goes beyond the geographical boundaries of the city and corresponds to the existing pattern of urban mobility and road transportation.

In sustainable urban mobility planning could deliver several benefits in terms of their development and implementation:

- Harmonisation and integration of sustainable urban mobility planning approaches at a wider territorial scale, including the extra-urban dimension (i.e. employment areas, and urban sprawl);
- Efficient and timely delivery of plans at a regional level;
- Development and implementation of SUMP by a larger number of cities in a region, including medium-sized ones;
- Sustainability of the effects of the support actions, thanks to better implementation of the policies at different territorial levels (i.e. local and regional);
- Data exchange and integrated management for monitoring and ongoing projects;
- Enhanced opportunities to fund mobility measures through Regional Operational Programmes of the European Regional Development Fund.





Framework for the SUMP-CC creation

Collecting Good practices and identifying regional needs



Project partners working closely with regional and European donors of experience (cities, experts, scientists). Regional and city stakeholders providing insights on the needs

Defining Action Plans



Local stakeholders (citizens, experts, scientists, transport operators, cities) discussing on their, evaluating proposals and co-deciding on the actions

Analyzing transferability



Local stakeholders (experts, scientists, transport operators, cities) defining prerequisites for Good Practices adoption in the Action Plans

Enhancing planning capacities



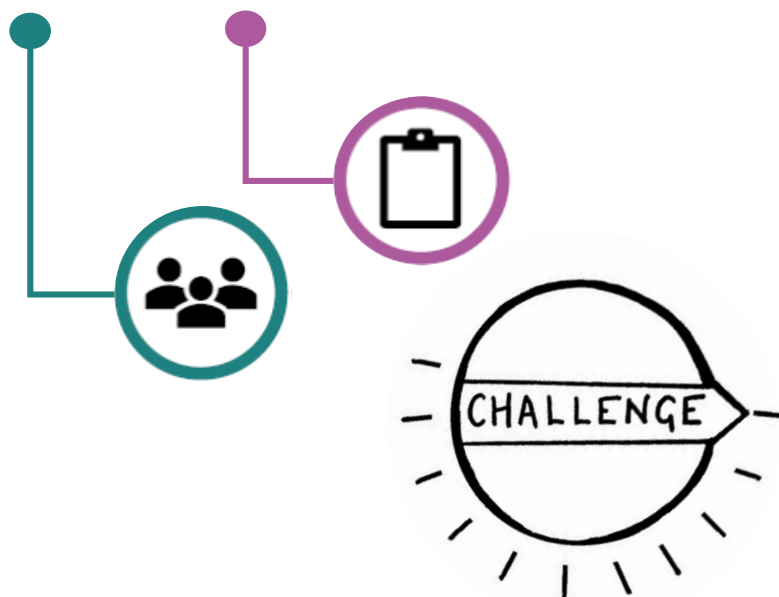
Regional and city authorities increasing their capacity in SUMP development



Framework for the SUMP-CC creation

Identified needs from cities and regional authorities

10 semi-structured interviews with cities' and region's representatives



- **Incomplete knowledge and/ or limited in-house capacities**
- **No dedicated departments for SUMP; no clear jurisdictions; fragmentation of responsibilities**
- **Lack of systematic approach at national level**
- **Legislative/ administrative issues (i.e. difficult procurement framework for external support)**
- **Limited citizens and stakeholders' engagement and synergies with other municipalities**



Framework for the SUMP-CC creation

Cities' requirements for a SUMP support mechanism

*25 online questionnaires
from representatives of
18 cities*



For SUMP
preparation



- What are the data needed for the development of SUMP and the methodologies of collection and analysis?
- What are the steps to be described in the SUMP external expert contract?

For SUMP
development



- How to define vision, objectives and priorities?
- How to supervise the use of (traffic) models?
- How to supervise data analysis (with or without the use of a traffic model)

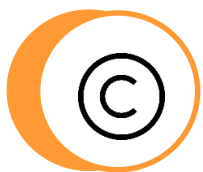


The SUMP Competence Center of RCM

**Online tool, facilitating
technical implementation
of SUMPs**

Find it here:

<http://www.keyp-svak-rcm.imet.gr/>



Register Login Contact Us

Επιχειρήματα • Μεθοδολογία • Χρήσιμα Αρθρα • Συχνές Ερωτήσεις • Εκπαιδευση • Νέα • Άλλα Π.Κ.Μ. • Forum • Επικοινωνία

Κέντρο Υποστήριξης ΣΒΑΚ

Σustainable Urban Mobility Competence Centre
A cooperation for enhancing the Sustainable Mobility in Central Macedonia

Περιφέρεια Κεντρικής Μακεδονίας

ΚΕΝΤΡΟ ΥΠΟΣΤΗΡΙΞΗΣ ΚΙΝΗΤΙΚΟΤΗΤΑΣ & ΔΙΑΥΛΟΝ ΜΕΤΑΦΟΡΩΝ ΕΠΑΡΧΙΑΚΟ ΚΕΝΤΡΟ ΕΠΙΧΕΙΡΗΣΗΣ & ΤΕΧΝΟΛΟΓΙΚΗΣ ΑΝΑΠΤΥΞΗΣ

Πληροφορίες για το ΣΒΑΚ
Μεθοδολογία υλοποίησης
Συχνές Ερωτήσεις
ΣΒΑΚ στους Δήμους της Π.Κ.Μ.
Χρήσιμα Αρθρα
Εκπαιδευτικά υλικά για τους Δήμους

REFORM Interreg Europe
European Union European Regional Development Fund

Βασιλικός-Μιχαήλ Γ. Βασιλοπούλου
Επιχειρησιακή Συμπόρευση ΜΕΤ

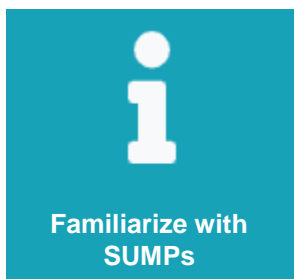
Αρμοστικότητα/συμπεριληπτικότητα
Εργ. Ψηφιακή Ευρωπαϊκή Συμπόρευση ΜΕΤ

Copyright 2019 by CERTH/IMET developed by Βασιλική-Μιχαήλ Γ. Βασιλοπούλου
Terms Of Use | Privacy Statement



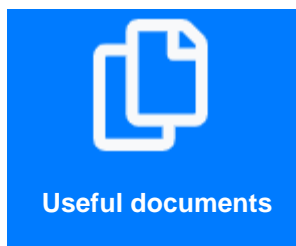
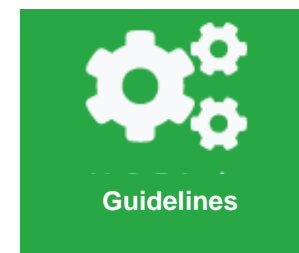
The SUMP Competence Center of RCM

main provisions



Familiarize with the new approach in urban mobility

Increase knowledge on SUMP's > facilitate SUMP development and/or management

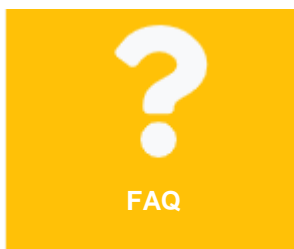


Facilitate administrative procedures related to SUMP planning and/or management; facilitate SUMP development and/or management



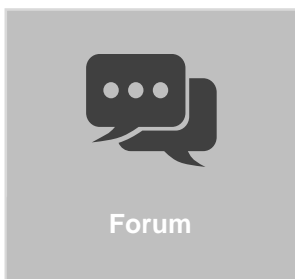
The SUMP Competence Center of RCM

main provisions



Increase knowledge on SUMP > facilitate SUMP development and/or management

Support SUMP community feeling; increase SUMP visibility; develop synergies

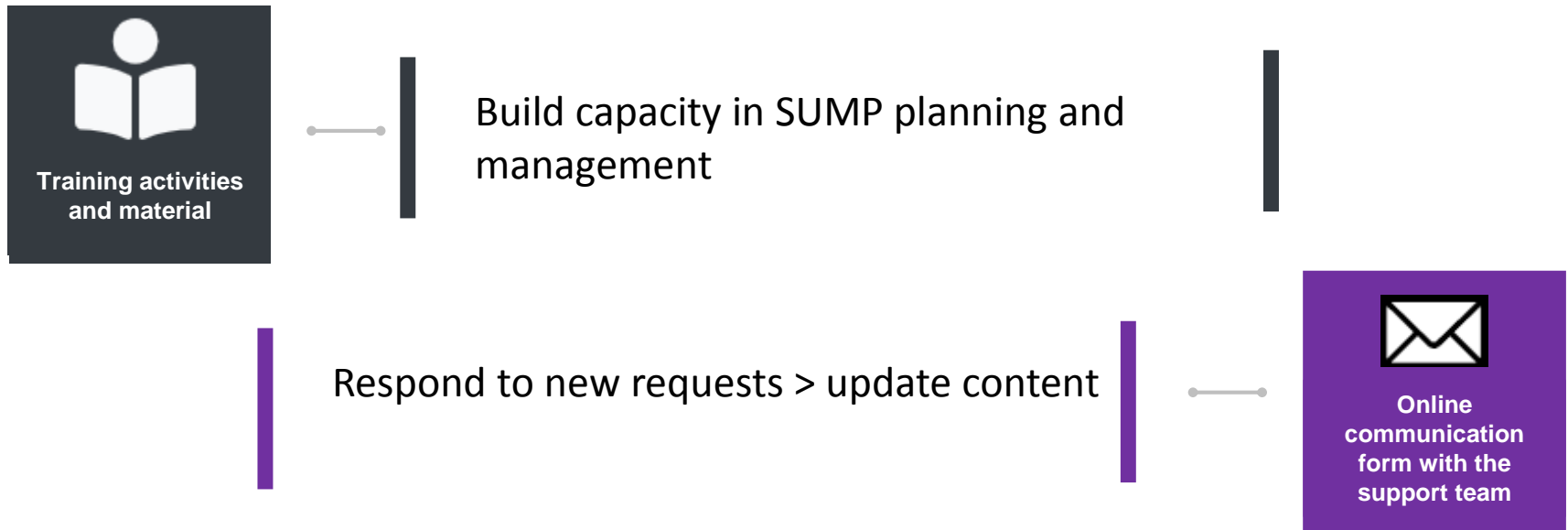


Develop synergies between cities; facilitate administrative procedures



The SUMP Competence Center of RCM

main provisions





Results

RCM SUMP CC was established through a structured process, based on exchange of experience and co-creation.

- Since its announcement to the cities (November 2019) and before the outburst of COVID-19:

102
users

206
sessions

720
page views



The way forward

- ✓ *Provide custom-made training and material to the cities*
- ✓ *Content update in the COVID-19 era (i.e. online tools for engagement to planning)*
- ✓ *Operational integration with other tools*



**Competence
Center**

**Observatory
for
sustainable
mobility**

- ✓ monitor SUMP implementation
- ✓ ensure complementarity of local plans and liaison with regional policies
- ✓ Integrate Sustainable Mobility Indicators (SUMI)

Contact Details

Maria Chatziathanasiou

Hellenic Institute of Transport – Centre for Research and
Technology Hellas

Email: mariacha@certh.gr

Sponsors

Silver

Gold



Bronze



Smart technology • Better world



Media



With the support of



ΠΕΡΙΦΕΡΕΙΑ ΘΕΣΣΑΛΙΑΣ
ΠΕΡΙΦΕΡΕΙΑΚΕΣ ΕΝΟΤΗΤΕΣ
ΜΑΓΝΗΣΙΑΣ & ΣΠΟΡΑΣΩΝ



ΔΗΜΟΣ ΣΚΙΑΘΟΥ
MUNICIPALITY OF SKIATHOS