



NATAGRIWAL asbl
Vous conseiller, c'est notre nature!

Biodiversity data helps at targeting Agri- environmental scheme actions in Wallonia

Julien Piqueray
Natagriwal asbl
Head of scientific support cell

BIDREX workshop
Namur
February 2017

Targeted AES in Wallonia

- Broad “administrative” legal constraints:
 - For AES 8 (targeted strips) : be an arable field border (no permanent grassland) ; 3-30 meters width; No pesticides N ; No fertilizers (with possible derogations) ; Max. 9% of total arable field area of the farm; 5-year contract, 1250€/ha.
 - For AES 4 (grasslands with high biological value) : be permanent grassland ; No pesticides N ; No fertilizers (with possible derogations) ; 5-year contract, 450€/ha.
- Other obligations defined by Natagriwal based on targeted (group of) species or habitats:
 - Sowing/mowing/grazing dates and rates
 - Seed mix
 - Pond creation
 - Unmown refugees
 - ...

Farm advisors team



W

Christophe Manssens

0498 79 99 89
cmanssens@natagriwal.be



W

Julie Rouer

0499 47 20 94
jrouer@natagriwal.be



H

Stéphanie Gheysens

0471 78 22 76
sgheysens@natagriwal.be



H

M

C

L

Serge Rouxhet

0494 45 24 08
srouxhet@natagriwal.be

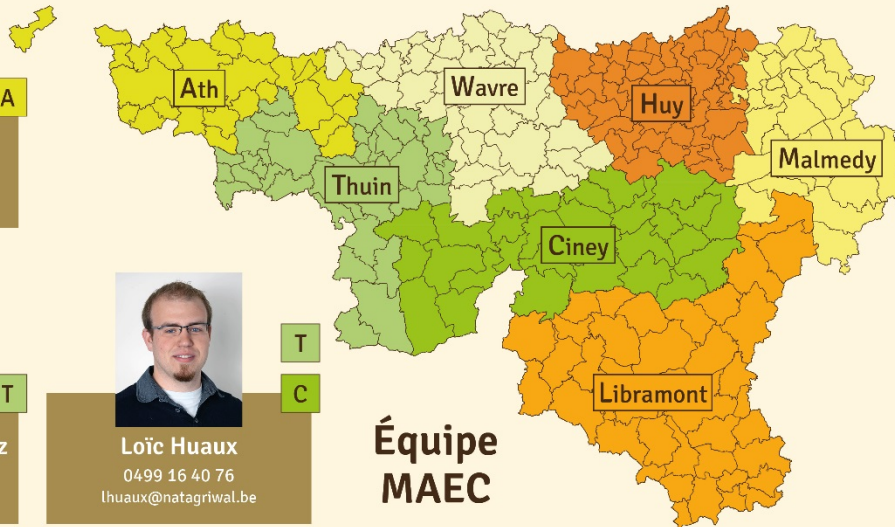


M

Anne Philippe

0496 28 23 99
aphilippe@natagriwal.be

Carte des directions extérieures du Département de l'Agriculture du Service public de Wallonie (SPW)



A

Grégoire Dieryck

0498 03 34 74
gdieryck@natagriwal.be



M

Gisela Hennes

0496 25 39 57
ghennes@natagriwal.be



T

François-Xavier Warnitz

0499 67 04 99
fxwarnitz@natagriwal.be



T

C

Loïc Huaux

0499 16 40 76
lhuaux@natagriwal.be



L

Aude Bernes

0499 94 30 86
abernes@natagriwal.be

**Équipe
MAEC**



**Caroline
Vanvinckenroye**

0493 14 05 10
cvanvinckenroye@natagriwal.be



C

François Cerisier

0498 49 14 20
fcerisier@natagriwal.be



L

C

Aurélie Borensztein

0492 83 83 81
aborensztein@natagriwal.be



L

François Arnould

0493 44 69 17
farnould@natagriwal.be



L

Thomas Gaillard

0493 07 86 88
tgaillard@natagriwal.be

Where to act? For which (group of) species ?

- Creation of decision tools for farm advisors (responsible for AES contracts).
- Based on biodiversity data (species occurrence):
 - Buffering
 - Models
- Adaptation of the AES management

Ex. 1 : targeted strips for threatened arable plants



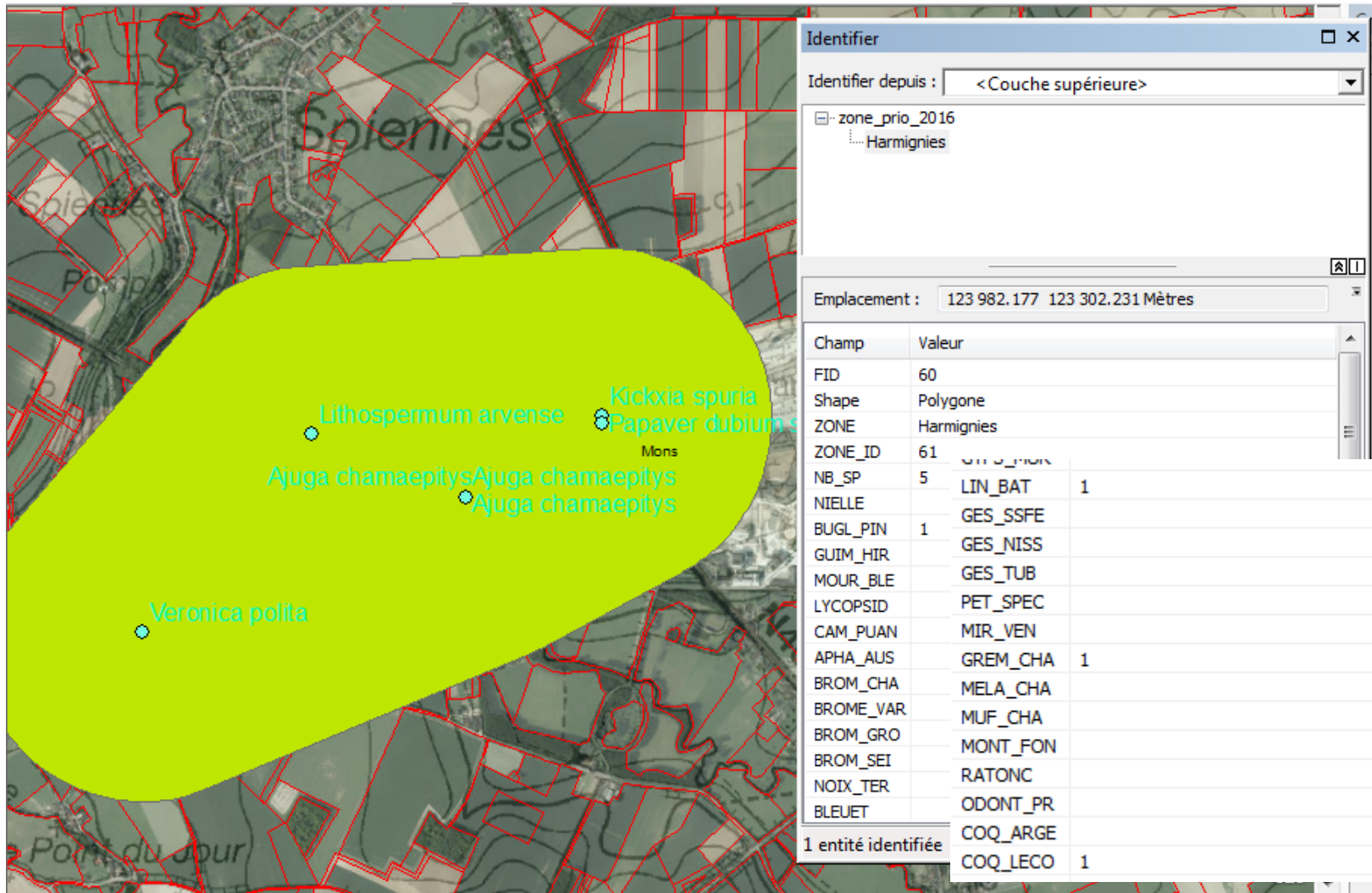
Ex. 1 : targeted strips for threatened arable plants

- Gathering of observation data by DEMNA, transmitted to Natagriwal. Period: 2010-2016.



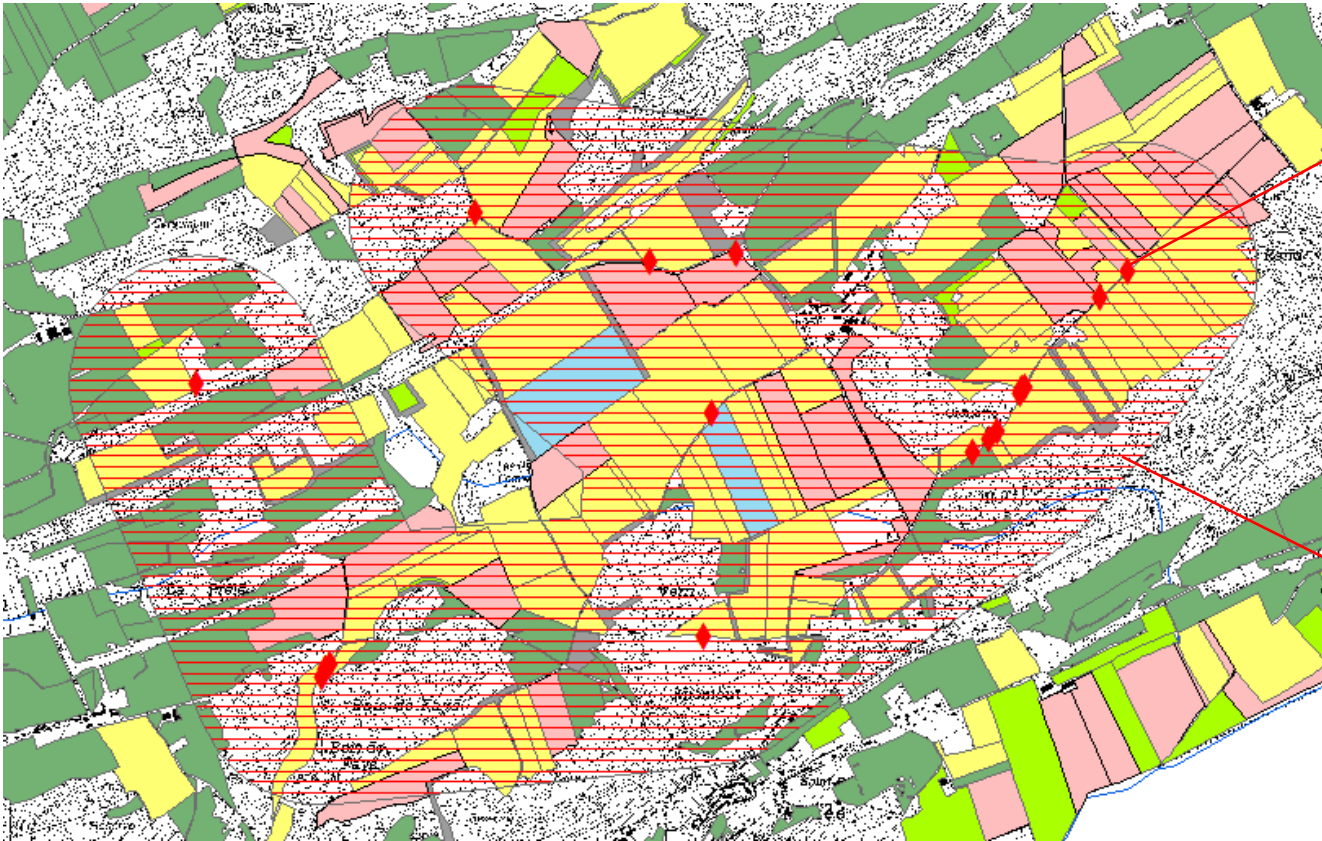
Ex. 1 : targeted strips for threatened arable plants

- Buffers around observation aggregates => arable plant priority zones.



Ex. 1 : targeted strips for threatened arable plants

➤ Targeted actions.

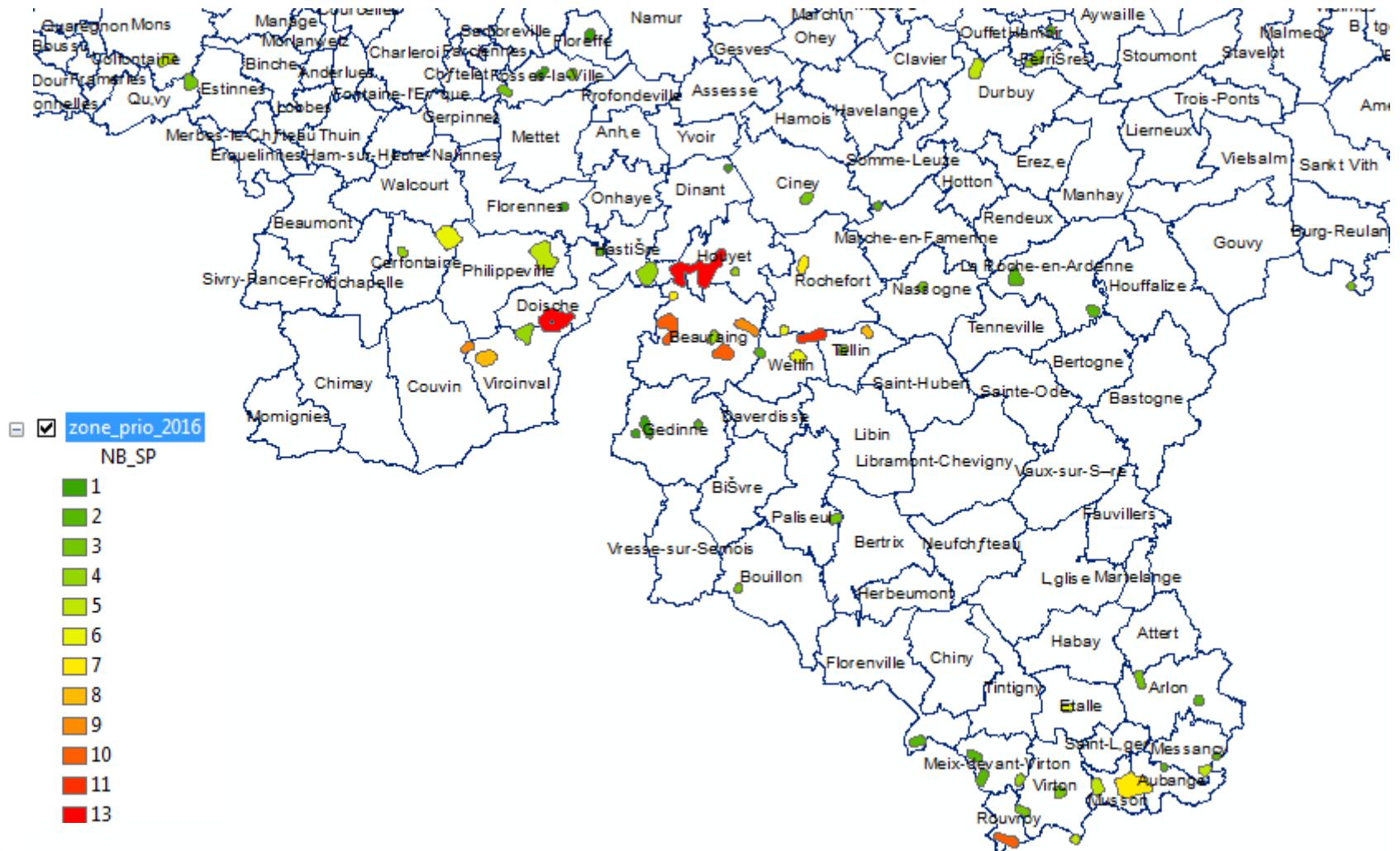


Observation data: direct contact with farmer to propose the implantation of a strip

Buffer zones around observation data: Arable plant conservation strip is available for farmer

Ex. 1 : targeted strips for threatened arable plants

- 65 arable plant priority zones in Wallonia (1-13 species/zone)



Ex. 2 : AES Grasslands for the violet copper



© David Kever

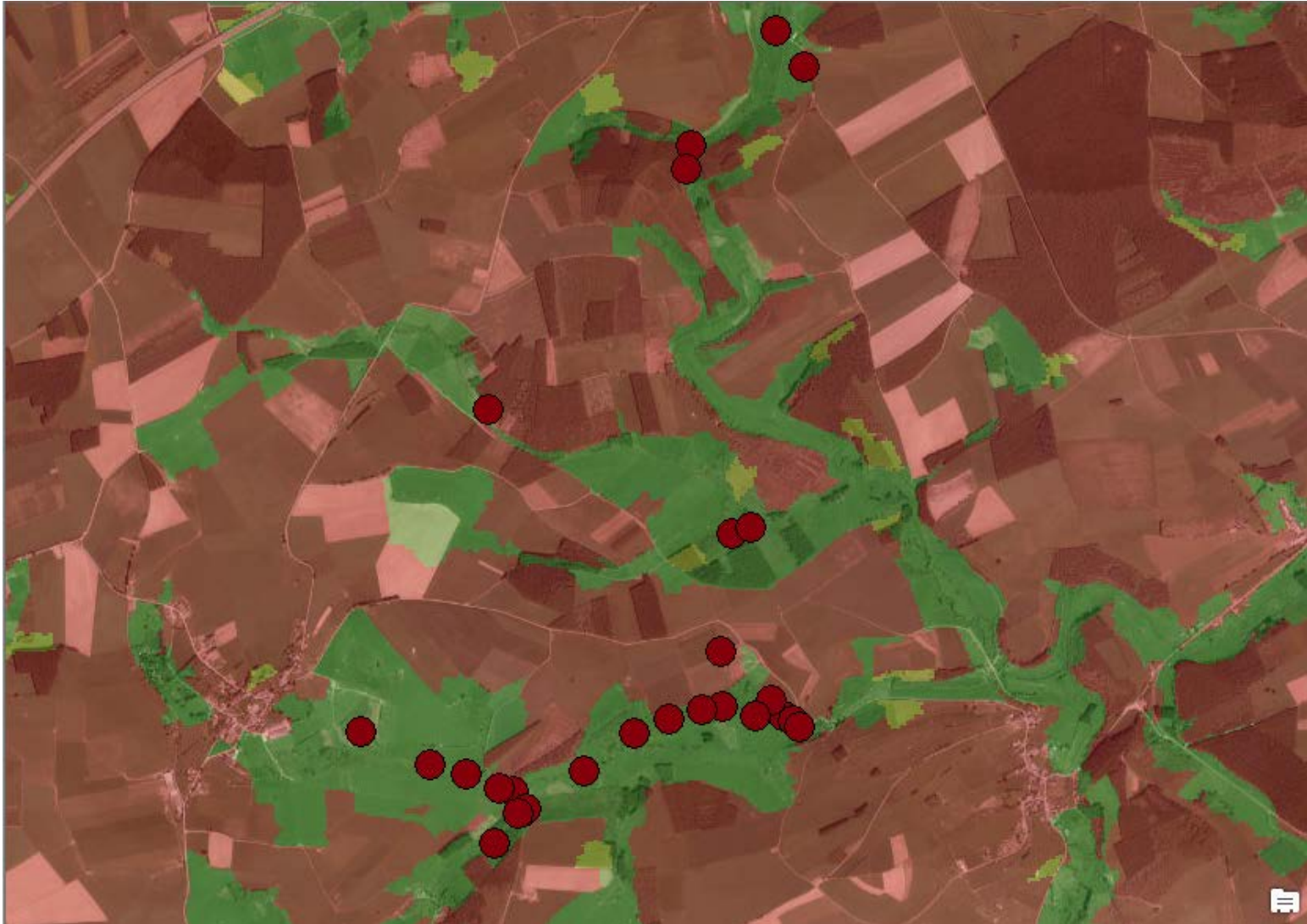
Ex. 2 : AES Grasslands for the violet copper

- Starting point : Occurrence data 2000-2016 (DEMNA)



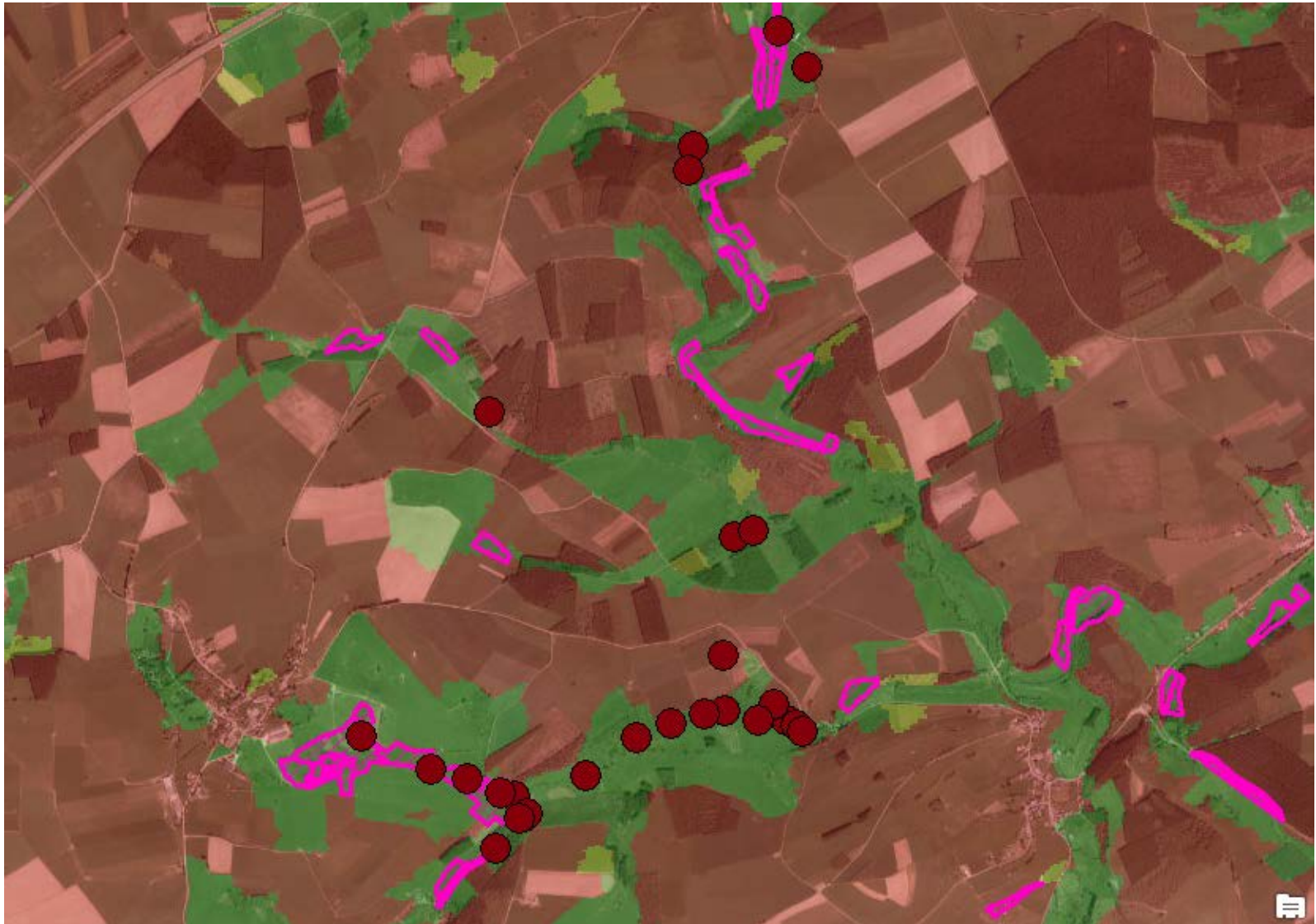
Ex. 2 : AES Grasslands for the violet copper

- Modelling potential favourable habitat (Univ. Liège & Natagriwal)



Ex. 2 : AES Grasslands for the violet copper

- Adaptation of AES grassland management to violet copper (include large unmown refugees)



Conclusions

- Targeting makes the conservation more efficient (Right action at the right place)
- Biodiversity data is needed for targeting
- An interpretation of raw data may be needed before transmission to field actors



European Union
European Regional
Development Fund

Thank you!

Questions welcome



www.interreg.eu/bid-rex