



BID-REX

Interreg Europe



European Union
European Regional
Development Fund

Improving Data Flows:
Case study 2

Implementation of a municipal development area in Wallonia

Luc Derochette and Annick Terneus

DGO3 – DEMNA – Nature and Water Directorate

luc.derochette@spw.wallonie.be – annick.terneus@spw.wallonie.be

2018 January 30th and 31th | Interregional thematic workshop in Budapest

Summary

PROCESSES

Data Collection and Recording		Data Validation and Management		Analysis and Information		Communication	
Actors	Tools	Actors	Tools	Actors	Tools	Actors	Tools

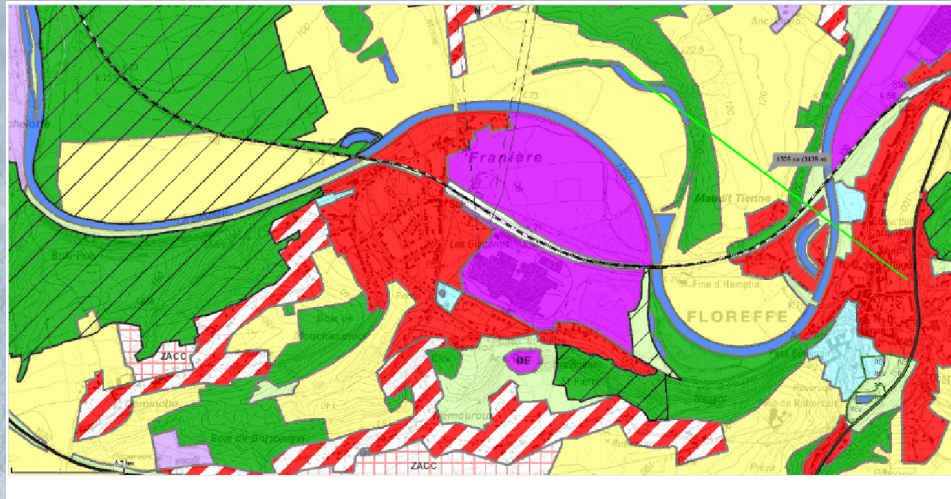
Case study in Wallonia

C
O
N
T
E
X
T

Nature Conservation	Creation of a Nature reserve	Public administration Nature associations Citizens	Recording interface Dedicated Data Base	Public Administration Nature Associations Quality Control Team	Dedicated Data Base Procedures	Dedicated Working groups (adm + assoc)	GeoData Maps Lists Hab & Sp	Managing Departments inside administration Political authority Municipalities	Legal acts Management plans
Development Project	Implementation of a municipal development area	Public administration Nature associations Specialised consulting firms/Authorized authors Citizens	Agreements and conventions Impacts assessments Regulatory provisions	Public Administration Nature Associations Quality Control Team	Dedicated Data Base Procedures	Dedicated Working groups (adm + assoc)	GeoData Maps Lists Hab & Sp Pressures and threats	Managing Departments inside administration Consulting firms Municipalities	Management plans Protection measures Mitigation measures
Establishment of Programme/Strategy	Elaboration of regional nature conservation objectives Natura 2000 implementation	Public administration Nature associations Citizens	Recording interface	Public Administration Nature Associations	Dedicated Data Base	Dedicated Working groups (adm + assoc)	Maps Inventories Conservation status Pressures and	Managing Departments inside administration Political authority Lobbies Trades	Legal acts Strategies NC projects

LAND PLANNING CONTEXT IN WALLONIA

- **Wallonia is covered by a « sectoral plan »** which reflects land planning. It assigns a destination to the different areas : residential, agricultural, natural, forestry, common equipments, public services, industry...



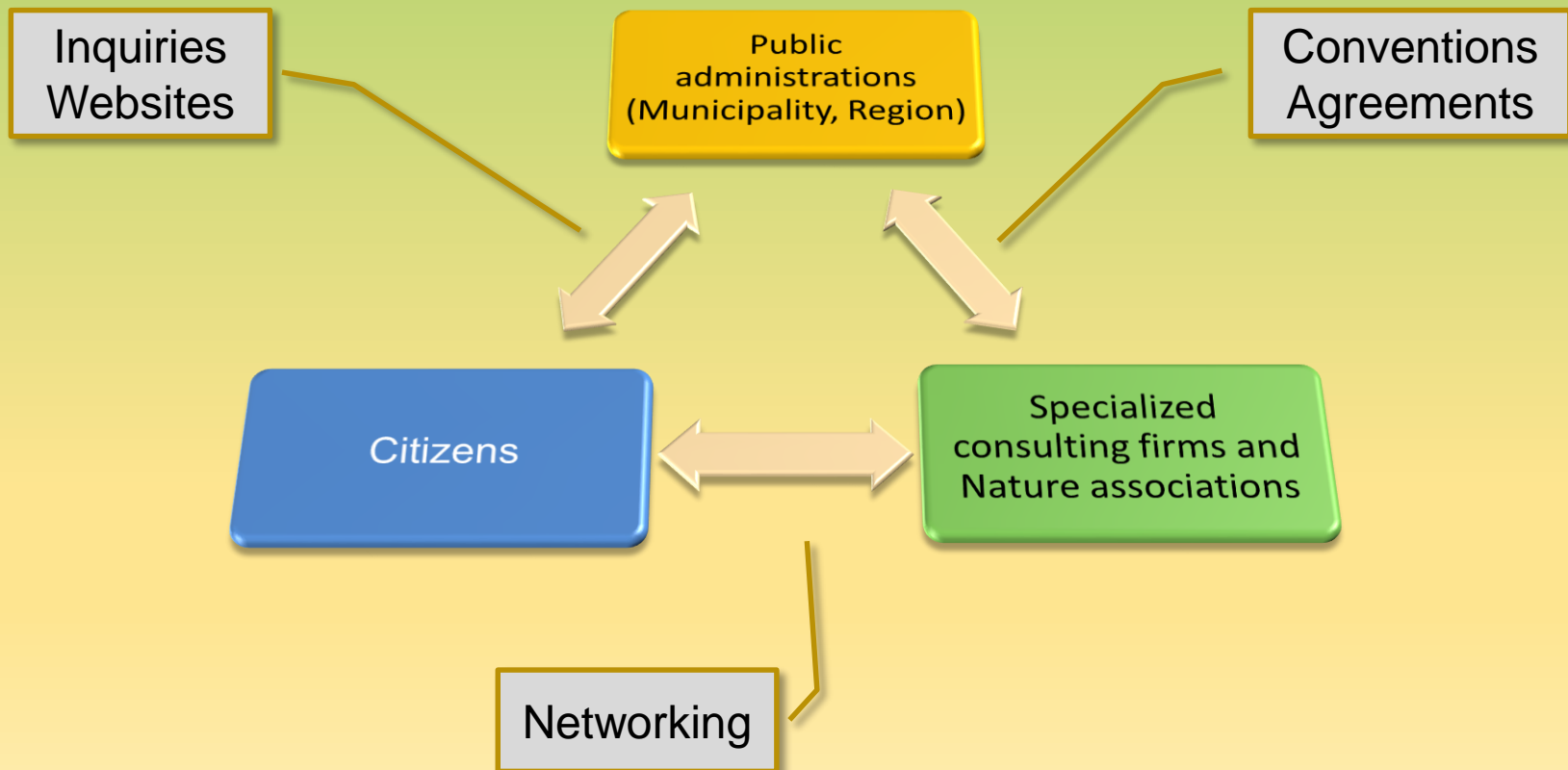
- **Some areas are let « for future development »**, leaving the choice to the municipalities to implement these areas according to the needs.

IMPLEMENTATION OF A MUNICIPAL DEVELOPMENT AREA IN WALLONIA : THE PROCESS

- **If the municipal development area is not intended to be urbanized**, the municipality can decide the lay out.
- **If an urbanization is planned**, the municipality has to follow **a specific process with an authorized author** :
 - 1) making plans and report choosing between infrastructures, technical networks, landscape, architecture, natural and biological aspects
 - 2) assessing project effects on the environment
 - 3) submitting all the documents to a public consultation
 - 4) modifying the documents taking into account the citizens remarks
 - 5) submitting the final project to be approved by the walloon government ;
 - 6) performing a periodic evaluation of the project effects on environment and informing the public.

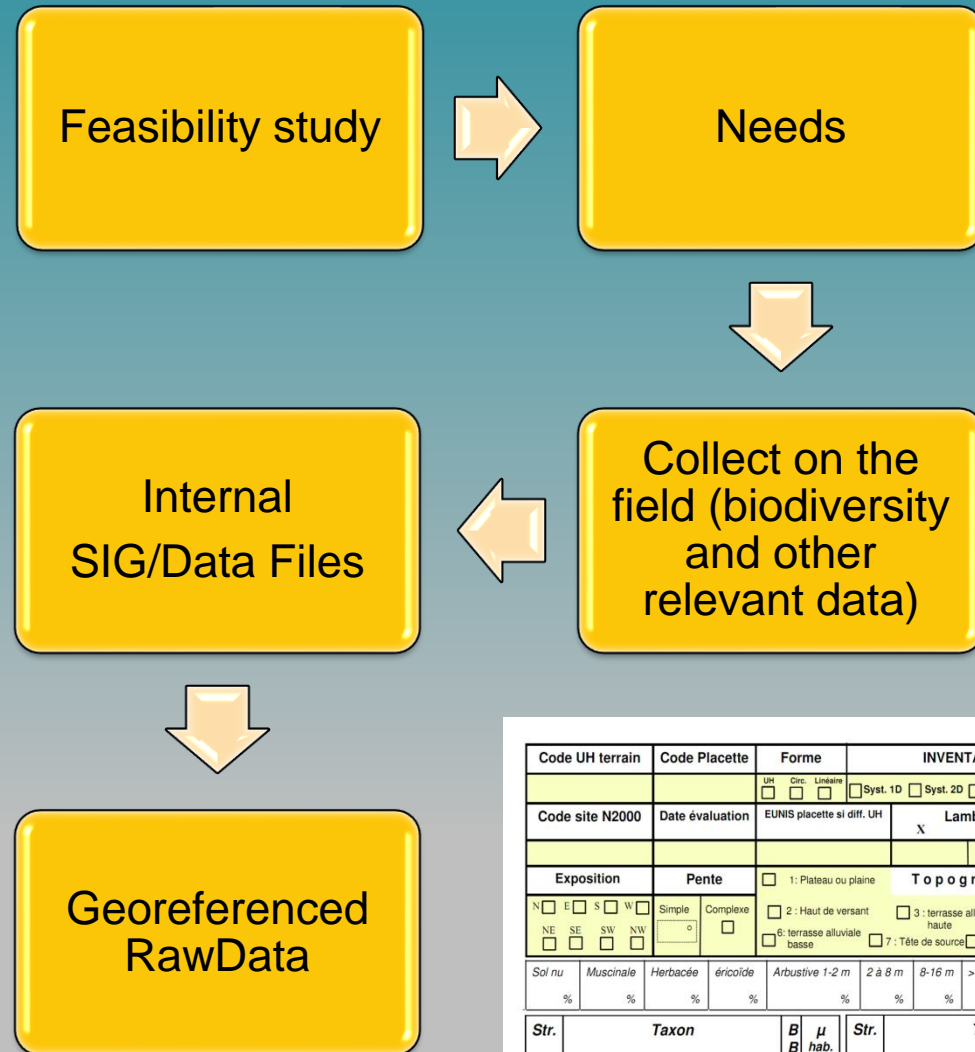
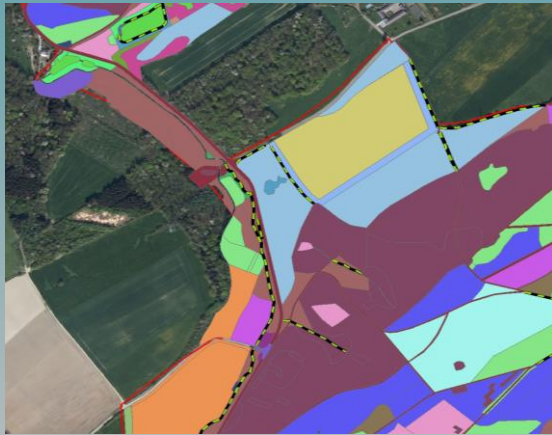
Data Collection and Recording

Actors



Data Collection and Recording

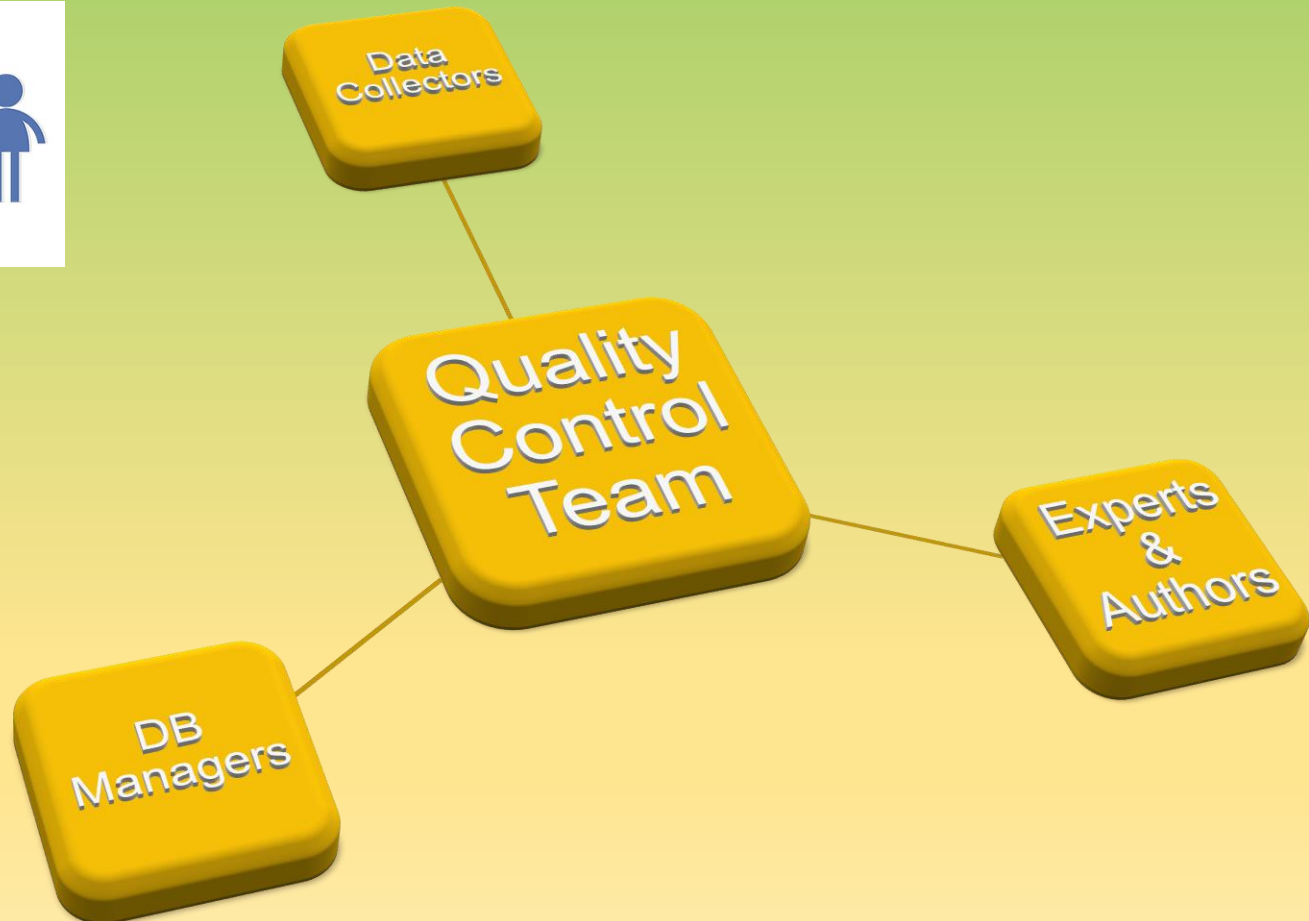
Biodata
flows



Code UH terrain	Code Placette	Forme	INVENTAIRE		Surface
		<input type="checkbox"/> UH <input type="checkbox"/> Circ. <input type="checkbox"/> Linéaire <input type="checkbox"/> Syst. 1D <input type="checkbox"/> Syst. 2D <input type="checkbox"/> Repr. <input type="checkbox"/> Aléa. <input type="checkbox"/> UHNC			
Code site N2000	Date évaluation	EUNS placette si diff. UH	X	Lambert Y	Opérateurs
Exposition		Pente	Topographie		
<input type="checkbox"/> N <input type="checkbox"/> E <input type="checkbox"/> S <input type="checkbox"/> W <input type="checkbox"/> NE <input type="checkbox"/> SE <input type="checkbox"/> SW <input type="checkbox"/> NW		<input type="checkbox"/> Simple <input type="checkbox"/> Complexe <input type="checkbox"/> 1: Plateau ou plaine <input type="checkbox"/> 2: Haut de versant <input type="checkbox"/> 3: terrasse alluviale haute <input type="checkbox"/> 4: Dépression marécageuse <input type="checkbox"/> 5: Milieu de versant <input type="checkbox"/> 6: terrasse alluviale basse <input type="checkbox"/> 7: Tête de source <input type="checkbox"/> 8: Bas de versant <input type="checkbox"/> 9: Fond de vallée			
Sol nu	Muscinale	Herbacée	éricoïde	Arbustive 1-2 m	2 à 8 m
%	%	%	%	%	8-16 m
					>16m
					ligneux en M.Ouvert > 1m
%	%	%	%	%	%
Str.	Taxon		B	μ	Str.
			B	hab.	

Data Validation and Management

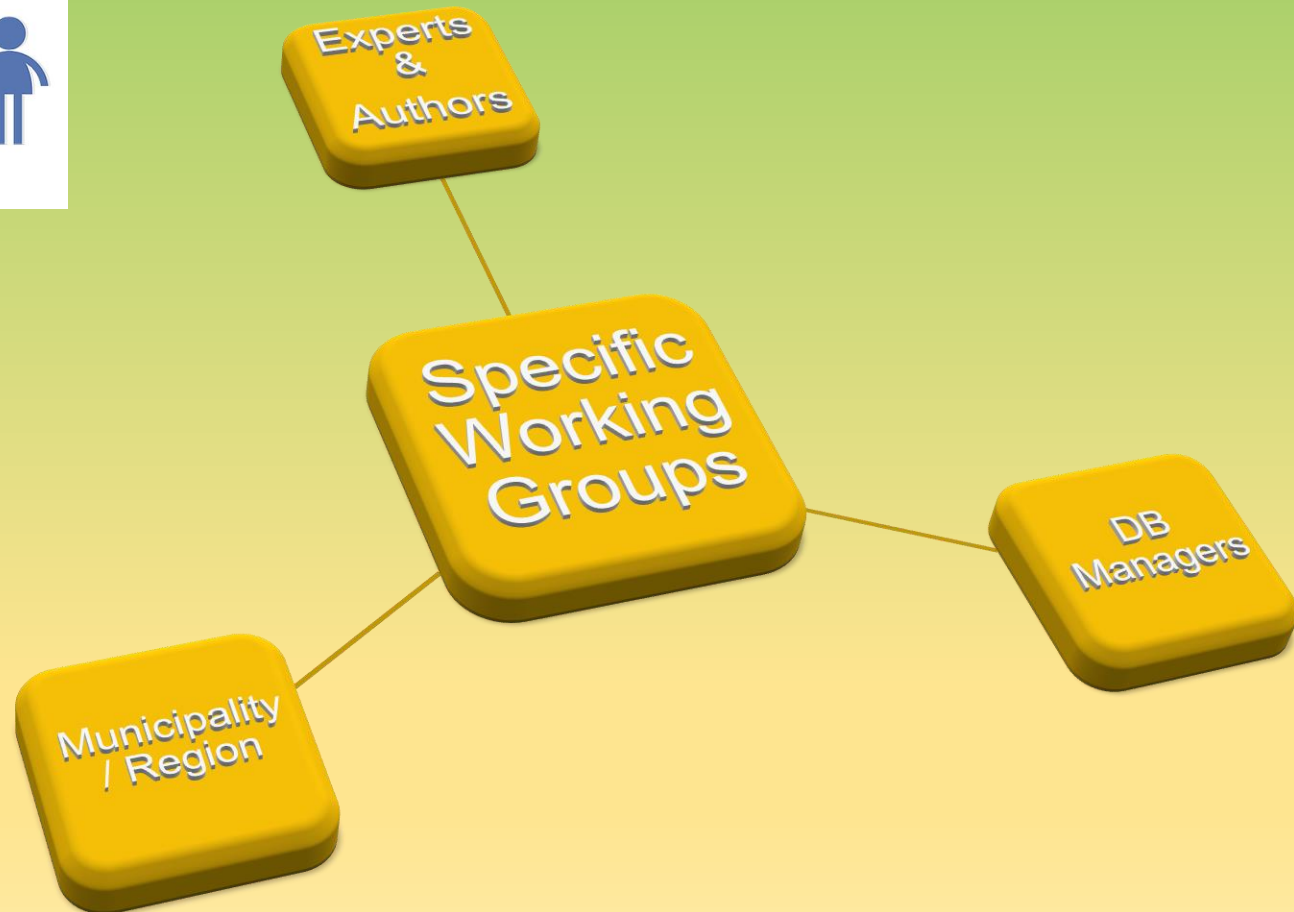
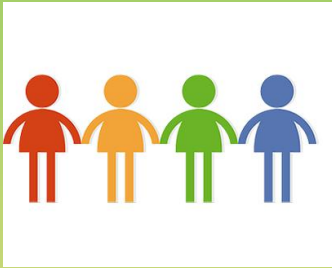
Actors





Analysis and information

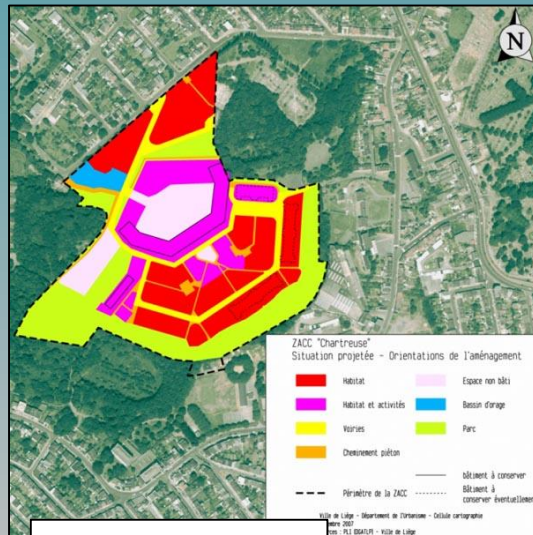
Actors



Analysis and information

1) project idea and 2) assessing the effects

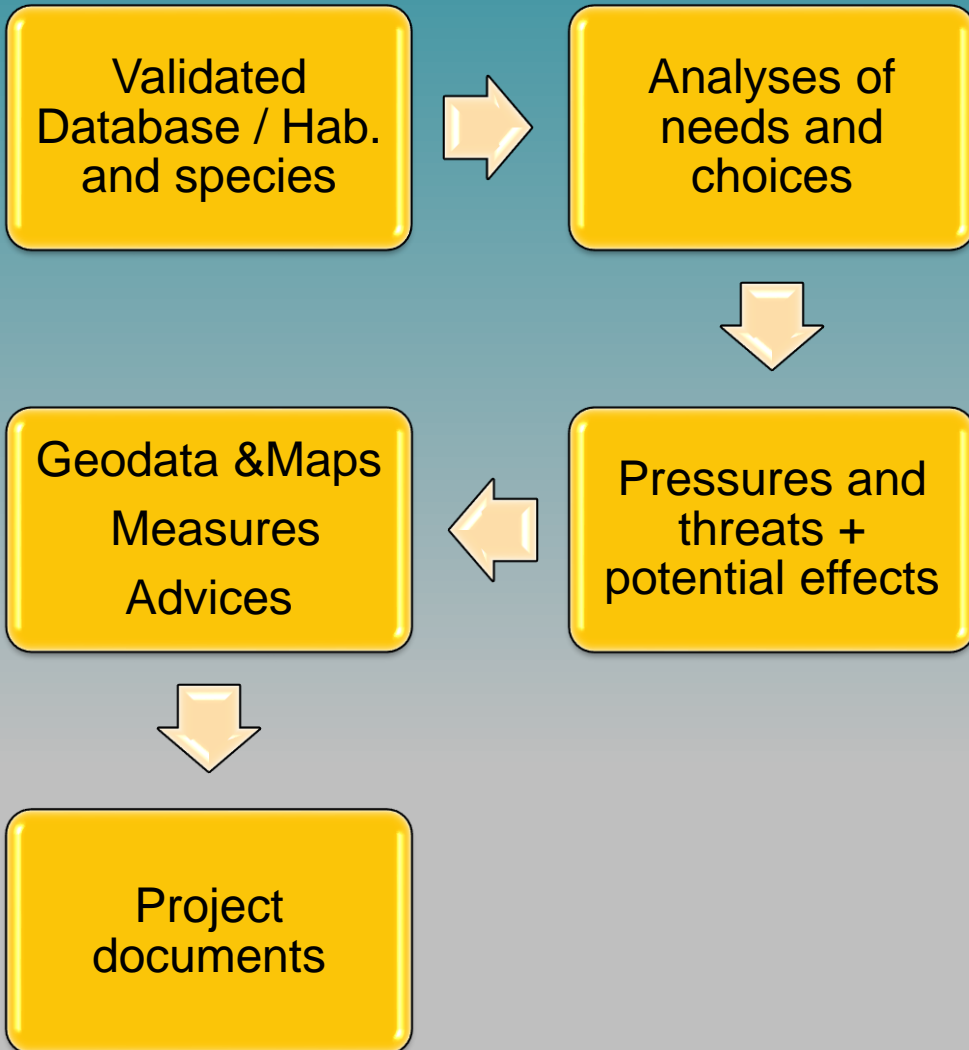
Biodata flows



RAPPORT URBANISTIQUE ET
ENVIRONNEMENTAL RELATIF À LA
ZONE D'AMÉNAGEMENT COMMUNAL
CONCERTE "WASTINELLE" SUR LE
TERRITOIRE COMMUNAL DE SILLY

oster

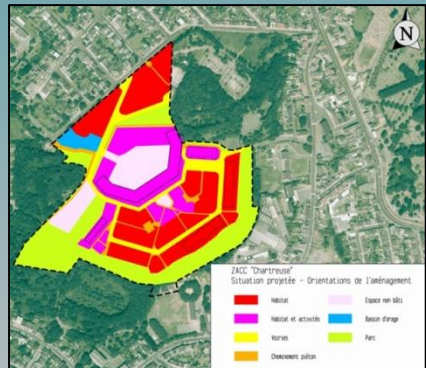
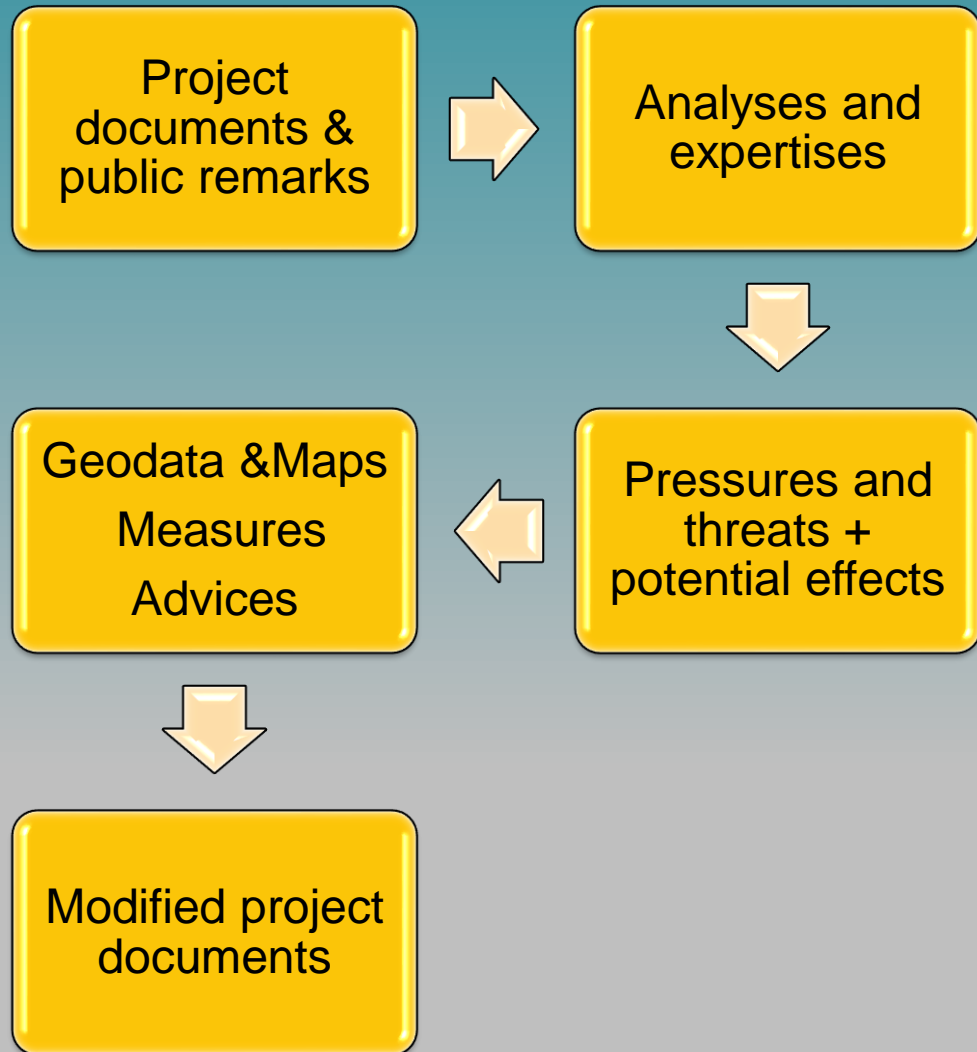
Rapport final du 15 octobre 2011



Analysis and information

3) public consultation and 4) modifying documents

Biodata
flows



RAPPORT URBANISTIQUE ET ENVIRONNEMENTAL

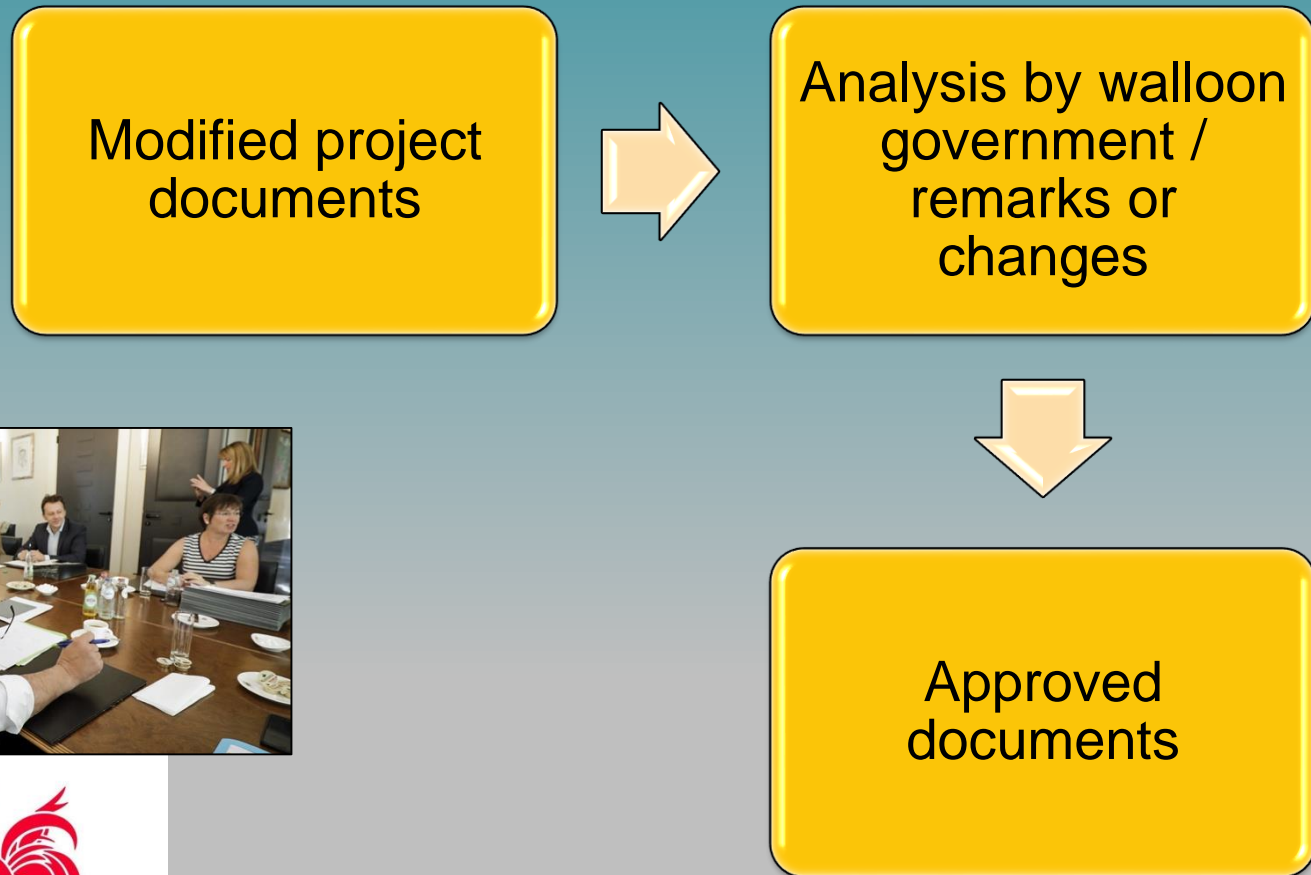
Enquête publique – 20 juin 2017



Analysis and information

5) approval by walloon government

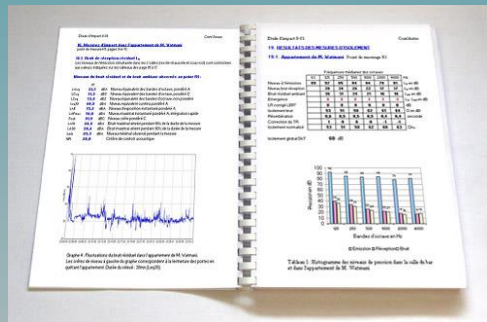
Biodata
flows



Analysis and information

6) periodic evaluation

Biodata flows

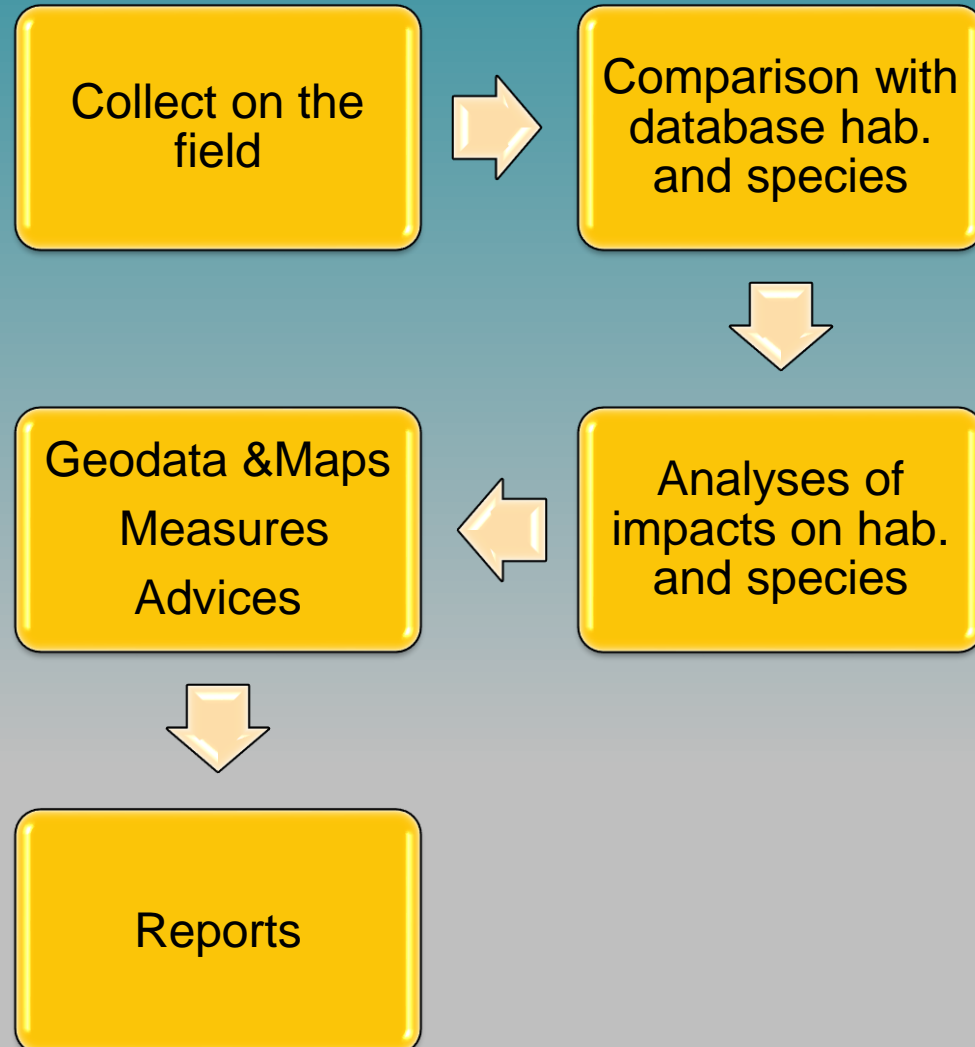


RECOMMANDATIONS "ENVIRONNEMENTALES" 63
préservations d'espèces remarquables :
exemples...

- Chauves-souris (10 espèces) ;
- Loutre, Moule perlière, Castor, Cistude,
- Gypaète, Grand tétras, Pic à dos blanc, Pic noir, Chouette de Tengmalm, Aigle botté, Circaète Jean-le-Blanc, Vautour moine, Faucon pèlerin,
- Bihoreau gris, Aigrette garzette, Faucon hobereau,
- Rosalia alpina, Lucane, Barbot...



Philippe Thévenin - Septembre 2007



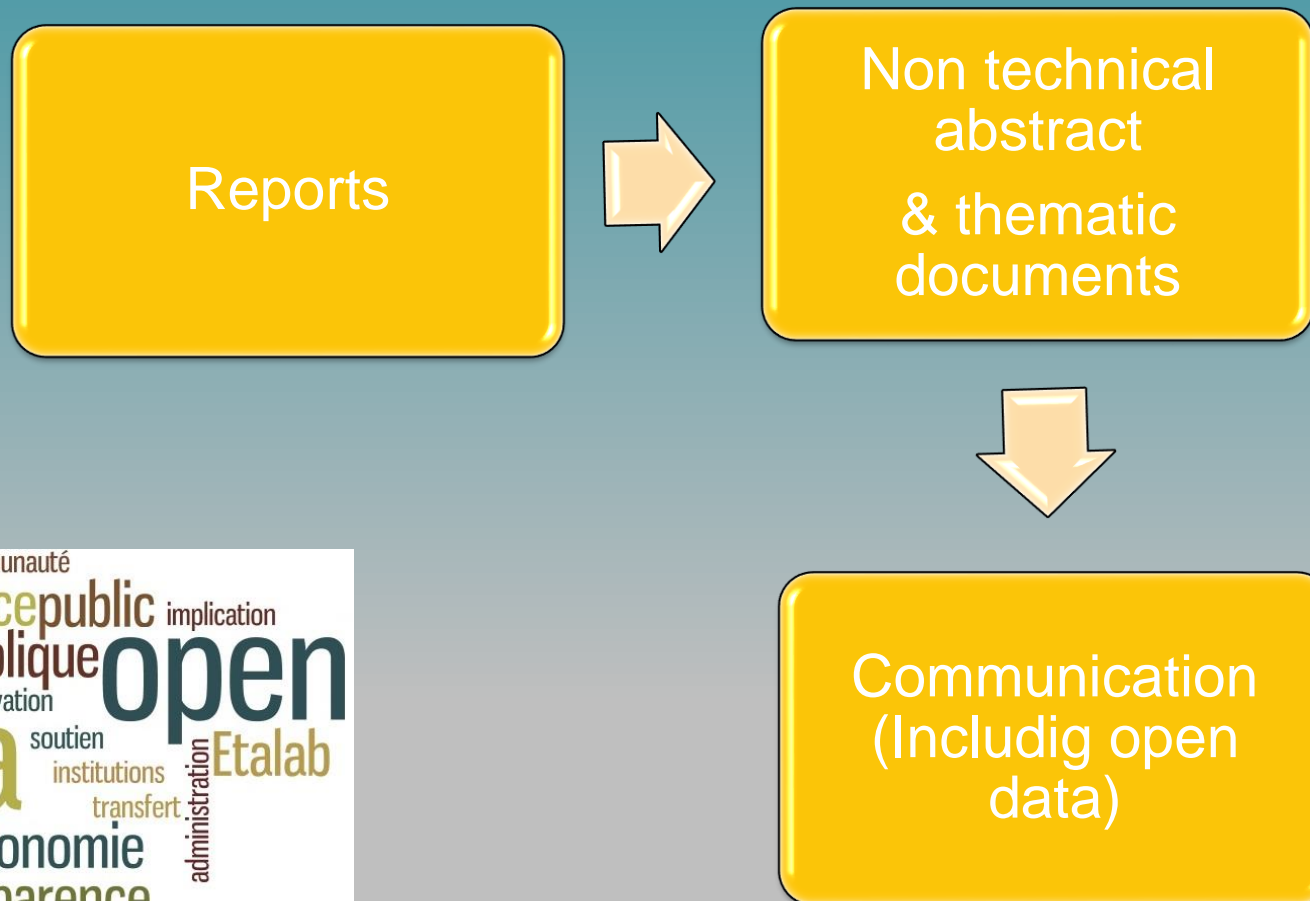
Communication

Actors



Communication

Biodata
flows



Assessment

PROCESSES

Data Collection and Recording		Data Validation and Management		Analysis & Information		Communication	
+	-	+	-	+	-	+	-
Intervention of a dedicated company to perform assessment => data quality improved	Some data are not easily available due to ownership issues	High level of expertise	<ul style="list-style-type: none"> - Lack of availability of experts - Huge amount of data to be checked 	High level of expertise	Negotiation process making concession compulsory	Broader communication level with specific tools targetting varied audience	High level of investment in terms of personal and financial resources necessary to reach communication objectives



BID-REX

Interreg Europe



European Union
European Regional
Development Fund

Thank you!

Questions welcome



www.interreg.eu/bid-rex