

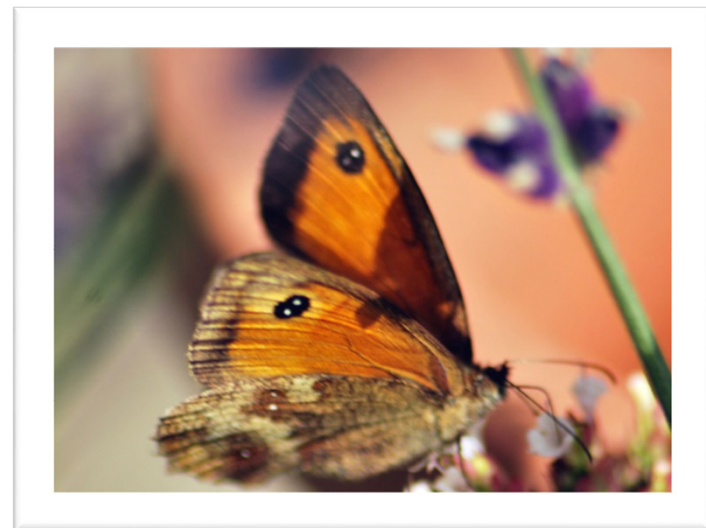


Putting Trust in Data

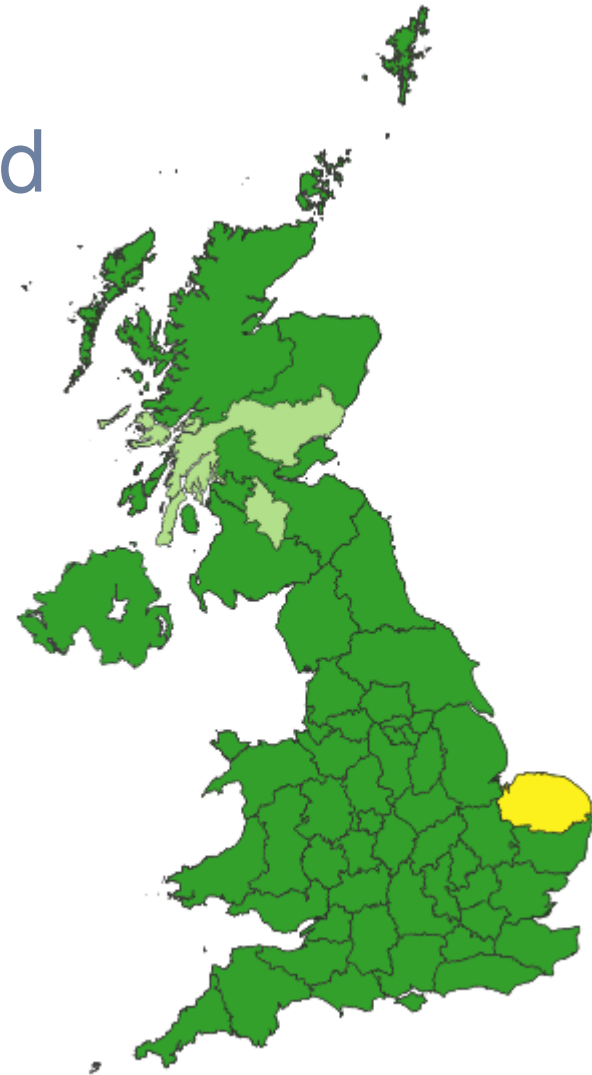
Tom Hunt

19th June 2018

An insight into data
verification, and the
accreditation scheme
established by the Association
of Local Environmental
Records Centres (ALERC).



Local Environmental
Records Centres collect and
manage ecological
information for a specific
location – usually a county
or group of counties or a
city.



Information comes from a range of sources. A very large source is citizens who collect species records because they enjoy doing it.



It is very important for decision makers to be able to trust this information.

Some important terms:

Verification – “...ensures the accuracy of the species identification” (NBN). Veritas = truth

Validation – Making sure the record is formed properly. Validus = strong.

Verifier – an expert who looks at records and casts judgement on the probability they are correct.

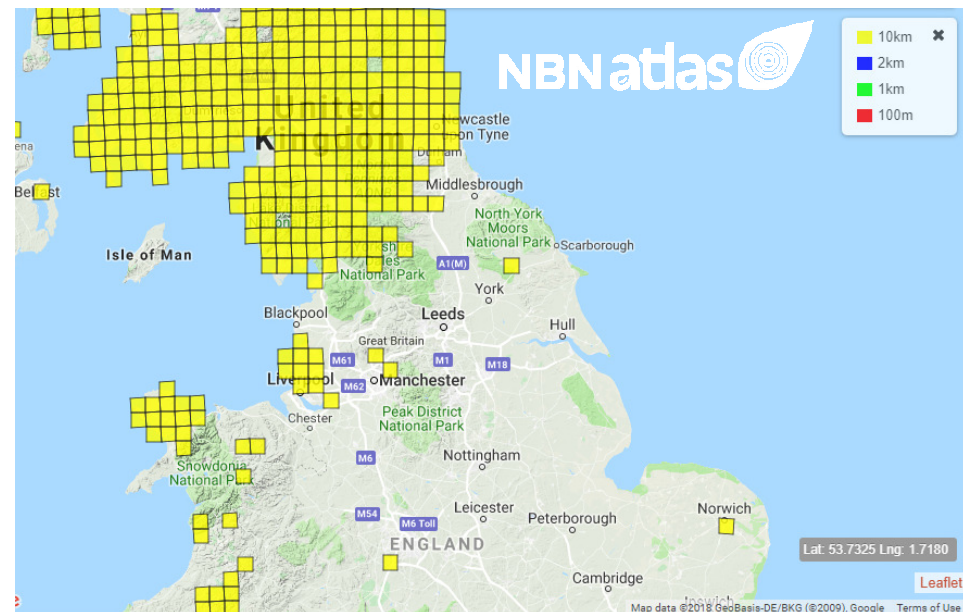
Quality – Can the records be trusted?

Verification

- Computer programs using rules e.g. flight time or geographic distribution.
- Experts looking at the record.

Validation

- Usually performed by computer programs.



Verification

Does it usually occur in that place?

Is it easy to identify?

Is the recorder an expert?

Can a photograph or specimen be supplied?



Accepted

Correct
Considered correct



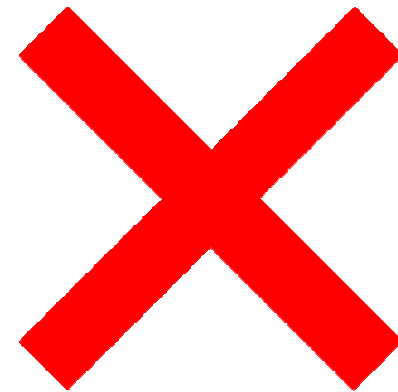
Unconfirmed

Plausible
Not reviewed



Not Accepted

Unable to verify
Incorrect



Questions and problems

Who are the verifiers, what are their credentials?

Are there enough of them?

Should they be volunteers or paid?

How can people make more accurate identifications?

Is there a greater role for machine verification and use of rules?

What about positive feedback?

These questions and more are being tackled by the NBN verification and data flow group.

Putting confidence in LERCs: ALERC Accreditation

LERCs assessed against twenty objective criteria

- Organisation Fundamentals
- Data Custodianship
- Products and Services

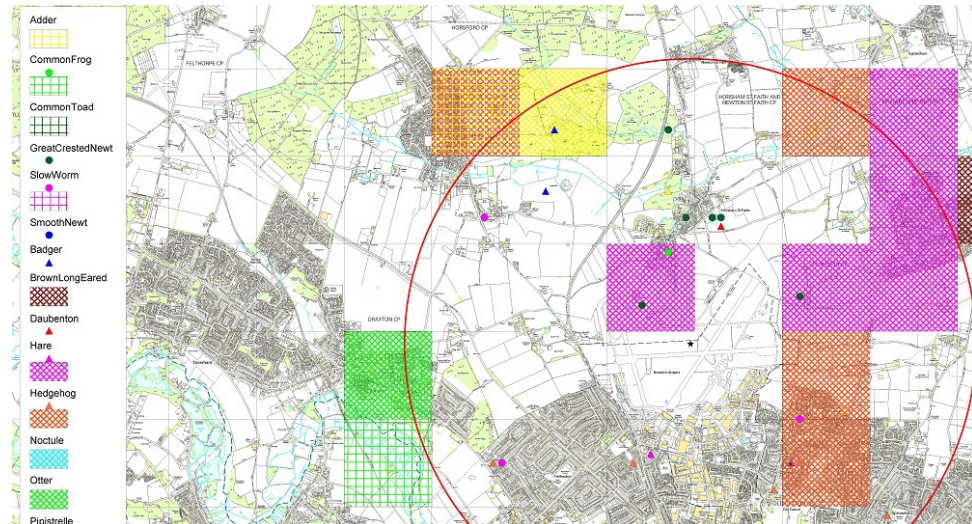


Selected criteria

1 The LERC is Stakeholder led

14 The LERC ensures quality control of its species and habitat data through validation and verification systems.

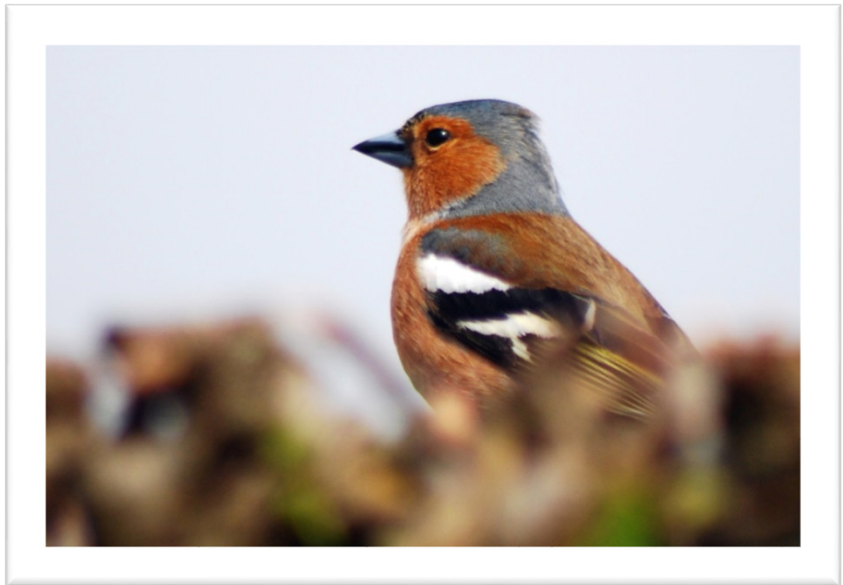
16.1 Geospatial data search of a project area showing statutory and non-statutory sites and recorded Priority / legally protected species.



Reassessments every five years.

Target to get everyone assessed by 2020.

Currently 15/40.



The most important way to gain trust?

Transparency