



BID-REX
Interreg Europe



European Union
European Regional
Development Fund

Norfolk Biodiversity Information Service a “one stop shop” for data and Information

Martin Horlock

Environment Manager (Information & Partnerships)

Norfolk County Council (UK)

Martin.horlock@norfolk.gov.uk

20th June 2018 | Bid-Rex Workshop

A one-stop shop for biodiversity data

What do we actually mean?

- Somewhere to get data? – Supermarket
- Somewhere to access information? – Library, newsagent
- Somewhere to contact experts? - helpline

A one-stop shop for biodiversity data

Who are our 'shoppers'?

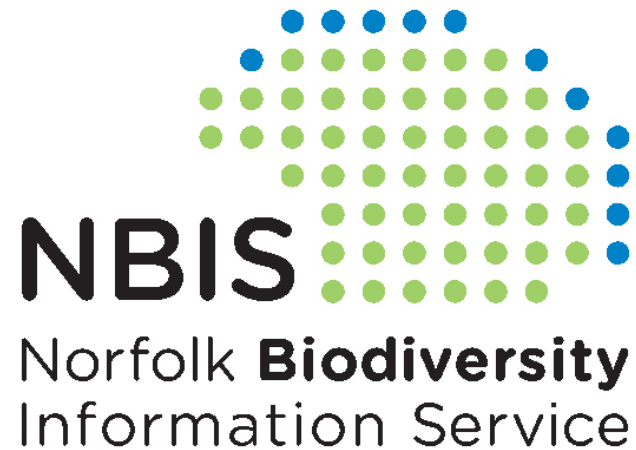
- Experts?
- Public?
- Academic?
- Government?
- Planners?

All have different needs and wants.

All have different ideas and assumptions about what we can do for them.

A one-stop shop for biodiversity data

Can we ever have a one-stop shop?



Norfolk Biodiversity Information Service

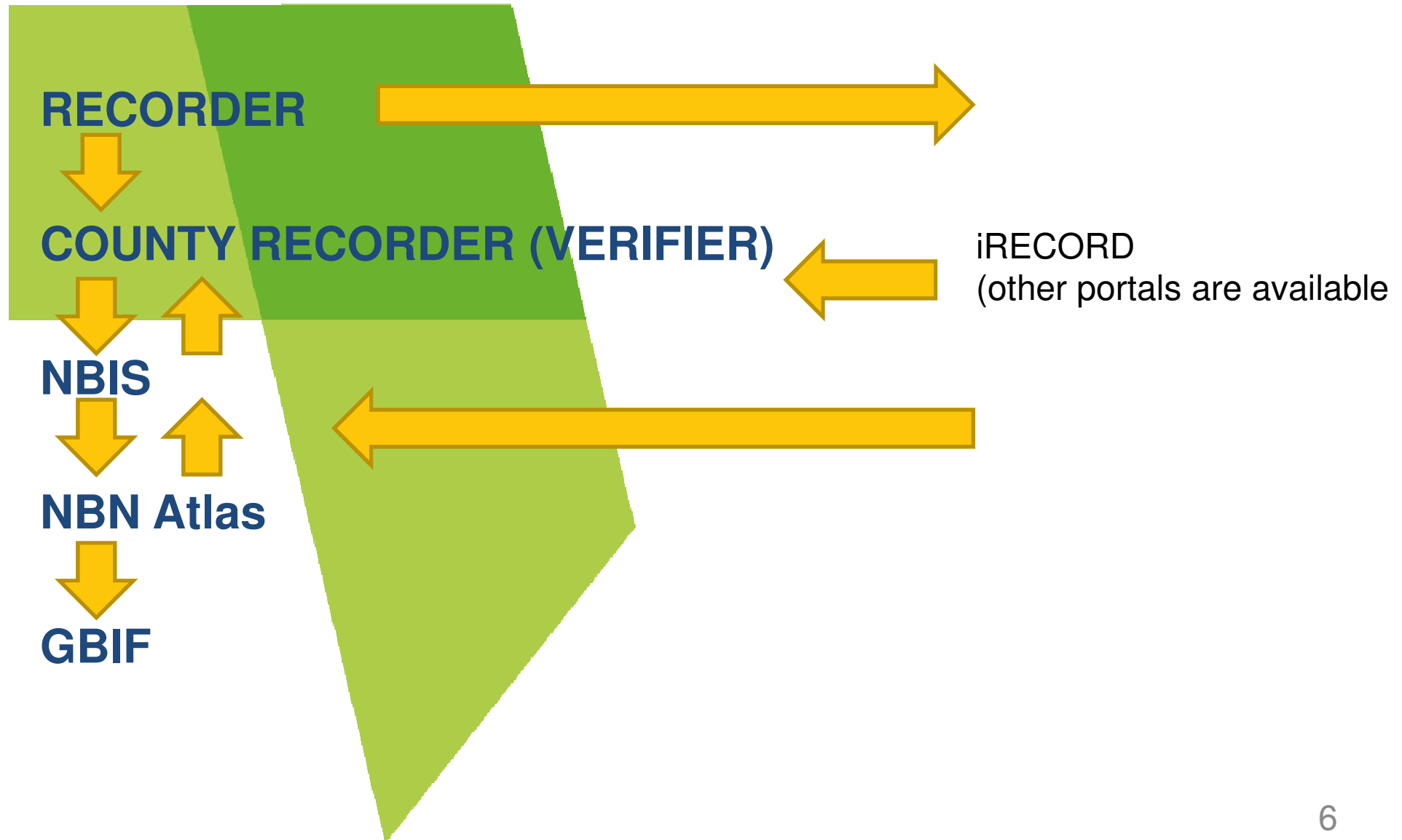
We have:

- 3250635 species records (1715185 also published to NBN Atlas)
- Habitat and land use mapped for the whole county
- Protected sites – boundaries and citations
- Modelled and interpreted information – GI asset and target maps, habitat opportunity maps etc.
- 'Other' data

Our users are:

- Conservation organisations
- Local Authorities
- Developers
- Academic research
- The public
- Anyone who needs to know about the wildlife of Norfolk

Norfolk Biodiversity Information Service





Norfolk Biodiversity Information Service

Number of each enquiry type processed each year:

	2013/14	2014/15	2015/16	2016/17
Commercial Searches	247	285	386	439
Non-commercial Searches	60	63	74	37
Partner Searches (Including Districts)	142	57	20	17
TOTAL	449	405	480	493

NBN Atlas usage:

- 2017 – 86 user downloads = 5997725 records
- 2018 – 50 user downloads = 9586223 records

Norfolk Biodiversity Information Service

Commercial consultants are key users and funders

Based on their requirements we have developed the **East of England standard service:**

- Defined list of datasets – species of conservation concern, protected sites, standardised data format
- Defined response times
- Cross boundary search arrangement (ask and pay once where search boundary in multiple counties)
- Clear metadata – spatial & temporal coverage, signposts to additional sources

Norfolk Biodiversity Information Service

Expenditure (in £)	2014-15	2015-16	2016-17
Staff salaries/training/travel	139052.36	94,778.42	66110.6
IT hardware/software & general equipment purchase	413.15	600.28	1812.04
Subscriptions (e.g. ALERC)	596.67	300.00	400.00
Contractor costs	4103.29	40246.24	1591.15
Venue hire	773.50	535.00	4.17
Printing/marketing/design	767.88	187.97	250.00
other/misc	78.00	102.32	86.80
Publications/NBIS recorders fund/Recorder support	18.06	556.86	2920.00
Budget adjustments/financials			15180.99
Match Funding		50525.00	
Total expenditure	145802.91	187832.09	88355.75

Income (in £)	2014-15	2015-16	2016-17
Data Searches	-22095.00	-39,115.00	-47,615.00
Project work/other charges	-82592.75	-2222.46	-5852.00
Service Level Agreements with Local Authorities/IDBs	-34000.00	-11000.00	
Service Level Agreements with utilities		-1125.00	-2700.00
Service Level Agreements with Defra bodies	-22600.00	-17600.00	-12600.00
Recharge (other departments)	-4.93	-31296.00	
Match Funding		-30500.00	
Total income	-161292.68	-132858.46	-68,767.00

Transactions balance (in £)	-15489.77	54973.63	19,588.75
------------------------------------	------------------	-----------------	------------------

Norfolk Biodiversity Information Service

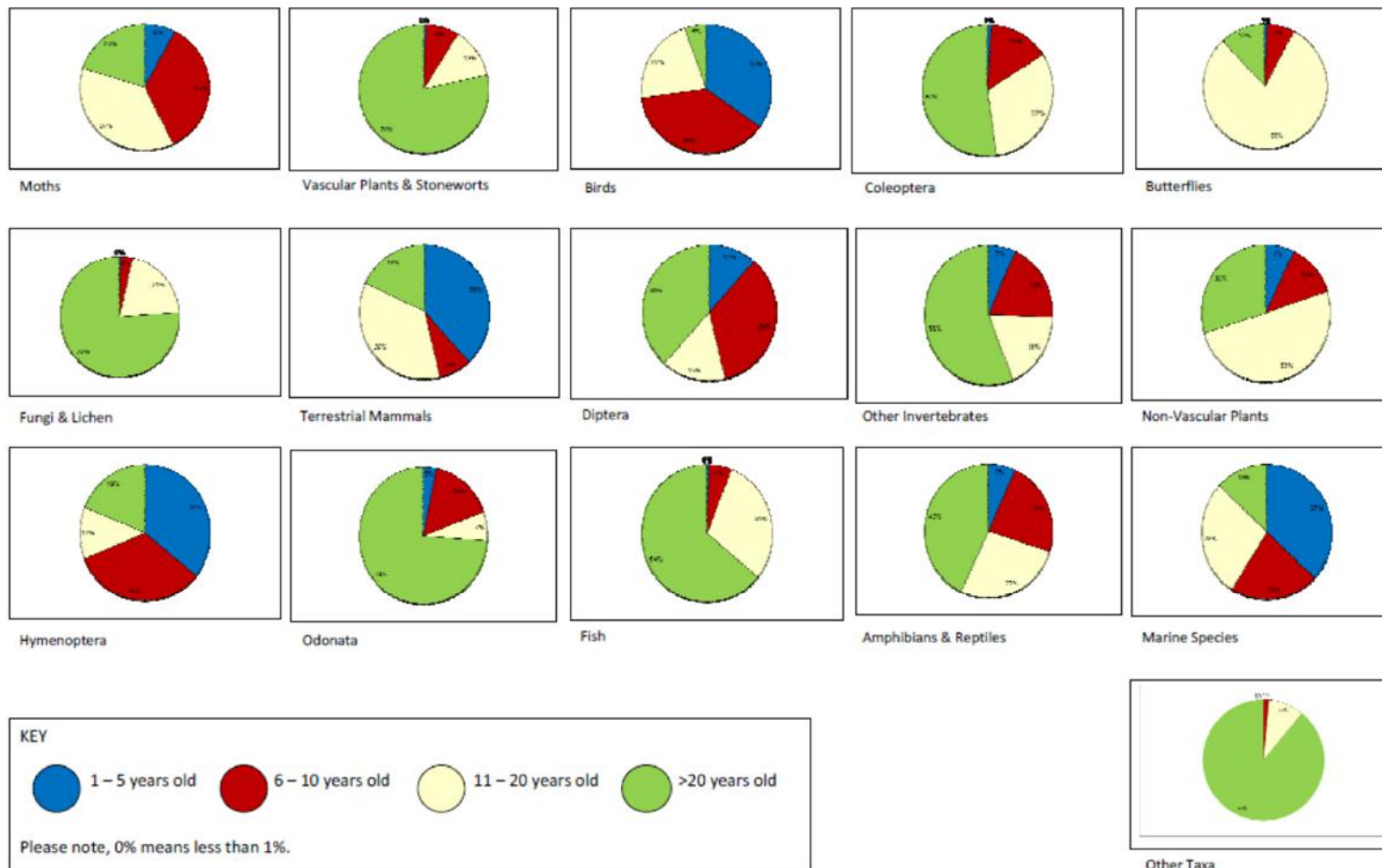
However we DON'T have:

- NBN Atlas data
- National Schemes and Societies data
- Local recorder data
- iRecord
- ???

Norfolk Biodiversity Information Service

We also have some gaps! (And tell people about them)

Records Currency by Taxon Group



Stocking the one-stop shop

How can we fix the holes?

- Work with NBN Atlas and others to mobilise more data
- Use accreditation to unlock data from other data holders
- Develop relationships with recorders
- Signpost additional data
- Increase and encourage data collection in the gaps

Can we ever build a truly one-stop shop?

Probably not – though we are getting there e.g. NBN Atlas, LERCs

Does that matter?

Can we ever build a truly one-stop shop?

How can we stay fit for purpose?

In Norfolk we:

- Ensure key policies drive our data collection
- Focus on key species
- Focus on work that helps GI provision
- Co-ordinate impact monitoring
- Collect structured data
- Support data collection – including funding for local recorders
- Develop ways to better access to data – more to NBN Atlas/GBIF, online recording & access



Thank you

Martin Horlock

Environment Manager (Information & Partnerships)

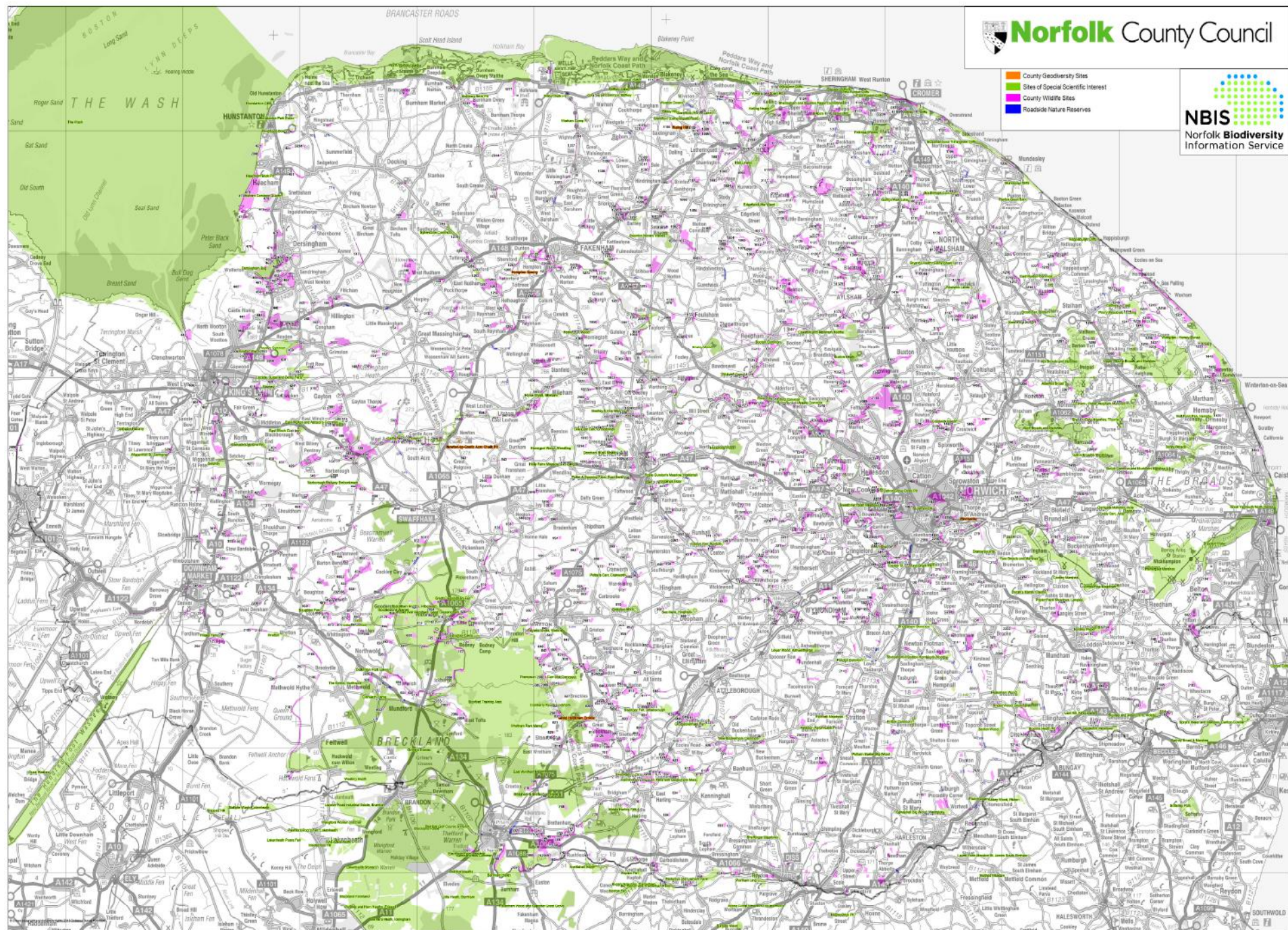
Norfolk County Council (UK)

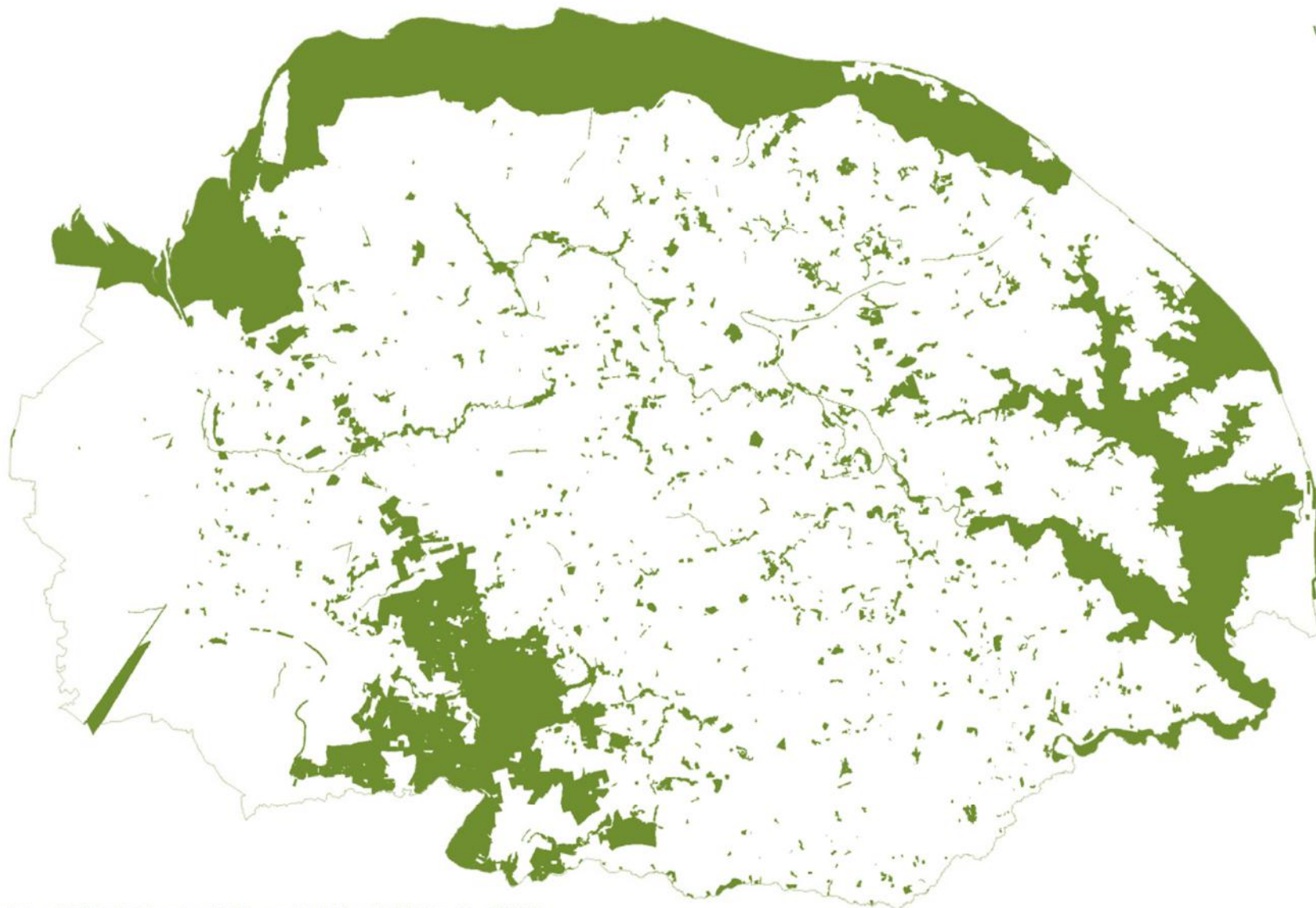
Martin.horlock@norfolk.gov.uk

Norfolk Broad Habitat Map



Map created by Environment Systems Ltd. 2015.
 Created using satellite imagery and ancillary datasets from 2011-2012. Developed from pilot stage
 analyses from the project 'Making Earth Observation Work for UK Biodiversity - Phase 2'.
 Contains Ordnance Survey data © Crown copyright and database right 2015.





© Natural England copyright 2015. Contains Ordnance Survey data. © Crown copyright and database rights 2015 Ordnance Survey 100019340

Designated Sites in Norfolk

Scale 1:300000

Compiled by NBIS on 29 February 2016

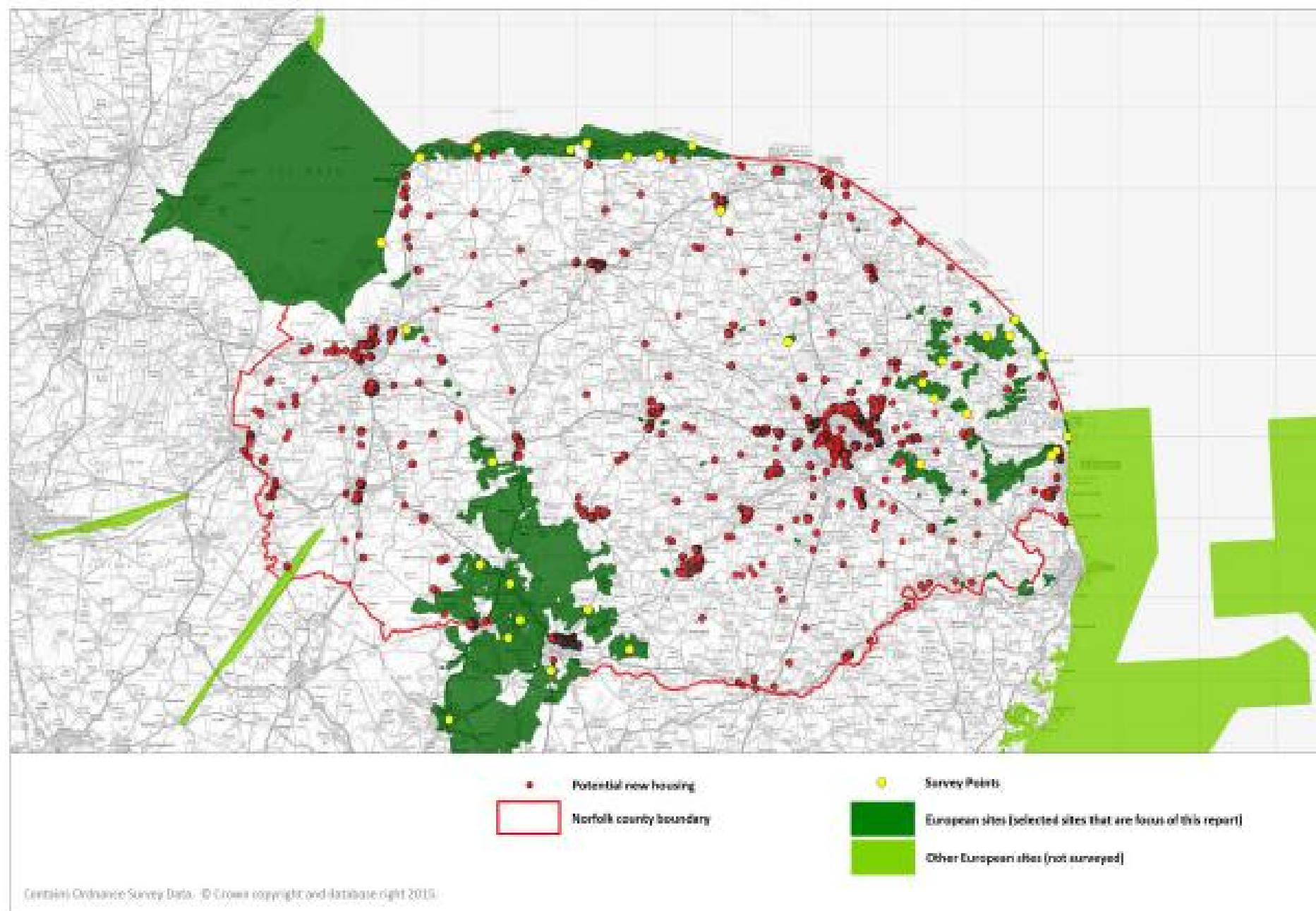


Norfolk **Biodiversity**
Information Service

Norfolk Biodiversity Information Service
County Hall
Martineau Lane
Norwich NR1 2SG

Tel: 01603 224458 Fax: 01603 223219

Map 20: Potential new housing and European sites where visitor surveys took place





Visitor surveys at European
protected sites across Norfolk
during 2015 and 2016

Key findings:

16% increase in housing

14% increase in visitors to sites

- Brecks 30%
- Valley Fens 28%
- Roydon & Dersingham 15%
- Broads 14%
- East Coast 11%
- Nort Norfolk 9%
- Wash 6%

Over 50% visiting from home and residents

16% travelling from home on short visit or day trip
from outside Norfolk

Dogwalking (41%) and walking 26% most popular activities

One third on holiday

77% arrived by car

One third aware of designation/conservation importance

Roydon Common

Data

96% of visitors were on a **Short Visit From Home**

80% of all visitors from postcodes within 5km

71% of dogs were seen off leads

Predictions

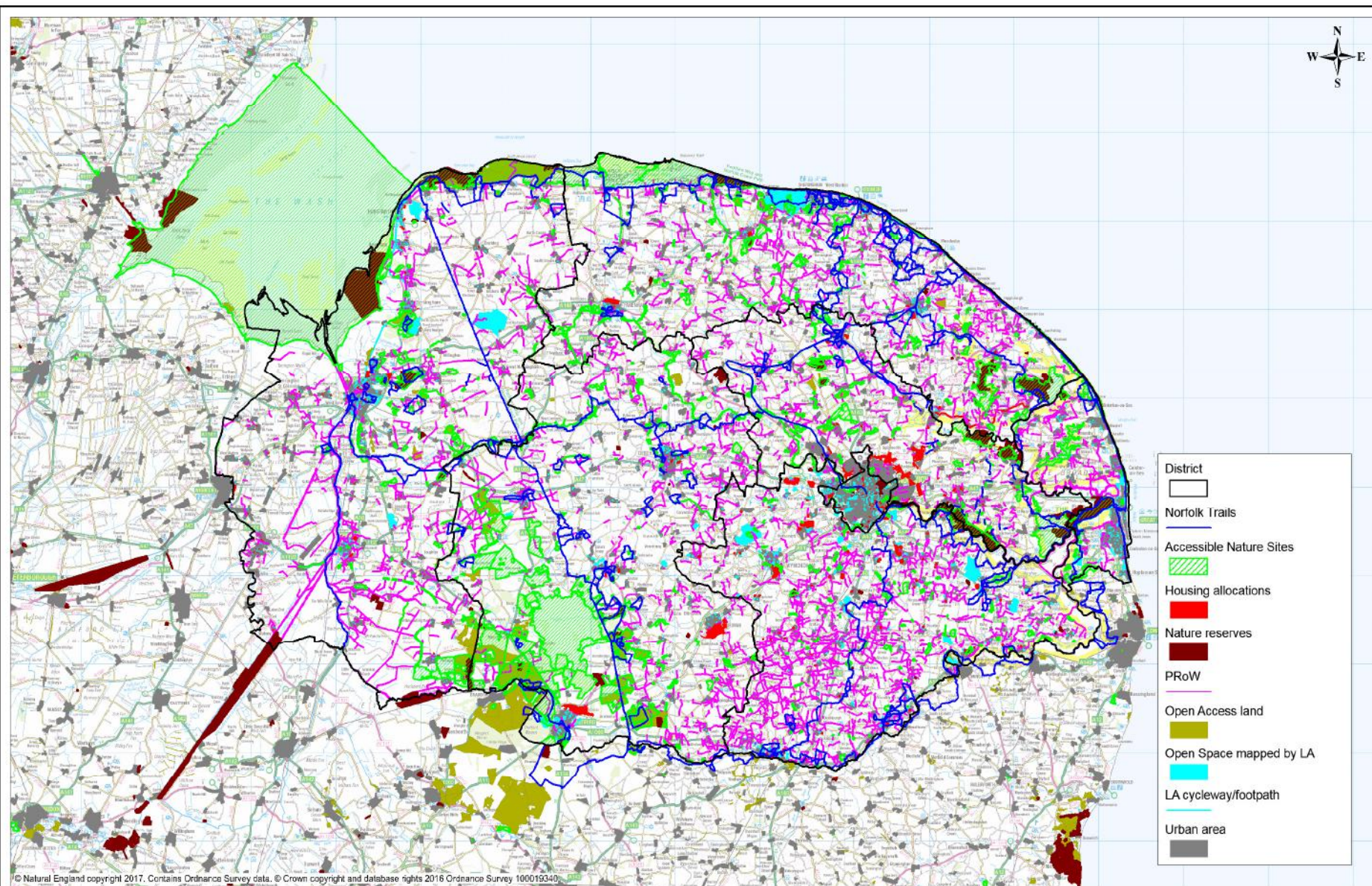
Residents from NEW homes within 5km are likely to visit

Proposed new homes as a % of existing homes

14% increase

5km



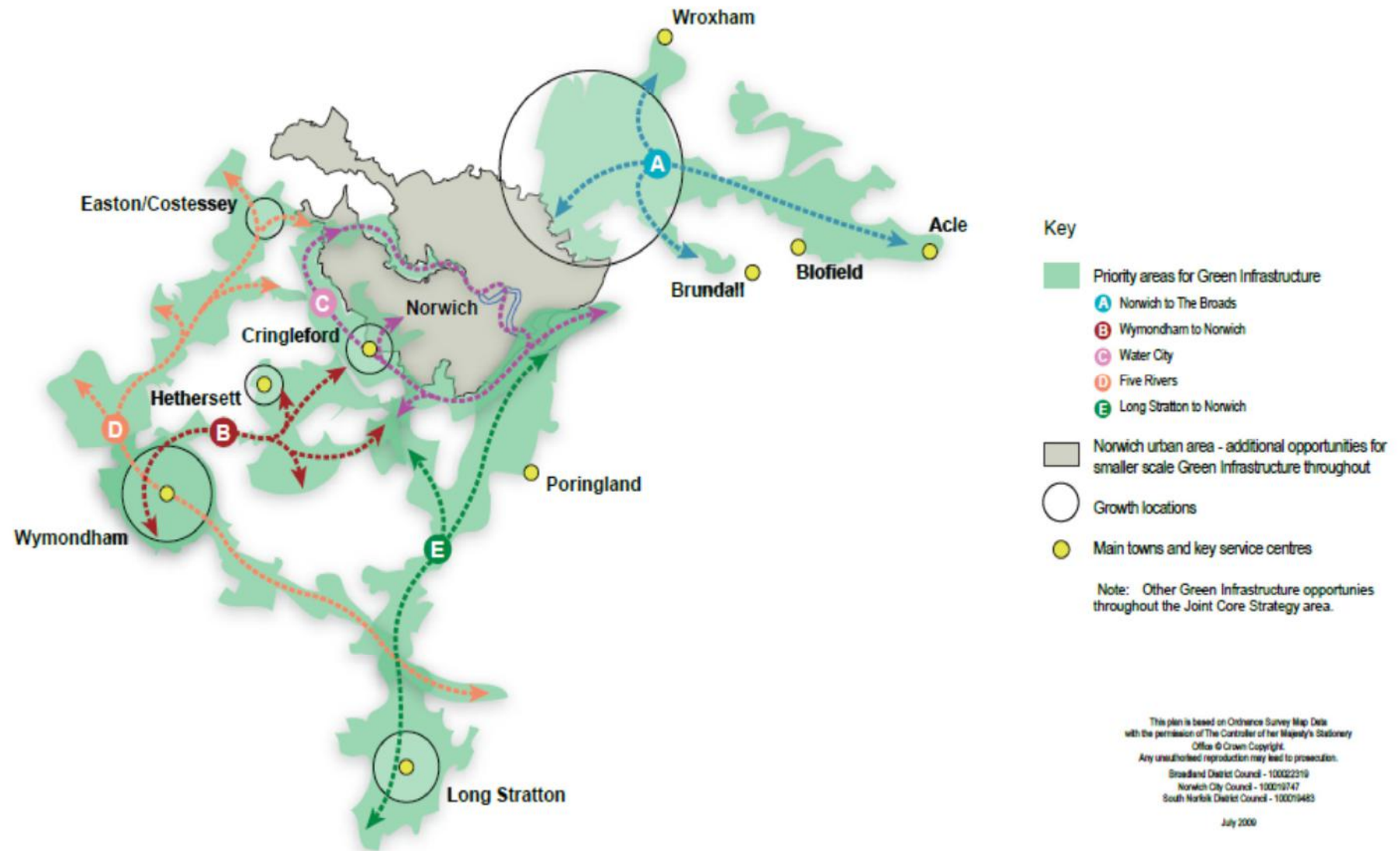


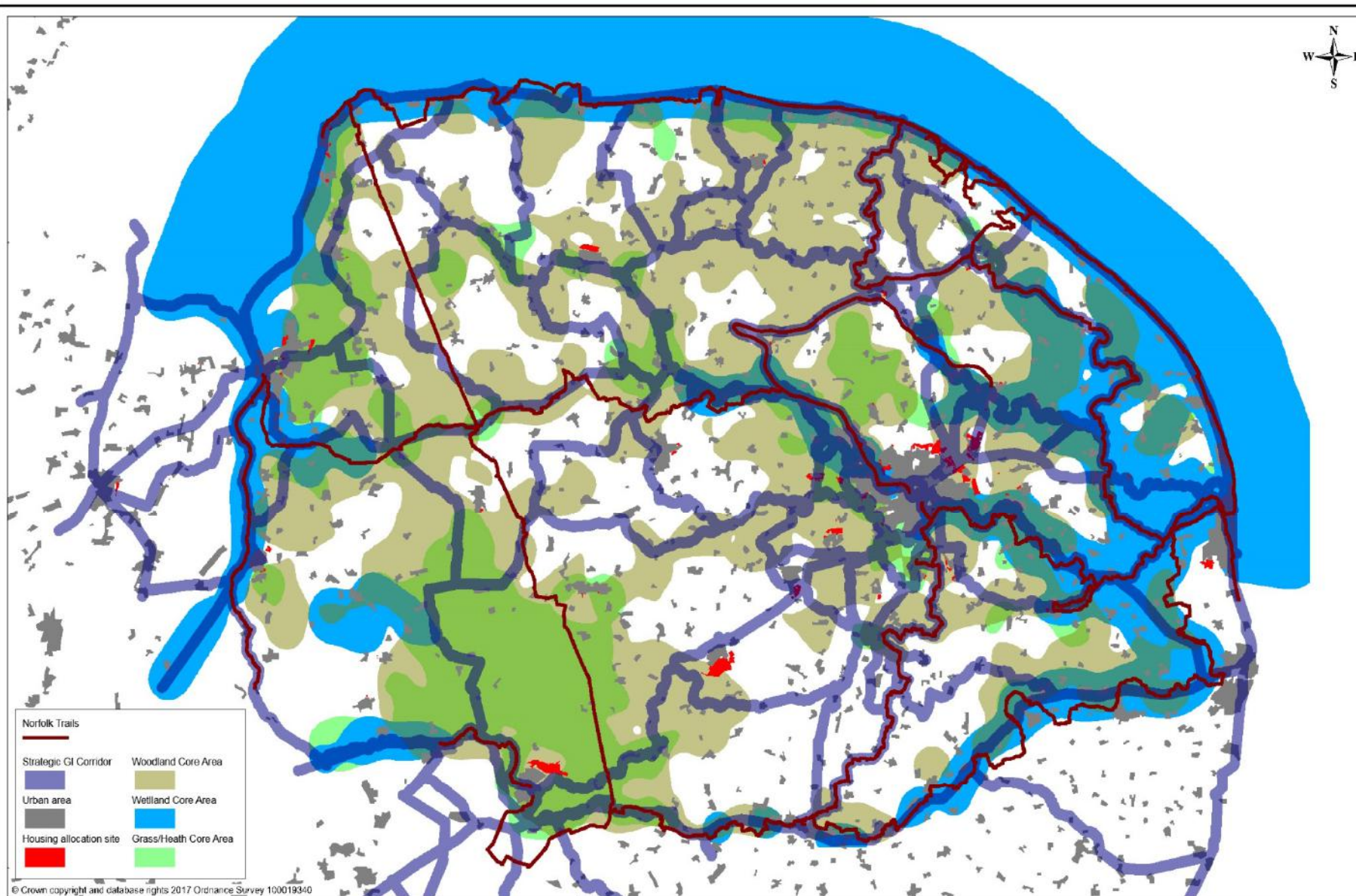
Current GI Assets

Scale 1:400000

Compiled by K Rushen on 24 October 2017

Green Infrastructure Priority Areas Supporting Key Growth Locations





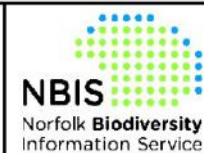
© Crown copyright and database rights 2017 Ordnance Survey 100019340

Norfolk Green Infrastructure Map

Strategic GI corridors and habitat core areas

Scale 1:350000

Compiled by M. Horlock on 18 October 2017



Norfolk Biodiversity Information Service
County Hall
Martineau Lane
Norwich NR1 2SG

Tel: 01603 224458 Fax: 01603 223219