



SMART-MR
Interreg Europe



Reflections from the SMART-MR project

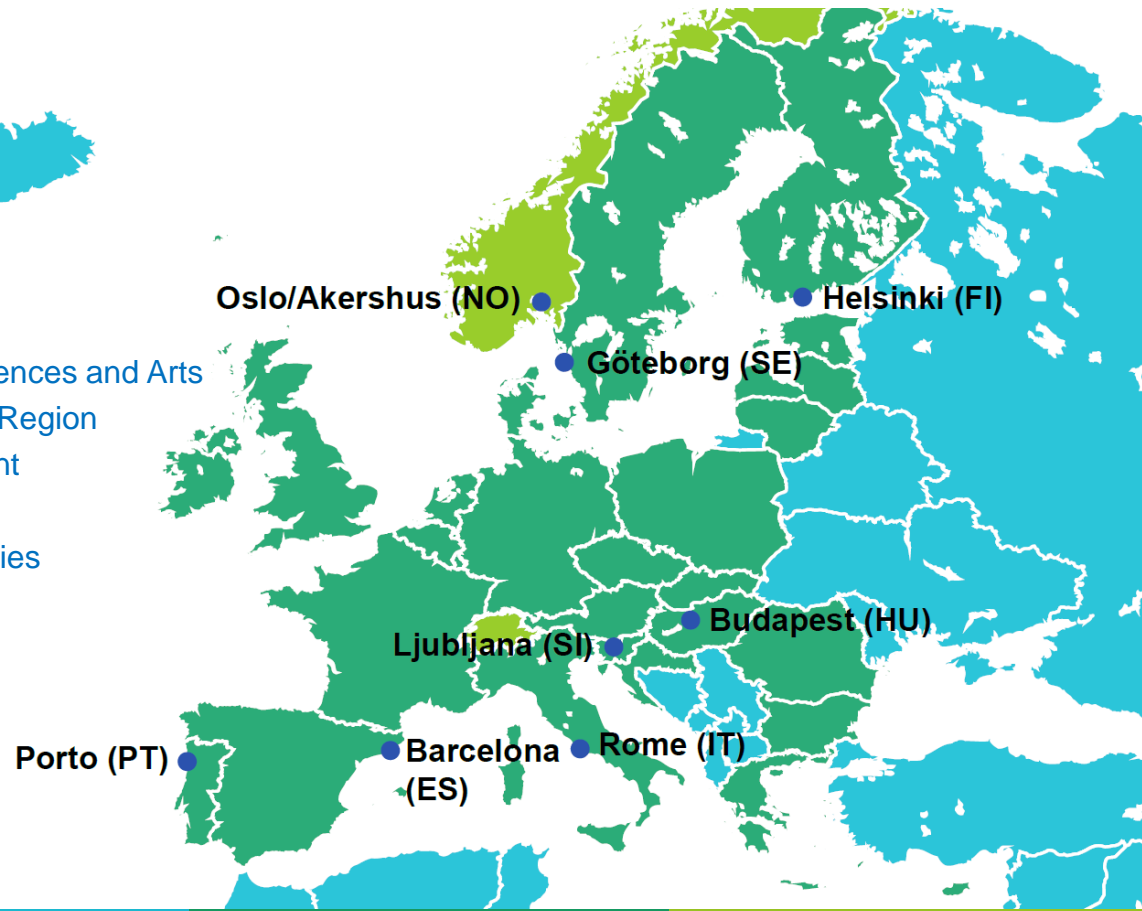
Dr. Janez Nared

ZRC SAZU, Anton Melik Geographical Institute

janez.nared@zrc-sazu.si

26 November, 2020 | SMART-MR Final Conference

Interreg as interregional exchange of experiences



Partners:

- Research Centre of the Slovenian Academy of Sciences and Arts
- Regional Development Agency of Ljubljana Urban Region
- The City of Oslo, The Agency of Urban Environment
- Viken County Council
- The Göteborg Region Association of Local Authorities
- Helsinki Region Environmental Services Authority
- BKK Centre for Budapest Transport
- Metropolitan City of Rome Capital
- Porto Metropolitan Area
- Barcelona Metropolitan Area

Contextualizing policies at all the territorial levels





Expert vs. subjective knowledge

Competent partners and stakeholders Mutual cooperation went beyond the project activities



Inspiring good practices

Metropolitan regions as trendsetters

Topics from the workshops

Participatory transport planning

Creating a regional mobility plan

Low-carbon logistic planning

Development of and around transport nodes

Shaping low-carbon areas

Sharing economy in mobility

Managing transportation

Participatory transport planning

Participation process is a must

Deliberate planning and implementation of participation process

Knowing the differences among regional and local level

The involved stakeholders: types and perspectives

Participatory process between planning and communication

Creating a regional mobility plan

Preliminary actions for making sustainable mobility plans

Improving the quality of a sustainable mobility plan

Mobility plan vs. other sectoral plans (land-use, development), and in relation to various territorial levels

Potential of data

Low-carbon logistic planning

Sustainability and low-carbon logistics planning

Cooperation between planning levels and the private sector

Promotion of clean vehicles and alternative fuels and modes of transport

Setting up a demonstration project for inner city logistic

Development of and around transport nodes

Transit-oriented development (TOD)

Integrated transport and land-use planning

From TOD to LOAD (Liveability-Oriented Area Development)

Three dimensions of development: economic, environmental and social

An area developed with dense housing, mixed use and liveability targets will create attractiveness

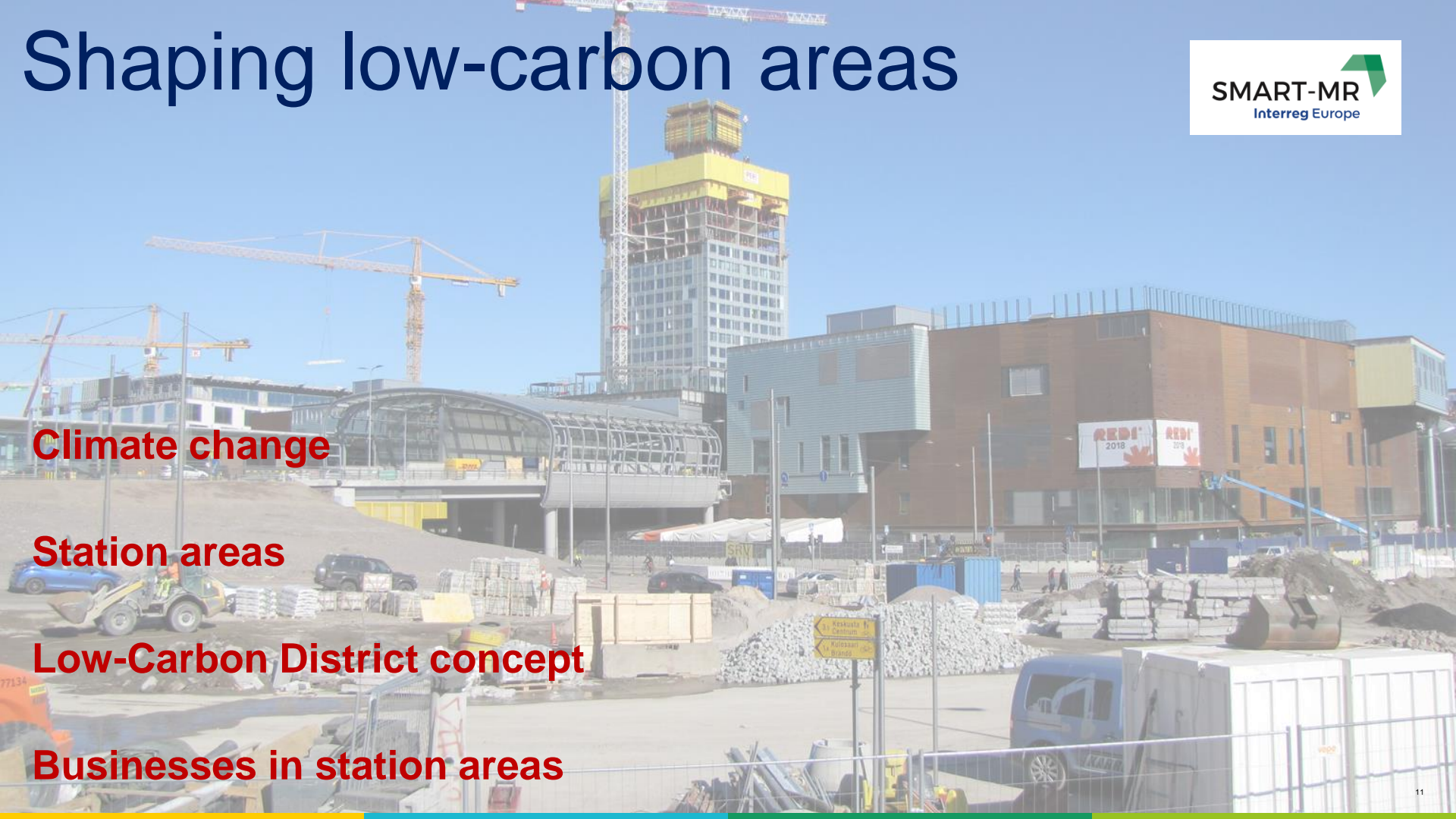
Shaping low-carbon areas

Climate change

Station areas

Low-Carbon District concept

Businesses in station areas



Sharing economy in mobility

Regulation is needed

Taxation: sharing models vs. public transport

Various business models are booming

Managing transportation



Institutional questions, strategies, policies

Mobility as a Service (MaaS), data related questions, ITS

Demand responsive transport (DRT), public transport, bus fleets

Shared solutions, autonomous vehicles

SMART-MR RESULTS:

Guide

Newsletters



Policy recommendations

Good practices

Action plans

Guidelines on developing station areas

TRANSFORMING EUROPEAN METROPOLITAN REGIONS

*Smart mobility
for better liveability*

SMART-MR: Sustainable Measures for
Achieving Resilient Transportation in
Metropolitan Regions

Impacts

Changing the policies at the regional level

Transfer of good practices

Vividness of partner's organisation pushing the activities further, always supporting new ideas and better solutions

Networking at the transnational level have triggered cooperation at the regional level



SMART-MR

Interreg Europe



Thank you!

Questions welcome

Photo credits: Marko Zaplatil, Janez Nared, Marc Iglesias Perez,
Nuppu Hepo-Oja, Silvia Cassorran, Dávid Nyitrai, AMP/CEiia