



**SMART-MR**  
Interreg Europe



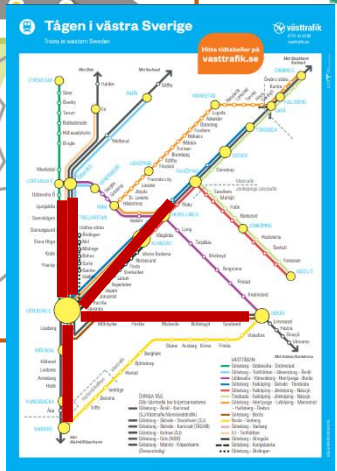
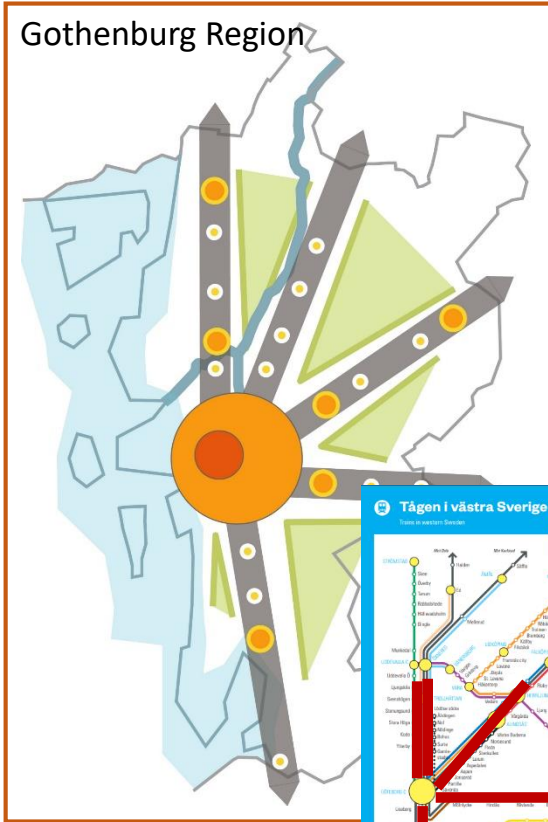
# Practical Guide on Station Area Concept and Implementation

**Moderator: Mariona Conill de Azpiazu**

**Panelists: Aino Hatakka, Per Kristersson, Janez Nared, Anna  
Ulvehed, Antti Mentula**

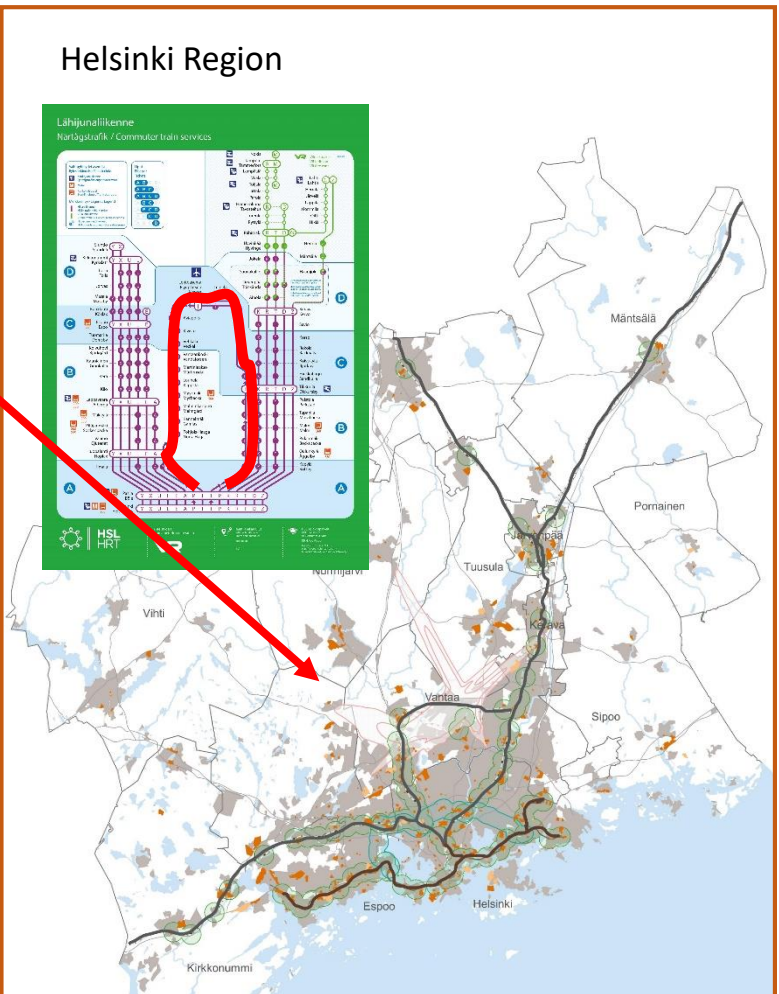
26 November, 2020 | SMART-MR Final Conference

# Structural illustrations & Rail infrastructure



**SMART-MR**  
Interreg Europe

European Union  
European Regional  
Development Fund



# FOUNDATION



Comprehensive approach  
suggested by the  
SMART-MR



## TRANSFORMING EUROPEAN METROPOLITAN REGIONS

*Smart mobility  
for better liveability*

**SMART-MR:** Sustainable Measures for  
Achieving Resilient Transportation in  
Metropolitan Regions



# Step 1: Polycentric settlement system

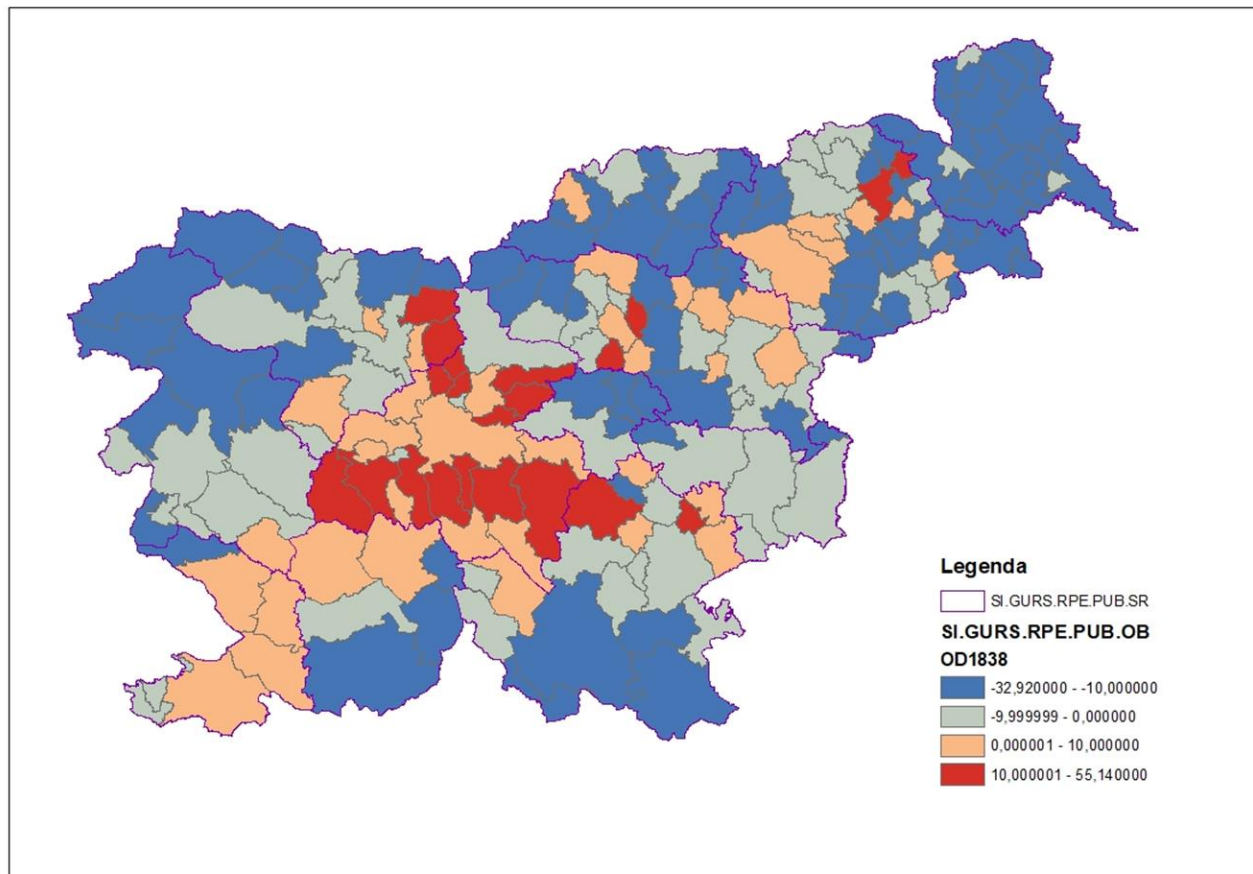
## Criteria:

Population growth

Provision of services of general interest

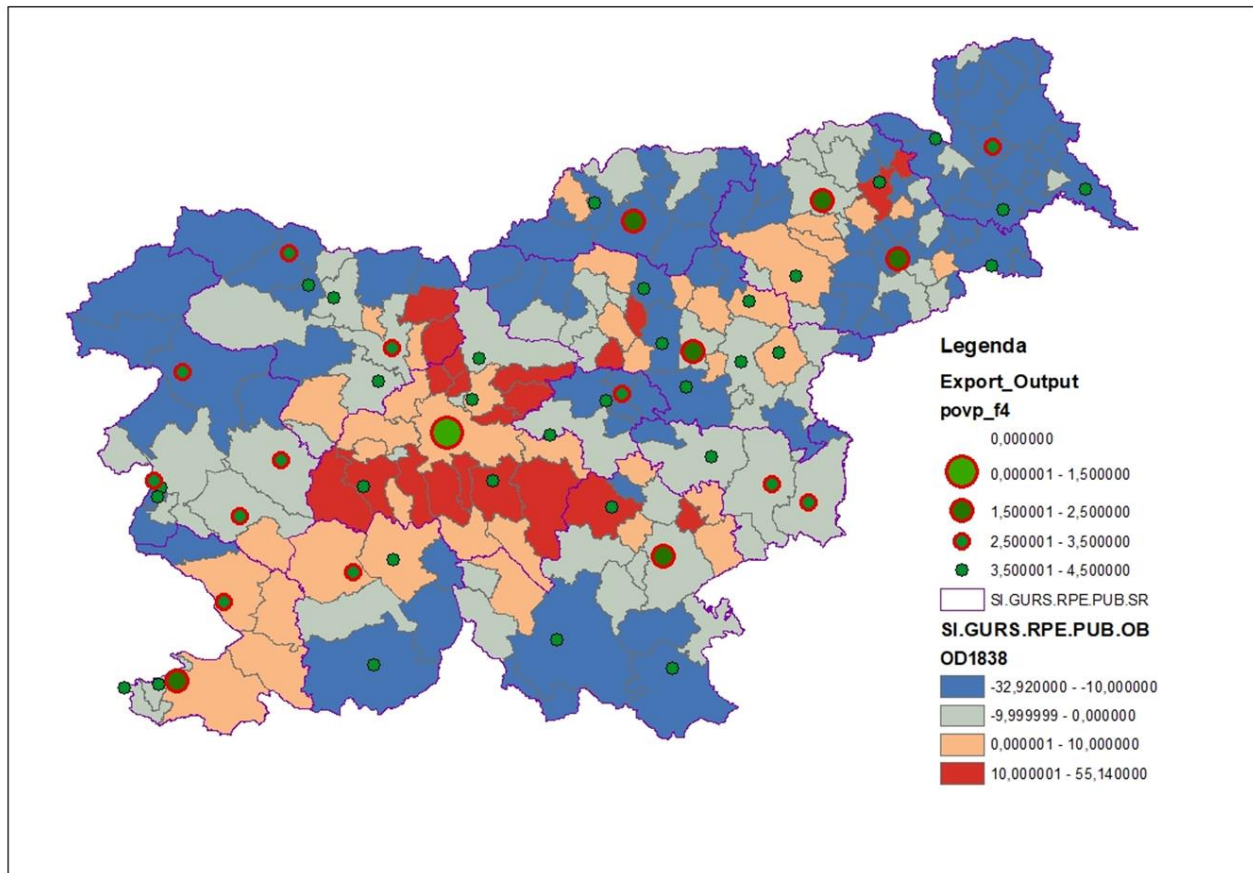
Sufficient public transportation

# Population growth

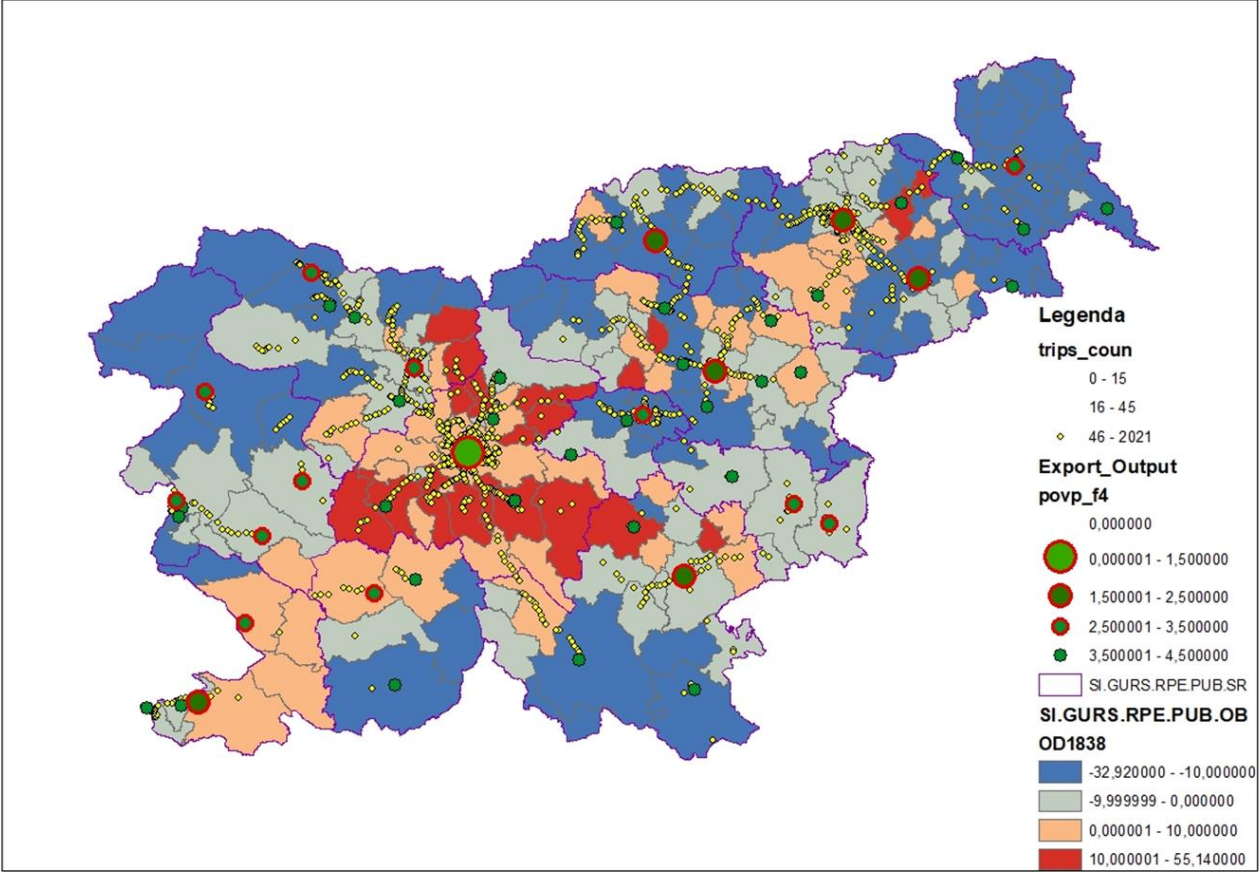




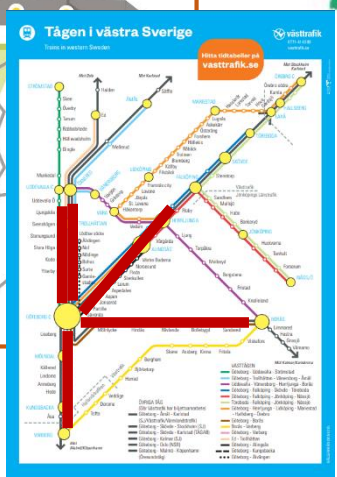
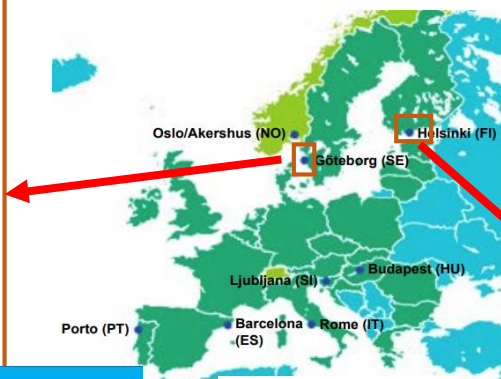
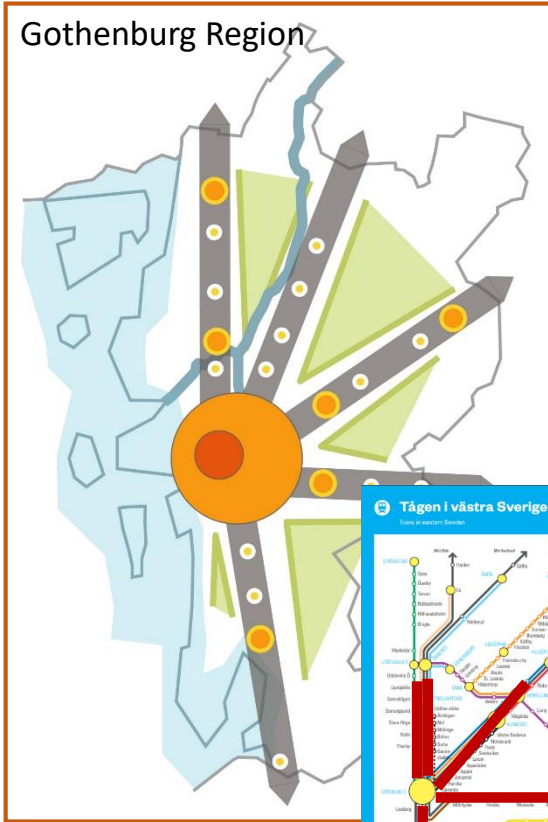
# Public and private services



# Accessibility by public transport

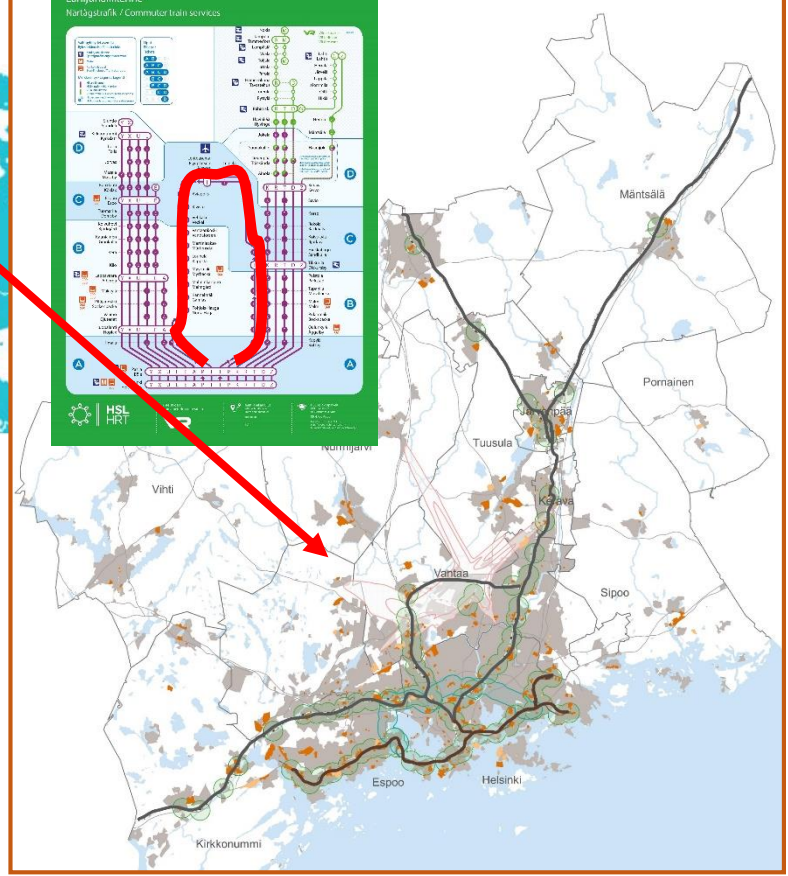


# Structural illustrations & Rail infrastructure



**SMART-MR**  
Interreg Europe  
European Union  
European Regional  
Development Fund

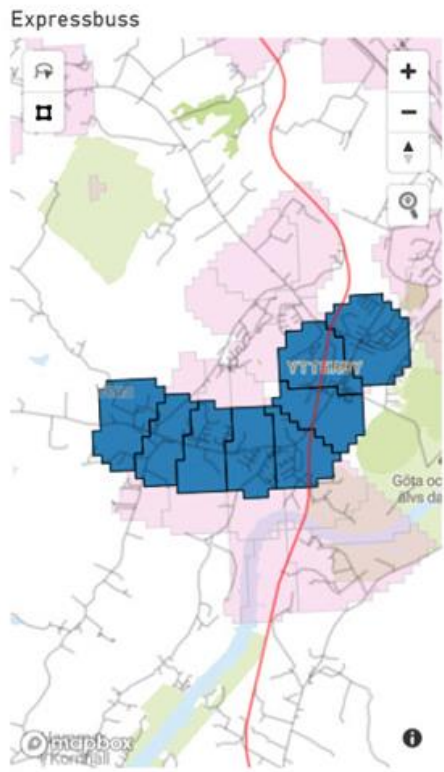
## Helsinki Region



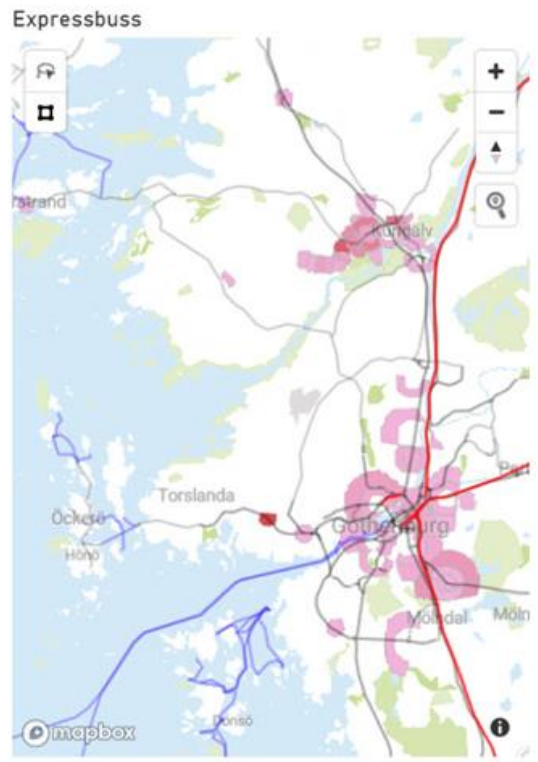


# Step 2: Regional benchmarking

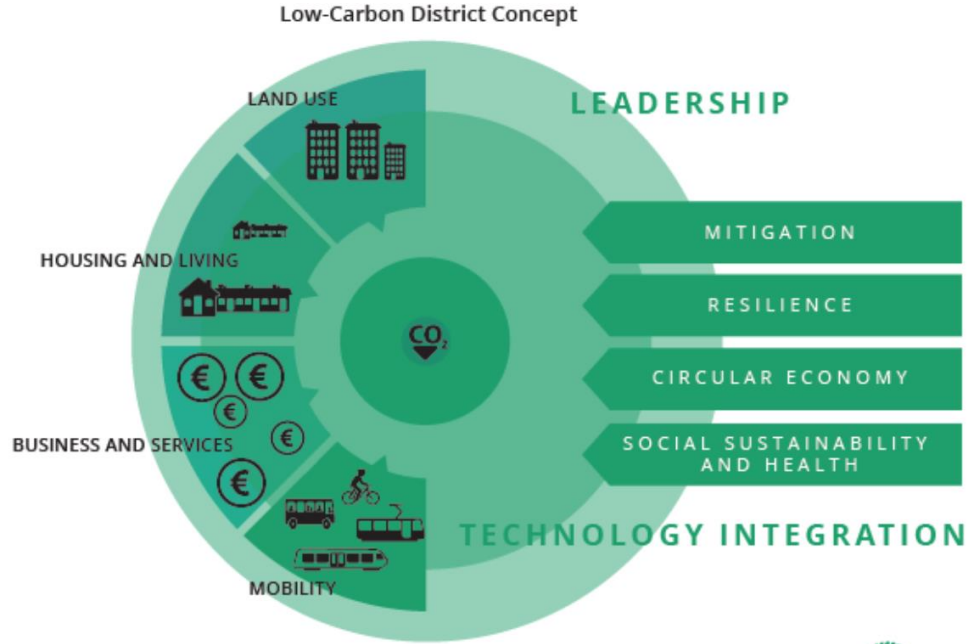
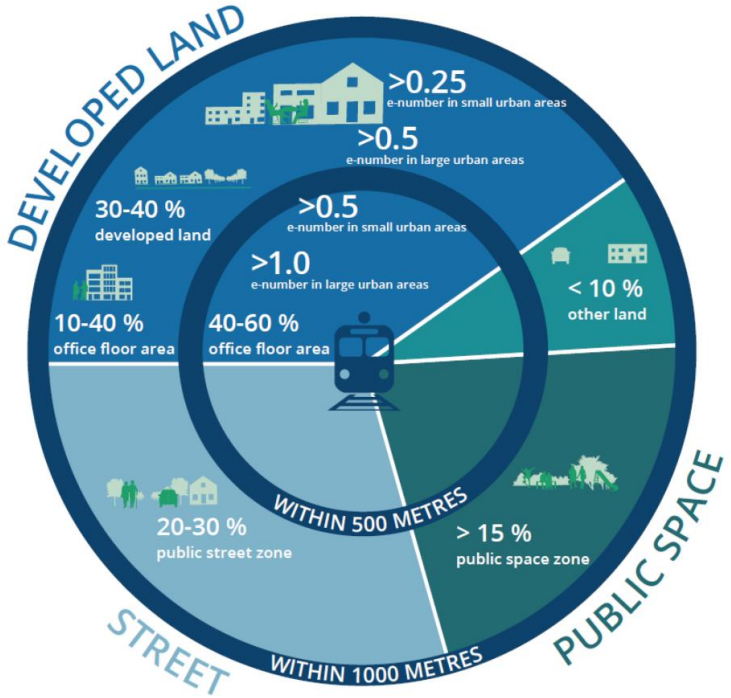
Attribut_från	500	Totalt
Ytterby vägskal_500	273	273
Ytterby station_500	469	469
Ytterby brandstation_500	11	11
Vena_500	7	7
Tegskiftegatan_500	108	108
Kyrkbäcksgatan_500	35	35
Kanehallsvägen_500	5	5
Dannemarksgatan_500	62	62
<b>Totalt</b>	<b>970</b>	<b>970</b>



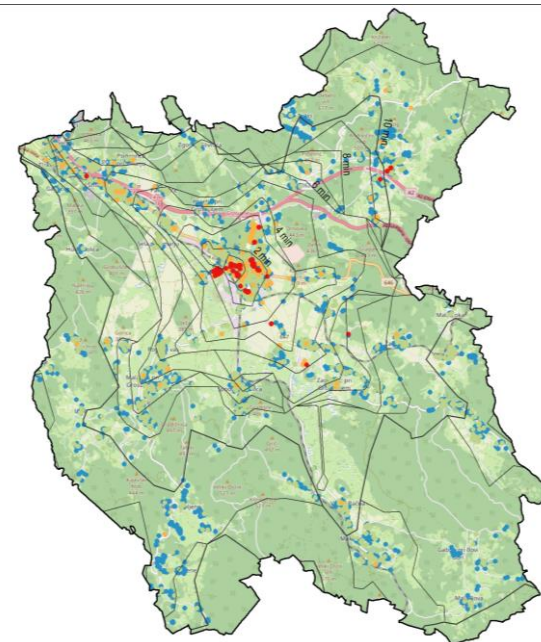
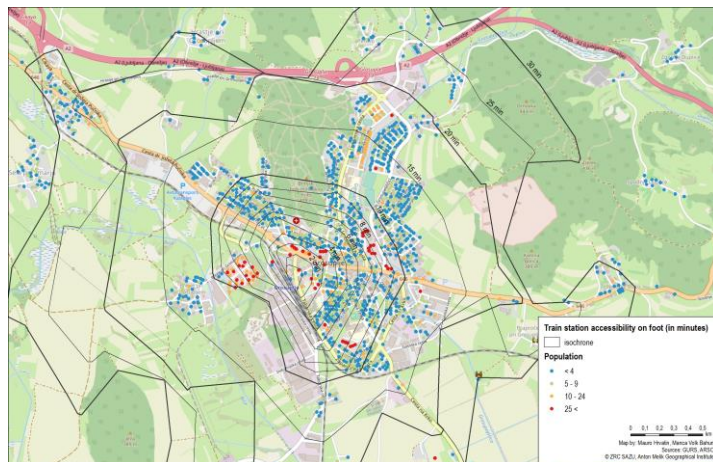
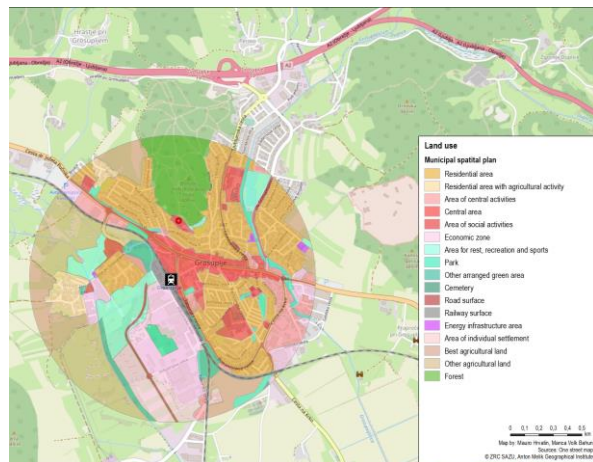
Attribut_till	Värde
Backadalsmotet_1000	10
Backadalsmotet_500	8
Bäckeblomsmotet_2000	6
Dannemarksgatan_500	15
Delsjömotet_1000	5
Delsjömotet_2000	29
Delsjömotet_500	5
Eriksdal_1000	5
Fars Hatt_500	6
Frölunda Torg_500	5
Heden Nya Allén_500	5
Hjalmar Brantingsplatsen_1000	13
Hjalmar Brantingsplatsen_2000	21
Johannefred_2000	6
Järnvågen_1000	13
Järnvågen_2000	7
Kanehallsvägen_500	5
Kevhaneriet_500	5
<b>Totalt</b>	<b>970</b>



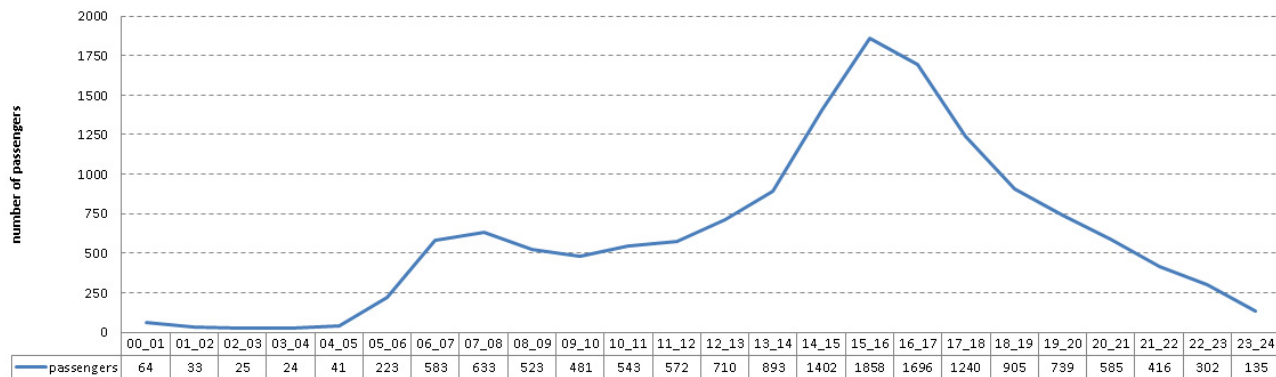
# Step 3: The station area level



# Step 3: Data-supported planning



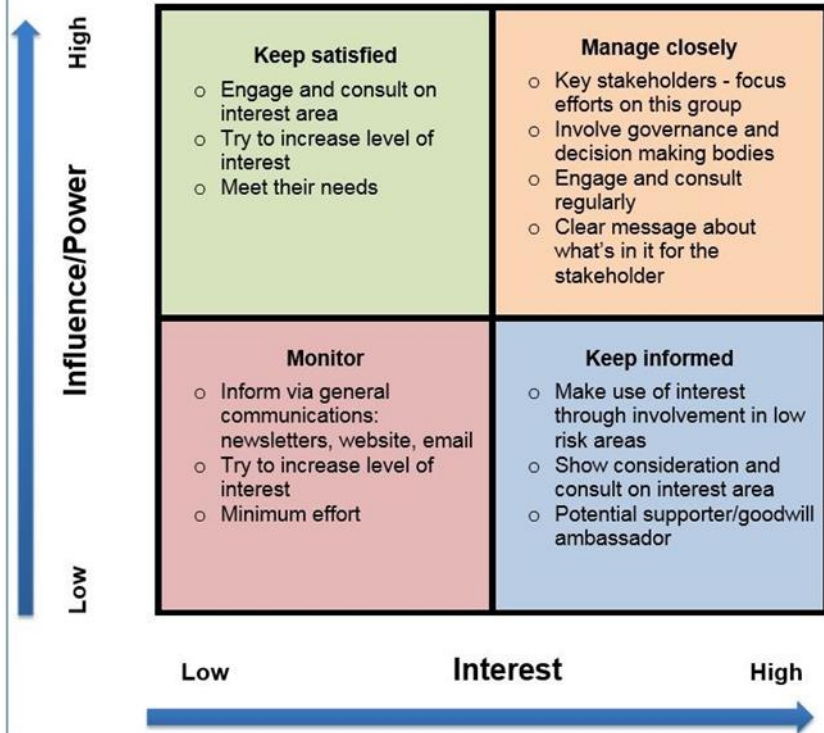
Departures of passengers from Ljubljana to Grosuplje



# Step 4: Participatory planning

- Gathering political support for the participatory process
- Identification of stakeholders and their perspectives

## III. Stakeholder Matrix Guide





# Step 4: Participatory planning

- **Building joint vision, short term and long term measures ...**

Layers of multiple possibilities



- Historical Malmi
- Compact Malmi
- Cosy and communal Malmi
- Verdant Malmi
- Active Malmi
- Healthy and learning Malmi
- Business hub Malmi
- Workplace Malmi
- Malmi for pedestrians
- Malmi for bikers
- Public transportation's Malmi
- Car driver's Malmi
- Climate smart Malmi
- Central Malmi

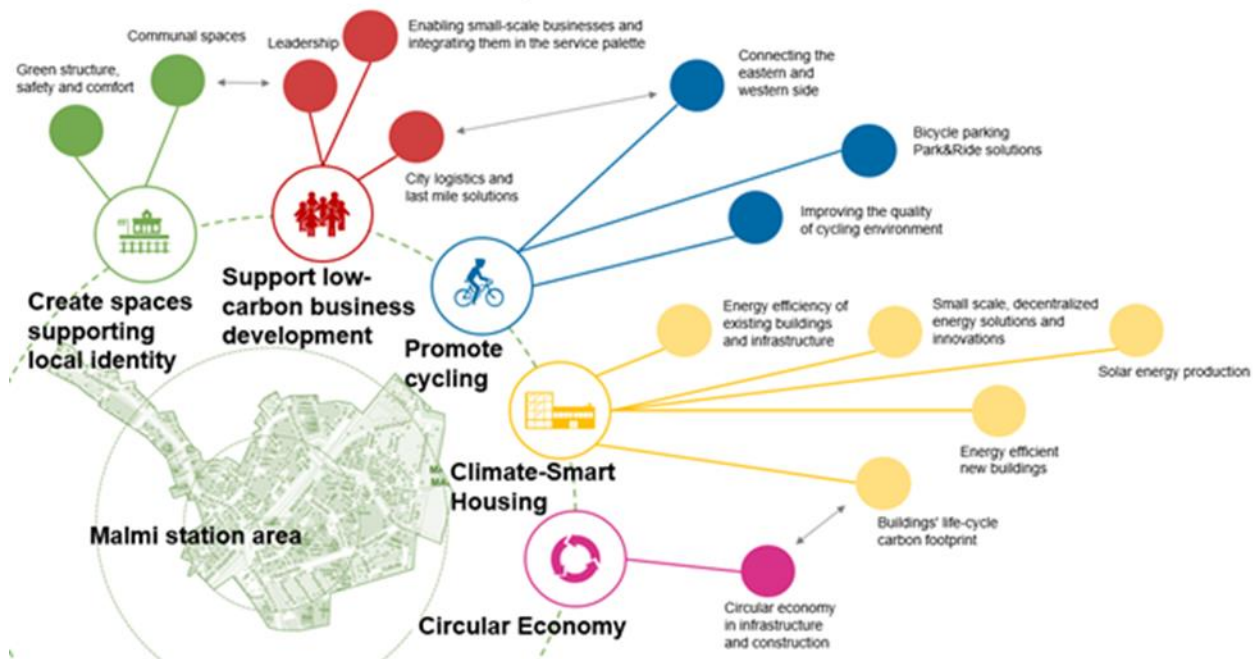
Source: Antti Mentula, City of Helsinki



# Step 5: Participatory planning vs. regional analysis

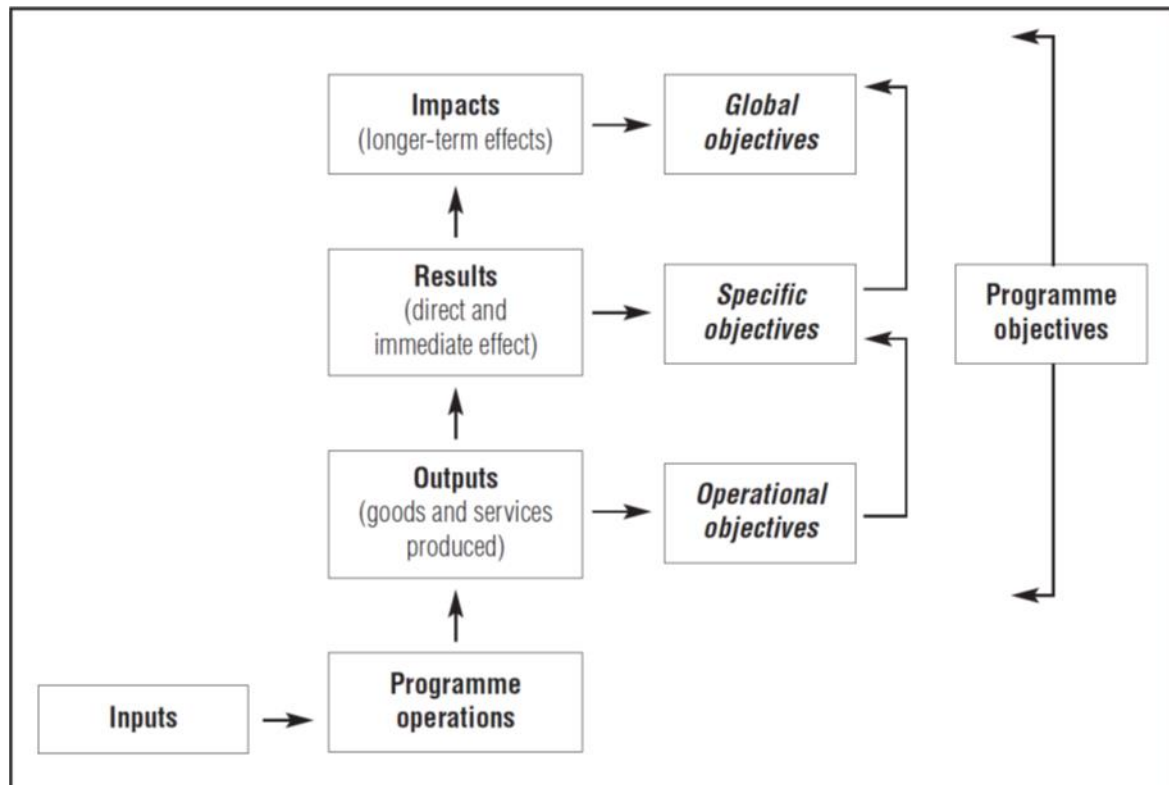
- Reevaluation of the results of the participatory process through regional analysis and data analysis perspective

## Pilot: Low-carbon roadmap for Malmi station area



# Step 6: Decision-making

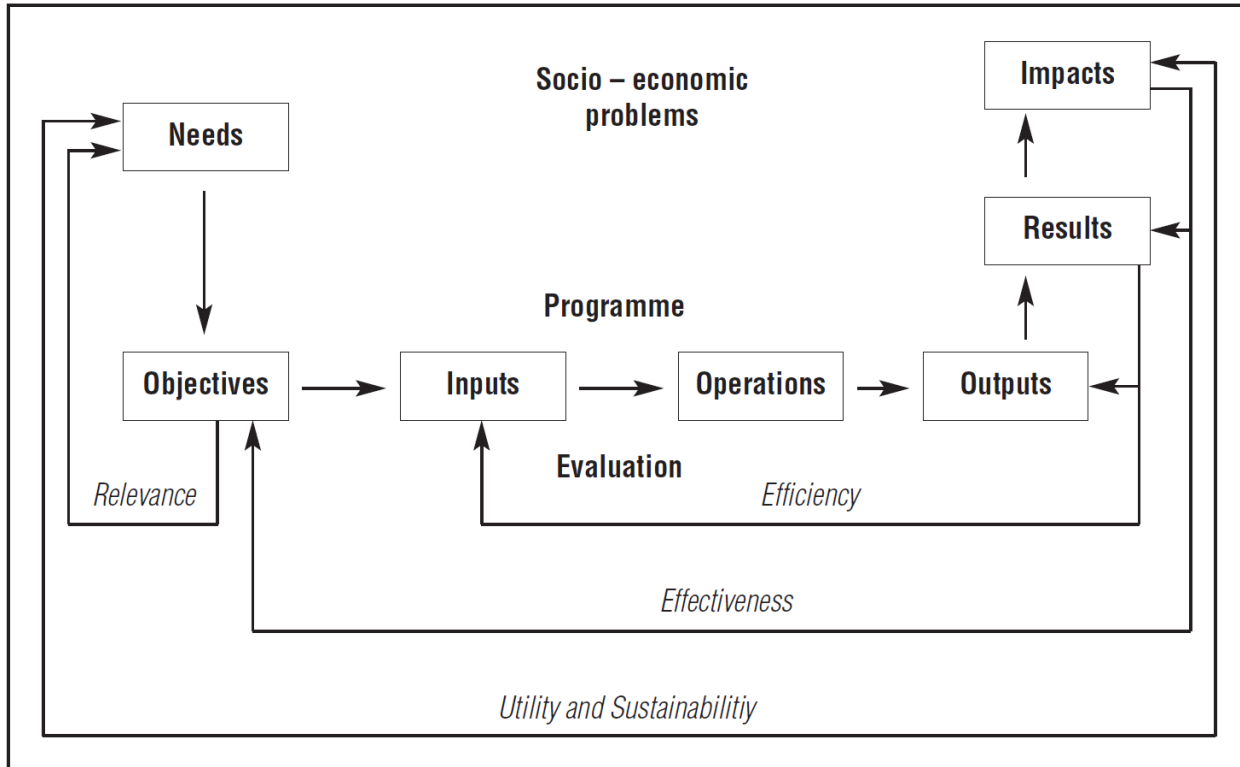
- Defining detailed measures, responsibilities, timetable and roadmap, beginning with simple and short term gains



# Step 7: Communicating the goals and measures



# Step 8: Monitoring and evaluation



Source: Selection and use of indicators for monitoring and evaluation, 1999, p. 28.

# Malmi centre

- A vision as joint direction
- Dreams based on facts
- Open & wide co-operation
- Early approach
- Message of support

# Ytterby

- Guidelines for land use in station communities
- Density
- Works for other stations along the railway.

Identity & communalit  
y

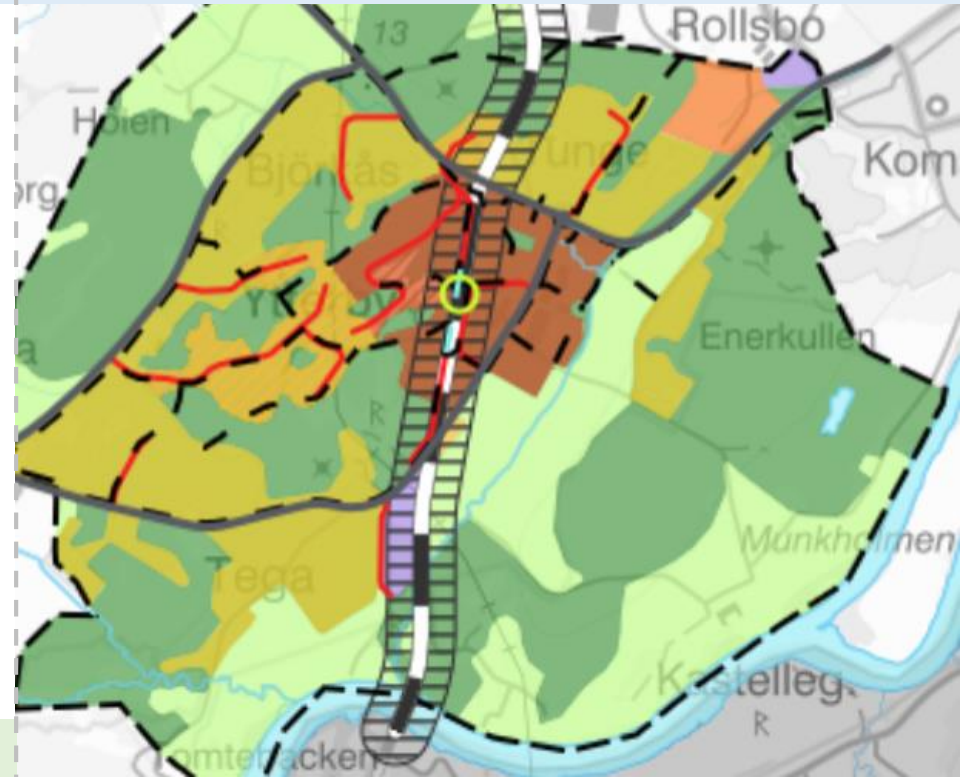
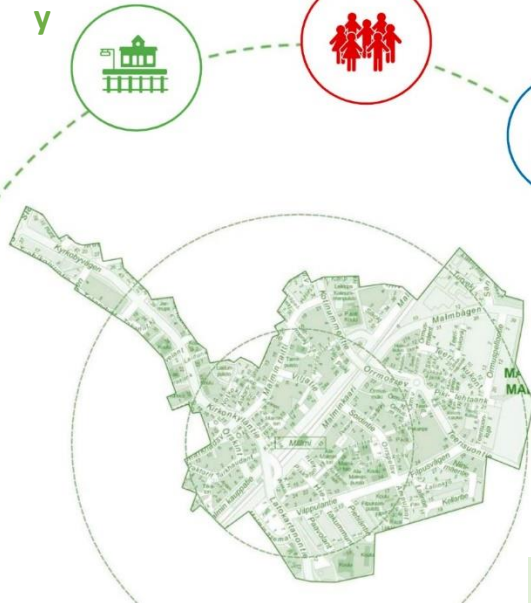
Centrifed  
services

Bicyclin

Climate-smart  
housing

Circular  
econom  
y

LOW CARBON ROADMAP







# SMART-MR

Interreg Europe



Thank you!

Questions welcome

Photo credits: Nuppu Hepo-Oja