

ABOUT

Budapest is the capital and the largest city of Hungary, the largest in Central Europe and the seventh largest in the European Union.

GEOGRAPHICAL DATA

The 525 km² area of Budapest lies in central Hungary surrounded by settlements of the agglomeration in Pest county. The capital extends 25 and 29 kilometers in the north-south, east-west direction respectively. The Danube enters the city from the north; later it encircles two islands, Óbuda Island and Margaret Island.[9] The third island Csepel Island is the largest of the Budapest Danube islands, however only its northernmost tip is within city limits. The river that separates the two parts of the city is only 230 m (755 ft) wide at its narrowest point in Budapest. Pest lies on the flat terrain of the Great Plain while Buda is rather hilly. Pest's terrain rises with a slight eastward gradient, so the easternmost parts of the city lie at the same altitude as Buda's smallest hills, notably Gellért Hill and Castle Hill. The Buda hills consist mainly of limestone and dolomite, the water created speleothems, the most famous ones being the Pálvölgyi cave and the Szemlőhegyi cave. The hills were formed in the Triassic Era. The highest point of the hills and of Budapest is János hill, at 527 metres (1,729 ft) above sea level. The lowest point is the line of the Danube which is 96 metres (315 ft) above sea level. The forests of Buda hills are environmentally protected.

CLIMATE

Climate data for Budapest

Month	Jan	Feb	Mar	Apr	May	Jun	Jul	Aug	Sep	Oct	Nov	Dec	Year
Record high °C (°F)	18.1 (64.6)	19.7 (67.5)	25.4 (77.7)	30.2 (86.4)	34.0 (93.2)	39.5 (103.1)	40.7 (105.3)	39.4 (102.9)	35.2 (95.4)	30.8 (87.4)	22.6 (72.7)	19.3 (66.7)	40.7 (105.3)
Average high °C (°F)	1.2 (34.2)	4.5 (40.1)	10.2 (50.4)	16.3 (61.3)	21.4 (70.5)	24.4 (75.9)	26.5 (79.7)	26.0 (78.8)	22.1 (71.8)	16.1 (61)	8.1 (46.6)	3.1 (37.6)	15.0 (59)
Daily mean °C (°F)	-1.6 (29.1)	1.1 (34)	5.6 (42.1)	11.1 (52)	15.9 (60.6)	19.0 (66.2)	20.8 (69.4)	20.2 (68.4)	16.4 (61.5)	11.0 (51.8)	4.8 (40.6)	0.4 (32.7)	10.4 (50.7)
Average low °C (°F)	-4.0 (24.8)	-1.7 (28.9)	1.7 (35.1)	6.3 (43.3)	10.8 (51.4)	13.9 (57)	15.4 (59.7)	14.9 (58.8)	11.5 (52.7)	6.7 (44.1)	2.1 (35.8)	-1.8 (28.8)	6.3 (43.3)
Record low °C (°F)	-25.6 (-14.1)	-23.4 (-10.1)	-15.1 (4.8)	-4.6 (23.7)	-1.6 (29.1)	3.0 (37.4)	5.9 (42.6)	5.0 (41)	-3.1 (26.4)	-9.5 (14.9)	-16.4 (2.5)	-20.8 (-5.4)	-25.6 (-14.1)
Precipitation mm (inches)	38.5 (1.516)	36.7 (1.445)	37.4 (1.472)	47.2 (1.858)	64.5 (2.539)	69.8 (2.748)	50.4 (1.984)	49.5 (1.949)	42.7 (1.681)	46.9 (1.846)	59.9 (2.358)	49.3 (1.941)	592.8 (23.339)
Avg. precipitation days	7	6	6	6	8	8	7	6	5	5	7	7	78
Mean monthly sunshine hours	55	84	137	182	230	248	274	255	197	156	67	48	1,933

The city has a humid continental, transitional climate - somewhere between the mild, snowy weather of Transdanubia, the variable continental climate of the flat and open Great Plain to the east and the almost sub-Mediterranean weather of the south. The climate of Budapest until some years ago was more rigid and cold during the winter and warm during the summer. During the spring the weather is agreeable at day and fresh at night. The summer temperatures are warm, this season is usually the most humid in which sudden heavy showers are the norm. Just as in the spring, the autumn is characterized by little rain and long sunny days (except of November that is one of the most rainy months). During the winter the snow is pretty rare and it lasts just for few days. The temperatures under 0° are the norm.

TRAVEL

AIRPORT

Budapest Ferenc Liszt International Airport (IATA: BUD, ICAO: LHBP), formerly known as Budapest Ferihegy International Airport, is the international airport serving the Hungarian capital city of Budapest, and the largest of the country's five international airports. The airport offers international connections primarily within Europe, but also to Africa and the Middle East.



Budapest Liszt Ferenc International Airport is located 16 kilometres (9.9 mi) east-southeast of the centre of Budapest, accessible by the Üllői road. The airport was renamed in honor of Ferenc Liszt, the virtuoso pianist and composer, on the occasion of the 200th anniversary of his birth.

Location:

<https://maps.google.com/maps?q=Liszt+Ferenc+International+Airport+%28Budapest+T2%29&oe=utf-8&aq=t&rls=org.mozilla:hu:official&client=firefox-a&channel=fflb&um=1&ie=UTF-8&hl=hu&sa=N&tab=wl>

GPS coordinates: 47° 25' 57.75'' North, 19° 15' 41.03'' East, height: 147 m

BY CAR

The Airport is well accessible by car from any point of Budapest. The Airport can be reached in 20-60 minutes from the City by the „High-Speed Road”. By that high-speed road, separated by string barrier from public traffic, the Airport can be accessed practically unhindered and any obstacle might be expected under extraordinary circumstances only. For those who arrive by car, we offer several parking facilities.

By car to the Hunguest Griff Hotel* Hotel:**

Address: H-1113 Budapest, Bartók Béla út 152.



GPS coordinates: 47.46899 19.02579

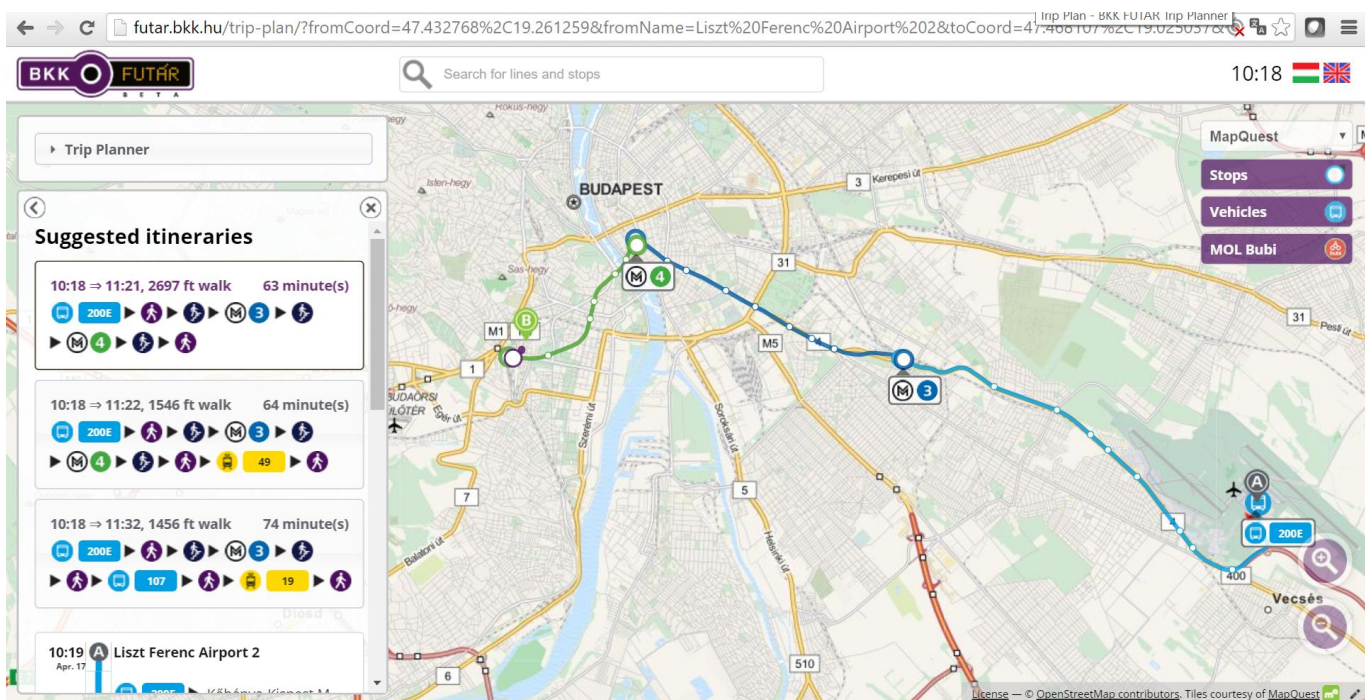
BY PUBLIC TRANSPORTATION

If you visit Hungary and arrive to Liszt Ferenc International Airport, public transport services of BKK offer you a good alternative to reach the city centre. Budapest Airport is relatively well accessible also by Public Transportation means. Passengers are taken by a direct bus service from (and between) Terminals 1 and 2, called the Bus 200E to Kőbánya-Kispest metro terminal.

You can download the official route planner of Budapest from any App Store, called: BKK Futár.

Routes:

<http://futar.bkk.hu/trip-plan/?fromCoord=47.432768%2C19.261259&fromName=Liszt%20Ferenc%20Airport%202&toCoord=47.468107%2C19.025037&toName=Bart%C3%B3k%20B%C3%A9la%20%C3%BAt%20152.&toSubName=1115%20Budapest&fromPlace=Liszt%20Ferenc%20Airport%202%3A%3A47.432768%2C19.261259&toPlace=Bart%C3%B3k%20B%C3%A9la%20%C3%BAt%20152.%3A%3A47.468107%2C19.025037&selectedItinerary=0&layers=SVB>



Option 1 in details



Option 2 in details



BY TRAIN

Not accessible from this terminal.

BY TAXI

The easiest and more convenient way to get to the city is to take a taxi. **Főtaxi** is the official taxi service provider at the Budapest Airport. You can find the taxi station at the arrival level. Reservations can be made in person at **Főtaxi** booths located at the exit at Terminal 2A and Terminal 2B terminals. At the taxi rank in front of the stands taxis are parking continuously waiting for passengers, in case of a special request there is only a few minutes to wait for the taxi arriving from the nearby parking.

Rates by taxi are approx. 25 euro per cab, not per person. Please do not forget to ask for a receipt.

http://www.bud.hu/english/passengers/access_and_parking/by_taxi

Please avoid taxi cowboys, and for fair rates please opt for FŐTAXI.

ACCOMODATION

HOTELS

HUNGUEST GRIFF HOTEL

H-1113 Budapest, Bartók Béla út 152
BUDAPEST
HUNGARY

Tel: +36-1-204-0044; Fax: +36-1-204-0062

Email: hotelgriff@hunguesthotels.com

Special rate: approx. 30 euro / night



The Hunguest Hotel Griff is situated in the capital, Buda side in a pleasant environment far from street noise. You can find us 1km from M7 and M1 motorways and just a few minutes from the Kelenföldi railway. You can reach the city centre and the Buda Castle only in 15 minutes with tram (19 tram, 49 tram) which stop can be found 50 meters from the hotel. Those guests who are coming with car or autobus can use our private car park.

Guestrooms:

Our Guest can rest in a pleasant and calm environment. We have 108 rooms. You can choose between Classic and Premium Category room. All rooms are furnished with minibar, TV (cable TV), telephone and air condition.



Restaurant and Event opportunities

Phoenix Restaurant - Our Guest can get to know the famous hungarian gastronomy and eat continental food or choose from generous and healthy breakfast buffet.

Cafe' Colibri - We can offer coffee specialities, cooling cocktails, fresh sandwiches, cakes and soft-drinks at every day for our guests.



Wellness and Fitness opportunities

Our hotel also can satisfy sport lovers. We have European normalized Squash courts, a covered football court and a Fitness Club with the most modern cardio machines.

We are looking forward to welcoming you in our hotel!



Other Services

Gift Shop, Safe, Closed Parking, Wakening, Laundry and Iron services (for allowance), Free Internet usage in the Hall (WIFI), Credit Card (Visa, EC/MC, Cirrus, Maestro), car rent, taxi services, program organization.

You can order on the reception the following: Shoeshine services, toothbrush, toothpaste, razor, cosmetic tissue, bathrobe, work-box, envelope, note-paper, blotter, iron, hair-dryer, umbrella, blanket, pillow.

TENTATIVE AGENDA

Please see attached document.