



# REMIX

## Interreg Europe



European Union  
European Regional  
Development Fund

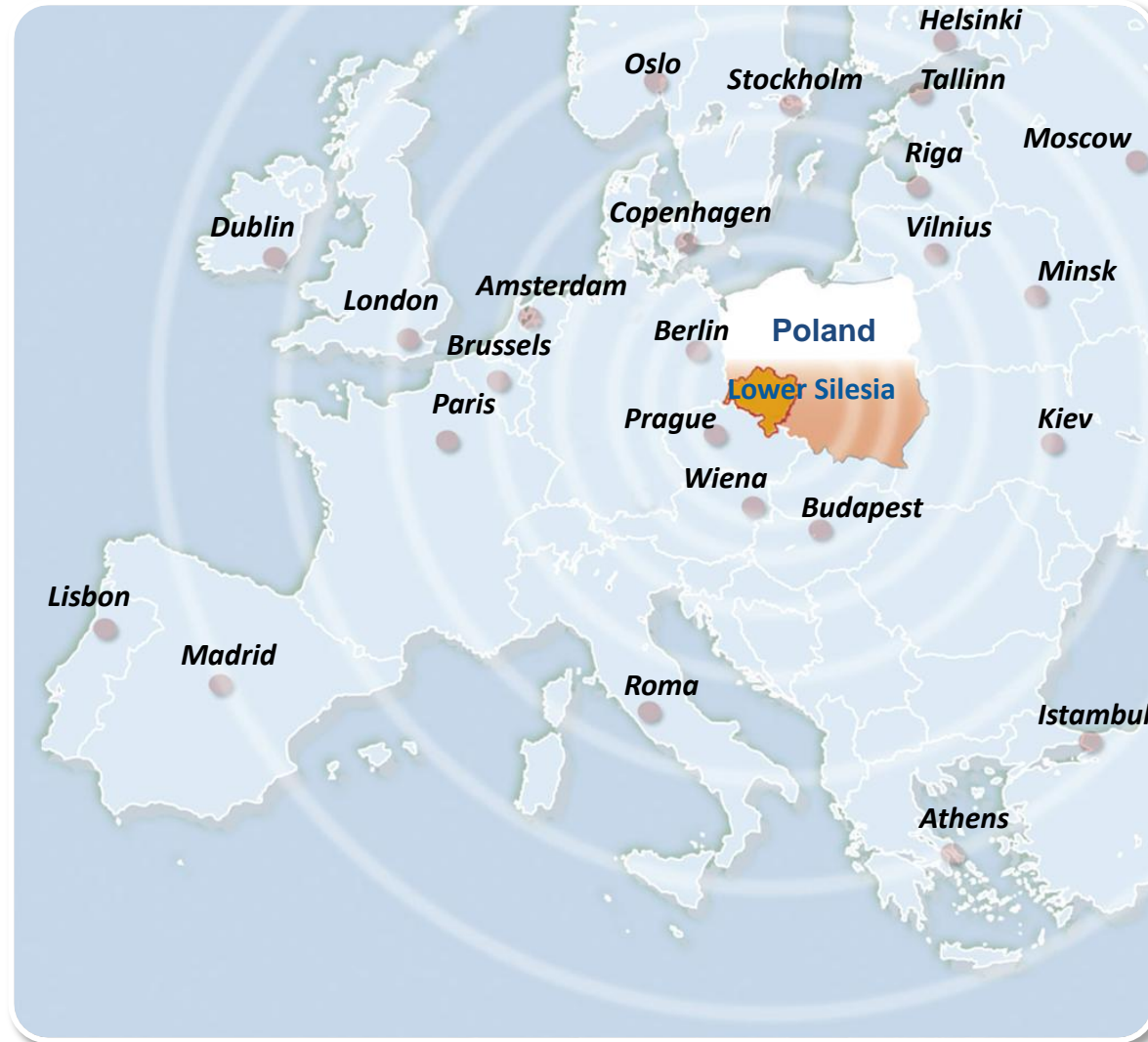


# LOWER SILESIA

If you want  
more...

*Katarzyna Banaszekiewicz*  
*Director of the Economic and Investment Promotion Unit*

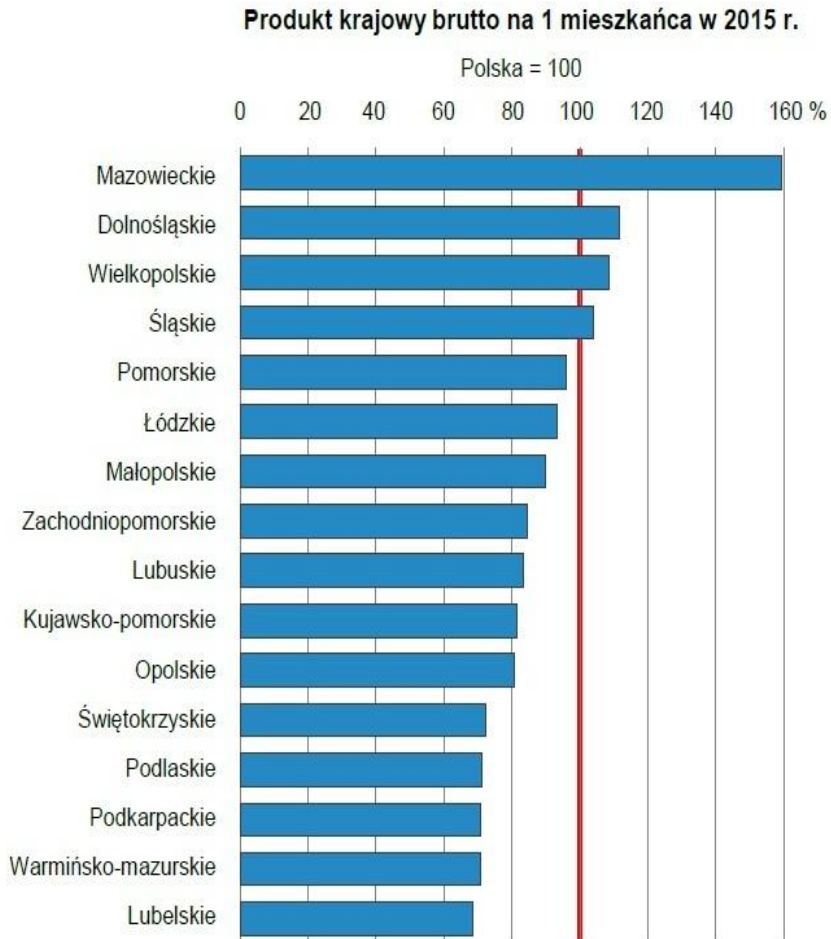
# Lower Silesia in Europe



# Basic Informations

	<b>Poland</b>	<b>Lower Silesia</b>	
Territory	<b>312,7 k km<sup>2</sup></b>	<b>19,9 k km<sup>2</sup></b>	6,4%
Population	<b>38 ,44 m</b>	<b>2,9 m</b>	7,5 %
Capital	Warsaw	Wroclaw	
Capital's population	<b>1 744 k</b>	<b>635 k</b>	
Adminstration	16 voivodeships	30 counties/districts and 169 communes	

Source: GUS



**GDP 2015 : 36,06 bn EUR  
(8,4% GDP of Poland)**

**LS: GDP per capita 111,6%  
2-nd place in Poland**

**Unemployment (October 2017): 5,8 %**

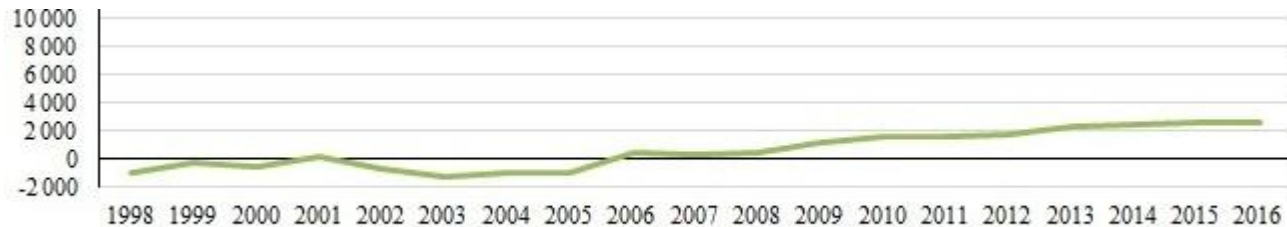
**Number of companies: 366,7 k**

**Level of industrialization: 34,7% GDP  
3-rd place in Poland**

Source: GUS

# Internal migration

## Lower Silesia



**Lower Silesia is one out of five leading regions in Poland that have plus migration balans.**

*Source: GUS, 2016 r.*

## 35 universities in Lower Silesia

### Number of universities' graduates:

#### Poland

**Total: 395 192**

**The sciences:**

**66 841 (16,9 % of Poland)**

#### Lower Silesia

**Total: 34 240 (8,7 % of Poland)**

**The sciences:**

**6 723 (19,6 % of Lower Silesia)**



Politechnika Wroclawska



Uniwersytet Ekonomiczny  
we Wroclawiu



UNIWERSYTET  
PRZYRODNICZY  
WE WROCLAWIU



UNIWERSYTET MEDYCZNY  
IM. PIASTÓW ŚLĄSKICH WE WROCLAWIU

# Perfect business location

- Well developed transport network; Region incorporated into the European Transport Corridor
- International airport
- International railway connections
- Common border with Germany and Czech Republic
- Infrastructure prepared for investments – 4 SEZ out of 14



# Special economic zones



Specjalna Strefa Ekonomiczna  
Małej Przedsiębiorczości S.A.



euro-park  
**wistosan**

Tarnobrzaska Specjalna  
Strefa Ekonomiczna  
Agencja Rozwoju Przemysłu S.A.



**Employees in industry: 24,51 % (Poland 20,64 %)**

**Level of industrialization: 34,7 % GDP**

**Sold production per capita: 8 640 EUR (Poland 7 057 EUR)**

**Innovation's investment level in industry: 10.13 % of total investment in Poland**



# Companies by number of employees

Employment	Poland	Lower Silesia	%
<b>total</b>	<b>4,294 m</b>	<b>366, 7 k</b>	<b>8,5</b>
<b>Micro (0-9)</b>	<b>4,112 m</b>	<b>354, 0 k</b>	<b>8,6</b>
<b>Small (10-49)</b>	<b>147,6 k</b>	<b>10 234</b>	<b>6,9</b>
<b>Average (50-249)</b>	<b>29 171 k</b>	<b>2 114</b>	<b>7,2</b>
<b>Big (250-999)</b>	<b>3 684</b>	<b>297</b>	<b>8,1</b>
<b>1000 and more</b>	<b>747</b>	<b>66</b>	<b>8,8</b>

## • Automotive



**DSSE** Daicel Safety Systems Europe Sp. z o.o.

**Mando**  
Corporation Poland Sp. z o. o.



Mercedes-Benz

**AKS**

**NI**fCO



**CooperStandard**

**TOYOTA**

**faurecia**



**Autoliv**

**RONAL**



Source: PAiZ

- Household appliances



**ILPEA**

 **SOLGAZ**

**B/S/H/**

 **Electrolux**



  
**Whirlpool**



Source: PAiZ

## • Electronics

**TOYOTA**



 **LG Display**

**VESTEL**

**elektros**



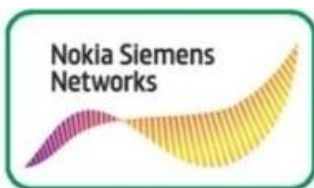
 **INVENTRONICS**  
invention & experience

 **nord electronics solutions**



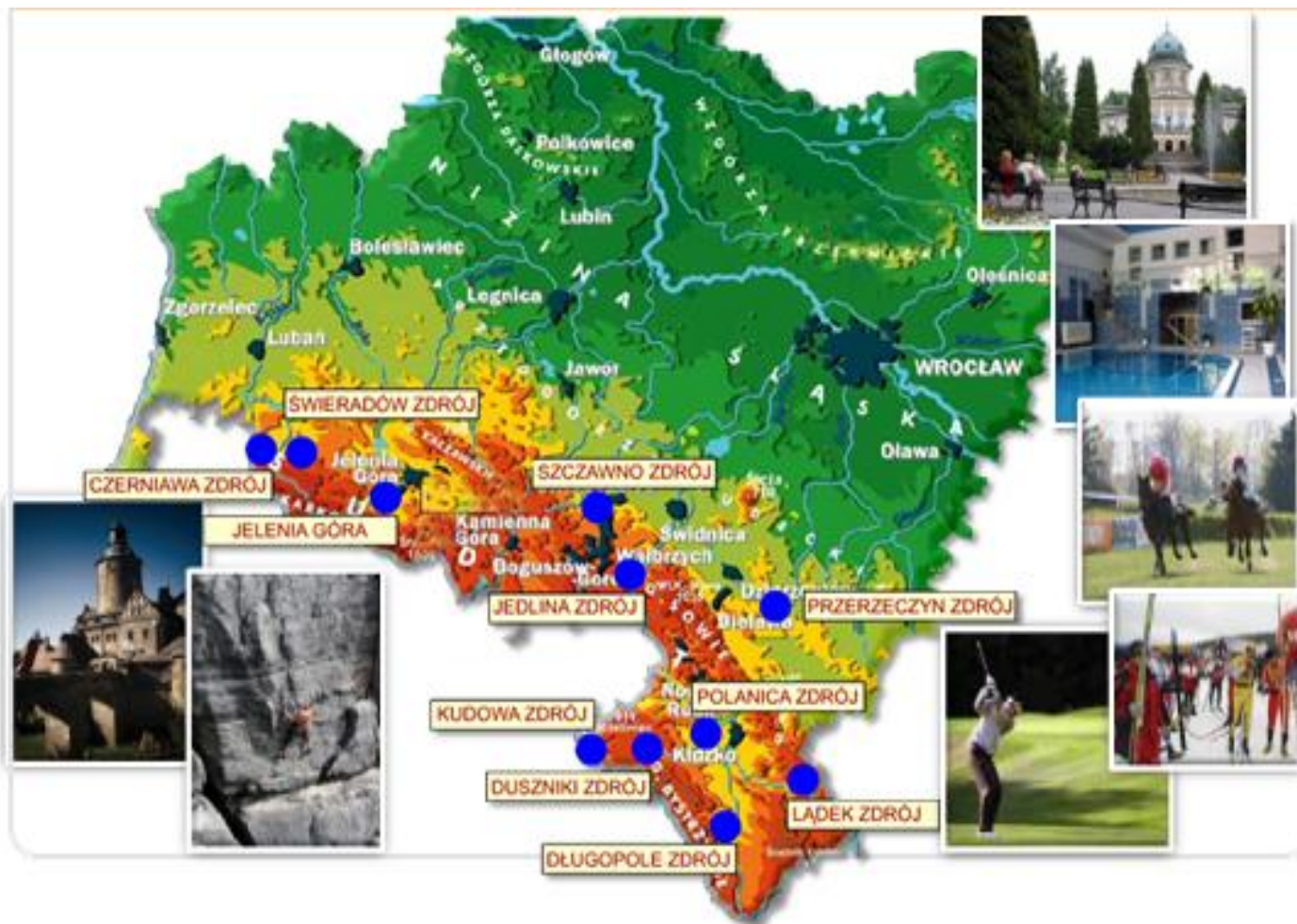
Source: PAiZ

## • R&D



Source: PAiZ

# Tourist region



**Chemical and pharmaceutical  
industry**

**Spatial mobility**

**High – quality food**

**Natural resources  
and recyclable materials**

**Manufacture of machinery  
and equipment,  
metal processing**

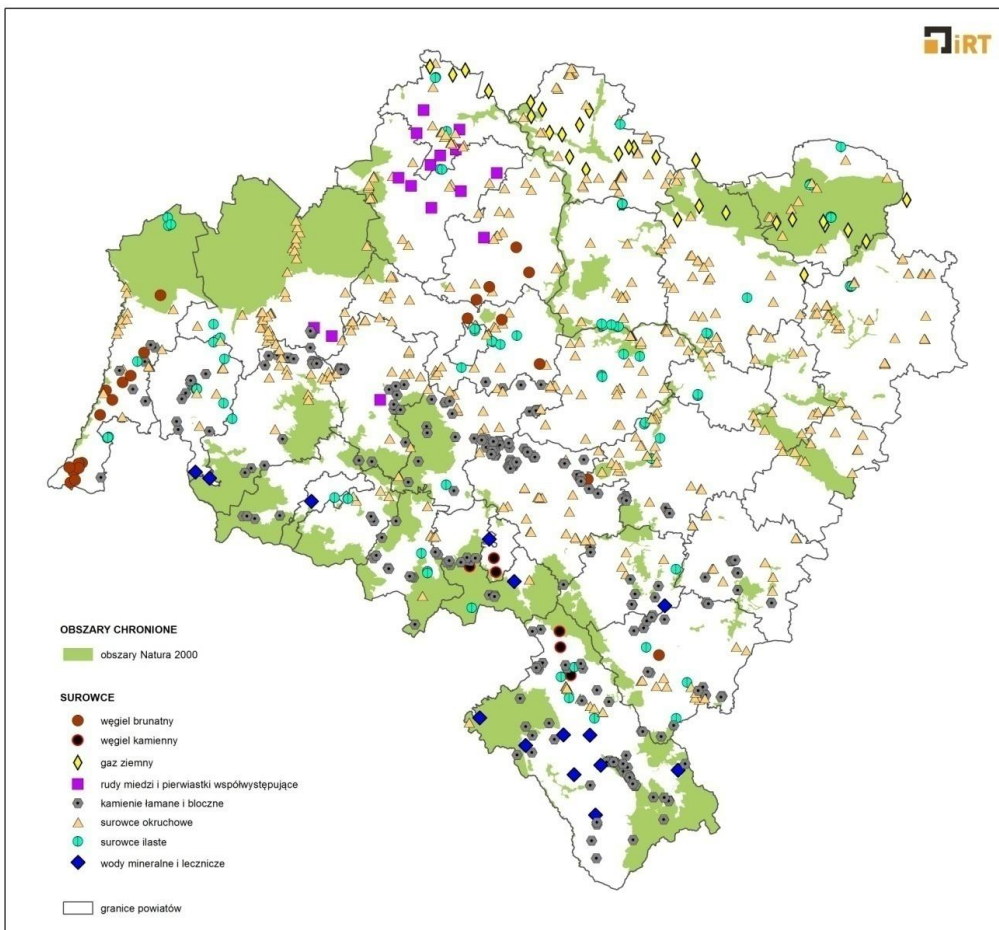
**Information and communication  
technologies**



## Diversity of mineral's deposits:

- copper and silver deposits □
- gas □
- lignite □
- high quality rock (construction) mineral deposits □
- mineral and therapeutic water deposits □





- **NATURA 2000 comprises 21% of Lower Silesia area**
- **Environmentally damaging investments within NATURA 2000 areas are forbidden, except for overriding public interest (e.g. health, public security)**

- 1. The sector dominated by large companies.**
- 2. Leader in stone mining and processing.**
- 3. Inactive coalfield situated in the south of the region (Wałbrzych, Nowa Ruda)**
- 4. Identified weaknesses and challenges include:**
  - lack of clear raw material strategy;
  - low processing of resources;
  - domination of mining companies;
  - low innovation factor and R&D expenditures from SMEs;
  - depletion of mining resources;
  - high investment and social costs of new mines;
  - low social acceptance for new initiatives on mining activity.
- 5. Advantages and opportunities:**
  - new coal mining investments foreseen;
  - rare earth elements demanded on a much larger scale;
  - using inactive mining sites as centres of history and knowledge;
  - looking for new ways of cooperation – clusters.

## ***MINELIFE - living with mining***

Duration – 3 years

Budget – 696 160 EUR (Lower Silesia – 110 236 EUR)

Partners:

**State Mining Authority of Saxony in Freiberg - SOBA (DE) – LP**

**State Mining Authority in Katowice - Regional Mining Authority in Wrocław (PL)**

**Lower Silesian Voivodeship – Marshal Office of Lower Silesia (PL)**

Main objective:

**Intensification of institutional cooperation and partnership between citizens and mining institutions in the Saxony and Lower Silesia border area.**

Main results:

- 1. Development of competences of mining institutions.**
- 2. Development of effective conflict management strategy.**
- 3. Social improvement of mining image.**



## ***Stone rout***

Duration – 30 months

Budget – 2 185 604 EUR (Lower Silesia – 1 016 868 EUR)

Partners:

**Město Hořice (CZ) - LP**

**Communes: Dobromierz, Miasto Świdnia, Strzegom (PL)**

**Podzvičinsko, z. s. (CZ)**

Main objective:

**Reconstruction of stone traditions as a way of enhancing tourist cross-border offer.**

Main results:

- 1. Make more attractive tourist proposal**
- 2. Increase tourist flow on the local cross-border level**

**FP7** (Seventh Framework Programme)

**KGHM Cuprum Ltd Research and Development Centre** – 5 mining projects

**HORIZON 2020**

**Department of Geoengineering, Mining and Geology of Wrocław University of Science and Technology:**

**DISIRE** (Integrated Process Control based on Distributed In-Situ Sensors into Raw Material and Energy Feedstock)

**KGHM Cuprum Ltd Research and Development Centre:**

**BIOMORE** (New Mining Concept for Extracting Metals from Deep Ore Deposits using Biotechnology)

**DISIRE** (Integrated Process Control based on Distributed In-Situ Sensors into Raw Material and Energy Feedstock)

**SIMS** (Sustainable Intelligent Mining Systems)

**Institute for Territorial Development:**

**MIREU** (Mining and Metallurgy Regions of EU)

**Lower Silesian Branch of the Polish Geological Institute:**

**ProSUM** (Prospecting Secondary raw materials from the Urban Mine and Mining waste)

# What we want to achieve?

- 1. Improve governance towards stronger and more sustainable mining and raw materials sector with a particular focus on the innovation and knowledge of SME industries.**
- 2. Involve assistance of major regional players of mining industry in dialog on its future development.**
- 3. Evaluate, update and propose new solutions concerning RIS3**
- 4. Impact the Structural Funds - through improvement of RIS3 as an important instrument in the formulation of the Regional Operational Programme.**
- 5. Have more effective ROP impact on regional development in terms of quality and efficiency.**

# Stakeholders group







# REMIX

## Interreg Europe



European Union  
European Regional  
Development Fund

***Thank you  
for your kind attention***

***Katarzyna Banaszekiewicz  
Director  
Economic and Investment Promotion Unit***



*Project smedia*