



Smart Specialisation Platform for Industrial Modernisation, Mining Industry and global value chains partnership

Kick off meeting in Joensuu Science Park,
13th March 2019

Kainuu Region

Katja Sukuvaara
Regional Development Manager



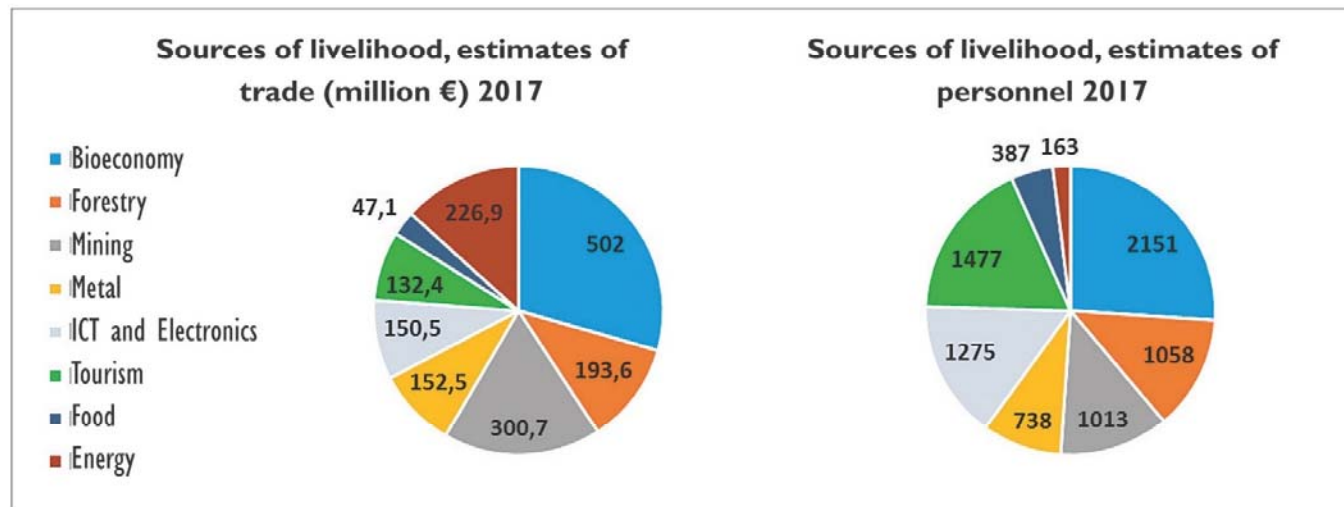


Characteristics of Kainuu

- Area 22688 km², size of Belgium
- Total 8 municipalities
- Population 73 959 inhabitants
- Population density: 3,4 inhabitants per km²
- Number of incoming tourists 250 000 per year (40% Russia, 11 % China, 11% France)
- Number of enterprises: 4109
- GDP: 27160 € per inhabitant (2016)

Main industries

- Bio economy, Mining, Tourism, Technology industry
- Forests cover 72% of the total surface and bioeconomy in its various forms is the biggest of Kainuu's key industries both in terms of turnover and human resources.

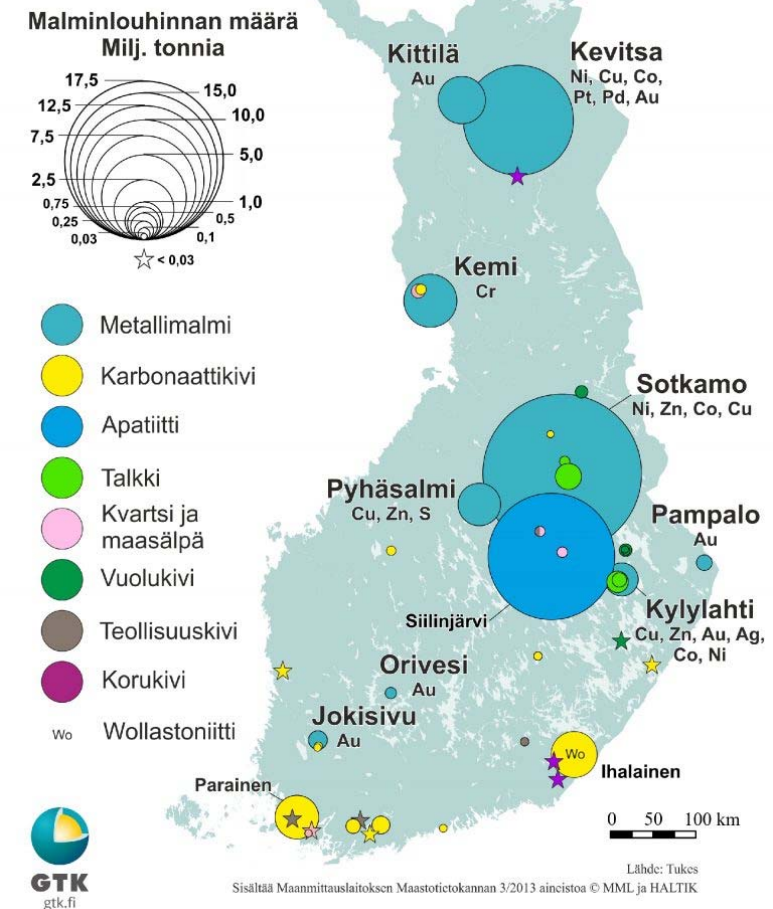


Estimated turnovers and human resources of Kainuu's business sectors in 2017 (Picture 4).

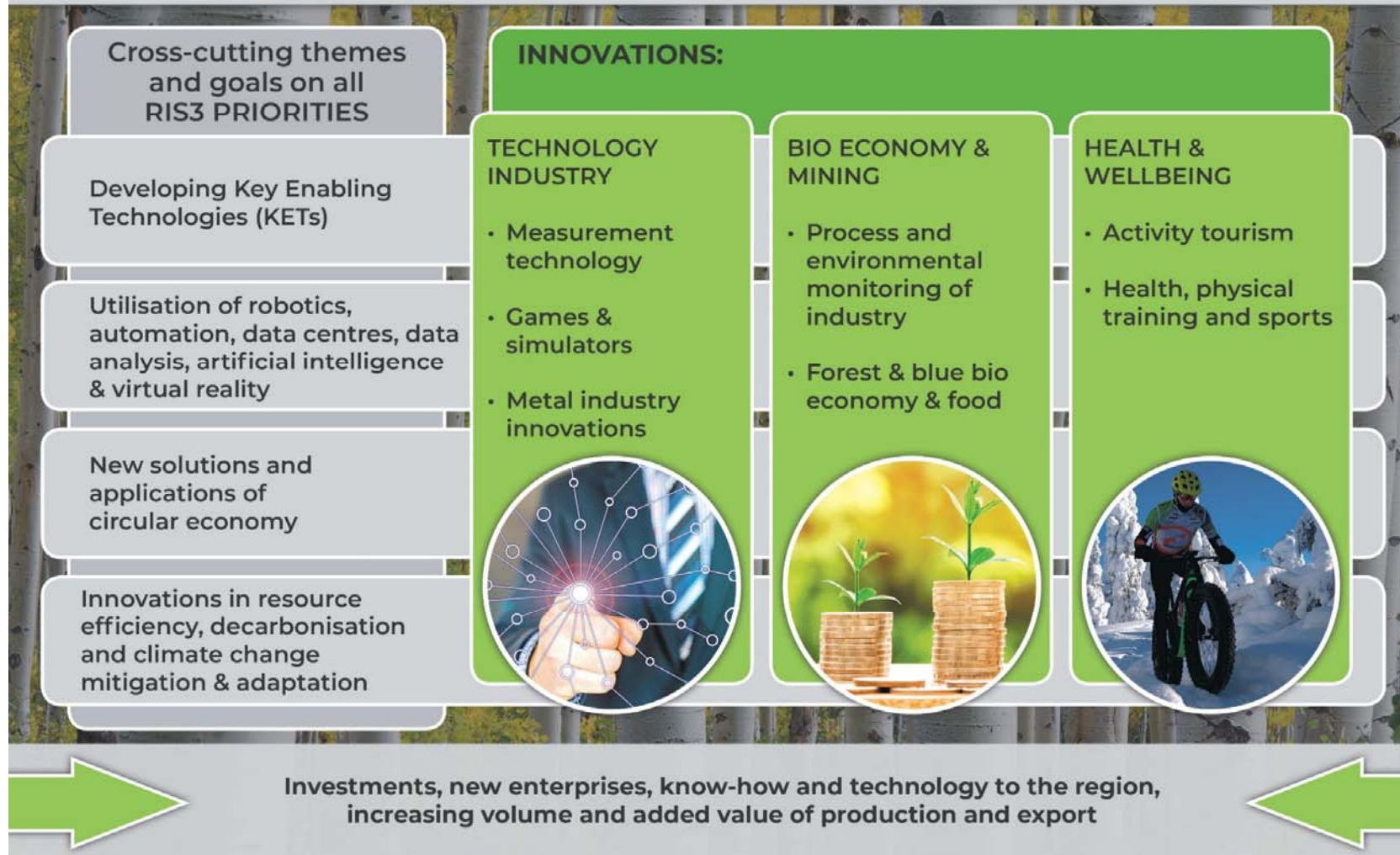
Operating and planned mines in Kainuu

- Terrafame Mining Ltd.: mines and processes nickel, zinc, cobalt and copper
- Mondo Minerals Ltd.: talc producer
- Sotkamo Silver Mine project (45M€), production starting in March 2019: silver, gold and zinc
- Juuan dolomiittikalkki: dolomite (operating in Juuka and in Paltamo)
- Otanmäki Mine: goal is to reopen the mine during 2020-2022
- Kalevala Gold (in Suomussalmi)
- Terrafame battery chemicals plant (175M€) to be built in 2019, in production in the beginning of 2021

MALMINLOUHINNAN MÄÄRÄ
SUOMEN KAIVOKSISSA 2017



SMART SPECIALISATION (RIS3) CHOICES OF KAINUU REGION 2018-2021



Kainuu region's FDI attractiveness

Strengths	Challenges
Abundant & sustainable natural resources ++	Low critical mass (population and economic base) --
Focus & growth in high-tech manufacturing ++	Infrastructure quality - -
Real labour productivity (automation) +	Demographic ageing -
Regional innovation (helix-generated) ecosystem +	Relatively low educational level -
Access to national innovation ecosystem +++	Low start up intensity & retainment -
Adaptability to new technologies +	Precedence of FDI and low landing rate -
Gateway location (cross border corridor): value chain potential +++	
Access to domestic and non domestic growth markets ++	
New growth sectors (bio-based industries including side flow valorisation, gaming, mining) ++	
Strong regional export growth (basic industry effects) ++	

Attractiveness grading

- ++ Key attractiveness
- + Moderate attractiveness
- Moderate weakness
- Key weakness

Kainuu Mining Strategy 2019-2025

Objective of the Mining Strategy of Kainuu is to implement the objectives of the mining sector, written in the Kainuu regional program 2018-2021:

- **A sustainably growing extractive cluster is being created in Kainuu, linking research, development and innovation** as well as coordinated cooperation and development activities in the field of business.
- In line with the principles of the circular economy, **new products are being developed by the extractive industries.** Industry's **high technology, skills and services and products in the sector are increasing.**
- **Ensure the availability of skilled labour force.**

Kainuu Mining Strategy 2019-2025

Kainuu Mining strategy 2019-2025: a tool for development of the sector.

The Mining Strategy covers the current status, vision, values and development objectives of mining, extractive activities/natural quarries and exploitation of mineral resources.

The Mining Strategy strengthens co-operation between private and public sector actors relevant to the development of the extractive sector in Kainuu region.



Building blocks of the strategy



Thank you for you attention!

Katja Sukuvaara
Regional Development Manager
Regional Council of Kainuu
+358 44 4100 732
katja.sukuvaara@kainuu.fi

More information about the Kainuu Mining Strategy process:

Kari Ylönen
Project manager
+ 358 400 500 216
kari.ylonen@kainuunetu.fi

Ritvaleena Leinonen
Coordinator
+ 358 44 551 3830
ritvaleena.leinonen@kainuunetu.fi

