

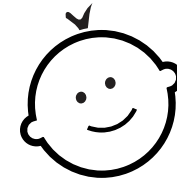
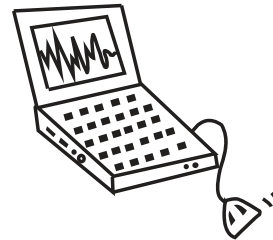
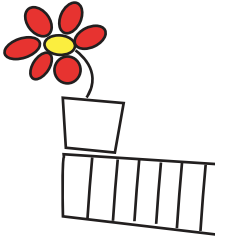


Spazio CO-STANZA

coworking, bambini e attività culturali

WHAT IS CO-STANZA?

Roots and routes for people in transition



**An intimate
atmosphere, that
feels like your
second home**

An office

**An infant and
baby care area**



HOW DID EVERYTHING START?



Working is less hard if it's shared by many

Omero



Target

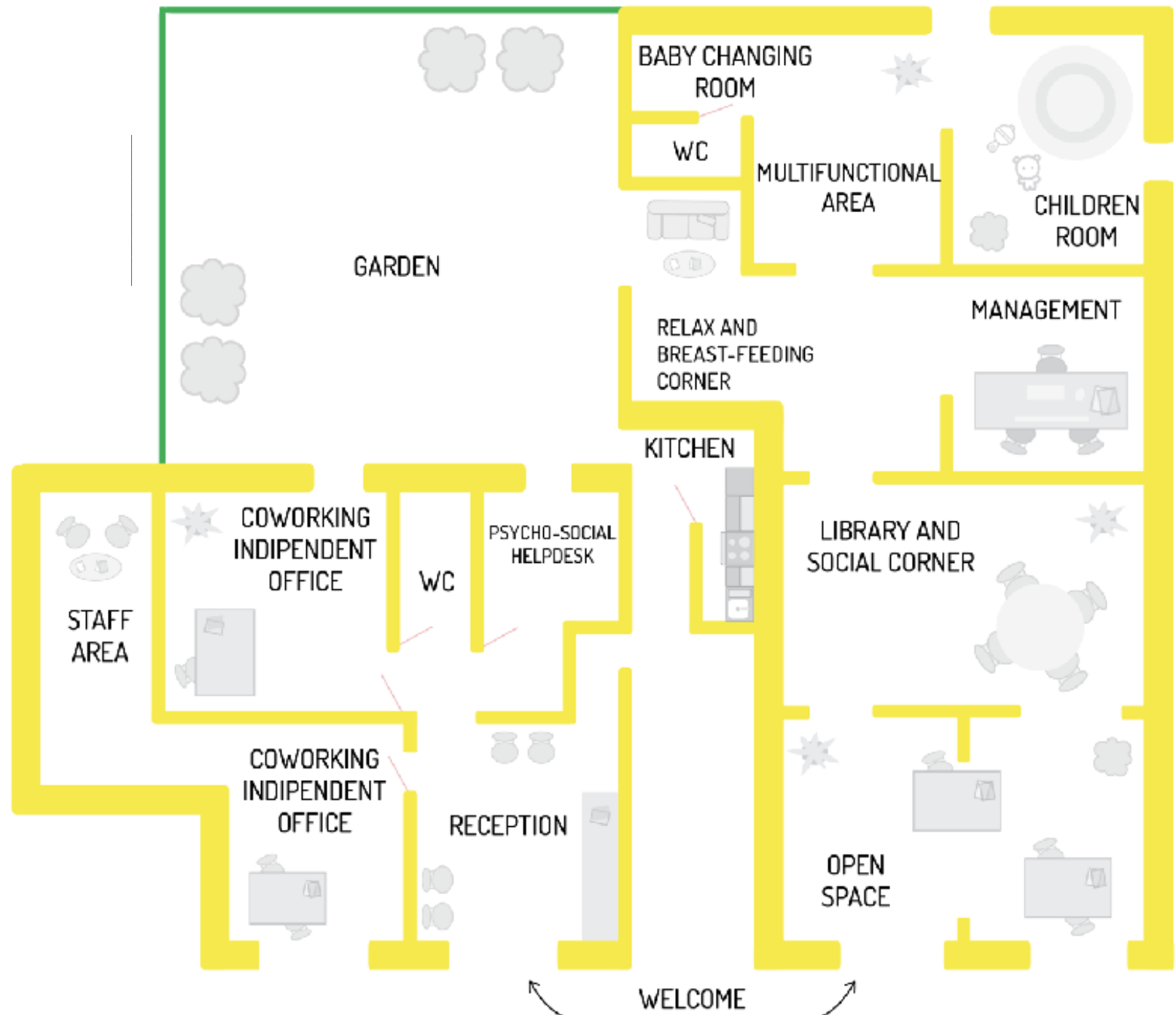
From 0 to 99 years old!

Current users: 85% **WOMEN**
(between 30 and 40 years old)

Women (employed and unemployed), freelancers, young people, associations, people just gone through situations of psychological and socio-economic distress, migrants



Map



#Interprofessional
cooperation network

#Time #quality
#saving

#Infant and baby
care area

#Relations

The **coworking space** that changes not only
your work but even your life!

#Work

#Multidisciplinary
working group

#Support



#Affordable
well-being

#Intergeneration
#interculture #gender
#environment

#Social and
professional
orientation

The **coworking space** for social innovation

Timebanking

#Aggregation
centre

#Social micro-
projects incubator





COWORKING + BABY AREA

Desk and/or
independent office

Conference room,
training, workshops

Registered office and
postal address

Secreteriat service

Specialized consultancy

Work orientation

Training courses

WHAT WE OFFER



CULTURAL ACTIVITIES

Parental support

User support desk

Labs for children
and adults

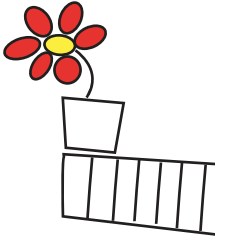
Playground and
vacation campus

Private parties
and other events

Homework support
and language courses

Cultural promotion

Ethical purchasing
group



FIELDS OF INTERVENTION AND ACTIONS



PSYCHO-SOCIAL AREA

Elaboration of an intervention plan - insured by one or more professionals - monitoring, and feedback.

An open, consolidated
**multidisciplinary
working group**

A free user support
desk for a
**personalized
response** and
support plan

A **Psycho-
Solidarity Centre**
(CPS)



EDUCATION AND PROFESSIONAL ORIENTATION

An individual or group program or both, aimed at making a conscious choice taking into account talents, interests and real opportunities.

Programs for PEOPLE

outgoing from situations of socio-economic and psychological distress:

- abused women
- mono-parental families
- migrants

Programs for COMPANIES

to manage the post-maternity periods of their employees:

- soft skills
- role replacement
- enhancement and empowerment of women's talent



INCUBATOR FOR MICRO-PROJECTS

Support to the creation, launch and development of social innovation projects.

1. **Analysis** of the proposal (potential, competitors and innovation)
2. Development of **skills** (recognizing the value, specificity and limits of the professional figures involved to identify the complementary skills needed)
3. Creation of a **work team** (involvement of professionals and training on networking)
4. Targeting an integrated intervention **methodology** and the right **strategy** to launch the service



WORK-LIFE BALANCE

Flexible services, all available in a single space, to encourage your personal growth – human, professional, cultural, social – without giving up the participation to the well-being of your family members.

Training centre and
parental support

Well-being and free
time

A space for aggregation,
cultural promotion and
awareness on social
issues

For **companies**: an integrated system of non-monetary services that allows to improve the company's productivity and the employees' well-being at the same time, by increasing their spending power and bettering their working and private life.



CO-STANZA Human Resources

Our professionals

Designer and
communication
expert



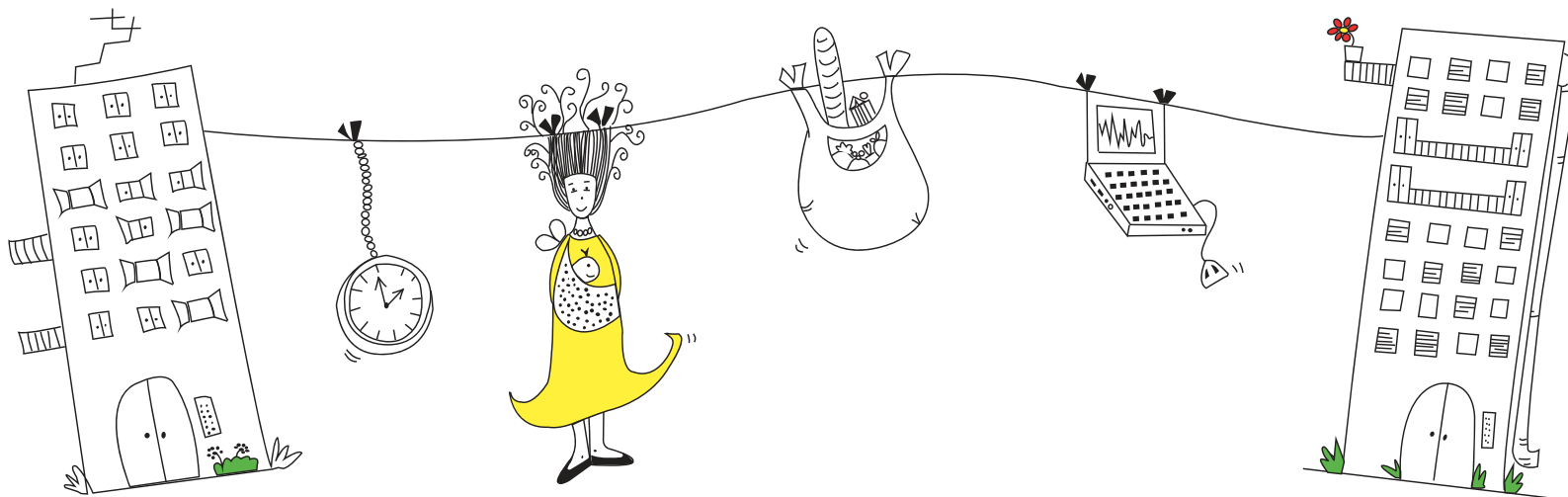
Artists:
musicians,
painters, tailors,
circus
professionals

Sports coaches

Psychotherapists, pedagogists,
speech therapists,
neuropsychomotricists,
osteopaths, dietitians,
counselors, professional
educators, language teachers,
lawyers.

YOU





Associazione Co-Cò
Spazio CO-STANZA
Via del Ponte alle Mosse,
32-38 rosso - Firenze

Phone: +39 055 2741095
www.spaziocostanza.it
info@spaziocostanza.it