



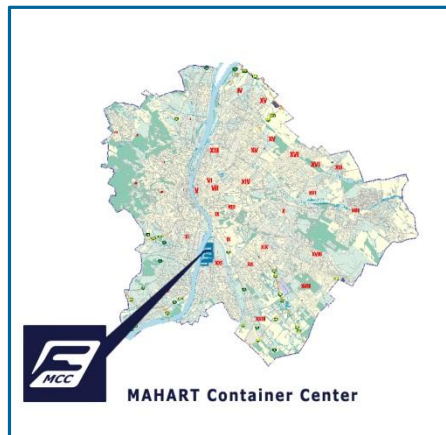
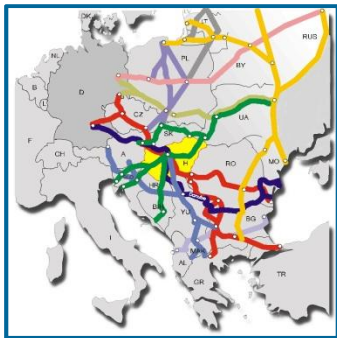
# Introduction of MAHART Container Center

2019

[www.containercenter.hu](http://www.containercenter.hu)

Rail Road  
River

- Mahart Container Center seated in the crossing point of TEN corridors
- Mahart Container Center situated on the southern part of Budapest at the northern corner of Csepel island, at the riverside of Danube and close to the main marshaling rail station in Budapest (Budapest-Ferencváros).
- 60 hectares represents a functional area, while 40 hectares wait for further development.

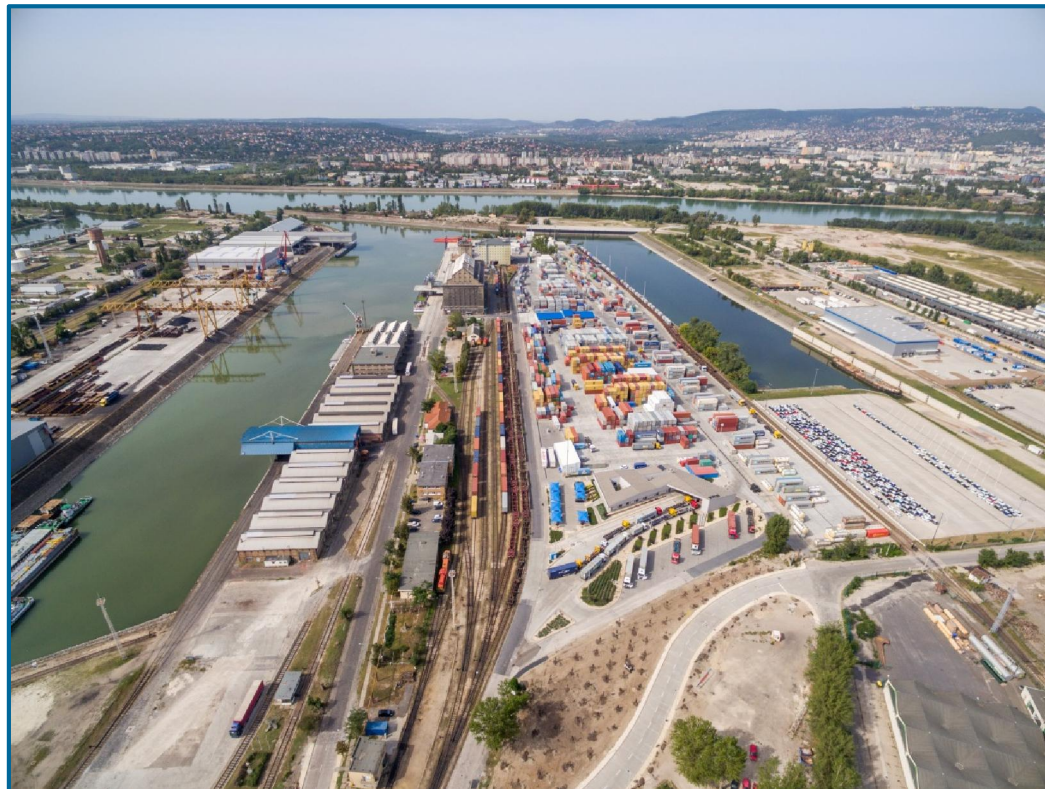




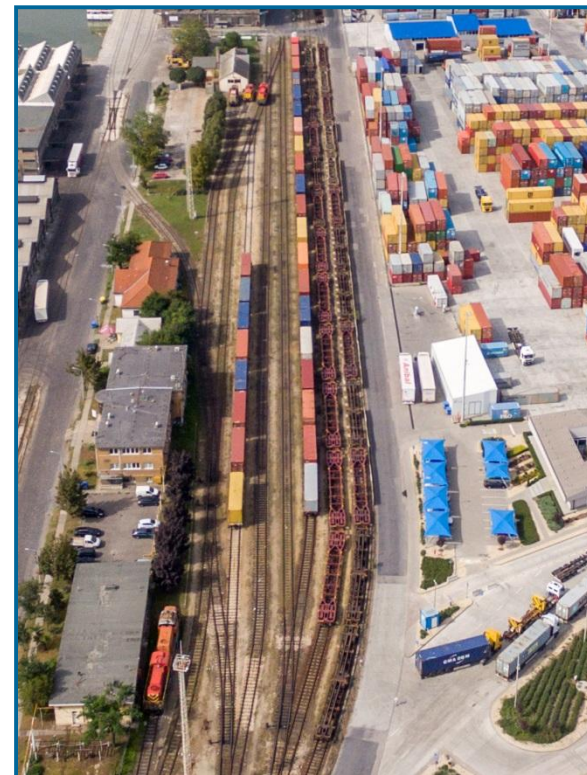
## Accessibility of MCC

Rail Road  
River

- Main marshaling rail station (Budapest-Ferencváros): 2,5 km.
- M0 motorway: 7 km.
- Budapest airport: 12 km.
- City center: 6 km.



- Private marshaling yard („Budapest-Kikötő” – tariff point) with 8 shunting tracks.
- Length of private rail tracks: 25,2 km.
- Shunting locos: 3 diesel locos.
- Availability of shunting services: 24/7.





**Mahart Container Center is a private, neutral terminal operator in Hungary.**

**Ownership structure:**

- **50% of shares owned by High Yield Ltd.**
- **50% of shares owned by WINTCO Ltd.**



- 11,1 ha storage area (111.000 sqm)
- storage capacity of 7.100 TEU
- annual handling capacity of 230.000 TEU
- 2×690 m + 3×300 m rail sidings
- 220 m quay length
- 1×RMG (32 t)
- 6×loaded container handler reachstackers (Kalmar, 45 t)
- 4×empty container handler reachstacker (Kalmar, 11 t)
- 2 terminal tractors
- 72×reefer plugs
- repair shop for dry & reefer containers
- dedicated storage place for hazardous containers
- custom examining / stuffing & stripping yard
- Operating and opening on road-rail-river side 24 hours a day, 7 days a week
- 65 employee

ADR storage place

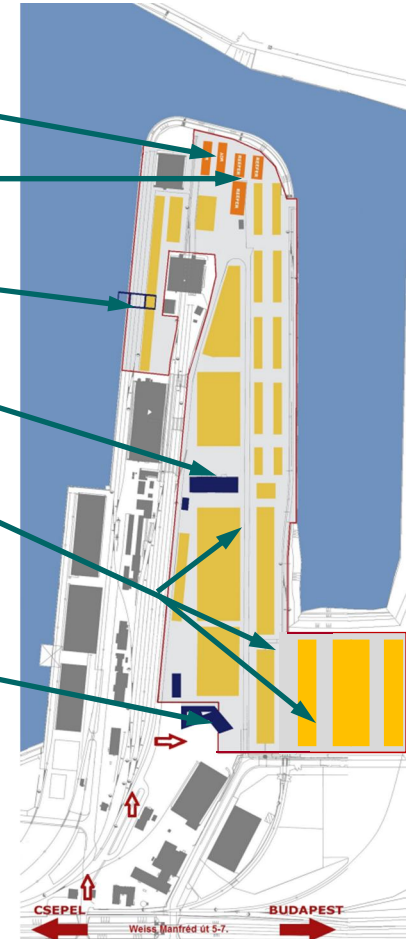
Reefer plugs

RMG

Repair shop

Storage areas

Office building and terminal gate





- Handling of shuttle trains in the following relations:
  - Budapest-Bremenhafen, Budapest-Trieste,
  - Budapest-Koper, Budapest-Herne, Budapest-China,
  - Budapest-Rijeka, Budapest-Wels, Budapest-Brno
- Handling barges in the following relation:
  - Constanta-Budapest
  - Budapest-Vienna/Enns/Linz

- Handling and storage of containers, semi-trailers, WAB/SWAP units
- Road haulage,
- Handling of reefer containers,
- Handling of hazardous containers
- Depot for empty containers,
- Container examination,
- Container repairs, cleaning,
- Flexi-tank, inliner, thermoliner fitting,
- Customs services,
- Stuffing & stripping services.



Copyright: Mahart Container Center Ltd. 2012

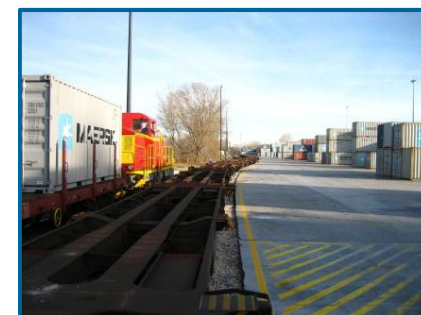


# Blocktrain services from MCC

Rail Road River

## Blocktrain projects and rail operators from MCC in 2019:

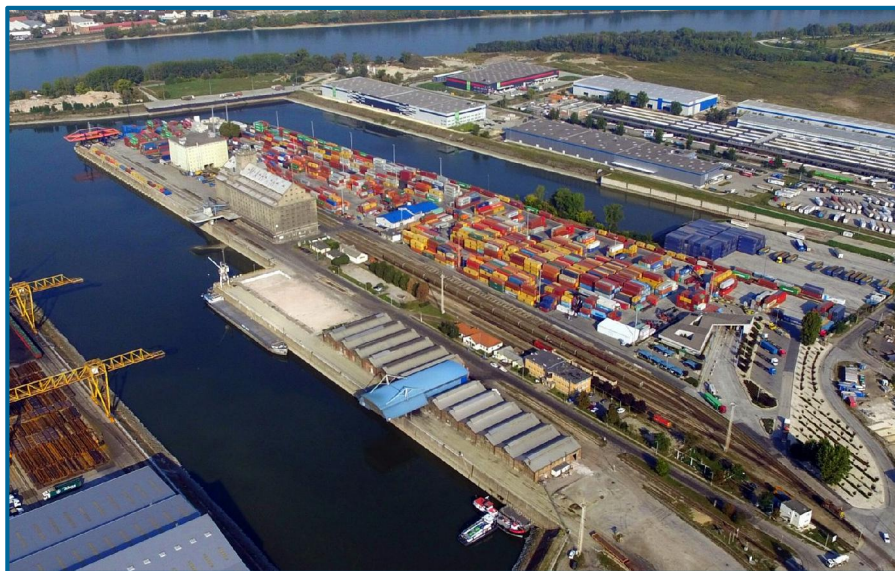
| Operator     | Railway company    | Relation                       | Weekly roundtrips | Company train or Opened for every client |
|--------------|--------------------|--------------------------------|-------------------|--|
| EISA         | SLOVRAEL           | MCC-Dobra-Khorgos-Xian/Chengdu | spot              | Opened train                             |
| EP Logistic  | AWT                | MCC-Koper                      | spot              | Opened train                             |
| Kombiverkehr | GySEV              | MCC-Wels-further relations     | 3                 | Opened train                             |
| TX Logistic  | GySEV              | MCC-Herne                      | 6                 | Opened semi-trailer train                |
| MAERSK       | PPD/AWT/CRW        | MCC-Rijeka                     | 4-5               | Company train                            |
| MAERSK       | CD Cargo           | MCC-Bremenhaven                | 3                 | Company train                            |
| MSC          | EP Cargo/Carborail | MCC-Brno                       | 2                 | Company train                            |
| MSC          | StLB               | MCC-Salzburg/Linz              | spot              | Company train                            |
| RTSB         | RCO                | MCC-Malaszewicze-Jinan         | spot              | Opened train                             |
| T.O. Delta   | RCA                | MCC-Trieste                    | 14                | Opened train                             |



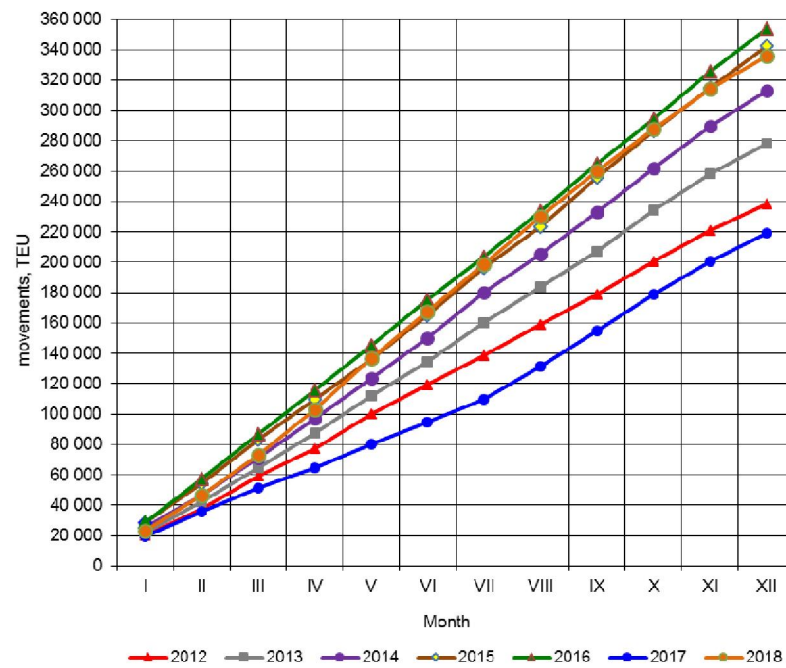


## Traffic in 2018:

- 335.920 TEU handlings
- 201.300 container movement
- 2.074 trains
- 55,1 % loaded containers
- 44,9 % empty containers



Container movements in TEU





**Thank You for your  
attention!**

**MAHART Container Center Ltd.**

**📍 H-1211 Budapest, Weiss Manfréd str. 5-7.**

**☎ +36-1-278-3178, 278-3134, 278-3232**

**📄 +36-1-277-0167**

**📧 mail@containercenter.hu**

**🌐 www.containercenter.hu**