

PAPER PROVINCE

A Forest Bioeconomy Cluster in central Sweden

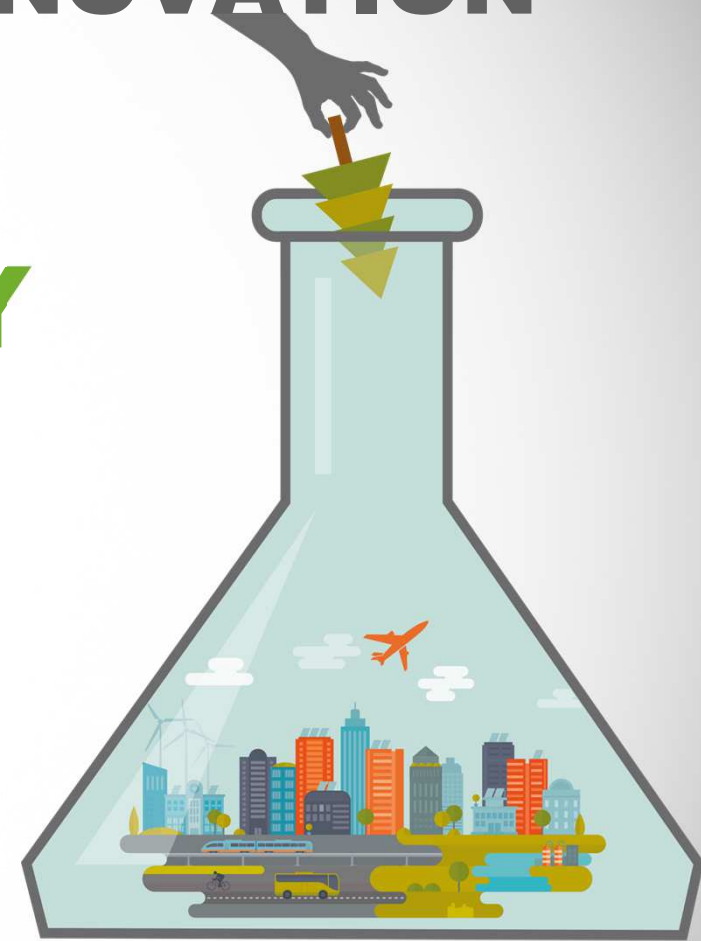
- Some 100 member companies
- Some 7000 employees in the member companies
- The cluster organisation's turnover: EUR 2.2 m (2018)
- Member companies' turnover: EUR 2.2 bn (2015)
- Nationally prioritised innovation cluster since 2013
- Cluster Management Excellence Gold Label 2018



PAPER PROVINCE AND INNOVATION

REALISING THE #FORESTBIOECONOMY

- Supporting innovation of disruptive services and technology
- Developing new materials, products and services
- Developing a regional demonstrator



SMART SPECIALISATION, VÄRMLAND

Value-Creating Services

Forest-Based Bioeconomy

**Digitalisation of
Welfare Services**

Nature, Culture and Place
Based Digitalised Experiences

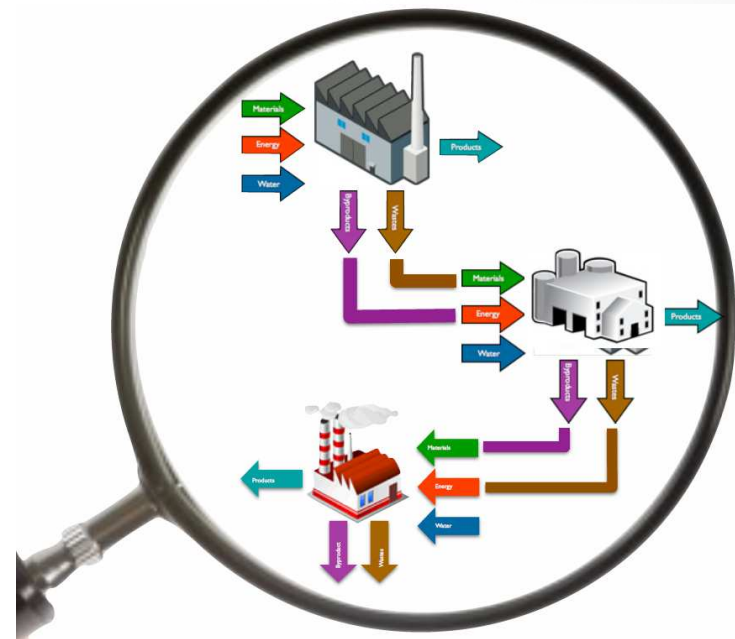
**Advanced Manufacturing
and Complex Systems**

System Solutions
with Photovoltaics

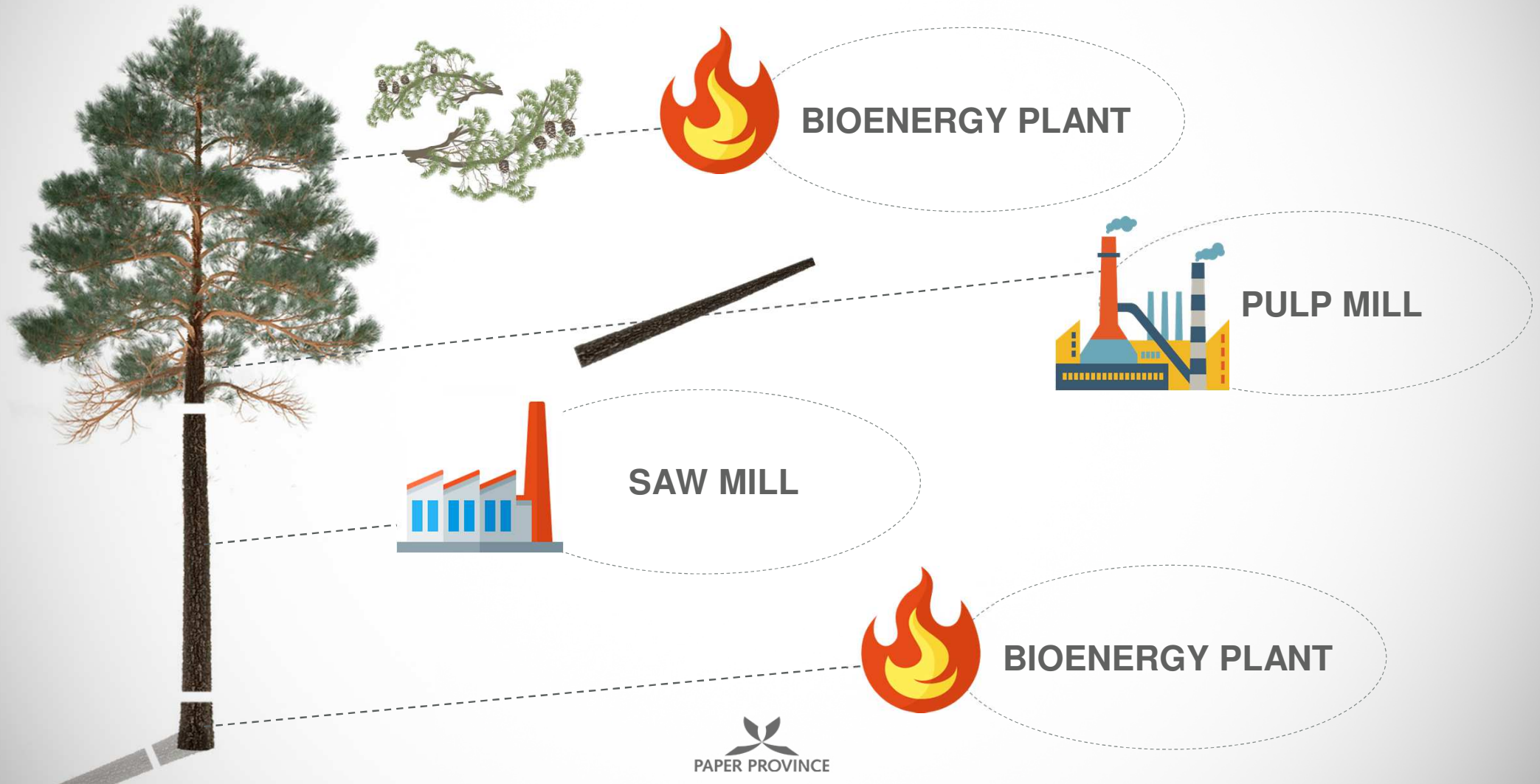
INDUSTRIAL SYMBIOSIS

Industrial symbiosis is about the clustering and networking of companies in different industries, supporting institutions and organisations.

One company's secondary resource ("waste") becomes another company's primary resource.

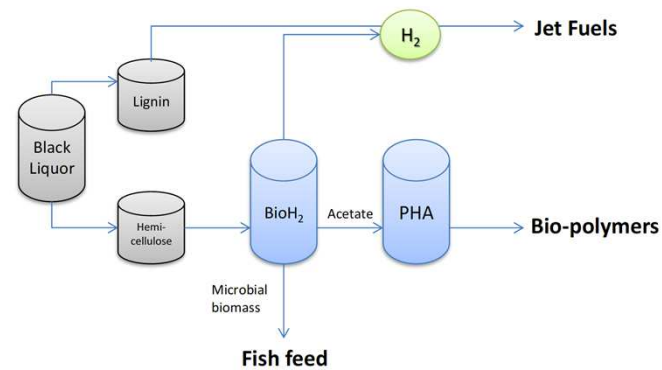
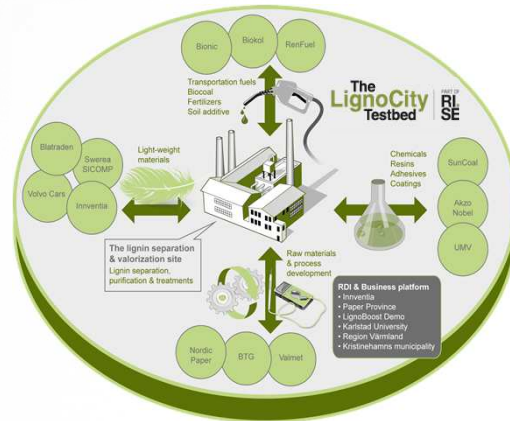


INDUSTRIAL SYMBIOSIS STARTS IN THE FOREST



INDUSTRIAL SYMBIOSIS

FOCUS ON SIDE AND WASTE STREAMS



BALTIC INDUSTRIAL SYMBIOSIS

- Interreg Baltic Sea Region Programme
Capacity for Innovation priority, *Smart Specialisation* objective
- 1 January 2019 to 30 September 2021
- Total budget EUR 2.3 million.
- Project partners: from five BRS states (DK, SE, FI, NO, PL) and associated partners from six BSR states.



HOW WE FACILITATE INDUSTRIAL SYMBIOSIS

- 1) Industrial Symbiosis provides great opportunities for increasing cost effectiveness in SMEs but few companies currently take advantage of these opportunities.
- 2) Build capacity among cluster managers and practitioners to better identify and facilitate opportunities for resource exchanges that leads to re-use and up-cycling
- 3) Improve the general knowledge base both amongst the current and future generation of Industrial Symbiosis practitioners.
- 4) Capacity building amongst regional development authorities and business development organisations
- 5) Regions from beyond the partnership could benefit from taking advantage of the industrial symbiosis sustainable development approach, including as part of Smart Specialisation Strategies.

LIVING LABS

Core features of a living lab

- Experimental approaches in a real-life context
- User involvement
- Collaboration and co-creation of knowledge



PAPER PROVINCE

paperprovince.com

[linkedin.com/company/the-paper-province](https://www.linkedin.com/company/the-paper-province)

twitter.com/paperprovince

facebook.com/paperprovince

