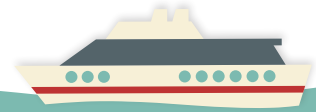


website >> <https://locations.interreg-med.eu>



## Low carbon transport plans will bring several advantages:



### ENHANCED MOBILITY AND ACCESSIBILITY

- Reduced traffic and more fluid urban mobility
- Balanced development and integration of different transport modes
- Better use of urban spaces and of existing transport infrastructure and services



### SAFEGUARDED ENVIRONMENT AND HEALTH

- Reduced air/noise pollution and energy consumption
- More sustainable exploitation of natural resources
- Improved wellbeing and quality of life for citizens



### ENHANCED SOCIO-ECONOMIC GROWTH AND DEVELOPMENT

- Increased territorial overall attractiveness
- Encouraged new investments and increased business opportunities
- Increased opportunities for new services and job creation



### IMPROVED CRUISE PASSENGERS' EXPERIENCE

- Optimized cruise passengers flows
- Safer and more comfortable port environment and terminals
- Higher quality sustainable services such as low carbon excursions

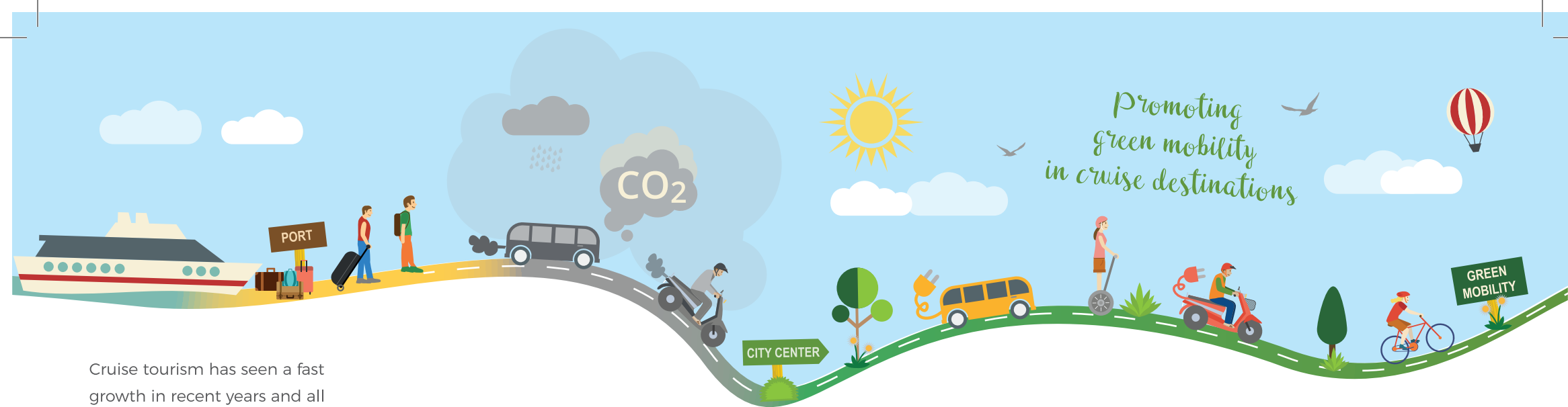


## PROJECT PARTNERS

AREA SCIENCE PARK - Lead Partner  
Albanian Institute of Transport  
CIRCE - Research Centre for Energy Resources and Consumption  
City of Zadar

Durres Port Authority  
Lisbon City Council  
LISBOA E-NOVA  
Málagaport  
Municipality of Ravenna

Port of Rijeka Authority  
Port System Authority of the Eastern Adriatic Sea  
Regional Energy Agency Kvarner



Cruise tourism has seen a fast growth in recent years and all MED coastal regions are willing to take advantage of the benefits generated in terms of economic growth, development, reputation and visibility.

**MED cruise destination cities** are faced with two conflicting needs: boosting cruise-related profits and other positive externalities, while mitigating the negative impacts exerted on cruise destinations, that affect their **natural environment and urban mobility**, triggering sometimes significant multifold repercussions on **cultural heritage and local communities**.

## LOCATIONS Low Carbon Transport in Cruise Destinations Cities

LOCATIONS project will contribute to decongest cruise destinations' traffic and to decrease greenhouse gases emissions in targeted territories through a larger use of innovative sustainable **transport solutions**, thus improving the overall **quality of life** of both citizens and passengers and increasing port attractiveness for cruise ships and cruise liners.

Cooperating transnationally and acting locally: by merging highly relevant scientific know-how, technical skills and expertise,

institutional capacity and extensive knowledge of local and sector-specific contexts, project partners will jointly develop a standardized, transnational, easily replicable operational model, capable of valorizing each territory's expertise. Local stakeholders of **7 port cities – Lisbon, Malaga, Ravenna, Trieste, Rijeka, Zadar and Durres** – will support decision making and elaboration process of local sustainable mobility and transport tools to respond to **sustainable connections** needs between city and port.

**Local low carbon transport plans**, gathering **tailored measures** to improve sustainable mobility of people and goods related to cruise flows will be integrated in local regulatory frameworks to further increase cruise cities **attractiveness** and **sustainability**. Specific identified measures will be tested and implemented by means of pilot actions, while additional funding sources to implement plans will be identified to ensure further investment in the sector.

