



 EuroVelo  
*the European cycle route network*

# La rete ciclabile EuroVelo e lo Standard Europeo di Certificazione delle ciclovie

# Rete di 16 ciclovie in tutti i paesi Europei

## 70.000 km

The 16 EuroVelo routes, together with their total distance when complete, are:

### North – South Routes:

- 1 – **Atlantic Coast Route**: North Cape – Sagres 8,186 km
- 3 – **Pilgrims' Route**: Trondheim – Santiago de Compostela 5,122 km
- 5 – **Via Romea Francigena**: London – Rome and Brindisi 3,900 km
- 7 – **Sun Route**: North Cape – Malta 7,409 km
- 9 – **Baltic – Adriatic**: Gdansk – Pula 1,930 km
- 11 – **East Europe Route**: North Cape – Athens 5,984 km
- 13 – **Iron Curtain Trail**: Barents Sea – Black Sea 10,400 km
- 15 – **Rhine Cycle Route**: Andermatt – Hoek van Holland 1,320 km
- 17 – **Rhone Cycle Route**: Andermatt – Mediterranean 1,115 km
- 19 – **Meuse Cycle Route**: Pouilly-en-Bassigny – Hoek van Holland 1,152 km

### West – East Routes:

- 2 – **Capitals Route**: Galway – Moscow 5,500 km
- 4 – **Central Europe Route**: Roscoff – Kiev 4,000 km
- 6 – **Atlantic – Black Sea**: Nantes – Constanta 4,448 km
- 8 – **Mediterranean Route**: Cádiz – Athens and Cyprus 5,888 km

### Circuits:

- 10 – **Baltic Sea Cycle Route** (Hansa circuit): 7,980 km
- 12 – **North Sea Cycle Route**: 5,932 km

**Total network:** Over 70,000 km







# EuroVelo 8 Mediterranean Route

English Français Deutsch



# STANDARD EUROPEO DI CERTIFICAZIONE



1. Sistema di analisi dello stato di fatto di una ciclovia



- Identifica le criticità
- Delinea un piano d'azione
- Promuove investimenti per migliorare la ciclovia

Sviluppo delle ciclovie



2. Strumento di controllo qualità di una ciclovia (audit)

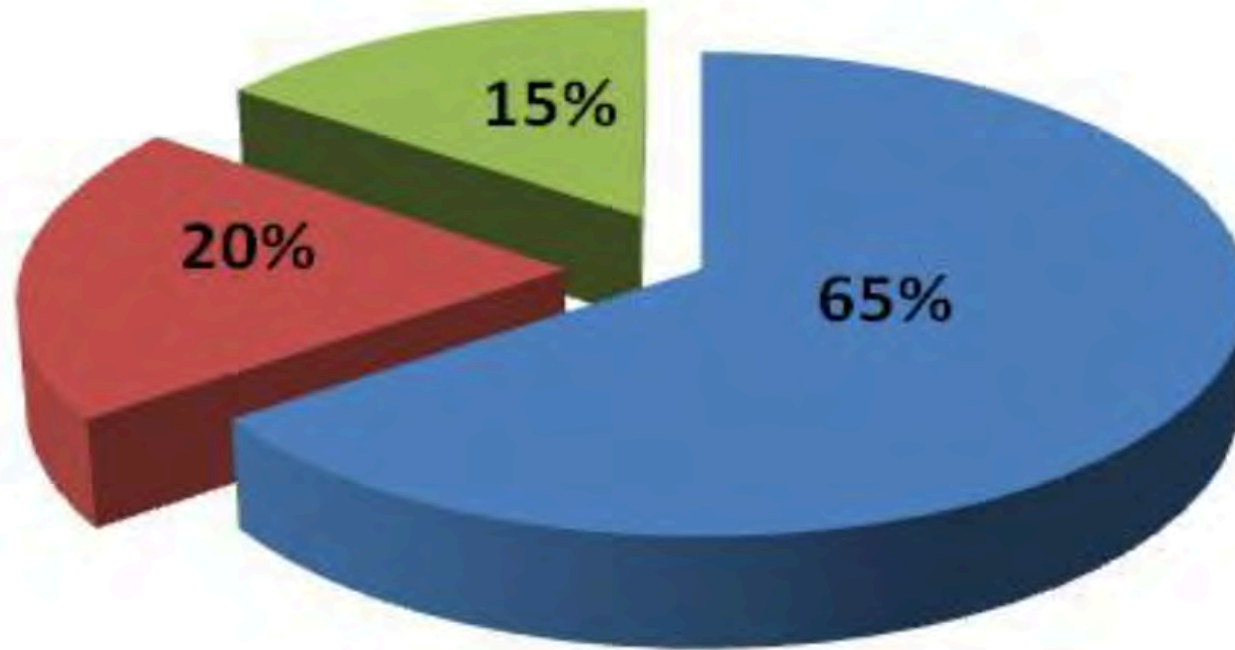


- Comunica agli utenti il livello di qualità di una ciclovia

Marketing delle ciclovie



# STANDARD EUROPEO DI CERTIFICAZIONE



- infrastruttura
- servizi
- comunicazione e promozione



# STANDARD EUROPEO DI CERTIFICAZIONE



# CICLISTI

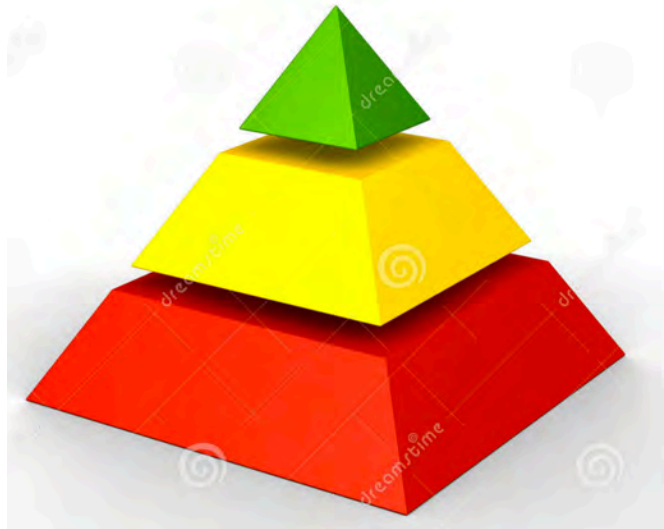
## Esperti

## Occasionali

## Esigenti



# STANDARD EUROPEO DI CERTIFICAZIONE



## REQUISITI DELLA CICLOVIA

- essenziali
- importanti
- aggiuntivi + ulteriori



# Ciclovia Mediterranea EV8 FVG2 e Standard Europeo di Certificazione: analisi del tracciato e principali criticità



# EuroVelo 8 Mediterranean Route









# EuroVelo 8 Mediterranean Route



Veneto ← 213 km → SLO





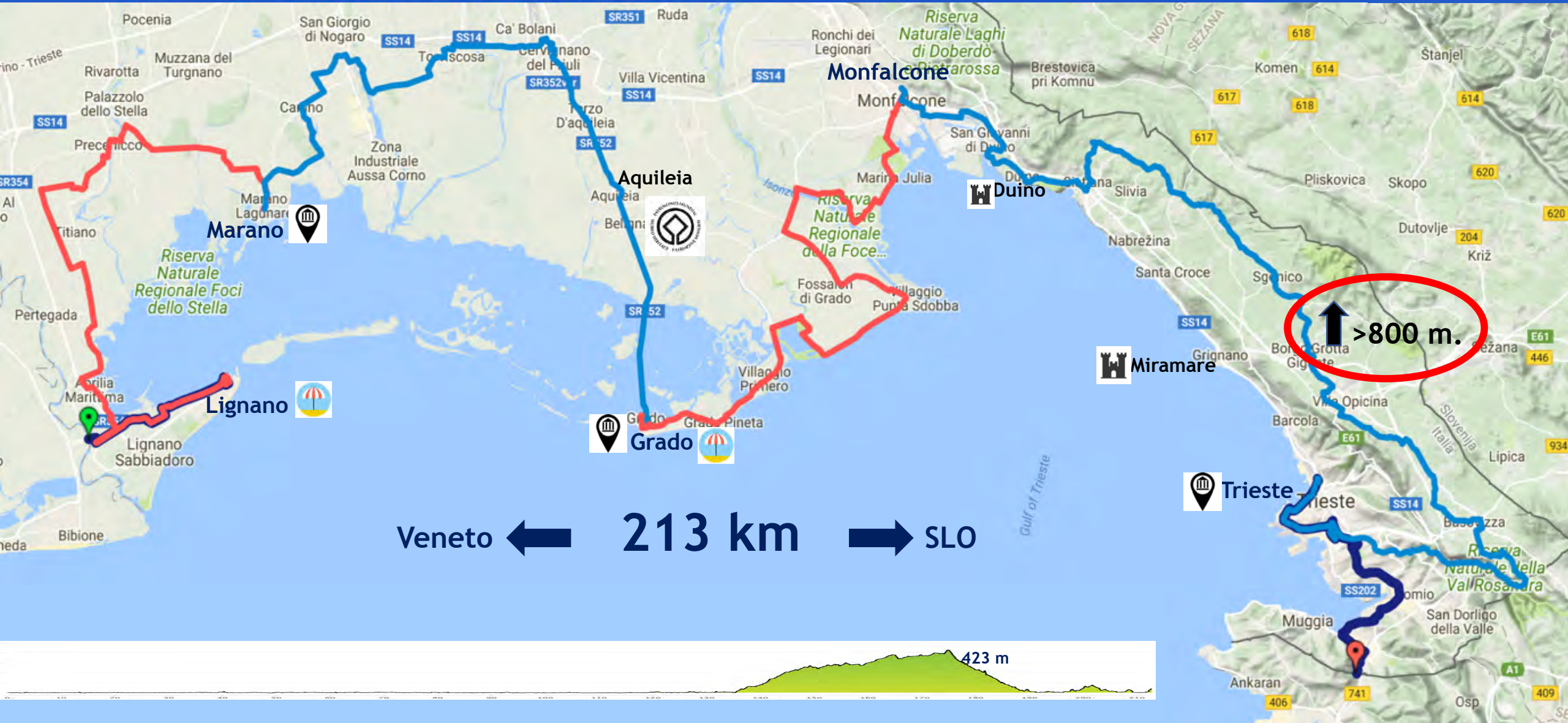
# EuroVelo 8 Mediterranean Route



Veneto ← 213 km → SLO



# EuroVelo 8 Mediterranean Route



# INFRASTRUTTURA

## Infrastructure criteria met by section

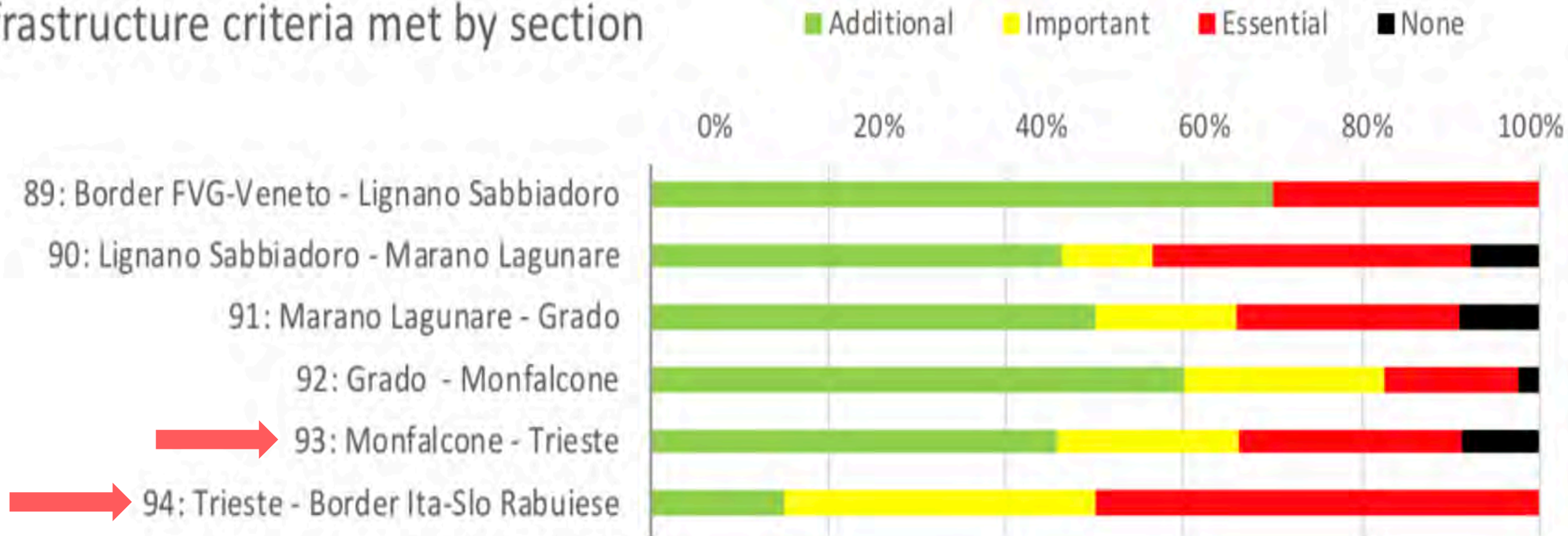
■ Additional   ■ Important   ■ Essential   ■ None

0%   20%   40%   60%   80%   100%

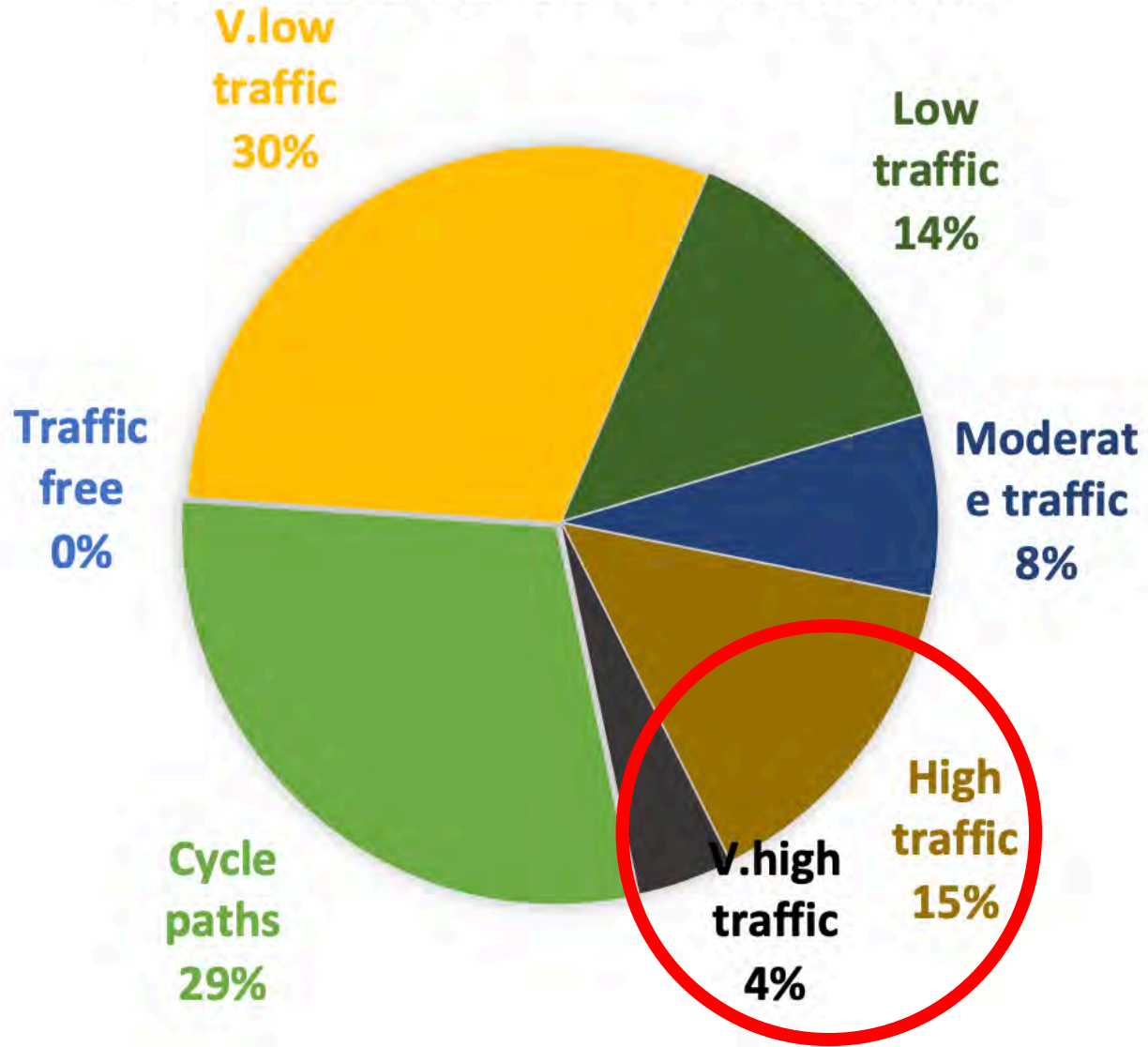


# INFRASTRUTTURA

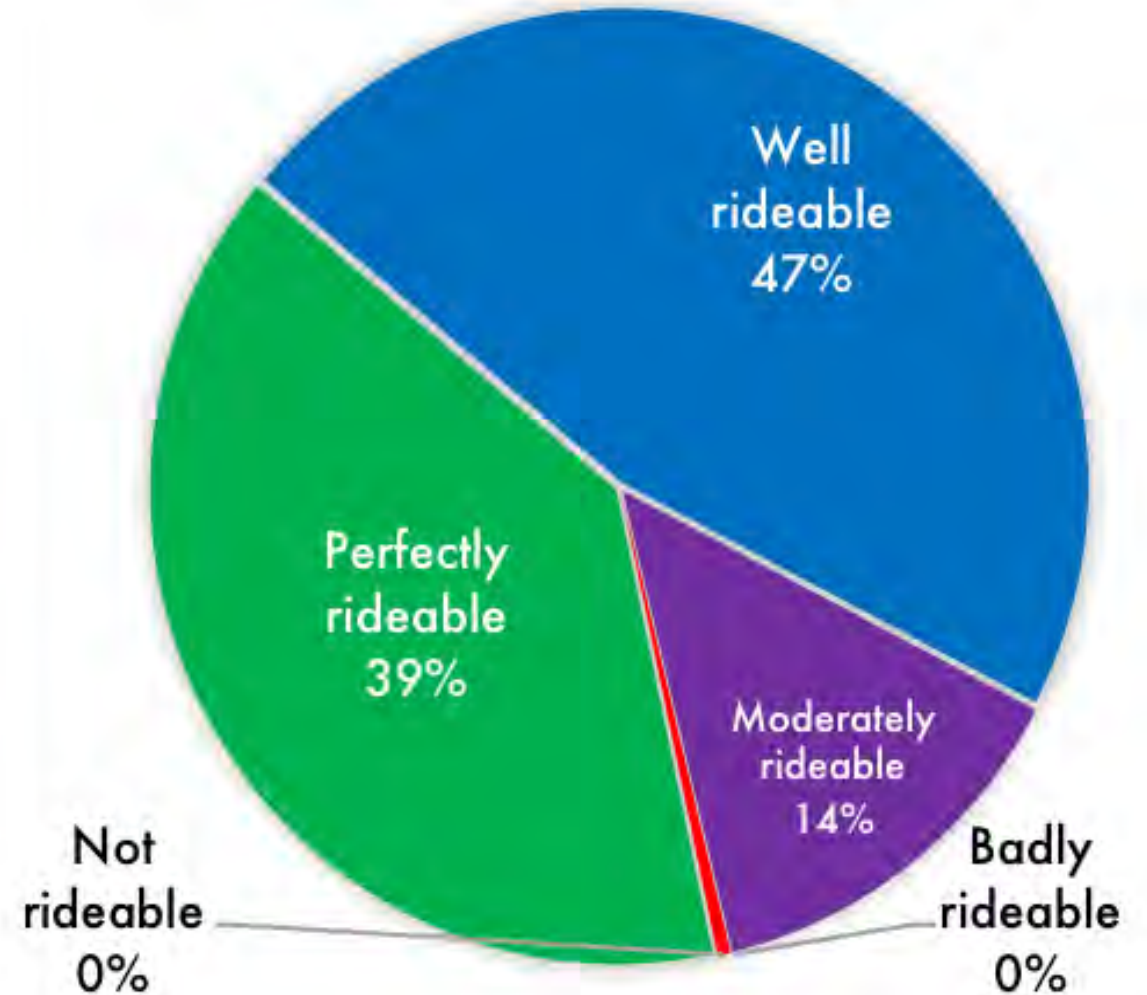
Infrastructure criteria met by section




# FVG ROUTE COMPONENTS




# FVG SURFACE QUALITY



Label	Length (km)	CONTINUITY				ROUTE COMPONENTS							CROSSINGS	
		km	Entry forbidden	Stairs	Chicanes <1.3m	Cycle paths	Traffic free	V.low traffic	Low traffic	Moderate traffic	High traffic	V.high traffic	Dangerous	V.dangerous
		221	4	3	13	64	0	67	31	17	32	10	6	1
			1,8%	1,4%	5,9%	29,0%	0,0%	30,3%	14,0%	7,7%	14,5%	4,5%	2,7%	0,5%
			3	3	6					3	6	2	3	1
			50%	50%	100%					50%	100%	33%	50%	17%
89: Border FVG-Veneto - Lignano Sabbiadoro	8,3	10	0	1	1	2	0	6	0	0	2	0	1	0
90: Lignano Sabbiadoro - Marano Lagunare	37,5	39	2	1	2	4	0	23	4	0	8	0	0	0
91: Marano Lagunare - Grado	42,5	44	1	1	3	17	0	12	4	3	5	3	3	1
92: Grado - Monfalcone	38,8	40	1	0	2	16	0	20	1	0	3	0	0	0
93: Monfalcone - Trieste	66,6	68	0	0	2	18	0	5	22	12	4	7	0	0
94: Trieste - Border Ita-Slo Rabuiese	19	20	0	0	3	7	0	1	0	2	10	0	2	0



Label	Length (km)	km	CONTINUITY			ROUTE COMPONENTS							CROSSINGS	
			Entry forbidden	Stairs	Chicanes <1.3m	Cycle paths	Traffic free	V.low traffic	Low traffic	Moderate traffic	High traffic	V.high traffic	Dangerous	V.dangerous
		221	4	3	13	64	0	67	31	17	32	10	6	1
			1,8%	1,4%	5,9%	29,0%	0,0%	30,3%	14,0%	7,7%	14,5%	4,5%	2,7%	0,5%
			3	3	6					3	6	2	3	1
			50%	50%	100%					50%	100%	33%	50%	17%
89: Border FVG-Veneto - Lignano Sabbiadoro	8,3	10	0	1	1	2	0	6	0	0	2	0	1	0
90: Lignano Sabbiadoro - Marano Lagunare	37,5	39	2	1	2	4	0	23	4	0	8	0	0	0
91: Marano Lagunare - Grado	42,5	44	1	1	3	17	0	12	4	3	5	3	3	1
92: Grado - Monfalcone	38,8	40	1	0	2	16	0	20	1	0	3	0	0	0
93: Monfalcone - Trieste	66,6	68	0	0	2	18	0	5	22	12	4	7	0	0
94: Trieste - Border Ita-Slo Rabuiese	19	20	0	0	3	7	0	1	0	2	10	0	2	0



5.1 Route infrastructure (length km 66,5)

CRITERIA		COMMENTS	
CONTINUITY	Entry forbidden	0,0%	0
	Stairs	0,0%	0
	Chicanes <1.3m	2,9%	2
ROUTE COMPONENTS	Cycle paths	27,9%	18
	Traffic free	0,0%	0
	V.low traffic	7,4%	5
	Low traffic	32,4%	22
	Moderate traffic	17,6%	12
	High traffic	5,9%	4
	V.high traffic	8,8%	7
CROSSINGS	Dangerous	0,0%	0
	V.dangerous	0,0%	0
SURFACE	Perfectly rideable	75,0%	51
	Well rideable	4,4%	3
	Moderately rideable	20,6%	9
	Badly rideable	7,4%	5
GRADIENTS	Not rideable	0,0%	0
	Insufficient width	1,5%	1
	Cumulative elevation gain [m]		854
ATTRACTIVENESS	Cumulative elevation loss [m]		855
	Highest (gain/loss)/km [m]		
	Attractions	17,6%	12
SIGNING	Highly attractive area	11,8%	8
	Noise/ dust/ smell	0,0%	0
	Crime/ wild dogs	0,0%	0
	Monotonous	1,5%	1
SIGNING	National standard	22,1%	15
	EuroVelo	0,0%	0
	Missing/ wrong signs	0,0%	0



Monfalcone

Trieste



# Monfalcone

# Trieste

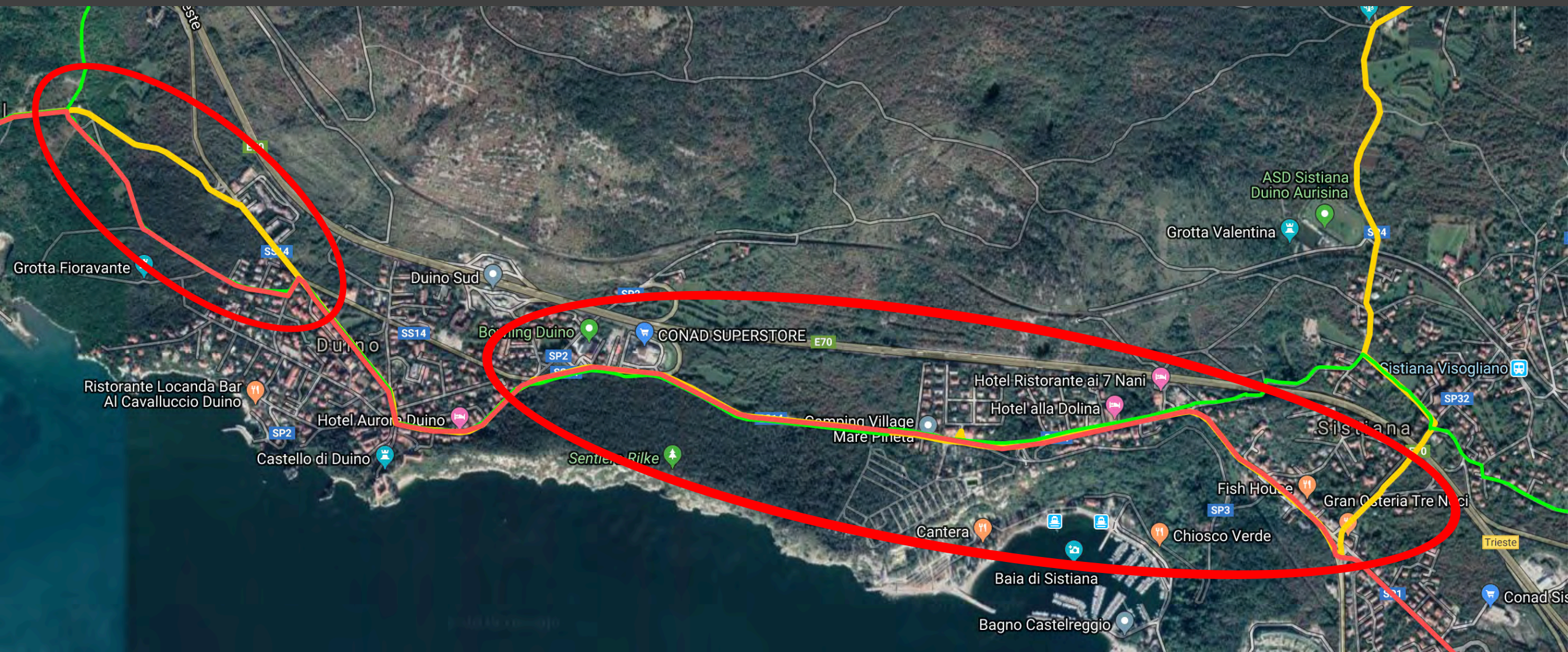


TOTAL ASCENT = 408 m (approx.)  
164 m

# Tipo di strada, traffico, velocità: km 6-7 (SS14)



# Tipo di strada, traffico, velocità: km 9-13 (SS14)



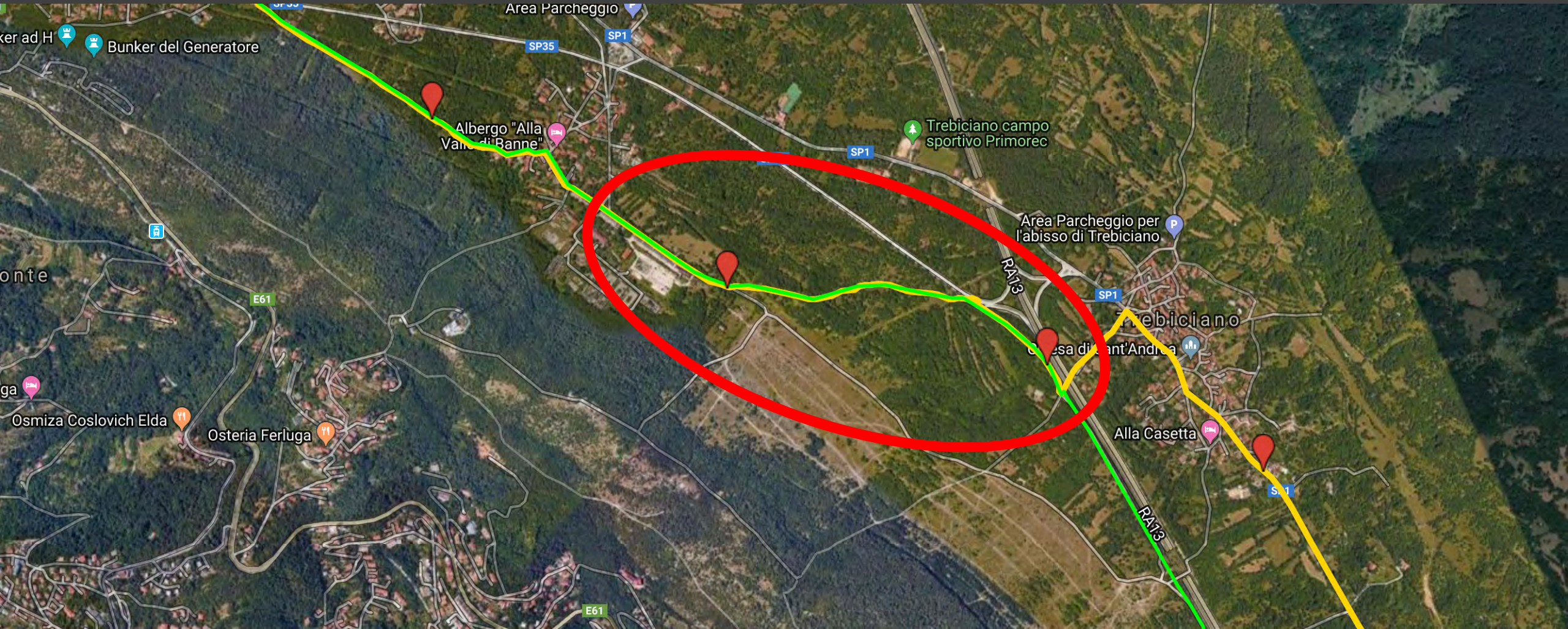
# Tipo di strada, traffico, velocità: km 40-43 (SP1)



# Fondo stradale dissestato (mtb): km 7



# Fondo stradale dissestato (mtb): km 38-39



# Fondo stradale dissestato (mtb): km 43-44



# Ridefinizione itinerario: ➔ da 67 a 30 km ⬆ da >800 m a 420



# Monfalcone

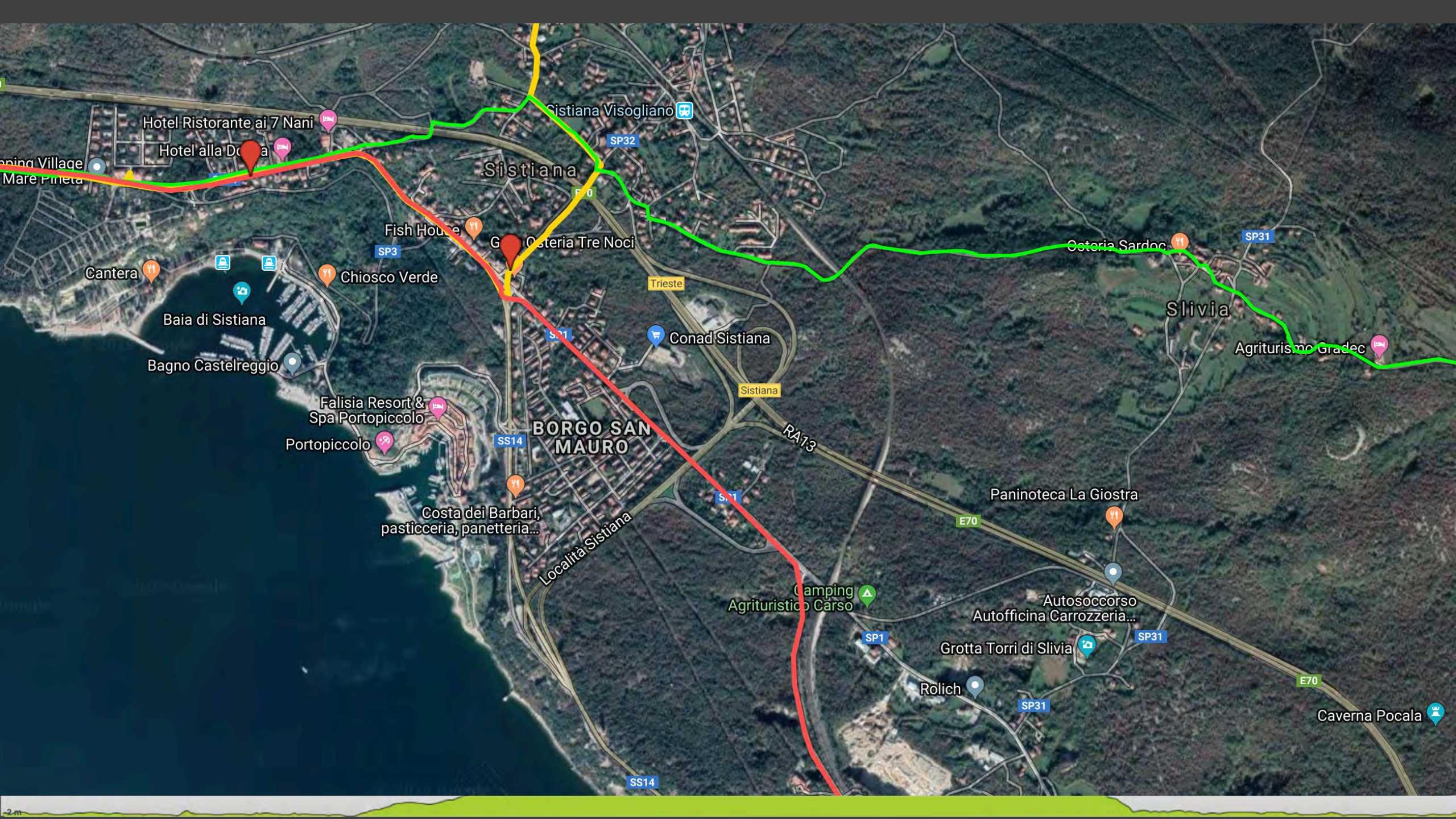
# Trieste



TOTAL ASCENT = 408 m (approx.)  
164 m

E | % X

-2 m



Hotel Ristorante ai 7 Nani

Hotel alla Donna

Sistiana Visogliano

Sistiana

Fish House

Osteria Tre Noci

Osteria Sardo

Cantera

Chiosco Verde

Trieste

Baia di Sistiiana

Conad Sistiana

Slivia

Agriturismo Gradec

Bagno Castelreggio

Falisia Resort & Spa Portopiccolo

Portopiccolo

BORGO SAN MAURO

Sistiana

Costa dei Barbari, pasticceria, panetteria...

Paninoteca La Giostra

Località Sistiana

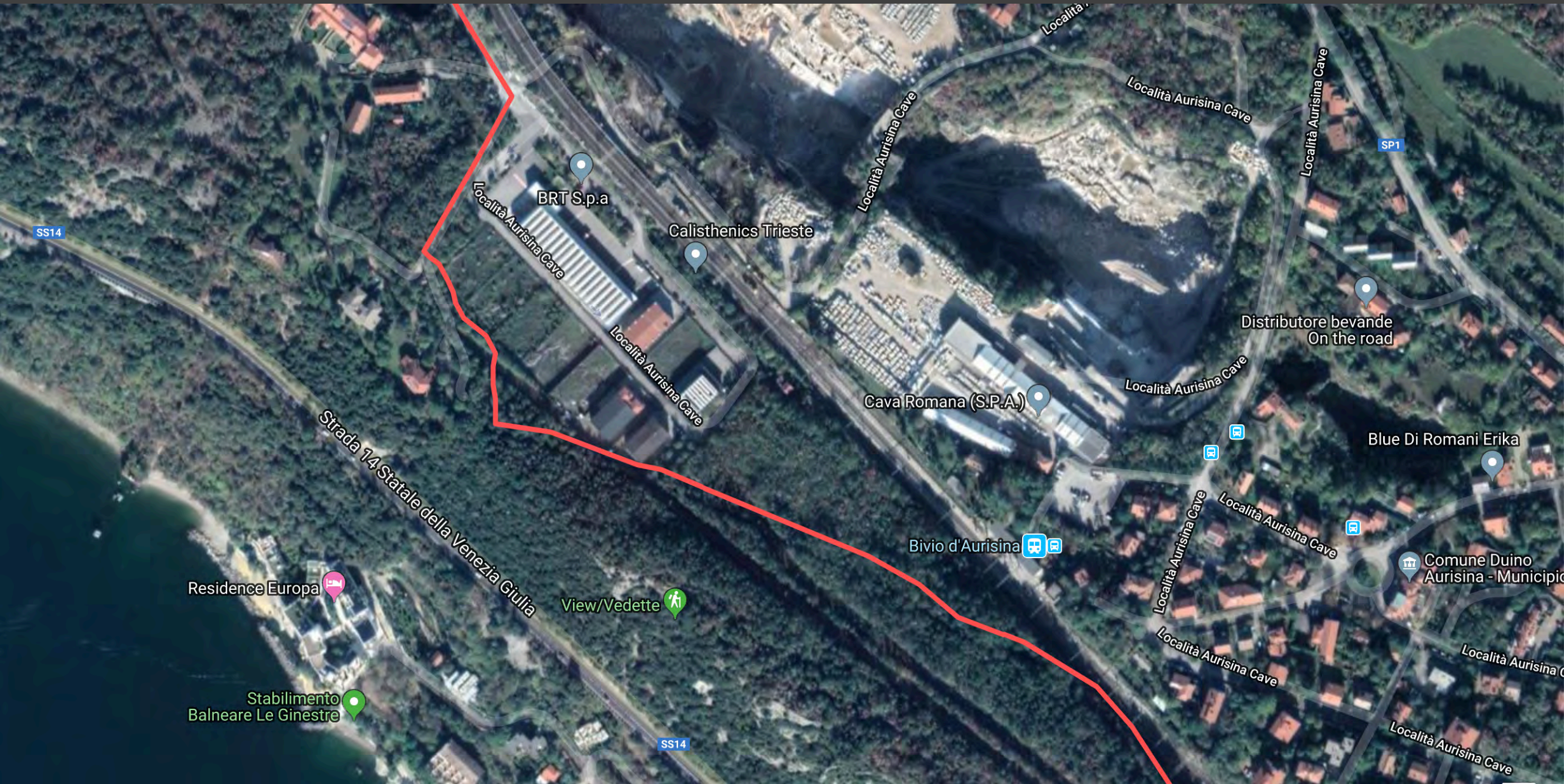
Camping Agriturismo Carso

Autosoccorso Autofficina Carrozzeria...

Grotta Torri di Slivia

Rolich

Caverna Pocala









## Via della Salvia



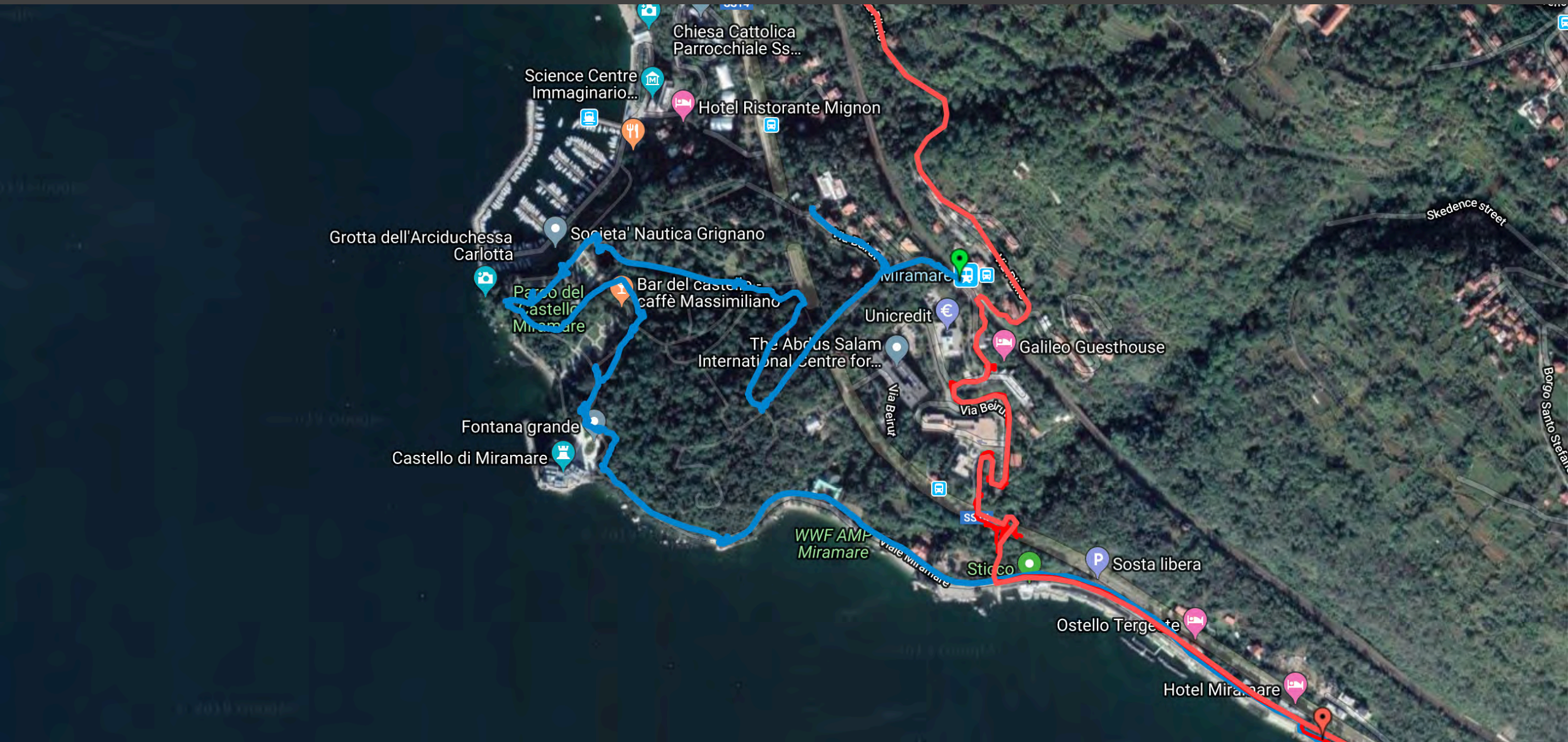




# Via del Pucino e via Plinio



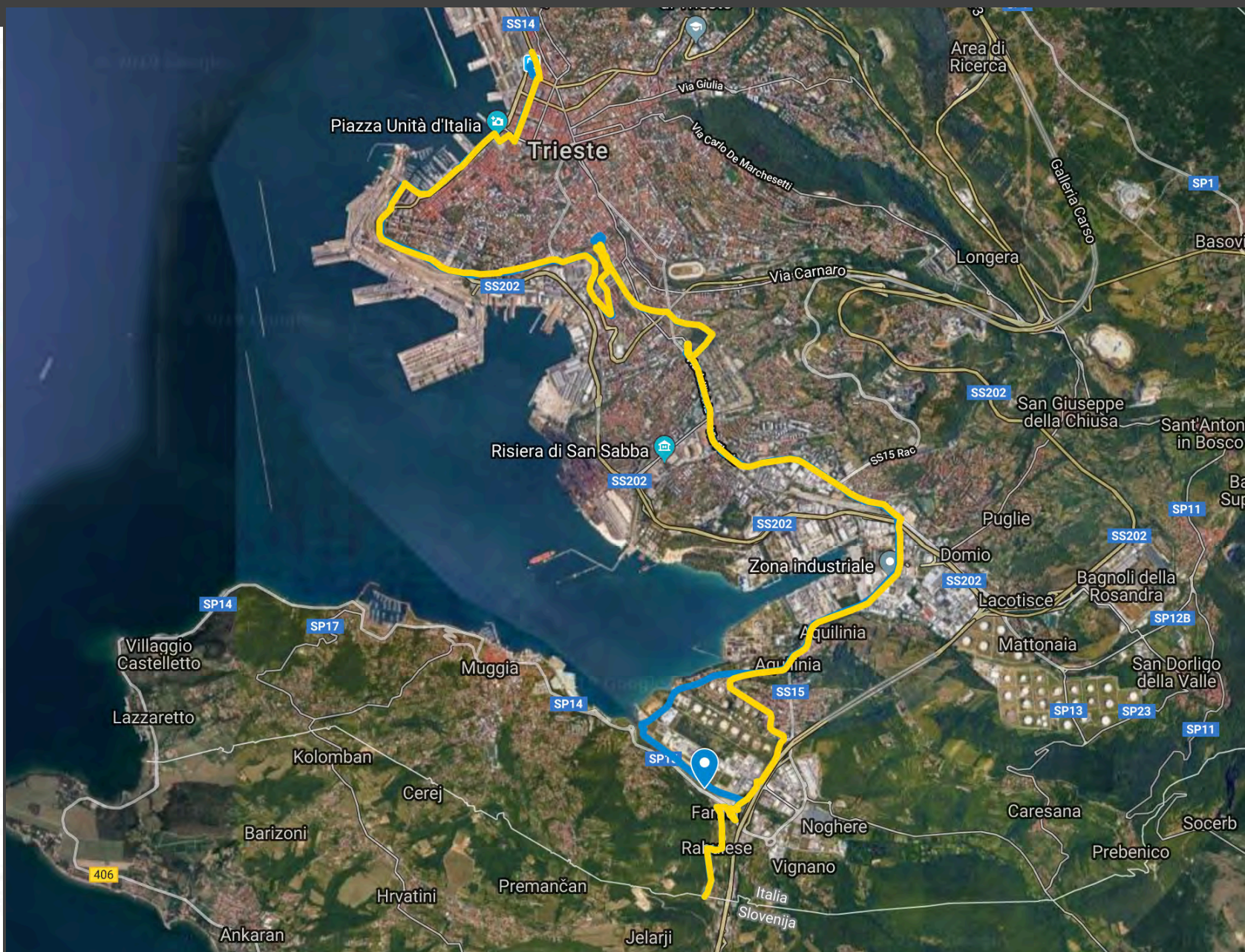






1.6.1 Route infrastructure (length km 19)

CRITERIA				COMMENTS
CONTINUITY	Entry forbidden	0,0%	0	
	Stairs	0,0%	0	
	Chicanes <1.3m	15,0%	3	some passages along the "ciclabile lungomare Trieste" (cycle/pedestrian path along the seafront in the city of Trieste) are too narrow, with poles and other obstacles: km 2-3 of the route track
ROUTE COMPONENTS	Cycle paths	35,0%	7	
	Traffic free	0,0%	0	
	V. low traffic	5,0%	1	
	Low traffic	0,0%	0	
	Moderate traffic	10,0%	2	
	High traffic	50,0%	10	Km 0-1 (Trieste, corso Cavour and Riva 3 Novembre); km 7 (Trieste, via G. Orlandini); km 10-16 (Trieste, via dell'Istria, via Flavia or SS15, SP14)
CROSSINGS	V. high traffic	0,0%	0	
	Dangerous	10,0%	2	These are found at km 16 of the route, at the left turn off via di Trieste (SP14), and at km 18, at the left turn where the cycle path crosses strada di San Clemente
SURFACE	V. dangerous	0,0%	0	
	Perfectly rideable	90,0%	18	
	Well rideable	10,0%	2	
	Moderately rideable	0,0%	0	
	Badly rideable	0,0%	0	
	Not rideable	0,0%	0	
GRADIENTS	Cumulative elevation gain [m]		219	
	Cumulative elevation loss [m]		189	
ATTRACTIVENESS	Highest (gain+loss)/km [m]			
	Attractions	20,0%	4	
	Highly attractive area	5,0%	1	
	Noise/ dust/ smell	0,0%	0	
	Crime/ wild dogs	0,0%	0	
	Monotonous	0,0%	0	
SIGNING	National standard	70,0%	14	Partial signposting, route under development
	EuroVelo	0,0%	0	No signs, route under development
	missing/ wrong signs	0,0%	0	



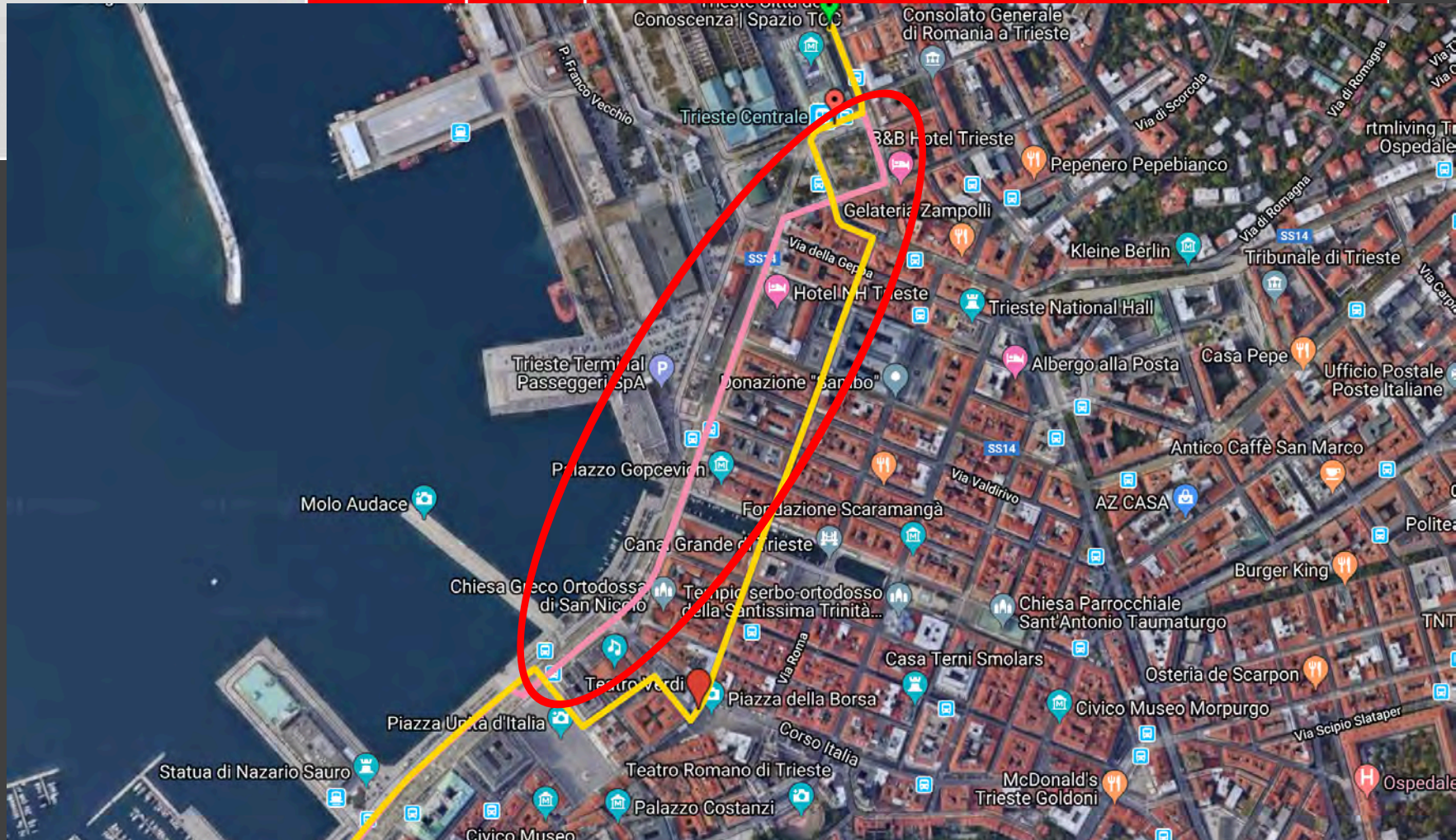
# Tipo di strada, traffico, velocità

High traffic

50,0%

10

Km 0-1 (Trieste, corso Cavour and Riva 3 Novembre); km 7 (Trieste,



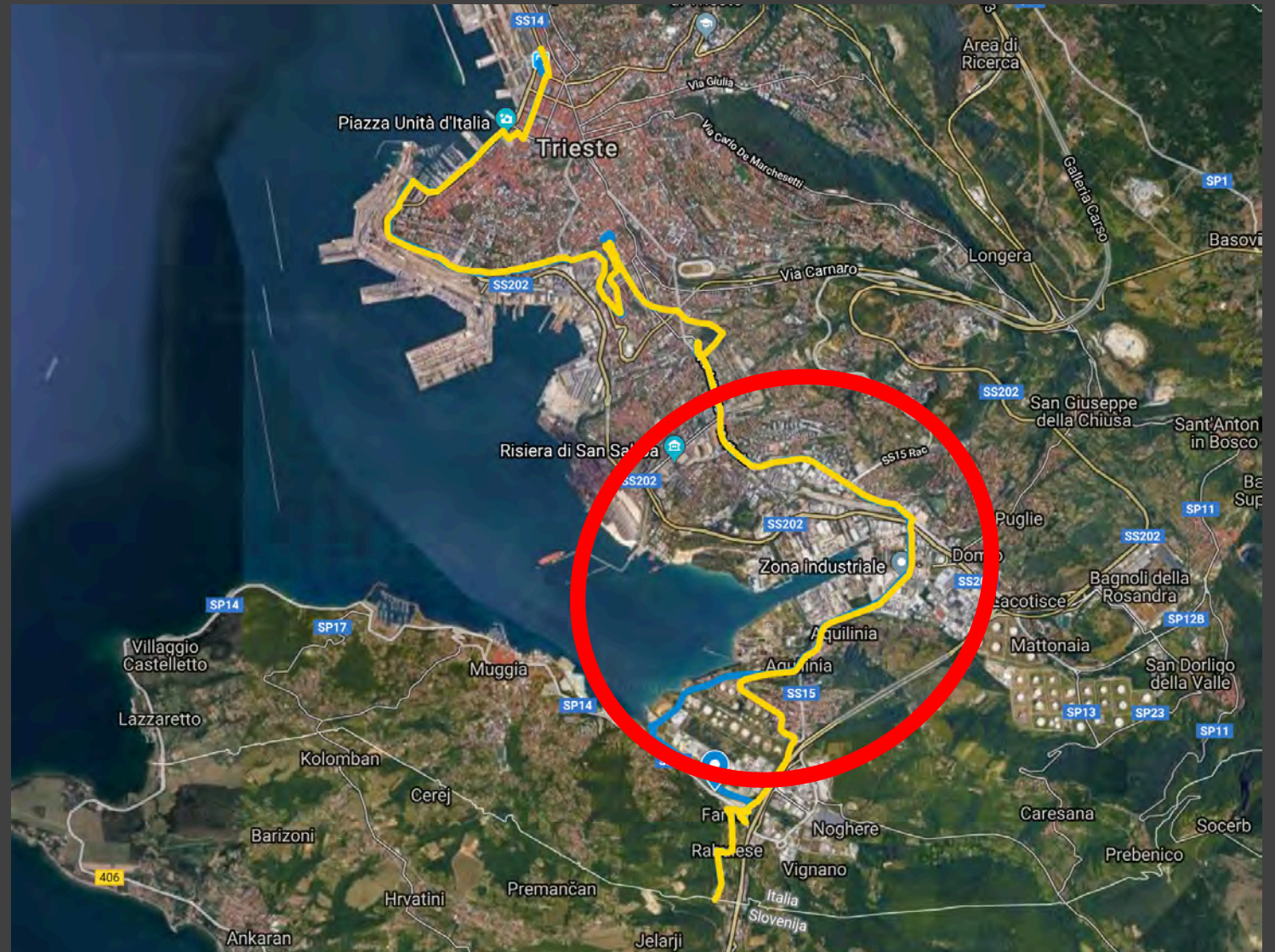
# Tipo di strada, traffico, velocità

High traffic	50,0%	10	Km 0-1 (Trieste, corso Cavour and Riva 3 Novembre); km 7 (Trieste, via G.Orlandini); km 10-16 (Trieste, via dell'Istria, via Flavia or SS15, SP14)
--------------	-------	----	--



# Tipo di strada, traffico, velocità

Km 0-1 (Trieste, corso Cavour and Riva 3 Novembre); km 7 (Trieste, via G.Orlandini); km 10-16 (Trieste, via dell'Istria, via Flavia or SS15, SP14)



# Segnaletica direzionale con logo EV

SIGNING	National standard	22,1%	15	Partial signposting, route under development
	EuroVelo	0,0%	0	No signs, route under development







































**Grazie per l'attenzione!**

Giulia Cortesi

[giulia.cortesi@gmail.com](mailto:giulia.cortesi@gmail.com)

+39 348 0490150