

DELIVERABLE D.T4.2.2

Setting up of emergency plans for the target
heritage sites - Poland

06 2020

Authors:

Beata Białka

Marek Rączka

Aleksander Radkowski

=



CONTENT

I. DESCRIPTIVE PART	2
I.1 General information	2
I.2. Site description and hazard analysis	2
I. 3. List of historic buildings with instructions for their protection	3
I. 4. Materials and equipment necessary for protection	6
I. 5. List of the evacuation / protection order	6
I. 6. List of rescue units, institutions and organizations that are intended to provide assistance	6
I. 7. Diagram of the alarm / notification system	7
I. 8. Operational Instructions	7
I. 9. Organization of exercises and training in the field of cultural heritage protection.	8
II. GRAPHIC PART	9
II.1 Organizational Map	9

I. DESCRIPTIVE PART

I.1 General information

Plan name: Evacuation plan for Church of the Exaltation of the Holy Cross in Stara Wies in case of heavy rainfall.

Plan area: for the object.

I.2. Site description and hazard analysis

The historic church of the Exaltation of the Holy Cross is located in the Silesian Voivodeship, in the Bielsko District, in the Wilamowice commune, in the village of Stara Wies. The church dates from 1522 and is entirely made of wood. It is a high tower building - 30 m, nave - 20 m. It has 1 above-ground floor and 2 emergency exits. The church building meets the technical requirements of evacuation in the light of applicable legal regulations. All installations are regularly maintained and serviced.

The church is located on a slope surrounded by an old stand - natural monuments. Nearby there is a historic cemetery and an old school building from 1787.

Above the church there are arable fields. The road leading over the church to the presbytery is very narrow and steep, there is little possibility of turning large vehicles back. In connection with the above, access to the facility enabling the use of fire brigade equipment is inconvenient and may pose serious difficulties during rescue and firefighting operations.

Due to the location on the slope and the location in the vicinity of the old stand, the church is most exposed to the negative effects of heavy rainfall and strong wind. During heavy rainfall, rainwater, which is no longer absorbed into the soil in the arable fields above the church, creates an artificial river on the road between the fields and flows down towards the church creating the danger of getting inside. Additionally, due to strong winds, the trees around the church may be inflicted and cause serious damage to the building.



I. 3. List of historic buildings with instructions for their protection

Immovable monuments:

No.	Characteristics of the historic object: - name - location / address - short description with the specification of the most valuable elements	Proposed method of protection	Necessary forces: 1. Number of people: what services, volunteers, who else? 2. Equipment: belonging to whom / stored where?	Estimated time needed for protection
1	Church of the Exaltation of the Holy Cross in Stara Wies Address: Stara Wies, str. Ks. Wojtyłki 3, 43-300 Wilamowice A wooden church with an architectural shape and preserved Gothic style Surrounded by soboty (low arcades), where we may find Stations of the Cross. The church's decorations are: - Renaissance polychrome of ceilings; - Baroque wall polychromy with numerous paintings; - Wooden, richly decorated, baroque altars from the 14th and 15th century with paintings; - Wooden, baroque pulpit and baptismal font, eleven-voice Rococo organ with a beautiful sound; - A historic confessional. In the church tower, a St. John bell was hung that dates to 1748. In the 17th century.	Spreading the flood protection sleeves over the church building that will divert water from the fields in a different direction;	1. Volunteer Fire Brigade in Stara Wieś - 12 people; 2. Flood protection sleeves are included in the unit's equipment.	20 min.
		Arranging sandbags in hard-to-reach places where it is not possible to protect them with flood sleeves;	1. Teams of volunteer fire brigades from the area of the Wilamowice commune or the State Fire Service in Bielsko-Biala (depending on the situation) - 12 people or more;	30 min
		In the event of water entering the interior of the church, rescue operations involving pumping out water.	2. Sacks, sand, pumps and other equipment are in the equipment of fire brigades and in the Commune Flood Warehouse.	-

Movable monuments:

No.	Artifact characteristics:			Monument protection: 1. Proposed method of protection 2. Quantity and type of packaging	Necessary forces: 1. Number of people: what services, volunteers, who? 2. Equipment: belonging to whom / stored where? 3. Transport to a safe place/storage - how ?	Estimated time needed for protection	A safe place to which artifacts will be evacuated
	Name / type	Quantity (nsc)	Weight (kg)				
1	Carved arcade	1	200	1. In the event of a crisis, movable monuments will be secured with tarpaulins, foil, sandbags. At the same time, measures will be taken to prevent water from entering the interior of the church and pumping it out.	1. - Teams of volunteer fire brigades from the area of the Wilamowice commune or the State Fire Service in Bielsko-Biala (depending on the situation) - 12 people or more; - members of the Parish Council - 5 people; 2. Sacks, sand, tarpaulins, pumps and other equipment are in the equipment of fire brigades and in the Commune Flood Warehouse. 3. Monuments due to their size and weight are to be protected on site.	60 - 120 min	-
2	Ogival portals	2	350				
3	Main altar	1	1000				
4	Right side altar	1	500				
5	Left side altar	1	500				
6	Pilpit	1	200				
7	Baptismal font	1	50				
8	Church Organs	1	500				
9	Sculptures	12	108				
10	Marble board	1	5				
11	Bell	1	500				
12	Confessionals	2	300	1. Secured in a wooden crate and moved to a safe place 2. Wooden crates - 2 pcs.	1. - Teams of volunteer fire brigades from the area of the Wilamowice commune or the State Fire Service in Bielsko-Biala (depending on the situation) - 12 people or more; - members of the Parish Council - 5 people; 2. Wooden crates are provided by the Rectory and in the Commune Flood Storage.	60 min	Presbytery / Commune Office in Wilamowice
13	Late baroque wardrobe	1	30	1. Secured in a wooden crate and moved to a safe place 2. Wooden crates - 1 item		30 min	
14	Procession float	4	60	1. Secured in a wooden crate and moved to a safe place 2. Wooden crates - 2 pcs.		30 min	
15	Paintings	3	15	1. Secured in a wooden crate and moved to a safe place 2. Wooden crates - 1 pc.		30 min	

16	Crucifix	1	5	1. Secured in a wooden crate and moved to a safe place 2. Wooden crates - 1pc.	3. In the event of evacuation of movable monuments to the presbytery, due to the short distance from the church, they will be moved by firemen manually. If it is necessary to evacuate the property to the Commune Office in Wilamowice, the monuments will be transported using a tarpaulin trailer provided by the Volunteer Fire Brigade in Stara Wies.	15 min	
17	Crosses	2	3	1. Secured in a wooden crate and moved to a safe place 2. Wooden crates - 1pc.		15 min	
18	Monstrance	1	2,5	1. Secured in a wooden crate and moved to a safe place 2. Wooden crates - 1pc.		15 min	
19	Reliquaries	2	1,5	1. Secured in a wooden crate and moved to a safe place 2. Wooden crates - 1pc.		15 min	
20	Candelabrum	2	3	1. Secured in a wooden crate and moved to a safe place 2. Wooden crates - 1pc.		15 min	
21	Velvet cover	1	6	1. Secured in a wooden crate and moved to a safe place 2. Wooden crates - 1pc.		15 min	

I. 4. Materials and equipment necessary for protection

No.	Materials / equipment for protection	Quantity	Place of storage	The person responsible for dispensing equipment / materials- phone number
1	Flood sleeve	3 pcs.	The building of the Volunteer Fire Brigade in Stara Wies	The emergency unit is alerted by the State Fire Service in Bielsko-Biala - tel. 998 or 112
2	Sacks	1000 pcs.	1.The building of the Volunteer Fire Brigade in Stara Wies 2. Municipal Flood Protection Warehouse in Wilamowice	1. The emergency unit is alerted by the the State Fire Service in Bielsko-Biala - tel. 998 or 112 2. Employee of the Commune Office in Wilamowice tel. 501-136-010
3	Sand	20 tons		
4	Tarpaulin	25 pcs.		
5	Protective foil/plastic	400 m ²		
6	Wooden crates	8 pcs.	Presbytery next to the church	Parish priest or members of the Parish Council

I. 5. List of the evacuation / protection order

Analyzing the existing danger caused by heavy rainfall, the first step in the actions of rescuers will be to protect the historic church building using flood sleeves and sandbags. With the help of these safeguards, it should be possible to stop the water before entering the church interior or significantly reduce it. Thanks to these activities, there should be no need to evacuate movable relics from the church.

In the event of water entering the church, the rescuers will be divided into two teams. One team will deal with the protection of monuments that are not intended for evacuation due to their size and weight, while the other team will deal with the protection of movable monuments and preparing them for evacuation. First, liturgical objects will be protected.

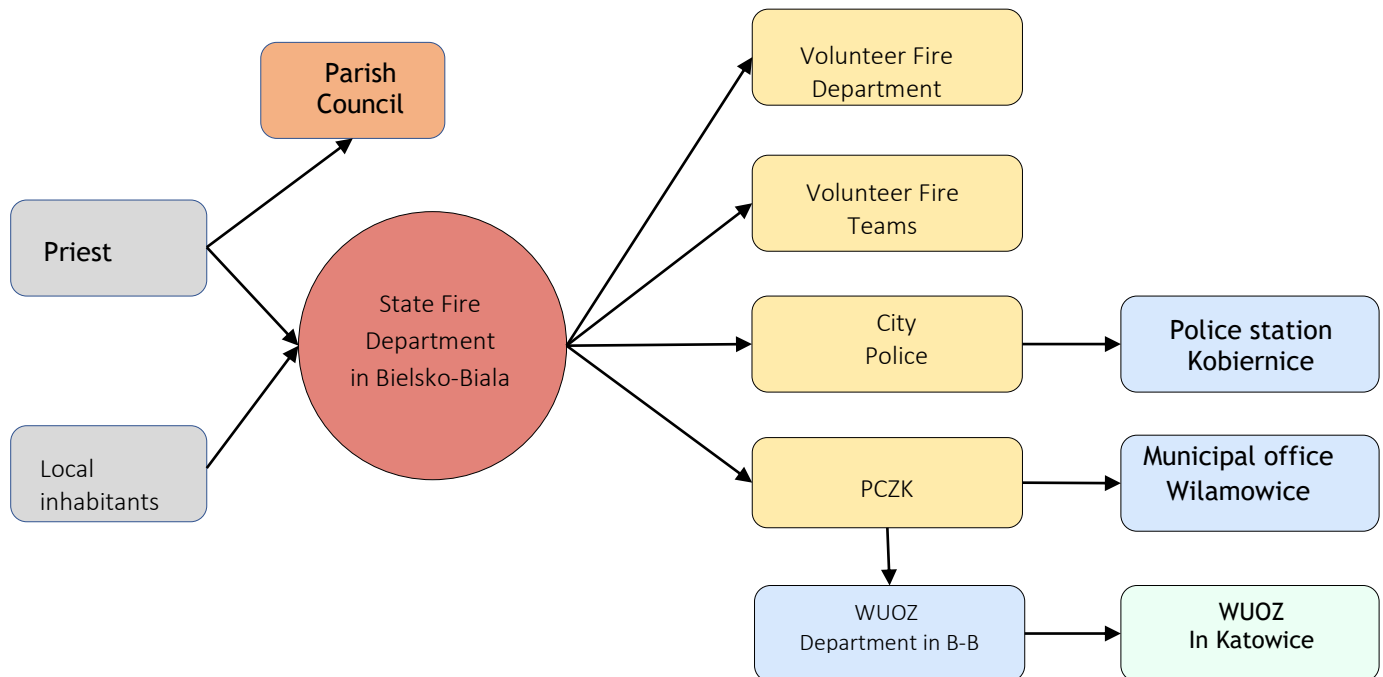
Due to the small number of movable monuments and their arrangement in one room constituting the interior of the church, there is no need to determine the detailed order of evacuation of monuments. In addition, due to the small room inside the church and the involvement of members of the Parish Council to protect the monuments, there is no need to draw up a map of escape routes.

I. 6. List of rescue units, institutions and organizations that are intended to provide assistance

No.	Name of institution / organization / association	Address	Telephon	More info
1	City Headquarters of the State Fire Service in Bielsko-Biala	Bielsko-Biala str. Leszczyńska 43	998 / 112 (33) 822 83 10	Entities alarmed / informed through the State Fire Department Management Office in Bielsko-Biala
2	Volunteer Fire Department Stara Wieś	Stara Wieś str. Dolna 8a	(33) 845 71 60	
3	Volunteer Fire Department Wilamowice	Wilamowice str. Jana III Sobieskiego 4	(33) 845 71 80	
4	Volunteer Fire Department Pisarzowice	Pisarzowice str. Św. Floriana 24	(33) 845 74 66	
5	Volunteer Fire Department Dankowice	Dankowice str. Św. Wojciecha 8	(33) 845 74 35	

6	Volunteer Fire Department Hecznarowice	Hecznarowice str. Krakowska 99	(33) 845 71 90	tel. 998/112
7	District Crisis Management Center in Bielsko-Biala (PCZK)	Bielsko-Biala str. Piastowska 40	668 873 333	
8	City Police Headquarters in Bielsko - Biala	Bielsko-Biala str. Wapienna 45	997 (47) 857 12 00	
9	Police station in Kobiernice	Kobiernice str. Żywiecka 6	(33) 817 52 12	Entity informed by the Municipal Police Headquarters in B-B
10	Voivodeship Office for the Protection of Monuments in Katowice (WUOZ)	Katowice str. Francuska 12	(32) 253 77 98	Entity informed by PCZK
11	Voivodeship Office for the Protection of Monuments in Katowice, District Bielsko-Biala (WUOZ)	Bielsko-Biala str. Powstańców Śląskich 6	(33) 812 37 74	
12	Municipal office in Wilamowice	Wilamowice str. Rynek 1	(33) 812 94 30	
13	Parish Council Exaltation of the Holy Cross parish in Stara Wies.	Stara Wieś str. ks. Wojtyłki 3	(33) 845 72 04	Entity informed by priest
14	Presbyteryd	Stara Wieś str. ks. Wojtyłki 3	(33) 845 72 04	

I. 7. Diagram of the alarm / notification system



I. 8. Operational Instructions

In the event of a crisis related to heavy rainfall, people who are at the scene of the incident - the Priest or local residents inform the State Fire Department in Bielsko-Biala about the danger. In addition, the Priest informs about the incident members of the Parish Council who may be needed in the event of a decision on the evacuation of movable monuments.

Depending on the magnitude of the danger and the intelligence collected, the PSP Command Post sends the nearest volunteer fire brigades, if necessary, the State Fire Service and the Police to the scene. In addition, the Management Position notifies the District Crisis Management Center (PCZK). PCZK notifies the Mayor of Wilamowice commune and representatives of the Provincial Office for the Protection of Monuments in Katowice District Bielsko-Biala, who inform the employees of the District Office for the Protection of Monuments in Katowice.

Upon arrival at the scene of the first fire brigade and reconnaissance, the Manager of the Rescue Operation decides whether the available forces and means are sufficient to eliminate the threat or if more units should be activated.

In the event of a decision to evacuate movable relics from inside the church, members of the Parish Council together with the Priest prepare crates with protective materials and necessary documentation. If they are insufficient, the materials are delivered from the Commune Flood Warehouse in Wilamowice. Firefighters simultaneously carry out activities to protect the church against water penetration and help members of the Parish Council to protect monuments and evacuate them to a safe place. If the interior of the church is classified as a dangerous place, it is necessary to designate a safe place outside where firefighters will carry movable monuments and members of the Parish Council will be able to safely perform their duties.

Historic property will be evacuated to the presbytery located above the church or to the Commune Office in Wilamowice. The choice of a safe place must be based on an analysis of the danger and its further development.

I. 9. Organization of exercises and training in the field of cultural heritage protection.

The organization of evacuation exercises from the church of the Exaltation of the Holy Cross in Stara Wies should take place at least once every two years. Exercises are designed to teach rescuers how to react correctly in crisis situations. A detailed scenario must be prepared for practical exercises each time.

The tasks of the Rescue Operations Manager during the exercises include in particular:

- determine the type and extent of threats occurring,
- determine the number of people at risk and the number of forces and means necessary to take effective action in case of a decision to evacuate
- determine the amount of endangered historic property and the amount of forces and means necessary to take effective action in case of a decision to evacuate

- notify endangered persons of the incident,
- take measures to prevent water from getting inside the church,
- manage and coordinate the evacuation of people and historic property, with particular emphasis on disabled people and victims.

During exercise, proceed as you would for the real situation:

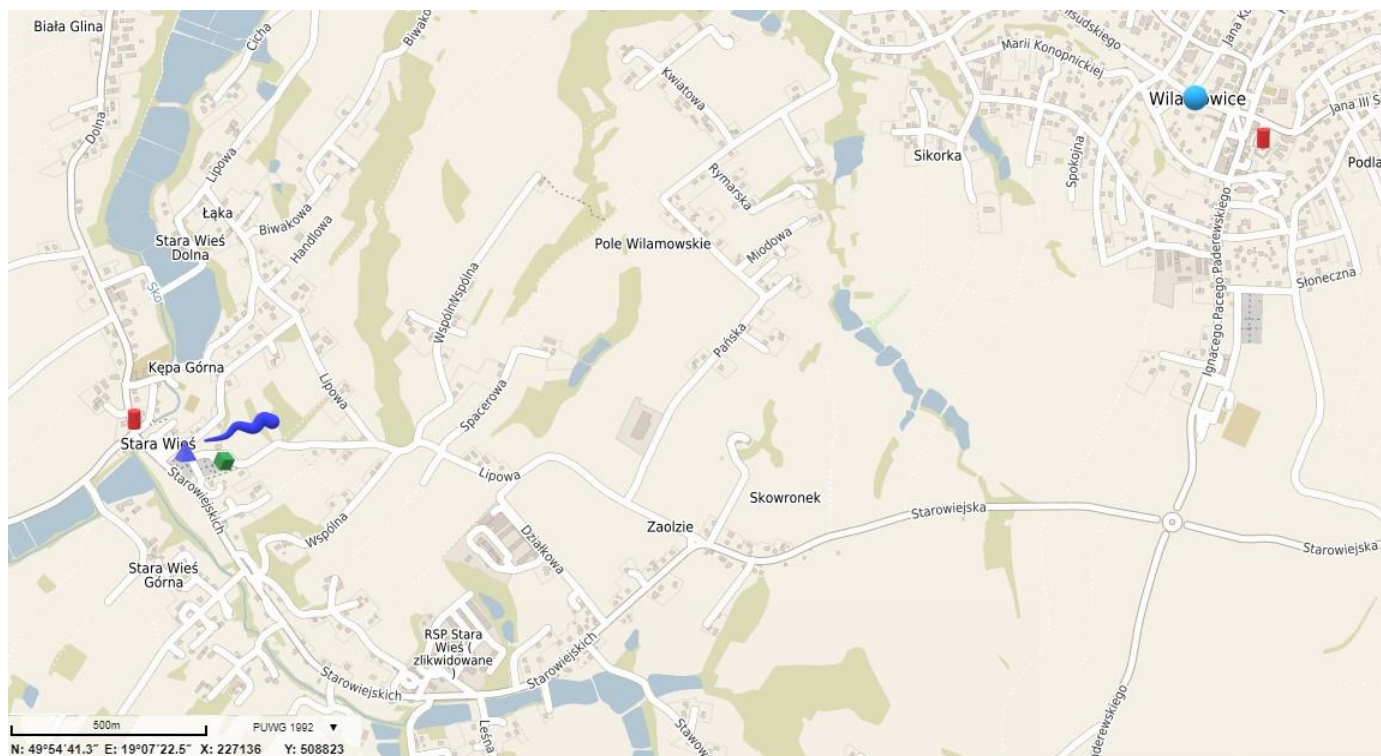
- all victims should be provided with first-aid and medical care,
- all evacuated historic items should be stored in one safe place and provided with proper protection,
- evacuation personnel should be provided with maximum safety.

II. GRAPHIC PART

II.1 Organizational Map

A map including:

- immovable monuments,
- places with movable monuments,
- headquarters / location of rescue units and/or organizations,
- potential threats that can be shown on the map, e.g. rivers, landslides.



- ▲ Church of the Exaltation of the Holy Cross in Stara Wies
- Volunteer fire brigade units
- Headquarters of the parish council
- Commune office in Wilamowice
- ~ Artificial river formed on the road between fields due to heavy rainfall