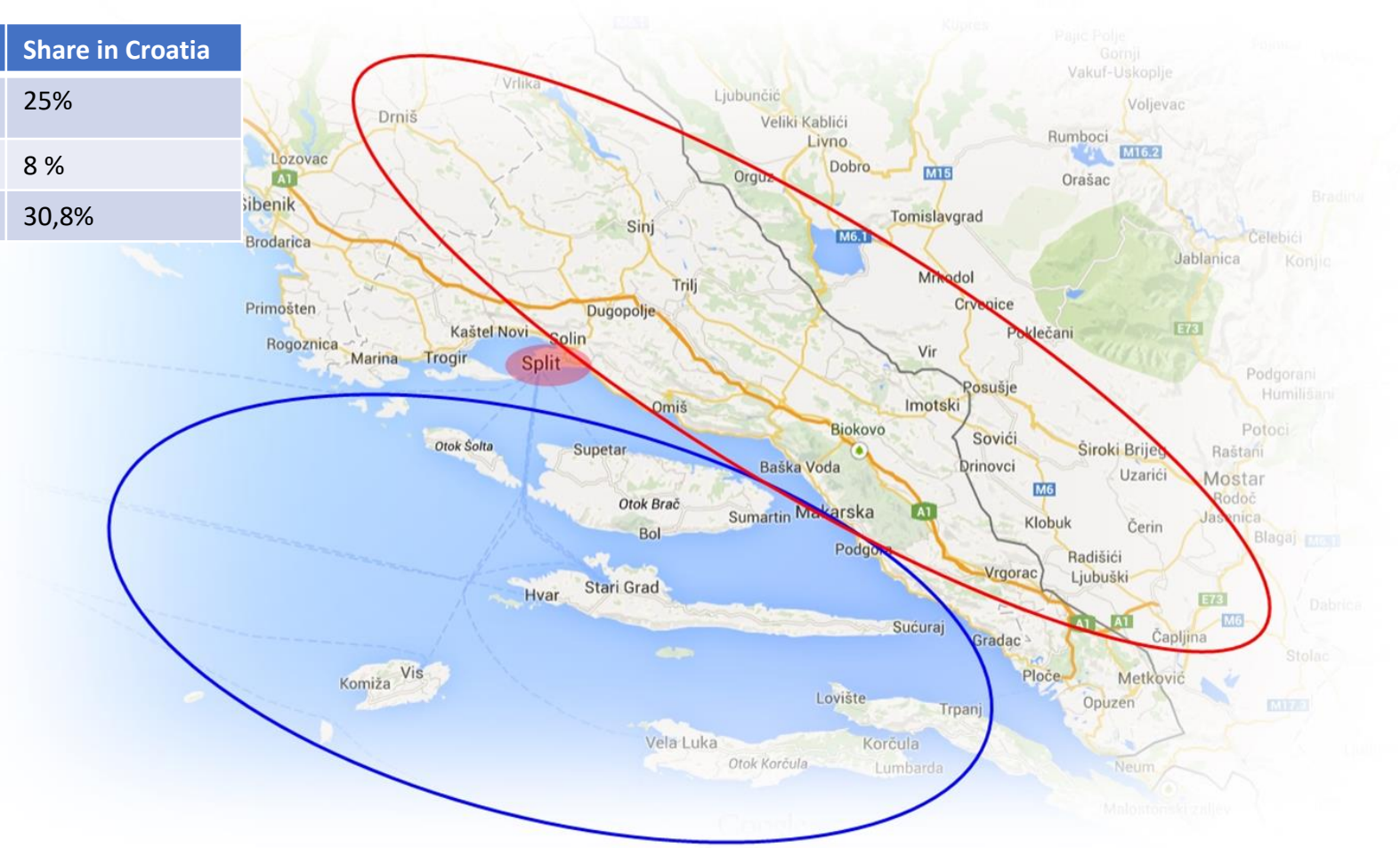


PROSPECT2030 - Workshop for replicant partners: PROSPECT2030 PPL Electrification of the transport sector in Split-Dalmatia County
SPLIT, 06.07.2021. – Martin Bućan



SDC activities in sustainable transport

Geographical information		Share in Croatia
Total territory	14.106,40 km ²	25%
Land area	4.523,64 km ²	8 %
Territorial sea	9.576,40 km ²	30,8%



Population (2011)		
Total	454,798	100,00
Split	175,140	39,0
Share in RC		11,0

Territorial structure	
Cities	16
Municipalities	39
Center of the county	SPLIT

Geographical subunits	
hinterland	59,88%
coastal area	21,12%
islands	19%



Project INTERMODAL

- An integral part of the EU project IPA Adriatic INTERMODAL: pilot - promotional activities
- General goal: promotion of intermodality in the area of Split-Dalmatia County, through the creation of a pilot network of intermodal hubs.
- Specific objective: promotion of potential intermodal hubs, through interactive promotion of electric charging stations, as elements of the infrastructure foundation for the reception of the main elements of intermodality, such as car sharing systems of electric vehicles
- Project duration: 7/20/2015 - 1.3.2016.
- Status: implemented





Project INTERMODAL

- Pilot activities are carried out through:

- ❑ ***Program of islands connection***

- ❑ ***Application for analytical monitoring of movement of tourists in the County***

- ❑ ***The application for the County Public bus lines***

- Based on a database of the county public bus lines interactive public access to
- information will be enable through the module on the web site www.dalmacija.hr:
 - - Register of the permits issued (data on lines and the carrier)
 - - Timetable
 - Interactive map of the county bus lines (graphical display).

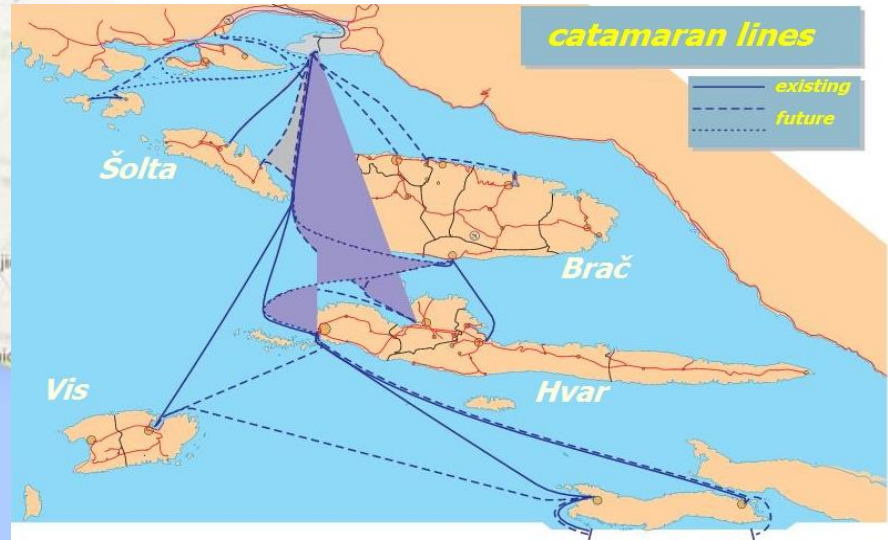
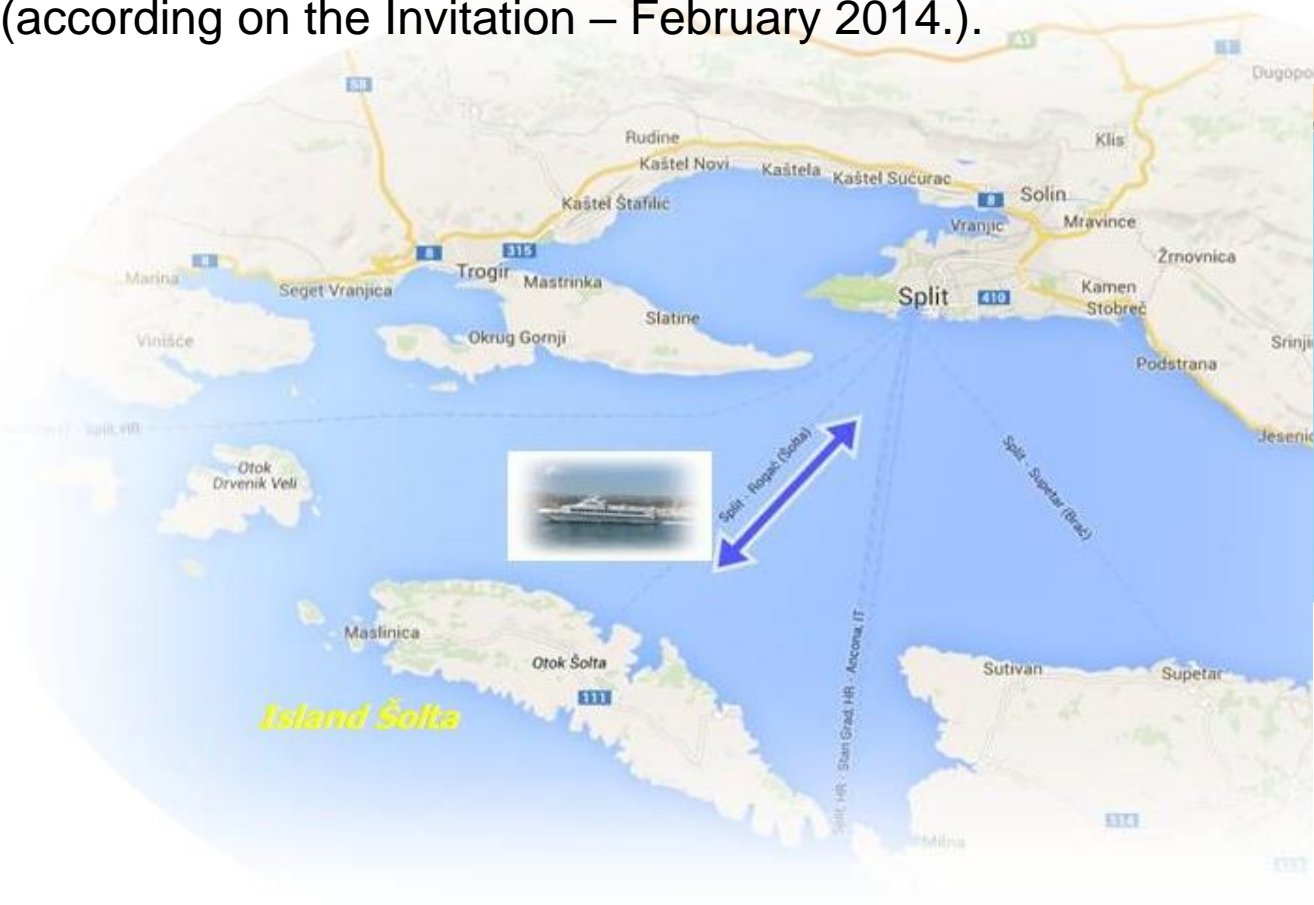
- ❑ ***Program of co financing the transport costs of students and school pupils***

- ***in the hinterland part of the Split-Dalmatia County***

PILOT ACTIVITIES - Program of islands connection



- with the mainland and between the islands themselves - based on a program County co-funded increased frequency. Namely, County co-financed additional fast line on relation Split-Šolta-Split (according on the Invitation – February 2014.).



PILOT ACTIVITIES - *analytical monitoring of movement of tourists in the County*



SPLIT-DALMATIA COUNTY WANTED TO HAVE DETAILED TRAFFIC DATA TO IMPROVE CONNECTIONS

The Split-Dalmatia County wanted to have a detailed analysis of traffic flows between different parts of the County to use this as a basis to improve traffic connections (bus lines, connections between islands, boat/ferry and bus scheduling etc.)

The following information/indicators will be provide:

- The aggregate number of people in certain time intervals passes by the defined location (Cites: Split, Vrgorac, Imotski, Sinj, Trilj and Vrlika Islands: Hvar and Brač)
- Socio-demographic characteristics of the group (tourists, local residents),
- Direction of movement, "footfall" statistics,

all with the aim of defining a flexible and efficient public transport (car shearing, bus on demand, ...) adjusted to the needs of tourists and the local population.

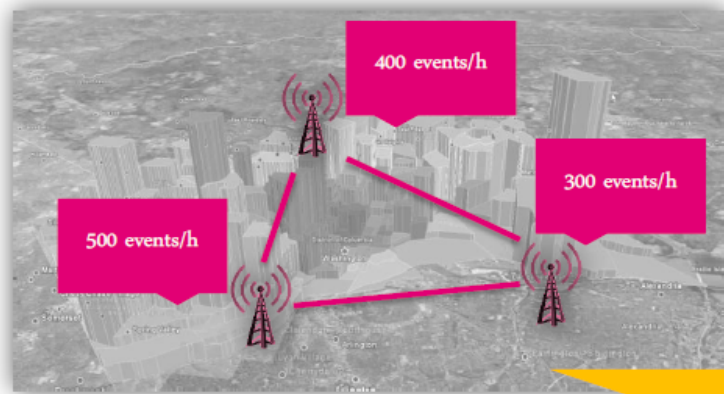
Furthermore, for a period of additional two years by the user web interface will be given access to all the indicators/data.

PILOT ACTIVITI - analytical monitoring of movement of tourists in the County



HEATMAPS

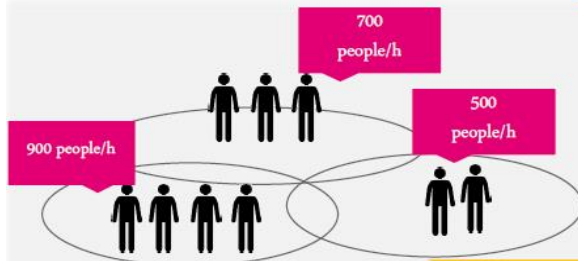
ENHANCES UNDERSTANDING OF CUSTOMER BEHAVIOUR



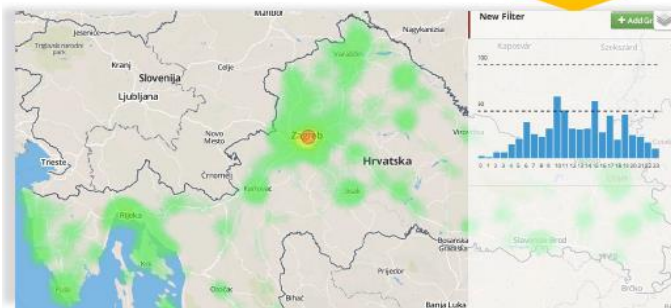
Generating insights about locations data (knowing which groups pass by specific POIs)...

BENEFITS 4 PARTNER (Business Client)

- 2 mio HT mobile subscribers scaled-up to national level
- Customer socio-demographics segmentation
- Analytics of people movement and demographic indicators
- Adjustable analytical dashboard



...but using it anonymized and aggregated...



...helps us to understand movement patterns of targeted group of people



Development of the initial network of E - chargers 5 locations for project implementation were selected: ZLS, Hotel Park, CITY cener one split, Hotel Cornaro and Aparthotel miramare based on heat maps analysis



Puni.hr

Mapa punionica | Uporaba punionica | Pružatelji usluga | Pitanja i odgovori (FAQ) | Kontakt

TRAŽI MOBILNO POMOĆ

Općenito pretraživanje:
Prikaži samo slobodna mjesta za punjenje:
Način punjenja:
Sporo punjenje
Brzo punjenje
Ultra brzo punjenje
Pružatelj usluga: Svi pružatelji usluga
Prikaži dijeljeno mjesto za punjenje
Odaberite tip identifikacije:

Način plaćanja: Sve vrste plaćanja
Dostupno za: Bez obzira na tip dost
Vrsta utičnice: Sve vrste
Sakrij pretraživač
Tvorničko pretraživanje

Mogućnosti karte
Vrsta karte:
 Prikaz ulica
 Satelitski pregled
Grupiranje punionica:
 Grupni pogled
 Pojedinačan pogled

LEGENDA
Slobodno
Punjenje u tijeku
Rezervirano
Van pogona
Nepoznato
Djeljeno mjesto za punjenje
Utičnica rezervirana za kampere

OD VAŠIH 0 OMILJENIH PUNIONICA SU TRENUTNO SLOBODNE

+ DODAJ PUNIONICU | ZAHTJEV ZA PUNIONICU

Uvjeti korištenja | O nama

5 chargers (ZLS, Hotel Park, Hotel Cornaro, Aparthotel miramare, CITY cener one split), srpanj 2015



SPLIT — SINCE 1921
HOTEL PARK
Be a Part of the Story.



CITY City Center one Split
22 min · 48

Potražite samostojeće punionice na prizemlju garaže, a ovisno o tipu vozila i istrošenosti baterije vaš električni automobil će ponovno biti spreman za vožnju za svega sat do dva vremena. — na lokaciji City Center one Split.

Sviđa mi se · Komentiraj · Podijeli

Komentiraj...

Predložene grupe Vidi sve

- Gsx 1400 Streetfighters & Modified
576 članova
- Glazbena Oprema (kupnja/prodaja/zamjena)
Tomislav Tomy Horvatic se pridružuje.

Ljudi koje možda poznajete Prikaži sve

- Kruno Pišta Piškorić
Jedan zajednički prijatelj
Dodaj kao prijatelja
- Jelika Erseg
Dodaj kao prijatelja

© city center one



Charging stations are included in the e-roaming platform and visibility in the international market is ensured, as well as active promotion



- The roaming platform is the ultimate solution for the end user, and through it the user is allowed to use the infrastructure, regardless of the selected service provider.
- Through the existing roaming platform available on the portal www.puni.hr, it is already possible today to view all publicly available filling stations in Croatia and Slovenia, as well as partial access.

Puni.hr

Mapa punionica | Uporaba punionica | Pružatelji usluga | Pitanja i odgovori (FAQ) | Kontakt

TRAŽI MOBILNO POMOĆ

Općenito pretraživanje: [input]
Prikaži samo slobodna mjesta za punjenje: [checkbox]
Način punjenja:
Sporo punjenje [checked]
Brzo punjenje [checked]
Ultra brzo punjenje [checked]
Pružatelj usluga: Svi pružatelji usluga
Prikaži dijeljeno mjesto za punjenje [checked]
Odaberite tip identifikacije:
[checked] [checked] [checked] [checked] [checked] [checked]
Način plaćanja: Sve vrste plaćanja
Dostupno za: Bez obzira na tip dost
Vrsta utičnice: Sve vrste
Sakrij pretraživač
Tvorničko pretraživanje

Mogućnosti karte
Vrsta karte:
Prikaz ulica
Satelitski pregled
Grupiranje punionica:
Grupni pogled
Pojedinačan pogled

LEGENDA
Slobodno
Punjenje u tijeku
Rezervirano
Van pogona
Nepoznato
Djeljenje mjesta za punjenje
Utičnica rezervirana za kampere

OD VAŠIH 0 OMILJENIH PUNIONICA SU TRENUTNO SLOBODNE

+ DODAJ PUNIONICU | ZAHTJEV ZA PUNIONICU

Uvjeti korištenja | O nama



STEP UP PROJEKT –
PILOT INTEGRATION BETWEEN DIFFERENT INFO-MOBILE
SERVICES

STEP-UP | SDŽ | Martin Bućan

General objectives of the project :

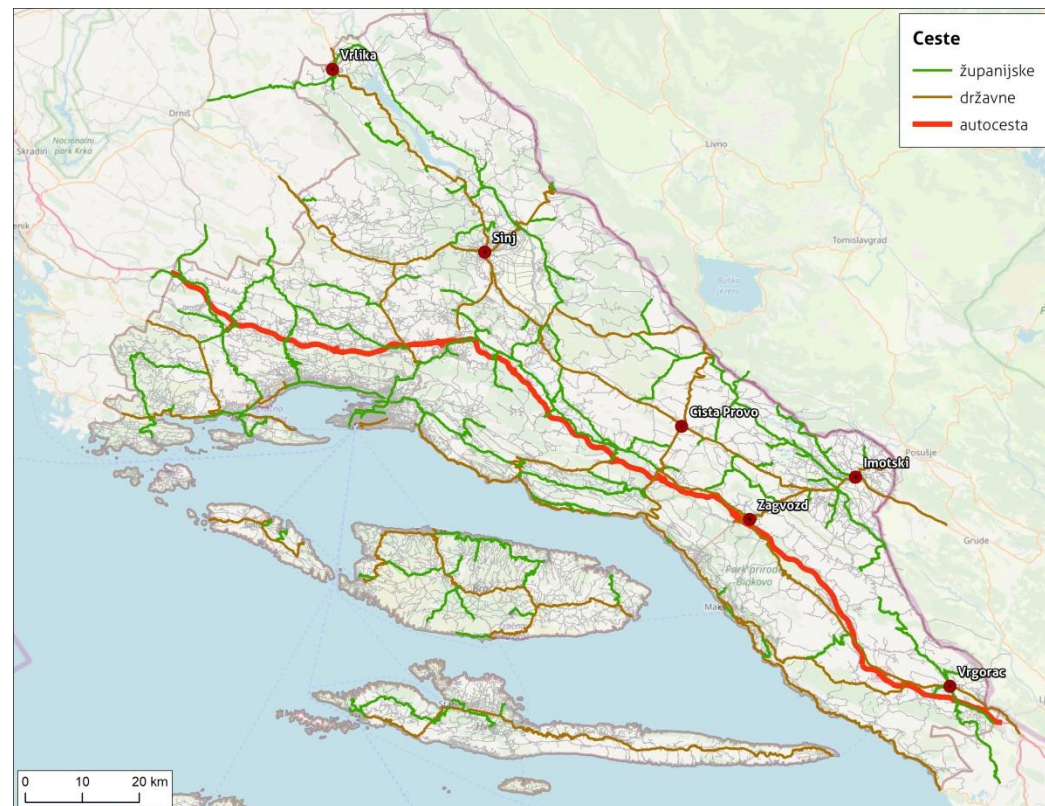
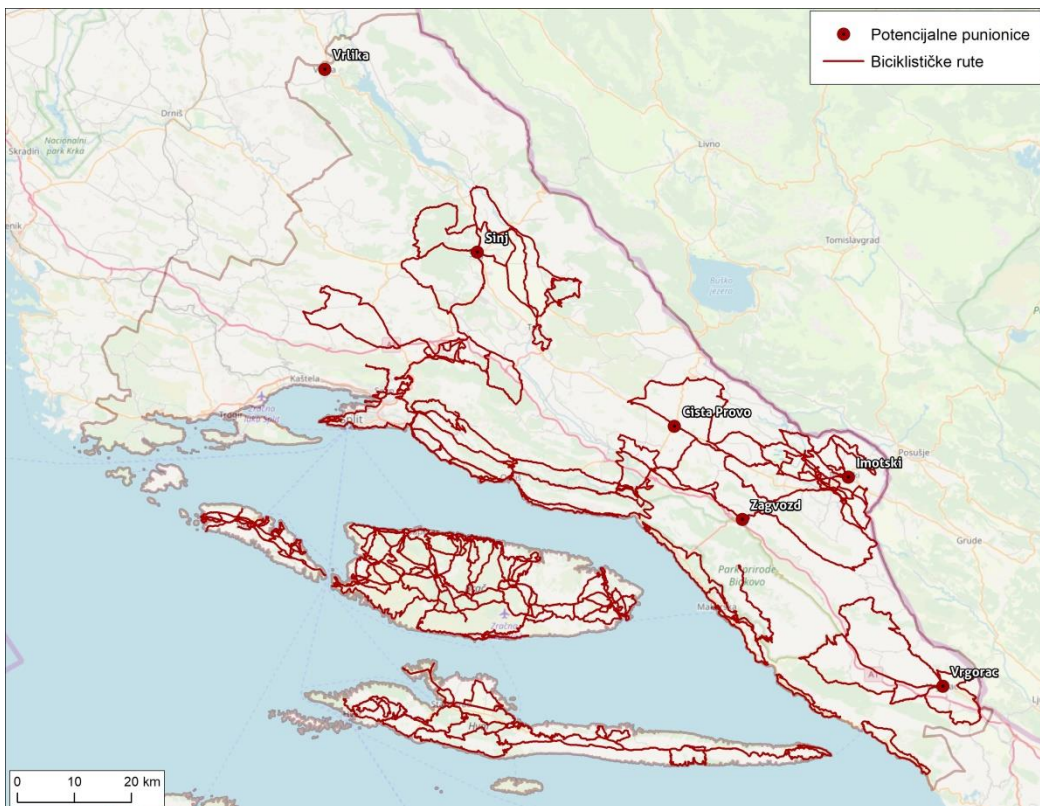


1. Promotion of multimodal passenger mobility;
2. Facilitated access to offered services;
3. Combining aspects of transport and tourism in a global context;
4. Capitalization of INTERMODAL project efforts and results.

Activities

In the area of Split-Dalmatia County, there are 10 charging stations for electric vehicles that are spatially concentrated on the coast. The coast of the county does not have a developed infrastructure for charging electric vehicles, which limits the possibilities of using such vehicles for tourists and locals. The development of the necessary infrastructure (installation of filling stations) would establish the initial network necessary for unhindered travel in the hinterland of the county by electric vehicles. This would greatly increase the accessibility of this area to a specific group of tourists. It contributes to the development of sustainable mobility as local people and tourists are encouraged to use alternative forms of transport such as electric vehicles. This reduces dependence on fossil fuel vehicles. The promotion of charging infrastructure for electric vehicles, but also for electric vehicles themselves, raises awareness among locals and tourists about the need to reduce emissions in the transport sector, which is highlighted by the EEA as one of the most important polluters.

Study: Relationship of locations to bicycle routes and traffic network of Split-Dalmatia County





Scope of pilot integration

- Traffic data testing service through the platform with updating of data from traffic sources
- Installation of smart charging stations, equipped with user authorization software
- Integration with the data collection portal from charging stations
- Collection and connection of GTFS data and integration with the platform

The image displays a mobile application interface for FlixBus and a map of the Balkan region. The FlixBus interface shows a search for routes from Split to Cista Provo on Monday, 9th of October. The map shows a network of green charging station icons across the Balkans, including Italy, Croatia, Bosnia and Herzegovina, and Serbia. To the right, a blue electric car is shown plugged into a charging station.

Challenges



- Non-existent infrastructure for setting up filling stations
- Impossibility of obtaining an electrical connection from HEP
- Collection of GTFD data and data in digital format in general
- Integration of POI with the portal / platform (problem in the operation of the BackOffice tool)



The development of e-charger stations and the necessary infrastructure creates the basis for the development of potential intermodality and multimodality through transport by creating preconditions for strengthening the smart and green mobility sector, possible car-sharing and bike-sharing services and reducing emissions from the transport sector.



Other activities

- Master plan of traffic development of FR Central Dalmatia – The purpose of drafting the FRSD Transport Development Master Plan is to establish the existing and future needs of the region that affect traffic demand
- The SUTRA project- Tender project is the introduction of a public bicycle system in the cities of Solin, Trilj, Sinj and the municipality of Klis, at 6 locations. At each location, there will be one info pole with charging equipment and 2 racks for parking electric bicycles and 4 racks for parking classic bicycles, as well as the implementation of a charging station for electric vehicles and boats in the Split-Dalmatia County.

Other activities

- The project "Choose a bicycle!" worth 13.6 million kuna /1,8 continues the establishment and development of public bicycle systems in the urban agglomeration of Split as an alternative form of public transport. Through this project in the area of the agglomeration, 41 new stations with 242 bicycles will be set up and two bicycle roads will be established one in Trogir, and the other in Split "
- Joint_SECAP - The main goal of the project is to increase the knowledge and capacity of local authorities on climate change adaptation, to enable them to more easily integrate climate adaptation measures into existing energy plans and adopt a supra-municipal approach to addressing this issue.

Other activities

- AaCTA- Alpe-Adria Green Transport Alliance - aims to strengthen local and regional authorities and civil society through training to better understand the role of clean transport in the energy transition and provide tools for decarbonisation of transport. The workshop will hear experiences from Austria, Slovenia and Montenegro related to green public procurement in the transport sector and infrastructure planning required for electric and hydrogen vehicles at the local level.
- Member the Fuel Cells and Hydrogen Joint Undertaking (FCH JU)- H2020 SWORDFISH in cooperation with FESB project application - we expect results
- GREENMIND project - a completed project that encourages the development of economic competitiveness and innovation in the green and smart mobility industry, strengthening regional and transnational cooperation between entrepreneurship, research institutions and the public sector.

THANK YOU FOR ATTENTION



✉ Email: martin.bucan@dalmacija.hr

☎ Telefon: 021 400 156