

CO-EVOLVE actions on territories: Pilot Action of Rosolina Mare and Polesine Camerini

Maria Letizia Vitelletti



CO-EVOLVE 3rd Steering Committee Meeting
Valencia, 16-17 November 2017

I. PO DELTA PARK VENETO REGION AUTHORITY

The Po Delta Veneto Region Authority has been established with L.R. n° 36/97 and has the finalities to protect the natural heritage, promote and implement cultural interventions within its competence area.

The Delta Po covers a surface of 78.600 ha where 16.000 ha are valleys and lagoons, the Park Authority has an extension of 12.000 ha and reunites an exceptional range of ecosystems, habitats and species and interests 9 Municipalities: Adria, Ariano nel Polesine, Corbola, Loreo, Papozze, Porto Tolle, Porto Viro, Rosolina, Taglio di Po.

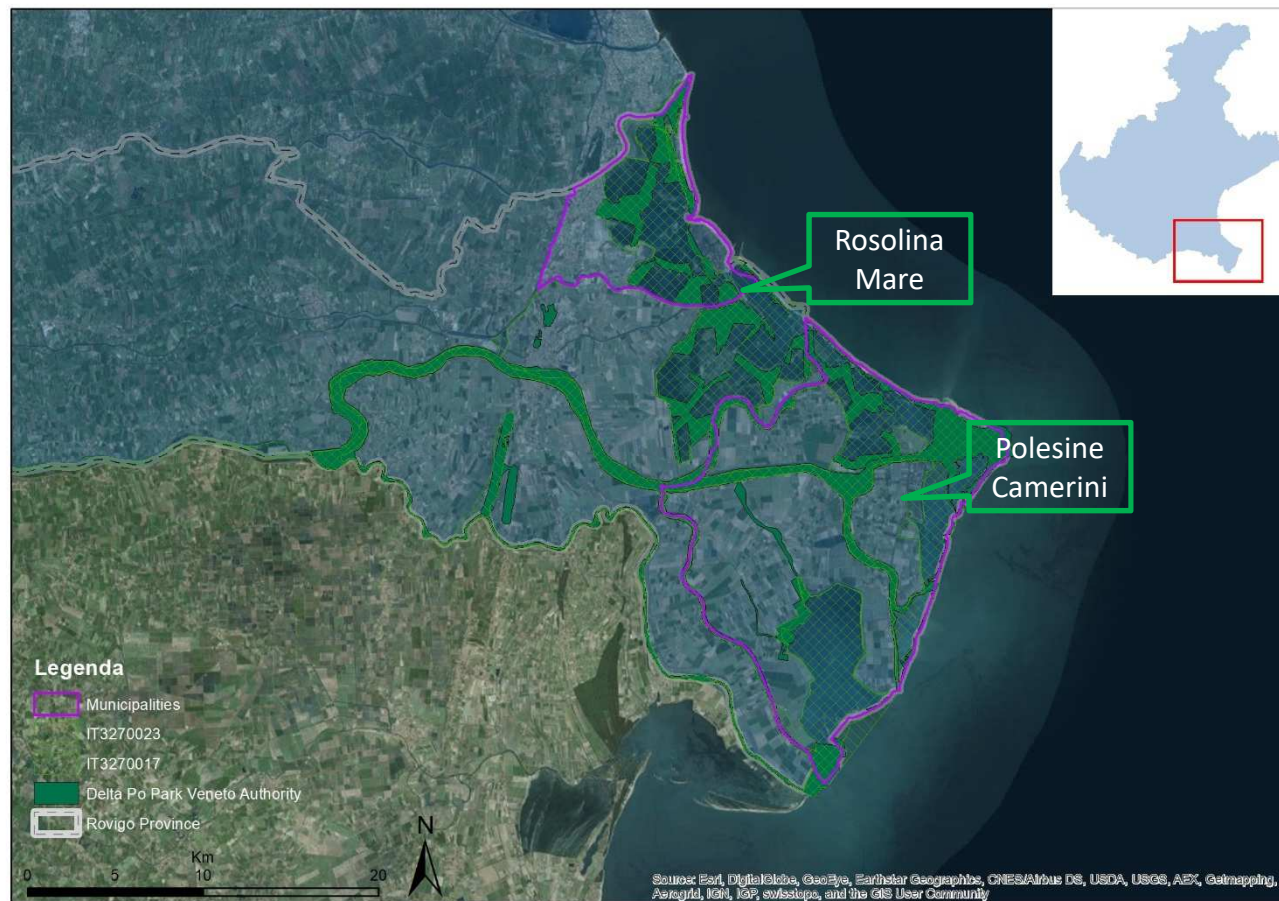
7 Natura 2000 sites are placed in the Park, 2 of them (1 SIC and 1 ZPS) are located in the CO-EVOLVE Pilot Area.



II. Introducing Po Delta Park Veneto Region Pilot Area



II. Introducing Po Delta Park Veneto Region Pilot Area



III. Pilot Area Rosolina Mare 3A



- The PA is an important forest area in the Delta Po with its pine forest. As a matter of fact forested area are quite rare in the Po river delta.
- The PA has become more sensible given the urban sprawl and tourism's demand which has been increased in the last years (4,7% in 2014-2015, 50% are foreigners)



III. Pilot Area Rosolina Mare 3A

Expected results

A prototype for sustainable movable lodging included in a camping will allow to experiment new and innovative solutions to improve the environmental compatibility. It will containing urban sprawl in the protected area and in the meanwhile respond to tourism's demand and ecotourism that affect the coastal zone.

How? The analysis of the impacts produced by all the touristic village, where the prototype will be installed, and the analysis of the single lodging unity and its related surface area could give back a reference about a possible kind of accomodation unity to suggest for the for coming expansions of the villages located in the touristic destination.

Deliverable 4.5.2 - Prototype of movable lodging: to verify its environmental compatibility inside a SIC/ZPS area of coastal pine forest

Deliverable 4.5.3 - Workshop with stakeholders



III. Pilot Area Rosolina Mare 3A

Co-Evolve Working Group

- Po Delta Park Veneto Authority
- Municipality of Rosolina
- Vittoria Camping
- Rosapineta sud Camping
- Rosapineta nord Camping
- Tour Operators Consortium “Po e suo Delta”



IV. Pilot Area Polesine Camerini 3B



- The PA is a natural area composed mostly by wetlands. Ecotourism, fishing and agriculture are the main drivers for the local economy
- Other threats are the possibility of navigation inside the lagoons
- The presence of a no longer working industrial plant could be an opportunity. As a matter of fact the reconversion of the structure to ecotourism activities would respond to the local economy avoiding land transformation



IV. Pilot Area Polesine Camerini 3B

Expected results

The PA is threaten by numerous factors (e.g. subsidence, flooding, etc..), a correct management of the area with conservation aims is a priority.

A requalification of the area (by trasforming the ENEL power station) with the purpose of making it an operative structure for ecotourism and observatory.

The site hosting the power station is object of a reconversion project for touristic - accomodation purpose. The project which will be presented will be analyzed considering the CO-EVOLVE references for sustainable and including the new accomodation building in the whole analysis, both touristic and environmental, of the Polesine Camerini territory. It will be possible to use some spaces inside the power station or other next buildings, with the purpose to create a technical observative center for the whole Po Delta.



Expected results

Deliverable 4.5.1 - Planning centre: launching and running of an Observatory for tourism, studying, area's database for Delta Po Planning and Coastal Plan of Veneto Region.

Deliverable 4.5.3 - Workshop with stakeholders



IV. Pilot Area Polesine Camerini 3B

Co-Evolve Working Group

- Po Delta Park Veneto Authority
- Municipality of Porto Tolle
- ENEL Itd
- Fischermen Consortium Scardovari
- Tour Operators Consortium “Po e suo Delta”



THANK YOU FOR YOUR ATTENTION!

welcome@istitutodelta.it

