

WP4 Pilot actions

Rosolina Mare 3A

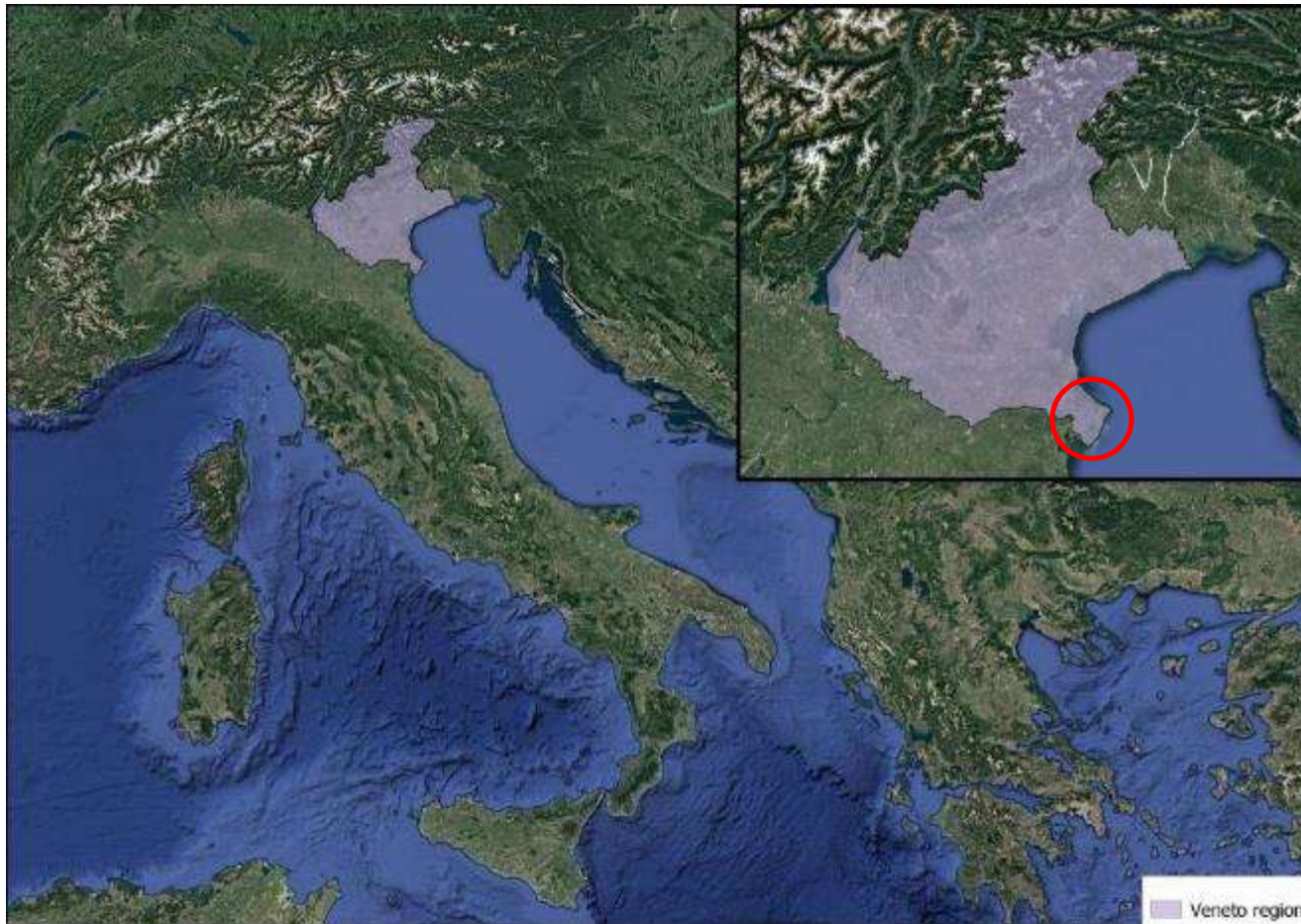
Polesine Camerini 3B

Delta Po Park Veneto Region Authority



CO-EVOLVE dissemination event
Barcelona, 5th June 2019

Introducing Po Delta Park Veneto Region Pilot Area



Introducing Po Delta Park Veneto Region Pilot Area



Pilot Area Rosolina Mare 3A



- The PA is inside the Municipality of Rosolina in the Italian delta, which is unique for its biological characteristics
- 50% occupied by brackish water wetlands. The coastal area has dunes and relict pine wood
- The PA has become more sensible given the urban sprawl and tourism's demand which has been increased in the last years (4,7% in 2014-2015, 50% are foreigners)



Pilot Area Rosolina Mare 3A

Objective of the pilot action

Implement a prototype for sustainable movable lodging included in a camping in order to allow and experiment a new and innovative solutions to improve the environmental compatibility. The aim is to contain urban sprawl in the protected area and in the meanwhile respond to tourism's demand and ecotourism that affect the coastal zone.



Pilot Area Polesine Camerini 3B



- The PA is located in the central part of the Po river delta in the Municipality of Porto Tolle
- It is a natural area composed mostly by wetlands. Ecotourism, fishing and agriculture are the main drivers for the local economy
- Other threats are the possibility of navigation inside the lagoons



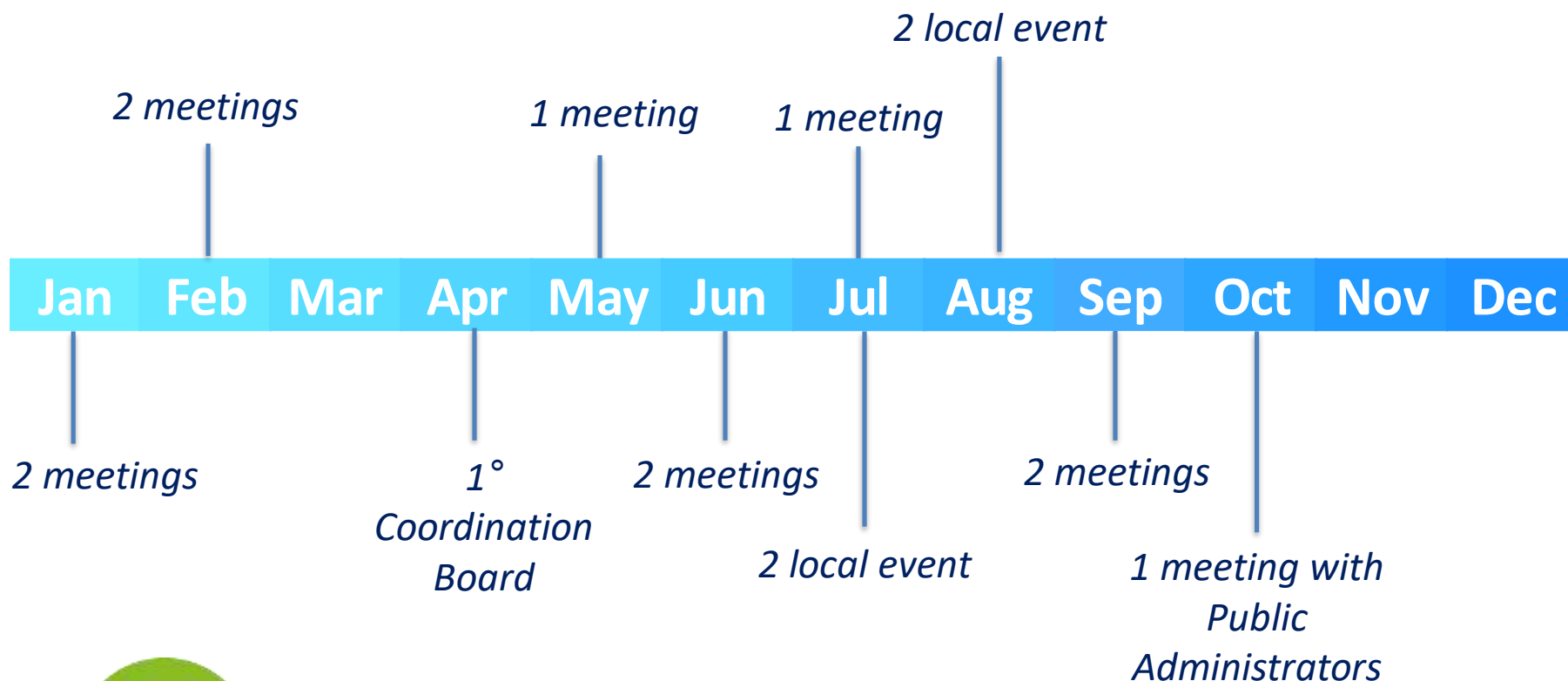
Pilot Area Polesine Camerini 3B

Objective of the pilot action

The implementation of a Delta Observatory allowing to establish an environmental and tourist observatory, which will give indications on sustainability tourism measures and being also a local and international reference for scientific knowledge in the environmental and tourism fields of the Upper Adriatic basin.



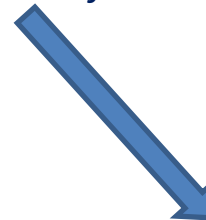
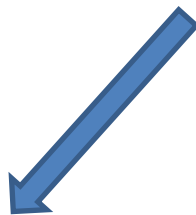
Stakeholder involvement for PAs in 2018



Stakeholder involvement for PAs in 2018

Municipality of Rosolina; Municipality of Porto Tolle; Delta Po Park Authority; Fishery Associations; owners of extensive lagoon with fish farming; environmental association; farmers; tourism operators and villages;

Europa Place Consortium of Rosolina



*Pressure decrease (touristic above all) on the
Rosolina Mare's environment*

*Establishment of the Po Delta
Observatory*

*Important to extend the tourism offer to all-year
round*



1st Coordination Board

6th April 2018: 1st
 Coordination Board with
 local actors

Venerdì 06 Aprile 2018 – ore 09:00

Sala Consiglio del Comune di Rosolina -
Viale Guglielmo Marconi 24 Rosolina (RO)

**Il Progetto CO EVOLVE e la sua
applicazione nelle aree pilota di Rosolina
Mare e Polesine Camerini**

1° Tavolo di Coordinamento

9:00 – 9:15	Benvenuto e saluti <i>Franco Vitale - Sindaco di Rosolina</i>
9:15 – 9:45	Presentazione del progetto CO-EVOLVE obiettivi e risultati attesi <i>Marco Gottardi - Ente Parco Regionale Veneto</i>
09:45 – 10:45	La pianificazione della strategia turistica nelle due aree pilota <i>Filippo Magni / Federica Appiotti - Università IUAV di Venezia</i>
10:45 – 11:00	Pausa caffè
11:00 – 12:00	Focus group: criticità, scenari risolutivi sviluppo futuro delle aree pilota: Rosolina e Polesine Camerini
12:00 – 12:30	Sintesi dei risultati del Focus group - operatori turistici
12:30 – 13:00	Discussione e conclusioni <i>Claudio Bellan - Sindaco di Porto Tolle</i> <i>Franco Vitale - Sindaco di Rosolina</i>



1st Coordination Board

6th April 2018: 1st Coordination Board with local actors



Presentation of the local area

Presentations with local operators inside the village where the movable lodging will be implemented

porte aperte a tutti

vendita diretta

ROSAPINETA Sud
VILLAGE TURISTICO

Giovedì 12 Luglio
ore 20.00

Festa del Delta Del Po

Scopri i tesori del territorio
direttamente dai produttori.

In occasione della serata il Villaggio Rosapineta Sud sarà aperto a tutti (ingresso pasteggiato al mare).
A seguire spettacolo dell'animazione in Arena.

Produttori partecipanti all'evento:

Società Agricola Tumiatti (il parco del parco del delta del po)
Azienda agricola Zecchin (produttore di miele, olio, olio)
Società Agricola Moretto (produttore di olio)
produttori birra artigianale e bio
Azienda Agricola Vitivinicola Valle Rigoni (vini tipici padovani)
Azienda Agricola Nardini (gestore produttore di formaggi)
Panificio Antico Forno a Legna di Borghetto (pani, biscotti)
Locandina (museo laboratorio)

Menu:

antipasto con salame*
minestrone e pane*
risotto salsiccia* raviggioli*
grigliata di carne
1 bicchiere di vino* o birra*
acqua 1/2 litro
Prezzo 14 € adulti
7 € bambini.

Vendita diretta da espositori

assaggia la vita del Villaggio



Meeting with local stakeholders

18th of October: meeting in Porto Viro with local administrations and local operators



Pilot Area Rosolina Mare 3A

12th of April
presentation of the eco-
friendly bungalow and
CO-EVOLVE project in
Milan at «Salone Fuori»
event



Pilot Area n. 3A
name: Rosolina

Pilot Area n. 3B
name: Polesine Camerini
Porto Tolle



NUOVI SOGNI

CRIPPA CONCEPT

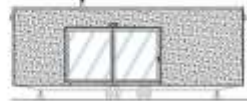


Pilot Area Rosolina Mare 3A

NEXT-EVO GREEN-860X430



BIO GREEN



Pilot Area Polesine Camerini 3B

Updating of Land Cover database in the Po Delta

Updating and reviewing of cartography regarding the territory in particular regarding the Park territory.

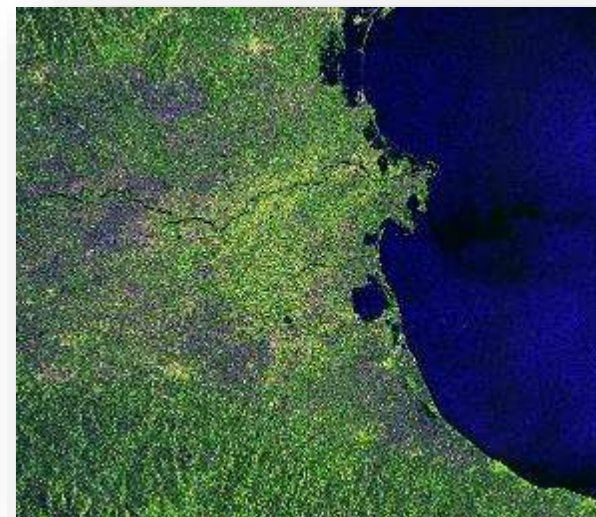


Images provided by Corvallis S.p.A.



Pilot Area Polesine Camerini 3B

The availability of satellite images in open source mode allows the implementation of a classification system based on the analysis of multiple multi-temporal frames able to analyze the phenological behavior of the annual crop.



Landsat8 images
September 20014, august 2015, october 2014

Example of Sentilel1 image (october 2014)

Images provided by Corvallis S.p.A.

Pilot Area Polesine Camerini 3B

Example of the high quality of the map.



Images provided by Corvallis S.p.A.



Pilot Area Polesine Camerini 3B



The intensity of the green color in the NDVI map is directly proportional to the photosynthetic activity of the vegetation



Brown indicates no leaf coverage.
Light green indicates good leaf coverage.
Intense green indicates a particularly dense foliar covering.



Images provided by Corvallis S.p.A.

IV. Pilot Area Polesine Camerini 3B

Technical Observative Centre – G.I.S. database

One of the project's component is to develop a cartographic database that contain the following information:

- Environmental data
- Tourist and advertising data
- Technical data, useful for environmental, urban and strategic planning
- Performance indicators about project works



IV. Pilot Area Polesine Camerini 3B

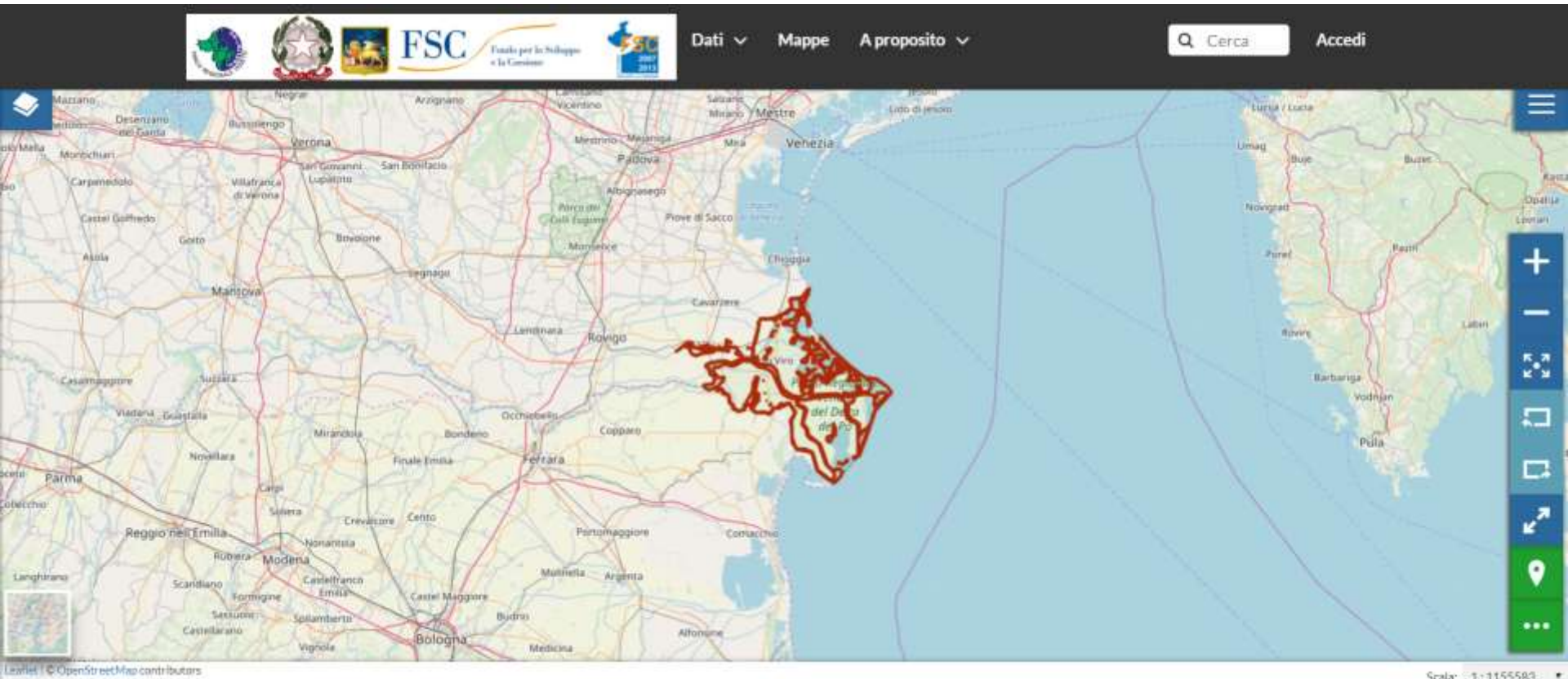
Technical Observative Center – Catalogue and Cartographic Portal

There are two ways to access the database:

- Cartographic Portal: it contains thematic maps created from Po Delta Authority about predefined arguments
- Data Catalogue: users can access a catalogue that contains every available data. With this data they can:
 - ✓ Find interesting information using metadata
 - ✓ View and download found information
 - ✓ Compose independently personalized maps that contain information found in the catalogue
 - ✓ Connect and query data from Partner's database that contains project common parameter (environmental, touristic, etc...)



Technical Observative Center – Cartographic Portal



Images provided by Corvallis S.p.A.

Technical Observative Center – Example of Catalogue



Dati ▾ Mappe A proposito ▾

Cerca

Accedi

Esplora Layer

Carica Layer

Selected Layers

Add layers through the
 "checkboxes".

Crea una Mappa

Filtri

Pulisci

TESTO

Cerca

PAROLE CHIAVE

TIPO

Raster Layers

5

Vector Layer

1

12 Layers found

1



AMBIENTE

**c0605011 - Perimetrazione delle aree boscate
 del Veneto**

No abstract provided

admin 12 Oct 2018 1 0 0 Crea una Mappa



AMBIENTE

**c0605021 - Perimetrazione delle aree boscate
 del Veneto con copertura inferiore al 30%**

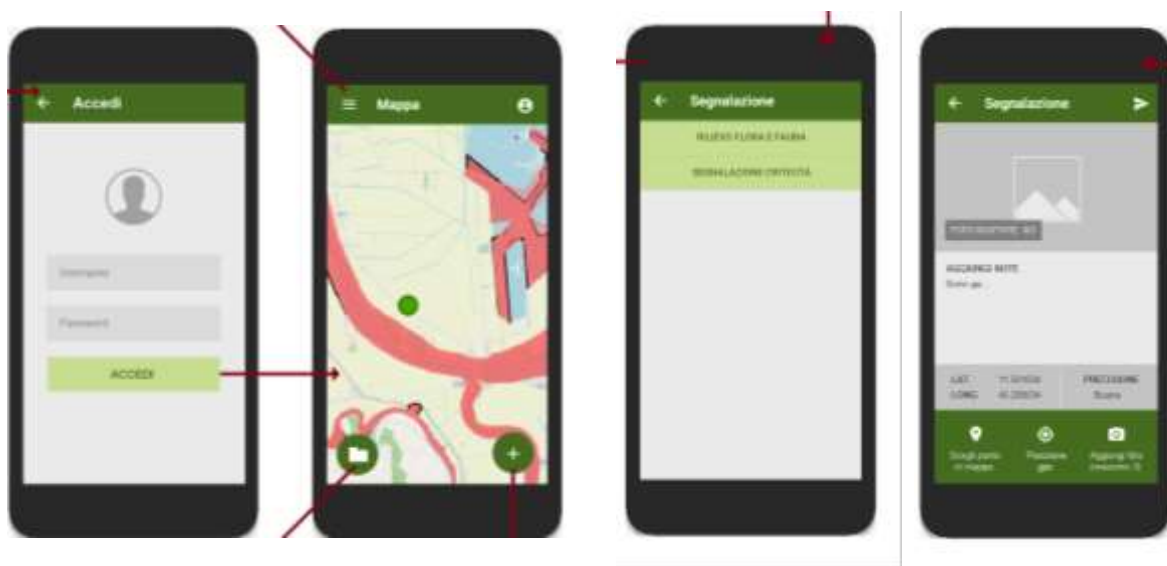
No abstract provided

Images provided by Corvallis S.p.A.

IV. Pilot Area Polesine Camerini 3B

Technical Observative Center – Mobile Data Collector

On April will be upload in Google Play and IOS App Store a mobile tool to collect reports from users, regarding the data monitored by the observatory.



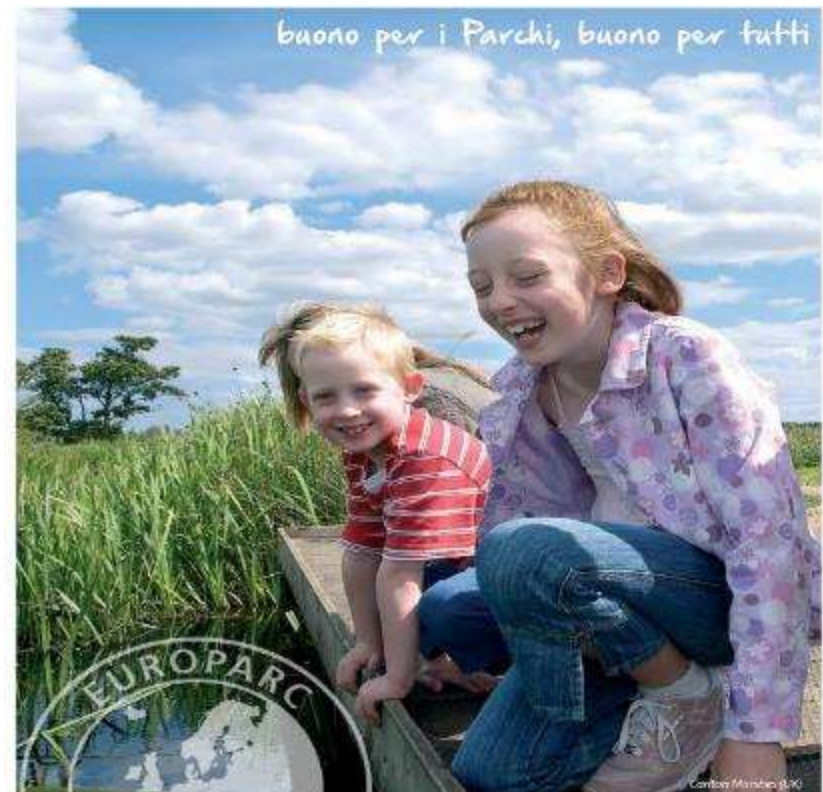
Images provided by Corvallis S.p.A.

Further steps and perspectives

The Po Delta Park in collaboration with **Federparchi** is proposing to tourism operators to submit their candidacy to obtain the «**European Charter for Sustainable Tourism in Protected Areas**» in order to develop and strenght a common strategy for sustainable tourism



TURISMO
SOSTENIBILE
NELLE AREE PROTETTE



Thank you for your attention!

welcome@istitutodelta.it

federico.rosa@abitat.it

simone.rinaldo@corvallis.it



ISTITUTO DELTA
ECOLOGIA APPLICATA

