

COMPOSE 4th Newsletter

[Campaign Preview](#)

[HTML Source](#)

[Plain-Text Email](#)

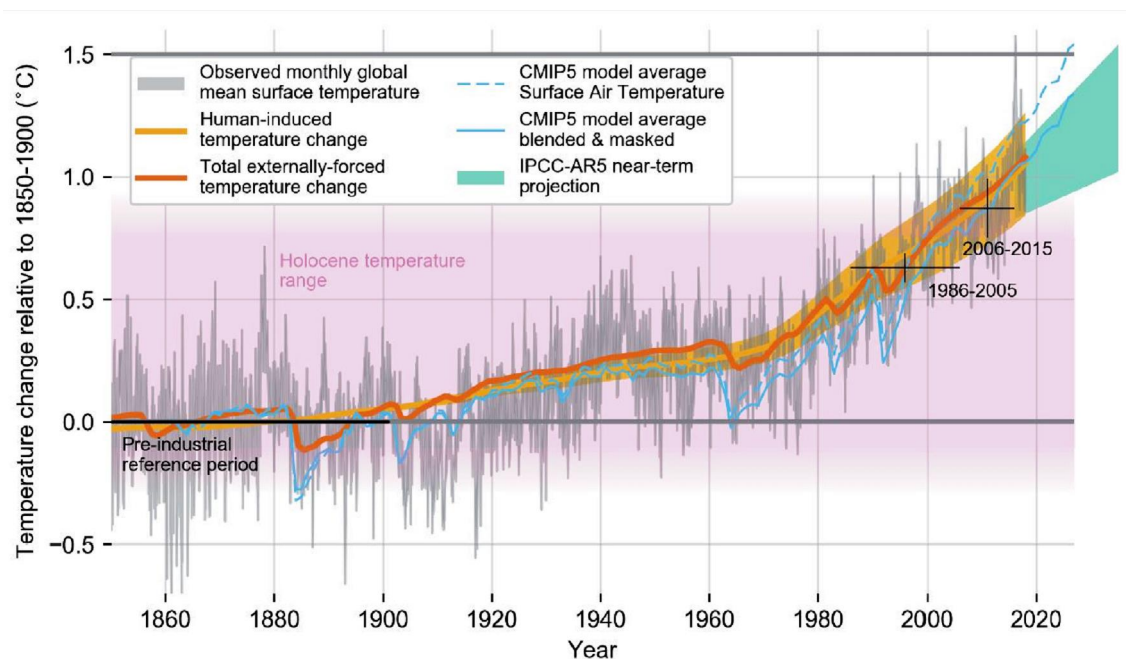
[Details](#)



COMPOSE is finishing with pilot case implementations

According to the plan, project partners are finishing with the implementation of promised pilot actions. The indicators show a positive energy interventions with involved stakeholders and tested bottom up methodological approach. Through awareness raising campaigns, we reached more than 140.000 people and will impact in more than 1 million Euro investments on EE and RES measures.

Global warming of 1,5°C



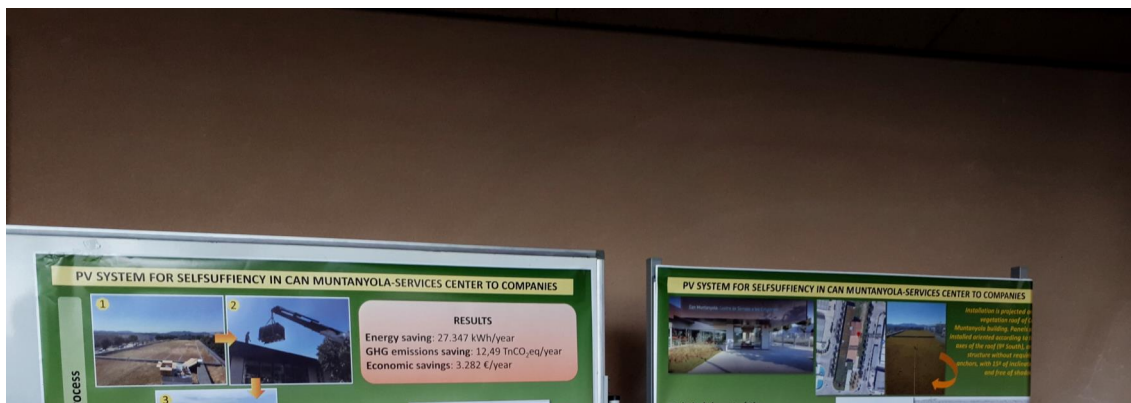
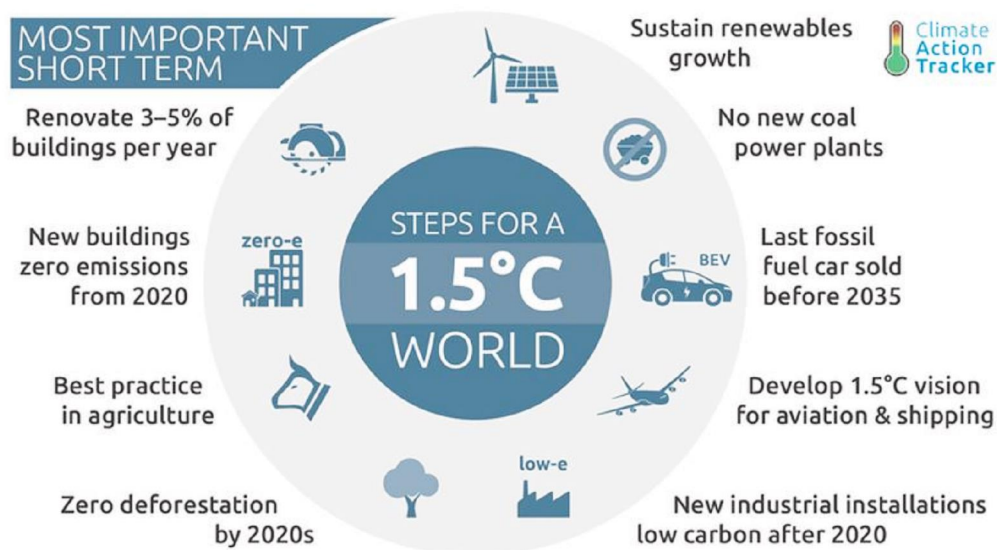
IPCC report about consequences of global warming

Before the Climate change conference, organized by UN in Katowice (Poland), IPCC published a report with in depth explanation about consequences of global warming. The publication was presented at 5th SC meeting in Granollers by a member of IPCC, the project ambassador, prof. dr. Lučka Kajfež Bogataj from Biotechnical faculty in Ljubljana. (picture source ipcc.ch). She appointed, that Mediterranean is a climate change hot spot and one of the most vulnerable areas in the world. The forecasts of consequences regarding global warming are alarming, so she stressed the urgency of measures, accepted by the majority of countries. Table below: Lučka Kajfež Bogataj, Granollers, 28.11.2018

	Warming of	Warming of	Warming of
--	------------	------------	------------

	1.5°C or less	1.5°C -2°C	2°C - 3°C
dry-spells	Increase (about 7%) in dry-spells	High confidence of further increases (11%) in dry spells	Substantial reductions in precipitation very likely
runoff	Reduction in runoff of about 9% (likely range: 4.5–15.5%)	High confidence of further reductions (about 17%) in runoff (likely range 8–28%)	Substantial reductions runoff very likely
water deficit	Risk of water deficit	Higher risks for water deficit	Very high risks for water deficit

The most important things to do in the next 5 to 10 years are presented on the picture below (Most important steps for a 1,5 °C world) and this is exactly, what COMPOSE do with implementation of pilot cases:





Municipality Granollers invests in renewable energy

Within 5th project partner's meeting in Granollers, representatives of city council and companies, which develop renewable energy investments, presented a new photovoltaic system on the roof of technical faculty. the system enougs for energy self- sufficiency and is a simple case of use of sun, without any impact on exterior of a building. Respecting needs of the building, energy savings are about 27 MWh annually.



COMPOSE is continuing with capitalisation actions

In the comming year, COMPOSE partners will attend numerous of activities and will organize meetings on regional, national and european level. The goal is to promote a common model and finish this part of the project with a memorandum of understanding, which will be signed at least by 242 entities.

**For all information, please, don't hesitate to
contact veronika.valentar@kmetijski-zavod.si**

Copyright © 2018 Compose, All rights reserved.

You are receiving this email because you opted in via our website.

Our mailing address is:

Compose
Vinarska 14
Maribor 2000
Slovenia

Add us to your address book

Want to change how you receive these emails?

You can update your preferences or unsubscribe from this list.

