



Mid-TERM CONFERENCE
DE - Bautzen | 07.11.2018



REGIONAL ACTION PLAN Lower Silesia - Liberec Region



TRANS-BORDERS

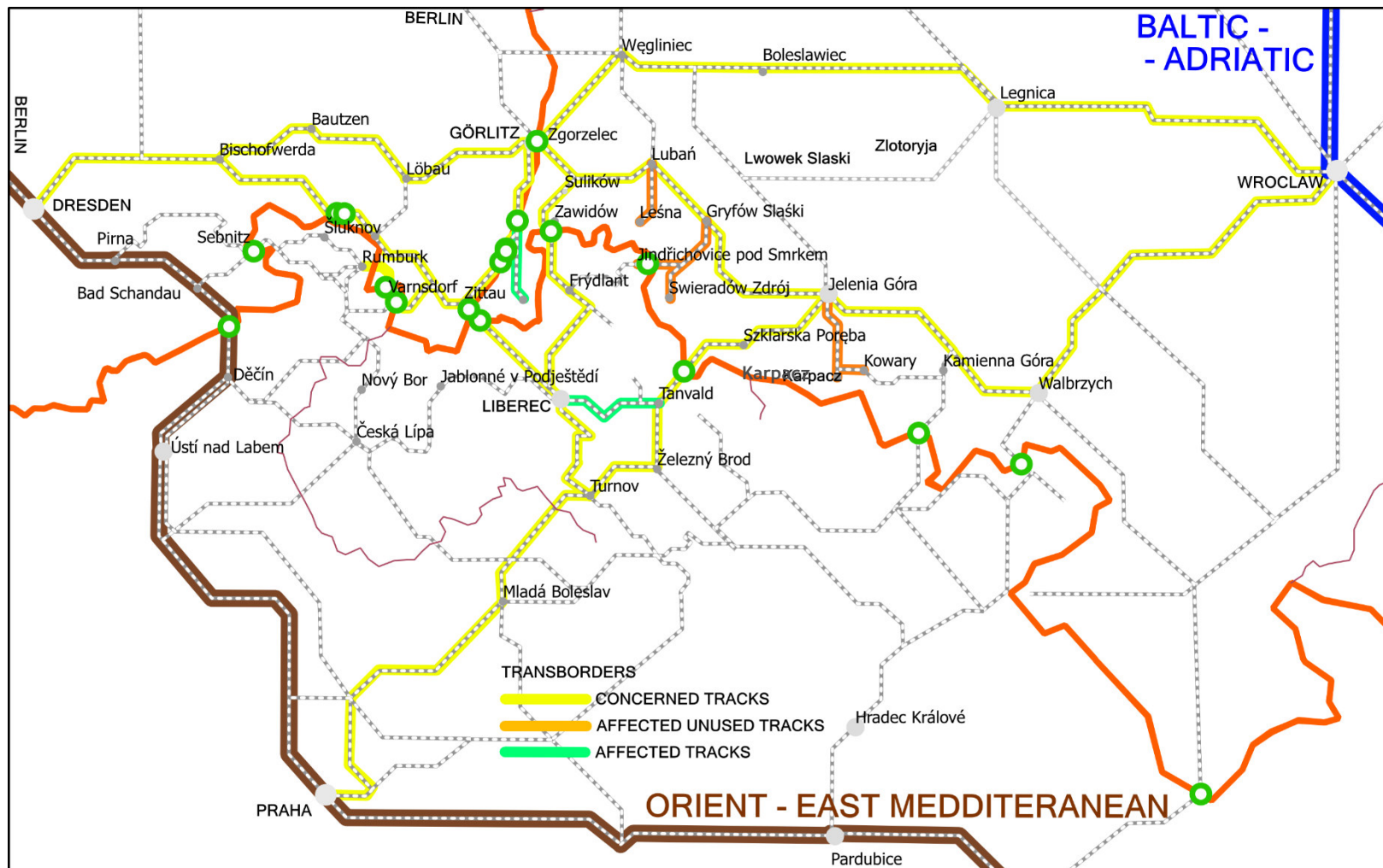
Motivation

Tracks

Stakeholders

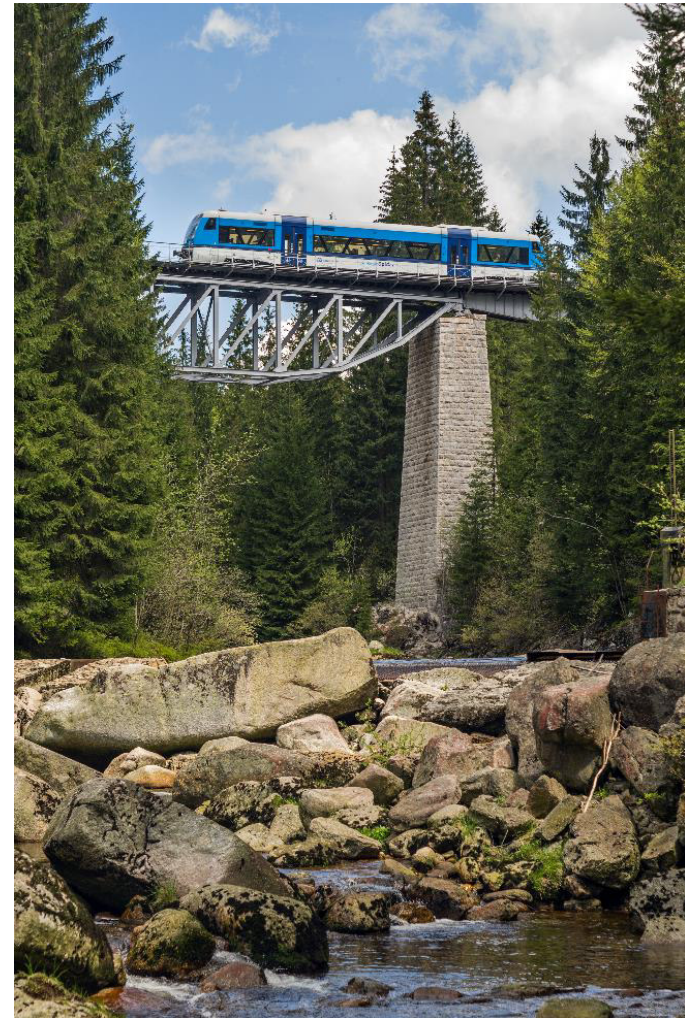
Actions to be taken





Motivation

- For the long distance european rail traveling is faster to avoid the Borderland CZ-D-PL region
- Connecting Wrocław to Praha via Jelenia Góra
- Reaching the TEN-T node Görlitz from Liberec via Frýdlant and Zgorzelec
- Securing funds for rail infrastructure improvement
- The borders are not a barrier
- Reopening the unused tracks to the turistic destinations



Rail tracks to solve

Crossborder connection

Zgorzelec - Zawidów - Černousy - Liberec - (Praha)

Wrocław - Wałbrzych - Jelenia Góra - Tanvald - Praha/Liberec

Gryfów Śląski - Świeradów-Zdrój/Jindřichovice pod Smrkem

Liberec - (Porajów) - Zittau

Affected connection

Wrocław - Legnica - Bolesławiec - Zgorzelec - (Görlitz - Dresden)

Jelenia Góra - Gryfów Śląski - Lubań Śląski - Zgorzelec - Görlitz

Görlitz - Zittau

Zgorzelec - Bogatynia

Liberec - Zittau

Jelenia Góra - Karpacz/Kowary

Jelenia Góra - Lwówek Śląski - Złotoryja - Legnica



Stakeholders

PL

Województwo Dolnośląskie

Municipalities:

Bolesławiec, Jelenia Góra,
Zgorzelec, Wałbrzych

Infrastructure:

Ministry of Infrastructure
PKP Polskie Linie Kolejowe S.A.

Service provider:

Koleje Dolnośląskie S.A.

CZ

Liberecký kraj

KORID LK

Municipalities:

Liberec, Jablonec nad Nisou,
Mladá Boleslav

Infrastructure:




Ministry of transport
SŽDC - Správa železniční
dopravní cesty s.o.

Service provider:

České dráhy a.s.
Die Länderbahn



Actions to be taken - common

-  Contact list of responsible workers in stakeholders structure
-  Joint action plans CZ-D-PL
 - Memorandum of regional stakeholders in Borderland CZ/D/PL
 - Incorporation the room for intended infrastructure improvement in the territorialy planning documentation
 - Developing the co-financing model of the cross-border passanger rail transport service
-  Securing funds for interoperability improvement (funds for planning and bulding platforms, P+R, K+R, B+R)
 - Applying for Securing funds for rail and station improvements on Ministry of transport and State infrastructure investment funds
 - Support the authorization process of available modern rolling stocks in CZ and PL rail network
 - Modern rolling stock (eletric on electrified rail lines)
 - Prolonging L6 to Zawidów

Actions to be taken

PL

Continuation of the revitalization railway line:

Wrocław - Wałbrzych - Jelenia Góra - Zgorzelec

Revitalization railway lines:

Jelenia Góra - Karpacz/Kowary

Gryfów Śl. - Świeradów-Zdrój

Liberec - (Porajów) - Zittau - PL section

Zawidów - Studniska

Connection of the cross-border region Jelenia Góra/Liberec with the E30 corridor by a railway line:

Jelenia Góra - Lwówek Śląski - Złotoryja - Legnica

CZ

Revitalization railway lines:

Praha - Turnov - Liberec - Černousy

Turnov - Tanvald - Harrachov

Outputs from Valbek as hard data for SFDI (State infrastructure investment fund)

Prolonging L6 to Zawidów

Authorisation for Stadler Regio-Shuttle in PL



Pavel Blažek,
Radim Šarapatka

KORID LK

PP 4



Agnieszka Zakęś

Marshal Office of the Lower
Silesian Voivodship

PP3





Mid-TERM CONFERENCE
DE - Bautzen | 07.11.2018



REGIONAL ACTION PLAN Upper Lusatia - Liberec Region



TRANS-BORDERS

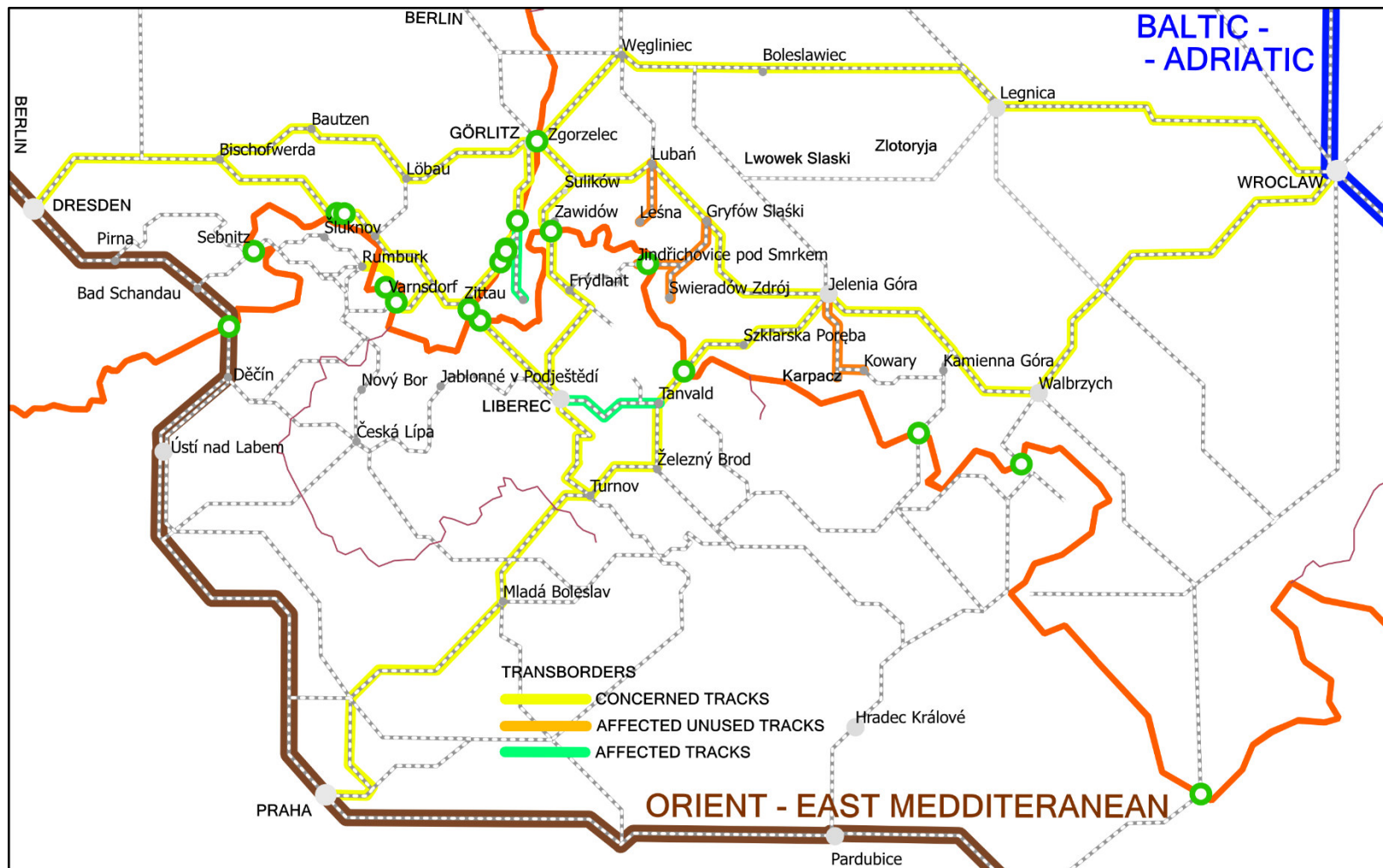
Motivation

Tracks

Stakeholders

Actions to be
taken





Motivation

- For the long distance European rail travelling is faster to avoid the Borderland CZ-D-PL region
- **Connection of Liberec with rail nodes Prague and Görlitz**
- Reaching the TEN-T node Görlitz from Liberec via Zittau
- Securing funds for rail infrastructure improvement
- The borders are not a barrier
- Electrification Görlitz - Dresden and Görlitz - Horka - Cottbus (to allow direct trains Berlin - Görlitz)



Rail tracks to solve

Crossborder connections

Dresden - Zittau - Liberec

Görlitz - Zittau - (Porajów) - Liberec - (Praha)

Görlitz - Zgorzelec - Zawidów - Liberec - (Praha)



Stakeholders

D

Freistaat Sachsen - **SMWA**

ZVON

Municipalities:

Görlitz, Zittau

Infrastructure:

DB NETZ

Service provider:

Die Länderbahn

DB Regio

CZ

Liberecký kraj

KORID LK

Municipalities:

Liberec, Jablonec nad Nisou,

Mladá Boleslav

Infrastructure:

Ministry of transport

SŽDC - Správa železniční
dopravní cesty s.o.


Service provider:

Die Länderbahn

České dráhy a.s.



Actions to be taken - common

-  **Contact list of responsible workers in stakeholders structure**
- Joint action plans CZ-D-PL
- **Memorandum of regional stakeholders in Borderland CZ/D/PL**
- Incorporation the room for intended infrastructure improvement in the territorialy planning documentation
- Developing the **co-financing model** of the cross-border passenger rail transport service
- Promotional ride around the Borderland CZ/D/PL
- Feasibility study for the extension of rail traffic on the two rail corridors Liberec - Zittau/Zawidów - Görlitz (could be solved in the Outputs from Valbek)



Actions to be taken - common

- € Securing funds for interoperability improvement (funds for planning and building platforms, P+R, K+R, B+R)
- Applying for Securing funds for rail and station improvements on Ministry of transport and State infrastructure investment funds
 - Support the **authorization process** of available modern rolling stocks in CZ and D rail network
 - Co-financing reconstruction the section Zittau - Hrádek nad Nisou





Pavel Blažek
Radim Šarapatka

KORID LK

PP 4



Thomas Kocholl
Michael Roggenkamp

Railistics (Ederlog) for VON

PP 5

