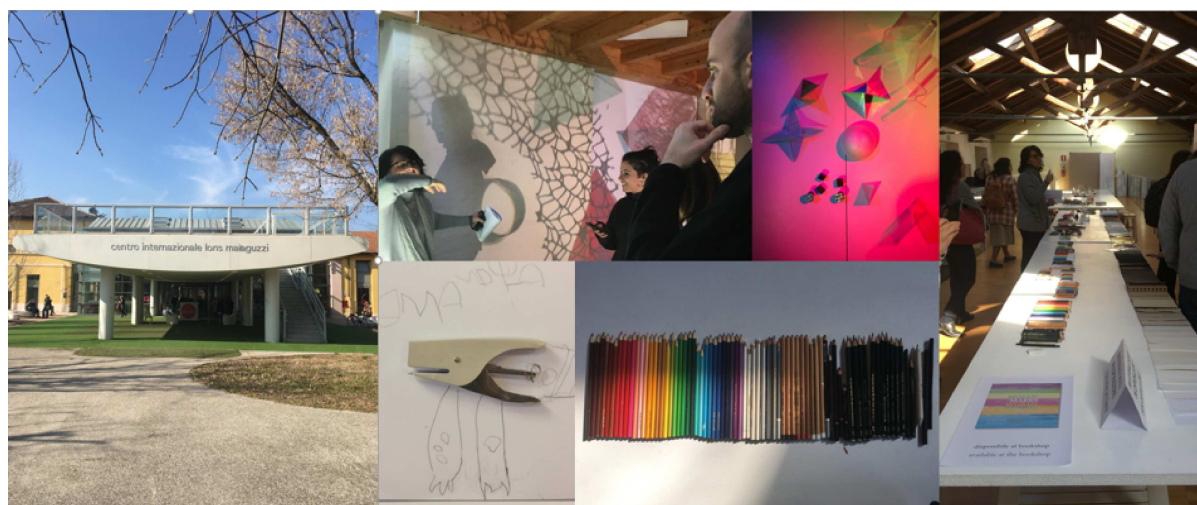


+RESILIENT Newsletter 1



## +RESILIENT Mediterranean Open RESouRcEs for Social Innovation of SocialLy Responsive ENTerprises



+RESILIENT puts together a 4-helix partnership of 8 MED countries to tackle the need for innovation conducive to increased socially-responsive competitiveness of SMEs & stimulate new jobs, especially for companies operating in the social economy. It aims to kickstart a process of policy change at regional level in the involved areas resulting in the integration of successful elements into the new Cohesion policy (EU2020+). It is an integrated project that establishes a structural approach to policy & practice improvement of emerging dynamics in social innovation through an overarching process based on the intertwined use of open data

& the creation of a transnational socially-responsive value chain. This includes studying existing initiatives, adapting and testing, with the final objective of capitalizing them in the MED area.

---



## PROJECT'S STUDY VISITS

The five +Resilient study visits that took place between November 2018 and March 2019 and were selected according to identified relevant use-case scenarios and were carried out as peer-reviews. They represent five in-depth study cases about: **urban regeneration** (Reggio Emilia), **sharing economies** and **tech-led social innovation** (Marseille and Barcelona), open Data (Zaragoza-Aragón) and **rural development** (Podravje Region).

### Sharing economies and tech-led social innovation in Barcelona



During Barcelona study visit different examples of public policies, facilities, tools & social economy networks to strengthen the

ecosystem of SVRC were presented. In that sense, new financing tools and strategies to support social economy projects launched by Barcelona Activa were explained and shared. The visit was strategically held during the Sharing Cities Summit, an international public event on Collaborative policies for sharing economy that showed the role of Barcelona as a world reference on the Commons-based Collaborative economy. Barcelona counts with more than a thousand initiatives of sharing economy (maker world, open design, fablabs, research centres, citizenship science and industry; waste and circular economy, fair trade and responsible consumption, free software, telecommunication networks, energy and mobility).

The +RESILIENT Delegation had the chance to participate in the co-creation activities and presentations of the summit taking part in the Procomuns MeetUp and in a conference about the challenges of the platform economy. The participants visited “La Fábrica del Sol”, an example of the network of public fablabs of Barcelona where digital social innovation facilities are open to the citizens. A measure called “Democratization of care economy through Social Economy” was also presented during the visit, and it showed the determination of the City Council to provide a public policy fostering and strengthening the care economy.

---

**The partners of +Resilient participated on November 14, 2018 at the study visit organized by ITANNOVA**



After Barcelona the second part of the visit in Spain focused on open data applications in public administration and its possible applications. In addition, the social economy laboratory at Zaragoza University, which is actively collaborating in this project, has presented the social economy sector in Aragon. In this way, the visit complemented the part that took place in Barcelona, giving a complete vision of the two main lines of the project: open data and social economy.

Two enterprises, selected as examples of social economy companies of Aragon, were visited by the +Resilient Delegation. Mapiser, a labour insertion company that offers models of business excellence that pay attention to the worker in all its organizational processes and Arapack, that integrates disabled people.

---

**Study Visit in Podravje Region, Slovenia on 15th and 16th  
January 2019**



Aim of the study visit was to provide participants with the opportunity to get new information about the strategies and practices to reinforce the social economy in Podravje region, with the focus on development of social economy in rural areas and compare them with their own experience.

On the first day, after a brief introduction, the participants visited the subregion Haloze. The main theme of the day was presentation of the good practices regarding cooperation of various stakeholders in agricultural sector with aim of improving production capabilities and marketing position of regional wine producers, revitalisation of rural areas through removal of overgrown grassland areas and fostering of tourism.

On the second day the study visit was entirely located in Maribor, where several good practices were presented – efforts to establish a sustainable ecosystem for support of development of social entrepreneurship, revitalisation of city centre, cooperation of local farmers in order to achieve better market position and foster organic farming, development of advanced applied systems and employment of disadvantaged groups through restaurant which operates as a cooperative. The participant also discussed the Importance of networks in fostering social innovations and social economy.

---

## The third study visit of +Resilient project on 14 and 15 February 2019 in Reggio Emilia, Italy



The third study visit organized in the framework of the +Resilient project has been held on 14 and 15 February 2019 in Reggio Emilia under the organization of ANCI – Associazione Italiana dei Comuni Italiani in collaboration with the Municipality of Reggio Emilia. A wide delegation from 7 Euro-Mediterranean Countries has taken part to a two days visit aimed at knowing the experiences of social and digital innovation promoting a socially sustainable economic development in the City.

The choice of Reggio Emilia as a case study is due to the peculiar cooperative and participative tradition of the City. The municipality of Reggio Emilia is at the forefront in Italy in what regards public policies promoting development through social and digital innovation. The process of de-industrialization, alongside with the abolition of elected submunicipal districts pushed the City Government to find new solutions for local development and citizen participation. This led to the activation of many different projects of urban regeneration of abandoned areas and citizens involvement in managing public buildings and spaces. Most of these projects are framed in the [„Quartiere Bene Comune“](#) (Neighborhood as a Commons) initiative, that has been presented by the Deputy Mayor in charge of Digital Innovation and

Participation Valeria Montanari.

The study visit has been the occasion to see urban regeneration processes that led to the activation of economic opportunities related with digital innovation ([Coviolo Wireless](#)), start-up incubation ([Chiostri di San Pietro](#)), social inclusion ([la Polveriera](#)) and socio-educational services ([Loris Malaguzzi International Centre](#)).

---

### **From social innovation clusters towards technologically-led innovation clusters in the South Region**



The fourth study visit of the +Resilient project was organised by Aix-Marseille University and the LEST (Institute of Labour Economics and Industrial Sociology). The visit took place in Marseille on the 12<sup>th</sup> and 13<sup>th</sup> of March. Over 20 representatives from 6 European countries and close to 20 local stakeholders participated in the event.

The first day of the visit took place in and around “La Friche la Belle de Mai”, more commonly known as “LaFriche”. La Friche is an old tobacco factory that is today run by a collective interest cooperative whose mission consists of developing arts and culture in the deprived urban neighbourhood of “La Belle de Mai”. Presentations were made by local stakeholders from five different domains including digital humanities (against digital exclusion), fab-labs and makers spaces, urban spaces occupied and managed by citizens, home care services for dependent persons and social innovation incubators.

These exchanges were followed by the visit of “Le JardinLevat”, an old convent and its grounds which are now owned by the Marseille City Hall. Le JardinLevat is accessible to all and is a space that brings together different groups of collective actors and that the community of the neighbourhood of La Belle de Mai can enjoy freely.

This first day was concluded by a session of pitching and speed networking between local and European stakeholders, which proved to be a great opportunity to learn about initiatives all across Europe.

The second day begun at “The camp”, a one-year old cluster of private enterprises of societal responsiveness (in partnership with public institutions), that invests to support technologically-led innovations in order to address three major societal challenges for the future of the planet: energy, food and mobility. This visit enabled to show the participants another type of cluster and methods used to promote the link between social innovation and open resources. The visit of The Camp was the perfect transition into the afternoon session, held at the South Region offices and which was focused on open data. Several local actors presented their structures and initiatives that have managed to use open data for the means of social innovation.

---

## PROJECT PARTNERS

Lead Partner





Project co-financed by the European  
Regional Development Fund

**Visit the +Resilient  
website**

**Visit the +Resilient  
Facebook page**

[view this email in your browser](#)

Copyright © 2020 +Resilient project - All rights reserved.

**Our mailing address is:**  
[plus-resilient@regione.veneto.it](mailto:plus-resilient@regione.veneto.it)

Want to change how you receive these emails?  
You can [update your preferences](#) or [unsubscribe from this list](#).

---

This email was sent to <<Email Address>>  
[why did I get this?](#) [unsubscribe from this list](#) [update subscription preferences](#)  
+Resilient project · Riva 8 · Pula 52100 · Croatia

