



TAKING  
**COOPERATION**  
FORWARD

LOW-CARB: Setting the scene, introduction to the project  
Brno | 25 May 2018

**Workshop on Regional Sustainable Urban Mobility Planning for  
FUA: Improving Capacities to Lower CO<sub>2</sub> Emissions**

# PROJECT INFORMATION

<i>Programme priority</i>	2. Cooperating on low-carbon strategies in CENTRAL EUROPE	
<i>Programme priority specific objective</i>	2.3 To improve capacities for mobility planning in functional urban areas to lower CO2 emissions	
<i>Project acronym</i>	LOW-CARB	
<i>Project title</i>	Capacity building for integrated low-carbon mobility planning in functional urban areas	
<i>Project index number</i>	CE1100	
<i>Name of the lead partner organisation/original language</i>	Leipziger Verkehrsbetriebe (LVB) GmbH	
<i>Name of the lead partner organisation/English</i>	Leipzig Transport Company (LVB)	
<i>Project duration</i>	<i>Start date</i>	01.06.2017
36 months	<i>End date</i>	31.05.2020

<b>Total eligible budget</b>	<b>€ 2.649.645,03</b>
ERDF funding	€ 2.177.697,38
Public co-financing	€ 471.947,65

# LOW-CARB objectives

## PROGRAMME SPECIFIC OBJECTIVE 2.3

To improve capacities for mobility planning in functional urban areas to lower CO2 emissions

## PROJECT MAIN OBJECTIVE

**LOW-CARB project aims to enhance capacities for integrated low-carbon mobility planning for functional urban areas in Central Europe.**

## PROJECT SPECIFIC OBJECTIVES

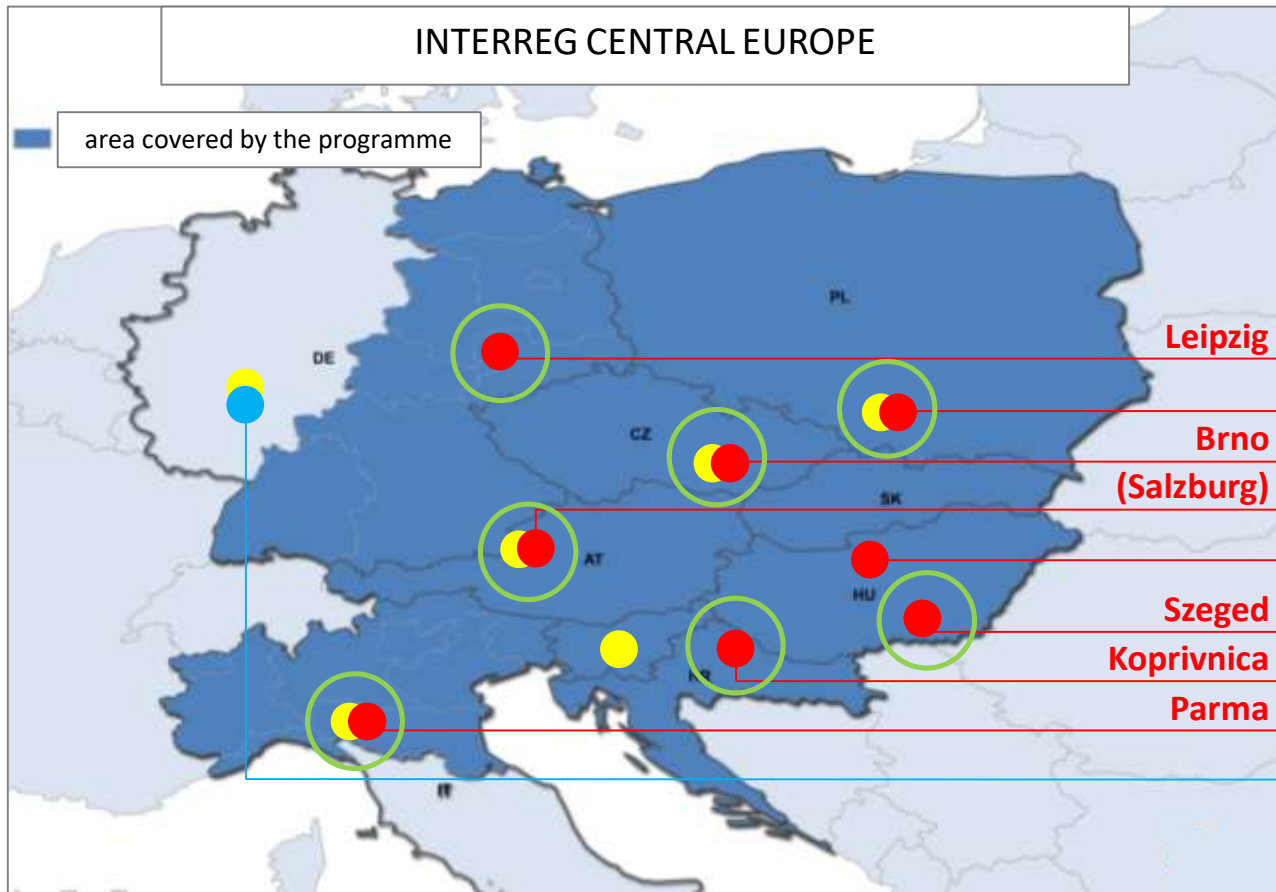
**Integrated low-carbon mobility planning** for functional urban areas

**Capacity building** for integrated low-carbon mobility planning in FUAs

**Pilot actions** for low carbon mobility in FUAs



# MAP OF PARTNERS



<b>Leipzig</b>	LVB, MDV, Leipzig + UIRS, VRS, WYCA
<b>Brno (Salzburg)</b>	Skawina / City of Krakow SMB + DPMB, IDS JMK SAG + City of Salzburg REC - Regional Environmental Center
<b>Szeged</b>	SZKT
<b>Koprivnica</b>	KOP, UNIN
<b>Parma</b>	TEP + City of Parma Rupprecht Consult

**11**  
project partners

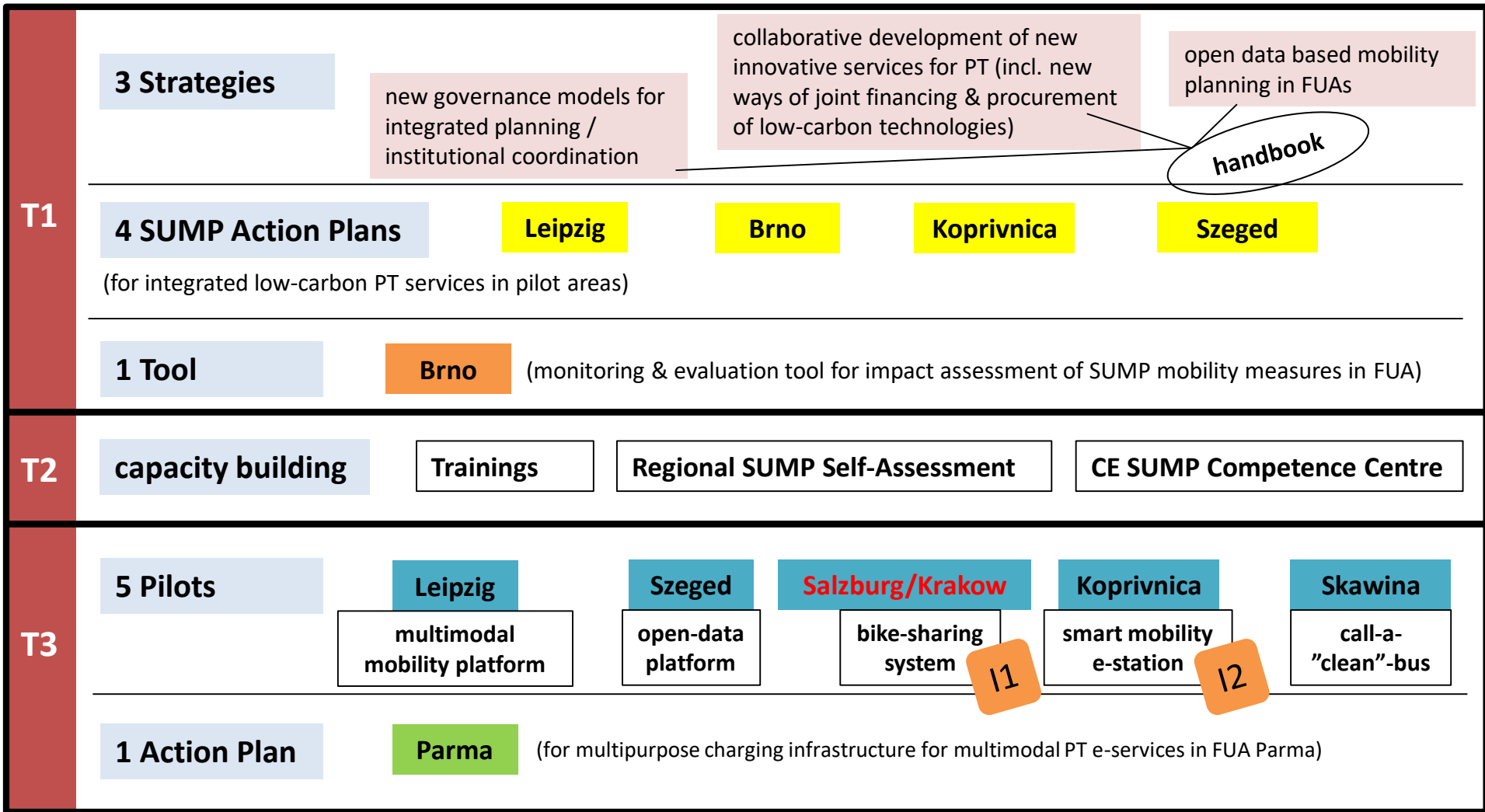
**6**  
associated partners

**7/6**  
FUAs

**7/6**  
CE countries

**9/8**  
countries

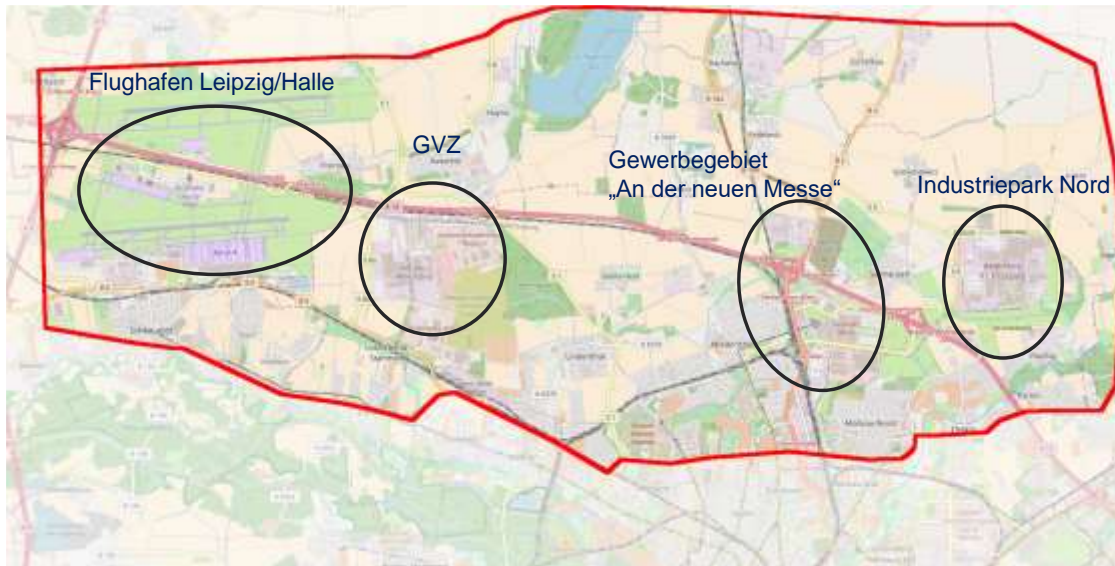
# WORK PACKAGE STRUCTURE





# FUA LEIPZIG (PP: LVB, MDV, LEIPZIG) - STRATEGY & ACTION PLAN

- Finishing of recruitment for all positions in the project team
- Finalisation of local project structure and signing letter of intent by local partners
- Main risks identified
- Kick-off workshop with local stakeholders and external organisations on 26/03/2018
- Definition of key aspects and of project area:



Pilot implementation of multimodal mobility information systems and applications

Challenges:

- Need for multiple change-overs
- User-friendly visualisation of traffic information
- Ensure connections



Basics:



- Data platform of MDV for ensuring connections at intersection points between different companies
- Mobility platforms (L-Mobil, easyGo)



## ■ Monitoring tool for SUMP implementation in functional urban areas

- monitoring tool will provide support for low-carbon mobility planning/action plan implementation
- functionalities for better monitoring, coordination and involvement of stakeholders, clearer responsibility and financing for the implementation of SUMPs
- better coordination of long-time planning, sharing and displaying data for coordination
- increase the awareness about actual solved measures in SUMP between citizens





- ✓ *Involvement of associated partners and city companies - meeting and explanation of design monitoring tool*
  - *31. 1. 2018 - introduction of LOW-CARB project and proposal of design of monitoring tool*
  - *10. 4. 2018 - discussion about design of monitoring tool after visit of GIS administrator at involved partners*



## *Next steps:*

- ✓ *Involvement - associated partners (DPMB, KORDIS JMK)  
- city companies (Teplárny Brno (heating in Brno),  
Brněnské vodovody a kanalizace (public water supply and  
sewerage systems), Technical Networks Brno)*
- ✓ *Cooperation on design of monitoring tool with partners (internships,  
meetings) - February, March 2018*
- ✓ *Design of monitoring tool*
- ✓ *Preparation of tender for development of monitoring tool*
- ✓ *Announcement of tender - June 2018*
- Development of monitoring tool - summer 2018*
- Pilot operation and testing of monitoring tool - autumn 2018*
- Official operation of monitoring tool - January 2019*



# FUA KOPRIVNICA

## - CAPACITY BUILDING & STRATEGY

### *Main activities:*

- *preparation of training materials on low carbon mobility offers and innovative PT offers*
- *development of the strategy and action plan - SUMP into FUA (New country specific SUMP guidelines are being developed; cooperation with Prosperity project; National task force - City of Koprivnica as a partner)*

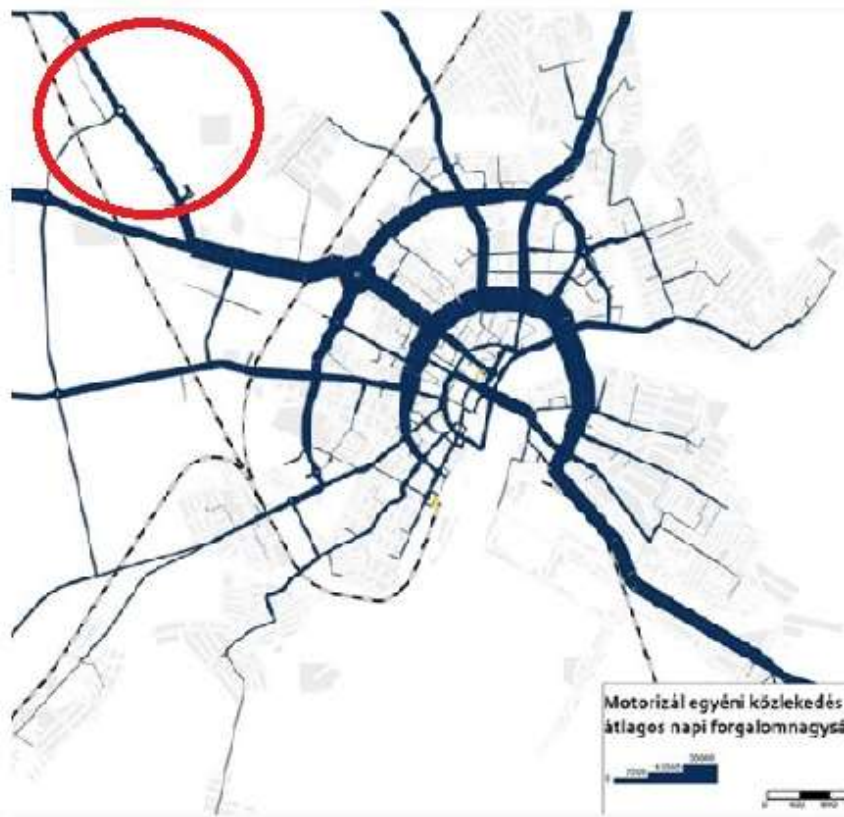


## *Main activities:*

- *Market research & development for/of the smart intermodal PT station with RES energy integration (charging e-bus and e-bikes)*



## Company based travel planning (incl. new PT service planning)

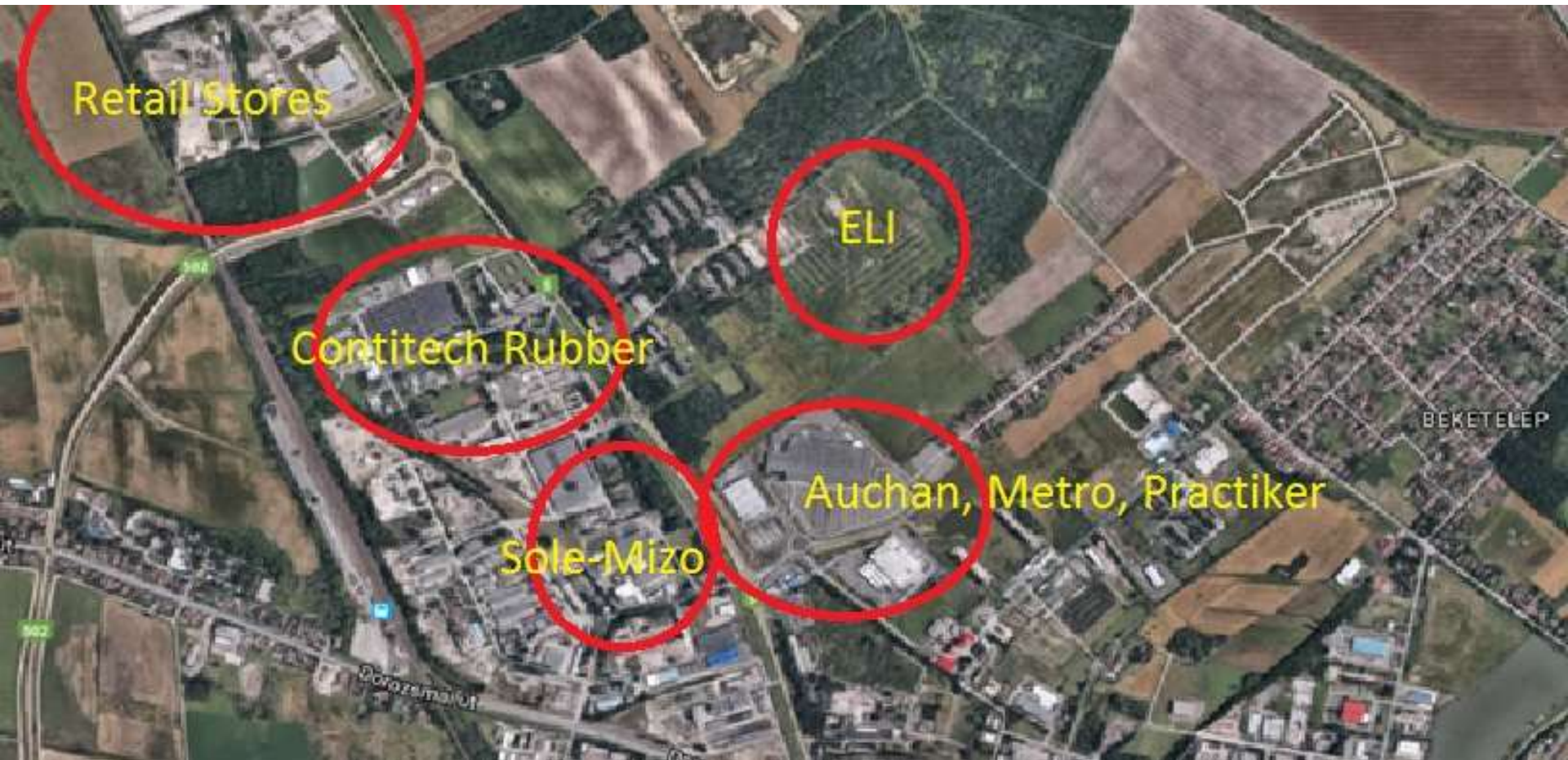


The action area in Szeged is the opening phase of route 5 (Budapesti street), near the M43 highway, and the institutions and facilities connected to the road network here (for example: Szeged Industrial Logistic Centre include ELI, Contitech Rubber, Sole-Mizo, Auchan, Metro etc.). Relatively small area with large number of companies and employees.





# LOCATION SHOWING



### Company based mobility planning (action plan) :

- Get information about workplaces and employees (in progress)
- Tasks are various but in general focusing on the assessment of PT needs at Szeged's industrial area.
- Tendering process has been finished, the winner of the procurement is Közlekedési Kft. (formal meeting on 3rd May 2018).
- First outputs by end of November 2018.

### Wi-Fi based passenger counting system & open data (pilot):

- Wi-Fi devices on buses and trams provide data for PT planning.
- Major issue/ question: how to integrate the collected data to the city's open data platform?
- City-wide event (hackathon) to develop solutions (e.g. apps) for low-carbon mobility services / promotion (e.g. gamification).







# FUA PARMA: - ACTION PLAN

Analysing the electric public network in Parma  
- Strong cooperation with the Municipality -



RECHARGING STATIONS FOR CARS

Multipurpose charging infrastructure



Demand Responsive Transport with an e-bus (midi)  
- feeder bus to new SKA to improve connectivity -

Risks:

- *Rapid Metropolitan Rail (SKA) limited or ceased operations,*
- *Unclear situation with electric bus charging station(Interoperability),*
- *Insufficient vehicle*

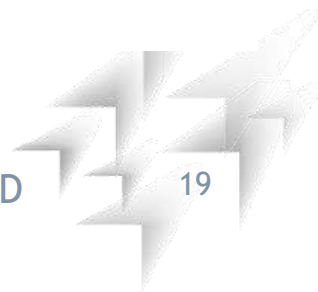
Pilot still to be defined!





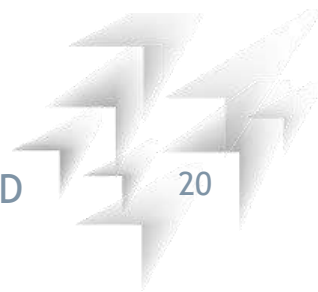
# LOW-CARB OUTPUT: REGIONAL SUMP SELF-ASSESSMENT TOOL

- Questionnaire to **assess the strengths and weaknesses** of running and planned SUMP processes for FUAs
- Based on the main elements of the **SUMP preparation cycle**
- Provides planning authorities with **feedback, best practice examples and references** to useful planning tools
- Based on the existing tool with a focus on cities ([https://qeurope.eu.qualtrics.com/jfe/form/SV\\_6zKoDCps4559ng1](https://qeurope.eu.qualtrics.com/jfe/form/SV_6zKoDCps4559ng1)), aspects of integrated low-carbon mobility planning for FUAs will be integrated
- Questionnaire was reviewed and discussed among PPs



# LOW-CARB OUTPUT: CENTRAL EUROPE SUMP COMPETENCE CENTER

- “Multihoming” - combination of ...
- **Portal approach** includes links to Eltis (e.g. city database, best-practices), CIVINETs websites & SUMP Tool Inventory etc.
- **Platform approach** incl. new elements of national, legislative SUMP information, LOW-CARB Tools & training materials (e.g. for students & young professionals; “multihoming” of project outputs)
- **Language barrier** for daily work support: collecting and providing as much as possible information in CE languages!
- **Sustainability concept**: cooperation with existing initiatives! (e.g. Prosperity: national task forces; CIVINETs)



Thank you!

