



HUPMOBILE

PUBLIC PARTICIPATION GIS (PPGIS) & LIFESTYLES OF RESIDENTS

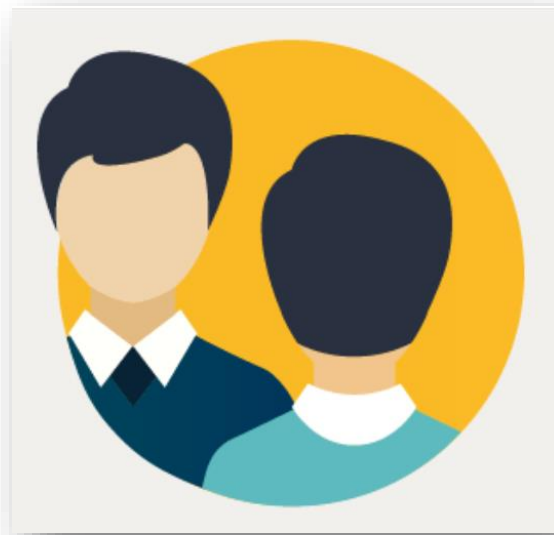
Marketta Kyttä
Aalto University
School of Engineering, Department of Built Environment

1.12.2021

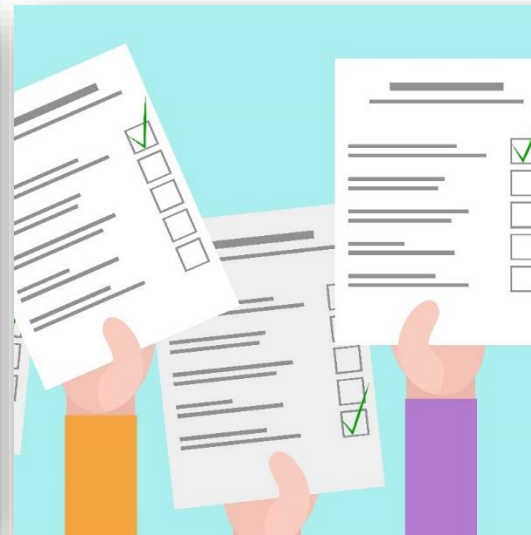
TRADITIONAL WAYS TO GATHER KNOWLEDGE FROM PEOPLE



**Public
hearings**



Interviews



Surveys



Observations

FEEDBACK FROM PEOPLE ABOUT THEIR LIVING ENVIRONMENT

**Sense of
community**

Safe

Close to nature

Peaceful

Dog friendly

Cozy

PUBLIC PARTICIPATION GIS (PPGIS) METHODOLOGY

SoftGIS
knowledge
layers



HardGIS
knowledge
layers



Aalto University

WHY PPGIS KNOWLEDGE?

The analysis of
"soft"
geographical
information
together with
"hard" GIS
knowledge

**TRANSACTIONAL,
PLACE-BASED
RESEARCH**

**NEW APPROACH TO
PARTICIPATORY
PLANNING**

Linking the user
knowledge to
planning and design
solutions and
making large-scale
participation
possible

EXAMPLES OF PPGIS (MAPPINGNAIRE) PROJECTS

Utöhusbadet

Stockholm, Sweden

NZ TRANSPORT AGENCY

Cambridge to Piarere

Have your say on Cambridge to Piarere long-term improvements

Cambridge, New Zealand

Citywide Transit Plan

New York, US

8/13 Building Height

San Jose, US

'Trendi'-skenaario

Jyväskylä, Finland

Fremtidens Dikemark

Dinemark, Norway

Linking Past, Present and Future

Santa Monica, US

Otaniemi campus

Otaniemi campus, Finland

Denveright.

Your Voice. Our Future.

Share your voice!

Denver, US

[Back](#)

Login to Maptionnaire

If you have forgotten your password, [click here](#).

Username:
(*firstname.lastname*)

maartje.terveen

Password:

Log in



MAPTIONNAIRE USE CASES



10000 + PROJECTS

35 COUNTRIES

500k + PARTICIPANTS

10 MILLION RESPONSES

200 + CUSTOMERS



IDENTIFICATION OF VARIOUS PERSONAS IN TURKU

PRO-SUSTAINABLE URBANITES

23%



© Good studio / stock.adobe.com

TIME-CONSCIOUS SUBURBANITES

24%



© Good studio, Tartila / stock.adobe.com

MULTIMODAL PRICE-CONSCIOUS RESIDENTS

32%



10

AUTO-ORIENTED RESIDENTS

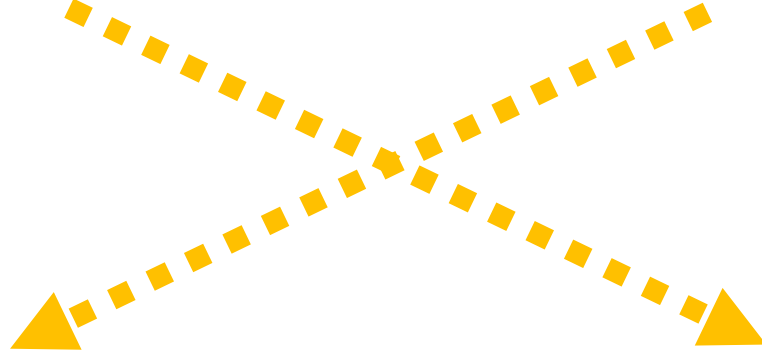
22%



© Good studio / stock.adobe.com

PERCEIVED HEALTH

PERCEIVED QUALITY OF LIFE



**PRO-SUSTAINABLE
URBANITES**

**MULTIMODAL
PRICE-CONSCIOUS
RESIDENTS**

**AUTO-
ORIENTED**

**TIME-CONSCIOUS
SUBURBANITES**



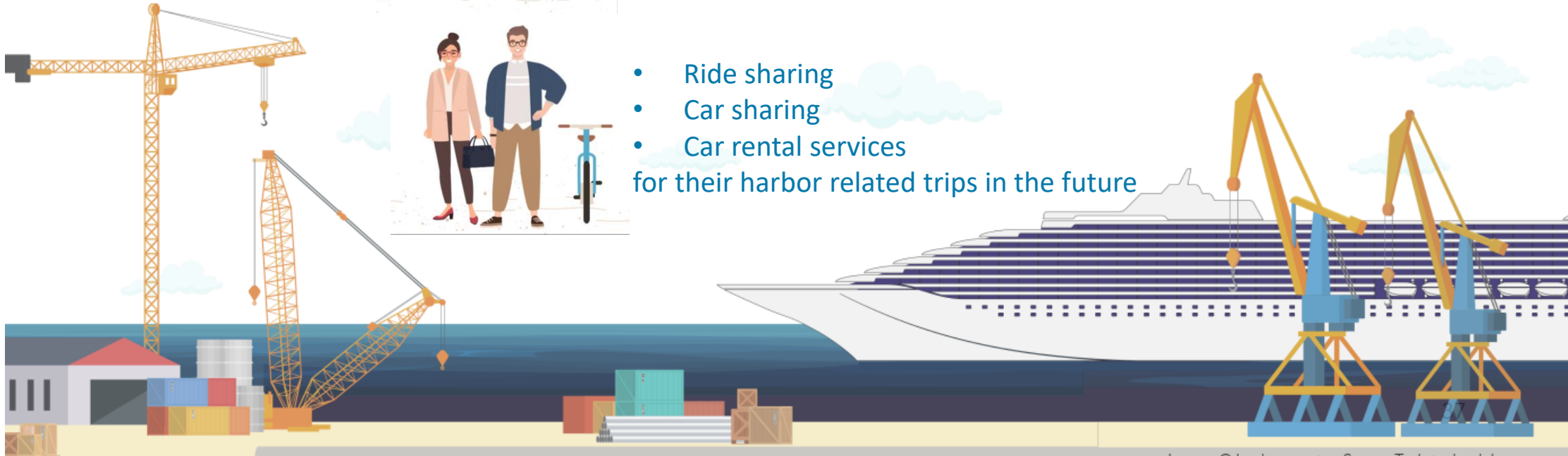
HOW ABOUT FUTURE MOBILITY TO TURKU HARBOUR? THE LIKELIHOOD FOR USING...



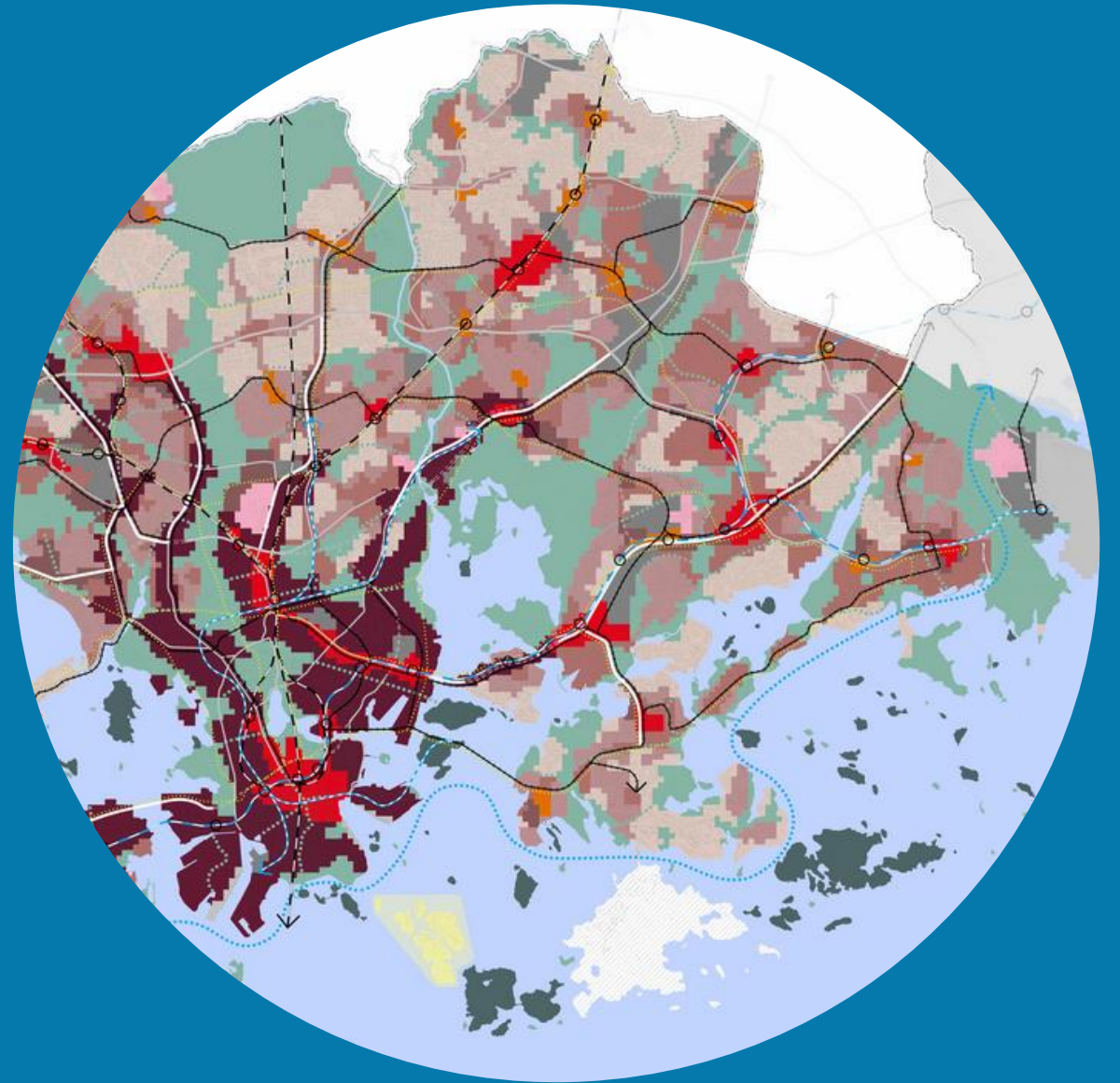
- Walking and cycling infrastructure
- Bike sharing
- Scooter sharing
- Electric bike services
- Improved transit services



- Ride sharing
 - Car sharing
 - Car rental services
- for their harbor related trips in the future



THE USE OF PPGIS IN REAL LIFE PUBLIC PARTICIPATION PROJECTS



PARTICIPATORY TRANSPORTATION PLANNING



Have your say
to improve
transportation

The purpose of this 15 minute survey is to gather feedback on how you move around New York City. Please take a few minutes to complete this survey and share where you go, how you travel and what you would do to make the system even better.

The part of the road network we would like your feedback on is shown on the map. The thick red lines show the areas we are focusing on.

The NZ Transport Agency is keen to hear from you about how you use SH1 and also the places and features you like and don't like.

Your response will help the NZ Transport Agency make decisions about what can be made to this section of SH1 in the future.

Two key points before you start the survey:

- you are free to withdraw from the survey at any time
- your answers will be stored securely and used for the purposes of this project

3/13 Street Right-of-Way Allocation

Please assign points to potential elements you would like to see into the street right-of-way along Winchester Boulevard. There are a total of 100 points to divide between the various elements. Elements with higher priority should receive more points than lower priorities. For example, if you think a protected bike lane is more important to you, then assign 20 points to each.






Street Element	0 / 100
Automobile traffic lane	<input type="text" value="0"/>
Parking lane	<input type="text" value="0"/>
Exclusive transit lane	<input type="text" value="0"/>
Protected bike lane/cycle track	<input type="text" value="0"/>
On-street bike lane	<input type="text" value="0"/>

Citywide Transit Plan

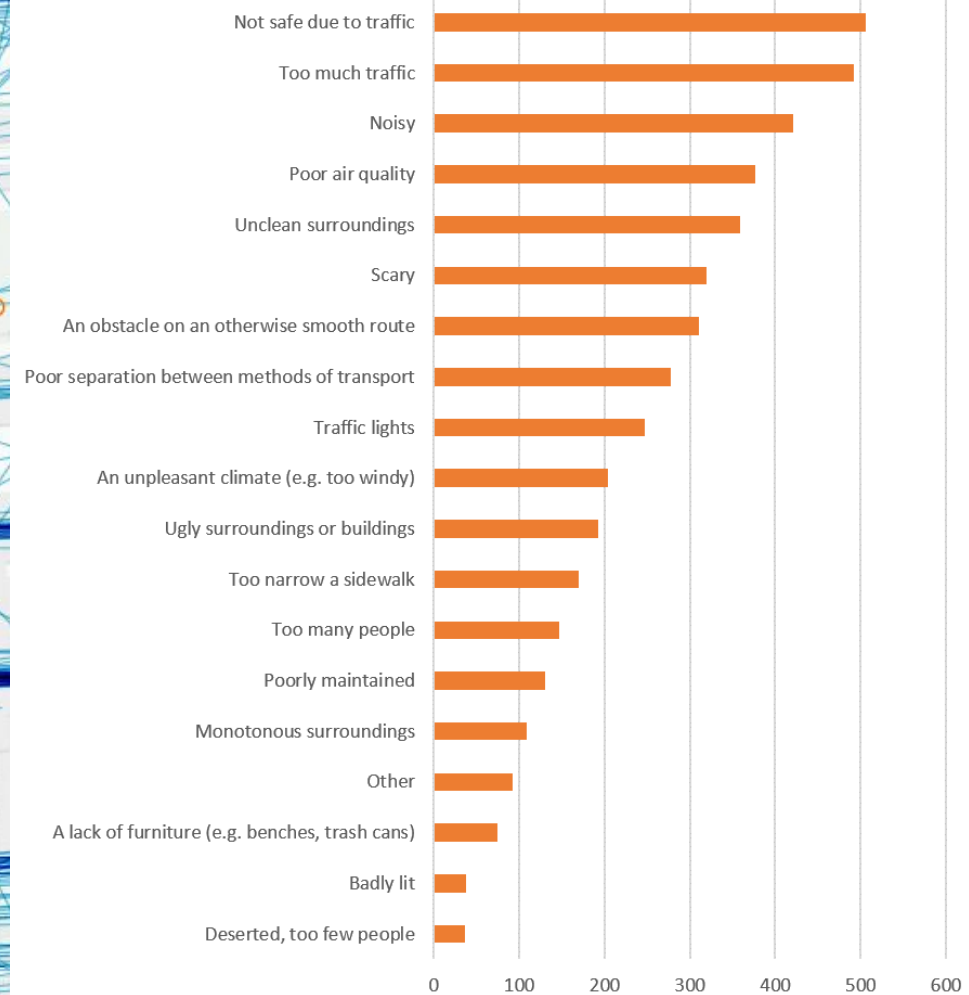
NYC DOT wants your feedback! We are surveying New Yorkers to get feedback on how you move around New York City. Please take a few minutes to complete this survey and share where you go, how you travel and what you would do to make the system even better.

[Español](#) [English](#)

Map showing the survey area in New York City, including areas like East Orange, Newark, Jersey City, Bayonne, Elizabeth, and Fort Lee. The survey area is highlighted in red on the map.

CITY OF HELSINKI: UNPLEASANT PLACES ALONG THE EVERYDAY ROUTES

1449 marked places on map



ROUTES THAT SHOULD BE IMPROVED

858 IDEAS AND COMMENTS
FROM THE PEOPLE

Less cars

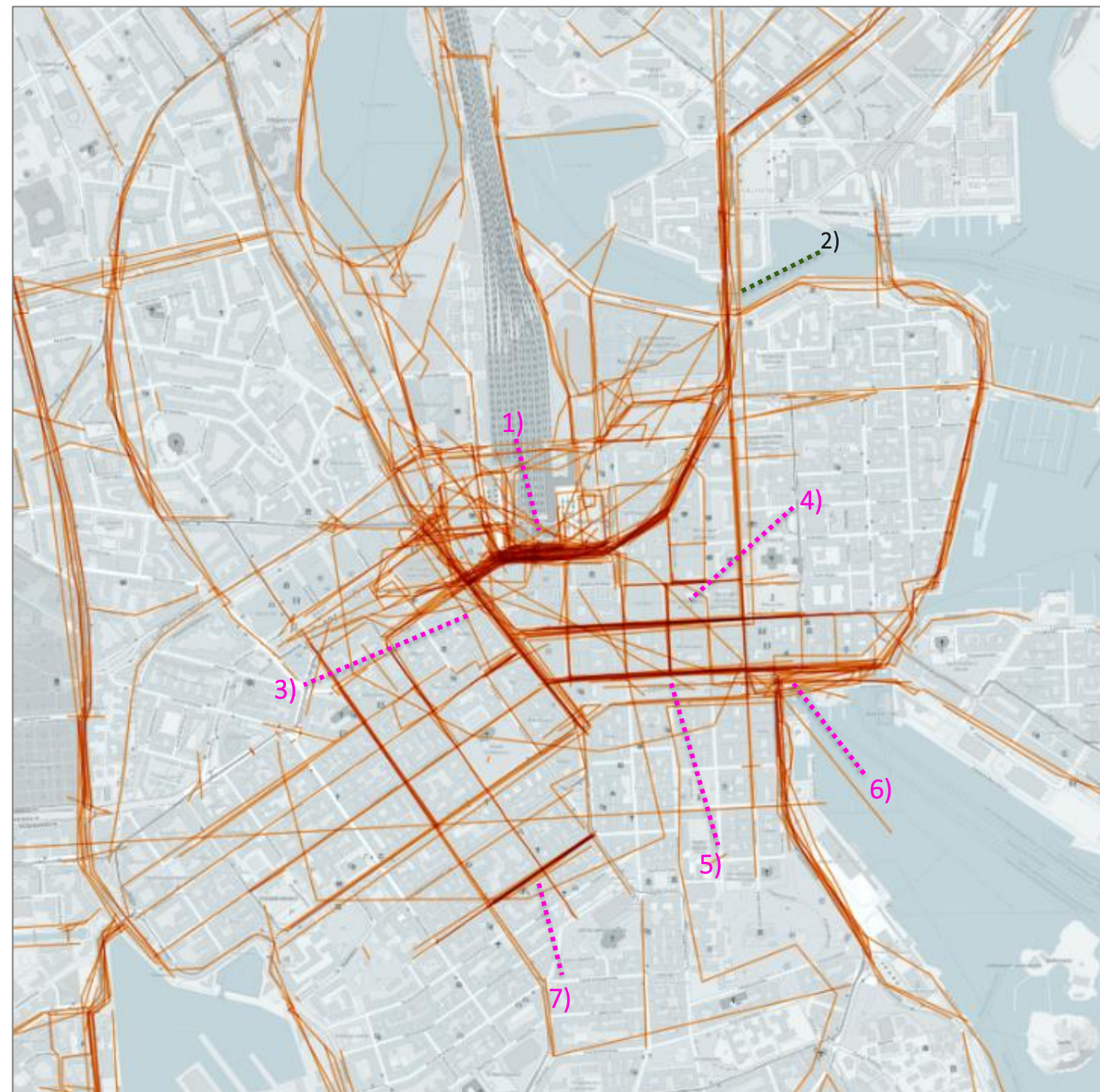
More plantings – trees and bushes

Better separation among the transport
modes

Shorter waiting time for pedestrians in
traffic lights

Broader pedestrian zones

Safer walking environment

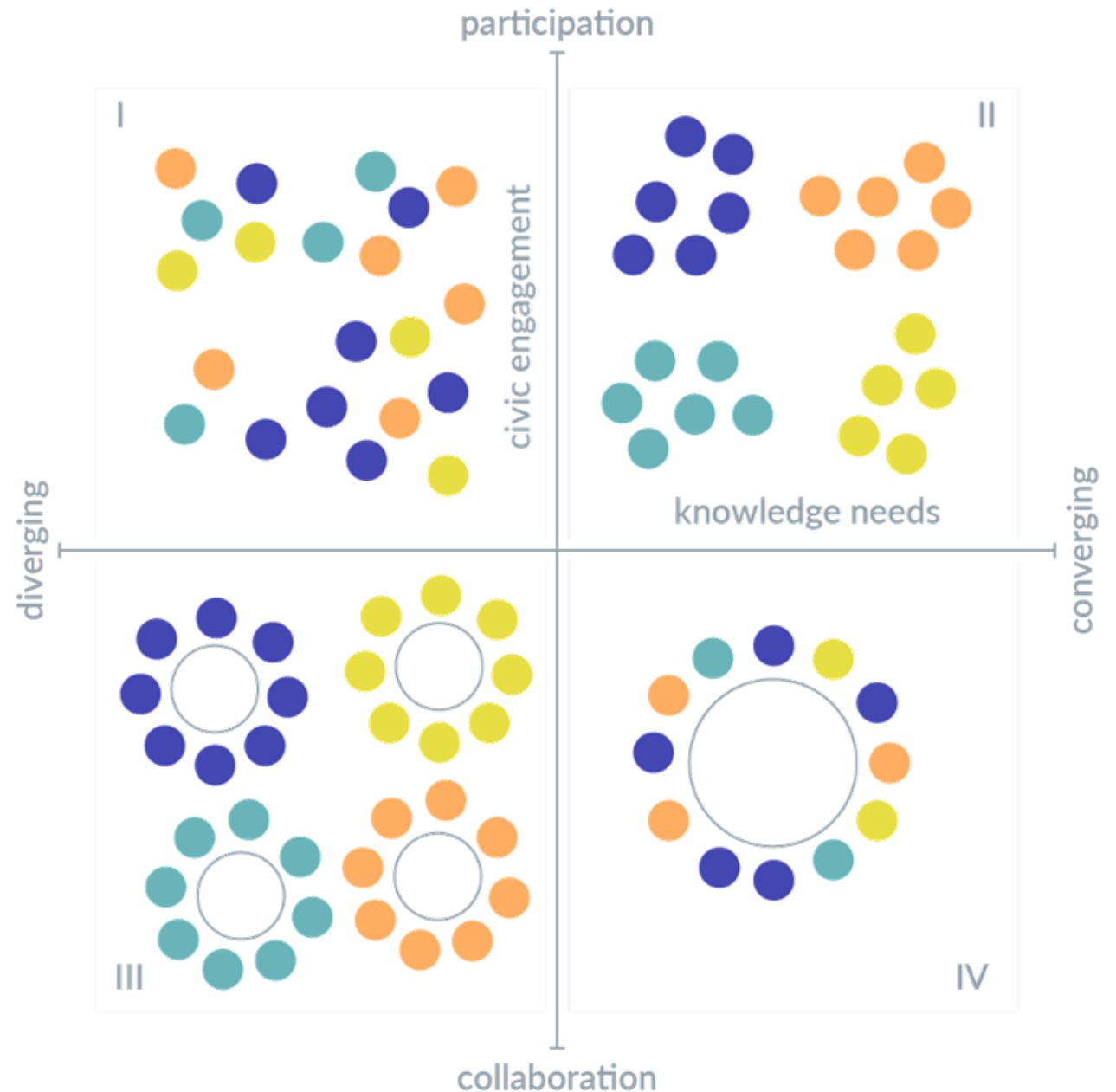


MORE USER CASES ...

Maptionnaire For Transportation & Mobility

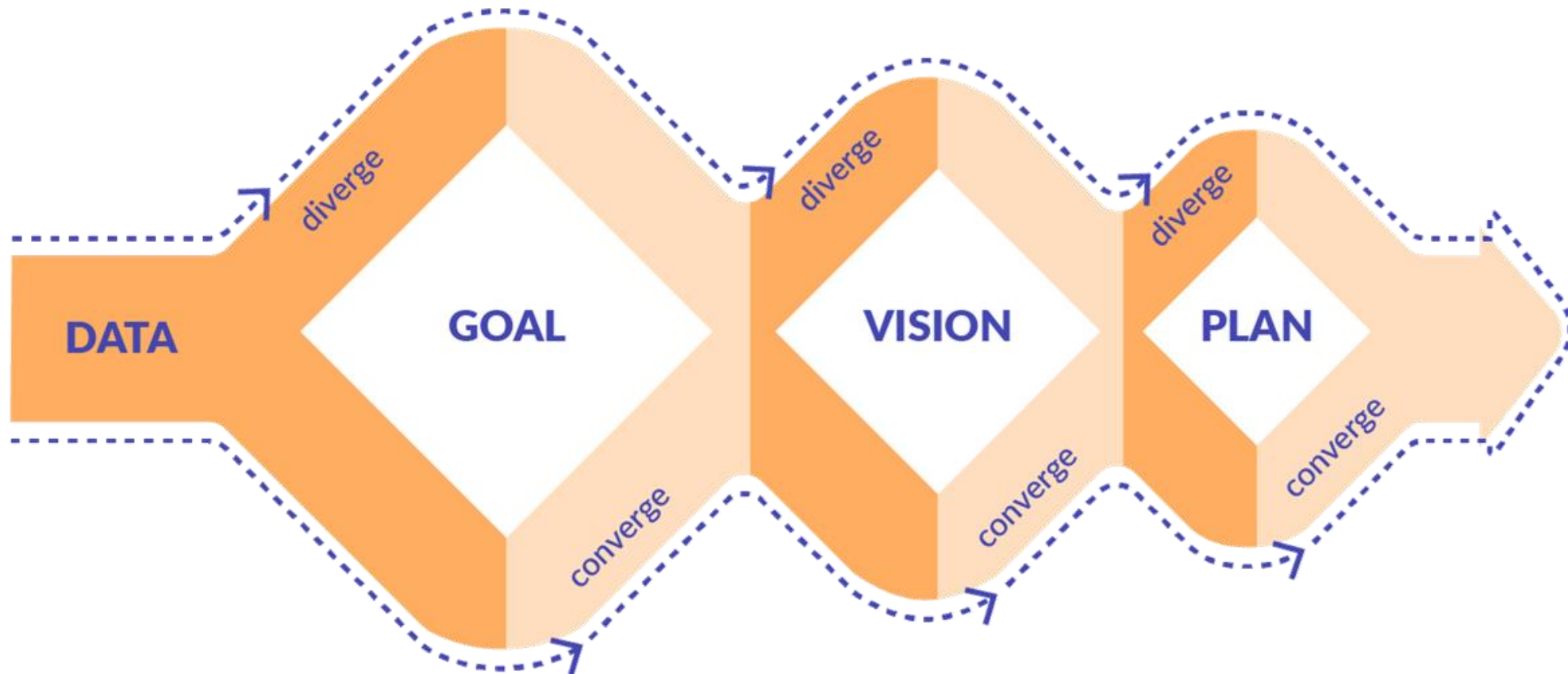


FOUR DIFFERENT TYPES OF COMMUNICATIVE ACTIONS IN URBAN PLANNING



Staffans, A. Kahila-Tani, M. & Kyttä, M. (2019) Participatory urban planning in the digital era. In Geertman, S. & Stillwell, J. (eds.) Handbook of Planning Support Science. Springer International Publishing.

THE FLOW OF COMMUNICATIVE ACTIONS IN DIFFERENT PHASES OF PLANNING PROCESS



A”

Aalto University



THANK
YOU!

marketta.kytta@aalto.fi