

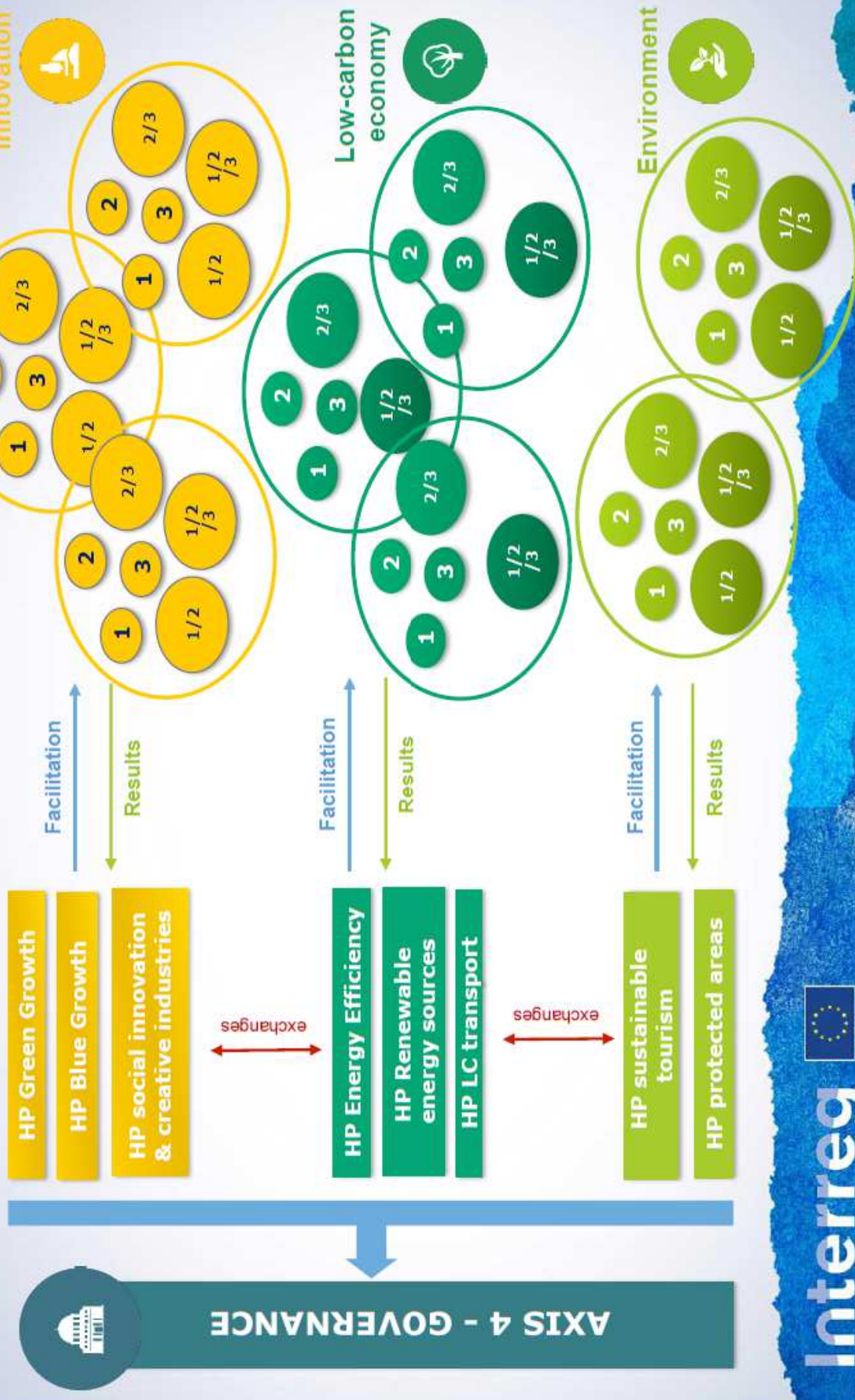
REMEDIO Experiences for COM&CAP events of Horizontal Projects and Programme

Session III: Communication

Francesca Liguori, HP contact person

ARPAV

Interreg MED Programme Architecture



Interreg
Mediterranean

<http://interreg-med.eu/thematics/urban-transport/>

URBAN TRANSPORTS



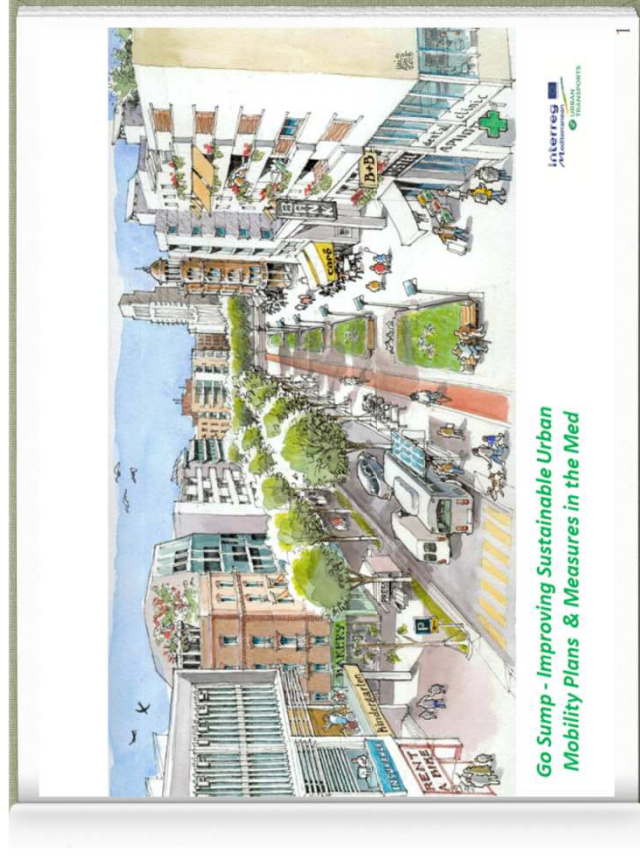
URBAN TRANSPORTS

INCREASING LOW CARBON URBAN TRANSPORT SYSTEMS

INCREASING LOW CARBON URBAN TRANSPORT SYSTEMS

Increase in population during touristic seasons is changing Mediterranean cities. They come unprepared and need to adapt to provide sustainable transit systems between the city centre, the port and the neighbourhood, while preserving their natural and cultural heritage, particularly their historical centres and social cohesion.

Projects co-financed under this thematic shall especially address issues related to the use and access to [low carbon transport](#) systems for the different categories of population and territories. Projects shall develop joint actions across MED countries directed to support public transport services for multimodal passengers (urban transport, rail/maritime/cruise).



MED THEMATIC COMMUNITIES

- ① **A single interface for:**
 - ① All projects within the same specific objective/theme
 - ① Programme authorities, as a centre for thematic information
 - ① Mediterranean governance platform Axis 4
- ① **Key objective - Design and implement methodologies for:**
 - ① Community building – transnational thematic communities
 - ① Common peer review platform to modular projects
 - ① Lobby /networking to promote/transfer results towards institutions and networks at Mediterranean/European level
 - ① Joint communication
 - ① Joint capitalisation/transfer

MP activities for the thematic community

- ✓ **Develop synergies** with other projects and within the thematic community (Partners participating to more projects)
- ✓ **Ensure constant communication** with the HP and within the community
- ✓ **Contribute to the development of the joint documents at thematic level**
- ✓ **Participation** to the thematic community events (all partners of MPs)
- ✓ **Contribute to the development of a joint calendar**
- ✓ **Share contents** for the HP and the Programme Web platform



Axis 2 – Low Carbon Economy

S.O. 2.1	To raise capacity for <u>better management of energy in Public Buildings at transnational level</u>	MEDNICE
Result Indicator	Share of <u>regional, subregional and local energy efficiency plans</u> including adapted measures for public building stock	
S.O. 2.2	To increase the share of renewable local energy sources in energy mix strategies and plans in specific MED territories.	
Result Indicator	Share of <u>renewable energy from local sources in energy mix of MED islands and rural areas.</u>	GREENCAP
S.O. 2.3	To increase capacity to use existing low carbon transport systems and multimodal connections among them	
Result Indicator	Share of urban plans including low carbon transport and multimodal connection soft actions	GO SUMP

6 Projects
61 Partners
12 Countries





What do we expect from the Urban Transports thematic community?

- MPs as main actors of the community
 - Keep being engaging/engaged
- Make the most of the community actions
 - Be open to suggestions and feedback/be willing to give suggestions and feedback
- Dissemination of knowledge at territorial level
 - MED area as a whole – not a local action
- Enlargement of knowledge / experience in Urban Transports practices
- Development of strategies in Urban Transports policies and practices
- Lobbying/networking activities for all the results



Planning measures

Sustainable Mobility Plans -examples of specific activities

	MOBILITAS	REMEDIO	MOTIVATE	CAMP	SUMP	LOCATIONS	SUMPS
CAPACITY BUILDING						Operational model. Capacity building manual.	
PARTICIPATORY APPROACH		Participatory governance entity.	Social media / Crowdsourcing tools.				
DIAGNOSIS (data collection)	Software (tourist facilities).		Social media / Crowdsourcing tools.				
PROBLEM IDENTIFICATION			Social media / Crowdsourcing tools.				
SOLUTION PROPOSAL		Integrated modelling tool (#impacts).	Social media / Crowdsourcing tools.	Action Plan: Road map. ICT model.			
EVALUATION& MONITORING		Integrated modelling tool (#impacts).	Social media / Crowdsourcing tools.			Evaluation package.	

Pilot actions -examples-

	MOBILITAS	REMEDIO	MOTIVATE	CAMPSUMP	LOCATIONS	SUMPORT
BICYCLE	e-Bikesharing.	e-Bikesharing. Bike parking.				e-Bikesharing. Bike lane network. Bus&Bike parking.
BUS	Web/APP. e-Buses. Free shuttle buses	Bus Rapid Transit. Bus stops (safety).				GPS + APP. Bus&Bike parking.
CAR	e-Carsharing.					Carpooling.
PARKING			Parking control system.			Parking control system.
IT TOOLS (APPS, etc.)			Info LCT services. Personalized Sustainable Travel Plans.			



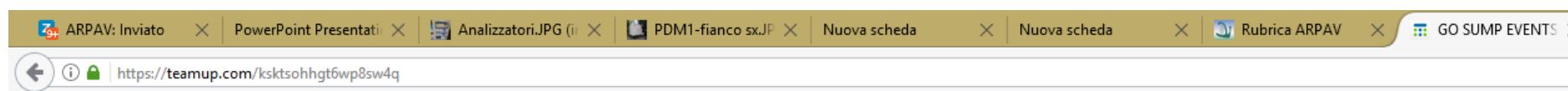
Thematic community - Low Carbon Transport																		
Sub themes																		
Corresponding Modular project	CAMPUSUMP			LOCATIONS			MOBILITAS			MOTIVATE			REMEDIQ			SUPPORT		
Type of Module	M 1			M 2 + 3			M 2			M 2			M 2			M 2		
M1 - Study	Core deliverables	Key Elements		Core deliverables	Key Elements		Core deliverables	Key Elements		Core deliverables	Key Elements		Core deliverables	Key Elements		Core deliverables	Key Elements	
Geographic Relevance			Geographic Relevance			Geographic Relevance			Geographic Relevance			Geographic Relevance			Geographic Relevance			
Western MED	Ionian Adriatic	Eastern MED	Western MED	Ionian Adriatic	Eastern MED	Western MED	Ionian Adriatic	Eastern MED	Western MED	Ionian Adriatic	Eastern MED	Western MED	Ionian Adriatic	Eastern MED	Western MED	Ionian Adriatic	Eastern MED	
M2 - Test	Core deliverables	Key Elements		Core deliverables	Key Elements		Core deliverables	Key Elements		Core deliverables	Key Elements		Core deliverables	Key Elements		Core deliverables	Key Elements	
													Customized modelling tool to evaluate transport energy and environmental related performances of low carbon actions to be implemented	Multidisciplinarity, joint implementation, scenario approach				
													Low carbon mobility plans for the transferring of the best implementation scenario in the pilot roads/areas of high congested traffic	policy makers commitments, multilevel governance authorities				
													Participatory governance model to foster urban low carbon transport solution and the "horizontal condominium" implementation	stakeholders engagement, synergies with SEPA and Climate adaptation, capacity building, awareness raising				
Geographic Relevance			Geographic Relevance			Geographic Relevance			Geographic Relevance			Geographic Relevance			Geographic Relevance			
Western MED	Ionian Adriatic	Eastern MED	Western MED	Ionian Adriatic	Eastern MED	Western MED	Ionian Adriatic	Eastern MED	Western MED	Ionian Adriatic	Eastern MED	Western MED	Ionian Adriatic	Eastern MED	Western MED	Ionian Adriatic	Eastern MED	
M3 - Capitalisation	Core deliverables	Key Elements		Core deliverables	Key Elements		Core deliverables	Key Elements		Core deliverables	Key Elements		Core deliverables	Key Elements		Core deliverables	Key Elements	
Geographic Relevance			Geographic Relevance			Geographic Relevance			Geographic Relevance			Geographic Relevance			Geographic Relevance			
Western MED	Ionian Adriatic	Eastern MED	Western MED	Ionian Adriatic	Eastern MED	Western MED	Ionian Adriatic	Eastern MED	Western MED	Ionian Adriatic	Eastern MED	Western MED	Ionian Adriatic	Eastern MED	Western MED	Ionian Adriatic	Eastern MED	

REMEDI		
M 2		
Core deliverables	Key Elements	
Customized modelling tool to evaluate transport, energy and environmental related performances of low-carbon actions to be implemented	Multidisciplinarity, joint implementation, scenario approach	
Low-carbon mobility plans for the transferring of the best implementation scenario in the pilot roads/areas of high congested traffic	policy makers commitments, multilevel governance authorothies	
Participatory governance model to foster urban low carbon transport solution and the "horizontal condominium" implementation	stakeholders engagment, synergies with SEPA and Climate adaptation, capacity building, awareness raising	
Geographic Relevance		
Western MED	Ionian Adriatic	Eastern MED

<https://teamup.com/ksktsohhgt6wp8sw4q>



<https://teamup.com/ksktsohhgt6wp8sw4q>



teamup GO SUMP EVENTS CALENDAR. HORIZONTAL AND MODULAR PROJECTS. Interreg Med

May 2018 < > << >> Today 15 May 2018 - 14 May 2019

M	T	W	T	F	S	S
30	1	2	3	4	5	6
7	8	9	10	11	12	13
14	15	16	17	18	19	20
21	22	23	24	25	26	27
28	29	30	31	1	2	3
4	5	6	7	8	9	10

Date range: One year Group by: None Details: [+ Add event](#)

Date	Time	Event
Mon 2 Jul	All day	TRAINING COURSE FOR REPLICATING ORGANISATIONS AND MUTUAL LEARNING WORKSHOP - LISBON (LOCATIONS)
Sun 8 Jul	All day	SUMP TRAINING EVENT - IGOUENITSA (SUMPORT)
Mon 3 Sep	All day	COMMUNITY WEBINAR - TBC (MALAGA CITY COUNCIL)
Tue 4 Sep	All day	GO SUMP EXPERT MEETING 2 - TBC (EUROCITIES)
Mon 1 Oct	All day	WORKSHOPS - MALAGA (MALAGA CITY COUNCIL)
Tue 2 Oct	All day	EUROCITIES MOBILITY FORUM - TBC (EUROCITIES)
Wed 3 Oct	All day	EUROCITIES ANNUAL CONFERENCE - TBC (EUROCITIES)

All Calendars

- Central Region Events
- East Region Events
- EXTERNAL EVENTS
- West Region Events

[+ Add / Edit](#)

Filter

About

If you are new to this calendar, please check out

Synergies found with other MPs of LCC (1/1)

	REMEDIO
LOCATIONS	1. Geographical proximity between LOCATIONS and REMEDIO territories:
	Zadar → Split
	Lisboa → Loures
	Trieste → Treviso
	2. The Cruise transport theme developed in LOCATIONS as a thematic already studied in by the AUTH PP of REMEDIO for Thessaloniki (see the previous project MED-CAIMANs) and a common issue for Split.
SUMPORT	1. Similar pilot actions on bike sharing 2. PPs overlapping with AUTH 3. Port thematic interesting for REMEDIO cities of Split and Thessaloniki
CAMPSUMP	1. Geographical overlapping between LOCATIONS and REMEDIO territories:
	Split
	2. Some REMEDIO PPs are Universities:
	USE in Seville AUTH in Thessaloniki

Synergies found with other MPs of LCC (2/2)

	REMEDIO
MOTIVATE	1. MOTIVATE develops a platform that could be interesting in respect to the FIREWAR platform used in the Integrated Modelling Tool of REMEDIO
	2. The citizens and tourists involvement by MOTIVATE is interesting as a participative approach that might be confronted to that of REMEDIO for the “horizontal condominium” engagement of citizens and
	3. The seasonal demand by tourism faced in MOTIVATE is a common issues of some REMEDIO cities
	4. Geographical proximity between MOTVATE and REMEDIO territories:
	Dubrovnik → Split Almada → Loures
MOBILITAS	1. Geographical proximity between MOBILITAS and REMEDIO territories:
	Zadar and Dubrovnik → Split
	Venice (IUAV) → Treviso
	2. Modelling Tool 3. Scenario analysis

Work in progress

if any additional information arrive from GO-SUMP or Alicante meeting