

REMEDI small scale interventions

Session 1:

LOW CARBON TRANSPORT MODES / SERVICES

Sub-Session: Physical solutions / infrastructure
related to sustainable means of transport

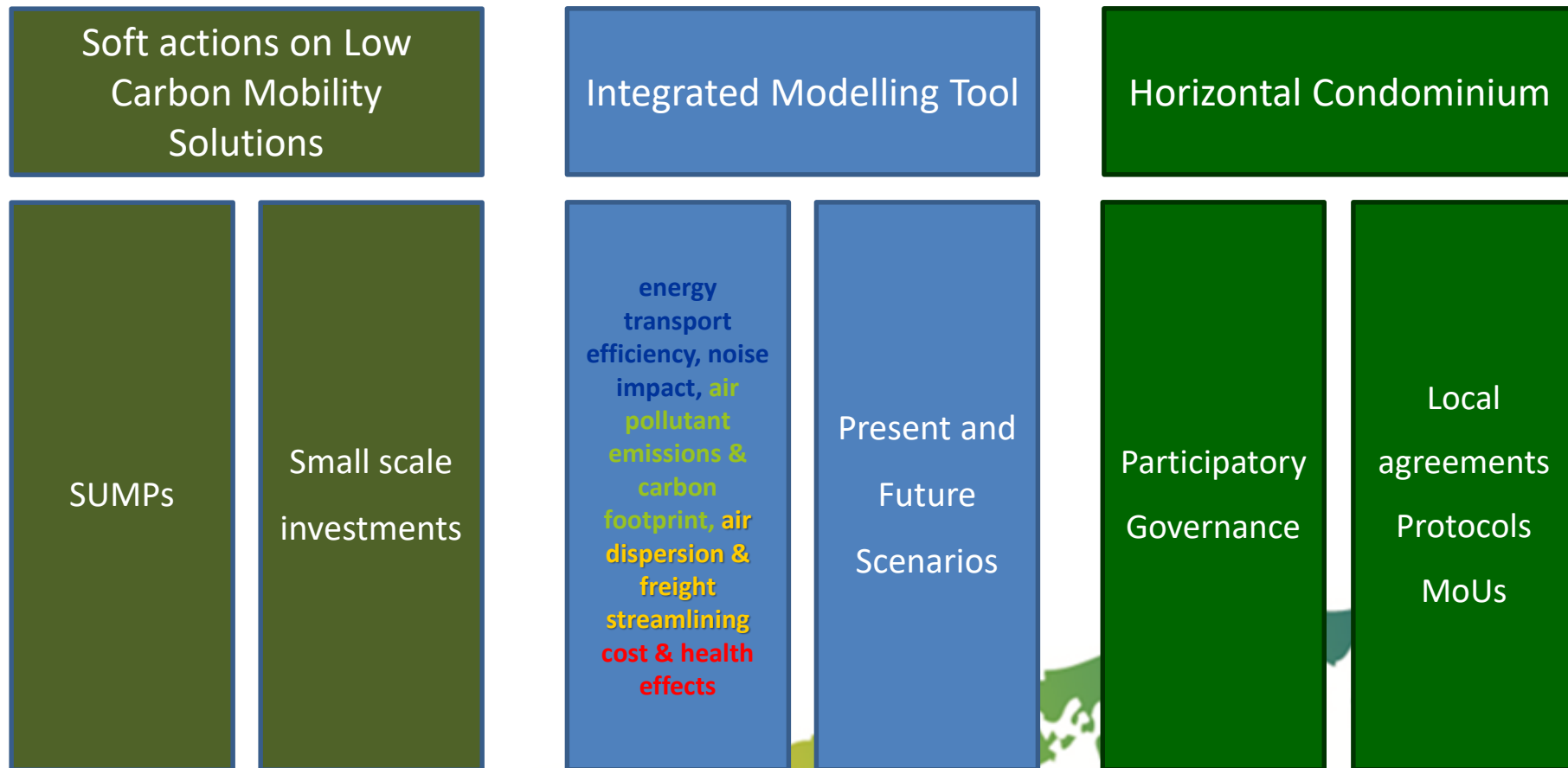
REMEDI territorial PPs: P. Pierobon¹, S. Zountsa², I. Bandalo³, Fernando Noivo⁴,

LP and Scientific coordination: Francesca Liguori⁵

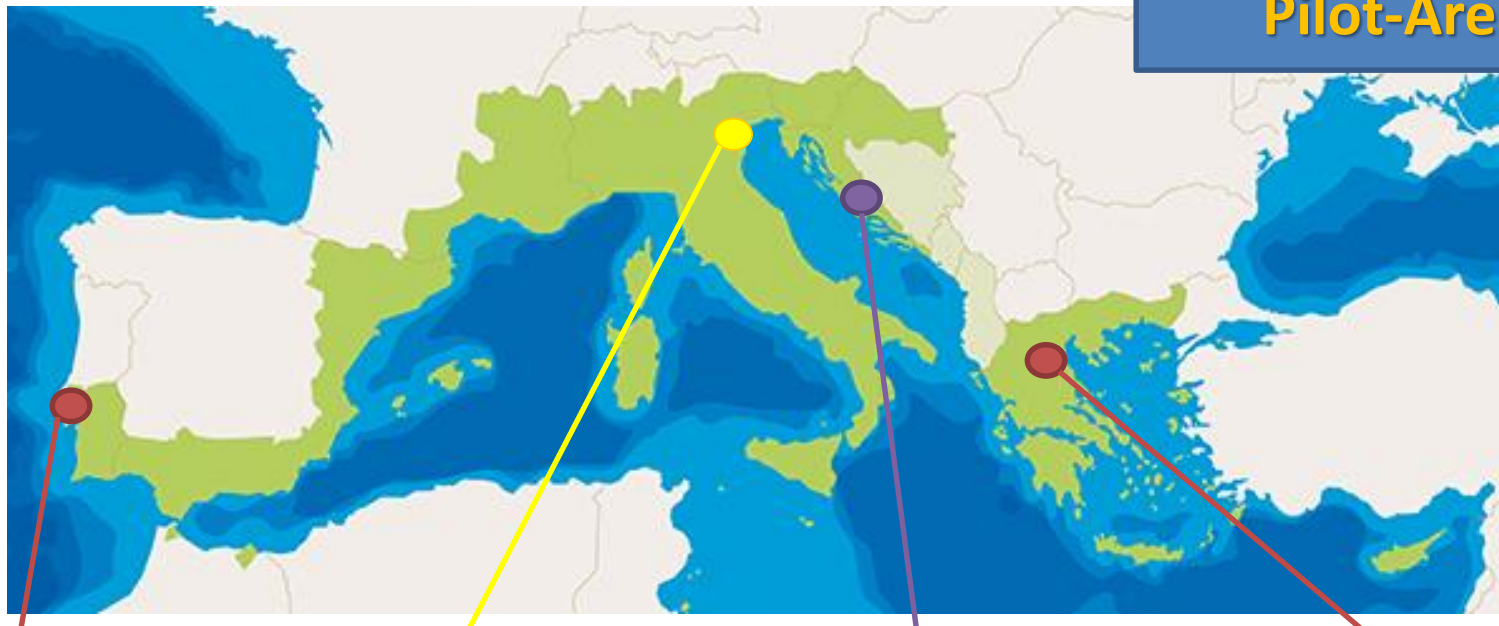
[1]Municipality of Treviso, [2]Metropolitan Development Agency of Thessaloniki,

[3]City of Split, [4]Municipality of Loures, [5]ARPA Veneto

REMEDIO's testing approach in 3 steps



REMEDIO Pilot-Areas



Loures

158 km²
205'000
inhabitants

Treviso

56 km²
84'500
inhabitants

Split

79 km²
179'000
inhabitants

Thessaloniki

1,455 km²
1'110'312
inhabitants



ARPA Veneto



Instituto
Superior
Tecnico



Municipality
of Loures



City of Split



Metropolitan
Development
Agency of
Thessaloniki



Municipality
of Treviso

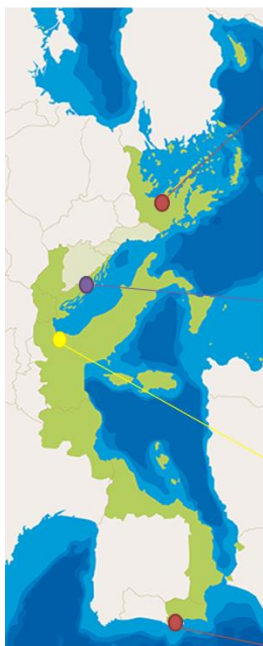


Aristotle
University
of Thessaloniki



University
of Seville

REMEDIO Small scale investments



Thessaloniki

Split

Treviso

Loures

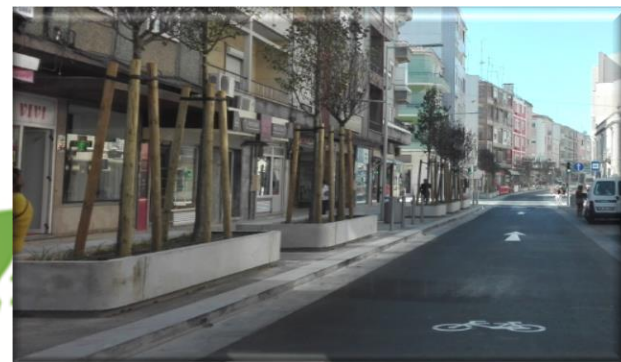
— redesign of the major penetration axis with a 2nd generation bus lane & green-taxiway

— mixed *e-bike* sharing network

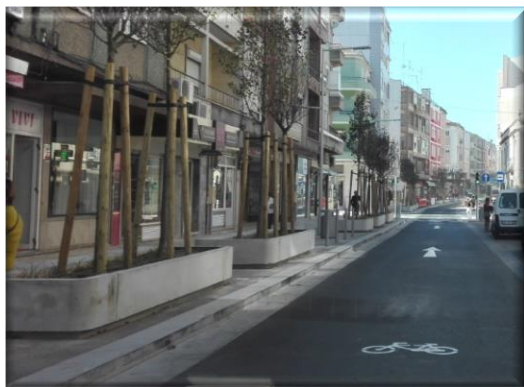
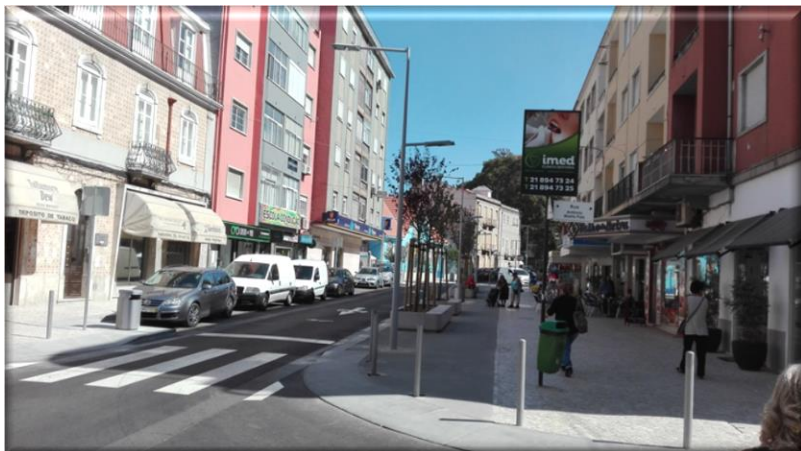
— Bike sharing network serving the pilot road

— renewal of a urban street toward an upgraded pedestrian and cycling profile of the area

Soft actions on Low
Carbon Mobility
Solutions



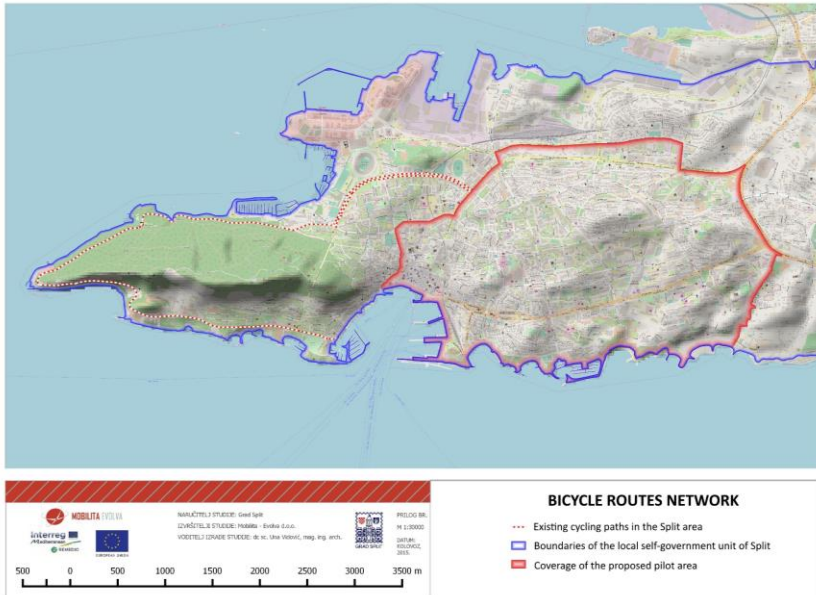
Renewal of Moscavide street with upgrading of the
pedestrian and cycling profile of the street



Executive design of the mixed
electric and traditional bike sharing
service well advanced

Split

City center and
its surroundings



Treviso

West Road

Bike sharing project in REMEDIO:

9 stations

50 bikes

Users: citizens

Location: along the West Road – pilot area

Status: supply for the installation assigned

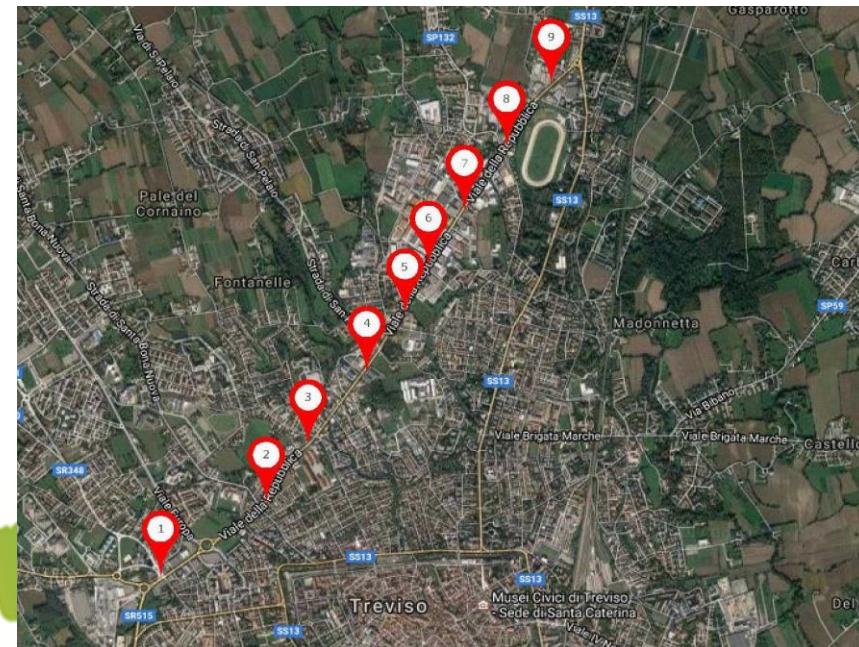
Bike sharing today:

22 stations

120 bikes

Users: citizens

Located: mainly in the historical city center



Thanks to REMEDIO
Treviso = 20 bikes/ 10'000 inhabitants

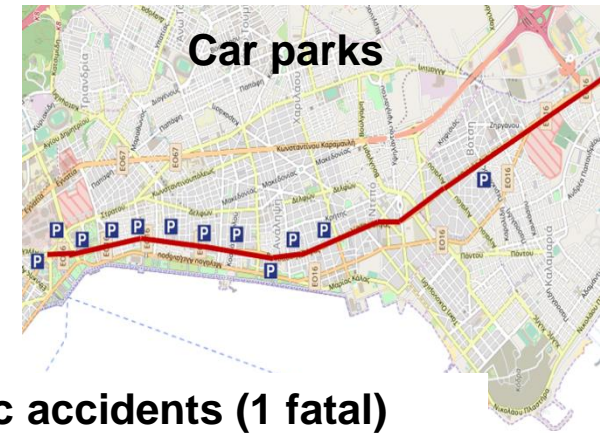
The road axis characteristics



Taxi stops



**Loading and unloading
spaces**



Car parks

**Intensive illegal and
double parking**



**60 traffic accidents (1 fatal)
recorded on average every year**

Year	Total	Fatal	inv. pedestrian(s)	Injured		
				Dead	Heavily	Wounded
2010	54	2	14	2	2	61
2011	66	2	23	3	4	75
2012	60	0	18	0	2	65
2013	52	1	12	1	1	61
2014	57	1	16	1	0	67
2015	62	1	12	1	1	69
2016	60	1	13	1	3	78

By all REMEDI partners



ARPA Veneto



Instituto
Superior
Tecnico



Municipality
of Loures



City of Split



Metropolitan
Development
Agency of
Thessaloniki
S.A



Municipality
of Treviso



Aristotle
University
of Thessaloniki



University
of Seville

Follow and Join **REMEDI**



/remediomed



remedio.interreg-med.eu/



remedio-med@ctn.tecnico.ulisboa.pt