



Interreg
CENTRAL EUROPE

SENTINEL

PP NAME:

PP_6: RZESZOW REGIONAL DEVELOPMENT AGENCY

PP_7: REGIONAL CENTER OF SOCIAL ASSISTANCE IN RZESZOW

NAME OF TERRITORY: PODKARPACKIE REGION

ANALYSIS OF EXISTING SE SUPPORT SERVICES AND SE NETWORKING INITIATIVES IN PP COUNTRY

DELIVERABLE: D.T1.1.2

AUTHOR: PP_6 AND PP_7

Table of Content

1.	Social economy in the strategic documents of the Podkarpackie Voivodship.....	3
2.	Socio-economic situation of the voivodship	4
3.	Support services for social enterprises	7
3.1	Support for establishment of enterprises.....	10
3.2	Support services for young entrepreneurs and women	12
3.3	Training and skills development	15
3.4	Innovation	16
3.5	Internationalization	16
3.6	Other support.....	17
4.	Networking – Initiatives.....	18
4.1	Representation of regional social enterprises.....	18
4.2	Network activities	19
4.3	Experiences exchange	21
5.	Good practice example – networking.....	23
6.	Good practice example – support.....	27
7.	Conclusions from the diagnosis	30
8.	Executive summary	31
	Sources:	34

1. **Social economy in the strategic documents of the Podkarpackie Voivodship.**

- "Regional Action Plan for the Development of Social Economy in the Podkarpackie Region 2012-2020" (RPDRES) is the first such document operating in the Podkarpackie Region. It was established in February 2016 by the resolution of the Podkarpackie Voivodship Board, the Podkarpackie Committee for the Development of Social Economy RPDRES transformed in 2016 into the "Podkarpackie Development Program for Social Economy".
- "Development Strategy for the Podkarpackie Voivodship 2020". Social economy penetrates all strategic areas as well as objectives and priorities. Especially it is contained in the second aim of the project, what is: "Development of human and social capital as factors of regional innovation and improvement of the standard of population living", with particular emphasis on thematic priorities such as 2.1. Education, 2.3. Civil Society, 2.4. Social inclusion, 2.5. Public health.
- "Regional Innovation Strategy for the Podkarpackie Region 2014-2020, for smart specialization (RIS3)". The vision and mission of this project is consistent with the field of social economy. Social economy is particularly focused on the priority "Smart, and Sustainable Development" and the II Strategic Objective of Intelligent Specialization Quality of Life: "Development of the Podkarpackie Region as the region with the highest quality of life. Energetic safety. Security and food sovereignty".
- The issues of social economy also are included in the programs adopted for implementation at the self-government level in the Podkarpackie Voivodship, such as "Provincial Social Welfare Program 2016-2023". This program contains a strategic objective, what was defined as increasing of the effectiveness of the aid and integration system in the voivodship and additional operational objectives: 1 – limiting of the phenomenon of social exclusion in the voivodship, 2 - supporting of families in the implementation of care and education; 3 - increasing and developing of the offer of social assistance for seniors; 4 - the development of social assistance infrastructure; 5 – improving of the professional competence of social workers and social welfare workers 18. Within the framework of individual operational objectives detailed actions are planned and that might be the starting point for raising funds by social economy entities and social enterprises from our voivodship.

These documents are also consistent with the objectives and actions of other voivodeship programs:

- The Provincial Program for Drug Prevention 2012-2016,
- The Provincial Program for Prevention and Alcohol Problem Solving 2014-2020,
- Provincial Program for the Equalization of Opportunities for People with Disabilities 2008 - 2020,
- the Provincial Family Support Program and the Replacement Cattle Program 2014-2020.
- Provincial Violence Prevention Program 2014-2020

2. Socio-economic situation of the voivodship

The Podkarpackie Voivodship covers an area of 17 846 km², which represents 5.7% of the whole Poland area. The area consists of 21 lands districts and 4 towns. In total there are 160 municipalities: 16 urban, 35 urban-rural and 109 rural. 51 municipalities have the civic rights. The capital of the voivodship and the main administrative and economic center is Rzeszow. The Podkarpackie Voivodship is located in south-eastern Poland. It borders with Slovakia at the stretch of 134 km long and with Ukraine at the stretch with 239 km long. According to statistics, prepared in 2016, the province was inhabited by 2,126,824 people, 1,085,395 women and 1,041,429 men in this sum, representing about 5.5% of the whole country population. There were about 41,8% of the inhabitants in the cities.

Podkarpackie Voivodship is characterized by an average level of economic development, with a small impact on the gross domestic product in the whole country. According to the Central Statistical Office, the value of GDP for the Podkarpackie Voivodship in 2015 amounted to 70 307 million PLN. This is the 10th place among all voivodships in the country (the total number of voivodships in Poland is 16), and in percentage terms Podkarpacie's GDP is 3.9% of the GDP in the whole country. Taking into account the GDP per capita of Podkarpacie with a value of 33 050 PLN at the end of 2015 it is the penultimate, it is the 15th among all voivodships in the country. Podkarpackie GDP per capita is 70.7% of the national average.

At the end of December 2016 registered unemployment rate for the Podkarpackie voivodship was 11.5% and was higher than the unemployment rate for Poland (8.2%) by 3.3 pp. what places Podkarpackie Voivodship at the 14th place among all voivodships in the country.

The table below shows the unemployment rate in the individual counties of the Podkarpackie Voivodship.

Counties	UNEMPLOYMENT RATE
	31 December 2016
Voivodship	11,6
Bieszczady	18,2
Brzozow	18,9
Debica	9,4
Jaroslaw	14,7
Jaslo	13,4
Kolbuszowa	11,6
Krosno	10,3
Lesko	20,3
Lezajsk	15,7
Lubaczow	12,0
Lancut	14,5
Mielec	7,6
Nisko	19,3
Przemysl	16,7
Przeworsk	15,8
Ropczycko-sedziszowski district	13,3
Rzeszow	11,0

Sanok	9,1
Stalowa Wola	7,1
Strzyzow	18,0
Tarnobrzeg	10,2
Krosno	4,7
Przemysl	14,0
Rzeszow	6,8
Tarnobrzeg	11,8

- Local Data Bank www.stat.gov.pl

The largest part in the gross value added (WDB) of the voivodship is recorded in the following terms: broadly trade (29.46%), followed by industry (27.02%) and services (25.8%). Also the construction industry (8.28%) is significant, what is traditionally recognized in the Podkarpacie Region as one of the most important sectors of the economy. A bit more than 7% of the WDB generates financial and insurance business. Agriculture, forestry, hunting and fishing occupy the last place among the sections constituting the WDB of the Podkarpackie Voivodship. Still, this is a sector of the economy significant due to the large area of farmlands.

CAPABILITY:

Industry:

Podkarpacie is characterized by a diversified branch structure of Polish industry (industry: aerospace, electromechanical, chemical and food industries, producing almost 70% of industrial output in the voivodship), innovative industry: and the share of private financing of R & D works (0.25% of GDP, is placed on the 3rd place in the country), a strong concentration of research in a branch of technical sciences. (5)

The aviation industry ("Aviation Valley", "Avia-SPLot" and "Light and Ultralight Aviation") takes a particular role in the structure of the industry and the high technology industry, together with IT services. Information technology in the region is also connected to the presence of Asseco Poland, the largest IT company in Poland. This trend is driven by the aviation industry's tradition in the region, a strong academic center providing technical staff and a high level of dynamics in the IT industry. The IT industry becomes more and more powerful and will be a very important factor for the development of the region. Apart from short-term economic turmoil, it is possible to assume that the development of an aviation industry is rather unprotected trend and that the dynamics of demands for aviation products can be expected to increase. The role of the aerospace industry in the region is as follows:

- 90% of the national aviation industry's potential is concentrated in the Aviation Valley
- Investments in the Air Valley in the last decade amounted more over \$ 1.5 billion
- Aerial products made in the Podkarpackie Voivodship are assembled in the most famous passenger and military aircraft brands;
- A dynamic growth of employment in regional airline companies is expected;
- Production connected to light and ultralight aviation is developing in the region
- Aviation industry is supported by the education and higher education system and specialized research units (primarily in the structure of the Rzeszów University of Technology) (3)

Among the assets of the region there are also the industrial and technological parks and the Special Economic Zones. Aeropolis Science and Technology Park (PPNT) is the first Polish industrial park. Its foundation in 2003 was dictated by the desire to uphold the traditions of the aviation industry in the region, the use of well-educated personnel in this direction, and to catch the attraction of innovative external investors.

Special Economic Zones: the oldest one in Poland (SEZ Euro-Park Mielec) and SSE Euro-Park Wisłosan in Tarnobrzeg , the zones are located in different parts of the voivodship. They create favorable conditions for doing business for European and international companies and that makes the Podkarpackie Voivodship an attractive place for investors. (5)

The best strengths of the region are human resources. Podkarpackie is characterized as relatively young community, a high natural growth rate (although it has been systematically decreasing in recent years) and a favorable amount of people at the productive age in the population structure.

The province is also characterized with a higher proportion of educated population at all levels of education (26%, compared to 23% in Poland). Higher education is run by 18 independent colleges. It is concentrated in Rzeszow, where 75% of the youths from voivodship are studying. The academic potential of the voivodship is primarily formed by four universities: the Rzeszów University of Technology, the Rzeszów University, the University of Law and Administration and the College of Informatics and Management. The province is also characterized with higher than average national popularity index of technical majors, which are highly appreciated by air specialists (eg unique offer of training civil pilots). (5)

Tourism:

The diversity of cultural heritage has created a cultural value that is incomparable with other regions of Poland, existing on the basis of attractive tourist environment. The Polish Carpathian mountains are undoubtedly regarded as the pearl of the Podkarpackie Region: the Bieszczady mountains and the Beskid Niski. Large landscape values are attributed to the foothills: Strzyżowski, Dynowsk and Przemyśl. The northern part of the voivodship, ie Kotlina Sandomierska and adjacent to it from the east Roztocze, that are rich with cultural monuments.

The natural and cultural potential shapes the possibilities of tourism and recreation development, and the nature of natural conditions determines to a large extent of the development of the agro-forestry sector. According to the synthetic indicator of natural and cultural potential, Podkarpackie voivodship occupies 2nd place in the country. This the high percentage of protected areas (including two national parks - Bieszczady and Magura) and high forest cover, as well as socio-cultural activity of the inhabitants. The highest natural and cultural potential is the mountainous areas and the north-eastern part of the region. Natural and landscape values, richness of flora and fauna, cultural monuments and a relatively clean environment, as well as the presence of mineral water sources, enable the development of spa treatment in the form of health resorts. It can be stated that the natural-cultural potential of the Podkarpackie Voivodship is the largest intangible resource in the region. (3 and 5)

The most important natural values of the Podkarpackie Voivodship are:

- Bieszczady
- Low Beskid
- Strzyzow-Dynow foothills
- Słonne Mountains (part of the Sanocko-Turcians)

- Roztocze
- Sandomierz Forest
- Spa bonds (mineral and thermal waters: in Iwonicz Zdrój, Rymanów Zdroj, Horyniec Zdrój, Polanczyk)
- rivers: San, Wiar, Wisłok, Tanew and lagoons: Solinski and Myczkowski and many other retention tanks
- wildlife of nature
- oil fields, cradle of oil industry
- clean, unpolluted environment
- Natural protected areas (national parks, landscape parks, nature reserves, nature monuments, etc.)
- shaping the surface, the beauty of the landscape

Threats:

The labor market in Podkarpackie is largely affected by migration of people to the cities placed outside the region. The liquidation of enterprises and the lack of job offers have caused a sense of economic and existential vulnerability, and the Podkarpackie job market has ceased to be attractive especially for the most mobile people. The young and well-educated people of the region began to emigrate with the opening up of labor markets for workers from the new Member States. Labor migration to the UK, Ireland and other countries still takes place, although the changing political and economic situation has a significant impact on the dynamics of this phenomenon. (2)

The high unemployment rate (9.7%), which is one of the highest in the country, is a bad thing. There are also average wages. High unemployment and low wages of inhabitants results in a number of unfavorable phenomena e.g. increase the poverty risk. The Podkarpackie Region has been characterized by one of the highest rates of relative poverty in Poland, and this trend has been increasing for several years. On the other hand, the most serious consequences of Podkarpackie unemployment are the long duration of unemployment, what has serious negative psychosocial effects. The high level of long-term unemployment affects especially the weakest categories in the labor market - people with low education and lack of professional experience, people with disabilities and those over the age of fifty are the main problem areas of the Podkarpackie labor market. Equally serious consequences are relatively new: young people with the age under 24 (15.1% of all unemployed) and with the age of age 25- 34 years (30.6% of all unemployed) and unemployed people with higher education (15% of all unemployed)

3. Support services for social enterprises

Introduction:

By 2014, the process of supporting of the social economy was twofold:

- (a) by attempting to build support networks conducive to the development of the social economy both at a national and a regional level
- (b) by focusing on creating some new social economy entities.

In the years 2007-2013, the Human Resources Operational Program, co-financed by the European Social Fund, from the central level by the Center for Human Resources Development (CRZL- that is a

budgetary unit subject to the Minister of Labor and Social Policy) a system project. "Integrated Social Economy Support System (ZSWESP)" was implemented.

The project included the implementation of key tasks:

1. Diagnosis - analysis of the social economy in Poland - among others. Development and implementation of monitoring tools for social economy support infrastructure, such as the Centers for Support of Social Economy (OWES) and the Centers for Support of Social Co-operatives (OWSS)
2. Support - creation of an effective support infrastructure for social economy entities - Creation and operation of Centers of Social Economy (CES), which aims to support the OWES and OWSS.
3. Education - Development and implementation of education and training programs in the social economy.
4. Social Economy Brand - Creating a positive brand image of social economy
5. Promotion - Dissemination of knowledge about social economy
6. Standards - Standardization of the creation and functioning of social economy entities
7. Comprehensive system of preparation of human resources for CES consultancy in the perspective of a pilot program of social enterprises financing.

The history has made it possible to initiate actions aimed at launching return tools for social enterprises.

At the central level, a pilot loan program for social enterprises was also implemented by the Ministry of Regional Development, together with the Bank Gospodarstwa Krajowego. "Financial engineering support for the social economy".

At the regional level within the framework of the OP HC 2007-2013 measures for the development of the social economy were included in Priority VII Promotion of social inclusion, Sub-measure 7.2.2, under which was provided a support for:

- a) Support for the establishment and / or functioning (including strengthening of capacity) of social economy supporting institutions that provide complementary and inclusive support within the project. access to legal, accounting and marketing services, consultancy (including advice to social economy entities on obtaining external funding, eg loans), training to gain the knowledge and skills needed to set up and / or conduct activities within the SE sector .
- b) Support for the establishment of a social co-operative, accession or employment in social cooperatives with the use of such instruments as training support and counseling for people wishing to set up a social co-operative (including vocational training needed for cooperative work), financial support for setting up, joining or hiring cooperatives and bridging (financial and advisory) support for established entities,

Social economy activities were also included in systematic projects of regional social policy centers (Sub-Action 7.1.3 of the HC OP), where the need for coordination of regional actions was recognized, resulting in the development of the Regional Action Plan for Social Economy Development for years 2012-2020. On the basis of the activities specified in this document, the Regional Policy Center in Rzeszow conducted various types of projects for the promotion of the social economy in the voivodship. a series of meetings in the field of popularizing the idea of social economy and building partnerships for this idea, a campaign of SE promoting among the whole population of Podkarpacie, conferences and meetings with good SE practices.

It was noted that a new look at the social economy regulations in Poland and the verification of the PES (social economy entities) support structure was necessary.

New opportunities for social economy in the new financial perspective have emerged. You can see it in documents constituting the concept of implementation of European funds in Poland 2014-2020. According to these assumptions, the promotion of social economy and social enterprises will take place within the investment priority assigned to the 9th thematic objective "Promoting social inclusion, combating poverty and all discrimination". This support will take place both at national and regional level. The National Program for the Development of Social Economy is the starting point for realizing these assumptions and an important instrument to regulate activities in the area of social economy in Poland.

The National Social Economy Development Program has been developed by the Strategic Group acting within the Team for Systemic Solutions in the Field of Social Economy, chaired by the Minister of Labor and Social Policy.

The new financial perspective supports the social economy primarily in a more direct way with regard to both newly established social enterprises start-ups, but also the development and professionalism of those already existing. It is also planned to increase the access of social enterprises to non-repayable capital but also repayable in the form of preferential loans and sureties. The professionalization of social enterprises is also to be expressed in the so-called. "Support network" - "cross-linking", resembling the Center for Social Economy Support.

Actions for social economy entities will primarily be based on:

- increasing access to training services,
- increasing access to advisory services,
- coaching,
- utilizing other necessary tools to build the potential of the social economy sector.

Summing up the issue of financing the social economy, the following programs should also be distinguished:

- Multiannual Government Program Civic Initiatives Fund 2014-2020, financed by the state budget;
- Knowledge, Education, Development 2014-2020, financed by the European Social Fund;
- Rural Development Program, financed by the European Rural Development Fund
- Regional Operational Programs financed by the European Social Fund and the European Regional Development Fund;
- MPiPS Resort Program "Social Economy", financed by the state budget;
- Labor Fund,
- State Fund for the Rehabilitation of the Disabled.

The financing of the social economy is still included in the resources of local government units of voivodships, counties and poviats as well as private funds from the civil and banking sectors.

3.1 Support for establishment of enterprises

a) Incubators

Support includes: RARR.S.A. <http://www.wsparcie.es/oferta/inkubacja/> Caritas Przemysł <http://projekt-nawigator.pl/>, Subcarpathian Consultancy and Consulting Agency from Jasło www.pakd.pl/owes/podkarpacki-osrodek-support-economy-sp

Support for the provision of premises, buildings, equipment purchased from the ESF, rental of premises on terms more favorable than those in force in the open market, advisory assistance at the stage of establishing and running of social enterprises.

SUPPORT AT:

- PES (social economy entities) and PS (social enterprises) establishing,
- NGOs establishing or introducing into existing NGOs a paid public benefit or business activity,
- strengthening of the NGO's potential and enhancing their competitiveness,
- transforming PES into PS,
- the creation, functioning and development of services for reintegration,
- obtaining external funding for PES and PS,
- conducting statutory activities of PES.

b) Business Coaching

Support is offered by: RARR <http://www.wsparcie.es/oferta/inkubacja/>, Caritas Przemysł <http://projekt-nawigator.pl/>, Subcarpathian Consultancy and Consulting Agency from Jasło <http://www.pakd.com/OWES/podkarpacki-resort-support-economy-sp>

Business consultancy is focused on supporting of the identification of current needs and coordination of current support processes - instruments supporting PS at the request of enterprises.

An offer:

- monitoring of the PS situation and supporting of its development,
 - conducting active co-operation with public institutions in order to support PS's activities (among others, obtaining premises, obtaining legal interpretations, mediation between PS and institutions, etc.)
 - Identify the needs and problems of the client's business and, based on that, prepare the business advisory process and conduct an assessment of the process,
 - Recognizing PS's business needs and potential and preparing PS consultancy and conducting an assessment of this process,
 - support PS in the process of acquiring repayable and non-repayable financing,
 - advising in the strategic planning process, developing a development plan and / or concept of increasing PS sales volume
- PS support in the process of building cooperative relationships, negotiating with customers, partners, suppliers, staff and / or stakeholders.

c) Legal aid

Rzeszow Center for Social Economy Support (ROWES) <http://www.wsparcie.es/oferta/doradztwo-specjalistyczne/>

It offers free legal assistance in the following areas:

- legal issues related to the creation and running of social enterprises and social economy entities,
- labor law,
- lustration, audit,
- others according to the needs.

Industry consultancy covers aspects related to the subject matter of a planned economic activity or statutory activity carried out by a social enterprise or economic entities. The specialist services of marketing, accounting, tax, legal, personal and industry might be used:

- initiative groups wishing to set up social enterprises,
- social economy entities, provided they are transformed into a social enterprise
- social enterprises.

RARR provides facilities, buildings and specialists.

d) The Social Economy Center at the "NIL" Association is a center offering comprehensive support to social economy entities and individuals interested in conducting business in the SE fields.

The Center's activities are addressed to social economy entities and individuals interested in launching a social economy project. In addition, CES provides substantive support for new development and supports already existing social economy actors, both social enterprises (social co-operatives and non-governmental economic organizations) and social economy entities (non-governmental non-governmental organizations).

The Social Economy Center offers:

- Training and counseling in the field of social economy, ie social cooperatives, CIS, KIS with regard to legal and organizational aspects
- Advising on the ability to raise funds to start a business,
- Financial and accounting services of social economy entities,
- Legal services for entities operating in the social economy sector,
- Services supporting the development of local partnerships, based on cooperation between local government and non-governmental organizations, for the social economy
- Promotion of social economy and employment in its sector.

e) Regional Center for Social Policy in Rzeszow in the framework of the non-competition project. "Coordination of the social economy sector in the Podkarpackie Province" co-financed by the European Social Fund within the framework of the RPO WP for years 2014-2020, Priority Axis VIII Social Integration, Measure 8.6. is the organizer of the Fair of Social Economy.

Societies, Centers for Social Integration, Occupational Therapy Workshops, Professional Activity Establishments, Vocational Training Centers, Foundations and Associations from the Podkarpackie Voivodship are present at the fair. The May Fair to show that the production and products of social

economy entities are of high quality and that the use of their offer contributes to the inclusion of disabled, excluded, previously long-term unemployed people in society.

3.2 Support services for young entrepreneurs and women

RARR S.A realizes an internship project "Time for a career" within the framework of action 7.1 of the RPO WP. The project is specifically aimed at unemployed women who are over 29 years old and who intend to return to the labor market. During the recruitment, especially women who are in a difficult situation on the labor market, such as the long-term unemployed, the disabled, over 50 years of age, living in rural areas and low-skilled persons, are particularly considered.

Under the project participants are covered by comprehensive support to improve their professional qualifications and employment.

- career guidance and development of an Individual Action Plan (IPD);
- soft and professional training as required by certification;
- Job placement and career counseling;
- Reimbursement of travel costs for counseling, training and placement;
- 7-month internships at workstations consistent with completed vocational training - 1750 PLN / month
- Career Coach support throughout the duration of the project

The "Opportunity for Success" project for people with disabilities:

- at the age between 18 and 67 (up to retirement age)
- having a current judgment with moderate or severe disability,
- unemployed, inactive, unemployed, job seekers unemployed

a) Business Plan competition

The support is offered by: RARR <http://www.wsparcie.es/oferta/inkubacja/>, Caritas Przemysł, <http://projekt-nawigator.pl/>, Podkarpacka Consultancy and Consulting Agency from Jasło <http://www.pakd.pl/owes/podkarpacki-osrodek-wsparcia-ekonomii-sp>

The purpose of the grant is to provide support to cover the costs of creating new jobs for social enterprises. The grant is intended to finance the expenses necessary to start or operate a social enterprise:

- fixed assets (used and not used);
- equipment,
- adaptation or adaptation (renovation and finishing works);
- current assets,
- copyrights
- intangible assets,

The amount of subsidy for a single social enterprise is: up to thirty times of the salary average, while creating a business is about 3,500 EUR.

b) Access to credit

RARR offers the Loaning Fund <http://www.rarr.rzeszow.pl/uslugi/fundusz-stawczkowy-msp>

The Fund's resources are allocated to support of the development of business activity of small and medium-sized enterprises (SMEs) from the Podkarpackie voivodship, including social enterprises.

The Fund's resources are intended to support investment projects for SMEs, such as: purchase, construction, extension or upgrading of facilities of a production / service or commercial nature; equipment, tools, apparatus, means of transport directly related to the purpose of the funded project; purchase of intangible assets;

Funds may be used for working capital (provided that they finance development expenditures)

The loans bear interest at the reference rate, which is determined by the European Commission. The basis for this calculation is the base rate, which is currently at 1.83%, increased by an appropriate margin depending on the borrower's creditworthiness and the manner in which the loan is secured. This methodology means that, in principle, interest on loans with good creditworthiness and good collateral is 1.83% + 1p.p. ie 2.83%. In the case of companies with low or bad credit, eg newly created interest rates may be higher.

The maximum value of the loan is 500,000.00 PLN and the period to what the loan can be extended is up to 60 months.

Institute of Social Economics <http://ies-rzeszow.pl/dzialania/pozyczki/>

The "First Business - Start-up Support II" program is aimed at:

- graduates of a school or college - unemployed or not engaged in other gainful employment - up to 48 months from the date of graduation or professional title,
- unemployed - unemployed and non-employed - registered in the labor office,
- students of the last year of study - unemployed and non-employed,
- the program covers the following voivodships: Łódzkie, małopolskie, opolskie, podkarpackie, śląskie and świętokrzyskie (the place of business).

Subject of the program:

- Loan for starting of business activities - can not exceed 20 times of the salary aware, valid on the date of the application for a loan and on the day of the contract signing,
- loan for setting up a workplace - can not exceed 6 times the average salary, valid on the day of applying for a loan and on the day of signing the contract

c) Youth Support Programs:

The support is offered by RARR: <http://www.rarr.rzeszow.pl/projekty/compas>

The project "KOMPAS - Comprehensive Project for Support and Social Adaptation of NEET in Podkarpacie Region"

48 people belonging to the NEET group aged 18-35, threatened with social exclusion from the Podkarpackie Voivodship, through a transnational mobility program addressed to the tourism and IT industry. The project was implemented from 01.02.2016 to 31.05.2017, divided into 2 editions.

Forms of support that were offered:

- 1) preparing participants for mobility, including:
 - a) preparation of Individual Action Plans (IPDs) - 2 meetings for each participant,
 - b) group activation, advisory and integration meetings - 20h / participant,
 - c) English classes - 90h / participant,
 - d) Italian classes - 30h / participant,
 - e) cultural preparation - 20h / participant,
 - f) psychological preparation (individual meetings with mentors) - 4h / participant,
 - g) courses as required complementary knowledge, skills and qualifications participant for IT and Tourism - 1 course for each participant,
- 2) Staying of project participants abroad:

A 60-day stay abroad with a placement in a company placed in Bologna (or in its immediate

vicinity) in Italy operating in the IT and travel industry. All expenses related to the stay abroad and internship are provided within the framework of the project.

- 3) Support of project participants after home returning
- a) individual advising and activating meetings - summing up - 10h / participant,
 - b) activation training - 24h / participant,
 - c) individual psychological support - 4h / participant,
 - d) English course - 48h / participant,
 - e) 3-year professional placements in IT or tourism companies for each participant.
- Project participants do not bear the costs of participating in the project.

Additional support within the project:

- mentor support,
- reimbursement of travel costs
- teaching materials.

d) Legal aid

- Attorneys, lawyers and NGOs offer free help.
- Individual legal points provide services at specific times, on working days. Below is a detailed timetable for the consultation.
- Lawyers provide services in the following places:
- Youth Cultural Center, Osmeckiego St., legal adviser, Monday - Friday in the hour. 9am - 1pm,
- Junior High School No. 10, Partyzantów St., advocate, Monday - Friday, godz. 7,30 - 11.30
- Rzeszow House of Culture, "Zwięczyca" branch Beskidzka st., legal adviser, Monday, Tuesday, 9:00 am - 1:00 pm, every Wednesday, the day of the month is marked with an even number, hours. 9am - 1pm, attorney, Thursday and Friday in 9:00 am - 1:00 pm, every Wednesday, the day of the month is marked with an odd number, 9am - 1pm

Points of unpaid legal aid run by non-governmental organizations:

- Rzeszow Seniors Council Rynek 7, Foundation of Legal Advice Center Prawnikon Warszawska 5/7 st., lawyers, from Monday to Friday from 8.00 to 12.00 and from 14.00 to 18.00,
- Junior High School No. 10 Partyzantów 10a St. , Association for Women "VICTORIA", lawyer - Monday and Thursday, 11.30-15.30, tax adviser - Tuesday, 11.30 - 15.30, legal adviser - Wednesday and Friday 11.30 - 15.30,

Rzeszow House of Culture, View Foundation, Foundation for Development and Support "Pasięka", legal adviser - Monday Thursday and Friday - 9.00 - 13.00, Master of Laws with experience in legal aid - Wednesday, 9am - 1pm.

The district office in Rzeszow organized a legal aid point in the building at ul. 9. Advice, from 7.30 to 11.30, are provided by legal advisers or lawyers, while from 11.30 to 15.30 non-governmental organizations.

Pursuant to the provisions of the Act, legal assistance provided in points may be used by:

- youth up to age 26,
- persons holding a valid Family Card,
- seniors after the age of 65,
- natural persons who, during the previous year, were granted social assistance under the Social Welfare Act,
- combatants, veterans,

- threatened or harmed by natural disasters, natural disasters or technical failures,
- pregnant women

In order to benefit from free legal assistance, one of the above conditions is sufficient. A person wishing to receive free legal assistance should have an identity document.

3.3 Training and skills development

a) Exchange of experience with other EU countries

RRDA - Social Seeds <http://www.rarr.rzeszow.pl/projekty/social-seeds>

<https://www.interregeurope.eu/socialseeds/>

SOCIAL SEEDS project partners co-financed and supported by the INTERREG EUROPE Program:
Project Leader: IFKA Public Benefit Non-Profit Ltd. for the Development of the Industry, Hungary
partners:

- Rzeszów Regional Development Agency, Poland
- Abruzzo Region, Italy
- Regional Development Agency of South Bohemia RERA Inc. ,Czech Republic
- BSC, Business Support Center Ltd., Kranj, Slovenia
- EURADA - European Association of Development Agencies, Belgium
- Estonian Advice Center, Estonia

Project co-financed by the European Regional Development Fund under the INTERREG EUROPE program

b) Training services of the Labor Office

District Labor Offices eg PUP Rzeszów <http://www.pup.rzeszow.pl/index.php?id=b4>
<http://www.pup.rzeszow.pl/index.php?id=b11>

Training to obtain, supplement or improve the professional or general skills and qualifications needed to perform work, including job search skills.

The training takes place in the form of a course, carried out in accordance with a teaching plan covering an average of not less than 25 hours per week, unless separate provisions provide for a lower level of training. Training can last up to 6 months and in situations justified by the training program in a given profession for no longer than 12 months.

c) Clusters

Podkarpacki Cluster of Social Economy Cluster of Locomotive

<http://www.ekonomiaspoleczna.pl/wiadomosc/1282381.html>

The cluster is an open platform for cooperation to strengthen the potential of social economy entities operating in the Podkarpackie Voivodship, with particular emphasis on the cooperation and cooperation of social economy entities with business, science and public administration.

The aim of the undertaking actions is to: promote and support social entrepreneurship as an effective tool for activating, implementing innovative solutions in the social economy sector, developing and strengthening cooperation between local actors, creating a positive image of the social economy

sector; social entrepreneurship and competitiveness on the market, increasing the importance of social economy entities for the region's economy.

The initiator of the undertaking is the Institute of Social Economy in Rzeszów - a foundation involved in the support of Podkarpackie social economy entities. The cluster consists of fourteen entities representing all three sectors of socio-economic activities. It is composed of representatives of science, public administration units and entrepreneurs - including social service cooperatives as well as non-governmental organizations.

d) Higher education programs devoted to social enterprises

The Higher State School of Eastern European Studies in Przemyśl offers postgraduate studies in the field of: "Management of social economy entities"

<http://www.pwsw.pl/zarzadzanie-podmiotami-ekonomii-spoecznej-sp>

Type of studies:

Postgraduate studies for people with higher education (master's, bachelor's degree, engineering)

The aim of the studies is to prepare highly qualified managerial staff of social economy entities, who possess a broad knowledge of the legal environment, effective financial management of PES, personnel management, cooperation with the institutional and social environment and prepared for the practical management of the PES marketing strategies and the use of any financial instruments available to PES.

3.4 Innovation

a) Other services

ROPS runs a sales portal of social economy entities WWW.WSPIERAJIWYBIERAJ.PL, where you can make purchases directly from social economy entities from the Podkarpackie Voivodship.

The aim of the portal is to promote and sell products and services produced by social economy entities from our region such as occupational therapy workshops, social integration centers, professional activity centers and social cooperatives.

3.5 Internationalization

a) Legal support, Marketing services,

Hope offers RARR - COI <http://www.coi.rzeszow.pl/>, Marshal's Office of Podkarpackie Voivodship, <https://www.trade.gov.pl/en/>

Consultancy and support in entering the foreign markets, including PS

PARP <http://www.funduszeuropejskie.gov.pl/nabory/12-internationalization-msp/> offers action:

1.2 Internationalization of SMEs, Operational Program Eastern Poland
Action 1.2 Internationalization of SMEs has been divided into two phases. In the first stage, the company receives a grant from an external consulting firm to develop a new business model for internationalization, that is, a strategy for entry into selected foreign markets, and the second stage the

company receives funding for the implementation of the strategy. Applications may be submitted by entities meeting the criteria of micro, small or medium entrepreneurs conducting business activity in the territory of the macroregion of Eastern Poland. The maximum allowable level of the project is 50 000 PLN

3.6 Other support

Territorial self-government units / public administration institutions - application of social clauses. Social clauses are an exception in the general procurement rules, that allow the contracting authority to take account of important social criteria when ordering. The contracting authority may reserve the contract only for contractors employing people with disabilities or make the execution of the subject of the contract subject to fulfillment by the contractor of additional conditions fulfilling social objectives. The Polish Public Procurement Law (since 2009) provides for two social clauses: the possibility to close public procurement proceedings only to entities employing more than 50% of persons with disabilities (Article 22, paragraph 2 of the UPZP) and the possibility of making the execution of the order subject to employment of socially excluded.

SWOT Analysis: Support Services

<p>+ STRENGTHS</p> <ul style="list-style-type: none"> - "Fashion" for the social economy - EU funds for SE development - Financial support for job creation in PES (non-returnable bridging, investing support) - many call for proposals on the SE sector - mutual support of social enterprises - very good OWES activity (adaptation of support services to the needs of the organization, professionalism of the employees, high technical value of services) 	<p>- WEAKNESSES</p> <ul style="list-style-type: none"> - Difficulties to obtain financing for investments, eg renovation of premises - lack of support / funds for current activities eg demand for office supplies, postage, rent, heating, media - No free accounting support - lack of working capital (banks); - no guarantee funds; - no PES common support fund ; - low viability of social co-operatives may be due to lack of financial support after project termination
<p>+ CHANCES</p> <ul style="list-style-type: none"> - economic crisis (social economy actors and related initiatives as one of the tools to fight the crisis); - Social Economics (opportunity) for social reintegration (help for people in the area of social exclusion). 	<p>- THREATS</p> <ul style="list-style-type: none"> - Economic crisis (the "fashion" for the social economy is determined by the state of the economy and financial support from the EU funds); - unfavorable environment (insufficient knowledge, low awareness in the context of the

<ul style="list-style-type: none"> - EU programs implemented (support programs for social economy entities); - Networking (CIS / KIS / ZT / WTZ / SP network design - mutual support) - permanent co-operation (eg by mutual contracting of services); - building clusters - mutual assistance in promotion; - the usage of local media for social economy marketing (films, reportages) <ul style="list-style-type: none"> - Contests promoting social economy, eg "SE Leader Competition", which awards financial support for the promotion and development of SE in the region - competition for the best SE product / service; - the EU projects supporting the SE finance eg the social economy fairs 	<p>functioning of SE entities and lack of orders/contracting for SE entities);</p> <ul style="list-style-type: none"> - (unfavorable, insufficient) legal regulations; - demanding attitude of SE entities - little knowledge of SE subjects from officials; - poor co-operation between SE entities - distrust / competition. - Unstable future of social economy entities in view of the end of the financial perspective in 2020.
--	--

4. Networking – Initiatives

4.1 Representation of regional social enterprises

a) Support, lobbying, negotiations with policy makers

Podkarpackie Committee for Development of Social Economy

The activities of the Committee are aimed at supporting policy coordination in the social economy in the region, including:

- cooperation with other organizations forming the institutional cooperation networks from the area of social economy, integration and social assistance, entrepreneurship at regional and national level,
- cooperation on the flow of information on activities undertaken by and for the benefit of social economy entities
- monitoring the implementation of regional strategies, including the social economy, identification of barriers to the development of social economy in the region and formulation of recommendations for their liquidation or limitation
- lobbying for favorable legal solutions for the social economy sector, developing new innovative solutions for the development of the social economy in the region,

The Committee is composed of 25 members representing local government units, clusters, centers of social economy support, social enterprises and the world of science and media. The members of the Committee shall perform their functions in a socially responsible manner. There is no remuneration for the Committee. The activities of the Committee are financed by EU funds.

<http://www.rops.rzeszow.pl/rops-2/home/169-aktualnosci/1150-podkarpacki-komitet-rozwoju-ekonomii-spolecznej-powolany>

b) Representing the interests of the sector and dialogue with other segments of the social economy.

The Podkarpackie network of social economy entities was created thanks to the project called "Coordination of the social economy sector in the Podkarpackie voivodship" within the framework of activity 8.6 of the Regional Operational Program of Podkarpackie Voivodship 2014-2020. The project is co-financed by EU funds.

The goal of the project is:

- creation of regional networks of social economy support centers operating in the region, in particular through the organization of regional networking meetings for the OWES, enabling exchanges of information between centers on the activities undertaken, progress and problems in implementing support, applied solutions and working methods. In addition, collecting information on the activities of the OWES and their work at the level of the whole region.
- creation of regional networks of social economy entities (eg clusters) and integration of social economy entities into regional organizations of industry (networks, clusters);
- Creation of regional networks of cooperative societies of reintegration (CIS, KIS, ZAZ, WTZ) to facilitate mutual learning and exchange of information and support of these entities in achieving service standards.

Under the aforementioned project operates:

- Podkarpackie network of social economy entities
- Podkarpackie network of cooperative social economy entities of reintegration character for WTZ
- Podkarpackie network of cooperatives of social economy of reintegration character for ZAZ
- Cross-talk meetings take place several times a year, depending on needs. The first meetings took place in September 2016.

<http://es.rops.rzeszow.pl/category/sieci/>

4.2 Network activities

a) International projects on innovation in products and services

A sales support-select website was created by the Regional Center for Social Policy in Rzeszów as part of the non-competition project called " "Coordination of the social economy sector in the Podkarpackie Province" co-financed by the European Union within the framework of the Regional Operational Program of Podkarpackie Voivodship for years 2014-2020.

The aim of the portal is to promote and sell products and services produced by social economy entities from the region such as occupational therapy workshops, social integration centers, professional activity centers and social cooperatives.

Thanks to the sales portal, the potential customers can buy directly from the social economy entities from the Podkarpackie voivodship.

<http://www.wspierajwybieraj.pl/>

In addition, PES products and services have been launched, enabling potential customers to see what services PES products offer in the Podkarpackie region. The created portal redirects customers to the respective websites of the company where the offer is located and the service price list.

<http://es.rops.rzeszow.pl/baza-produktow-i-uslug-ps/>

b) Clusters

Cluster of Social Economy "LOKOMOTYWA"

The main objectives of the initiative are to promote and support social entrepreneurship, implement innovative solutions in the social economy sector and create a positive image of the social economy sector in the region. The aim of the cluster is a common activity and creation of networking of SE entities. Cluster members can exchange experiences, support themselves in the professionalisation of their services, help themselves in gaining funding for their activities. The initiative will also contribute to the building of lasting and effective relationships between local government, organizational units, business environment institutions, NGOs and social economy entities.

To the Cluster of Social Economy - Locomotive includes: Rzeszów University, local self-government units, Strzyżów Commune, entrepreneurs - including social cooperatives, non-governmental organizations; a total of 14 entities.

On November 26, 2014, the inaugural meeting of the Cluster members was organized. The aim was to present all the entities forming the Cluster - their profiles, potential, expectations and the plan for the next quarter. Towards the end of 2014, the first of a series of training courses to improve the competences of the Social Cooperative Cluster was completed. During the two-day workshop (11th, 15th December 2014), the participants strengthened their motivation for joint business, learned how to design and achieve their goals, and learned how to overcome doubts and helplessness in crisis situations.

<http://ies-rzeszow.pl/pkes/>

<http://www.ekonomiaspoleczna.pl/wiadomosc/1282386.html>

Podkarpacki Cluster "Running from San to Development" (Within the course of the San river to Development)

The Regional Cluster of Social Economics and Innovation, "Running from San to Development" is a voluntary and open association of public sector actors, entrepreneurs and non-governmental organizations. The three-sector character of the Cluster is its role as a network animator in the area of interrelated economic and social activities serving both problem solving and local and supra-local development.

The Regional Cluster of Social Economy and Innovation aims to achieve the goal of the main agreement through the joint implementation of such projects as:

1. Education of self-government workers in building multisectoral partnerships
2. Education of children and youths in the field of social entrepreneurship. Promoting the career paths from volunteering to self-organization or social co-operatives;
3. Creation of tourism products and services in the territory of the partnership

4. Research on the scale and potential of the social economy sector in the area covered by the partnership using the potential of organizations, local authorities and universities
5. Promote social economy as an effective tool for solving social problems
6. Promote non-governmental organizations, local leaders in the area of partnership - their achievements and development potential; Utilizing the potential of non-governmental organizations, social cooperatives, and various trilateral partnerships to create infrastructure in the area of social assistance and inclusion;
7. Launching a permanent team to prepare projects to raise funds for the implementation of development initiatives, using the potential and experience of the Center for Social Economy Support (OES), universities and other organizations.
8. The cluster consists of 44 members: offices, colleges, social enterprises, associations and other institutions.

<http://www.zbiegiemsanu.pl/>

4.3 Experiences exchange

a) Forum for experience and practices exchange

ROPS is the organizer of the Podkarpackie Social Economy Forum. The Podkarpackie Social Economy Forum is a two-day meeting with experts, discussion panels, workshops and a presentation of good practices.

On the 9 and 10 November 2017, the Forum worked with self-government and social economy entities, public procurement through the use of social clauses, outsourcing of services of general interest, and jointly working out new ideas for cooperation between these two sectors.

<http://rops.rzeszow.pl/96-ukryta/1387-podkarpackie-forum-ekonomii-spoecznej>

In 2016, the Second Eastern European School - Institute of Social Sciences organized the Second Industrial Social Entrepreneurship Forum. The Forum was an opportunity to promote and disseminate the latest knowledge on the social economy as well as to show the success of the social enterprises operating in the region. The Forum was addressed to local governments, NGOs and entrepreneurs, aiming at presenting the possibilities of launching local, local, and local development potential through the use of social economy instruments and national and EU financial resources for this purpose in the current perspective of the EU.

<https://przemysl.pl/43882/ii-przemyskie-forum-przedsiębiorczosci-spoecznej-w-przemyskiej-uczelni.html>

b) Monitoring and analysis of the Social Economy

The Regional Center for Social Policy in Rzeszow draws up reports and analyzes on the functioning of social economy entities in the region eg:

- Regional Action Plan for the Development of Social Economy in Podkarpackie Voivodship for the years 2012-2020 "

http://www.rops.rzeszow.pl/dokumenty/efs/REGIONALNY_PLAN_NA_RZECZ_ROZWOJU_ES_W_WOJ_PODKARPACKIM_2012.pdf

- "Monitoring Report on the Implementation of the Regional Action Plan for the Development of Social Economy in the Podkarpackie Region for 2012-2020 for 2014".
<http://es.rops.rzeszow.pl/wp-content/uploads/2015/12/RRPDES-za-rok-2014.pdf>
- Report on the state of development of the social economy in the Podkarpackie Voivodeship in 2015 "
http://es.rops.rzeszow.pl/wp-content/uploads/2017/03/Raport_o_stanie_rozwoju_ES_2015.pdf
- "Subcarpathian Social Economy Development Program 2016 -2020"
<http://es.rops.rzeszow.pl/wp-content/uploads/2016/07/program.pdf>

In addition, RRDA and ROPS constantly monitor PES numbers in the region, have their own database of the above. entities. The PES listing contains the most important contact details of the company.

<http://es.rops.rzeszow.pl/wp-content/uploads/2016/09/Wykaz-SS.pdf>
http://es.rops.rzeszow.pl/wp-content/uploads/2016/02/Wykaz_ZAZ.pdf
<http://es.rops.rzeszow.pl/wp-content/uploads/2016/01/Wykaz-WTZ.pdf>
http://es.rops.rzeszow.pl/wp-content/uploads/2017/10/wykaz_CIS.pdf
http://es.rops.rzeszow.pl/wp-content/uploads/2016/01/wykaz_KIS.pdf
http://es.rops.rzeszow.pl/wp-content/uploads/2014/09/Zak_PCH_Splnw.pdf

The website also has a database of OWES support centers and SE Support Centers.

<http://es.rops.rzeszow.pl/akredytowane-owes/>
<http://es.rops.rzeszow.pl/przykladowa-strona/>

Reports are prepared as part of projects co-financed by EU funds.

c) Partnership in regional and EU projects

SOCIAL SEEDS project

SOCIAL SEEDS project partners co-financed and supported by the INTERREG EUROPE Program:

- Project Leader: IFKA Public Benefit Non-Profit Ltd. for the Development of the Industry, Hungary

Partners:

- Rzeszów Regional Development Agency, Poland
- Abruzzo Region, Italy
- Regional Development Agency of South Bohemia RERA Inc. ,Czech Republic
- BSC, Business Support Center Ltd., Kranj, Slovenia
- EURADA - European Association of Development Agencies, Belgium
- Estonian Advice Center, Estonia

<https://www.interregeurope.eu/socialseeds/>

The aims of the project:

- creating sustainable business models
- the development of social entrepreneurship by promoting employment through employment in order to promote the employment of disadvantaged people. Within the supported social enterprises, a total of 4,000 new, sustainable jobs will be created to enable people living in disadvantaged and inactive employment.
- continuous analysis and monitoring of activities aimed at improving the landscape of social enterprises,
- interregional good practice in policy making

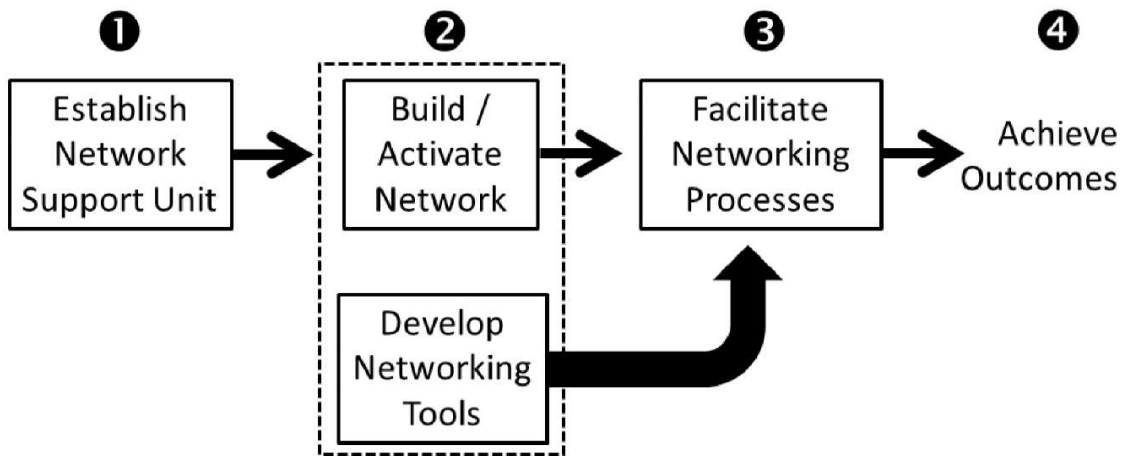
SWOT Analysis: Networking

<p>+ STRENGTHS</p> <ul style="list-style-type: none"> - regular network meetings and oral communication between members are very important and can have a major regional impact - fast and flexible solution of complex problems, also of international dimension; - Involvement of many stakeholders in political debates, thereby increasing the quality and acceptability of these policies. - Networking creates a sense of teamwork, which improves cooperation and synergies for knowledge transfer, not only between individual stakeholders but also between countries. - Better dissemination of experience and information sharing also at EU level - Cross-linking as a tool should be seen as a modern activity for all programming purposes 	<p>- WEAKNESSES</p> <ul style="list-style-type: none"> - regular network meetings usually reach a ceiling above which their activity becomes limited due to lack of financial resources - difficulties in participation encouraging and involvement of stakeholders - low level of the participation - lack of common methodology for needs determining - difficulties with reaching some target groups - lack of durability of network structures - Instability / loss of staff for various reasons, eg political transitions - lack of sufficient knowledge and skills of participants in the network - No clearly defined network goals
<p>+ CHANCES</p> <ul style="list-style-type: none"> - Cross-linking can become a policy tool in shaping the development of social enterprises - With the maturation of the network, stakeholders and recipients acquire a better understanding of the social economy development policy through the involvement of the PS in the implementation processes. - the time will help to reach a mature, efficient and well-connected network - Increase of the knowledge, skills and experience through networking 	<p>- THREATS</p> <ul style="list-style-type: none"> - Public funding allocated to networks varies considerably across the EU. (The allocated budget is based only on Member States' decisions, but there is no clear pattern related to the size of the territory, its population, needs). - There are no definitions and there are difficulties in translating the terms "network" and "networking". - no secure financing / unstable budget subject to change

5. Good practice example – networking

Cross-linking has found its place, and the main implementation of cross-linking activities has been made by the Regional Center for Social Policy. For this reason, ROPS in Rzeszow took activities some actions at writing an innovative project concerning networking in the Podkarpackie Voivodship. This is the first project in the region involving a voluntary partnership designed to carry out of the common tasks and solve emerging problems. It is also a kind of mission of the organization, and the goals of the network do not have to be identical with the objectives of the organization, network participants retain their full independence. ROPS strives it to be a cross-cutting tool as a modern and future-proof activity in the region.

These assumptions are illustrated in the following diagram:



Regional Center for Social Policy in Rzeszów as part of the non-competition project. "Coordination of the social economy sector in Podkarpackie voivodeship" co-financed by the European Social Fund within the framework of the Regional Operational Program of the Podkarpackie Region for the years 2014-2020, Priority Axis VIII Social Integration, Measure 8.6, assumes the coordination of the social economy sector in the region. The project is divided into two biennial editions. The first edition is from 14.04.2016 to 31.12.2017. The second edition of the project is scheduled for January 2018 and will last until 2019.

The main objective of the project is to increase the role of the social economy sector in the Podkarpackie voivodeship, strengthen cooperation and cooperation between social economy entities, increase the visibility of social economy entities as suppliers of products and services and promote the social economy sector among the inhabitants of the province. Podkarpackie. The project is realised in the entire Podkarpackie Voivodship.

The value of the project amounts to 1,404,000.00 PLN, including the value of EU funds under the ROP WP 2014-2020 1 224 000.00 PLN. On the "crossing" in the first edition of the project was spent 151 189.17 PLN.

Duration of the project: 14.04.2016 - 31.12.2017 - 1st edition, 01.01.2018 - 31.12.2019 - 2nd edition

Main assumptions of the project

1. Coordination of the social economy sector in the region through the creation of the Podkarpackie Committee for the Development of Social Economy, in accordance with the provisions of the National Program for the Development of Social Economy, whose task will be to transform the Regional Action Plan for Social Economy in the province Podkarpackie in years 2012-2020 for the Regional (Voivodship) Program for the Development of the Social Economy. It will also serve as consultative and advisory in the development of the social economy. The task of the Committee will include:
 - setting of the vision and direction of the development of the social economy in the region,
 - identifying of barriers to the development of the social economy and formulate recommendations for their liquidation or limitation,
 - developing of new innovative solutions in the field of social economy development in the voivodship.

The Committee will consist of representatives of the voivodship self-government, local government, science, the media, as well as representatives of the social economy sector.

2. Creation of cooperation networks - networks of cooperation of particular types of social economy entities will be created. Their tasks are going to be representation of the interests of social economy entities, development of common standards of functioning of the entities, creation of space for exchanging views and taking actions to represent common interests.
3. National study visits - familiarize of network participants with the good practices of social economy entities operating in the social economy sector in other regions. Visits will allow to implement effective and / or innovative solutions used in visited entities by entities from the voivodship. There is also going to be proposed the exchange of information, experience and the establishment of long-term relations between social economy entities.

Within the framework of the project, specific networks have been set up, with regional networks comprising:

- Podkarpackie cooperation network of the OWES
- Podkarpackie network of social economy entities
- Podkarpackie network of cooperative social economy of reintegration character for CIS / KIS
- Podkarpackie network of cooperative social economy entities of reintegration character for WTZ,
- Podkarpackie network of social economy cooperatives for ZAZ reintegration

The members of the social economy entities and social enterprises ie the OWES, the PES, the CIS / KIS, the WTZ, the ZAZ are employees designated by their direct superiors. Observers may also be requested.

- a) experts – meetings moderators
- b) members of the Podkarpacki Committee for Social Economy Development
- c) representatives of the scientific community
- d) ROPS employees in Rzeszow

General objectives and tasks of regional cooperation networks in the Podkarpackie Region:

- developing of a model of interinstitutional cooperation ROPS-OWES for new quality support system building within the regional cooperation within the network of the OWES.
- exchange of information on implemented activities, working methods, progress and problems with implementation of the activities of the OWES aiming at co-ordinating the joint activities of the OWES
- supporting for OWES activities aimed at cooperation with local self-government units in the region
- Mutual support, exchange of experience in regional cooperation networks
- CIS / KIS support in meeting service standards
- Constant monitoring / diagnosis of problems and needs of each network group
- opinions exchange on the solutions developed, good practices
- Promoting of the innovative solutions in the area of social economy
- Developing of effective forms of dialogue between participants in regional networks
- Taking joint action of initiatives
- Constant debate on customer needs and finding solutions about fulfilling those needs

- Constant diagnosis of needs, problems of individual networks
- Aggregate information about OWES activities and their performance

Network activity in the project runs in two ways:

- The first activity is focused on the exchange of experiences and good practices between entities of social economy in the Podkarpackie Voivodship
- The second activity is related to the creation of "support groups". Social economy actors report issues to discuss at a given network meeting. This type of task is intended to be a suitable amount in the project budget, which is aimed at involving of a specialist in discussing the subject / problem of a given network. For example, in Poland, the Act on Amendments to the Social Cooperative Act and certain laws has entered into force. He led an information meeting for the network, discussed in detail the scope of the changes that were making.

The main assumption of the network activity in the project is the development of the so-called. "Soft effects" (exchange of experiences, good practices, mutual support) - each network meets once a quarter. Despite the general assumptions of the project, the "hard effect" of the functioning WTZ networks (Occupational Therapy Workshops) has been worked out. As a result of WTZ networking meetings, participants of the network together with the director of the Rzeszów PFRON (State Fund for the Rehabilitation of the Disabled) set up the Polish Association for Support of Occupational Therapy Workshops "MOST". It is a very active association in the Podkarpacie Region, what main assumptions are based on:

- Integrating of the environment of people involved in Occupational Therapy workshops, aware of the WTZ social mission
- Impact on Policy, Legislation on Supporting Social and Occupational Rehabilitation of Disabled People, Including Considering the Significant Role of Occupational Therapy Workshops
- Prevent the social exclusion of people with disabilities
- Disseminate knowledge about Occupational Therapy Workshops
- Promote and create a positive image of Occupational Therapy Workshops
- Supporting activities aimed at raising the level of rehabilitation for people with disabilities
- Integrating and facilitating of mutual cooperation and communication between Occupational Therapy Workshops and public administration bodies, and also promoting their role in social rehabilitation of people with disabilities among the public and non-governmental organizations;
- Dissemination of corporate social responsibility and its importance to prevent social exclusion of people with disabilities.
- The task of the project staff is to organize the meetings of specific networks: recruitment of participants (general mailing with existing PES database, telephone contact), creation of an application form, inquiry and selection of suitable place for networking meetings, catering, moderator, network monitoring, adding informations about network meetings in the ROPS website, updating appointments, posting any meeting information.

The main problem of "networking" in the Podkarpackie Voivodship is appropriate and persistent involvement of participants in the network activity, as well as some discrepancies between expectations of "support" by social economy entities and the ability to provide assistance by ROPS. In addition, there are very large differences in certain social economy actors engagement within the network:

- The WTZ and ZAZ networks are best located in the region, are most involved in network operations, have clear expectations and consistently implement them
- CIS / KIS networks - a very large number of entities in the Podkarpackie voivodship, low activity of members in the cross-network (most often reported problems: badly scheduled network meeting, not enough staff to report their participation in the network)
- SE networks - a small turnout in relation to the total number of existing entities in the region.
- The biggest challenge for executives of the above mentioned project is to take concrete actions to increase attendance of participants in certain networks, encouraging them to use exchange of experience. In addition, the activities of "networking" to date are financed entirely from the project budget. The main challenge of the project is the functioning of the network of social economy entities after 2023, apart from ROPS measures, orientation of the 2nd edition of the project to close cooperation of the network, so that the above entities can not function independently, to network independently without financial supervision or financial support of the project staff.

6. Good practice example – support

Rzeszów Regional Development Agency S.A. implemented a project for local self-government entities (JST) in the Podkarpackie voivodship: "Self-government Social Co-operatives - a place of work for the long-term unemployed". The project was co-financed by the European Union under the European Social Fund. The value of the project was 2 076 280.50 PLN. The project was implemented in the period from 01.08.2012 to 31.10.2014 but its effects are visible nowadays. The aim of the project was to create conditions for the employment of 30 long-term unemployed people in the social economy sector through the creation of self-government social cooperatives. The project is presented as an example of good practice because it was unique in the country. Thanks to it, 5 social co-operatives were created. It is worth adding that in Poland there are only 10 cooperatives established by local governments, 5 of them were established in Podkarpacie. Three years after the completion of the project, it was possible to maintain the 60% mark, indicating the great success of the project. To date, 5 local self-government co-operative projects were made and three of them are still function and employ people living in particularly difficult financial situations, including homeless people.

Social co-operative is a form of social enterprise. Employment can include people who find it difficult to find a job: long-term unemployed, disabled or, for example, leaving prison. Working in social co-operatives gives them a chance for social and professional activation, integration, upgrading their qualifications. There are two types of social co-operatives in Poland:

1. Social co-operatives of natural persons - such co-operatives may be established by a minimum of 5 people, eg unemployed or disabled. Its members may also be employed, provided their share does not exceed 50% of the number of people in the social cooperative. At present, there are taken actions on the preparing of the bill on the amendment of the law on social co-operatives and some other acts. Probably the conditions and principles of establishing social co-operatives in Poland will get changed.
2. Social cooperatives of legal persons - such cooperative may be established by a minimum of two entities, including: non-governmental organizations, church legal persons and local government units (JST). In this case, the cooperative consists of two entities, while the cooperative is obliged to employ at least 5 unemployed persons, the disabled and other

persons at risk of exclusion mentioned in art. Article 4 (1) of the Law on Social Cooperatives. Working in self-government cooperatives is much more beneficial than working in a social co-operative founded by natural persons. This is due to the fact that the municipality itself makes it available and takes care of the provision of premises, buildings or parcels for SC activities, current orders. Services, financial support, accounting, economic, legal or marketing consultancy for a social cooperative - may be financed by a local government unit from its budget, by way of a resolution. Collaboration in the implementation of joint ventures, partnership projects (according to the law on development policy). There is real support by local governments in the form of eg sharing the meeting rooms or other resources (telephone, fax, etc.) for social economy entities. The expenditures of each local government include funds for the purchase of goods and services necessary for the functioning of various administrative units and related to investments. They are often larger than funds for social assistance or vocational activation of people at risk of social exclusion. By applying social clauses by local governments, social co-operatives in the context of service delivery or commodity production will guarantee social objectives. This is a solution that is advantageous that it allows the implementation of tasks of the municipality or county, and at the same time it is financially neutral from the perspective of the budget of the self-government.

Particular attention should be paid to the possibility of social co-operatives being set up by local self-government units, because, according to the case law of the Court of Justice of the European Communities, there is a possibility of omitting the tendering procedure when outsourcing public social cooperative created by the self-government. Establishing a co-operative will not only contribute to the creation of jobs for people in particularly difficult situations, but may also be able to carry out the tasks of the municipality effectively by outsourcing them to social co-operatives. At that time, long-term unemployed people in the cooperative can learn how to do business, work together, gain experience and qualifications, improve their products / services and enter the open market.

A commune or a district with support for the project, including financial support for setting up cooperatives, will have an impact on the creation of new jobs for the long-term unemployed in the labor market, while at the same time being able to perform their own tasks more effectively. , commissioning them social co-operatives. The creation of a social cooperative influences the reduction of local unemployment.

The target groups of the project were:

- Legal persons - 32 JST (Communes, Poviats-Counties) able to establish a social cooperative in accordance with the Act on Social Co-operatives,
- 30 long-term unemployed persons who have been staying in the Employment Agency registry for a total of more than 12 months in recent years.

The idea for the project "Local Government Social Cooperatives - a place of work for long-term unemployed" was created as a result of experience connected with the implementation of the project "Podkarpackie Social Co-operatives" addressed to individuals. This undertaking met with the great response of unemployed people interested in the subject of establishing and working in social co-operatives. During recruitment for this project, people seeking a safe and stable work, not interested in the membership of the cooperative of natural persons, understood by them as the greater responsibility and the need to make decisions were sought. It was difficult to convince long-term unemployed people

to start their own co-operative, and that was the most difficult action. The inspiration for selecting JSTs as founders of cooperatives was the issue connected with the awarding by contracting authorities to subordinate entities. "In-house orders" referred to in the jurisprudence of the Court of Justice of the European Communities, according to what, during the commissioning by local government of the tasks of the municipality / county (eg repair and construction works, transport of children to schools, snow clearance, green areas) these units are obliged to use the tendering procedure. Hence the idea of creating a social cooperative by a minimum of 2 self-governments acting in concert. JSTs as the founding body might support the development of these social economy entities and enable them to ensure that social co-operatives can have the orders secured from the outset and thus provide jobs for long-term unemployed persons.

The project assumed various forms of support that helped to achieve the goal:

1. Training for representatives of self-government units in the scope of setting up and functioning cooperatives of legal entities,
2. Advising local governments on the creation of social cooperatives, the possibility of outsourcing public tasks and the creation of a business plan
3. Advice on the preparation of statutes and documentation to the National Court Register and updating the social cooperative's business plan
4. Consultancy in the field of Human Resources and recruitment of employees of social co-operatives.
5. Directional / vocational training for future employees of social co-operatives - long-term unemployed.
6. Expert advice in developing strategies and marketing campaigns for social co-operatives, cost optimization and quality improvement.
7. Financial support up to PLN 100 000 for employment of at least five long-term unemployed persons in a social cooperative
8. Bridging support of PLN 1,600 per month for one long-term unemployed paid out during the first 6 months (the total amount is PLN 48000).
9. . Extended bridging support of PLN 1,200 for one long-term unemployed person paid over the next 3 months (the total amount is PLN 18,000).
10. Individual assistants for social co-operatives providing support for the first nine months of co-operative activity.

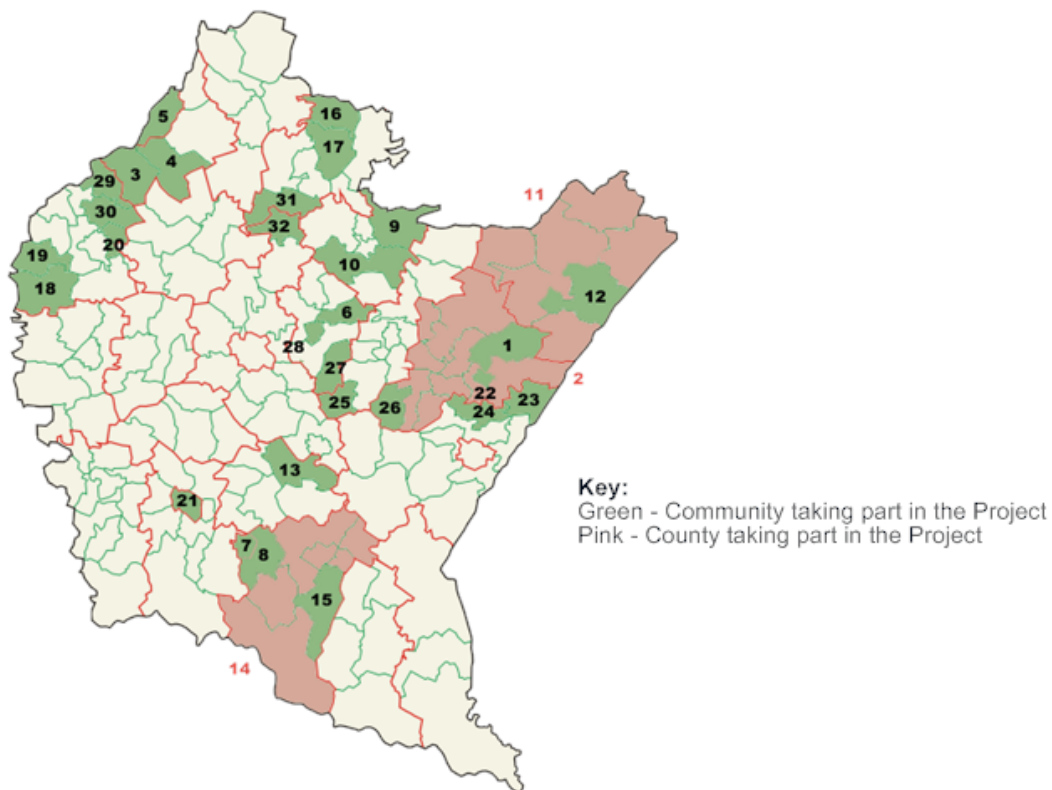
The project has opened new possibilities for self-government, which have not been known to them till now. In 149 communes and 25 poviats in the Podkarpackie Voivodship, on average every fifth knew the term "social co-operative", and it was in relation to cooperatives of natural persons. None of the local governments knew the rules of establishing social cooperatives of legal entities. During the recruitment process, over 150 JSTs were visited, 32 of which were recruited. This is 1/6 part of the voivodship. Recruitment was a great success and showed that building a social economy becomes a matter for local governments. JSTs that have joined the project are proof of this. However, it turned out that for the majority a matter of social cooperatives in Podkarpacie is a novelty, and despite considerable interest in the project, the vast majority of self-government units could not find a suitable partner to set up a cooperative. Many of these local governments have declared their intention to set up a cooperative in the near future.

11. local governments have set up 5 social cooperatives in the Podkarpacie region. At present, cooperatives employ a total of 25 people who were long-term unemployed before joining the project. These people found a stable and meaningful job in the cooperative. Cooperatives carry out simple

tasks for self-governments, mainly in the area of green care, cleaning around the buildings, sidewalks, car parks, care for the elderly and disabled, forest services, bringing children to schools, minor repair works.

The result is the creation of 25 jobs for the long-term unemployed and the opening of 5 self-government social co-operatives:

- ZŁOTE RUNO (07.06.2013) - Lubaczów Commune, Lubaczów County
- EKODA (19.06.2013) - Laszki Commune, Jaroslowski District
- DEVELOPMENT (04.07.2013) - Kuryłówka Commune, Leżajsk Commune
- ZARBES (30.07.2013) - Municipality of Zarszyn, the commune of Besko
- TOTAL (16.07.2013) - Mielec Commune, Wadowice Gorne Commune, Radomyśl Wielki Commune



7. Conclusions from the diagnosis

The Podkarpackie Voivodeship in terms of the development of the social economy sector is one of the fastest growing region in the country. The distribution of funds allocated to Poland as part of the EU's Financial Perspective 2007-2013 was very influential, what resulted in a significant increase in the number of both social enterprises and reintegration entities. To ensure further development of the sector in the region, using both the funds available in the EU Financial Perspectives 2014-2020, as well as any initiatives of the social economy environment, it is:

1. start implementing the networking of social economy entities, cooperation between entities both within the group of entities, as well as using mixed crosslinking, i.e. combining entities of a different nature, e.g. Centers / Clubs of Social Integration with social cooperatives, Professional Activity Establishments with Occupational Therapy Workshops, that will allow us to develop new solutions in the field of social and professional reintegration.
2. to ensure the continuous development of the social economy, as an idea should be taken into account at the stage of local planning, diagnosis, and records in strategies for solving social problems, economic development, cooperation programs, as well as the development of social economy in the community or the poviát; real development of the social economy will take place where various partnerships will be established, where trust will grow as a foundation of mutual relations between citizens, institutions and entities in the local government community; the development of the social economy depends on the shaping of participatory, conscious policy of self-government community, combining solidarity and entrepreneurship, therefore it is important to ensure the increase of knowledge among employees and self-government authorities on the very idea of the social economy, its possibilities and threats, building partnerships and participation in politics as well as the use of social clauses in public procurement and the use of socially responsible public procurement in local politics.
3. greater emphasis in the support of social economy entities should be placed on the training of their members / employees for the management of the unit, what will ensure the ability to identify existing and possible crises, and as a result, eliminate them; In addition, there should be increased knowledge in the field of marketing and advertising, so that entities become noticeable on the open market.
4. indicate that there is a need for low-interest loans dedicated to social entities of a reintegration character (CIS / KIS, ZAZ, WTZ) allowing access to new sources of financing their activities, which will also allow for the development of these entities,
5. take into account the need to increase knowledge about the social economy in the region through, inter alia, social campaigns, media campaigns, trade fairs, social economy contests, as well as training and courses on the wide range of social economy
6. pay attention to the need for expanding the catalog of services offered by Social Economy Support Centers operating in the Podkarpackie Voivodeship, adapted to the constantly changing market conditions.

8. Executive summary

The main objective of the report is to analyze the support services of social economy entities and networking initiatives in the Podkarpackie Voivodship. The report was prepared on the basis of a review of available documents such as: strategies, reports, publications, statements, scientific articles, diagnoses as well as internet sources devoted to social economy in the region. Examples of good practices illustrating the socio-economic situation of the region and local development were described on the basis of information obtained from direct interviews with experts.

Desk research analysis and direct conversations with people involved in activities for the Social Economy (included in the report as examples of good practices) showed that the Podkarpackie Voivodship belongs to economically less developed regions, but is one of the most dynamically developing regions in Poland in terms of development of the sector social economy. Taking into account the difference in the development of particular areas of the

region, it has been divided into 4 subregions, which allows adapting departments targeted at the social economy to the specificity of the area.

Over the past several years, it has been possible to create infrastructure supporting the activities of social economy entities in the voivodship, as well as to enable the emergence of new ones. Within the social economy sector in the Podkarpackie region there are differences resulting from the nature of the activities of enterprises (co-operative, reintegrative, and civic). This affects the diversity of tools and the wide range of support for social enterprises that operates in the region. The social economy support system in the Podkarpackie region consists of: Social Economy Support Centers, Social Economy Clusters, Local Action Groups, as well as public administration, which have substantively prepared staff and well thought-out support services tailored to Entities of the Social Economy needs, including: support for setting up enterprises, financing, consulting, training, legal assistance, sharing rooms.

The importance of social economy was recognized by both state and regional authorities. Strengthening this sphere as one of the priorities of social policy, in which it becomes a significant instrument for counteracting professional and social exclusion. Issues of Social Economy have been included in the most important strategic documents of the Voivodship, both at regional and local level. For the time being, there are no laws in Poland that would regulate the activities of all social enterprises regardless of their legal form, although work is underway on a law that would fulfill the status of entities to a number of benefits and allowances to entities pursuing social goals through business activities.

A special role in the region was attributed to "networking". This is an example of an innovative method of exchanging experience and good practices, the flow of staff and the joint provision of services. In the National Program for the Development of Social Economy adopted in 2014, networking has found its own special place, and the main implementation of activities in the field of networking has been made the Regional Center for Social Assistance. An important part of the social enterprise network are the topics of product promotion and marketing initiatives, such as the sponsorship www.portalwybieraj.pl, reports promoting successful Social Economy Entities in the Podkarpackie Voivodship in local TV (TVP Rzeszow - "Social Podkarpackie"), annual Social Economy Trade Fair or Podkarpackie Forum of Social Economy. One cannot overlook the important role of the Podkarpacki Committee for the Development of Social Economy composed of representatives of various circles associated with the social economy that has a significant impact on shaping the policy of the social economy in the region.

The results of the diagnosis showed that despite the significant development of activities for support services and networking of social enterprises, they are not free of weaknesses and still need improvement. This results in the lack of durability in the functioning of Social Enterprises, difficulties in obtaining funds for further investments or low level of participation in networking. There is a need to expand the catalog of services offered by Social Economy Support Centers operating in the Podkarpackie Voivodeship and adapt them to the constantly changing market conditions as well as to differences that occur inside the sector. Increasing the role of scientific centers in the development of the social economy sector. It is necessary to support cooperation between Social Economy Entities and Local Government Units and the business environment. One should also take measures to increase knowledge about the social economy in the region through social campaigns, media campaigns.

The present state of development of the social economy in Podkarpackie makes it possible to look into the future with hope, because some of the strategic goals and actions (included in the strategies and programs mentioned in the analysis) are being implemented right now. Also the achievements of recent years raise optimism about the prospects of creating a modern, consistent system of solutions on which the social economy sector in the Podkarpackie region will be based in the future.

Sources:

1. Podkarpackie Development Program for Social Economy 2016-2020
2. Potential of the Podkarpacka social economy against the imperfection of the regional labor market - Sławomir Solecki.
3. Development potential of Podkarpackie voivodship - diagnosis and evaluation - Jerzy Bański, Konrad Czapiewski, Marcin Mazur
4. <http://monitoruj.podkarpackie.pl/gospodarka-regionu/> of 18.10.2017
5. Diagnosis of the socio-economic situation of Podkarpackie voivodship. An update of the Podkarpackie Region Development Strategy for the years 2007 - 2013. - Regional Territorial Observatory
6. Report on the state of development of the social economy in the Podkarpackie Voivodship in 2015 / Rzeszow 2017, Laboratory of research "SOMA" /